

AOSU

Solar-Powered Wireless Security Camera

SolarCam D1 Classic

Quick Start Guide



- ☎ **United States:** +1-866-905-9950 Mon-Fri 9AM-5PM(PST)
United Kingdom: +44-20-3885-0830 Mon-Fri 9AM-5PM(GMT)
Germany: +49-32-221094692 Mon-Fri 9AM-5PM(CET)
Japan: +81-50-5840-2601 Mon-Fri 9AM-5PM(JST)

✉ support@aosulife.com 🌐 www.aosulife.com 📺 [@aosulife](https://www.facebook.com/aosulife)

AOSU Care

Hi Customer

Thank you for choosing AOSU security products. We have always put our customers first and foremost.

There are 3 things you should know before using this product:

1. Micro SD Card

If you don't have a Micro SD Card available at home now and don't want to spend extra time choosing one, please contact us directly.

TIP: the Micro SD Card gotta be formatted after inserting it up.

2. Select 2.4G Wi-Fi

The product only supports 2.4G Wi-Fi, please select 2.4G Wi-Fi when setting up the app.

3. Select installation location.

Please use your mobile phone to test the coverage of the home Wi-Fi signal at the planned installation position before installation, so that the product can receive a better signal.

Get all the tutorial videos of using product including but no limit to set up the app, installation and format micro sd card, **visit:**

aosulife.com

Join "AOSU Care" today as three ways below to get all of your problems solved by one-on-one live chat and phone service tech support.



United States: +1-866-905-9950 Mon-Fri 9AM-5PM(PST)

United Kingdom: +44-20-3885-0830 Mon-Fri 9AM-5PM(GMT)

Germany: +49-32-221094692 Mon-Fri 9AM-5PM(CET)

Japan: +81-50-5840-2601 Mon-Fri 9AM-5PM (JST)



support@aosulife.com



www.aosulife.com



@aosulife

TABLE OF CONTENTS

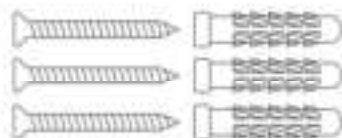
01	What's Included	P01
02	Product Overview	P02
03	Setting Up the System	P03
04	Mounting the Camera	P04-07
05	Notice	P08-P10
06	Customer Service	P11

What's Included

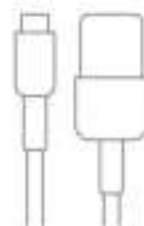
SolarCam D1 Classic



Camera



Screw Pack



USB-C Charging
Cable



Position Sticker

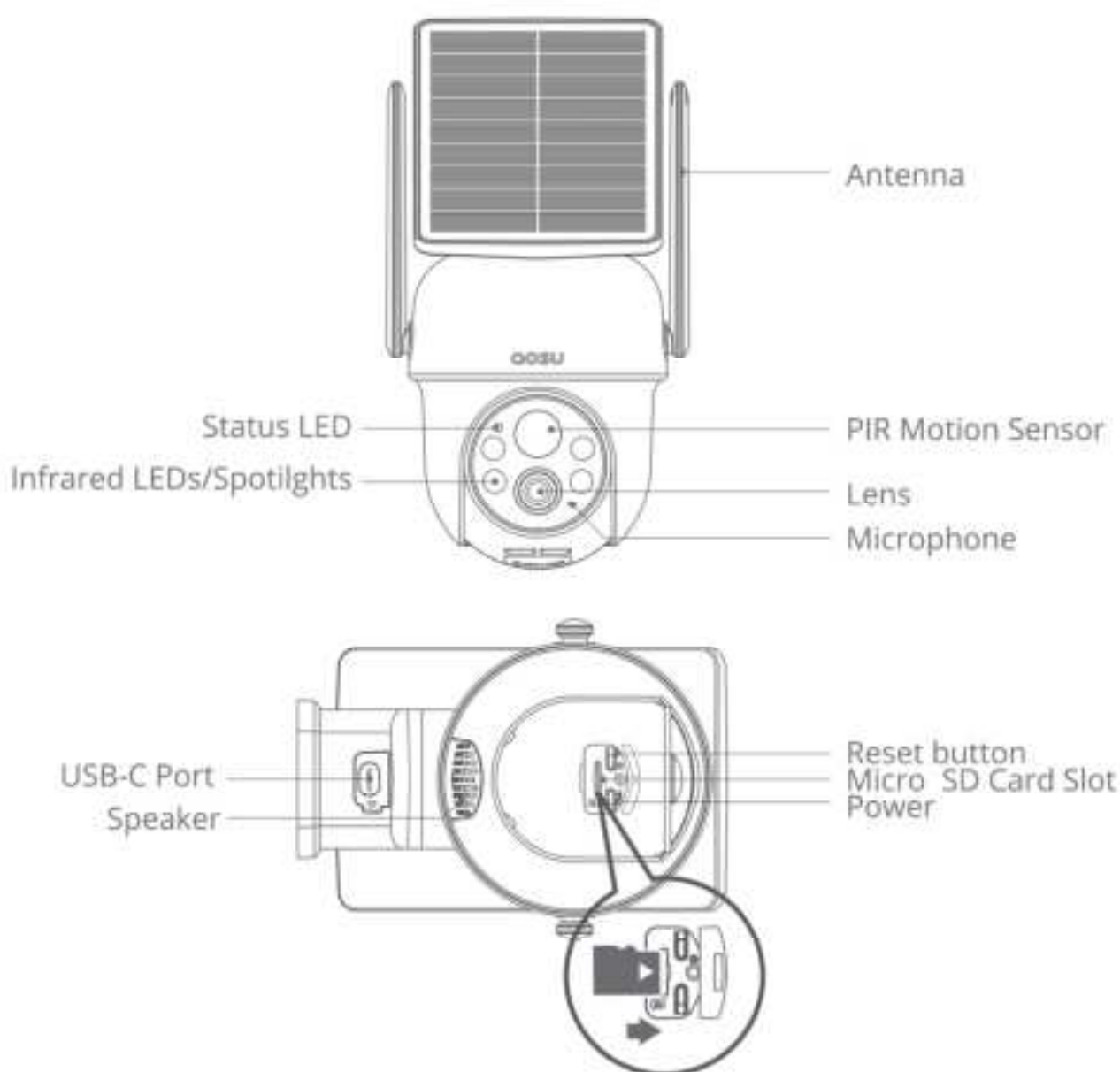


Security Sticker



Quick Start Guide

Product overview



CAUTION: Please insert the Micro SD Card according to the direction shown in the diagram. Micro SD Card might JAM if inserted incorrectly and device could be damaged.

Micro SD Card Port: Support Micro SD Card for local storage (Max 128GB).

Reset button: Press and hold the button for 3 seconds, and then the device will be ready to be connected.

Card capacity requirements: 8-128GB.

Read and write speed requirements: class10 level.

File format: FAT32.

Setting Up the System

Download the Aosu App from the App Store (iOS devices) or Google Play (Android devices).



Sign up for an Aosu App account, then follow the onscreen instructions to complete the setup.



Mounting the Camera

Find a Good Mounting Spot

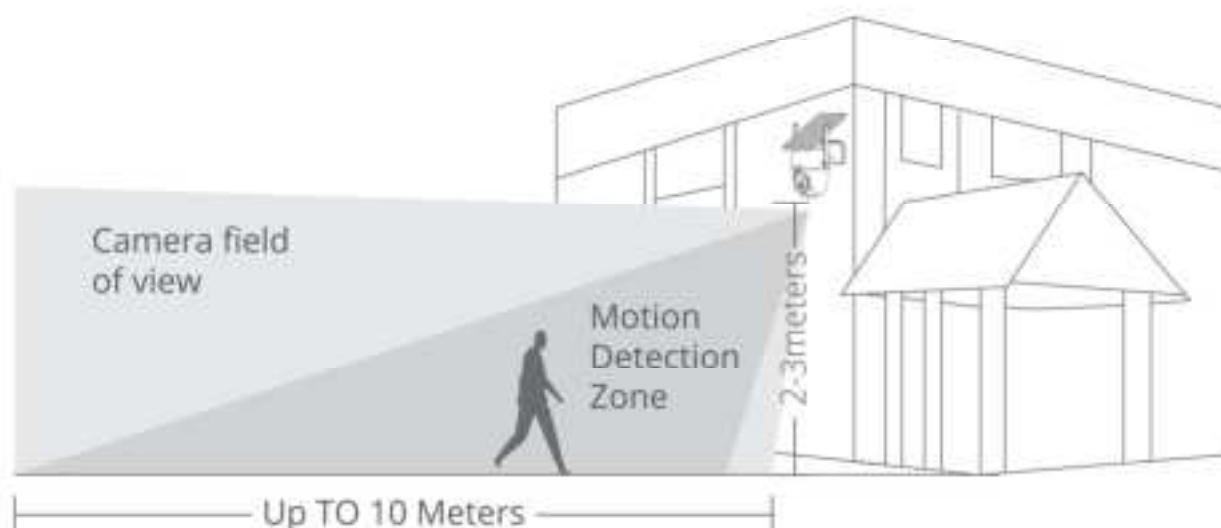
To find a spot to mount Camera, you need to test wireless signal strength.

- ① Open the **Aosu App**, go to Camera Settings > Quick Start.
- ② To test the wireless signal strength, take your camera and phone to the location where you want to mount the camera.
- ③ Move the camera as close to the Wi-Fi Router as possible to get a better signal.



Select Height

Hang Camera 2-3meters above the ground. This height maximizes the detection range of the motion sensor of Camera.



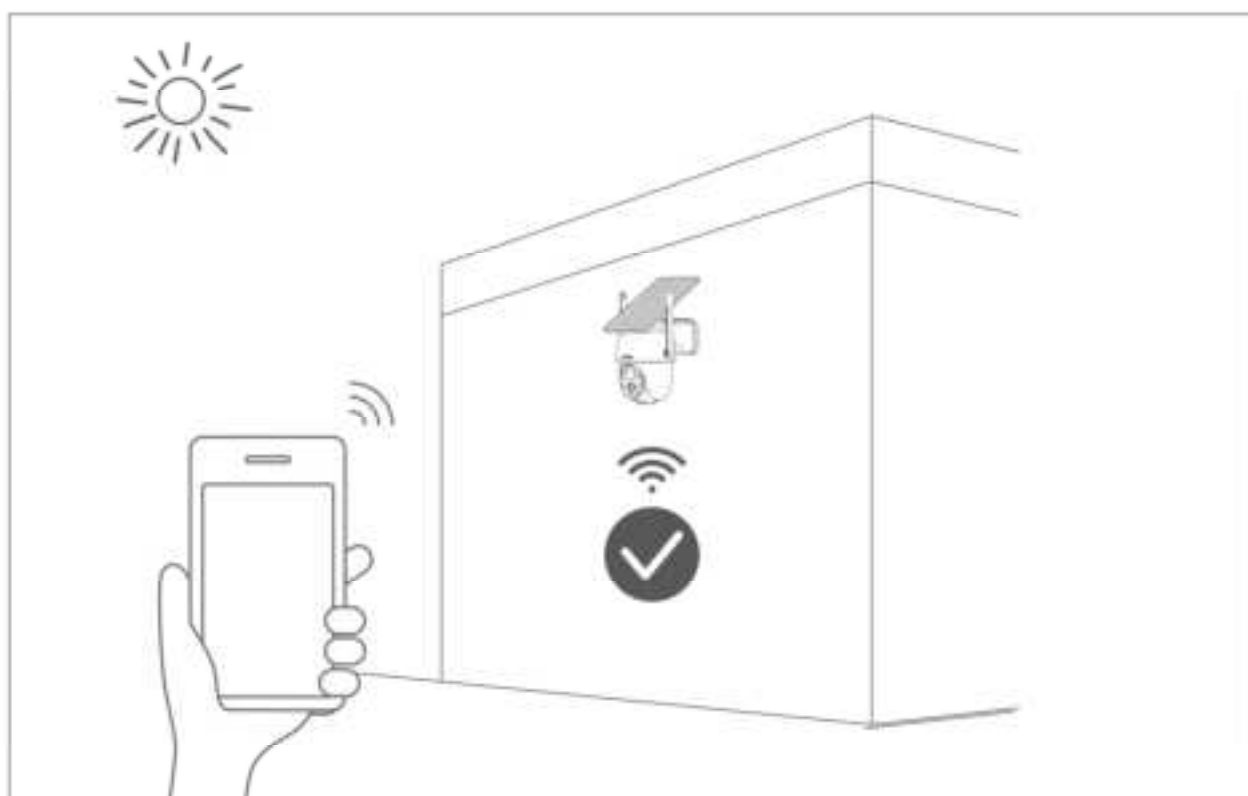
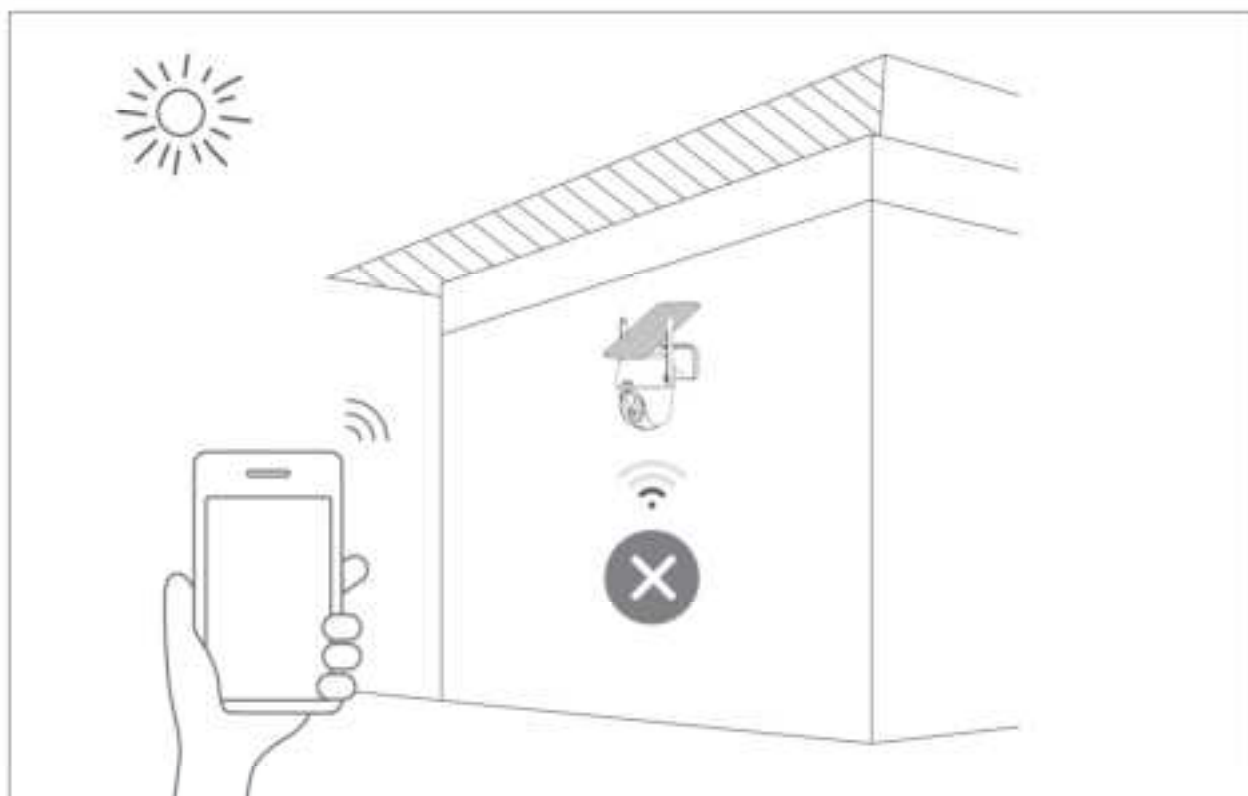
Select Location

1. When installing in the northern hemisphere, face the camera to the south, and when installing in the southern hemisphere, face the camera to the north.
2. Take care to install the camera so that the sun is not blocked by any items such as eaves, trees branches, etc.



Test the Wi-Fi signal at installation position

Use cell phone to test Wi-Fi signal quality at the installation position before installing camera, make sure the Wi-Fi router can provide good Wi-Fi signal.



Installation

1. Drilling according to position sticker, drill bit: 15/64"(6 mm).
2. Insert the plugs.
3. Tighten the screws.

What is required:

