

EXHIBIT 9

Internal Photographs

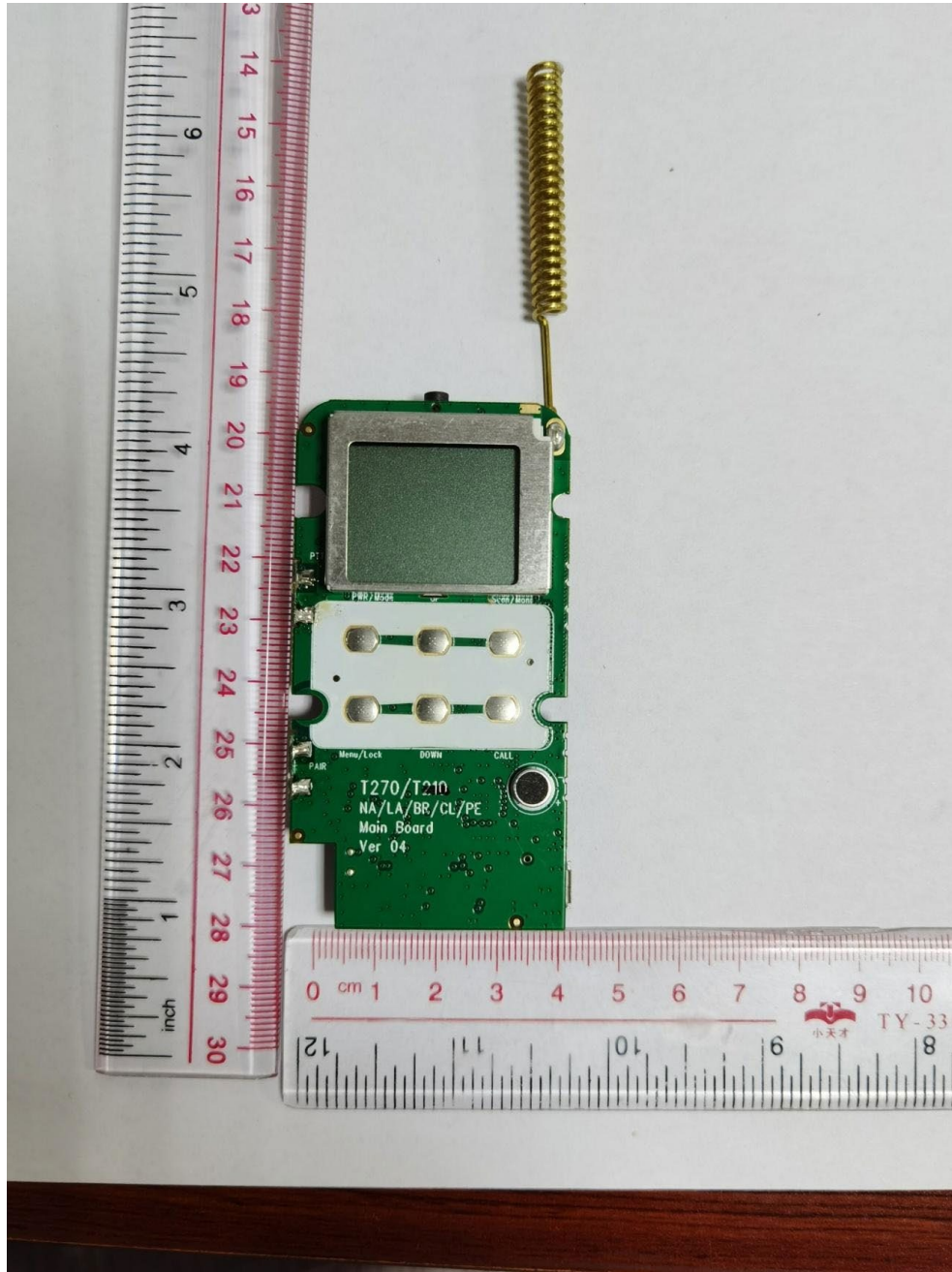
(Pursuant to FCC Part 2.1033(b)(7), 2.1033(c)(12) and RSP 100 Annex C)

The following photographs are attached.

Exhibit

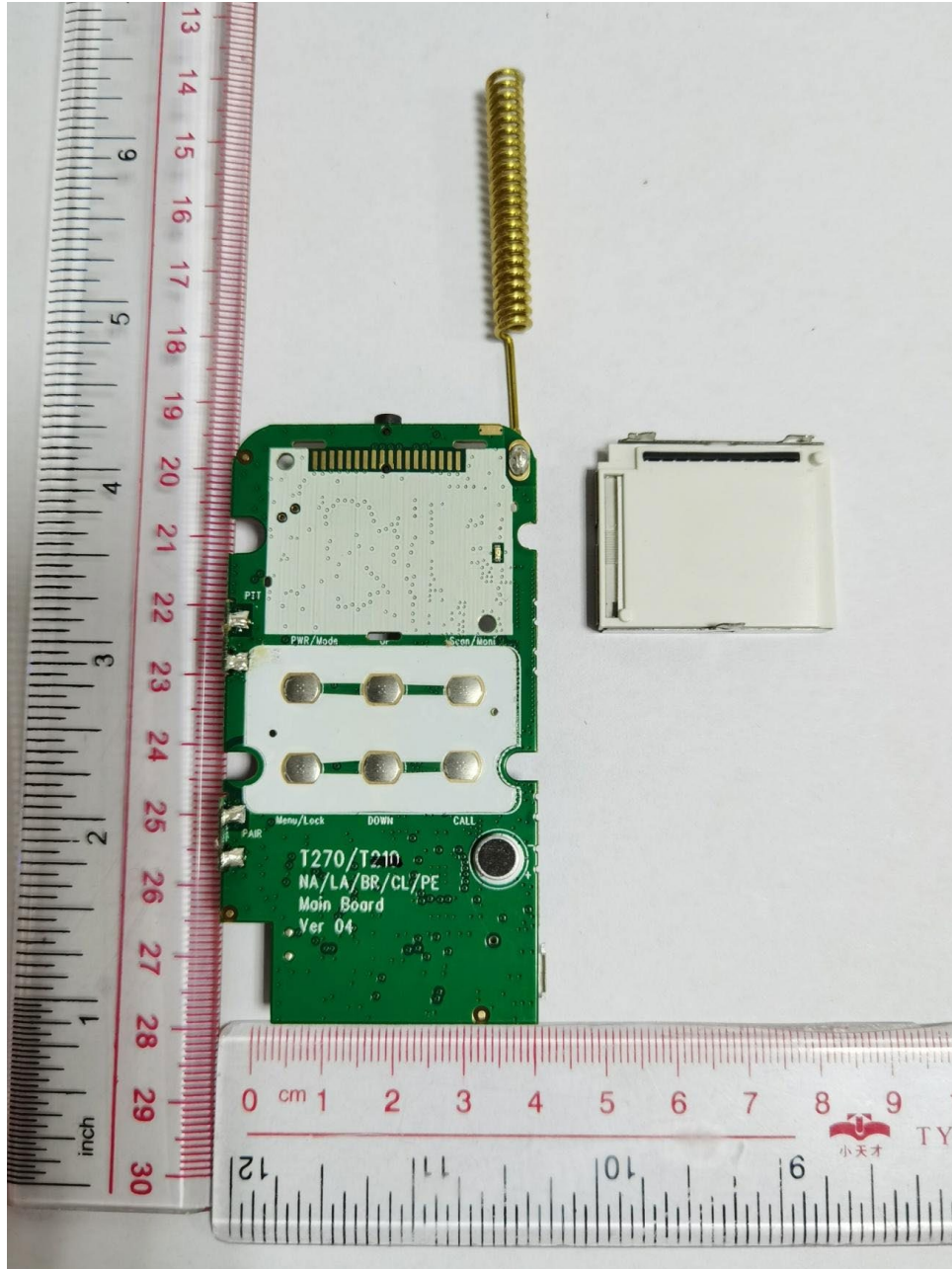
- | | |
|---|----|
| 1. RF board <u>with</u> Shields (Front View) | 9A |
| 2. RF board <u>without</u> Shields (Front View) | 9B |
| 3. RF board <u>with</u> Shields (Back View) | 9C |
| 4. RF board <u>without</u> Shields (Back View) | 9D |
| 5. RF Board with Chassis and Housing (Front View) | 9E |
| 6. Chassis and Housing (Back View) | 9F |
| 7. Exploded View of Radio | 9G |

EXHIBIT 9A: RF board with Shields (Front View)



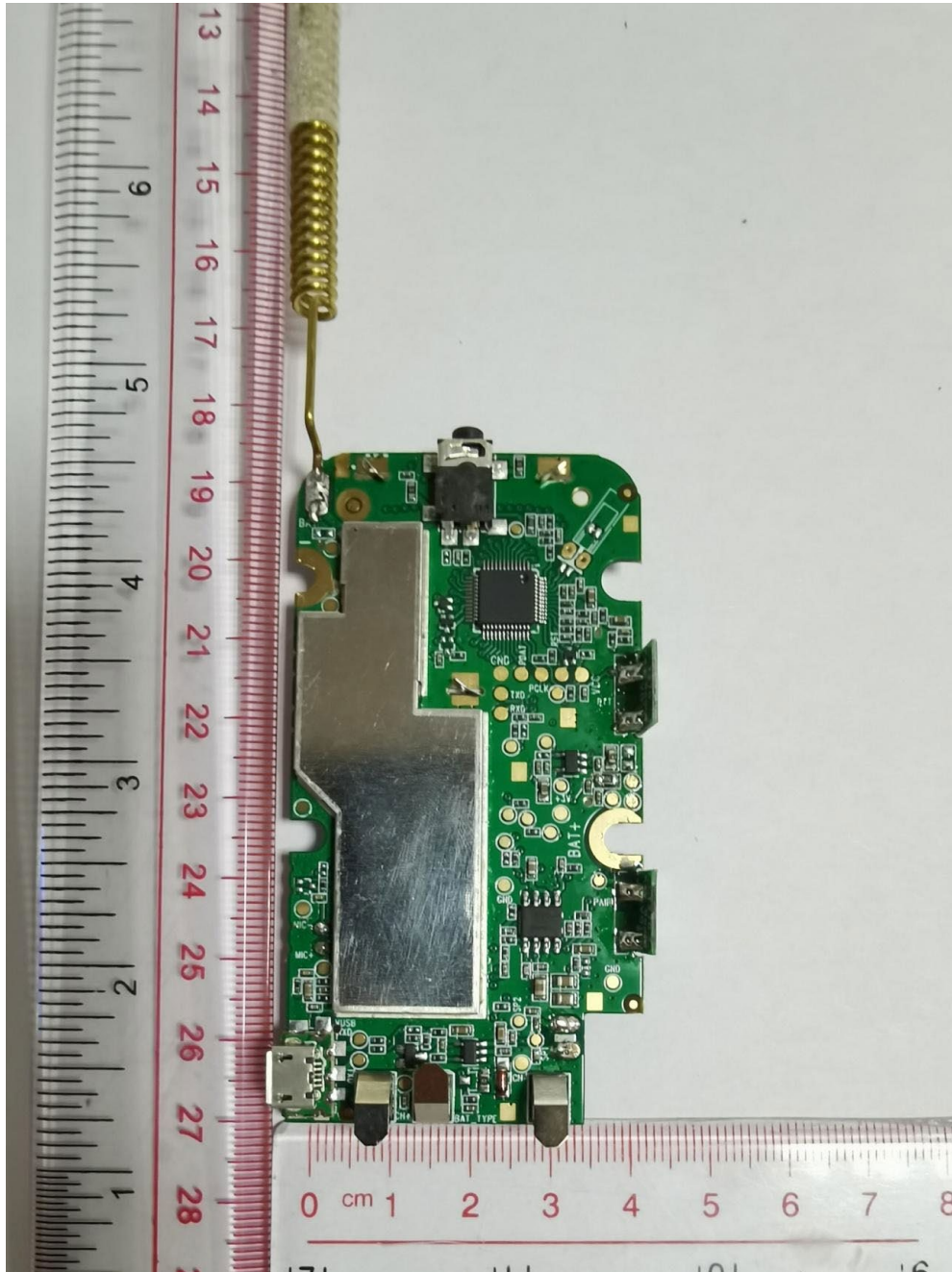
T270 Blue/ T270TP Blue/T271TP Yellow
(Note: All series using the same PCB)

EXHIBIT 9B: RF board without Shields (Front View)



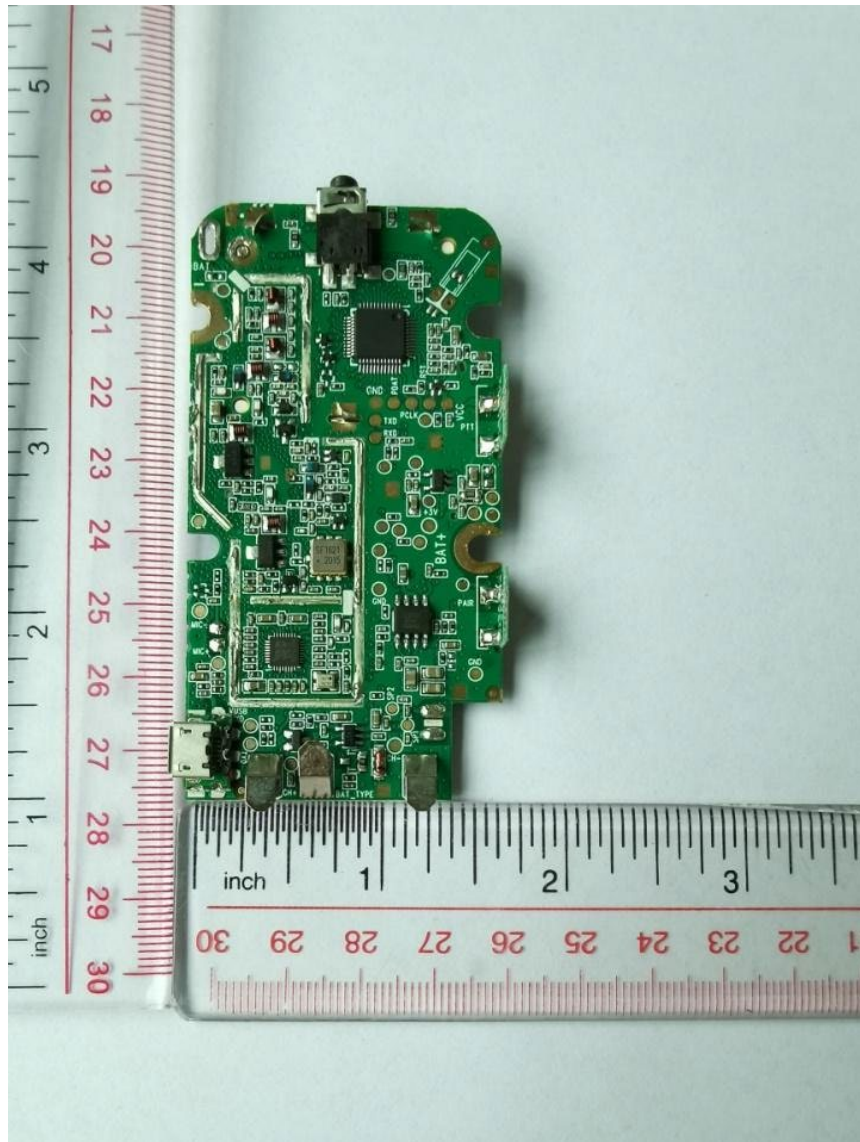
T270 Blue/ T270TP Blue/T271TP Yellow
(Note: All series using the same PCB)

EXHIBIT 9C: RF board with Shields (Back View)



T270 Blue/ T270TP Blue/T271TP Yellow
(Note: All series using the same PCB)

EXHIBIT 9D: RF board without Shields (Back View)



T270 Blue/ T270TP Blue/T271TP Yellow
(PCB with Weather IC)

EXHIBIT 9E: RF Board with Chassis and Housing (Front View)



T270/ T270TP (Blue)



T271TP

EXHIBIT 9F:Chassis and Housing (Back View)



T270 Blue/ T270TP Blue



T271TP Yellow

This exploded view diagram illustrates the assembly of a mobile phone. The components are arranged in a sequence from left to right, showing the internal structure and the external casing. Key parts include the back cover, battery, display, internal modules, and various screws and connectors. The diagram is color-coded to distinguish between different parts, such as blue for the back cover, green for the battery, and yellow for the internal modules.

*** END ***