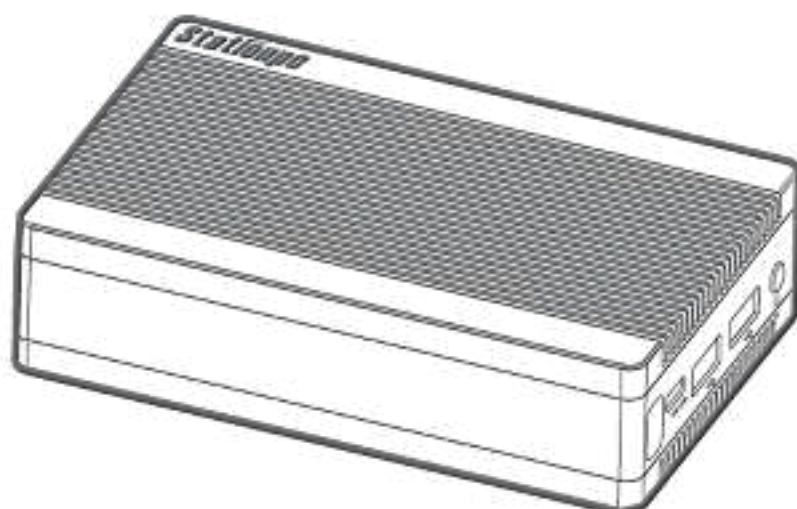


Stationpc

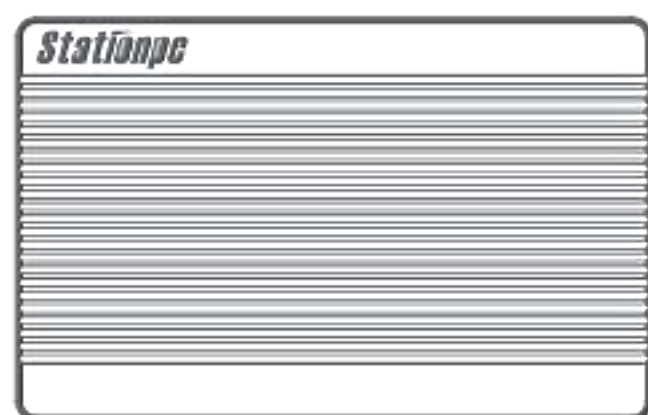
Station P1 Pro

Entertainment • Geek PC

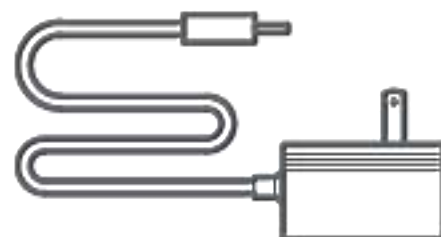


T-CHIP INTELLIGENCE TECHNOLOGY CO.,LTD.
www.stationpc.com

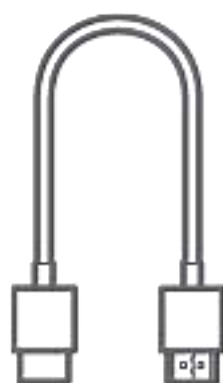
Packing List



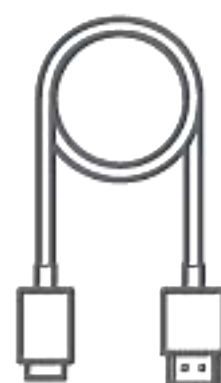
Station P1 Pro x1



12V-2A Power Adapterx1



HDMI2.0 Cablex1



Type-C Data Cablex1

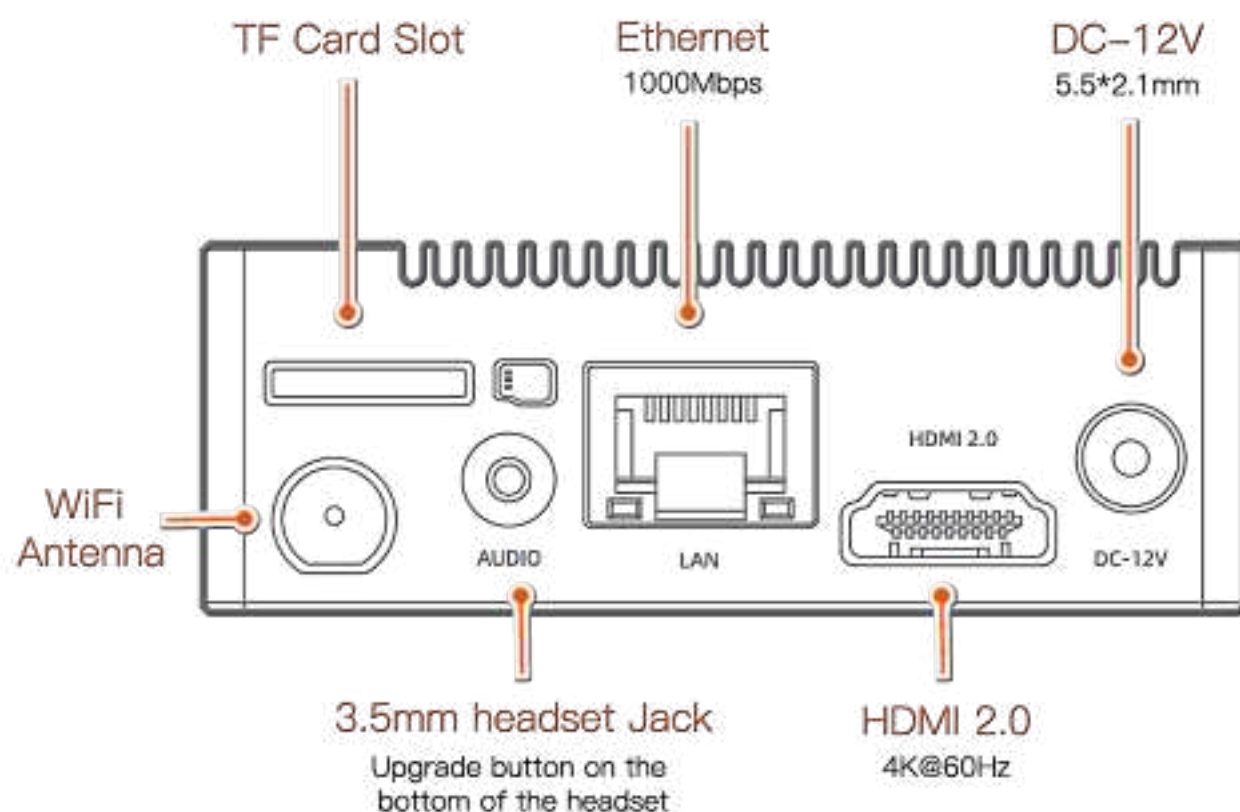
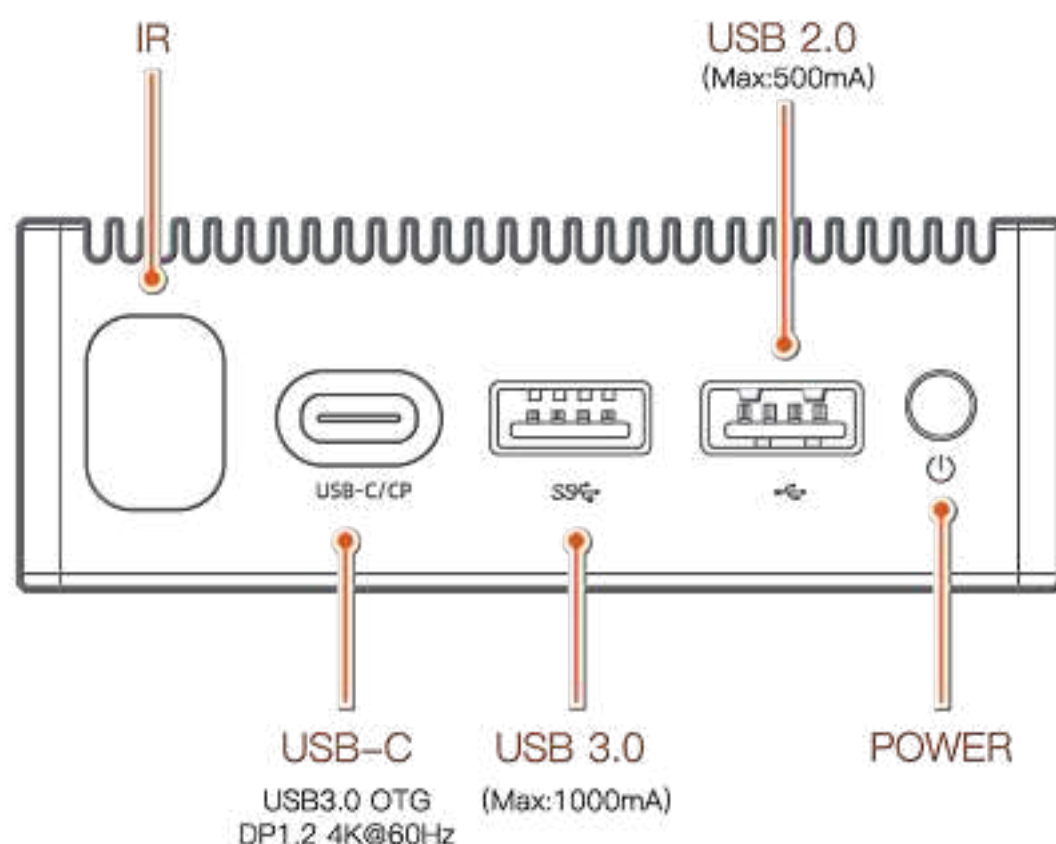


Remote Control x1



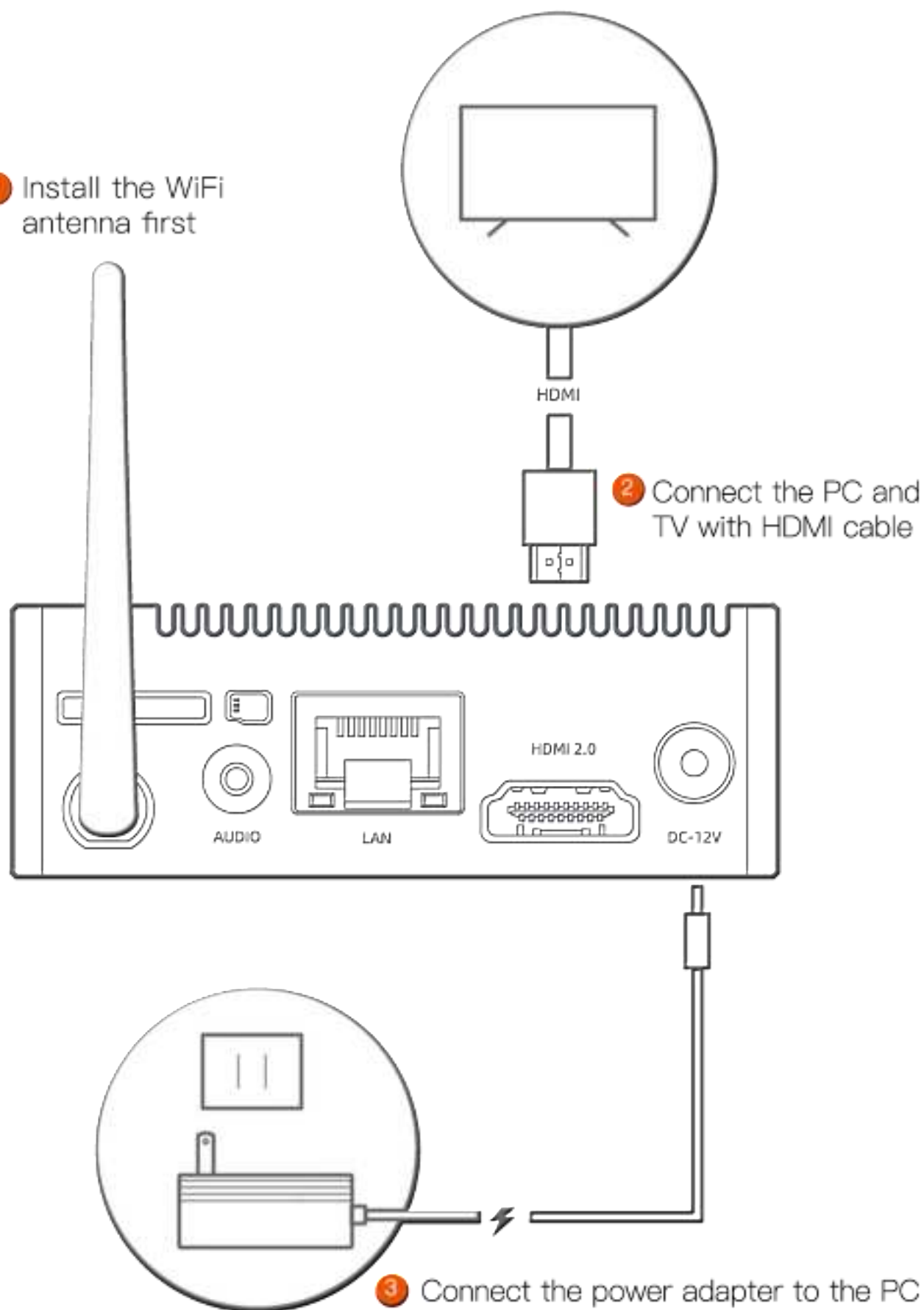
3db Antenna x1

Overview



Connection method

- 1 Install the WiFi antenna first



Specifications

Model	Station P1 Pro
CPU	RK3399 ARM Dual-core A72+Quad-core A53 Up to 1.8GHz
GPU	Mali-T860 MP4 GPUOpenGL ES1.1/2.0/3.0/3.1, OpenVG1.1, OpenCL, DX11OpenCL, DX11
Video	4K@60Hz H265/H264/VP9 video decodert 1080P (WMV, MPEG-1/2/4, VP8) Multi-format video decoder 1080P (H.264, VP8) encoder
RAM	2GB/4GB LPDDR4
Storage	16GB/32GB/64GB/128GB eMMC
Storage Expansion	1 x PCIe2.1(2Lane), support 2242 NVMe SSD Hard Disk 1 x TF Card Slot
Display	1 x HDMI2.0, 4K@60Hz 1 x DP1.2 (USB-C) , 4K@60Hz *Support dual display : 1xDP1.2 (2K) + 1xHDMI (4K)
Audio	1 x 3.5mm headset Jack, support MIC input
Ethernet	1000Mbps (RJ45) x1
Wireless	2.4GHz/5GHz Dual WiFi, 802.11a/b/g/n/ac, Bluetooth5.0
IR	Support infrared remote control
Key	1 x Power Key 1 x Recovery (Upgrade key, at the bottom of the headset)
USB	1 x USB2.0 (Max : 500mA) 1 x USB3.0 (Max : 1000mA) 1 x USB-C (USB3.0 OTG / DP1.2)
OS	Station OS
Power	DC 12V/2A
Size	124.4mm x 79mm x 31.6mm

FCC WARNING

This device complies with part 15 of the FCC Rules. Operation is subject to the following two conditions: (1) this device may not cause harmful interference, and (2) this device must accept any interference received, including interference that may cause undesired operation.

Any changes or modifications not expressly approved by the party responsible for compliance

could void the user's authority to operate the equipment.

NOTE: This equipment has been tested and found to comply with the limits for a Class B digital device, pursuant to Part 15 of the FCC Rules. These limits are designed to provide reasonable protection against harmful interference in a residential installation. This equipment generates, uses and can radiate radio frequency energy and, if not installed and used in accordance with the instructions, may cause harmful interference to radio communications. However, there is no guarantee that interference will not occur in a particular installation.

If this equipment does cause harmful interference to radio or television reception, which can be determined by turning the equipment off and on, the user is encouraged to try to correct the interference by one or more of the following measures:

- Reorient or relocate the receiving antenna.
- Increase the separation between the equipment and receiver.
- Connect the equipment into an outlet on a circuit different from that to which the receiver is connected.
- Consult the dealer or an experienced radio/TV technician for help.

To maintain compliance with FCC's RF Exposure guidelines, This equipment should be installed and operated with minimum distance between 20cm the radiator your body: Use only the supplied antenna.

Contact Us

E-mail : service@stationpc.com

Hotline: +86 185 7603 8366

Web: www.stationpc.com

Addr: 2101, Tower 1, Hongyu Building, #57 Zhongshan
4Rd, East District, Zhongshan, Guangdong, China.

