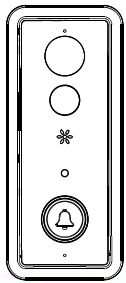


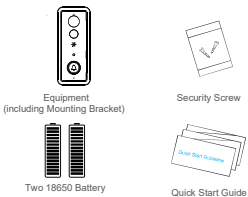
Low Consumption Smart Wireless Doorbell Quick Guide



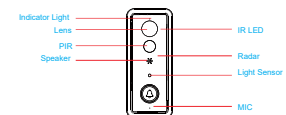
* Before using this product, please read the Quick Guide carefully and keep it for future reference
V1.0

Package List

Please check and make sure the camera (here in after referred to as "The Equipment") is in good condition and all below parts are included after opened the package.



Appearance Introduction

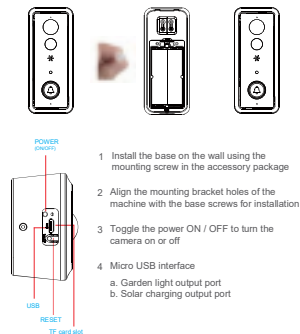


- IR LED** The infrared light will turn on automatically when the ambient light is insufficient.
- Light Sensor** It's used to collect ambient light values when the luminance is lower than 2Lux, infrared light will be enabled automatically.
- PIR** When human body moved in front of the equipment, the equipment will make notification to your mobile phone.
- Radar (optional)** When the human body moves in front of the device, the radar generates a trigger signal to the mobile phone.

- Lens** Video image capture
- Indicator Light** Blue light flashes ---- Pairing Status
Red light on ---- Failed WIFI Connection
Blue light on ---- Connected Successfully
Red & Blue light on together ---- Connecting Wi-Fi
- MIC** To gather the environmental sounds and realize voice-intercom.
- Speaker** System sound and voice intercom
- Mounting bracket holes** Use bracket mounting screws to mount the bracket to the wall

Installation Guide

Please take out the bracket from the equipment as shown in the figure



- 5 Press the reset button for 5 seconds, waiting for the indicator light turn to red slow flash (The equipment should be in working condition, long press, sleep state is invalid)
- 6 TF card slot, install TF card for video storage

Buzzer Matching Space (this device needs to be purchased separately)

Matching: Press and hold the buzzer volume key for 4 seconds, The LED Light will turn ON. Next, press the doorbell button for 5 seconds. When the buzzer LED blinks quickly, the matching is complete.

Reset: Press and hold the buzzer volume key for 10 seconds. The matching will reset.

Device Connection

Thanks for choosing our product. Please scan the following QR code to install the app on your phone, then set your device by following steps after it's done.

App Installation
Scan the QR codes below or Search "TuyaSmart" from App Store (for iOS devices)/Google Play Store (for Android smart phones) to download and install the App.



Set up your video doorbell in the TuyaSmart App

Step 1

Download TuyaSmart app Scan QR code below or search for "Tuya Smart" on Apple app store or Google Play.

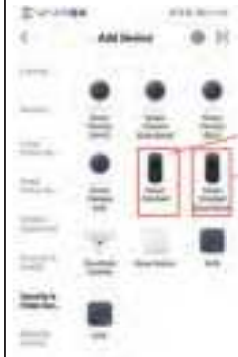


Step 2

Open the TuyaSmart app. Register your email or phone number and Log in to your account.

Step 3

To add your doorbell, select the "+" at top right of home page. Then select: Smart Doorbell



Step 4

Open the battery cover and remove the insulation tabs. When you hear the camera is now ready to begin pairing and the LED light is flashing blue quickly, tap Next step.



Step 5

Find the name of your Wi-Fi network. Enter your Wi-Fi password, then tap Confirm.



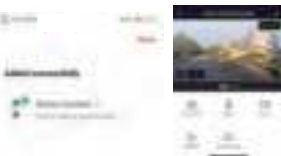
Step 6

Tap Continue, then use the doorbell to scan the QR code on your mobile phone. After you hear a prompt, tap I Heard a Prompt.



Step 7

Once the doorbell has connected to your Wi-Fi, tap Done. Setup is complete. Give it a try and go see the I Live preview.



NOTICE:

Be sure to turn on push notifications on your phone.
1. Navigate to Settings -> Notifications -> ON
2. A list of apps that support push notifications will appear.
3. Tap the TuyaSmart app and enable the notification.

Technical Specification

Resolution	1920*1080 (Matching)
Field of View	1.7mm@F2.4/166°
IR LED	6 850nm high power infrared lamps, 8~10 meters for night vision
WIFI	802.11a/b/g/n
Audio	Two-way speaking, with echo removal function
Recording	MicroSD card (Above C10 high speed brand card is needed)
Storage	Supports up to 128 GB MicroSD Card (Class 10, Min. 30MB/s is recommended)
Battery	18650 battery (Li-Ion, 2600mAh)
Push	Quick Push within 1 second
Prompting	Press/PIR/remote cell phone activation
Power	Standby current: 120 uA Working current: 170 mA

FAQ

- Q: How do I reset the doorbell?
A: Press and hold the RESET button for 5 seconds.
- Q: How do I share the video doorbell with my family?
A: 1. From the home page, tap the doorbell to live view.
2. Tap the "Settings" icon in the top right corner.
3. Select "Share Device".
4. Add sharing and enter the account name you want share to. Or you can follow the in-app instructions to do family settings.
- Q: How do I adjust PIR motion detection sensitivity?
A: 1. From the home page, tap the doorbell to live view.
2. Tap the settings icon in the top right corner.
3. Select PIR.
Options for PIR Motion Sensitivity:
High: Records and notifies you about every motion. Shortest battery life.
Medium: Records and notifies you about motion less often. Standard battery life.
Low: Records and notifies you about motion even less often.
Maximum battery life.
- Q: How many users can view the video at the same time?
A: Up to 8 users may view the video feed. Both iOS and Android are compatible.
- Q: Is 5GHz WiFi supported?
A: 5GHz WiFi is supported.
- Q: My signal is poor on my doorbell.
A: Your doorbell may be too far away from your wireless router or you may have some obstructions in between that reduce signal strength. You might try repositioning your router or getting a signal extender/repeater for your wireless router.
- Q: Is this device only battery powered?
A: Yes, it's only battery powered. No wires needed.
- Q: Can I use Tuya Smart Life app for the doorbell?
A: Yes, you can use both Tuya Smart Life and Denger Smart Home.

Introduction to Functions

- LONG BATTERY LIFE:** The capacity of the 18650 battery is 2600mAh, which equates to 6 months of battery life.
- HIGH DEFINITION:** Million High Definition Pixels within the Ultra-Thin 1.7MM Lens.
- ANYWHERE, ANYTIME:** Remote Cell phone activation (via the app) is supported.
- Wi-Fi connection supported
- Clear two-way speaking
- PIR supported. When someone is wandering outdoors, warning information is immediately sent to the connected cell phone via the app.
- Automatic switching between Day/Night mode with clear pictures to safeguard you and your family members.

*Tip: There will be no further notification of any change of the above functions. Please take the actual object as the standard. Thank!

NOTE
Please choose the correct 18650 battery to use with the smart doorbell!
Flat head Shart head



This device complies with part 15 of the FCC Rules. Operation is subject to the following two conditions: (1) This device may not cause harmful interference, and (2) this device must accept any interference received, including interference that may cause undesired operation.

Any Changes or modifications not expressly approved by the party responsible for compliance could void the user's authority to operate the equipment.

Note: This equipment has been tested and found to comply with the limits for a Class B digital device, pursuant to part 15 of the FCC Rules. These limits are designed to provide reasonable protection against harmful interference in a residential installation. This equipment generates uses and can radiate radio frequency energy and, if not installed and used in accordance with the instructions, may cause harmful interference to radio communications. However, there is no guarantee that interference will not occur in a particular installation. If this equipment does cause harmful interference to radio or television reception, which can be determined by turning the equipment off and on, the user is encouraged to try to correct the interference by one or more of the following measures:

- Reorient or relocate the receiving antenna.
- Increase the separation between the equipment and receiver.
- Connect the equipment into an outlet on a circuit different from that to which the receiver is connected.
- Consult the dealer or an experienced radio/TV technician for help.

This equipment complies with FCC radiation exposure limits set forth for an uncontrolled environment. This equipment should be installed and operated with minimum distance 20cm between the radiator & your body.