

# GIGABYTE™

## T E C H N O L O G Y



GN-BTP01

## Wireless Bluetooth USB Printer Adapter

User Guide

Rev.1.0 First Edition

This device complies with Part 15 of the FCC Rules. Operation is subject to the following two conditions: (1) this device may not cause harmful interference, and (2) this device must accept any interference received, including interference that may cause undesired operation.

#### FEDERAL COMMUNICATIONS COMMISSION INTERFERENCE STATEMENT

This equipment has been tested and found to comply with the limits for a Class B digital device, pursuant to Part 15 of the FCC Rules. These limits are designed to provide reasonable protection against harmful interference in a residential installation. This equipment generates, uses and can radiate radio frequency energy and, if not installed and used in accordance with the instructions, may cause harmful interference to radio communications. However, there is no guarantee that interference will not occur in a particular installation. If this equipment does cause harmful interference to radio or television reception, which can be determined by turning the equipment off and on, the user is encouraged to try to correct the interference by one or more of the following measures:

- Reorient or relocate the receiving antenna.
- Increase the separation between the equipment and receiver.
- Connect the equipment into an outlet on a circuit different from that to which the receiver is connected.
- Consult the dealer or an experienced radio/TV technician for help.

#### CAUTION:

Any changes or modifications not expressly approved by the party responsible for compliance could void the user's authority to operate the equipment.

#### **FCC RF Radiation Exposure Statement**

This equipment complies with FCC RF radiation exposure limits set forth for an uncontrolled environment. This equipment should be installed and operated with a minimum distance of 20cm between the radiator and your body.

The antenna(s) used for this transmitter must not be co-located or operating in conjunction with any other antenna or transmitter

# Contents

<b>Chapter1 Introduction .....</b>	<b>4</b>
<b>1.1 Package Contents .....</b>	<b>4</b>
<b>1.3 LED Status .....</b>	<b>5</b>
<b>1.4 Feature .....</b>	<b>5</b>
<b>1.5 Specification .....</b>	<b>5</b>
<b>1.2 System Requirements .....</b>	<b>5</b>
<b>Chapter2 Getting Started.....</b>	<b>6</b>
<b>2.1 Install the Bluetooth USB Printer Adapter ....</b>	<b>6</b>
<b>2.2 How to configure the printer .....</b>	<b>6</b>

# Chapter1 Introduction

The popularity Bluetooth technology has gained over the past couple of years is far greater than the welcome it received when Bluetooth was first discovered in 1994. One of the main factors going against Bluetooth technology was the cost of Bluetooth products. Even today, Bluetooth products cannot be considered that cheap. Nevertheless greater acceptance by manufactures of mobile devices, motherboards etc, has resulted in the expansion of the Bluetooth market.

## 1.1 Package Contents

Before the installation procedures, please ensure the components are not damaged during the shipping. The shipment of the GN-BTP01 includes:

- One Gigabyte GN-BTD01 Bluetooth USB Printer Adapter
- One User Guide
- One Power Adapter (5V, 2A)

Please contact your local distributor authorized reseller immediately for any missing or damaged components. If you require returning the damaged product, you must pack it in the original packing material or the warranty will be voided.

## 1.2 System Requirements

- Windows XP/2000/Me/98se with USB 1.1 Support, One Available USB Port, CD-ROM Drive

## 1.3 LED Status

Description	Status
Power On	When the Green LED light is on, the GN-BTP01 is receiving power.
Data Linking	The Blue LED light will flash irregularly.

## 1.4 Feature

- Remotely wake up Bluetooth Printer
- Highly compatible with versatile printers.
- Support client side Widcom Bluetooth stack software
- High performance radio transceiver
- Supporting HCRP & SPP profile
- Low power standby mode to enable very efficient Power Management
- Weight: 30g+-5g
- Dimensions: 80mm x 43mm x 16mm
- One-year manufacturer warranty

## 1.5 Specification

<b>Standard</b>	Fully Bluetooth V1.1 Bluetooth operation
<b>Interface</b>	USB male B type
<b>Frequency range</b>	2.4~2.483 GHz
<b>Channel number</b>	79
<b>Modulation</b>	FHSS( Frequence hopping spreading spectrum )
<b>Antenna</b>	External antenna supporting diversity
<b>Coverage</b>	100 meters
<b>RX Sensitivity @ BER 0.1%</b>	Typical. -80 dbm, Min -70 dbm ,max -85 dbm
<b>LED indicators</b>	Power on, Link Status

## Chapter2 Getting Started

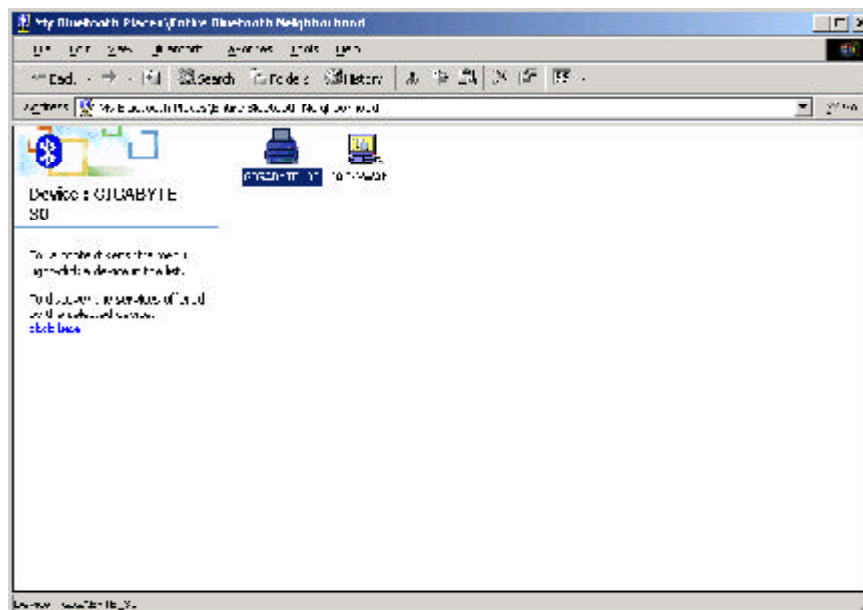
### 2.1 Install the Bluetooth USB Printer Adapter

**Notice:** If you have not already installed your printer, please follow the instructions supplied by your printer manufacturer and install your printer first.

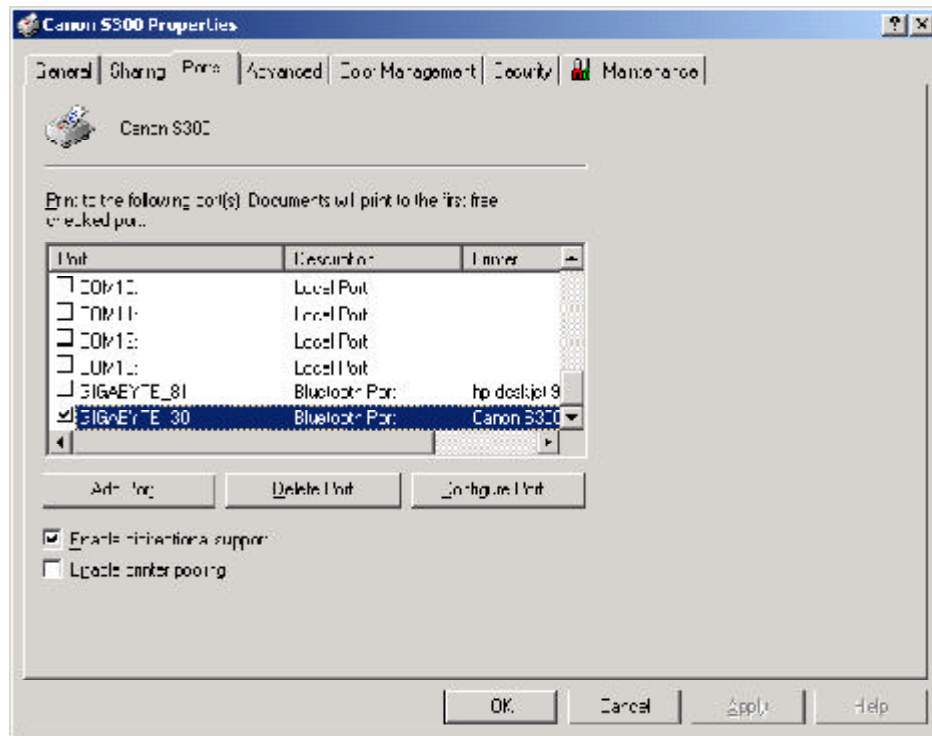
- Step1. Power on the Printer.
- Step2. Insert the Bluetooth USB Printer Adapter into the USB port of the printer.
- Step3. Plug the end of the power cord firmly into the receptacle on the Bluetooth USB Printer Adapter. And then plug the other end of the power cord into an electric service outlet.
- Step4. The connection between Bluetooth USB Printer Adapter and printer is successfully if the LEDs of the Bluetooth USB Printer Adapter is blinking.

### 2.2 How to configure the printer

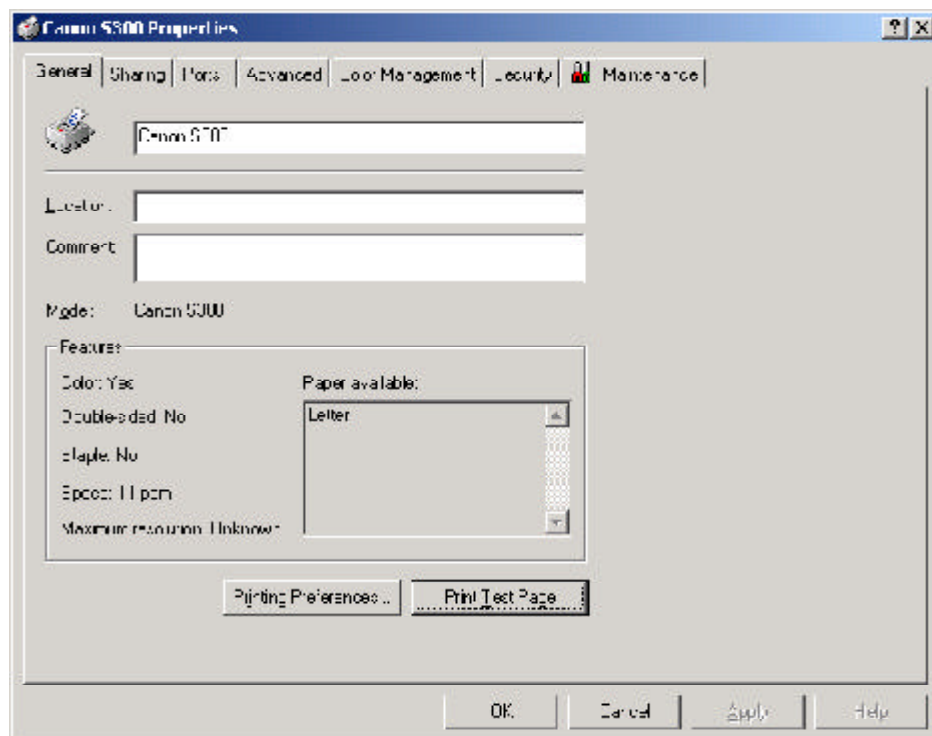
- Step1. Start the “**My Bluetooth Places**” on your computer.
- Step2. Double click “**Entire Bluetooth Neighborhood**”.
- Step3. It will automatically try to search for other bluetooth device. if not, click “**Search for devices**” or “**refresh**” the list of devices.
- Step4. Wait until the search has finished.
- Step5. Double click the printer icon 'Gigabyte\_xx'.



- Step6. The configuration screen of the printer will appear. Select the Bluetooth Port of the printer which you have been installed on the Ports page. And then go to the General page.



- Step7. Click the **"Print Test Page"** button on the General page. If the test page can print out successfully, the setting is completed. And now, you can use the printer through Bluetooth USB Printer Adapter to print from any application as you normally would.



**Notice:** *Once you had finished the Bluetooth printer installation setting, you can print any document through the Bluetooth device even the printer does not appear in the “**Entire Bluetooth Neighborhood**”.*



## **Limited Warranty**

### **1-Year Warranty**

Gigabyte warrants to the original consumer/purchaser that the product free from defects in material and workmanship for no limited time from the original manufactory shipment date. This warranty does not cover the product if it is damaged in the process of being installed or improperly used.

Gigabyte may replace or repair the product with either new or reconditioned parts. Repaired or replaced products will be returned to you at the same revision level as received or higher at Gigabyte's option. Gigabyte reverses the right to replace discounted products with an equivalent generation product.

### **KEEP THIS STUB FOR YOUR PURCHASING RECORD**

<b>Customer:</b>	
<b>Phone No:</b>	
<b>Address:</b>	
<b>Email:</b>	
<b>Model:</b>	
<b>Serial:</b>	
<b>Date of Purchase:</b>	
<b>Place of Purchase:</b>	
<b>From Whom:</b>	
<b>Distributor:</b>	

## **Customer Satisfaction**

### **GIGA-BYTE TECHNOLOGY CO., LTD.**

No.6, Bau Chiang Road, Hsin-Tien, Taipei Hsien, Taiwan, R.O.C.

Tel: 886-2-89124888

Fax:886-2-89124007

<http://www.gigabyte.com.tw>

### **Technical Support**

E-mail: [networksupport@gigabyte.com.tw](mailto:networksupport@gigabyte.com.tw)