



ThinkPad[®] R32

Service and Troubleshooting Guide



ThinkPad[®] R32

Service and Troubleshooting Guide

Note

Before using this information and the product it supports, be sure to read the general information under Appendix A, "Important safety instructions" on page 45, Appendix D, "Warranty Information" on page 57, Appendix E, "Notices" on page 71, and Appendix C, "Wireless Regulatory Information" on page 51.



DANGER

- To avoid electric shock hazard, connect and disconnect cables appropriately when installing, moving or opening the covers of this product or attached devices. Use the power cord with a properly grounded outlet.
- Do not leave the base of your computer in contact with your lap or any part of your body for an extended period when the computer is functioning or when the battery is charging. Your computer dissipates some heat during normal operation. This heat is a function of the level of system activity and battery charge level. Extended contact with your body, even through clothing, could cause discomfort or, eventually, a skin burn.
- To reduce the risk of electric shock, do not use your computer in or near water.
- To avoid electric shock, do not use your computer with the telephone cable connection during an electrical storm. Do not connect the cable to or disconnect it from the telephone outlet on the wall during an electrical storm.
- Store packing materials safely out of the reach of children to prevent the risk of suffocation from plastic bags.
- The battery pack contains a small amount of harmful substances. There is danger of an explosion if the battery pack is incorrectly replaced, exposed to fire or water, short-circuited or disassembled. Keep the battery pack away from children and do not put it in trash that is disposed of in landfills.
- To reduce the risk of fire, use only No. 26 AWG or thicker telephone cable.
- The fluorescent lamp in the LCD contains mercury. Do not put it in trash that is disposed of in landfills. Rough handling or dropping the computer can cause the LCD to break and the internal fluid to get into your eyes or on your hands. Immediately wash the affected areas with water. If symptoms persist, seek medical care.
- Do not disassemble the optical storage drive unit, as this might result in hazardous radiation exposure.
- Avoid direct eye exposure with the laser beam contained in some drives.

First Edition (January 2002)

The following paragraph does not apply to the United Kingdom or any country where such provisions are inconsistent with local law:

INTERNATIONAL BUSINESS MACHINES CORPORATION PROVIDES THIS PUBLICATION "AS IS" WITHOUT WARRANTY OF ANY KIND, EITHER EXPRESS OR IMPLIED, INCLUDING, BUT NOT LIMITED TO, THE IMPLIED WARRANTIES OF NON-INFRINGEMENT, MERCHANTABILITY OR FITNESS FOR A PARTICULAR PURPOSE. Some states do not allow disclaimer of express or implied warranties in certain transactions, therefore, this statement may not apply to you.

This information could include technical inaccuracies or typographical errors. Changes are periodically made to the information herein; these changes will be incorporated in new editions of the publication. IBM may make improvements and/or changes in the product(s) and/or the program(s) described in this publication at any time without notice.

IBM may use or distribute any of the information you supply in any way it believes appropriate without incurring any obligation to you.

© Copyright International Business Machines Corporation 2001. All rights reserved.

US Government Users Restricted Rights – Use, duplication or disclosure restricted by GSA ADP Schedule Contract with IBM Corp.

Important Notice for Users

The FCC RF Safety Requirement

- When you use a Bluetooth™ option or wireless PCMCIA card in your ThinkPad R32 computer, please make sure of the following:
 1. Visit the IBM® site at www.ibm.com/pc/qtechinfo/MIGR-39377.html and confirm the updated list of RF option devices that have been approved to cooperate with the integrated wireless feature.
 2. When you use any other RF option device that is not listed on the IBM site, all other wireless features including the integrated transmitter in your ThinkPad computer are required to be turned off.
 3. Users are requested to follow the RF Safety instructions on wireless option devices that are included in the RF option device's user's manual.

See Appendix C, "Wireless Regulatory Information" on page 51 for more details.

Finding information with Access ThinkPad

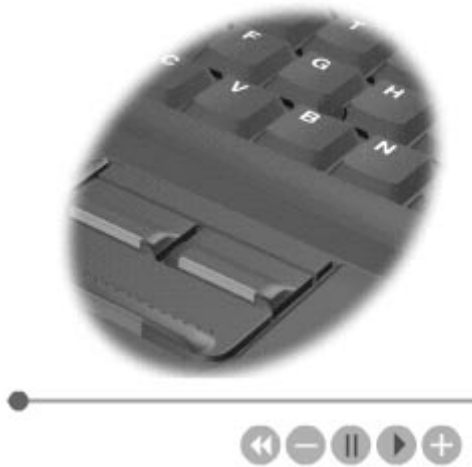
Find answers to questions about your computer and view IBM Web sites by pressing the ThinkPad button to open Access ThinkPad, your on-board computer help center.



- ① Learn about the many features of your ThinkPad computer. ThinkPad Features provides a visual display of your computer and components.
- ② Once you are familiar with the hardware features of your system use the Tools and Tips category to get the most out of those features like Wireless Networking, Maximizing your battery life, etc... Click Access Help to open a comprehensive help system offering information such as how to change or upgrade the memory in your computer.
- ③ Visit these IBM Web sites to join an interactive community of ThinkPad users, download new backgrounds, purchase accessories, or get online support.
- ④ Keyword Search provides a quick way to search information in Access Help.

- ⑤ You can view information about your system such as model number in System Details and change the look of your application through Personalize.

Some of the topics in your help system contain brief video clips that show you how to perform certain tasks, such as installing additional memory, replacing your battery, or inserting a PC Card. Use the controls shown to play, pause, and rewind the video clip.



Contents

Important Notice for Users.	iii
The FCC RF Safety Requirement	iii

Finding information with Access ThinkPad	v
---	----------

Chapter 1. Overview of your new ThinkPad computer	1
Your ThinkPad at a glance	2
Features.	3
Specifications	5
Caring for your ThinkPad computer	6

Chapter 2. Solving computer problems	9
Diagnosing problems	10
Troubleshooting.	11
Error codes or messages	11
Errors without codes or messages.	15
A password problem	17
A power switch problem.	17
Keyboard problems	17
TrackPoint problems	19
Infrared port problems	20
Standby or hibernation problems	21
Computer screen problems	23
An external monitor problem	25
A television problem	25
Battery problems	25
Hard disk drive problems	26
CD-ROM, DVD-ROM, CD-RW,	
CD-RW/DVD drive problems	26
Software problems	28
Other problems	28
Starting BIOS Setup Utility	30
Recover pre-installed software	31
Installing a new operating system and device drivers.	32
Backing up your system	33
Backing up your registry.	33
Backing up data.	34
Replacing the hard disk drive	35
Replacing the battery	37

Chapter 3. Getting help and service from IBM.	39
--	-----------

Getting help and service	40
Getting help on the Web	40
Getting help by fax	41
Calling IBM	41
Getting help around the world.	43

Appendix A. Important safety instructions	45
Modem safety information	47
Laser compliance statement.	48

Appendix B. Wireless Related Information	49
Wireless Interoperability	49
Usage environment and your Health.	49

Appendix C. Wireless Regulatory Information	51
USA - Federal Communications Commission (FCC)	51
The FCC RF Safety Requirement	51
Interference Statement	52
Canada – Industry Canada (IC)	52
Europe – CE Declaration of Conformity.	52
Notice for Users in Singapore	56

Appendix D. Warranty Information	57
Warranty Period	57
Warranty service and support	57
Before you call for service	58
Calling for service	58
IBM Statement of Limited Warranty	
Z125-4753-06 8/2000	59
Part 1 - General Terms	59
Part 2 - Country-unique Terms.	62

Appendix E. Notices.	71
Processing date data	71
References to the Web site addresses.	72
Electronic emission notices	72
<i>Federal Communications Commission (FCC) Statement</i>	72
<i>Industry Canada Class B Emission Compliance Statement</i>	73
<i>Avis de conformité à la réglementation d'Industrie Canada.</i>	73

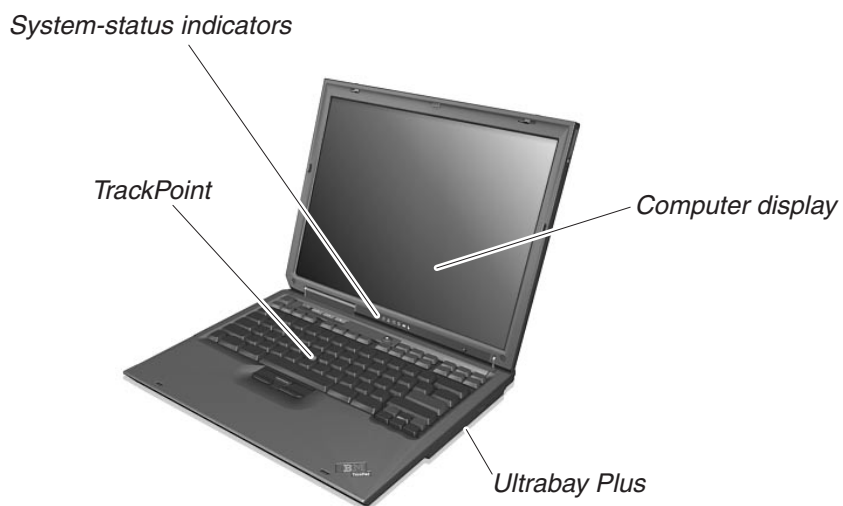
<i>European Community Directive</i>	
<i>Conformance Statement</i>	73
Telecommunication notices	73
<i>Federal Communications Commission</i>	
<i>(FCC) and Telephone Company</i>	
<i>Requirements (Part 68 of the FCC Rules)</i>	73
Fax Branding	74
Industry Canada requirements	75
<i>Notice</i>	75
<i>Caution</i>	75
<i>Avis.</i>	75
<i>Avertissement</i>	76
Notice for Australia	76
Notice for New Zealand	77
Notice for European Union countries.	79
Product notice requirements	80
Trademarks	80
Index	81

Chapter 1. Overview of your new ThinkPad computer

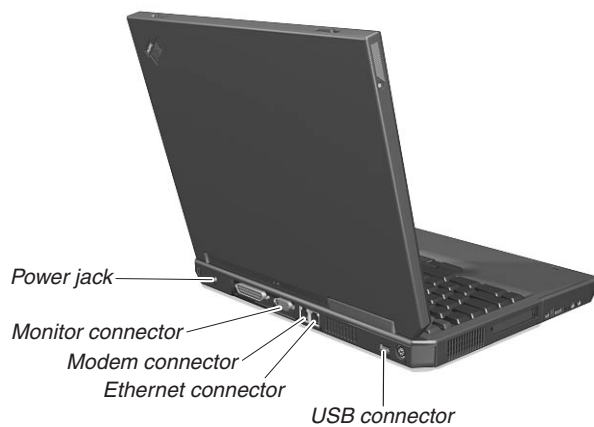
Your ThinkPad at a glance	2	Specifications	5
Features.	3	Caring for your ThinkPad computer	6

Your ThinkPad at a glance

Front view



Rear view



Features

Processor

- Intel® Mobile Pentium® 4 Processor – M featuring Intel® Enhanced SpeedStep™ technology

Memory

- Two slots (for base memory and memory upgrades)
- Base: 128 MB or 256 MB
- Maximum: 1 GB

Storage device

- 2.5-inch hard disk drive: Up to 40 GB, depending on the model

Display

The color display uses TFT technology:

- Size: 13.3 or 14.1 inch, depending on the model
- Resolution:
 - LCD: 1024-by-768
 - External monitor: Up to 1600-by-1200
- Brightness control (Fn key function)

Keyboard

- 87-key, 88-key, or 92-key
- TrackPoint®
- Fn key function
- ThinkPad button
- Volume control buttons
- ThinkLight™

External diskette drive — available on selected models

To get the best performance from your diskette drives, use high-quality diskettes (such as IBM diskettes) that meet or exceed the following standards:

- 1-MB, 3.5-inch, unformatted diskette:
 - ANSI (American National Standards Institute) X3.137
 - ISO (International Standards Organization) 8860
 - ECMA (European Computer Manufacturers Association) 100
- 2-MB, 3.5-inch, unformatted diskette:
 - ANSI X3.171
 - ISO 9529
 - ECMA 125

External interface

- Parallel connector (IEEE 1284A)
- External-monitor connector
- PC Card slot (one Type I, Type II, or Type III PC Card)
- Headphone jack
- Microphone jack
- Video-out connector (S-video)
- Universal Serial Bus (USB) connectors (two)
- Infrared port
- RJ11 telephone connector
- RJ45 Ethernet connector
- Integrated wireless LAN (IEEE 802.11b) feature (on some models)
- IEEE 1394 connector (on some models)
- Ultrabay™ Plus
- Expansion connector

Specifications

Size

- Width: 313 mm (12.3 in.)
- Depth: 254 mm (10 in.)
- Height: 38 mm (1.5 in.)

Environment

- Maximum altitude without pressurization: 3048 m (10,000 ft)
- Temperature
 - At altitudes up to 2438 m (8000 ft)
 - Operating with no diskette: 5° to 35°C (41° to 95°F)
 - Operating with a diskette: 10° to 35°C (50° to 95°F)
 - Not operating: 5° to 43°C (41° to 110°F)
 - At altitudes above 2438 m (8000 ft)
 - Maximum operating temperature, 31.3°C (88° F)

Note: When you charge the battery pack, its temperature must be at least 10°C (50°F).

- Relative humidity:
 - Operating with no diskette in the drive: 8% to 95%
 - Operating with a diskette in the drive: 8% to 80%

Heat output

- Approximately 65 Kcal per hour

Electrical (ac adapter)

- 72 W
- Sin-wave input at 50 to 60 Hz
- Input rating of the ac adapter: 100-240 V ac, 50 to 60 Hz

Battery

- Lithium-Ion
- Nominal voltage: 10.8 V dc
- Capacity: 4.0 AH

Caring for your ThinkPad computer

Though your computer is designed to function reliably in normal work environments, you need to use common sense when handling it. By following these important tips, you will get the most use and enjoyment out of your computer.

Important tips:

Be careful about where and how you work

- Do not leave the base of your computer in contact with your lap or any part of your body for an extended period when the computer is functioning or when the battery is charging. Your computer dissipates some heat during normal operation. This heat is a function of the level of system activity and battery charge level. Extended contact with your body, even through clothing, could cause discomfort or, eventually, a skin burn.
- Place liquids away from your computer to avoid spills, and keep your computer away from water (to avoid the danger of electrical shock).
- Store packing materials safely out of the reach of children to prevent the risk of suffocation from plastic bags.
- Keep your computer away from magnets, activated cellular phones, electrical appliances, or speakers (within 13cm/5 in).
- Avoid subjecting your computer to extreme temperatures (below 5°C/41°F or above 35°C/95°F).

Be gentle with your computer

- Avoid placing any objects (including paper) between the display and the keyboard or under the keyboard.
- Do not drop, bump, scratch, twist, hit, vibrate, push or place heavy objects on your computer, display, or external devices.
- Your computer display is designed to be opened and used at about 90 degrees. Do not open the display beyond 180 degrees, as this might damage the computer hinge.

Carry your computer properly

- Before moving your computer, be sure to remove any media, turn off attached devices, and disconnect cords and cables.
- Be sure your computer is in standby or hibernation mode, or turned off, before moving it. This will prevent damage to the hard disk drive and data loss.
- When picking up your open computer, hold it by the bottom. Do not pick up or hold your computer by the display.

- Use a quality carrying case that provides adequate cushion and protection. Do not pack your computer in a tightly packed suitcase or bag.

Handle storage media and drives properly

- If your computer comes with a diskette drive, avoid inserting diskettes at an angle and attaching multiple or loose diskette labels, as these can lodge in the drive.
- Do not touch the surface of a CD or DVD, or the lens on the CD or DVD tray.
- Wait until you hear the CD or DVD click into the center pivot of the CD or DVD drive before closing the CD or DVD tray.
- If your computer comes with a CD-RW or CD-RW/DVD drive, make sure your computer is protected from vibration when writing CDs. Vibration may result in errors or damaged CDs. Even typing on the computer will cause vibration.
- Do not get fingerprints, dust, or smudges on the recording/reading side of the CD-R or CD-RW disc. Do not use it for recording even if you cleaned it with disc cleaning liquid and cloth. The disc can be used for reading if you clean it.
- When installing your hard disk, CD or DVD drive, or installing an external diskette drive, follow the instructions shipped with your hardware, and apply pressure only where needed on the device. See Access ThinkPad, your on-board help system, for information on replacing your hard disk drive (open Access ThinkPad by pressing the ThinkPad button).

Take care in setting passwords

- Remember your passwords. If you forget your power-on password, you have to take your computer to an IBM reseller or marketing representative to have the password canceled.

Attention: If you forget your hard disk password, IBM will not reset your password or recover data from the hard disk. You must take your computer to an IBM reseller or an IBM marketing representative to have the hard disk drive replaced. Proof of purchase is required, and a fee will be charged for parts and service.

Attention: You might want to note your password and keep it in a safe place. If you forget your supervisor password, IBM will not reset your password. You must take your computer to an IBM reseller or IBM marketing representative to have the system board replaced. Proof of purchase is required, and a fee will be charged for parts and service.

Other important tips

- Your computer modem may use only an analog telephone network, or public-switched telephone network (PSTN). Do not connect the modem to a

Caring for your ThinkPad computer

PBX (private branch exchange) or any other digital telephone extension line because this could damage your modem. Analog phone lines are often used in homes, while digital phone lines are often used in hotels or office buildings. If you are not sure which kind of phone line you are using, contact your telephone company.

- Your computer might have both an Ethernet connector and a modem connector. If so, be sure to connect your communication cable to the correct one, so your connector is not damaged. See Access ThinkPad, your on-board help system, for information on the location of these connectors (press the ThinkPad button to open Access ThinkPad).
- Register your ThinkPad products with IBM (refer to the Web page: **www.pc.ibm.com/register**). This can help authorities return your computer to you if it is lost or stolen. Registering your computer also enables IBM to notify you about possible technical information and upgrades.
- Only an authorized IBM ThinkPad repair technician should disassemble and repair your computer.
- Do not modify or tape the latches to keep the display open or closed.
- Take care not to turn your computer over while the ac adapter is plugged in. This could break the adapter plug.
- Turn off your computer if you are replacing a device in a device bay.
- If you exchange drives in your computer, reinstall the plastic bezel faces (if supplied).
- Store your external and removable hard disk, diskette, CD and DVD drives in the appropriate containers or packaging when they are not being used.

Cleaning your computer

Occasionally clean your computer as follows:

- Use a soft cloth moistened with nonalkaline detergent to wipe the exterior of the computer.
- Avoid spraying cleaner directly on the display or the keyboard.
- Gently wipe the display with a dry, soft cloth.

Chapter 2. Solving computer problems

Diagnosing problems	10	Hard disk drive problems	26
Troubleshooting	11	CD-ROM, DVD-ROM, CD-RW,	
Error codes or messages	11	CD-RW/DVD drive problems	26
Errors without codes or messages	15	Software problems	28
A password problem	17	Other problems	28
A power switch problem	17	Starting BIOS Setup Utility	30
Keyboard problems	17	Recover pre-installed software	31
TrackPoint problems	19	Installing a new operating system and device	
Infrared port problems	20	drivers	32
Standby or hibernation problems	21	Backing up your system	33
Computer screen problems	23	Backing up your registry	33
An external monitor problem	25	Backing up data	34
A television problem	25	Replacing the hard disk drive	35
Battery problems	25	Replacing the battery	37

Diagnosing problems

If you have a problem with your computer, you can test it by using PC-Doctor® for Windows®. To run PC-Doctor for Windows, do as follows:

1. Click **Start**.
2. Move the cursor to **Programs** and then to **PC-Doctor for Windows**.
3. Click **PC-Doctor for Windows**.
4. Choose either the **Run Quick Test Set** or the **Run Normal Test Set**.

Attention

Running the Quick Test Sset can take 10 minutes or longer. Make sure you have time to run the entire test; do not interrupt the test while it is running.

The Quick Test Set runs many tests of critical hardware components, but it does not run all of the diagnostic test in PC-Doctor for Windows. If PC-Doctor for Windows reports that all of the tests in the Quick Test Set have been run and that it has found no problems, consider running additional tests.

If you are preparing to contact IBM for support, be sure to print the test log so that you can rapidly provide information to the help technician.

Troubleshooting

If you do not find your problem here, refer to Access ThinkPad, your on-board help system. Open Access ThinkPad by pressing the ThinkPad button. The following section only describes problems that might prevent you from accessing this help system.

Error codes or messages

Note:

1. In the descriptions below, x can represent any character.
2. The version of PC-Doctor referred to here is PC-Doctor for Windows.

Message: 0175: Bad CRC1, stop POST task

Solution: The EEPROM checksum is not correct (block #6). Have the computer serviced.

Message: 0187: EAIA data access error

Solution: The access to EEPROM is failed. Have the computer serviced.

Message: 0188: Invalid RFID serialization information area or bad CRC2.

Solution: The EEPROM checksum is not correct (block # 0 and 1, or block # 6). The system board should be replaced, and the box serial number needs to be reinstalled. Have the computer serviced.

Message: 0189: Invalid RFID configuration information area

Solution: The EEPROM checksum is not correct (block # 4 and 5). The system board should be replaced, and the UUID needs to be reinstalled. Have the computer serviced.

Message: 0190: Critical low-battery error

Solution: The computer turned off, because the battery is low. Connect the ac adapter to the computer and charge the battery, or replace the battery with a fully charged one.

Message: 0193: RF antenna has been removed

Solution: The RFID antenna that you installed has been removed. Enter the supervisor password to return your computer to the normal operation.

Message: 0194: The computer is carried through the security gate

Solution: The computer has been carried through the security portal gate. Enter the supervisor password to return your computer to the normal operation.

Message: 0200: Hard disk error

Solution: The hard disk is not working. Make sure the hard disk drive is attached firmly. Run the BIOS Setup Utility; then make sure the hard disk drive is not disabled in the Startup menu.

Message: 021x: Keyboard error

Solution: Make sure that there are no objects placed on the keyboard, or if you have one, the external keyboard. Turn off the computer, and turn off all attached devices. Turn on the computer first; then turn on the attached devices.

If you still see the same error code, do the following:

- If an external keyboard is connected, do the following:
 - Turn off the computer and disconnect the external keyboard; then turn on the computer. Make sure that the built-in keyboard operates correctly. If it was, have the external keyboard serviced.
 - Make sure that the external keyboard is connected to the correct connector.
- Test the computer by using PC-Doctor.
 - If the computer stops during the test, have the computer serviced.

Message: 0230: Shadow RAM error

Solution: The shadow RAM failed. Test your computer's memory with PC-Doctor. If you added a memory module just before turning the computer on, reinstall it. Then test the memory with PC-Doctor.

Message: 0231: System RAM error

Solution: The system RAM failed. Test your computer's memory with PC-Doctor. If you added a memory module just before turning the computer on, reinstall it. Then test the memory with PC-Doctor.

Message: 0232: Extended RAM error

Solution: The extended RAM failed. Test your computer's memory with PC-Doctor. If you have increased memory just before turning the computer on, reinstall it. Then test the memory with PC-Doctor.

Message: 0250: System battery error

Solution: The backup battery, which is used to preserve the configuration information, such as the date and time, while the computer is tuned off, is depleted. Replace the battery and run BIOS Setup Utility to verify the configuration. If you still have a problem, have the computer serviced.

Message: 0251: System CMOS checksum bad

Solution: The system CMOS might have been corrupted by an application program. The computer uses the default settings. Run BIOS Setup Utility to reconfigure the settings. If you still see the same error code, have the computer serviced.

Message: 0260: System timer error

Solution: Have the computer serviced.

Message: 0280: Previous boot incomplete

Solution: Your computer was previously unable to complete the boot process.

Turn the computer off; then turn it on to start the BIOS Setup Utility. Verify the configuration and then restart the computer either by choosing the Exit Saving Changes option under the Restart item or by pressing F10.

If you still see the same error code, have the computer serviced.

Message: 02D0: System cache error

Solution: The cache is disabled. Have the computer serviced.

Message: 02F4: EISA CMOS not writable

Solution: Have the computer serviced.

Message: 02F5: DMA test failed

Solution: Have the computer serviced.

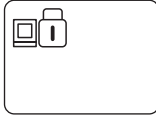
Message: 02F6: Software NMI failed

Solution: Have the computer serviced.

Message: 02F7: Fail-safe timer NMI failed

Solution: Have the computer serviced.

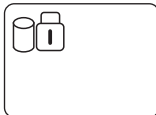
Message: The power-on or supervisor password prompt



Solution: If the power-on password prompt appears when you turn on your computer, a power-on password is set. If the supervisor password prompt appears when you press F1 to access the IBM BIOS Setup Utility, the supervisor password is set. Type the correct password and press Enter to use the computer (see the onboard help, Access ThinkPad). If you still have a problem, have the computer serviced.

Attention: You might want to note your password and keep it in a safe place. If you forget your supervisor password, IBM will not reset your password. You must take your computer to an IBM reseller or IBM marketing representative to have the system board replaced. Proof of purchase is required, and a fee will be charged for parts and service.

Message: The hard disk password prompt



Solution: If the hard disk password prompt appears, a hard disk password is set.

Type the correct password and press Enter to use the computer (see the onboard help, Access ThinkPad).

Attention: If you forget your hard disk password, IBM will not reset your password or recover data from the hard disk. You must take your computer to an IBM reseller or an IBM marketing representative to have the hard disk drive replaced. Proof of purchase is required, and a fee will be charged for parts and service.

If you still have a problem, have the computer serviced.

Message: Hibernation error

Solution: The system configuration changed between the time your computer entered hibernation mode and the time it left this mode, and your computer cannot resume normal operation.

- Restore the system configuration to what it was before your computer entered hibernation mode.
- If the memory size has been changed, re-create the hibernation file.

Message: Operating system not found.

Solution: Verify the following:

- The hard disk drive is correctly installed.
- A startable diskette is in the diskette drive

If you still see the same error message, check the boot sequence using BIOS Setup Utility.

Message: Fan error

Solution: Cooling fan has failed. Have the computer serviced.

Errors without codes or messages

Problem: When I turn on the machine, nothing appears on the screen and the machine does not beep while starting up.

Note: If you are not sure whether you heard any beeps, turn off the computer; then turn it on again and listen. If you are using an external monitor, refer to External monitor problems.

Solution: If a power-on password is set, press any key to display the power-on password prompt, and then type the correct password and press **Enter**.

If the power-on password prompt does not appear, the brightness control might be set to minimum brightness. Adjust the brightness level by pressing Fn+Home.

If the screen still remains blank, make sure that:

- The battery is installed correctly.
- The ac adapter is connected to the computer and the power cord is plugged into a working electrical outlet.
- The computer power is on. (Turn on the power switch again for confirmation.)

Solving computer problems

If these items are properly set, and the screen remains blank, have the computer serviced.

Problem: When I turn on the machine, nothing appears on the screen, but I hear two or more beeps or a continuous beep while starting up.

Solution: If you are using Ethernet:

- Make sure that the Ethernet cable is connected firmly.
- Contact your network administrator.

If the screen is still blank, and beeps are not stopped, have the computer serviced.

Problem: When I turn on the machine, only a white cursor appears on a blank screen.

Solution: First, reboot your system by pressing Ctrl+Alt+Del. If that does not work, hold down the power switch for more than 4 seconds. If this does not resolve the problem, you may need to reinstall your operating system.

Problem: My screen goes blank while the computer is on.

Solution: Your screen saver or power management may be enabled. Move the TrackPoint or press a key to exit the screen saver, or press the power switch to resume from standby or hibernation.

Problem: The computer cannot boot-up.

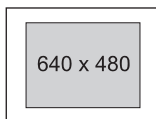
The message "Insert system diskette and press Enter key to reboot" appears.

Solution: Have in hand a bootable diskette, such as the Windows startup diskette, and do as follows:

1. Turn off the computer.
2. Connect the external diskette drive.
3. Insert the bootable diskette into the diskette drive.

The Windows startup diskette can help diagnose the problem. If the problem remains, have the computer serviced.

Problem: The DOS full-screen looks smaller.



Solution: When you use a DOS application that supports only the 640x480 resolution (VGA mode), the screen image might look slightly distorted or smaller than the display size. This is to maintain compatibility with other DOS applications and is not a defect.

To expand the screen image to the same size as the actual screen, start the ThinkPad Configuration program and click **LCD**; then select the **Screen Expansion** function. (The image might look slightly distorted.) See the on-board help, Access ThinkPad for more details.

Problem: The Windows startup screen does not fill the screen.

Solution: When you enable the **Screen Expansion** function in the ThinkPad Configuration program, the Windows startup screen expands but does not fill the entire screen. This is not a defect. (The image might look slightly distorted.) See the on-board help, Access ThinkPad for more details.

A password problem

Problem: I forgot my password.

Solution: If you forget your power-on password, you have to take your computer to an IBM reseller or marketing representative to have the password canceled.

Attention: If you forget your hard disk password, IBM will not reset your password or recover data from the hard disk. You must take your computer to an IBM reseller or an IBM marketing representative to have the hard disk drive replaced. Proof of purchase is required, and a fee will be charged for parts and service.

Attention: You might want to note your password and keep it in a safe place. If you forget your supervisor password, IBM will not reset your password. You must take your computer to an IBM reseller or IBM marketing representative to have the system board replaced. Proof of purchase is required, and a fee will be charged for parts and service.

A power switch problem

Problem: The system does not respond, and you cannot turn off the computer.

Solution: Turn off the computer by pressing and holding the power switch for 4 seconds or more. If the system is still not reset, remove the ac adapter and the battery.

Keyboard problems

Problem: All or some keys on the keyboard do not work.

Solution: If the problem occurred immediately after the computer returned from standby mode, enter the power-on password if one has been set.

If an external keyboard is connected, the numeric keypad on your computer does not work. Use the numeric keypad on the external keyboard.

If an external numeric keypad or a mouse is connected:

1. Turn off the computer.
2. Remove the external numeric keypad or the mouse.
3. Turn on the computer and try using the keyboard again.

If the keyboard problem is resolved, carefully reconnect the external numeric keypad, external keyboard, or mouse, making sure that you have seated the connectors properly.

If keys on the keyboard still do not work, have the computer serviced.

Problem: A number appears when you type a letter.

Solution: The numeric lock function is on. To disable it, press and hold **Shift**; then press **NumLk**.

Problem: All or some keys on the external numeric keypad do not work.

Solution: Make sure that the external numeric keypad is correctly connected to the computer via a port replicator.

Problem: All or some keys on the external keyboard do not work.

Solution: To use an external keyboard, you need to attach it to the computer via a port replicator or through the keyboard/mouse cable. Make sure that:

- The keyboard cable is correctly connected to the computer (if the keyboard is connected to the computer via a port replicator).
- The keyboard/mouse cable is correctly connected to the computer via a port replicator.
- The keyboard cable is connected to the correct side of the keyboard/mouse cable.

If these connections are correct, disconnect the keyboard/mouse cable from the port replicator and make sure that the keyboard operates properly. If the built-in keyboard works, there is a problem with either the cable or with the keyboard. Try using a different keyboard/mouse cable or external keyboard.

Problem: The internal numeric keypad does not work.

Solution: If you connect an external numeric keypad or an external keyboard with a numeric keypad, the internal numeric keypad is disabled. Use the external numeric keypad instead.

TrackPoint problems

Problem: The cursor drifts when the computer is turned on or after it resumes normal operation.

Solution: The cursor might drift when you are not using the TrackPoint during normal operation. This is a normal characteristic of the TrackPoint and is not a defect. Drift might last for several seconds under the following conditions:

- When the computer is turned on.
- When the computer resumes normal operation.
- When the TrackPoint is pressed for a long time.
- When the temperature changes.

Problem: The mouse or pointing device does not work.

Solution: Make sure that the pointing-device is enabled in the Device Manager.

Make sure that the mouse or pointing-device cable is securely connected to the computer via a port replicator.

Try using the TrackPoint. If the TrackPoint works, the error might be due to the mouse.

Note: For more information, see the manual supplied with the mouse.

Problem: The mouse buttons do not work.

Solution: Change the mouse driver to **Standard PS/2 Port Mouse**, and then reinstall **IBM PS/2 TrackPoint**. Drivers are provided in the C:\IBMTTOOLS\DRIVERS directory on your hard disk drive. If your hard disk drive does not contain device drivers, refer to the ThinkPad Service & Support Web site. To access this Web site, open Access ThinkPad by pressing the ThinkPad button, then click the Service & Support image on the right of the screen.

Problem: The scrolling or magnifying glass function does not work.

Solution: Check the mouse driver in the Device Manager window, and make sure that the **IBM PS/2 TrackPoint** driver is installed.

Problem: The cursor does not move after the computer awakens from one of the power management modes.

Solution: Make sure you followed the instructions in the on-board help, Access ThinkPad correctly if you reinstalled Windows with the Advanced Power Management (APM) option.

Infrared port problems

Problem: Your computer cannot communicate with other devices through the infrared port.

Solution: Make sure that:

- The communication speeds are the same.
- The infrared ports are clean.
- No objects are between the computer and the communicating device.
- The distance and angle between your computer and the device are within the specified ranges.
- You are not operating under direct sunlight.
- The infrared port is directly facing the other communication port.
- The communication application running on your computer is compatible with that running on the other computer. Refer to the application manuals for more information.

Problem: Incorrect data is sent between your computer and a communicating device.

Solution: Make sure that:

- The distance and angle between your computer and the device are within the ranges.
- The communication speeds are the same.
- There are no other devices that radiate infrared rays, such as remote-controlled devices or wireless headphones, near your computer or the communicating device.
- You are not operating under direct sunlight.
- No fluorescent lamps are near your computer or the communicating device.

Problem: You cannot use DMA channels for both the parallel connector and the infrared port.

Solution: If you enable ECP and choose DMA3 (the default value) for the parallel connector in the ThinkPad Configuration program, you might be asked whether you want to disable DMA for the infrared port. To use DMA channels for both the parallel and infrared ports, do the following:

1. Click **OK** to disable DMA for the infrared port.
2. Close a parallel port panel.
3. Click the **Infrared device** button to open the infrared panel.
4. Choose DMA0 or DMA1 for the infrared port on the panel.
5. If you see the panel asked whether you want to disable DMA for an audio device, click **OK**.

Standby or hibernation problems

Problem: The computer enters standby mode automatically.

Solution: If the processor reaches a temperature that is too high, the computer will automatically enter standby mode to allow the computer to cool and to protect the processor and other internal components.

Problem: The computer enters standby mode immediately after POST (the standby indicator turns on).

Solution: Make sure that:

- The battery is charged.
- The operating temperature is within the acceptable range. Refer to "Specifications" on page 5.

If these items are correct, have the computer serviced.

Problem: The critical low-battery error appears, and the computer immediately turns off.

Solution: The battery power is getting low. Connect the ac adapter to the computer, or replace the battery with a fully charged one.

Problem: The computer display remains blank after you take action to return from a sleep mode.

Solution: Check if an external monitor was disconnected while the computer was in standby mode. **Do not disconnect the external monitor while the computer is in standby mode or hibernation mode. If no external monitor is attached when the computer resumes, the computer display remains blank and output is not displayed. This restriction does not depend on the resolution value.**

Problem: The computer does not return from standby mode, or the standby indicator stays on and the computer does not work.

Solution: The computer automatically enters standby or hibernation mode when the battery is depleted. Do one of the following:

Solving computer problems

- Replace the battery with a fully charged one and then press Fn.
- Connect the ac adapter to the computer; then press Fn.

Problem: Your computer does not enter standby or hibernation mode.

Solution: Check if any option has been selected to disable your computer from entering standby or hibernation mode.

Problem: The computer does not enter standby mode as set by the timer under Windows 98 or Windows NT.

For Windows 98:

The generic CD or DVD driver for Windows 98 accesses the internal CD or DVD drive every 3 seconds to see if a CD or DVD inserted in the CD or DVD drive. This prevents your computer from entering standby mode even after a timeout. To prevent this from occurring, do the following:

1. Click **Start**.
2. Move the cursor to **Settings** and **Control Panel**.
3. Click **Control Panel**, and then double-click **System**.
4. Click the **Device Manager** tab.
5. Click the + mark of **CD-ROM**.
6. Double-click the name of the CD or DVD drive.
7. Click the **Setting** tab.
8. Clear the **Auto insert notification** check box.

Windows 98 no longer detects the CD or DVD insertion automatically.

For Windows NT:

If you enable the CD-ROM AutoRun feature, the timer cannot trigger the computer to enter standby mode. To enable the timer in this situation, edit the configuration information in the registry as follows:

```
HKEY_LOCAL_MACHINE\SYSTEM\  
CurrentControlSet\Services\Cdrom\  
Autorun: 0x1 > Autorun: 0
```


Computer screen problems

Problem: The screen is blank.

Solution: Press Fn+Home to make the screen brighter. If the problem persists, do the "Solution" in the problem below.

Problem: The screen is unreadable or distorted.

Solution: Make sure that:

- The display device driver is installed correctly.
- The display resolution and color depth are correctly set.
- The monitor type is correct.

To check these settings, do as follows:

For Windows XP:

1. Click **Start** → **Control Panel**.
2. Click **Appearance and Themes** in the Pick a category section.
3. Click **Display** in the Pick a Control Panel icon section.
4. Click the **Settings** tab.
5. Check whether the color depth and resolution are correctly set.
6. Click **Advanced**.
7. Click the **Adapter** tab.
8. Make sure "ATI Mobility Radeon" is shown in the adapter information window.
9. Click the **Monitor** tab.
10. Make sure the information is correct.

For Windows 2000 or Windows 98:

1. Open the Display Properties window, by double-clicking the **Display** icon in the Control Panel.
2. Click the **Settings** tab.
3. Check whether the color depth and resolution are correctly set.
4. Click **Advanced...**
5. Click the **Adapter** tab.
6. Make sure "ATI Mobility Radeon" is shown in the adapter information window.
7. Click the **Monitor** tab.
8. Make sure the information is correct.

For Windows NT:

1. Open the Display Properties window, by double-clicking the **Display** icon in the Control Panel.
2. Double-click the **Display** icon in the Control Panel.
3. Click the **Settings** tab.
4. Check whether the color depth and resolution are correctly set.
5. Click **Display Type....**
6. Make sure "ATI Mobility Radeon" is shown in the adapter type section.

Problem: Incorrect characters appear on the screen.

Solution: Did you install the operating system or application program correctly? If they are installed and configured correctly, have the computer serviced.

Problem: The screen stays on even after you turn off your computer.

Solution: Press and hold the power switch for 4 seconds or over to turn off your computer; then turn it on again.

Problem: Missing, discolored, or bright dots appear on the screen every time you turn on your computer.

Solution: This is an intrinsic characteristic of the TFT technology. Your computer's display contains multiple thin-film transistors (TFTs). A small number of missing, discolored, or bright dots on the screen might exist all the time.

Problem: "Unable to create overlay window" message appears when you start DVD playback, *-or-* you may get poor playback or none at all while running video playback, DVD playback or game applications.

Solution: Do either of the following:

- If you are using the computer display and external monitor simultaneously with 32-bit color mode, change the color depth to 16-bit mode.
- If you are using a desktop size of 1280x1024 or larger, reduce the desktop size and the color depth.

Problem: You see the poor quality screen in DVD playback.

Solution: When you play back DVD by WinDVD in dual display mode, you may need to lower the display resolution and/or the color depth to improve the screen quality.

Problem: The image cannot be expanded to fill the entire screen.

Solution: When the display is set to 640x480 or 800x600 in dual or extended display mode, screen expansion is not supported.

When the color is set to 32-bit and the display is set to 640x480 or 800x600, screen expansion is not supported. Set the color to less than 32 bits.

An external monitor problem

Problem: Display switching (**Fn+F7**) is not supported in a command prompt full-screen session.

Solution: To use display switching (**Fn+F7**), go back to the Windows desktop by pressing **Alt+Enter** or exit the command prompt full-screen session.

A television problem

Problem: "Create overlay failed. Please lower your resolution color depth and try again." message is displayed..

Solution: When you attach and set a TV as the extended monitor and play an MPEG file (DVD) using WinDVD, this message may be displayed. Please lower the display resolution and/or color depth and try again..

Battery problems

Problem: The battery cannot be fully charged by the power-off method in the standard charge time for your computer.

Solution: The battery might be over-discharged. Do the following:

1. Turn off the computer.
2. Make sure that the over-discharged battery is in the computer.
3. Connect the ac adapter to the computer and let it charge.

If the optional Quick Charger is available, use it to charge the over-discharged battery.

If the battery cannot be fully charged in 24 hours, use a new battery.

Problem: Your computer shuts down before the battery status indicator shows empty, *-or-* Your computer operates after the battery status indicator shows empty.

Solution: Discharge and recharge the battery.

Problem: The operating time for a fully charged battery is short.

Solving computer problems

Solution: Discharge and recharge the battery. If your battery's operating time is still short, use a new battery.

Problem: The computer does not operate with a fully charged battery.

Solution: The surge protector in the battery might be active. Turn off the computer for one minute to reset the protector; then turn on the computer again.

Problem: The battery cannot be charged.

Solution: You cannot charge the battery when it is too hot. If the battery feels hot, remove it from the computer and allow it to cool to room temperature. After it cools, reinstall it and recharge the battery. If it still cannot be charged, have it serviced.

Hard disk drive problems

Problem: The hard disk drive makes a rattling noise intermittently.

Solution: The rattling noise might be heard when:

- The hard disk drive starts accessing the data or it stops.
- You carry the hard disk drive.
- You carry your computer.

This is a normal characteristic of a hard disk drive and is not a defect.

Problem: The hard disk drive does not work.

Solution: Use PC-Doctor to test the hard disk drive. If there are problems, have the hard disk drive serviced.

CD-ROM, DVD-ROM, CD-RW, CD-RW/DVD drive problems

Problem: The CD or DVD does not work.

Solution: Make sure that:

- The computer power is turned on and a CD or DVD is properly loaded on the center pivot of the CD or DVD drive. (You should hear a click.)
- The CD or DVD tray is firmly closed.
- The device drivers are correctly installed.

Problem: You hear a noise from the CD or DVD drive when the disc is spinning.

Solution: The CD or DVD drive cover might be bent. Have the computer serviced.

Problem: The CD or DVD tray does not open even if you press the CD or DVD drive eject button.

Solution: Insert a pin into the CD or DVD emergency eject hole and eject the CD or DVD tray.

Problem: The CD or DVD cannot be read.

Solution: Make sure that:

- The CD or DVD is not dirty. If it is, clean it with a CD or DVD cleaner kit.
- The CD or DVD is not defective. If it is, try another CD or DVD.
- The CD or DVD is placed in the tray with the label side up.
- The CD or DVD format conforms with one of the following:
 - Music CD
 - CD-ROM or CD-ROM XA
 - Multisession photo CD
 - Video CD
 - CD-R or CD-RW
 - DVD-ROM (DVD-video)

Note: You can only playback DVD movies if your computer has a DVD-ROM or CD-RW/DVD drive and the DVD movie playback software is installed.

Problem: The DVD movie does not play.

Solution: The region code of the DVD movie you inserted into the DVD-ROM or CD-RW/DVD drive must match the region code you set for the DVD Player software. You can set the region code a maximum of 5 times. If you have not reached the limit, a prompt appears and you change it to the region code of the inserted DVD movie. If not, you will only be able to play DVD movies of the last region you set.

Problem: The control buttons on the DVD movie playback software do not work.

Solution: The DVD movie playback software is reading the DVD. Wait for a few seconds before trying the buttons again.

Problem: A CD cannot be written.

Solving computer problems

Solution: Make sure the CD you placed in the CD-RW or CD-RW/DVD drive is either a CD-R or CD-RW. If you are writing to a CD-R, make sure it is blank.

Note: You can write CDs if your computer has a CD-RW or CD-RW/DVD drive and a CD recording software is installed.

Problem: A written CD has errors.

Solution: Make sure your computer is protected from vibration when writing to a CD. Even typing on the computer will cause vibration that may result in errors in the written CD or even a damaged and unreadable CD.

Note: You can write CDs if your computer has a CD-RW or CD-RW/DVD drive and a CD recording software is installed.

Software problems

Problem: An application does not run correctly.

Solution: Make sure that the problem is not being caused by the application by checking the following:

- Your computer has the minimum required memory to run the application. Refer to the manuals supplied with the application.
- The application is designed to operate with your operating system.
- Other applications run correctly on your computer.
- The necessary device drivers are installed.
- The application works when it is run on some other computer.

If an error message appears when you are using the application program, refer to the manuals supplied with the application.

If the application still does not run correctly, contact your place of purchase or a service representative for help.

Problem: The Windows Safe Mode screen appears.

Solution: Your computer may not have shut down properly the last time. In Safe Mode, shut down and restart your computer.

If you still have a problem, contact your place of purchase or the service representative for help.

Other problems

Problem: The computer locks or does not accept any input.

Solution: Your computer might lock when it enters standby mode during a communication operation. Disable the standby timer when you are working on the network.

To turn off the computer, press and hold the power switch for 4 seconds or more.

Problem: The computer does not turn off with the power switch.

Solution: If the standby indicator is on and you are working under battery power, replace the battery with a fully charged one or change your power source to ac power.

If you still have a problem, press and hold the power switch for 4 seconds or more; this forces the computer to turn off.

Problem: The computer does not start from a device you want, such as a diskette drive.

Solution: Refer to the Startup menu of the **IBM BIOS Setup Utility**. Make sure that the startup sequence in the IBM BIOS Setup Utility is set so that the computer starts from the device you want.

Starting BIOS Setup Utility

Your computer provides a program, called IBM BIOS Setup Utility, that enables you to select various setup parameters. The panels in this utility are as follows:

- **Config:** Set the configuration of your computer.
- **Date/Time:** Set the date and time.
- **Password:** Set a password.
- **Startup:** Set the startup device.
- **Restart:** Restart the system.

Note: You can set some of these parameters more easily by using the ThinkPad Configuration Program. For more information on this program, refer to the on-board help.

To start IBM BIOS Setup Utility, do as follows:

1. To protect yourself against accidental loss of data, refer to “Backing up your registry” in Access ThinkPad. Open Access ThinkPad by pressing the ThinkPad button. Backing up your registry will save your computer’s current configuration.
2. Remove any diskette from the diskette drive, and remove any CD or DVD from the CD or DVD drive; then turn off the computer.
3. Turn on the computer; then, while the “ Press F1 for IBM BIOS Setup Utility ” message is displayed at the lower-left of the screen, press F1.

If you have set a supervisor password, the “IBM BIOS Setup Utility” menu appears after you enter the password. You can start the utility by pressing Enter instead of entering the supervisor password; then, however, you cannot change the parameters that are protected by the supervisor password. For more information, refer to the on-board help provided with your computer.

4. Using the cursor keys, move to an item you want to change. When the item you want is highlighted, press Enter. A submenu is displayed.
5. Change the items you want to change. To change the value of an item, use the F5 or F6 key. If the item has a submenu, you can display it by pressing Enter.
6. Press F3 or Esc to exit from the submenu.

If you are in a nested submenu, press Esc repeatedly until you reach the IBM BIOS Setup Utility menu.

Note: If you need to restore the settings to their original state as of the time of purchase, press the F9 key to load the default settings. You can also select an option in the Restart submenu to load the default settings or discard the changes.

7. Select **Restart**; then press Enter. Change the option you want; then press Enter. Your computer restarts.

Recover pre-installed software

If the data on your hard disk drive is damaged or accidentally erased, you can restore the software that was shipped with your computer. This software includes your pre-installed operating system, applications, and device drivers.

To restore your pre-installed software, you can use the Product Recovery program.

The Product Recovery program is in a section of your hard disk drive that is not displayed by Windows Explorer.

Note: The recovery process might take up to 2 hours.

Attention

All of the files on the primary hard disk partition (usually drive C) will be lost in the recovery process. Be sure to back up copies of the files you have saved on your drive C before you begin.

Note: You might need to use a diskette drive in the recovery process. Use a drive that is compatible with your computer.

To use the Product Recovery program to restore your pre-installed software, do the following:

1. Save all your files and shut down your desktop.
2. Turn off your computer.
3. Turn on your computer. Quickly press F11 when this message is displayed on the screen: "To start the Product Recovery program, press F11." This message is displayed for only a few seconds.

Note: If this message is not displayed, you can use a **Recovery Repair diskette** to get access to the Product Recovery program.

4. From the list displayed on the screen, select the operating system you want to recover.
5. Select the recovery options you want, and follow the instructions on the screen.
6. Restart the system. Your computer will restart with the pre-installed operating system, drivers, and software.

To create a Recovery Repair diskette

When the operating system cannot boot normally, you can use the Recovery Repair diskette to boot your computer. Make a Recovery Repair diskette and save it for future use. To make a Recovery Repair diskette:

1. Shut down and restart your computer.
2. Attach the external diskette drive to the computer.
3. At the prompt, press F11. (The option to press F11 appears for only a few seconds. You must press F11 quickly.) The Product Recovery program main menu appears.
4. Select **System Utilities** from the main menu. Press Enter.
5. Select **Create a Recovery Repair** diskette. Press Enter.
6. Follow the on-screen instructions.
7. When the process is completed, label your diskette as the Recovery Repair diskette and save it for future use.

To use the Recovery Repair diskette:

1. Shut down and turn off your computer.
2. Attach the external diskette drive to the computer.
3. Insert the Recovery Repair diskette into the drive; then turn on the computer.
4. Follow the on-screen instructions.

Installing a new operating system and device drivers

If you install a new operating system on your computer, you need to install the ThinkPad[®] device drivers for it at the same time.

The device drivers are provided in the C:\IBMTTOOLS\DRIVERS directory on your hard disk drive. The software applications are provided in the C:\IBMTTOOLS\APPS directory on your hard disk drive. Operating system updates are provided in the C:\IBMTTOOLS\OSFIXES directory on your hard disk drive. These directories also contain text files explaining how to install the drivers.

Note: If you cannot find the device drivers you need on your hard disk drive, or if you want to receive updates and the latest information about them, refer to the ThinkPad Service & Support Web site. To access this Web site, open Access ThinkPad by pressing the ThinkPad button; then click the Service & Support image on the right of the screen.

For instructions on how to install a new operating system, see the on-board help, Access ThinkPad.

Backing up your system

Backing up your registry

When you add software applications or devices to your computer, the installation process may change your registry and configuration.

If your computer does not work properly after you add applications or devices, you need to restore the previous registry.

Before you make changes, backup the configuration. If something goes wrong, you can restore the system registry and configuration files.

You can use ConfigSafe (for Windows 98 and Windows 2000) or System Restore (for Windows XP) to save the configuration before you make changes. Then if something goes wrong, use ConfigSafe or System Restore to restore the system registry and configuration files.

For Windows XP:

To capture a snapshot of your system configuration, or to restore your configuration to an earlier snapshot using Windows XP:

1. Click **Start** → **Control Panel**.
2. Click **Performance and Maintenance** in the Pick a category section.
3. Click **System Restore** in the Pick a task... section.
4. Follow the on-screen instructions.

If you need to restore a configuration snapshot, open ConfigSafe and follow the on-screen instructions.

For Windows 2000 or Windows 98:

To capture a snapshot of your system configuration with ConfigSafe:

1. Click **Start** → **Programs** → **ConfigSafe** → **ConfigSafe**.
2. Double-click **ConfigSafe**. The window opens.
3. Click the **camera** icon.
4. Type a name for the snapshot. For example, before installing a word processor, you might type, "Before installing a word processor."
5. Click **OK**.
6. After a few moments, the main ConfigSafe window will return. The snapshot is complete.

If you need to restore a configuration snapshot, open ConfigSafe and follow the on-screen instructions.

Backing up data

Hard disks are reliable data storage devices. However, you should protect yourself against accidental data loss or the unlikely event of a hard disk malfunction by backing up your important files regularly.

For Windows XP:

To back up data, start the backup application as follows:

1. Click **Start** → **Control Panel**.
2. Click **Performance and Maintenance** in the Pick a category section.
3. Click **Back up my data** in the Pick a task... section.
4. Follow the on-screen instructions.

For Windows 2000 or Windows 98:

To back up data, start the backup application as follows:

1. Click **Start**.
2. Move the cursor to **Programs, Accessories, System Tools, and Backup**.
3. Click **Backup**.

Make sure that the **Create a new backup job** button is marked in the Microsoft Backup window.

4. Click **OK**. The Backup Wizard will guide you through backing up some or all of the files on your hard disk.

Replacing the hard disk drive

You can increase the storage capacity of your computer by replacing the hard disk drive with one of greater capacity. You can purchase a new hard disk drive from your IBM reseller or IBM marketing representative.

Note: Replace the hard disk drive only if you upgrade it or have it repaired. The connectors and bay of the hard disk drive were not designed for frequent changes, or drive swapping.

Attention

Handling a hard disk drive

- Do not drop the drive or subject it to physical shocks. Put the drive on a material, such as soft cloth, that absorbs the physical shock.
- Do not apply pressure to the cover of the drive.
- Do not touch the connector.

The drive is very sensitive. Incorrect handling can cause damage and permanent loss of data on the hard disk. Before removing the hard disk drive, make a backup copy of all the information on the hard disk drive, and then turn the computer off. Never remove the drive while the system is operating, in standby mode, or in hibernation mode.

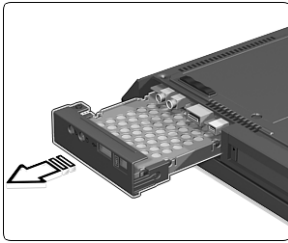
To replace the hard disk drive, do the following:

1. **Turn off the computer;** then disconnect the ac adapter and all cables from the computer.
2. Close the computer display, and turn the computer over.
3. Remove the battery.
4. Remove the screw that secures the hard disk drive.

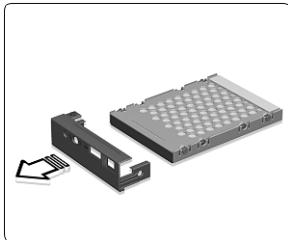


Replacing the hard disk drive

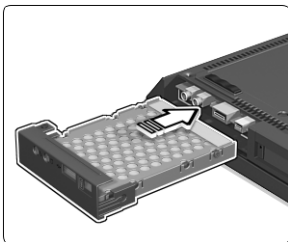
5. Remove the hard disk drive by pulling the cover away from the computer.



6. Detach the cover from the hard disk drive.



7. Attach the cover to a new hard disk drive.
8. Insert the hard disk drive and its cover into the hard disk drive bay; then secure it with the screw.



9. Reinstall the battery.
10. Turn the computer over. Connect the ac adapter and cables to the computer.

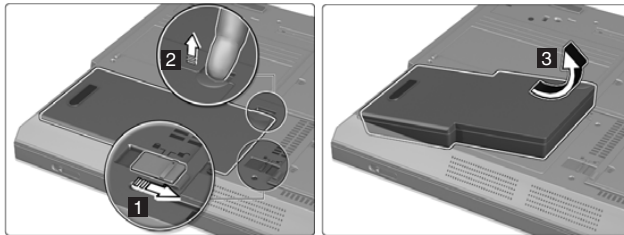
Replacing the battery

To replace the battery, do as follows:

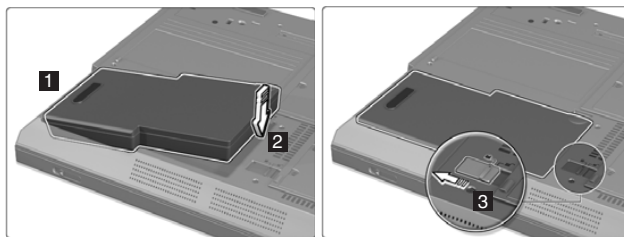
1. **Turn off the computer, or enter hibernation mode.** Then disconnect the ac adapter and all cables from the computer.

Note: If you are using a PC Card, the computer may not be able to enter hibernation mode. If this happens, turn off the computer.

2. Close the computer display, and turn the computer over.
3. Remove the battery.
 - a. Slide and hold the battery latch in the unlock position **1**.
 - b. Insert your finger in the notch and lift up the battery **2**.
 - c. Pull up and remove the battery **3**.



4. Reinstall the battery.
 - a. Insert the end of the battery (with the rubber feet) into the battery compartment **1**.
 - b. Let down the other end of the battery securely into the battery compartment **2**.
 - c. Slide the battery latch to the lock position **3**.



5. Turn the computer over again. Connect the ac adapter and the cables to the computer.

Replacing the battery

Chapter 3. Getting help and service from IBM

Getting help and service	40	Calling IBM	41
Getting help on the Web	40	Getting help around the world.	43
Getting help by fax	41		

Getting help and service

If you need help, service, technical assistance, or just want more information about IBM products, you will find a wide variety of sources available from IBM to assist you. This section contains information about where to go for additional information about IBM and IBM products, what to do if you experience a problem with your computer, and whom to call for service should it be necessary.

Information about your IBM computer and preinstalled software, if any, is available in the documentation that comes with your computer. That documentation includes printed books, online books, README files, and help files. In addition, information about IBM products is available on the World Wide Web and through the IBM Automated Fax System.

For technical assistance with the installation of, or questions related to, Service Packs for your preinstalled Microsoft® Windows product, refer to the Microsoft Product Support Services Web site at support.microsoft.com/directory/, or you can contact the IBM HelpCenter®. Some fees might apply.

Getting help on the Web

On the World Wide Web, the IBM Web site has up-to-date information about IBM Personal Computer products and support. The address for the IBM Personal Computing home page is **www.ibm.com/pc**

IBM provides an extensive Web site dedicated to mobile computing and to ThinkPad computers at **www.ibm.com/pc/support**

Research this Web site to learn how to solve problems, find new ways to use your computer, and learn about options that can make working with your ThinkPad computer even easier.

If you select **Profile** from the support page, you can create a customized support page that is specific to your hardware, complete with Frequently Asked Questions, Parts Information, Technical Hints and Tips, and Downloadable Files. In addition, you can choose to receive e-mail notifications whenever new information becomes available about your registered products.

You also can order publications through the IBM Publications Ordering System at **www.elink.ibm.link.ibm.com/public/applications/publications/cgibin/pbi.cgi**

Getting help by fax

If you have a touch-tone telephone and access to a fax machine, in the U.S. and Canada you can receive by fax marketing and technical information on many topics, including hardware, operating systems, and local area networks (LANs).

You can call the IBM Automated Fax System 24 hours a day, 7 days a week. Follow the recorded instructions, and the requested information will be sent to your fax machine. In the U.S. and Canada, to access the IBM Automated Fax System, call 1-800-426-3395.

Calling IBM

If you have tried to correct the problem yourself and still need help, during the warranty period, you can get help and information by telephone through the IBM PC HelpCenter. The following services are available during the warranty period:

- Problem determination - Trained personnel are available to assist you with determining if you have a hardware problem and deciding what action is necessary to fix the problem.
- IBM hardware repair - If the problem is determined to be caused by IBM hardware under warranty, trained service personnel are available to provide the applicable level of service.
- Engineering change management - Occasionally, there might be changes that are required after a product has been sold. IBM or your reseller, if authorized by IBM, will make selected Engineering Changes (ECs) available that apply to your hardware.

The following items are not covered:

- Replacement or use of non-IBM parts or nonwarranted IBM parts

Note: All warranted parts contain a 7-character identification in the format IBM FRU XXXXXXX

- Identification of software problem sources
- Configuration of BIOS as part of an installation or upgrade
- Changes, modifications, or upgrades to device drivers
- Installation and maintenance of network operating systems (NOS)
- Installation and maintenance of application programs

Refer to your IBM hardware warranty for a full explanation of IBM warranty terms. Be sure to retain your proof of purchase to obtain warranty service.

If possible, be near your computer when you make your call in case the technical assistance representative needs to help you resolve a computer problem. Please ensure that you have downloaded the most current drivers and system updates, run diagnostics, and recorded information before you call. When calling for technical assistance, please have the following information available:

- Machine Type and Model
- Serial numbers of your computer, monitor, and other components, or your proof of purchase
- Description of the problem
- Exact wording of any error messages
- Hardware and software configuration information for your system

Telephone numbers

Before you call, use Access ThinkPad to find information about your computer. Access ThinkPad includes a comprehensive, on-board help and information center for your computer and includes information such as installing additional memory. It travels with you, eliminating the need to carry reference manuals. Press the ThinkPad button to open Access ThinkPad.

Note: Telephone numbers are subject to change without notice. For the latest list of IBM HelpCenter telephone numbers and hours of operation, visit the Support Web site at www.ibm.com/pc/support.

Country or region	Language	Telephone Number
Argentina	Spanish	0800-666-0011
Australia	English	1300-130-426
Austria	German	01-24592-5901
Bolivia	Spanish	0800-0189
Belgium	Dutch	02-210-9820
	French	02-210-9800
Brazil	Portuguese	55-11-3889-8986
Canada	English/ French	1-800-565-3344
		416-383-3344
Chile	Spanish	800-224-488
China	Mandarin	800-810-1818
China (Hong Kong S.A.R.)	Cantonese/ English/ Putonghua	2825-7799

Country or region	Language	Telephone Number
Colombia	Spanish	980-912-3021
Denmark	Danish	45 20 82 00
Ecuador	Spanish	1-800-426911 (option #4)
Finland	Finnish	09-459 69 60
France	French	02 38 55 74 50
Germany	German	07032-1549 210
Ireland	English	01-815 9200
Italy	Italian	02-7031-6101
Japan	Japanese	
Luxembourg	French	298-977 5063
Mexico	Spanish	001-866-434-2080
Netherlands	Dutch	020-514 5770
New Zealand	English	0800-446-149
Norway	Norwegian	66 81 11 00
Peru	Spanish	0-800-50-866
Portugal	Portuguese	21-791 51 47
Russia	Russian	095-940-2000
Spain	Spanish	91-662 49 16
Sweden	Swedish	08-477 4420
Switzerland	German/ French/ Italian	0583-33-09-00
Taiwan	Mandarin	886-2-2725-9799
United Kingdom	English	01475-555 055
United States	English	1-800-772-2227
Uruguay	Spanish	000-411-005-6649
Venezuela	Spanish	0-800-100-2011

Getting help around the world

If you travel with your computer or relocate it to a country where your ThinkPad machine type is sold and serviced by IBM or by IBM resellers who are authorized to perform warranty service, International Warranty Service is available for your computer.

Service methods and procedures vary by country, and some services might not be available in all countries. International Warranty Service is delivered

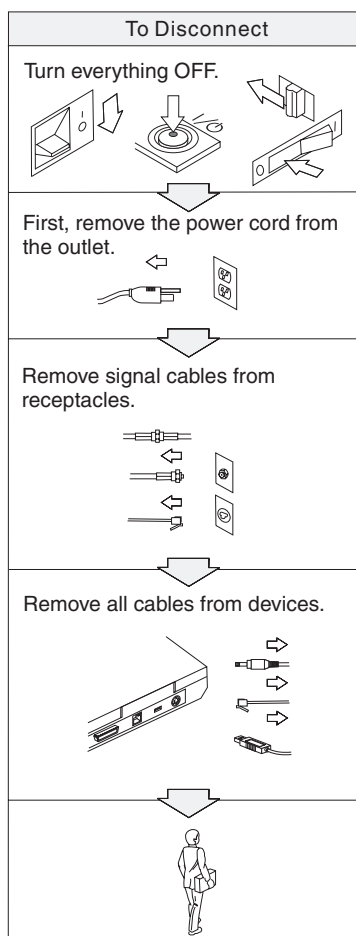
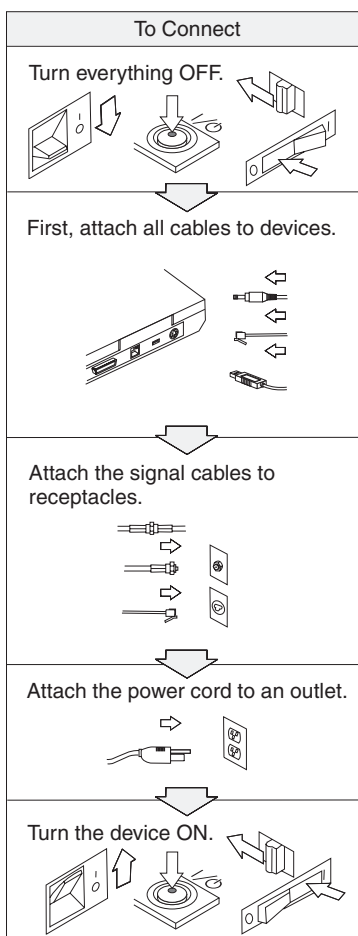
through the method of service (such as depot, carry-in, or on-site service) that is provided in the servicing country. Service centers in certain countries might not be able to service all models of a particular machine type. In some countries, fees and restrictions might apply at the time of service.

To determine whether your computer is eligible for International Warranty Service and to view a list of the countries where service is available, go to <http://www.ibm.com/pc/support/>, and click **Warranty Lookup**. Eligible IBM computers are identified by their four-digit machine types. For more information about International Warranty Service, see Service Announcement 601-034 at <http://www.ibm.com/>. Click **Support & downloads**, click **Announcement letters**, and click **Announcements search**. In the **Search by letter number only** field, type 601-034 , and click **Search**.

Appendix A. Important safety instructions



Electric current from power, telephone, and communication cables is hazardous. To avoid shock hazard, connect and disconnect cables as shown below when installing, moving, or opening the covers of this product or attached devices. The 3-pin power cord must be used with a properly grounded outlet.





Reduce the risk of fire and electric shock by always following basic safety precautions, including the following:

- Do not use your computer in or near water.
- During electrical storms:
 - Do not use your computer with the telephone cable connection.
 - Do not connect the cable to or disconnect it from the telephone outlet on the wall.



If the rechargeable battery pack is incorrectly replaced, there is danger of an explosion. The battery pack contains a small amount of harmful substances. To avoid possible injury:

- Replace only with a battery of the type recommended by IBM, or an equivalent.
- Keep the battery pack away from fire.
- Do not expose it to water or rain.
- Do not attempt to disassemble it.
- Do not short-circuit it.
- Keep it away from children.

Do not put the battery pack in trash that is disposed of in landfills. When disposing of the battery, comply with local ordinances or regulations and your company's safety standards.



If the backup battery is incorrectly replaced, there is danger of explosion.

The lithium battery contains lithium and can explode if it is not properly handled or disposed of.

Replace only with a battery of the same type.

To avoid possible injury or death, do not: (1) throw or immerse the battery into water, (2) allow it to heat to more than 100 °C (212 °F), or (3) attempt to repair or disassemble it. Dispose of it as required by local ordinances or regulations and your company's safety standards.

CAUTION:

When you have added or upgraded a memory card, do not use your computer until you have closed the cover. Never use the computer when the cover is open.

CAUTION:

The fluorescent lamp in the liquid crystal display (LCD) contains mercury. Do not put it in trash that is disposed of in landfills. Dispose of it as required by local ordinances or regulations.

The LCD is made of glass, and rough handling or dropping the computer can cause the LCD to break. If the LCD breaks and the internal fluid gets into your eyes or on your hands, immediately wash the affected areas with water for at least 15 minutes; if any symptoms are present after washing, get medical care.

CAUTION:

To reduce the risk of fire, use only No. 26 AWG or larger (thicker) telephone cable.

Modem safety information

To reduce the risk of fire, electrical shock, or injury when using telephone equipment, always follow basic safety precautions, such as:

Never install telephone wiring during a lightning storm.

Never install telephone jacks in wet locations unless the jack is specifically designed for wet locations.

Never touch uninsulated telephone wires or terminals unless the telephone line has been disconnected at the network interface.

Use caution when installing or modifying telephone lines.

Avoid using a telephone (other than a cordless type) during an electrical storm. There may be a remote risk of electric shock from lightning.

Do not use the telephone to report a gas leak in the vicinity of the leak.

Laser compliance statement

An optical storage drive (device), such as a CD-ROM, CD-RW, DVD-ROM, or CD-RW/DVD drive, which can be installed in the IBM ThinkPad computer is a laser product. The drive's classification label (shown below) is on the surface of the drive.

CLASS 1 LASER PRODUCT
LASER KLASSE 1
LUOKAN 1 LASERLAITE
APPAREIL ALASER DE CLASSE 1
KLASS 1 LASER APPARAT

The drive is certified in the U.S. to conform to the requirements of the Department of Health and Human Services 21 Code of Federal Regulations (DHHS 21 CFR) Subchapter J for Class I laser products.

In other countries, the drive is certified to conform to the requirements of EN60825.



DANGER

Do not open the optical storage drive unit; no user adjustments or serviceable parts are inside.

Use of controls, adjustments, or the performance of procedures other than those specified might result in hazardous radiation exposure.

Class 1 laser products are not considered hazardous. The design of the laser system and the optical storage drive ensures that there is no exposure to laser radiation above a Class 1 level during normal operation, user maintenance, or servicing.

Some drives contain an embedded Class 3A laser diode. Note this warning:



DANGER

Emits visible and invisible laser radiation when open. Avoid direct eye exposure. Do not stare into the beam or view it directly with optical instruments.

Save these instructions.

Appendix B. Wireless Related Information

Wireless Interoperability

IBM ThinkPad 802.11b Wireless LAN Mini-PCI Adapter (hereafter called Wireless LAN Mini-PCI Adapter) is designed to be interoperable with any wireless LAN product that is based on Direct Sequence Spread Spectrum (DSSS) radio technology, and is compliant to:

- The IEEE 802.11 Standard on Wireless LANs (Revision B), as defined and approved by the Institute of Electrical and Electronics Engineers.
- The Wireless Fidelity (WiFi) certification as defined by the WECA (Wireless Ethernet Compatibility Alliance).

Usage environment and your Health

Wireless LAN Mini-PCI Adapter emits radio frequency electromagnetic energy like other radio devices. However, the level of energy emitted is far less than the electromagnetic energy emitted by wireless devices like, for example, mobile phones.

Because Wireless LAN Mini-PCI Adapter operates within the guidelines found in radio frequency safety standards and recommendations, IBM believes High Rate Wireless LAN is safe for use by consumers. These standards and recommendations reflect the consensus of the scientific community and the result from deliberations of panels and committees of scientists who continually review and interpret the extensive research literature.

In some situations or environments, the use of High Rate Wireless LAN may be restricted by the proprietor of the building or responsible representatives of the organization. These situations may, for example, include:

- Using High Rate Wireless LAN on board of airplanes, or in hospitals
- In any other environment where the risk of interference to other devices or services is perceived or identified as harmful.

If you are uncertain of the policy that applies to the use of wireless devices in a specific organization (e.g. airport), you are encouraged to ask for authorization to use Wireless LAN Mini-PCI Adapter prior to turning on the ThinkPad R32 computer.

Appendix C. Wireless Regulatory Information

The ThinkPad R32 computer must be installed and used in strict accordance with the instructions as described hereafter. This product complies with the following radio frequency and safety standards.

USA - Federal Communications Commission (FCC)

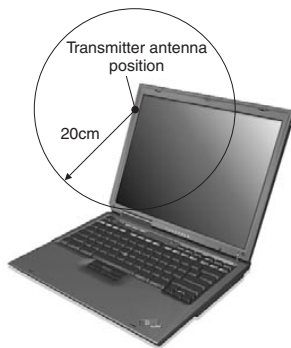
This device complies with part 15 of the FCC Rules. Operation is subject to the following two conditions:

1. This device may not cause harmful interference, and
2. this device must accept any interference received, including interference that may cause undesired operation.

The FCC RF Safety Requirement

The radiated output power of Wireless LAN Mini-PCI Adapter is far below the FCC radio frequency exposure limits. Nevertheless, the ThinkPad R32 computer shall be used in such a manner that the potential for human contact during normal operation is minimized as follows:

- **CAUTION:** To comply with FCC RF exposure compliance requirements, a separation distance of at least 20 cm (8 inches) must be maintained between the antenna of this device and all persons.



- Please make sure of the following when you use a Bluetooth option or wireless PCMCIA card in your ThinkPad notebook:
 1. Visit the IBM site at www.ibm.com/pc/qtechinfo/MIGR-39377.html and confirm the updated list of RF option devices that have been approved to cooperate with the integrated wireless feature.

2. When you use any other RF option device that is not listed on the IBM site, all other wireless features including the integrated transmitter in your ThinkPad notebook are required to be turned off.
3. Users are requested to follow the RF Safety instructions on wireless option devices that are included in the RF option device's user's manual.

Interference Statement

An improper installation or unauthorized use may cause harmful interference to radio communications. Also, any tampering of the internal antenna will void the FCC certification and your warranty. Refer to "Electronic emission notices" on page 72 for more detail.

Canada – Industry Canada (IC)

Certification number

The term "IC" before the equipment certification number only signifies that the Industry Canada technical specifications were met.

Low Power License-Exempt Radiocommunication Devices (RSS-210)

Operation is subject to the following two conditions: (1) this device may not cause interference, and (2) this device must accept any interference, including interference that may cause undesired operation of the device.

Numéro d'homologation signifie

Le terme "IC" avant le numéro d'homologation signifie seulement que les normes d'Industrie Canada ont été respectées.

Permis d'émission à faible puissance - Cas des appareils de communications radio (CNR-210)

Le fonctionnement de ce type d'appareil est soumis aux deux conditions suivantes : (1) Cet appareil peut perturber les communications radio, et (2) cet appareil doit supporter toute perturbation, y compris les perturbations qui pourraient provoquer un dysfonctionnement.

Europe – CE Declaration of Conformity

- Hereby Actiontec Electronics, Inc. declares that the RLAN device integrated in this product is in conformity with the essential requirements and other relevant provisions of Directive 1999/5/EC.

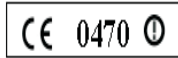
IBM cannot accept responsibility for any failure to satisfy the protection requirements resulting from a non-recommended modification of the product.

- Actiontec Electronics, Inc. déclare par la présente que le dispositif RLAN intégré à ce produit est en conformité avec les prescriptions essentielles et autres dispositions appropriées de la Directive 1999/5/EC.

IBM décline toute responsabilité en cas de non-respect de cette directive résultant d'une modification non recommandée du produit.

- Actiontec Electronics, Inc. erklärt hiermit, dass die in diesem Produkt integrierte drahtlose RLAN-Einheit die Voraussetzungen sowie alle wichtigen Anforderungen der Richtlinie 1999/5/EC erfüllt.

IBM übernimmt keine Verantwortung für Fehler, die sich aus einer nicht empfohlenen, unsachgemäßen Modifizierung an diesem Produkt zur Erfüllung der Sicherheitsanforderungen ergeben.





CE Declaration of Conformity

Date: April 27, 2001
Supplier Name: Actiontec Electronics, Inc.
Supplier Address: 760 North Mary Ave.,
Sunnyvale, CA 94086

Declares under our sole responsibility that the following product -

Equipment : 802.11b Wireless LAN Mini-PCI Adapter with 56K Modem
Model Name : Actiontec 802MIP

Conforms to the following normative European, and International Standards -

Normative Standards:	<u>EN 55022: 1998</u>	Information Technology Equipment, Radio Disturbance Characteristics, Limits and Methods of Measurement
	<u>EN 55024: 1998</u>	Information Technology Equipment, Immunity Characteristics, Limits and Methods of Measurement
	<u>EN 60950: 1992</u>	LVD Measurement and Testing with Amendment A11: 1997
	<u>ENV 50166-2:1995</u>	Human Exposure to Electromagnetic Fields - High Frequency
	<u>EN 300 328-2: 2000</u>	Data Transmission Equipment Operating in the 2.4 GHz ISM Band
	<u>EN 301-489-17: 2000</u>	Specific Conditions for Wideband Data and Hyperlan Equipment
	<u>CTR21: 1998</u>	Analog PSTN non-voice Standard

We hereby verify that the equipment above listed has tested for compliance with -

The European Council Directive 89/336/EEC
The Low Voltage Directive 73/23/EEC & The Amendment Directive 93/68/EEC
Radio & Telecommunications Terminal Equipment Directive (R&TTE) 1999/5/EC

****Note: Full test reports have been provided.**

Product conformance to cited product specifications are based on sample (type) testing, evaluation, or assessment at the following two testing laboratories as well as the TCF are kept:

1. Nemko Dallas, Inc. located in 802 N. Kealy, Lewisville, TX 75057
2. Bay Area Compliance Lab. Corp. located in 230 Commercial St., Suite 2, Sunnyvale, CA 94086


Angela Xiao, Program Manager
Actiontec Electronics, Inc.

Actiontec Electronics, Inc.
<http://www.actiontec.com>

Corporate Headquarters: 760 North Mary Avenue • Sunnyvale • CA • 94086 • Phone (408) 752-7700 • Fax (408) 541-0007

RLAN (maximum power > 10 mW and < 100 mW)

- Belgie B	Gebruik buiten gebouw alleen op kanalen 10 (2462 MHz) en 11 (2467 MHz). Voor privé-gebruik buiten gebouw over publieke grond over afstand kleiner dan 300m geen registratie bij BIPT/IBPT nodig; voor gebruik over afstand groter dan 300m is wel registratie bij BIPT/IBPT nodig. Voor publiek gebruik buiten gebouwen is licentie van BIPT/IBPT verplicht. Voor registratie of licentie kunt u contact opnemen met BIPT.
- Belgium B	For outdoor usage only channel 10 (2462 MHz) and 11 (2467 MHz) is allowed. For private usage outside buildings across public grounds over less than 300m no special registration with IBPT/BIPT is required. Registration to IBPT/BIPT is required for private usage outside buildings across public grounds over more than 300m. An IBPT/BIPT licence is required for public usage outside building. For registration and license please contact IBPT/BIPT.
- Belgique B	L'utilisation en extérieur est autorisé sur le canal 10 (2462 MHz) et 11 (2467 MHz). Dans le cas d'une utilisation privée, à l'extérieur d'un bâtiment, au-dessus d'un espace public, aucun enregistrement n'est nécessaire pour une distance de moins de 300m. Pour une distance supérieure à 300m un enregistrement auprès de l'IBPT est requise. Pour une utilisation publique à l'extérieur de bâtiments, une licence de l'IBPT est requise. Pour les enregistrements et licences, veuillez contacter l'IBPT.
- France F:	A l'intérieur des bâtiments, utilisation sans contrainte géographique avec puissance maximale de 100 mW dans la bande 2446.5–2483.5 MHz. A l'extérieur des batiments, utilisation non autorisée. Vous pouvez contacter l'Autorité de Régulation des Télécommunications (http://www.art-telecom.fr) pour tout aute cas particulier.
- France F:	Indoor, no geographical restriction with a maximum power of 100 mW within the band of 2446.5–2483.5 MHz. Outdoor, the band is not opened. Please contact ART for any other specific case.
- Deutschland D:	Anmeldung im Outdoor-Bereich notwendig, aber nicht genehmigungspflichtig. Bitte mit Händler die Vorgehensweise abstimmen.
- Germany D:	License required for outdoor installations.

- Italia I:	È necessaria la concessione ministeriale anche per l'uso interno. Verificare con i rivenditori la procedura da seguire. L'uso per installazione in esterni non è permessa.
- Italy I:	License required for indoor use. Use with outdoor installations not allowed
- the Netherlands NL	License required for outdoor installations.
- Nederland NL	Licentie verplicht voor gebruik met buitenantennes.

Notice for Users in Singapore

The Wireless LAN Mini-PCI Adapter included in this equipment is for use only within the confined area of a building. The equipment is restricted to operating within the 2445–2483.5 MHz band.

Appendix D. Warranty Information

This appendix contains warranty information for your ThinkPad computer, warranty period, warranty service and support, and the IBM Statement of Limited Warranty.

Warranty Period

Contact your place of purchase for warranty service information. Some IBM Machines are eligible for on-site warranty service depending on the country or region where service is performed or the machine type.

Machine type 2658

Country or region	Warranty period
All	Parts - 1 year, labor - 1 year Battery pack - 1 year

Machine type 2659

Country or region	Warranty period
All	Parts - 3 years, labor - 3 years Battery pack - 1 year

Machine type 2677

Country or region	Warranty period
All	Parts - 3 years, labor - 3 years with onsite support Battery pack - 1 year

Warranty service and support

With the original purchase of an IBM ThinkPad computer, you have access to extensive support. During the IBM Machine warranty period, you may call IBM or your reseller for problem-determination assistance under the terms of the IBM Statement of Limited Warranty.

The following services are available during the warranty period:

- **Problem determination** – Trained personnel are available to assist you with determining if you have a hardware problem and deciding what action is necessary to fix the problem.
- **IBM hardware repair** – If the problem is determined to be caused by IBM hardware under warranty, trained service personnel are available to provide the applicable level of service, either on-site or at an IBM service center as determined by IBM.
- **Engineering Change management** – Occasionally, there might be changes that are required after a product has been shipped from IBM. In those instances, IBM will make Engineering Changes (ECs) available that apply to your hardware.

The following items are not covered under warranty service.

- Replacement or use of non-IBM parts. All IBM parts contain a 7-character identification in the format IBM FRU XXXXXXX.
- Identification of non-IBM software problem sources.
- Installation of customer replaceable units (CRUs).
- Installation and configuration of machine code or licensed internal code that is designated as customer installable.

If you do not register your ThinkPad computer with IBM, you might be required to present proof of purchase to obtain warranty service.

Before you call for service

You can solve many problems without outside assistance by following the troubleshooting procedures that IBM provides in the online help or in the publications that are provided with your ThinkPad computer and software.

Most computers, operating systems, and application programs come with information that contains troubleshooting procedures and explanations of error messages and error codes. The information that comes with your ThinkPad computer also describes the diagnostic tests that you can perform.

If you suspect a software problem, refer to the information for the operating system or application program.

Calling for service

Please have the following information ready:

- Machine type, model, and serial number
- Description of the problem
- Exact wording of any error messages
- Hardware and software configuration information

To find the telephone number for the HelpCenter™ nearest you, see 42 in Chapter 3, "Getting help and service from IBM" on page 39.

IBM Statement of Limited Warranty Z125-4753-06 8/2000

Part 1 - General Terms

This Statement of Limited Warranty includes Part 1 - General Terms and Part 2 - Country-unique Terms. The terms of Part 2 replace or modify those of Part 1. The warranties provided by IBM in this Statement of Limited Warranty apply only to Machines you purchase for your use, and not for resale, from IBM or your reseller. The term "Machine" means an IBM machine, its features, conversions, upgrades, elements, or accessories, or any combination of them. The term "Machine" does not include any software programs, whether pre-loaded with the Machine, installed subsequently or otherwise. Unless IBM specifies otherwise, the following warranties apply only in the country where you acquire the Machine. Nothing in this Statement of Limited Warranty affects any statutory rights of consumers that cannot be waived or limited by contract. If you have any questions, contact IBM or your reseller.

The IBM Warranty for Machines

IBM warrants that each Machine 1) is free from defects in materials and workmanship and 2) conforms to IBM's Official Published Specifications ("Specifications"). The warranty period for a Machine is a specified, fixed period commencing on its Date of Installation. The date on your sales receipt is the Date of Installation unless IBM or your reseller informs you otherwise.

If a Machine does not function as warranted during the warranty period, and IBM or your reseller are unable to either 1) make it do so or 2) replace it with one that is at least functionally equivalent, you may return it to your place of purchase and your money will be refunded.

Extent of Warranty

The warranty does not cover the repair or exchange of a Machine resulting from misuse, accident, modification, unsuitable physical or operating environment, improper maintenance by you, or failure caused by a product for which IBM is not responsible. The warranty is voided by removal or alteration of Machine or parts identification labels.

THESE WARRANTIES ARE YOUR EXCLUSIVE WARRANTIES AND REPLACE ALL OTHER WARRANTIES OR CONDITIONS, EXPRESS OR IMPLIED, INCLUDING, BUT NOT LIMITED TO, THE IMPLIED WARRANTIES OR CONDITIONS OF MERCHANTABILITY AND FITNESS FOR A PARTICULAR PURPOSE. THESE WARRANTIES GIVE YOU SPECIFIC LEGAL RIGHTS AND YOU MAY ALSO HAVE OTHER RIGHTS WHICH VARY FROM JURISDICTION TO JURISDICTION. SOME JURISDICTIONS DO NOT ALLOW THE EXCLUSION OR

LIMITATION OF EXPRESS OR IMPLIED WARRANTIES, SO THE ABOVE EXCLUSION OR LIMITATION MAY NOT APPLY TO YOU. IN THAT EVENT, SUCH WARRANTIES ARE LIMITED IN DURATION TO THE WARRANTY PERIOD. NO WARRANTIES APPLY AFTER THAT PERIOD.

Items Not Covered by Warranty

IBM does not warrant uninterrupted or error-free operation of a Machine.

Any technical or other support provided for a Machine under warranty, such as assistance via telephone with "how-to" questions and those regarding Machine set-up and installation, will be provided **WITHOUT WARRANTIES OF ANY KIND.**

Warranty Service

To obtain warranty service for a Machine, contact IBM or your reseller. If you do not register your Machine with IBM, you may be required to present proof of purchase.

During the warranty period, IBM or your reseller, if approved by IBM to provide warranty service, provides without charge certain types of repair and exchange service to keep Machines in, or restore them to, conformance with their Specifications. IBM or your reseller will inform you of the available types of service for a Machine based on its country of installation. At its discretion, IBM or your reseller will 1) either repair or exchange the failing Machine and 2) provide the service either at your location or a service center. IBM or your reseller will also manage and install selected engineering changes that apply to the Machine.

Some parts of IBM Machines are designated as Customer Replaceable Units (called "CRUs"), e.g., keyboards, memory, or hard disk drives. IBM ships CRUs to you for replacement by you. You must return all defective CRUs to IBM within 30 days of your receipt of the replacement CRU. You are responsible for downloading designated Machine Code and Licensed Internal Code updates from an IBM Internet Web site or from other electronic media, and following the instructions that IBM provides.

When warranty service involves the exchange of a Machine or part, the item IBM or your reseller replaces becomes its property and the replacement becomes yours. You represent that all removed items are genuine and unaltered. The replacement may not be new, but will be in good working order and at least functionally equivalent to the item replaced. The replacement assumes the warranty service status of the replaced item. Many features, conversions, or upgrades involve the removal of parts and their return to IBM. A part that replaces a removed part will assume the warranty service status of the removed part.

Before IBM or your reseller exchanges a Machine or part, you agree to remove all features, parts, options, alterations, and attachments not under warranty service.

You also agree to

1. ensure that the Machine is free of any legal obligations or restrictions that prevent its exchange;
2. obtain authorization from the owner to have IBM or your reseller service a Machine that you do not own; and
3. where applicable, before service is provided:
 - a. follow the problem determination, problem analysis, and service request procedures that IBM or your reseller provides;
 - b. secure all programs, data, and funds contained in a Machine;
 - c. provide IBM or your reseller with sufficient, free, and safe access to your facilities to permit them to fulfill their obligations; and
 - d. inform IBM or your reseller of changes in a Machine's location.

IBM is responsible for loss of, or damage to, your Machine while it is 1) in IBM's possession or 2) in transit in those cases where IBM is responsible for the transportation charges.

Neither IBM nor your reseller is responsible for any of your confidential, proprietary or personal information contained in a Machine which you return to IBM or your reseller for any reason. You should remove all such information from the Machine prior to its return.

Limitation of Liability

Circumstances may arise where, because of a default on IBM's part or other liability, you are entitled to recover damages from IBM. In each such instance, regardless of the basis on which you are entitled to claim damages from IBM (including fundamental breach, negligence, misrepresentation, or other contract or tort claim), except for any liability that cannot be waived or limited by applicable laws, IBM is liable for no more than

1. damages for bodily injury (including death) and damage to real property and tangible personal property; and
2. the amount of any other actual direct damages, up to the charges (if recurring, 12 months' charges apply) for the Machine that is subject of the claim. For purposes of this item, the term "Machine" includes Machine Code and Licensed Internal Code.

This limit also applies to IBM's suppliers and your reseller. It is the maximum for which IBM, its suppliers, and your reseller are collectively responsible.

UNDER NO CIRCUMSTANCES IS IBM LIABLE FOR ANY OF THE FOLLOWING: 1) THIRD-PARTY CLAIMS AGAINST YOU FOR DAMAGES (OTHER THAN THOSE UNDER THE FIRST ITEM LISTED ABOVE); 2) LOSS OF, OR DAMAGE TO, YOUR RECORDS OR DATA; OR 3) SPECIAL, INCIDENTAL, OR INDIRECT DAMAGES OR FOR ANY ECONOMIC CONSEQUENTIAL DAMAGES, LOST PROFITS OR LOST SAVINGS, EVEN IF IBM, ITS SUPPLIERS OR YOUR RESELLER IS INFORMED OF THEIR POSSIBILITY. SOME JURISDICTIONS DO NOT ALLOW THE EXCLUSION OR LIMITATION OF INCIDENTAL OR CONSEQUENTIAL DAMAGES, SO THE ABOVE LIMITATION OR EXCLUSION MAY NOT APPLY TO YOU.

Governing Law

Both you and IBM consent to the application of the laws of the country in which you acquired the Machine to govern, interpret, and enforce all of your and IBM's rights, duties, and obligations arising from, or relating in any manner to, the subject matter of this Agreement, without regard to conflict of law principles.

Part 2 - Country-unique Terms

AMERICAS

BRAZIL

Governing Law: *The following is added after the first sentence:*

Any litigation arising from this Agreement will be settled exclusively by the court of Rio de Janeiro.

NORTH AMERICA

Warranty Service: *The following is added to this Section:*

To obtain warranty service from IBM in Canada or the United States, call 1-800-IBM-SERV (426-7378).

CANADA

Governing Law: *The following replaces "laws of the country in which you acquired the Machine" in the first sentence:*

laws in the Province of Ontario.

UNITED STATES

Governing Law: *The following replaces "laws of the country in which you acquired the Machine" in the first sentence:*

laws of the State of New York.

ASIA PACIFIC

AUSTRALIA

The IBM Warranty for Machines: *The following paragraph is added to this Section:*

The warranties specified in this Section are in addition to any rights you may have under the Trade Practices Act 1974 or other similar legislation and are only limited to the extent permitted by the applicable legislation.

Limitation of Liability: *The following is added to this Section:*

Where IBM is in breach of a condition or warranty implied by the Trade Practices Act 1974 or other similar legislation, IBM's liability is limited to the repair or replacement of the goods or the supply of equivalent goods. Where that condition or warranty relates to right to sell, quiet possession or clear title, or the goods are of a kind ordinarily acquired for personal, domestic or household use or consumption, then none of the limitations in this paragraph apply.

Governing Law: *The following replaces "laws of the country in which you acquired the Machine" in the first sentence:*
laws of the State or Territory.

CAMBODIA, LAOS, AND VIETNAM

Governing Law: *The following replaces "laws of the country in which you acquired the Machine" in the first sentence:*
laws of the State of New York.

The following is added to this Section:

Disputes and differences arising out of or in connection with this Agreement shall be finally settled by arbitration which shall be held in Singapore in accordance with the rules of the International Chamber of Commerce (ICC). The arbitrator or arbitrators designated in conformity with those rules shall have the power to rule on their own competence and on the validity of the Agreement to submit to arbitration. The arbitration award shall be final and binding for the parties without appeal and the arbitral award shall be in writing and set forth the findings of fact and the conclusions of law.

All proceedings shall be conducted, including all documents presented in such proceedings, in the English language. The number of arbitrators shall be three, with each side to the dispute being entitled to appoint one arbitrator.

The two arbitrators appointed by the parties shall appoint a third arbitrator before proceeding upon the reference. The third arbitrator shall act as

chairman of the proceedings. Vacancies in the post of chairman shall be filled by the president of the ICC. Other vacancies shall be filled by the respective nominating party. Proceedings shall continue from the stage they were at when the vacancy occurred.

If one of the parties refuses or otherwise fails to appoint an arbitrator within 30 days of the date the other party appoints its, the first appointed arbitrator shall be the sole arbitrator, provided that the arbitrator was validly and properly appointed.

The English language version of this Agreement prevails over any other language version.

HONG KONG AND MACAU

Governing Law: *The following replaces "laws of the country in which you acquired the Machine" in the first sentence:*

laws of Hong Kong Special Administrative Region.

INDIA

Limitation of Liability: *The following replaces items 1 and 2 of this Section:*

1. liability for bodily injury (including death) or damage to real property and tangible personal property will be limited to that caused by IBM's negligence;
2. as to any other actual damage arising in any situation involving nonperformance by IBM pursuant to, or in any way related to the subject of this Statement of Limited Warranty, IBM's liability will be limited to the charge paid by you for the individual Machine that is the subject of the claim.

JAPAN

Governing Law: *The following sentence is added to this Section:*

Any doubts concerning this Agreement will be initially resolved between us in good faith and in accordance with the principle of mutual trust.

NEW ZEALAND

The IBM Warranty for Machines: *The following paragraph is added to this Section:*

The warranties specified in this Section are in addition to any rights you may have under the Consumer Guarantees Act 1993 or other legislation which cannot be excluded or limited. The Consumer Guarantees Act 1993 will not

apply in respect of any goods which IBM provides, if you require the goods for the purposes of a business as defined in that Act.

Limitation of Liability: *The following is added to this Section:*

Where Machines are not acquired for the purposes of a business as defined in the Consumer Guarantees Act 1993, the limitations in this Section are subject to the limitations in that Act.

PEOPLE'S REPUBLIC OF CHINA (PRC)

Governing Law: *The following replaces this Section:*

Both you and IBM consent to the application of the laws of the State of New York (except when local law requires otherwise) to govern, interpret, and enforce all your and IBM's rights, duties, and obligations arising from, or relating in any manner to, the subject matter of this Agreement, without regard to conflict of law principles.

Any disputes arising from or in connection with this Agreement will first be resolved by friendly negotiations, failing which either of us has the right to submit the dispute to the China International Economic and Trade Arbitration Commission in Beijing, the PRC, for arbitration in accordance with its arbitration rules in force at the time. The arbitration tribunal will consist of three arbitrators. The language to be used therein will be English and Chinese. An arbitral award will be final and binding on all the parties, and will be enforceable under the Convention on the Recognition and Enforcement of Foreign Arbitral Awards (1958).

The arbitration fee will be borne by the losing party unless otherwise determined by the arbitral award.

During the course of arbitration, this Agreement will continue to be performed except for the part which the parties are disputing and which is undergoing arbitration.

EUROPE, MIDDLE EAST, AFRICA (EMEA)

THE FOLLOWING TERMS APPLY TO ALL EMEA COUNTRIES:

The terms of this Statement of Limited Warranty apply to Machines purchased from IBM or an IBM reseller.

Warranty Service:

If you purchase an IBM Machine in Austria, Belgium, Denmark, Estonia, Finland, France, Germany, Greece, Iceland, Ireland, Italy, Latvia, Lithuania, Luxembourg, Netherlands, Norway, Portugal, Spain, Sweden, Switzerland or

United Kingdom, you may obtain warranty service for that Machine in any of those countries from either (1) an IBM reseller approved to perform warranty service or (2) from IBM. If you purchase an IBM Personal Computer Machine in Albania, Armenia, Belarus, Bosnia and Herzegovina, Bulgaria, Croatia, Czech Republic, Georgia, Hungary, Kazakhstan, Kirghizia, Federal Republic of Yugoslavia, Former Yugoslav Republic of Macedonia (FYROM), Moldova, Poland, Romania, Russia, Slovak Republic, Slovenia, or Ukraine, you may obtain warranty service for that Machine in any of those countries from either (1) an IBM reseller approved to perform warranty service or (2) from IBM.

If you purchase an IBM Machine in a Middle Eastern or African country, you may obtain warranty service for that Machine from the IBM entity within the country of purchase, if that IBM entity provides warranty service in that country, or from an IBM reseller, approved by IBM to perform warranty service on that Machine in that country. Warranty service in Africa is available within 50 kilometers of an IBM authorized service provider. You are responsible for transportation costs for Machines located outside 50 kilometers of an IBM authorized service provider.

Governing Law:

The applicable laws that govern, interpret and enforce rights, duties, and obligations of each of us arising from, or relating in any manner to, the subject matter of this Statement, without regard to conflict of laws principles, as well as Country-unique terms and competent court for this Statement are those of the country in which the warranty service is being provided, except that in 1) Albania, Bosnia-Herzegovina, Bulgaria, Croatia, Hungary, Former Yugoslav Republic of Macedonia, Romania, Slovakia, Slovenia, Armenia, Azerbaijan, Belarus, Georgia, Kazakhstan, Kyrgyzstan, Moldova, Russia, Tajikistan, Turkmenistan, Ukraine, and Uzbekistan, the laws of Austria apply; 2) Estonia, Latvia, and Lithuania, the laws of Finland apply; 3) Algeria, Benin, Burkina Faso, Cameroon, Cape Verde, Central African Republic, Chad, Congo, Djibouti, Democratic Republic of Congo, Equatorial Guinea, France, Gabon, Gambia, Guinea, Guinea-Bissau, Ivory Coast, Lebanon, Mali, Mauritania, Morocco, Niger, Senegal, Togo, and Tunisia, this Agreement will be construed and the legal relations between the parties will be determined in accordance with the French laws and all disputes arising out of this Agreement or related to its violation or execution, including summary proceedings, will be settled exclusively by the Commercial Court of Paris; 4) Angola, Bahrain, Botswana, Burundi, Egypt, Eritrea, Ethiopia, Ghana, Jordan, Kenya, Kuwait, Liberia, Malawi, Malta, Mozambique, Nigeria, Oman, Pakistan, Qatar, Rwanda, Sao Tome, Saudi Arabia, Sierra Leone, Somalia, Tanzania, Uganda, United Arab Emirates, United Kingdom, West Bank/Gaza, Yemen, Zambia, and Zimbabwe, this Agreement will be governed by English Law and disputes relating to it will be submitted to the exclusive jurisdiction of the English courts; and 5) in Greece, Israel, Italy, Portugal, and Spain any legal claim arising out of this

Statement will be brought before, and finally settled by, the competent court of Athens, Tel Aviv, Milan, Lisbon, and Madrid, respectively.

THE FOLLOWING TERMS APPLY TO THE COUNTRY SPECIFIED:

AUSTRIA AND GERMANY

The IBM Warranty for Machines: *The following replaces the first sentence of the first paragraph of this Section:*

The warranty for an IBM Machine covers the functionality of the Machine for its normal use and the Machine's conformity to its Specifications.

The following paragraphs are added to this Section:

The minimum warranty period for Machines is six months. In case IBM or your reseller is unable to repair an IBM Machine, you can alternatively ask for a partial refund as far as justified by the reduced value of the unrepaired Machine or ask for a cancellation of the respective agreement for such Machine and get your money refunded.

Extent of Warranty: *The second paragraph does not apply.*

Warranty Service: *The following is added to this Section:*

During the warranty period, transportation for delivery of the failing Machine to IBM will be at IBM's expense.

Limitation of Liability: *The following paragraph is added to this Section:*

The limitations and exclusions specified in the Statement of Limited Warranty will not apply to damages caused by IBM with fraud or gross negligence and for express warranty.

The following sentence is added to the end of item 2:

IBM's liability under this item is limited to the violation of essential contractual terms in cases of ordinary negligence.

EGYPT

Limitation of Liability: *The following replaces item 2 in this Section:*

as to any other actual direct damages, IBM's liability will be limited to the total amount you paid for the Machine that is the subject of the claim. For purposes of this item, the term "Machine" includes Machine Code and Licensed Internal Code.

Applicability of suppliers and resellers (unchanged).

FRANCE

Limitation of Liability: *The following replaces the second sentence of the first paragraph of this Section:*

In such instances, regardless of the basis on which you are entitled to claim damages from IBM, IBM is liable for no more than: *(items 1 and 2 unchanged)*.

IRELAND

Extent of Warranty: *The following is added to this Section:*

Except as expressly provided in these terms and conditions, all statutory conditions, including all warranties implied, but without prejudice to the generality of the foregoing all warranties implied by the Sale of Goods Act 1893 or the Sale of Goods and Supply of Services Act 1980 are hereby excluded.

Limitation of Liability: *The following replaces items one and two of the first paragraph of this Section:*

1. death or personal injury or physical damage to your real property solely caused by IBM's negligence; and
2. the amount of any other actual direct damages, up to 125 percent of the charges (if recurring, the 12 months' charges apply) for the Machine that is the subject of the claim or which otherwise gives rise to the claim.

Applicability of suppliers and resellers (unchanged).

The following paragraph is added at the end of this Section:

IBM's entire liability and your sole remedy, whether in contract or in tort, in respect of any default shall be limited to damages.

ITALY

Limitation of Liability: *The following replaces the second sentence in the first paragraph:*

In each such instance unless otherwise provided by mandatory law, IBM is liable for no more than:

1. *(unchanged)*
2. as to any other actual damage arising in all situations involving nonperformance by IBM pursuant to, or in any way related to the subject matter of this Statement of Warranty, IBM's liability, will be limited to the total amount you paid for the Machine that is the subject of the claim.

Applicability of suppliers and resellers (unchanged).

The following replaces the third paragraph of this Section:

Unless otherwise provided by mandatory law, IBM and your reseller are not liable for any of the following: *(items 1 and 2 unchanged)* 3) indirect damages, even if IBM or your reseller is informed of their possibility.

SOUTH AFRICA, NAMIBIA, BOTSWANA, LESOTHO AND SWAZILAND

Limitation of Liability: *The following is added to this Section:*

IBM's entire liability to you for actual damages arising in all situations involving nonperformance by IBM in respect of the subject matter of this Statement of Warranty will be limited to the charge paid by you for the individual Machine that is the subject of your claim from IBM.

UNITED KINGDOM

Limitation of Liability: *The following replaces items 1 and 2 of the first paragraph of this Section:*

1. death or personal injury or physical damage to your real property solely caused by IBM's negligence;
2. the amount of any other actual direct damages or loss, up to 125 percent of the charges (if recurring, the 12 months' charges apply) for the Machine that is the subject of the claim or which otherwise gives rise to the claim;

The following item is added to this paragraph:

3. breach of IBM's obligations implied by Section 12 of the Sale of Goods Act 1979 or Section 2 of the Supply of Goods and Services Act 1982.

Applicability of suppliers and resellers (unchanged).

The following is added to the end of this Section:

IBM's entire liability and your sole remedy, whether in contract or in tort, in respect of any default shall be limited to damages.

Appendix E. Notices

This publication was developed for products and services offered in the U.S.A.

IBM may not offer the products, services, or features discussed in this document in other countries. Consult your local IBM representative for information on the products and services currently available in your area. Any reference to an IBM product, program, or service is not intended to state or imply that only that IBM product, program, or service may be used. Any functionally equivalent product, program, or service that does not infringe any IBM intellectual property right may be used instead. However, it is the user's responsibility to evaluate and verify the operation of any non-IBM product, program, or service.

IBM may have patents or pending patent applications covering subject matter described in this document. The furnishing of this document does not give you any license to these patents. You can send license inquiries, in writing, to:

*IBM Director of Licensing
IBM Corporation
North Castle Drive
Armonk, NY 10504-1785
U.S.A.*

Processing date data

This IBM hardware product and IBM software products that might be packaged with it have been designed, when used in accordance with their associated documentation, to process date data correctly within and between the 20th and 21st centuries, provided all other products (for example, software, hardware, and firmware) used with these products properly exchange accurate date data with them.

IBM cannot take responsibility for the date data processing capabilities of non-IBM products, even if those products are preinstalled or otherwise distributed by IBM. You should contact the vendors responsible for those products directly to determine the capabilities of their products and update them if needed. This IBM hardware product cannot prevent errors that might occur if software, upgrades, or peripheral devices you use or exchange data with do not process date data correctly.

The foregoing is a Year 2000 Readiness Disclosure.

References to the Web site addresses

Any references in this publication to non-IBM Web sites are provided for convenience only and do not in any manner serve as an endorsement of those Web sites. The materials at those Web sites are not part of the materials for this IBM product, and use of those Web sites is at your own risk.

Electronic emission notices

Federal Communications Commission (FCC) Statement

ThinkPad R32, machine types 2658, 2659, and 2677

This equipment has been tested and found to comply with the limits for a Class B digital device, pursuant to Part 15 of the FCC Rules. These limits are designed to provide reasonable protection against harmful interference in a residential installation. This equipment generates, uses, and can radiate radio frequency energy and, if not installed and used in accordance with the instructions, may cause harmful interference to radio communications. However, there is no guarantee that interference will not occur in a particular installation. If this equipment does cause harmful interference to radio or television reception, which can be determined by turning the equipment off and on, the user is encouraged to try to correct the interference by one or more of the following measures:

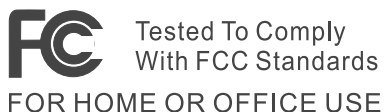
- Reorient or relocate the receiving antenna.
- Increase the separation between the equipment and receiver.
- Connect the equipment into an outlet on a circuit different from that to which the receiver is connected.
- Consult an IBM authorized dealer or service representative for help.

Properly shielded and grounded cables and connectors must be used in order to meet FCC emission limits. Proper cables and connectors are available from IBM authorized dealers. IBM is not responsible for any radio or television interference caused by unauthorized changes or modifications to this equipment. Unauthorized changes or modifications could void the user's authority to operate the equipment.

This device complies with Part 15 of the FCC Rules. Operation is subject to the following two conditions: (1) this device may not cause harmful interference, and (2) this device must accept any interference received, including interference that may cause undesired operation.

Responsible Party:

International Business Machines Corporation
New Orchard Road
Armonk, NY 10504
Telephone 1-919-543-2193



Industry Canada Class B Emission Compliance Statement

This Class B digital apparatus complies with Canadian ICES-003.

Avis de conformité à la réglementation d'Industrie Canada

Cet appareil numérique de la classe B est conforme à la norme NMB-003 du Canada.

European Community Directive Conformance Statement

This product is in conformity with the protection requirements of EU Council Directive 89/336/EEC on the approximation of the laws of the Member States relating to electro-magnetic compatibility. IBM cannot accept responsibility for any failure to satisfy the protection requirements resulting from a non-recommended modification of the product, including the fitting of non-IBM option cards.

A declaration of Conformity with the requirements of the Directive has been signed by IBM United Kingdom Limited, PO BOX 30 Spango Valley Greenock Scotland PA160AH.

This product satisfies the Class B limits of EN 55022.

Telecommunication notices

Federal Communications Commission (FCC) and Telephone Company Requirements (Part 68 of the FCC Rules)

1. The Telephone Consumer Protection Act of 1991 makes it unlawful for any person to use a computer or other electronic device to send any message via a telephone fax machine unless such message clearly contains in a margin at the top or bottom of each transmitted page or on the first page of the transmission, the date and time it is sent, and an identification of the business or other entity, or other individual sending the message and the telephone number of the sending machine or such business, other entity, or individual.

In order to program this information into your computer, you should be sure to follow the installation instructions for your fax software package.

2. The built-in modem is built into the ThinkPad computer. It complies with Part 68 of the FCC Rules. A label is affixed to the bottom of the computer that contains, among other things, the FCC registration number, USOC, and Ringer Equivalency Number (REN) for this equipment. If these numbers are requested, look at the label and provide this information to your telephone company.
3. The REN is useful to determine the quantity of devices you may connect to your telephone line and still have those devices ring when your number is called. In most, but not all, areas, the sum of the RENs of all devices should not exceed five (5.0). To be certain of the number of devices you may connect to your line, as determined by the REN (REN:0.7), you should call your local telephone company to determine the maximum REN for your calling area.
4. If the built-in modem causes harm to the telephone network, the telephone company may discontinue your service temporarily. If possible, they will notify you in advance. But, if advance notice isn't practical, you will be notified as soon as possible. You will be advised of your right to file a complaint with the FCC.
5. Your telephone company may make changes in its facilities, equipment, operations, or procedures that could affect the proper operation of your equipment. If they do, you will be given advance notice so as to give you an opportunity to maintain uninterrupted service.
6. If you experience trouble with this built-in modem, contact your IBM Authorized Seller, or the IBM Corporation, 500 Columbus Avenue, Thornwood, NY 10594, 1-800-772-2227, for repair/warranty information. The telephone company may ask you to disconnect this equipment from the network until the problem has been corrected, or until you are sure the equipment is not malfunctioning.
7. No customer repairs are possible to the modem. If you experience trouble with this equipment, contact your Authorized Seller or the IBM Corporation for information.
8. The modem may not be used on coin service provided by the telephone company. Connection to party lines is subject to state tariffs. Contact your state public utility commission or corporation commission for information.
9. When ordering network interface (NI) service from the Local Exchange Carrier, specify service arrangement USOC RJ11C.

Fax Branding

The Telephone Consumer Protection Act of 1991 makes it unlawful for any person to use a computer or other electronic device, including fax machines, to send any message unless such message clearly contains in a margin at the top of or bottom of each transmitted page or on the first page of the transmission, the date and time it is sent and an identification of the business or other entity, or other individual sending the message and the telephone

number of the sending machine or such business, other entity, or individual. (The telephone number provided may not be a 900 number or any other number for which charges exceed local or long-distance transmission charges.)

Industry Canada requirements

Notice

The Industry Canada label identifies certified equipment. This certification means that the equipment meets certain telecommunications networks protective, operational, and safety requirements. The Department does not guarantee the equipment will operate to the user's satisfaction.

Before installing this equipment, users should ensure that it is permissible to be connected to the facilities of the local telecommunications company. The equipment must also be installed using an acceptable method of communication. In some cases, the company's inside wiring associated with a single line individual service may be extended by means of a certified connector assembly (telephone extension cord). The customer should be aware that compliance with the above conditions may not prevent degradation of service in some situations.

Repairs to certified equipment should be made by an authorized Canadian maintenance facility designated by the supplier. Any repairs or alterations made by the user to this equipment, or equipment malfunctions, may give the telecommunications company cause to request the user to disconnect the equipment.

Users should ensure for their own protection that the electrical ground connections of the power utility, telephone lines and internal metallic water pipe system, if present, are connected together. This precaution may be particularly important in rural areas.

Caution

Users should not attempt to make such connections themselves, but should contact the appropriate electric inspection authority, or electrician, as appropriate.

The **Ringer Equivalent Number** (REN:0.3) assigned to each terminal device provides an indication of the maximum number of terminals allowed to be connected to a telephone interface. The termination on an interface may consist of any combination of devices subject only to the requirement that the sum of the Ringer Equivalence Number of all the devices does not exceed 5.

Avis

L'étiquette du ministère de l'Industrie Canada identifie le matériel homologué. Cette étiquette certifie que le matériel est conforme à certaines normes de

protection, d'exploitation et de sécurité des réseaux de télécommunications. Le Ministère n'assure toutefois pas que le matériel fonctionnera à la satisfaction de l'utilisateur.

Avant d'installer ce matériel, l'utilisateur doit s'assurer qu'il est permis de le raccorder aux installations de l'entreprise locale de télécommunication. Le matériel doit également être installé en suivant une méthode acceptée de raccordement. Dans certains cas, les fils intérieurs de l'entreprise utilisés pour un service individuel à ligne unique peuvent être prolongés au moyen d'un dispositif homologué de raccordement (cordon prolongateur téléphonique interne). L'abonné ne doit pas oublier qu'il est possible que la conformité aux conditions énoncées ci-dessus n'empêchent pas la dégradation du service dans certaines situations. Actuellement, les entreprises de télécommunication ne permettent pas que l'on raccorde leur matériel à des jacks d'abonné, sauf dans les cas précis prévus par les tarifs particuliers de ces entreprises.

Les réparations de matériel homologué doivent être effectuées par un centre d'entretien canadien autorisé désigné par le fournisseur. La compagnie de télécommunications peut demander à l'utilisateur de débrancher un appareil à la suite de réparations ou de modifications effectuées par l'utilisateur ou à cause de mauvais fonctionnement.

Pour sa propre protection, l'utilisateur doit s'assurer que tous les fils de mise à la terre de la source d'énergie électrique, des lignes téléphoniques et des canalisations d'eau métalliques, s'il y en a, sont raccordés ensemble. Cette précaution est particulièrement importante dans les régions rurales.

Avertissement

L'utilisateur ne doit pas tenter de faire ces raccordements lui-même; il doit avoir recours à un service d'inspection des installations électriques, ou à un électricien, selon le cas.

L'indice de charge (IC) assigné à chaque dispositif terminal indique (REN:0.3), pour éviter toute surcharge, le pourcentage de la charge totale qui peut être raccordée à un circuit téléphonique bouclé utilisé par ce dispositif. La terminaison du circuit bouclé peut être constituée de n'importe quelle combinaison de dispositifs, pourvu que la somme des indices de charge de l'ensemble des dispositifs ne dépasse pas 5.

Notice for Australia

The following notice applies when using the telephony functions:

WARNING: FOR SAFETY REASONS, ONLY CONNECT EQUIPMENT WITH A TELECOMMUNICATIONS COMPLIANCE LABEL. THIS INCLUDES CUSTOMER EQUIPMENT PREVIOUSLY LABELLED PERMITTED OR CERTIFIED.
--

Notice for New Zealand

For the modem with approval number PTC 211/01/081

- The grant of a Telepermit for any item of terminal equipment indicates only that Telecom has accepted that the item complies with minimum conditions for connection to its network. It indicates no endorsement of the product by Telecom, nor does it provide any sort of warranty. Above all, it provides no assurance that any item will work correctly in all respects with another item of Telepermitted equipment of a different make or model, nor does it imply that any product is compatible with all of Telecom's network services.
- Functional tests

This equipment is not capable, under all operating conditions, of correct operation at the higher speeds for which it is designed. Telecom will accept no responsibility should difficulties arise in such circumstances.
- Fail safe requirements

Under power failure conditions this appliance may not operate. Please ensure that a separate telephone, not dependent on local power, is available.
- Automatic re-attempts to the same number

Some parameters required for compliance with Telecom's Telepermit requirements are dependent on the equipment (PC) associated with this device. The associated equipment shall be set to operate within the following limits for compliance with Telecom's Specifications:

 - There shall be no more than 10 call attempts to the same number within any 30 minute period for any single manual call initiation, and,
 - The equipment shall go on-hook for a period of not less than 30 seconds between the end of one attempt and the beginning of the next attempt.
- For automatic calls to different numbers

Some parameters required for compliance with Telecom's Telepermit requirements are dependent on the equipment (PC) associated with this device. In order to operate within the limits for compliance with Telecom's specifications, the associated equipment shall be set to ensure that automatic calls to different numbers are spaced such that there is not less than 5 seconds between the end of one call attempt and the beginning of another.
- For automatic call set-up

This equipment shall not be set up to make automatic calls to Telecom's 111 Emergency Service.
- Call answering

Some parameters required for compliance with Telecom's Telepermit requirements are dependent on the equipment (PC) associated with this device. In order to operate within the limits of compliance with Telecom's

specifications, the associated equipment shall be set to ensure that calls are answered between 3 and 30 seconds of receipt of ringing.

- For correct operation, the total of the RN's of all devices connected to a single line at any time should not exceed 5.

For the modem with approval number PTC 211/01/050

The grant of a Telepermit for any item of terminal equipment indicates only that Telecom has accepted that the item complies with minimum conditions for connection to its network. It indicates no endorsement of the product by Telecom, nor does it provide any sort of warranty. Above all, it provides no assurance that any item will work correctly in all respects with another item of Telepermitted equipment of a different make or model, nor does it imply that any product is compatible with all of Telecom's network services.

This equipment is not capable, under all operating conditions, of correct operation at the higher speeds for which it is designed. Telecom will accept no responsibility should difficulties arise in such circumstances.

If a charge for local calls is unacceptable, the 'Dial' button should not be used for local calls. Only the seven digits of your local number should be dialled from your modem. Do not dial the area code digit or '0' prefix.

This equipment should not be used under any circumstances that may constitute a nuisance to other Telecom customers.

Some parameters required for compliance with Telecom's Telepermit requirements are dependent on the equipment (PC) associated with this device. The associated equipment shall be set to operate within the following limits for compliance with Telecom's specifications:

- Automatic re-attempts to the same number

There shall be no more than 10 call attempts to the same number within any 30 minute period for any single manual call initiation, and The equipment shall go on-hook for a period of not less than 30 seconds between the end of one attempt and the beginning of the next call attempt.

- Automatic calls to different numbers

Automatic calls to different numbers shall be spaced such that there is no less than 5 seconds between the end of one call attempt and the beginning of another.

- Call answering

The associated equipment shall be set to ensure that calls are answered between 3 and 30 seconds of receipt of ringing.

Notice for European Union countries

Hereby Ambit declares that this "J07M058" modem is in conformity with the essential requirements and other relevant provisions of Directive 1999/5/EC.



AMBIT Microsystems Corporation

Headquarters: 5F-1, 5 Hsin-An Road, Hsinchu
Science-Based Industrial Park Taiwan,
TEL: +886 3 5784975
FAX: +886 3 5775100

Taipei Branch: 4-1, Ming-Shen Street, Tu Chen 236
Tu Chen Industrial District, Taiwan, R.O.C.
TEL: +886-2-2267 6511
FAX: +886-2-2267 6512

Declaration of Conformity

We,

AMBIT MICROSYSTEMS CORPORATION.
5F-1, 5 Hsin-An Road, Hsinchu Science-Based
Industrial Park, Taiwan, R.O.C
Contact Person: Mr. Allen Lai
Tel: 886-3-5784975 Fax: 886-3-5799178, 5775100
E-mail: allen.lai@ambit.com.tw

Herewith declare that the product:

Equipment : 56K Internal Modem Module
Model : J07M058

Is in conformity with the provisions of the following EC directive(s)
meets the requirements of the council of the European communities relating to and.

Reference NO. Title

1999/5/EC	Radio & Telecommunications Terminal Equipment Directive (R&TTE)
73/23/EEC	Low Voltage Directive (LVD)
89/336/EEC	Electromagnetic Compatibility (EMC-Directive)

and that standards and/or technical specifications referenced above have been applied.

A handwritten signature in black ink, appearing to read "Allen Lai", written over a horizontal line.

Allen Lai
R&D Supervisor
Ambit Microsystems Corporation
Date: July, 31, 2001

Product notice requirements

The following notice applies to machines equipped with both a DVD and a TV-out function:

This product incorporates copyright protection technology that is protected by method claims of certain U.S. patents and other intellectual property rights owned by Macrovision Corporation and other rights owners. Use of this copyright protection technology must be authorized by Macrovision Corporation and is intended for home and other limited viewing use only, unless otherwise authorized by Macrovision Corporation. Reverse engineering or disassembly is prohibited.

Trademarks

The following terms are trademarks of the IBM Corporation in the United States or other countries or both:

IBM	PS/2
Alert on LAN	ThinkPad
HelpCenter	TrackPoint

Microsoft, and Windows are trademarks of Microsoft Corporation in the United States and/or other countries.

Intel and Pentium are trademarks of Intel Corporation in the United States and/or other countries. (For a complete list of Intel trademarks, see www.intel.com/tradmarx.htm)

Other company, product, or service names may be the trademarks or service marks of others.

Index

A

Access Help v
Access ThinkPad v

B

battery
 problems 25
 replacing 37
BIOS Setup 30

C

carrying the computer 6
CD-ROM
 problems 26
CD-RW
 problems 26
CD-RW/DVD
 problems 26
cleaning the computer 8
computer display problems 23
configuration
 setup 30

D

data backup 34
DVD-ROM
 problems 26

E

electronic help v
error codes 11
error messages 11
errors without codes 15
errors without messages 15

F

fax, help by 41

H

hard disk
 problems 26
 replacing 35
hibernation problems 21

I

IBM help v
infrared port problems 20

K

keyboard problems 17

O

on-board help v

P

password problem 17
PC-Doctor for Windows 10
power switch problem 17
problems, troubleshooting 11

R

recovering software 31

S

safety instruction 45
snapshots of system files 33
software
 problems 28
standby problems 21
storage device, replacing 35

T

telephone, help by 41
testing with PC-Doctor 10
TrackPoint problems 19

W

Web, help by 40



Part Number: 62P8679

(1P) P/N: 62P8679

