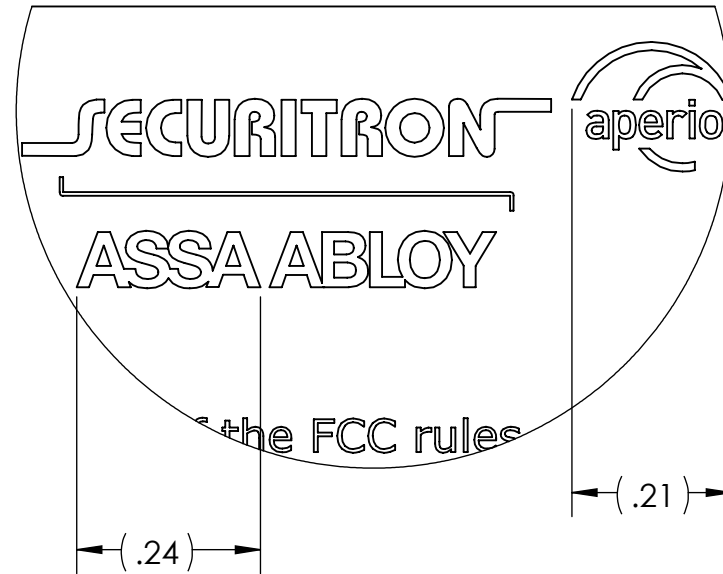
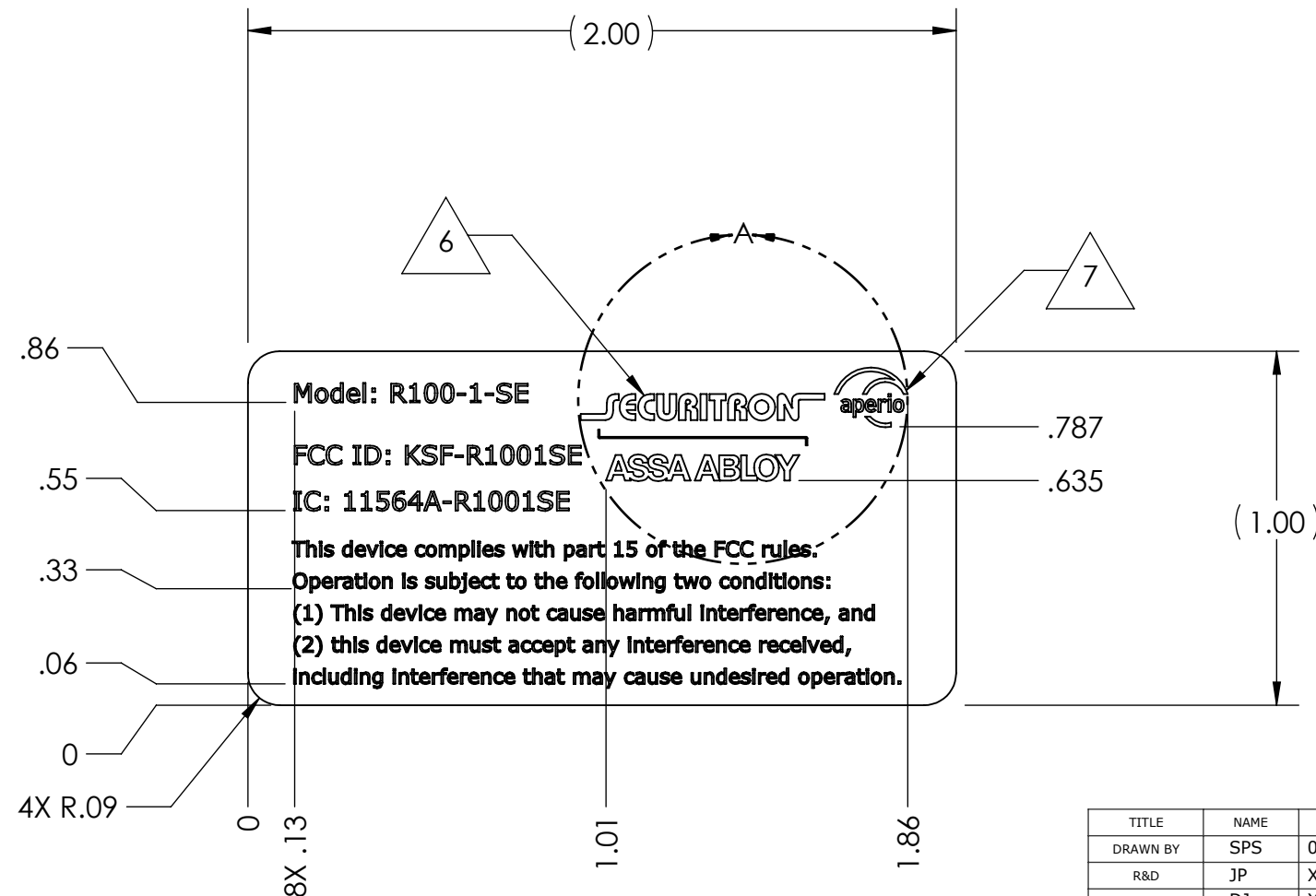


NOTES: UNLESS OTHERWISE SPECIFIED.

1. COMPONENTS AND OR PARTS TO COMPLY WITH EU DIRECTIVE 2002/95/EC (RoHS).
2. MATERIAL: COATED PAPER WITH PERMANENT LATEX ADHESIVE.  
USE LABEL P/N: 3000021.006 OR HES APPROVED EQUIVALENT.
3. WHITE LABEL WITH BLACK LETTERING.
4. FINISH: PRINTED IN DENSE BLACK INK. TEXT SHALL BE SHARP AND LEGIBLE.
5. FONT: ARIAL  
FONT HEIGHT: 4 POINT MINIMUM  
ALIGNMENT: LEFT JUSTIFIED
6. SECURITRON LOGO DEFINED BY DRAWING 49-00052.
7. APERIO LOGO DEFINED BY DRAWING 4000505.002.
8. PARTS SHALL BE CLEAN AND FREE OF FOREIGN MATERIAL.
9. PARTS SHALL BE PACKAGED TO PREVENT DAMAGE RESULTING FROM SHIPPING, STORAGE, AND HANDLING.



DETAIL A  
SCALE 4 : 1  
SIZE RELATIONSHIP SHALL  
BE MAINTAINED



THIS DOCUMENT IS THE CONFIDENTIAL PROPERTY OF HES, INC. AND IS LOANED SUBJECT TO RETURN UPON DEMAND. TITLE TO THIS DOCUMENT IS NEVER TO BE SOLD OR TRANSFERRED FOR ANY REASON. THIS DOCUMENT IS TO BE USED ONLY PURSUANT TO WRITTEN LICENSE OR WRITTEN INSTRUCTIONS OF HES, INC. ALL RIGHTS TO DESIGN AND INVENTIONS ARE RESERVED BY HES, INC. POSSESSION OF THE DOCUMENT IS ACCEPTED SUBJECT TO THE FOREGOING. © HES, INC. 2013

UNLESS OTHERWISE SPECIFIED  
DIMENSIONS ARE IN INCHES  
TOLERANCES ARE:  
FRACTIONAL  $\pm 1/32$   
ANGLES  $\pm 1^\circ$   
.XX  $\pm .01$   
.XXX  $\pm .005$

DO NOT SCALE DRAWING  
INTERPRET PER ASME Y14.5M-2009

TITLE	NAME	DATE
DRAWN BY	SPS	09/25/13
R&D	JP	X
MFG ENGR	DJ	X
QA	RC	X



3RD ANGLE  
PROJECTION

STATUS:  
**UNRELEASED**



**HANCHETT ENTRY SYSTEMS, INC.**

10027 S. 51st Street, Suite 102 - Phoenix AZ 85044  
P (623)582-4626 - F (623)582-4641  
ASSAABLOY, the global leader in door opening solutions

LABEL: FCC, APERIO, R100, HF

SIZE	<b>B</b>
------	----------

E	DWG. NO.
---	----------

5080021.007

REV.  
K01

SCALE: 2:1

PRINT DATE:  
11/21/2013


LAST SAVED BY:  
ssullivan

SHEET 1 OF 1

Model: R100-1-SE  
FCC ID: KSF-R1001SE  
IC: 11564A-R1001SE

This device complies with part 15 of the FCC rules.  
Operation is subject to the following two conditions:  
(1) This device may not cause harmful interference, and  
(2) this device must accept any interference received,  
including interference that may cause undesired operation.

**SECURITRON**  
**ASSA ABLLOY**



FAMILY NAME: