



User Manual  
Manuel de l'utilisateur  
Guía del usuario

E11-G13- element classic  
Z02-Hub -Sengled Hub

LED + Smart Control



## System Features:

- Control Element lighting from anywhere at anytime
- Schedule scenes based on timing, brightness and
- View current power and historic energy consumption.
- Control Sengled Element bulbs via local Wi-Fi network or Sengled cloud
- Track and report number of power cycles and usage hours

## Element Bulb Features

- Wireless control
- Dimmable via Element app
- Support for warm white 2700K color temperature
- 25,000 hour LED lifetime
- Wide beam angle
- Supports Zigbee HA 1.2.1

## Element Hub Features:

- Connects up to 50 Element bulbs via the Element mobile app
- Wirelessly control groups and individual Element bulbs
- Supports Zigbee HA 1.2.1

## Element Bulb Specification

- Model: E11-G13
- Power: 9.0W
- Brightness: 800 lumens
- Beam Angle: 220°
- Input: 100-130V AC, 50/60Hz, 85mA
- Light Socket: E26
- Operating Temperature: -4 °F - + 104 °F (-20 °C - + 40 °C)
- Storage Temperature: -40 °F - + 158 °F (-40 °C - +70 °C)
- Operating Humidity: 10% ≤ RH ≤ 95%, non-condensing
- Dimensions: Dia: 2.4in (61.5mm); H: 4.4in (112mm)

## Element Hub Specification

- Model: Z02-hub
- Input: 5V DC, 300mA
- Adapter Input: 100-240V AC, 30mA; Output: 5V DC, 1A
- Dimensions: L: 78mm; W: 78mm; H: 26mm
- Support Zigbee HA 1.2.1 and 2.4 GHz Wi-Fi

## Box Contents

- Two Element A19 Bulbs and One Hub
- One Ethernet Cable
- Quick Start Guide
- User Manual
- Limited Written Express Warranty

## Local Operations

**\*To ensure the following steps work successfully, please power on the bulb first and wait for at least four seconds before taking any of the steps.**

**Reset the hub:** The hub has to be reset when changing Wi-Fi networks. Press and hold the white round button on the side of the hub for at minimum eight seconds and then release it, the middle blue signal indicator light on the front of the hub should flash eight times if the reset is successful. Wait for up to 30 seconds for the indicator light to steady.

**Rejoin wireless network from the bulb:** Power cycle the bulb (off then back on) five times quickly. The bulb will blink two times indicating network rejoin.

**Reset factory default for the bulb:** Power cycle the bulb (off then back on) quickly for at minimum ten times. The bulb will blink five times indicating pairing mode.

**EZ-Mode commissioning from the bulb:** Power cycle the bulb (off then back on) seven times quickly to enable EZ-Mode. The bulb will blink to indicate that it is in this mode for three minutes. To exit this mode earlier, power off the bulb via the wall switch, wait for two seconds and then power it back on.

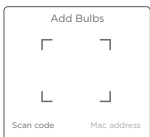
## System Setup Instructions

- Please review the Quick Start guide for instructions on how to set up the Element Hub
- Please contact customer service via [Sengled.com](https://Sengled.com) for information on how to purchase additional bulbs. To add additional bulbs, please follow the in-app instructions to scan, power on and add the bulbs to their desired hub as shown below

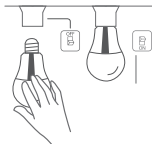
- **NOTE: Bulbs associated with another Sengled account must first be deleted and factory reset. Refer to the Local Operations section of the User Manual for instructions on how to factory reset a bulb.**
- **NOTE: Bulbs accidentally deleted from a Sengled account must first be factory reset before being re-added.**



(1)



(2)



(3)



(4)

## Important Safety Instructions



- This product is intended for indoor use only
- Do not install the product near any heat sources, such as heaters, radiators, stoves, heat registers or other apparatus that produce heat
- To reduce the risk of electric shock, do NOT disassemble. There are no serviceable parts inside
- Do not clean the device when it is on and connected to the power supply

- For best protection against lightning, unplug or unscrew the products from its power source during a storm
- The bulb will be hot when in use and should not be touched without taking care
- Do NOT throw the LED bulb into regular trash at the end of its life. Bring the bulb to a local recycling center for proper disposal

### CAUTION:

NOT FOR EMERGENCY LIGHTING

RISK OF ELECTRIC SHOCK-DO NOT USE WHERE DIRECTLY EXPOSED TO WATER



E11-G13

FCC ID: 2AGN8-E11G13

IC: 20888-E11G13

Z02-hub

FCC ID: 2AGN8-Z02HUB

IC: 20888-Z02-HUB

## Federal Communications Commission (FCC) Interference Statement

This equipment has been tested and found to comply with the limits for a Class B digital device, pursuant to Part 15 of the FCC Rules. These limits are designed to provide reasonable protection against harmful interference in a residential installation. This equipment generate, uses and can radiate radio frequency energy and, if not installed and used in accordance with the instructions, may cause harmful interference to radio communications.

However, there is no guarantee that interference will not occur in a particular installation. If this equipment does cause harmful interference to radio or television reception, which can be determined by turning the equipment off and on, the user is encouraged to try to correct the interference by one of the following measures:

- Reorient or relocate the receiving antenna.
- Increase the separation between the equipment and receiver.
- Connect the equipment into an outlet on a circuit different from that to which the receiver is connected.
- Consult the dealer or an experienced radio/TV technician for help.

This device complies with Part 15 of the FCC Rules. Operation is subject to the following two conditions:

(1) This device may not cause harmful interference, and (2) this device must accept any interference received, including interference that may cause undesired operation.

FCC Caution: Any changes or modifications not expressly approved by the party responsible for compliance could void the user's authority to operate this equipment.

## RF exposure warning

This equipment complies with FCC radiation exposure limits set forth for an uncontrolled environment.

This equipment must be installed and operated in accordance with provided instructions and the antenna(s) used for this transmitter must be installed to provide a separation distance of at least 20 cm from all persons and must not be collocated or operating in conjunction with any other antenna or transmitter.

## IC Radiation Exposure Statement for Canada

This device complies with Industry Canada licence-exempt RSS standard(s). Operation is subject to the following two conditions: (1) this device may not cause interference, and (2) this device must accept any interference, including interference that may cause undesired operation of the device.

Le présent appareil est conforme aux CNR d'Industrie Canada applicables aux appareils radio exempts de licence. L'exploitation est autorisée aux deux conditions suivantes: (1) l'appareil ne doit pas produire de brouillage, et (2) l'utilisateur de l'appareil doit accepter tout brouillage radioélectrique subi, même si le brouillage est susceptible d'en compromettre le fonctionnement.

Under Industry Canada regulations, this radio transmitter may only operate using an antenna of a type and maximum (or lesser) gain approved for the transmitter by Industry Canada. To reduce potential radio interference to other users, the antenna type and its gain should be so chosen that the equivalent isotropically radiated power (e.i.r.p.) is not more than that necessary for successful communication.

Conformément à la réglementation d'Industrie Canada, le présent émetteur radio peut

fonctionner avec une antenne d'un type et d'un gain maximal (ou inférieur) approuvé pour l'émetteur par Industrie Canada. Dans le but de réduire les risques de brouillage radioélectrique à l'intention des autres utilisateurs, il faut choisir le type d'antenne et son gain de sorte que la puissance isotrope rayonnée équivalente (p.i.r.e.) ne dépasse pas l'intensité nécessaire à l'établissement d'une communication satisfaisante.

User manuals for transmitters equipped with detachable antennas shall also contain the following notice in a conspicuous location:

This radio transmitter (identify the device by certification number, or model number if Category II) has been approved by Industry Canada to operate with the antenna types listed below with the maximum permissible gain and required antenna impedance for each antenna type indicated. Antenna types not included in this

list, having a gain greater than the maximum gain indicated for that type, are strictly prohibited for use with this device.

Le présent émetteur radio (identifier le dispositif par son numéro de certification ou son numéro de modèle s'il fait partie du matériel de catégorie I) a été approuvé par Industrie Canada pour fonctionner avec les types d'antenne énumérés ci-dessous et ayant un gain admissible maximal et l'impédance requise pour chaque type d'antenne. Les types d'antenne non inclus dans cette liste, ou dont le gain est supérieur au gain maximal indiqué, sont strictement interdits pour l'exploitation de l'émetteur.

**IMPORTANT NOTE:**

Radiation Exposure Statement:

This equipment complies with "Industry Canada RSS-102 for radiation exposure limits set forth for an uncontrolled environment". This equipment should be installed and operated with minimum distance 20cm between the radiator and your body.

sengled