

GSM 850

Frequency: 836.6 MHz; Duty Cycle: 1:1.99986; Room Ambient Temperature: 24.0°C; Liquid Temperature: 23.0°C
Medium parameters used (interpolated): $f = 836.6$ MHz; $\sigma = 1.006$ S/m; $\epsilon_r = 56.922$; $\rho = 1000$ kg/m³
DASY5 Configuration:

- Area Scan Setting: Find Secondary Maximum Within: 2.0 dB and with a peak SAR value greater than 0.0012W/kg
- Electronics: DAE4 Sn1434; Calibrated: 4/19/2017
- Probe: EX3DV4 - SN7463; ConvF(9.48, 9.48, 9.48); Calibrated: 7/5/2017;
- Sensor-Surface: 2.5mm (Mechanical Surface Detection)
- Phantom: ELI V5.0 Slot 1/2; Type: QD OVA 002 AA; Serial: 1248

Rear Flat/GPRS 4 slots_ch 190/Area Scan (11x11x1): Measurement grid: dx=15mm, dy=15mm

[Info: Interpolated medium parameters used for SAR evaluation.](#)

Maximum value of SAR (measured) = 1.45 W/kg

Rear Flat/GPRS 4 slots_ch 190/Zoom Scan (8x5x7)/Cube 0: Measurement grid: dx=8mm, dy=8mm, dz=5mm

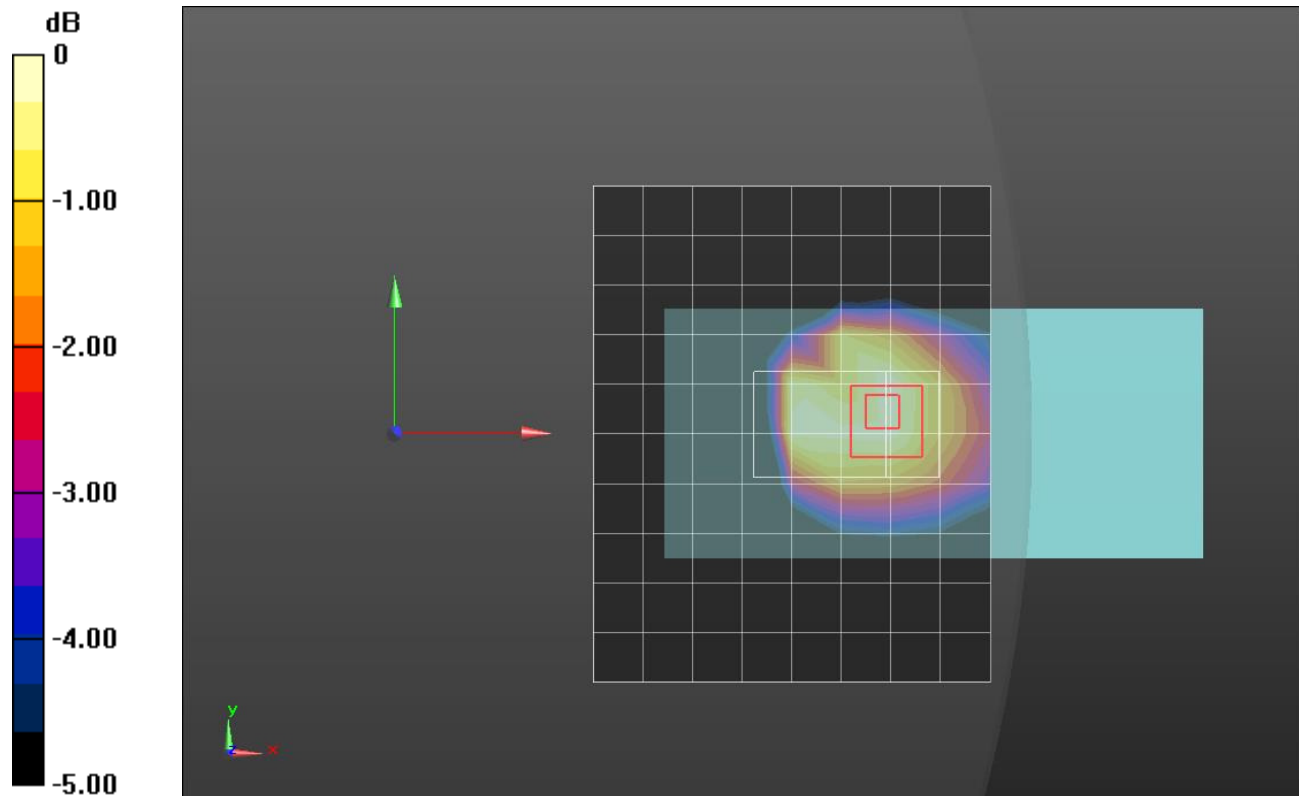
Reference Value = 38.26 V/m; Power Drift = -0.01 dB

Peak SAR (extrapolated) = 1.91 W/kg

SAR(1 g) = 1.24 W/kg; SAR(10 g) = 0.876 W/kg

[Info: Interpolated medium parameters used for SAR evaluation.](#)

Maximum value of SAR (measured) = 1.47 W/kg



0 dB = 1.47 W/kg = 1.67 dBW/kg

GSM 1900

Frequency: 1880 MHz; Duty Cycle: 1:1.99986; Room Ambient Temperature: 24.0°C; Liquid Temperature: 23.0°C
Medium parameters used: $f = 1880$ MHz; $\sigma = 1.544$ S/m; $\epsilon_r = 52.594$; $\rho = 1000$ kg/m³

DASY5 Configuration:

- Area Scan Setting: Find Secondary Maximum Within: 2.0 dB and with a peak SAR value greater than 0.0012W/kg
- Electronics: DAE4 Sn1380; Calibrated: 7/24/2017
- Probe: EX3DV4 - SN7335; ConvF(8.18, 8.18, 8.18); Calibrated: 3/15/2017;
- Sensor-Surface: 1.4mm (Mechanical Surface Detection), Sensor-Surface: 2.5mm (Mechanical Surface Detection)
- Phantom: ELI V5.0 Slot 1/2; Type: QD OVA 001 BB; Serial: 1120

Rear Slant/GPRS 4 slots_ch 661/Area Scan (9x13x1): Measurement grid: dx=15mm, dy=15mm
Maximum value of SAR (measured) = 3.24 W/kg

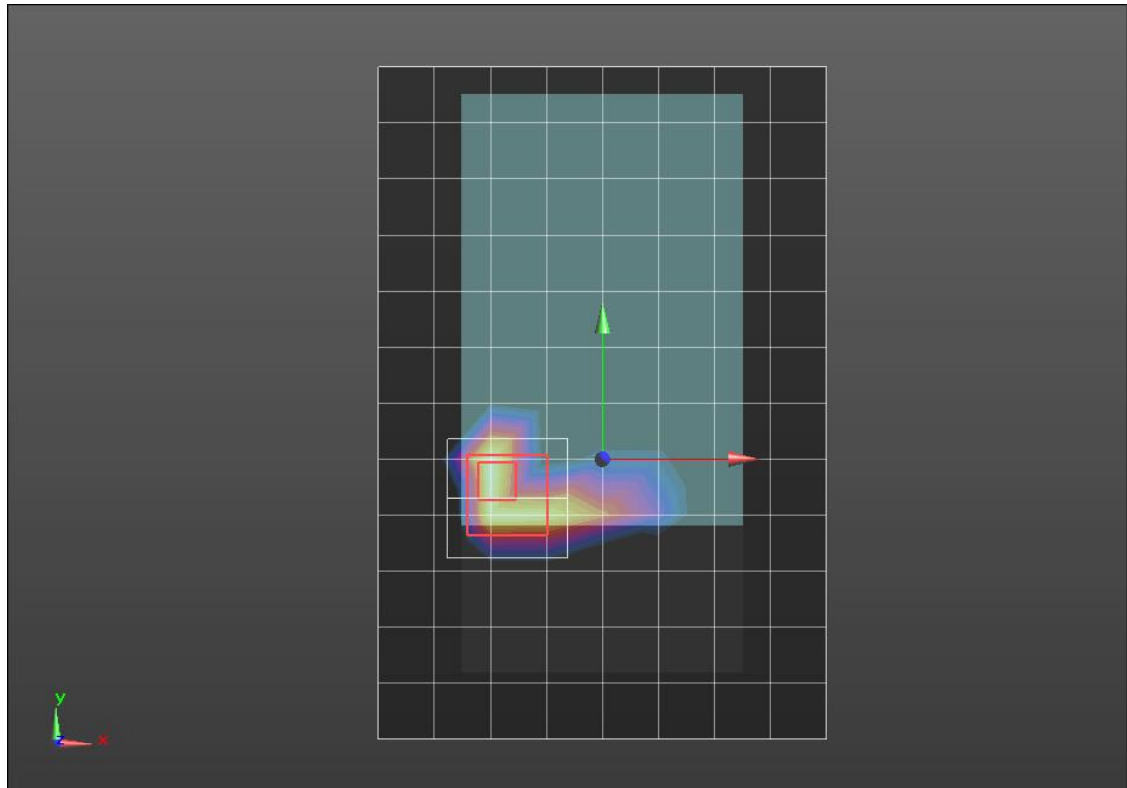
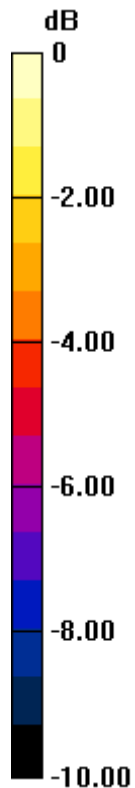
Rear Slant/GPRS 4 slots_ch 661/Zoom Scan (5x5x7)/Cube 0: Measurement grid: dx=8mm, dy=8mm, dz=5mm

Reference Value = 42.34 V/m; Power Drift = -0.05 dB

Peak SAR (extrapolated) = 4.55 W/kg

SAR(1 g) = 2.15 W/kg; SAR(10 g) = 0.912 W/kg

Maximum value of SAR (measured) = 3.09 W/kg



0 dB = 3.09 W/kg = 4.90 dBW/kg

W-CDMA Band II

Frequency: 1880 MHz; Duty Cycle: 1:1; Room Ambient Temperature: 24.0°C; Liquid Temperature: 23.0°C

Medium parameters used: $f = 1880$ MHz; $\sigma = 1.544$ S/m; $\epsilon_r = 52.594$; $\rho = 1000$ kg/m³

DASY5 Configuration:

- Area Scan Setting: Find Secondary Maximum Within: 2.0 dB and with a peak SAR value greater than 0.0012W/kg
- Electronics: DAE4 Sn1380; Calibrated: 7/24/2017
- Probe: EX3DV4 - SN7335; ConvF(8.18, 8.18, 8.18); Calibrated: 3/15/2017;
- Sensor-Surface: 1.4mm (Mechanical Surface Detection), Sensor-Surface: 2.5mm (Mechanical Surface Detection)
- Phantom: ELI V5.0 Slot 1/2; Type: QD OVA 001 BB; Serial: 1120

Rear Slant/RMC Rel. 99_ch 9400/Area Scan (9x15x1): Measurement grid: dx=15mm, dy=15mm

Maximum value of SAR (measured) = 10.3 W/kg

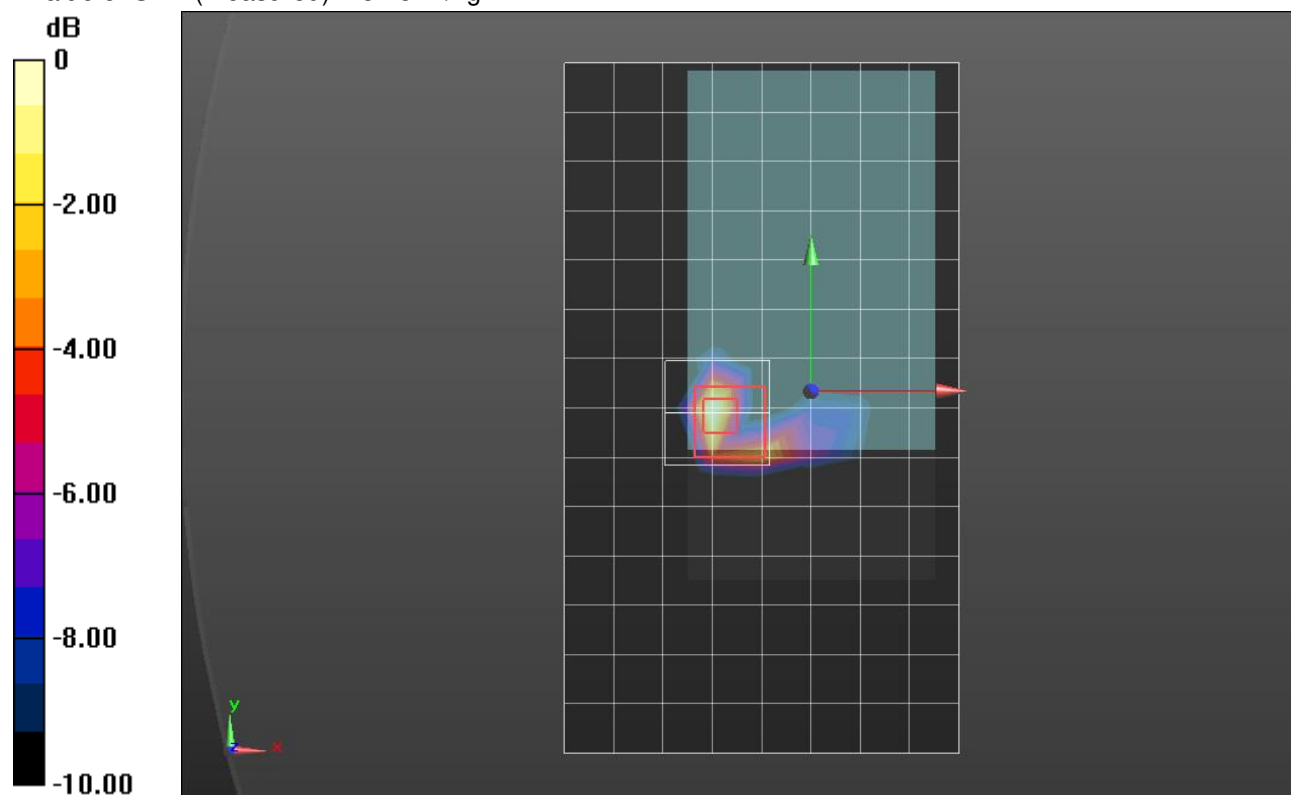
Rear Slant/RMC Rel. 99_ch 9400/Zoom Scan (5x5x7)/Cube 0: Measurement grid: dx=8mm, dy=8mm, dz=5mm

Reference Value = 72.35 V/m; Power Drift = -0.17 dB

Peak SAR (extrapolated) = 11.3 W/kg

SAR(1 g) = 4.83 W/kg; SAR(10 g) = 2.03 W/kg

Maximum value of SAR (measured) = 8.28 W/kg



0 dB = 8.28 W/kg = 9.18 dBW/kg

W-CDMA Band V

Frequency: 836.6 MHz; Duty Cycle: 1:1; Room Ambient Temperature: 24.0°C; Liquid Temperature: 23.0°C

Medium parameters used (interpolated): $f = 836.6$ MHz; $\sigma = 1.022$ S/m; $\epsilon_r = 54.312$; $\rho = 1000$ kg/m³

DASY5 Configuration:

- Area Scan Setting: Find Secondary Maximum Within: 2.0 dB and with a peak SAR value greater than 0.0012W/kg
- Electronics: DAE4 Sn1434; Calibrated: 4/19/2017
- Probe: EX3DV4 - SN7463; ConvF(9.48, 9.48, 9.48); Calibrated: 7/5/2017;
- Sensor-Surface: 1.4mm (Mechanical Surface Detection), Sensor-Surface: 2.5mm (Mechanical Surface Detection)
- Phantom: ELI V5.0 Slot 1/2; Type: QD OVA 002 AA; Serial: 1248

Rear Flat/RMC Rel. 99_ch 4183/Area Scan (10x14x1): Measurement grid: dx=15mm, dy=15mm

[Info: Interpolated medium parameters used for SAR evaluation.](#)

Maximum value of SAR (measured) = 1.70 W/kg

Rear Flat/RMC Rel. 99_ch 4183/Zoom Scan (8x6x7)/Cube 0: Measurement grid: dx=8mm, dy=8mm, dz=5mm

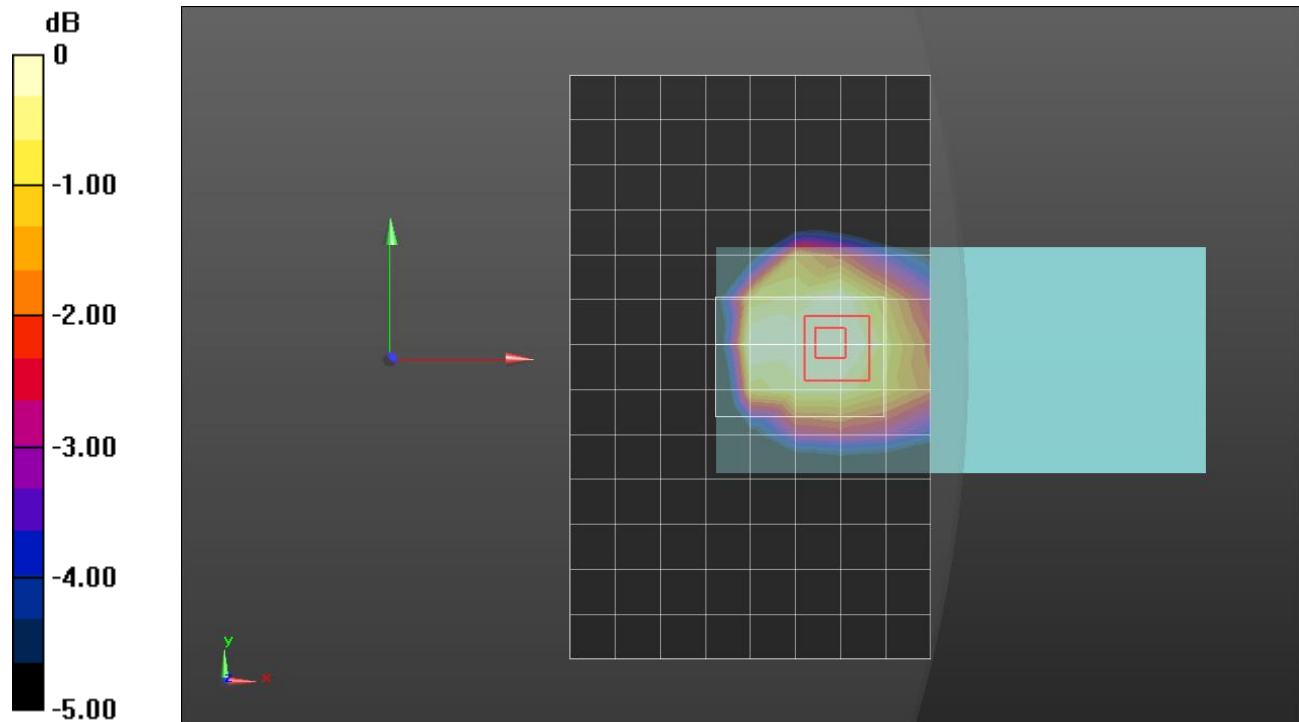
Reference Value = 39.50 V/m; Power Drift = 0.01 dB

Peak SAR (extrapolated) = 1.86 W/kg

SAR(1 g) = 1.35 W/kg; SAR(10 g) = 0.958 W/kg

[Info: Interpolated medium parameters used for SAR evaluation.](#)

Maximum value of SAR (measured) = 1.57 W/kg



0 dB = 1.57 W/kg = 1.96 dBW/kg