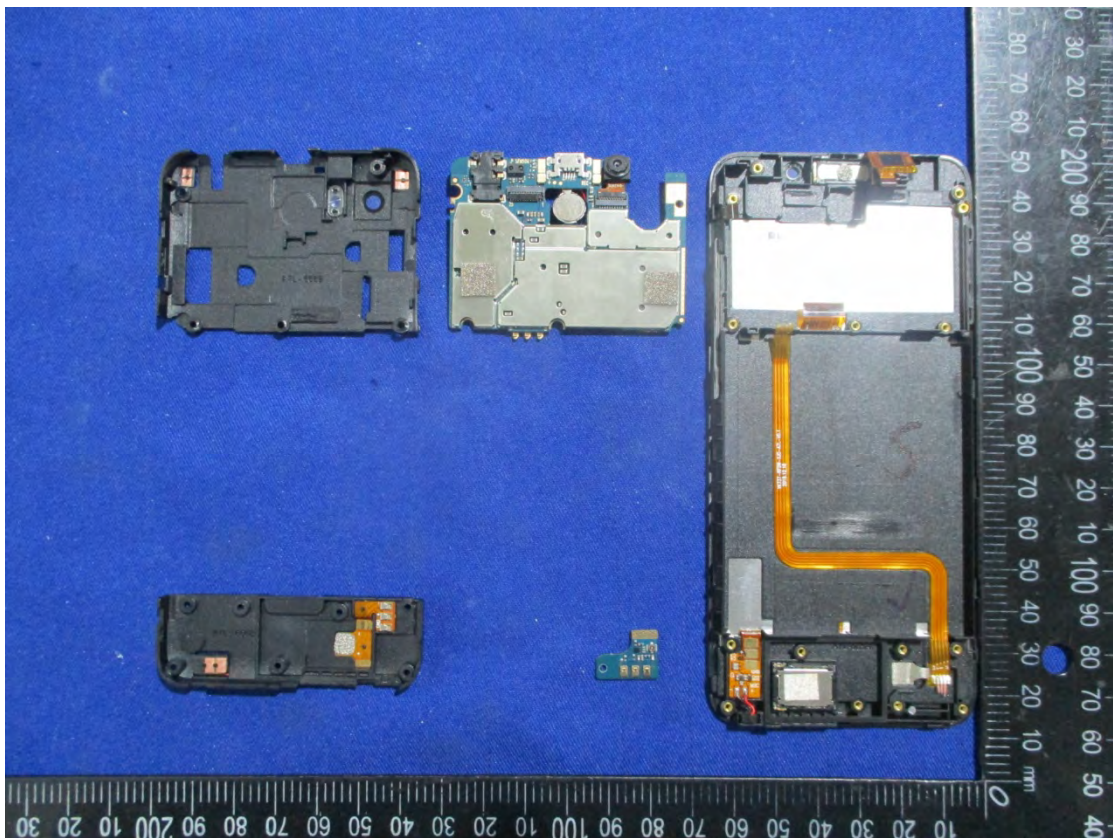
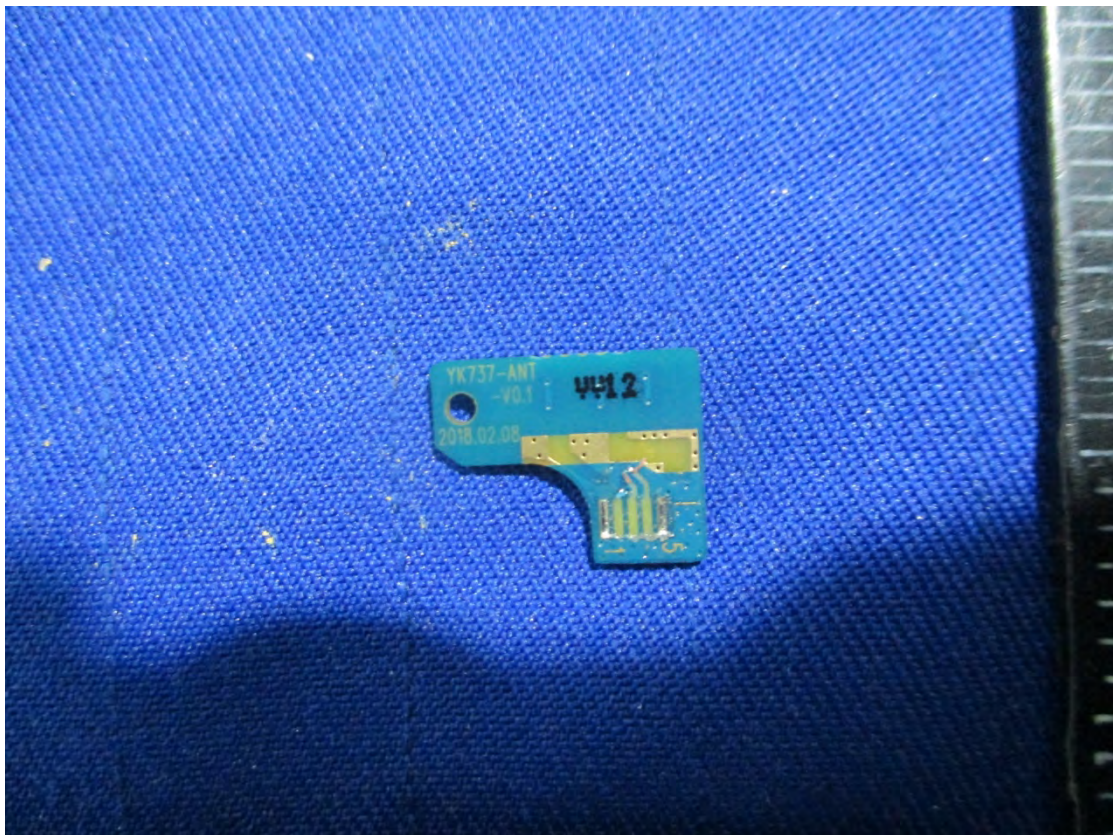
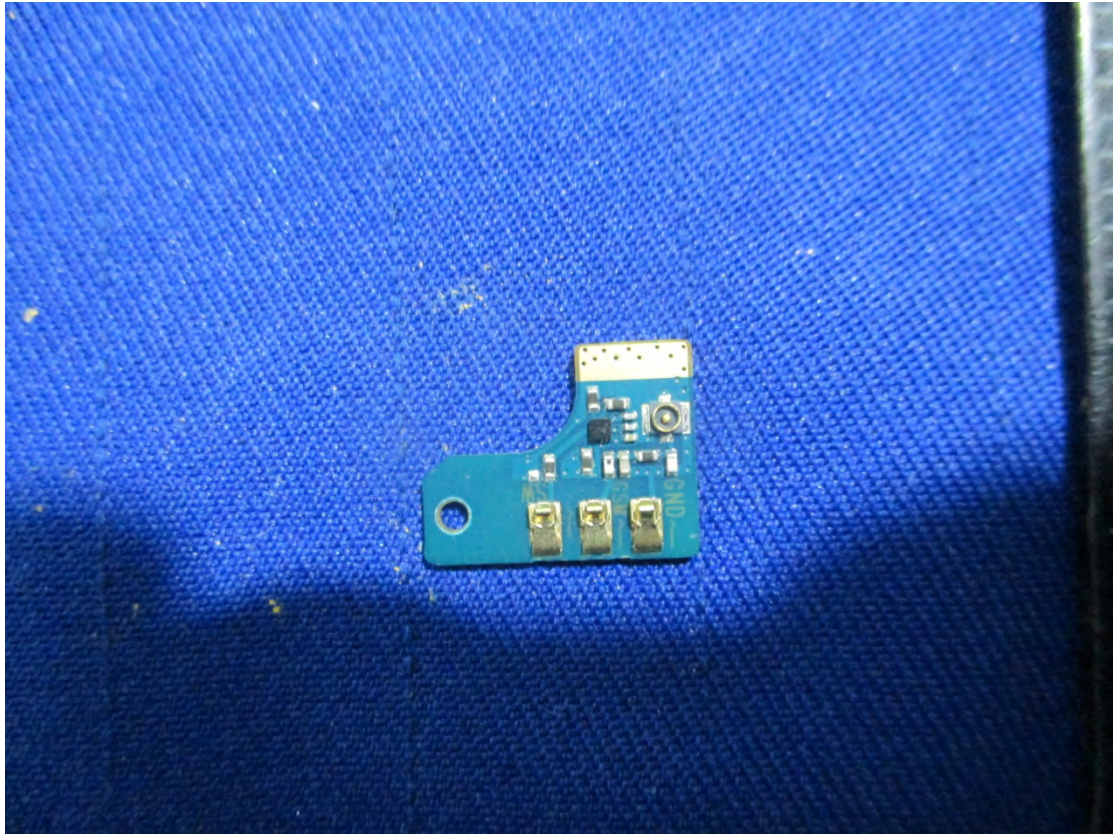


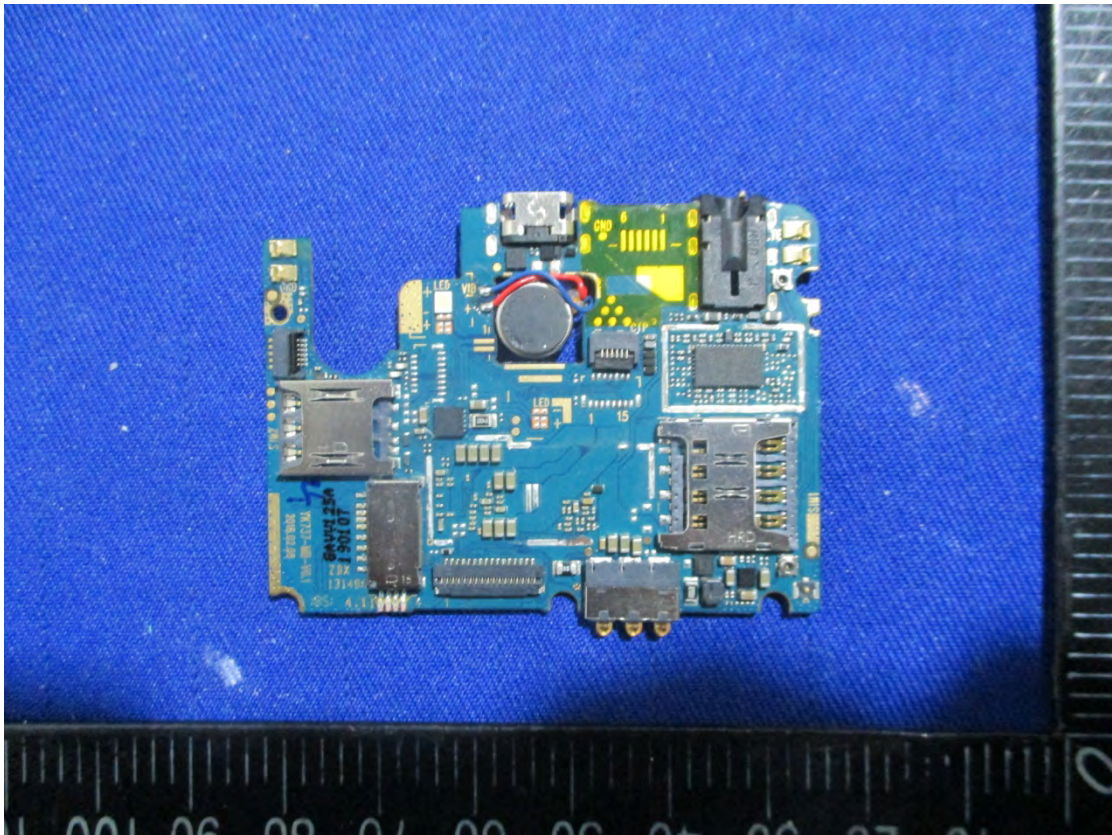
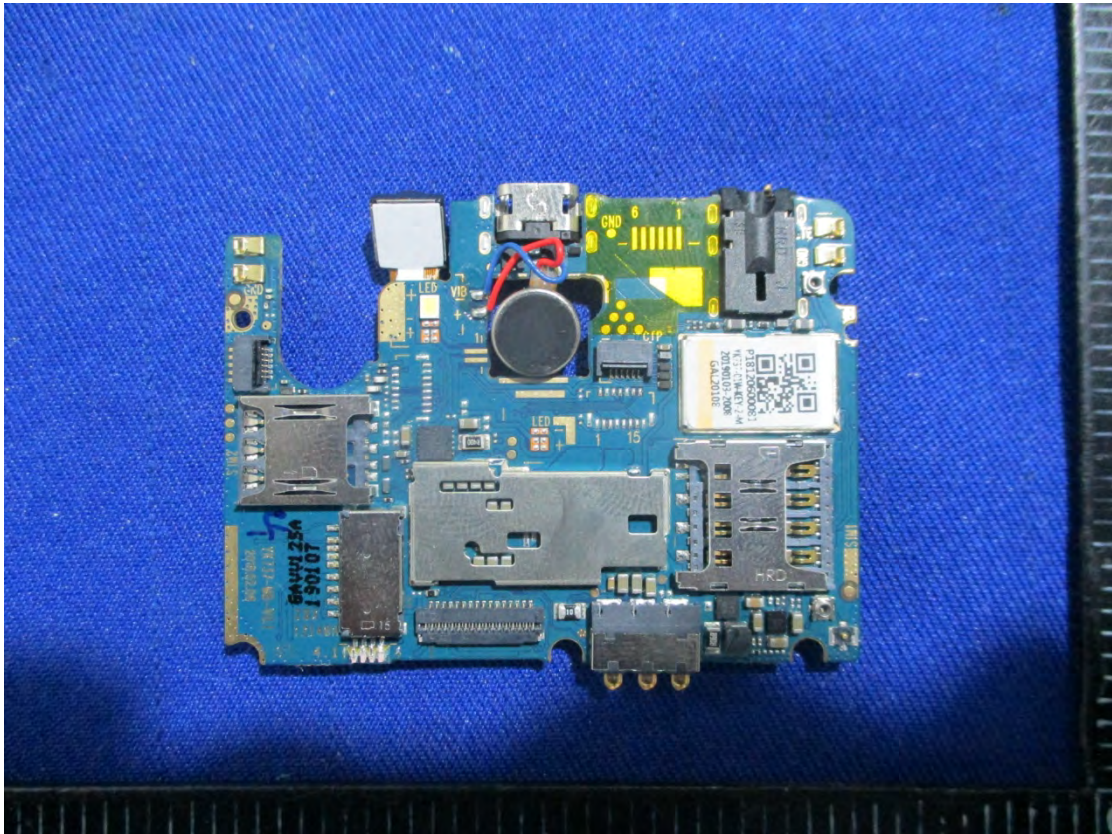
## EXHIBIT C – EUT INTERNAL PHOTOGRAPHS



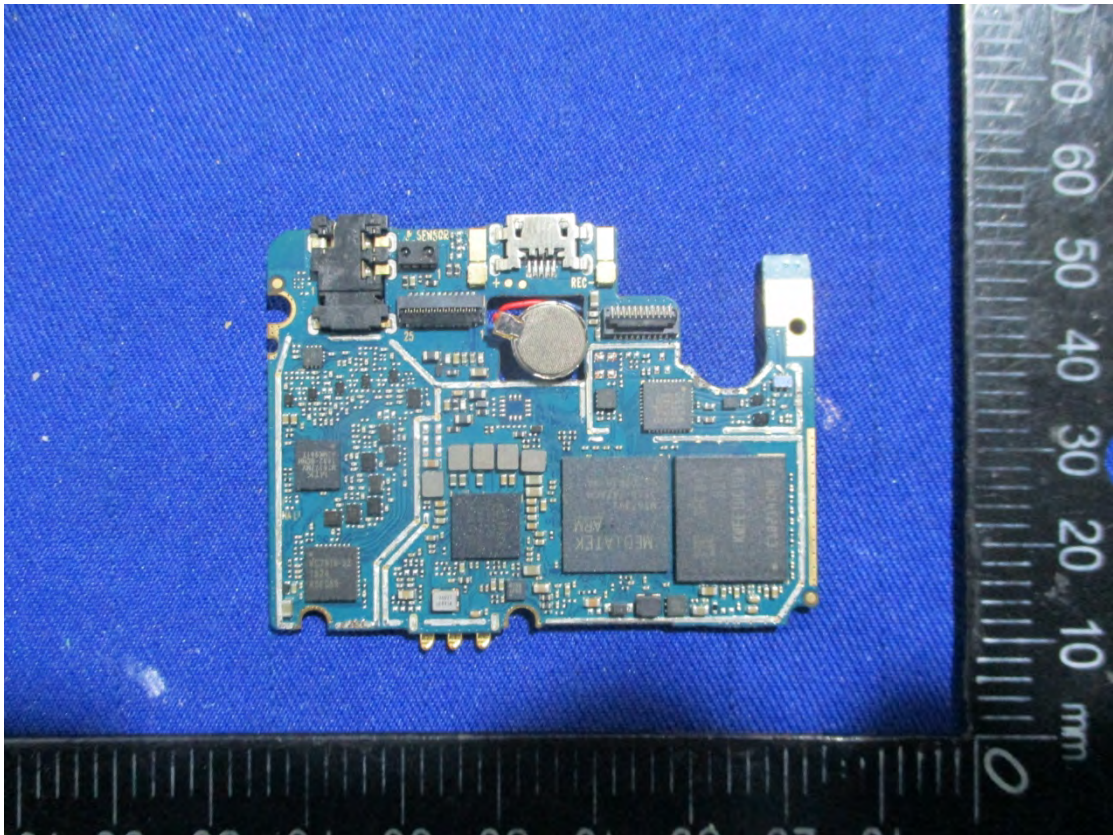
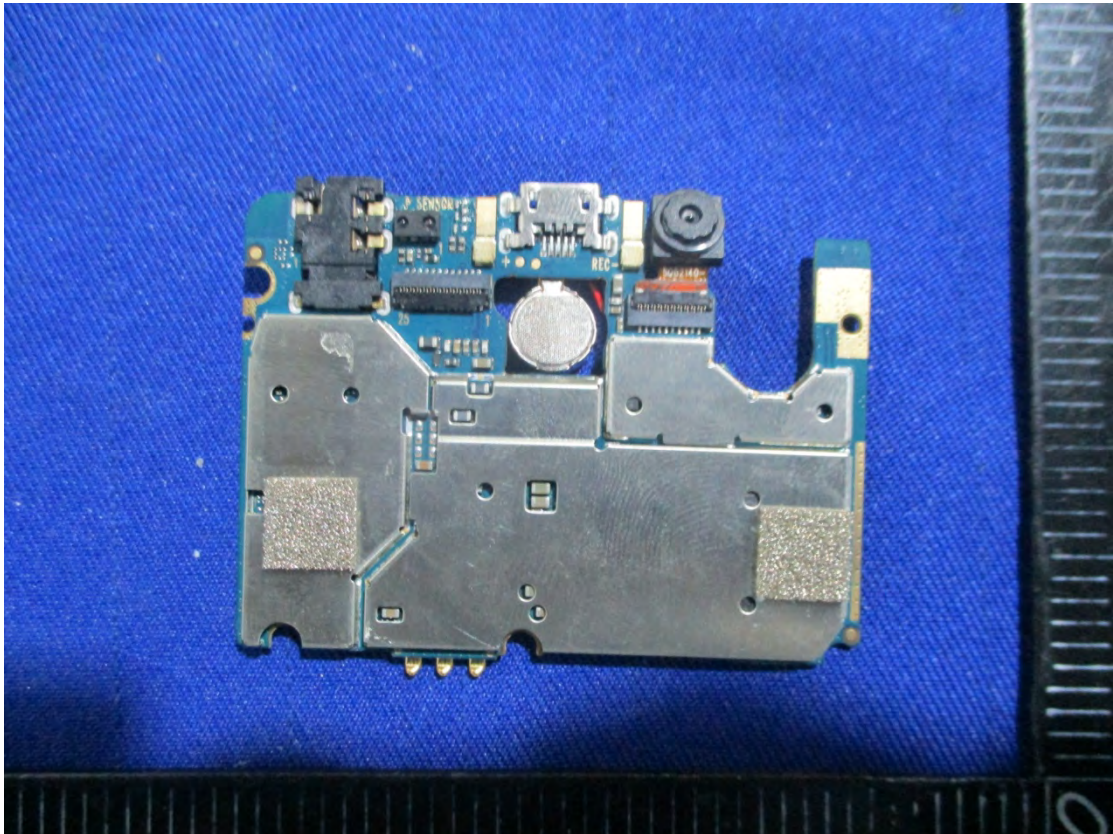














A close-up photograph of a MediaTek MT6625LN processor mounted on a blue printed circuit board (PCB). The processor is a small, square, black integrated circuit with gold-colored pins. The text on the processor is printed in gold and includes the MediaTek logo, the model number MT6625LN, and other identifiers like 1839-AJCNL, BAP1M072, and ATG39N11. The PCB is populated with various other components, including larger black chips at the top and bottom, and numerous small surface-mount components. The background is slightly blurred, focusing attention on the central processor.

A close-up photograph of a MediaTek MT6177MV processor mounted on a blue printed circuit board (PCB). The processor is a square, black integrated circuit with the text "MTK", "MT6177MV", "1832-BCNH", and "ACMK941T" printed on its top surface. The PCB is densely populated with various surface-mount components, including numerous small, silver-colored capacitors and several larger, rectangular components. Some of these larger components are labeled with "MTK" and "D" followed by a number. The background is a solid blue color, likely the surface of the PCB or a protective layer.



**BT&Wifi Antenna View**



**GSM&WCDMA&LTE Antenna View**





**RX Antenna View**



**Battery View**



### Battery Label View

