

# WIFI MAIN Antenna (P9409A)

## 1. Explanation of Product number :

**S L K - Z C - P 9 4 0 9 A - R - 2 7 0 I V - B**

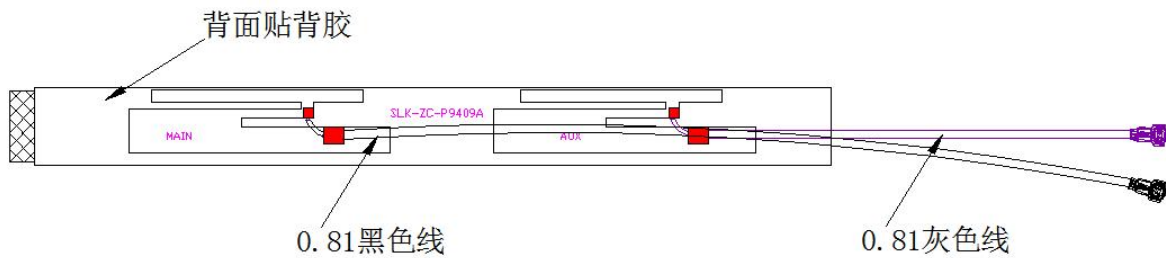
**1**

**2**

**3**

**4**

**5**



Manufacturer: Shenzhen Yishengbang Technology Co., Ltd

Address: 101, Building C, Qianwan Hard Technology Industrial Park, Bao'an District, Shenzhen

Product Code:

(1) Customer:

ZC:

(2) Project:

P9409A: SLK-ZC-P9409A (WIFIMAIN antenna)

(3) Welding Position

R: Right

(4) Cable Length:

270: 270IV\*0.81MM

(5) Cable Color

B: Black

## 2. Features

\*Stable and reliable in performances

\*Compact size

\*RoHS compliance

## 3. Applications

\* IEEE802.11 (a/b/g/n)

\* Hand-held devices when WIFI (802.11a/b/g/n) functions are needed

## 4. Description

Holy bond's FPC antenna series are specially designed for WIFI (802.11 a/b/g/n) applications. Based on Holy bond's proprietary design and processes, this FPC antenna has excellent stability and sensitivity to consistently provide high signal reception efficiency.

## 5. Electrical Specifications

### 5-1

Characteristics	Specifications	Unit
Outline Dimensions	94.5x9.2x 0.12	mm
Center Frequency	2.4-2.5-5.15-5.85	GHz
Bandwidth(under-10dB return loss)	130min	MHz
VSWR	3max	

### 5-2.

#### VSWR

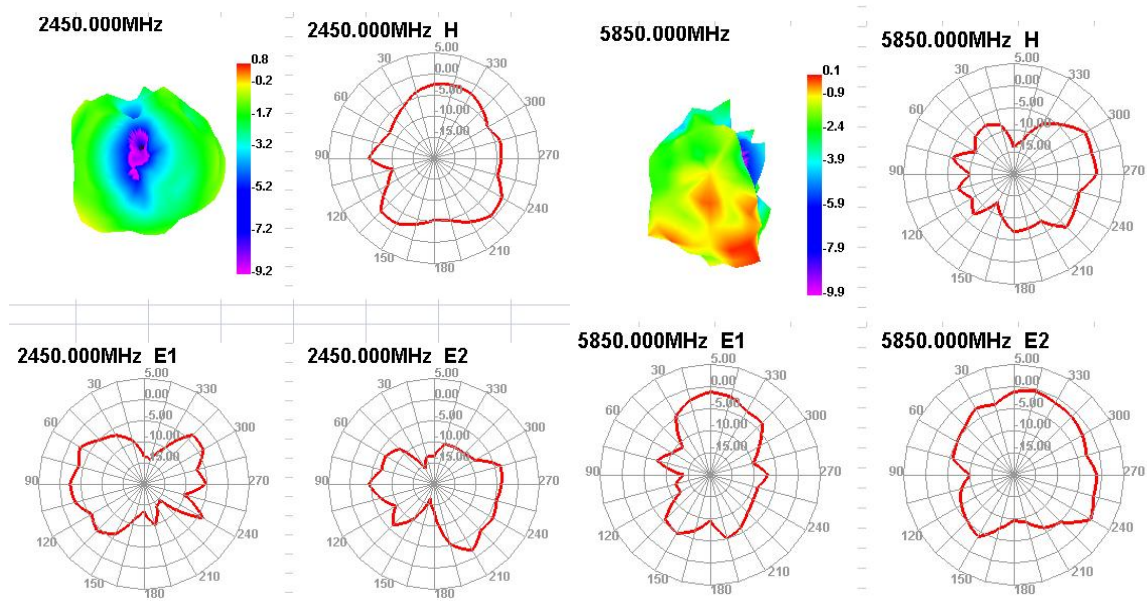


#### S11

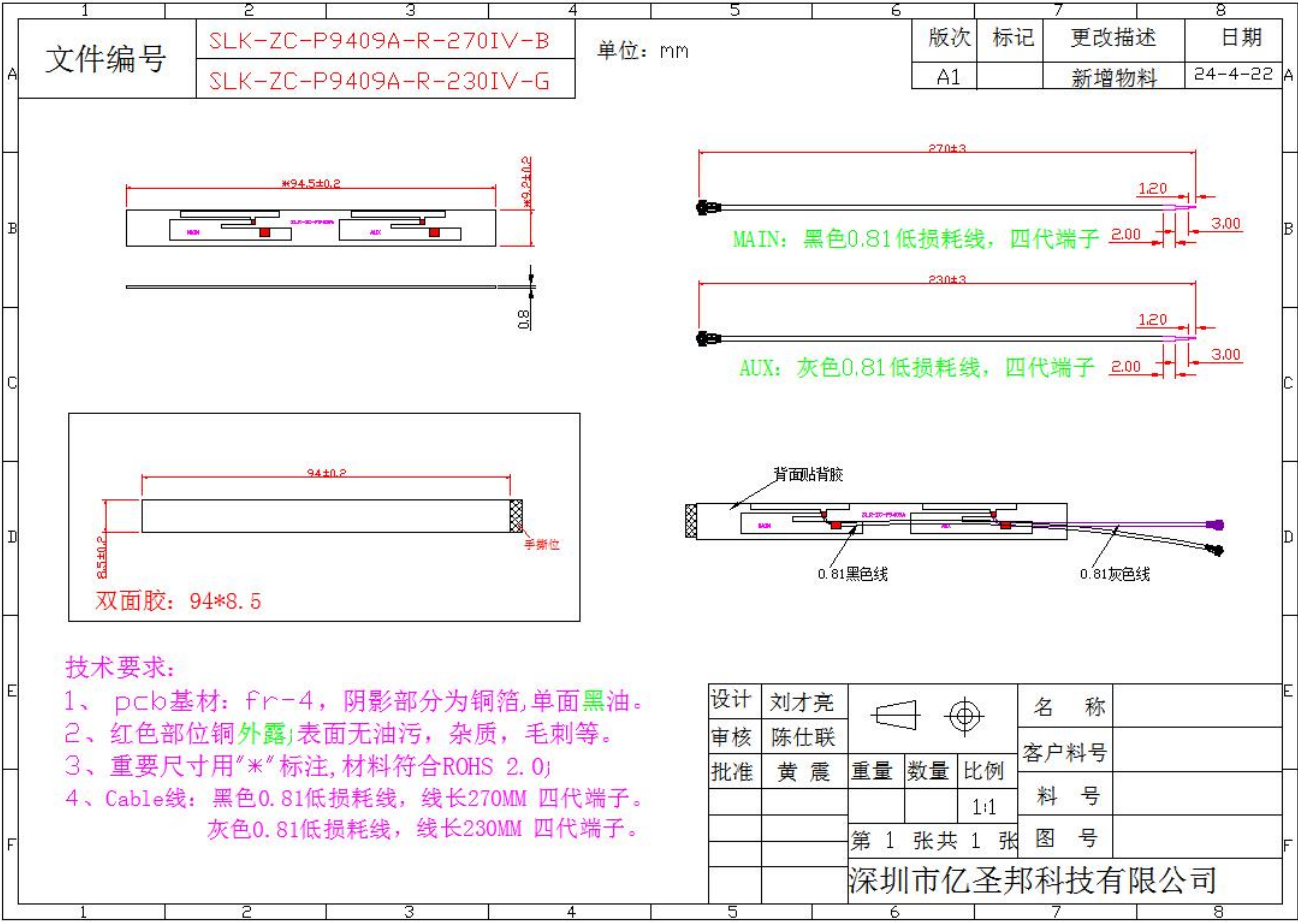


### 5-3. 2.4G WIFI +BT Antenna Gain/Efficiency/Radiation Pattern of 3D

Frequency(MHz)	Efficiency (%)	Average Gain(dB)	Peak GAIN (dBi)
2400	30.01	-5.23	0.51
2410	31.99	-4.95	1.04
2420	31.1	-5.07	-0.51
2430	33.54	-4.74	1.09
2440	31.86	-4.97	0.32
2450	33.37	-4.77	0.84
2460	32.63	-4.86	0.84
2470	32.73	-4.85	0.98
2480	33.94	-4.69	1.26
2490	34.54	-4.62	1.17
2500	33.67	-4.73	1.13
5150	37.8	-4.23	0.97
5350	36.82	-4.34	1.93
5550	41.95	-3.77	2.66
5750	35.31	-4.52	1.09
5850	34.77	-4.59	0.09



6. Antenna Dimensions (unit: mm)



# WIFI AUX Antenna (P9409A)

## 1. Explanation of Product number :

**S L K - Z C - P 9 4 0 9 A - R - 2 3 0 I V - G**

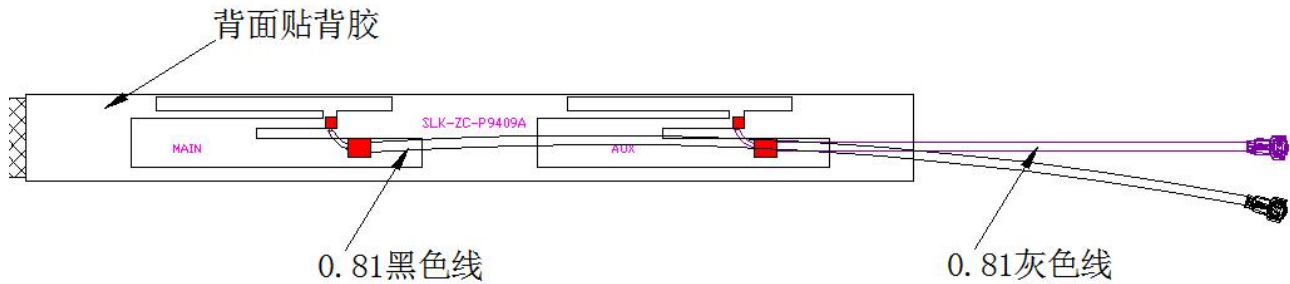
**1**

**2**

**3**

**4**

**5**



Product Code:

(1) Customer:

ZC:卓创

(2) Project:

P9409A: SLK-ZC-P9409A (WIFIAUX antenna)

(3) Welding Position

R: Right

(4) Cable Length:

230: 230IV\*0.81MM四代端子

(5) Cable Color

G: Gray

## 2. Features

- \*Stable and reliable in performances
- \*Compact size
- \*RoHS compliance

## 3. Applications

- \* IEEE802.11 (ac/a/b/g/n)
- \* Hand-held devices when WIFI (802.11ac/a/b/g/n) functions are needed



## 4. Description

Holy bond's FPC antenna series are specially designed for WIFI (802.11 ac/a/b/g/n) applications. Based on Holy bond's proprietary design and processes, this FPC antenna has excellent stability and sensitivity to consistently provide high signal reception efficiency.

## 5. Electrical Specifications

### 5-1

Characteristics	Specifications	Unit
Outline Dimensions	94.5x 9.2x 0.12	mm
Center Frequency	2.4-2.5-5.15-5.85	GHz
Bandwidth(under-10dB return loss)	130min	MHz
VSWR	3max	

### 5-2.

#### VSWR

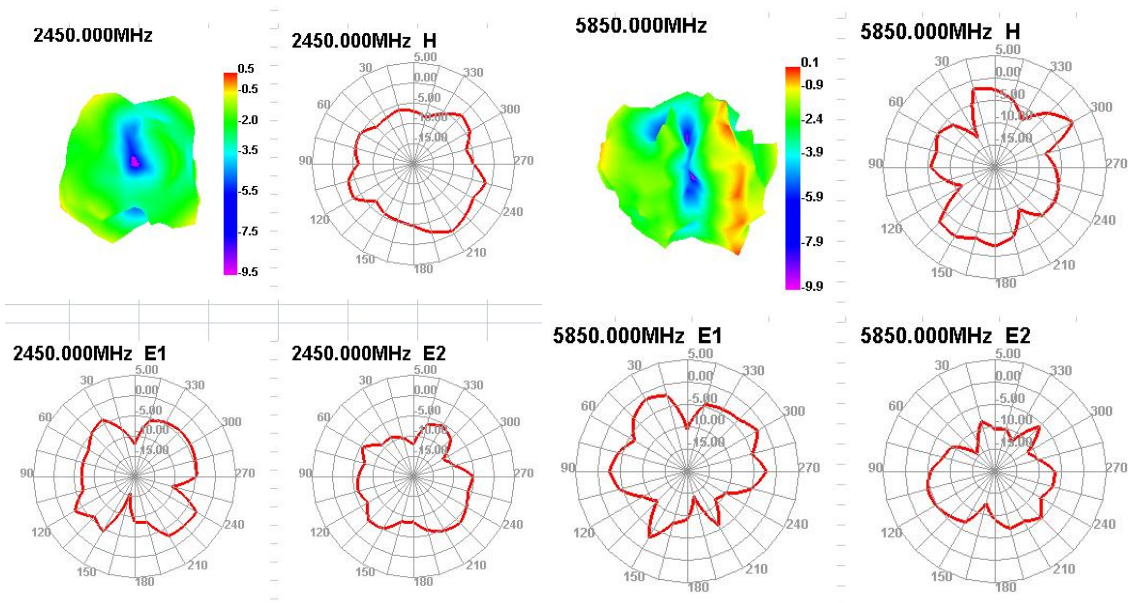


#### S11

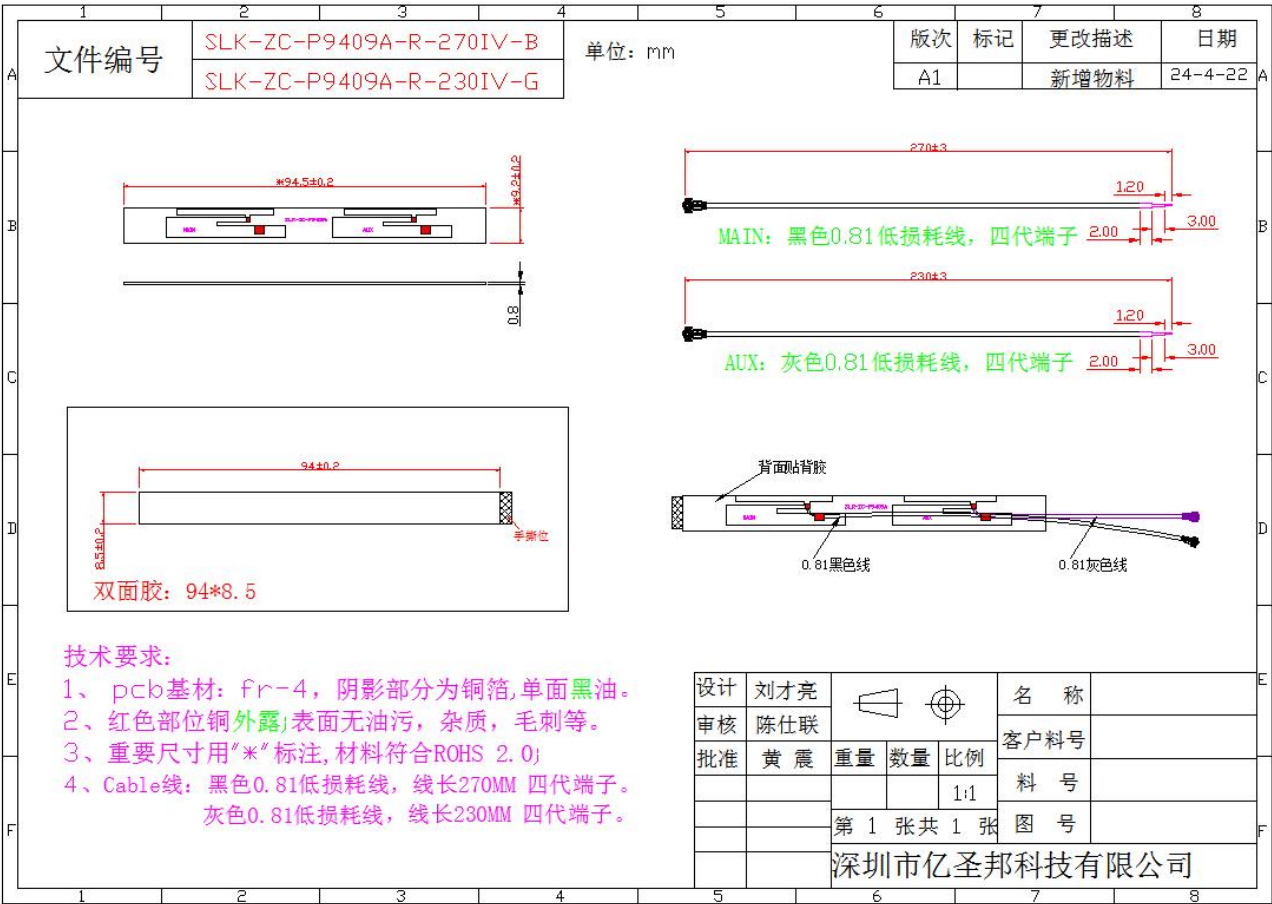


5-3. 5G WIFI Antenna Gain/Efficiency/Radiation Pattern of 3D

Frequency(MHz)	Efficiency (%)	AverageGain(dB)	Peak GAIN (dBi)
2400	34.06	-4.68	-0.64
2410	34.29	-4.65	-0.6
2420	35.23	-4.53	-0.32
2430	36.96	-4.32	0.02
2440	35.21	-4.53	0.01
2450	38.27	-4.17	0.5
2460	32.34	-4.9	-0.21
2470	35.3	-4.52	-0.02
2480	34.23	-4.66	-0.44
2490	36.74	-4.35	-0.49
2500	33	-4.82	-1.09
5150	30.62	-5.14	-0.59
5350	30.32	-5.18	0.49
5550	32.96	-4.82	0.56
5750	31.28	-5.05	-0.05
5850	29.56	-5.29	0.13

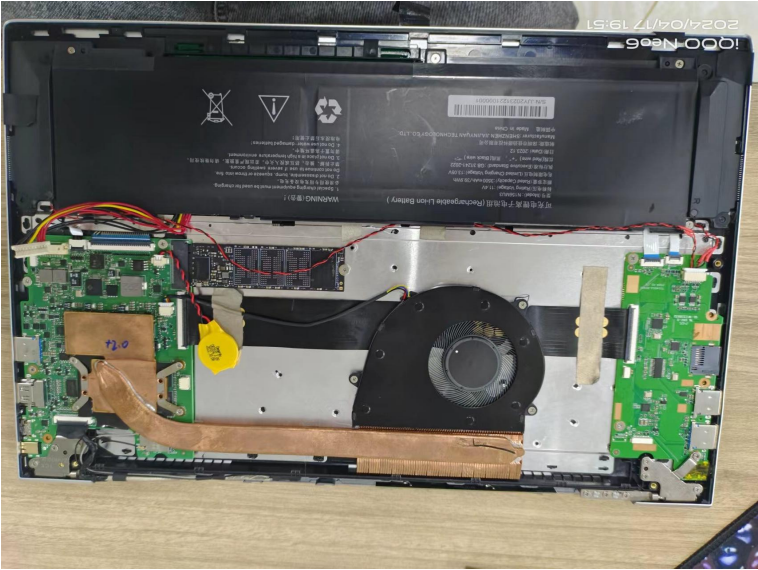


6. Antenna Dimensions (unit: mm)





7. Antenna Picture



**BT/2.4GWIFI**

**5G WIFI**