

INSTALLATION GUIDE



iCLASS SE® Reader

13.56 MHz / 2.4 GHz Contactless

R10

PLT-03314, Rev. A.1



www.hidglobal.com/PLT-03681

- Scan the QR code or visit the link to see the multi-language electronic version of this document.
- Lisez le code QR ou suivez le lien pour consulter la version française de ce document.
- Escanee el código QR o visite el vínculo para consultar la versión en Español de este documento.
- Scannen Sie den QR-Code oder öffnen Sie den Link für die deutsche Version dieses Dokuments.
- Faça a leitura do código QR ou acesse o link da versão em português deste documento.
- Scansione il codice QR o visita il link della versione Italiana di questo documento.
- Отсканируйте QR-код или перейдите по ссылке, чтобы получить версию этого документа на русском языке.
- 掃描 QR 碼或訪問此 文档的中文版本的链接。
- この文書の日本語版を表示するには、QR コードをスキャンするか、リンクをクリックします。
- QR 코드를 스캔하거나 링크를 방문하면 이 문서의 한국어 버전을 볼 수 있습니다.

Supplied parts

- iCLASS SE R10 Reader (1)
- Installation Guide (1)
- 0.138-20 x 1.5" screws (2) – for installing the reader directly to a wall (no junction box)
- 0.138-32 x 0.375" screws (3) – for Imperial (US) junction box installation (2) and attaching the reader to the back plate (1)
- M3.5 x 12mm screws (2) – for Metric (EU etc) junction box installation
- 0.138-32 x 0.375" security screw (1) – alternative security screw for attaching the reader to the back plate

Recommended parts (not supplied)

- Cable, 5-9 conductor (Wiegand or Clock-and-Data)
- Certified DC power supply
- Metal or plastic junction box
- Security tool HID 04-0001-03 (for anti-tamper screw)
- Drill with various bits for mounting hardware
- Mounting hardware
- Reader spacer (PN: 6132AKB) when mounting on or near metal or metal junction boxes - see How to Order Guide
- IP65 Mounting gasket (PN: IP65GSKT-R10, 10 pcs per kit), recommended for outdoor installation
- Junction box

© 2018 HID Global Corporation/ASSA ABLOY AB. All rights reserved. HID, the HID Brick logo, the Chain Design, HID Reader Manager, HID Mobile Access, and iCLASS SE are trademarks or registered trademarks of HID Global, ASSA ABLOY AB, or its affiliate(s) in the US and other countries and may not be used without permission. All other trademarks, service marks, and product or service names are trademarks or registered trademarks of their respective owners.



PLT-03314 A.0

Optional Features

Optical Tamper enabled by default – Once activated, when the mounting plate is removed, the optical tamper will open the circuit between Tamper#1 and Tamper#2 reader control lines. Tamper#1 and Tamper#2 control lines are interchangeable. Either of these lines can be connected with the reader ground line to reduce the number of cable cores required in the reader cable. The tamper control lines can operate within 0-12 VDC and 0-100 mA.

Configuration – The reader can be modified to meet the specific requirements of an installation. Configuration options include; audio visual, and CSN outputs. See the HID Reader Manager™ solution on www.hidglobal.com for further details.

1 Mount the backplate



ATTENTION
Observe precautions for handling
ELECTROSTATIC SENSITIVE DEVICES

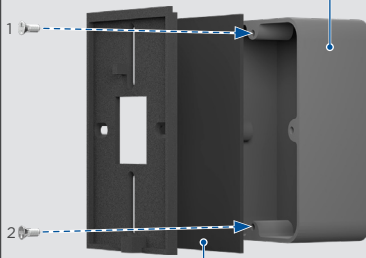
Mounting directly to the wall/
mullion mount



Use supplied 0.138-20 x 1.5" screws

Mounting to a junction box

Junction box (not supplied)
Mud ring required to mount on single
gang junction box (not supplied)



Optional gasket

For Imperial (US):
Use supplied 0.138-32 x 0.375" screws

For Metric (EU etc):
Use supplied M3.5 x 12mm screws

2 Wire the reader



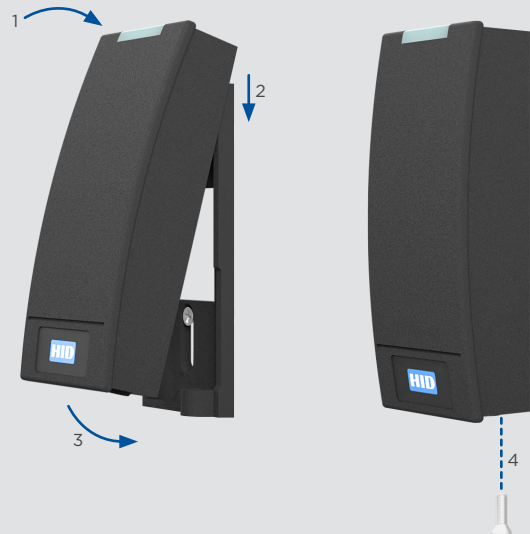
9" (0.23m)

PIGTAIL	DESCRIPTION
Yellow	Beeper Input
Orange	LED Input (GRN)
Black	Ground (RTN)
Red	+VDC
Drain	Unused
Violet	*Tamper #1
Violet/White	*Tamper #2
White	Wiegand Data 1
Green	Wiegand Data 0

* Tamper Output. When activated or when the reader is unpowered, the circuit between Tamper#1 and Tamper#2 reader control lines will open.

Note: Wiring the reader incorrectly may permanently damage the reader.

3 Secure the reader to the backplate



- Align the top of the reader with the top of the backplate.
- Hook the top of the reader on the top of the backplate.
- Align the bottom of reader with the bottom of the backplate.
- Secure the reader to the backplate using one of the supplied screws:

Security/non-tamper screw: 0.138-32 x 0.375" screw (supplied)
Non-security/standard screw: 0.138-32 x 0.375" screw (supplied)

4 Power and test the reader



Turn on the power.
The reader should beep and the
light bar should flash.



Test the reader with a card.
The reader should beep and the
light bar should flash.

Specifications

INPUT VOLTAGE (VDC)	12 VDC
CURRENT	
STANDBY AVG ¹	46 mA
MAX AVG ²	60 mA
PEAK ³	250 mA
OPERATING TEMPERATURE	-30° F to 150° F (-35° C to 66° C)
CABLE LENGTH ⁴	Communication Lines (Wiegand) 22 AWG: 500 ft (152 m)
REGULATORY REF NUMBER	R10FKNN
FREQUENCY	BLE: 2.4 - 2.480 GHz, HF: 13.56 MHz
FCC & IC IDS	FCC-ID: JQ6-iCLASSR10F, IC-ID: 2236B-iCLASSR10F

¹ Standby AVG - RMS current draw without a card in the RF field.
² Maximum AVG - RMS current draw during continuous card reads. Not evaluated by UL.
³ Peak - highest instantaneous current draw during RF communication.
⁴ Wiegand Cable Lengths: 500 ft (152 m) 22 AWG @ STANDBY AVG 46 mA, MAX AVG 62.5 mA, PEAK 250 mA

Regulatory

UL
Connect only to a Listed Access Control / Burglary power-limited power supply. These readers are intended to be used with listed (UL294) control equipment. Suitable for outdoor use.
Only Wiegand and Bluetooth communications have been evaluated by UL.
iCLASS SE readers are compatible with HID Mobile Access® version 3.0.0 and later using mobile devices with BLE version 4.2 and later listed at:
<https://www.hidglobal.com/mobile-access-compatible-devices>.

Install in accordance with NFPA70 (NEC) Local Codes, and authorities having jurisdiction. Follow all National and Local Codes.
UL 294 Performance Levels

Model #	Access Control Line Security Level	Destructive Attack Level	Endurance Level	Stand-by Power Level	Conditions
R10F	Level I	Level I	Level IV	Level I	

FCC

This device complies with part 15 of the FCC Rules. Operation is subject to the following two conditions:
(1) This device may not cause harmful interference, and (2) this device must accept any interference received, including interference that may cause undesired operation.
CAUTION: Any changes or modifications to this device not explicitly approved by the manufacturer could void your authority to operate this equipment.
This equipment has been tested and found to comply with the limits for a Class B digital device, pursuant to part 15 of the FCC Rules. These limits are designed to provide reasonable protection against harmful interference in a residential installation. This equipment generates, uses and can radiate radio frequency energy and, if not installed and used in accordance with the instructions, may cause harmful interference to radio communications. However, there is no guarantee that interference will not occur in a particular installation. If this equipment does cause harmful interference to radio or television reception, which can be determined by turning the equipment off and on, the user is encouraged to try to correct the interference by one or more of the following measures:

- Reorient or relocate the receiving antenna.
- Increase the separation between the equipment and receiver.
- Connect the equipment into an outlet on a circuit different from that to which the receiver is connected.
- Consult the dealer or an experienced radio/TV technician for help.

Canada Radio Certification

This device complies with Industry Canada license-exempt RSS standard(s). Operation is subject to the following two conditions: (1) this device may not cause interference, and (2) this device must accept any interference, including interference that may cause undesired operation of the device.
Le présent appareil est conforme aux CNR d'Industrie Canada applicables aux appareils radio exempts de licence. L'exploitation est autorisée aux deux conditions suivantes : (1) l'appareil ne doit pas produire de brouillage, et (2) l'utilisateur de l'appareil doit accepter tout brouillage radioélectrique subi, même si le brouillage est susceptible d'en compromettre le fonctionnement.

CE Marking

HID Global hereby declares that these proximity readers are in compliance with the essential requirements and other relevant provisions of Directive 2014/53/EU.
Por el presente, HID Global declara que estos lectores de proximidad cumplen con los requisitos esenciales y otras disposiciones relevantes de la Directiva 2014/53/EU.
HID Global déclare par la présente que ces lecteurs à proximité sont conformes aux exigences essentielles et aux autres stipulations pertinentes de la Directive 2014/53/EU.
A HID Global, por meio deste, declara que estes leitores de proximidade estão em conformidade com as exigências essenciais e outras condições da diretiva 2014/53/EU.
HID Global bestätigt hiermit, dass die Leser die wesentlichen Anforderungen und anderen relevanten Bestimmungen der Richtlinie 2014/53/EU erfüllen.
HID Global dichiara che i lettori di prossimità sono conformi ai requisiti essenziali e ad altre misure rilevanti come previsto dalla Direttiva europea 2014/53/EU.
Download copies of the Radio Equipment Directive (RED) Declaration of Conformity (DoC) at: <http://www.hidglobal.com/certifications>

Taiwan

According to "Administrative Regulations on Low Power Radio Waves Radiated Devices" Without permission granted by the NCC, any company, enterprise, or user is not allowed to change frequency, enhance transmitting power or alter original characteristic as well as performance to an approved low power radio-frequency device. The low power radio-frequency devices shall not influence aircraft security and interfere legal communications; If found, the user shall cease operating immediately until no interference is achieved. The said legal communications means radio communications is operated in compliance with the Telecommunications Act. The low power radio-frequency devices must be susceptible with the interference from legal communications or ISM radio wave radiated devices.

Korean KCC

	R10F
항목	규격
송신주파수	RFID:13.56 MHz, BLE 2.4 -2.48GHz
수신주파수	RFID:13.56 MHz, BLE 2.4 -2.48GHz
출력	RFID: 10m에서 47.544mV이하
전원	DC 12.0V
전파형식	A1D
발진방식	X-tal
변조방식	RFID: ASK, NFC: GFSK

Russia EAC

Дата изготовления указана на маркировке оборудования

Представитель в Российской Федерации	
Название	ООО «Дофин»
Адрес	140573, РФ, Московская обл., Озерский район, с. Бояркино
Контактное лицо	Л.Н. Голубова
Телефон	+7 495 223 6008
e-mail	local.declarant@gmail.com

Japan MIC

“この装置は総務省の型式指定を受けています。”
(総務省指定番号は第AC-x x x x x号です)
本製品は電波を使用したRFID 機器の読み取り・書き込み装置です。
そのため使用する用途・場所によっては、医療機器に影響を与える恐れがあります

Japan Giteki for BLE



Israel

יטוחלא הלעפּה וויישרמ רוטפו "ינשמ" סיטב לע וניא רישכמב שומישה
יטוחלא הלעפּה וויישרמ רוטפ חוקלה, דבלב חוקלה לש ימצע שומישל "קוב תלועפב" קר
רחא ינכט יוניש לב וב תושעל אלו, רישכמה לש תירוקמה הנטנאה תא פילחלה רוטא

Brazil

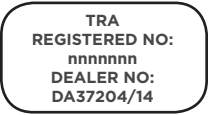
Compliance Statement
Este produto está homologado pela ANATEL, de acordo com os procedimentos regulamentados pela Resolução 242/2000, e atende aos requisitos técnicos aplicados. Para maiores informações, consulte o site da ANATEL - www.anatel.gov.br
This product is homologated at ANATEL according to procedure regulated by Resolution 242/2000, and it complies with the applicable technical requirements. For more information, consult ANATEL website - www.anatel.gov.br

RF Warning Statement

Per Article 6 of Resolution 506, equipment of restricted radiation must carry the following statement in a visible location:
Este equipamento opera em caráter secundário, isto é, não tem direito a proteção contra interferência prejudicial, mesmo de estações do mesmo tipo, e não pode causar interferência a sistemas operando em caráter primário.
This equipment operates in secondary character, meaning it does not have the right of protection against harmful interference, even against those the same character, and it cannot cause any interference to systems operating in the primary character.



UAE



Singapore



Indonesia



South Africa



Australia and New Zealand



HID Global

Americas & Corporate 611 Center Ridge Drive Austin, TX 78758 USA Support: 866-607-7339 Fax: 949-732-2120	Asia Pacific 19/F 625 King's Road North Point, Island East Hong Kong Support: 852-3160-9833 Fax: 852-3160-4809	Europe, Middle East & Africa Phoenix Road Haverhill, Suffolk CB9 7AE United Kingdom Support: 44 (0) 1440 711 822 Fax: 44 (0) 1440 714 840	Brazil Condomínio Business Center Av. Ermano Marchetti, 1435 Galpão A2 - CEP 05038-001 Lapa - São Paulo / SP Brazil Phone: +55 11 5514-7100
--	--	---	--

