

Photographs of the Device

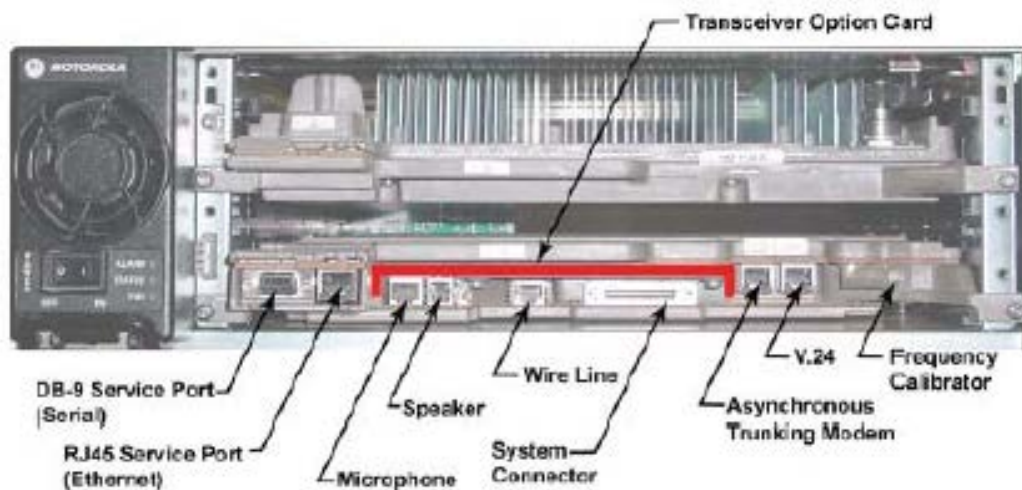
*Internal Front View – Transceiver Module*



Transceiver Module without the Transceiver Option Card (TOC)



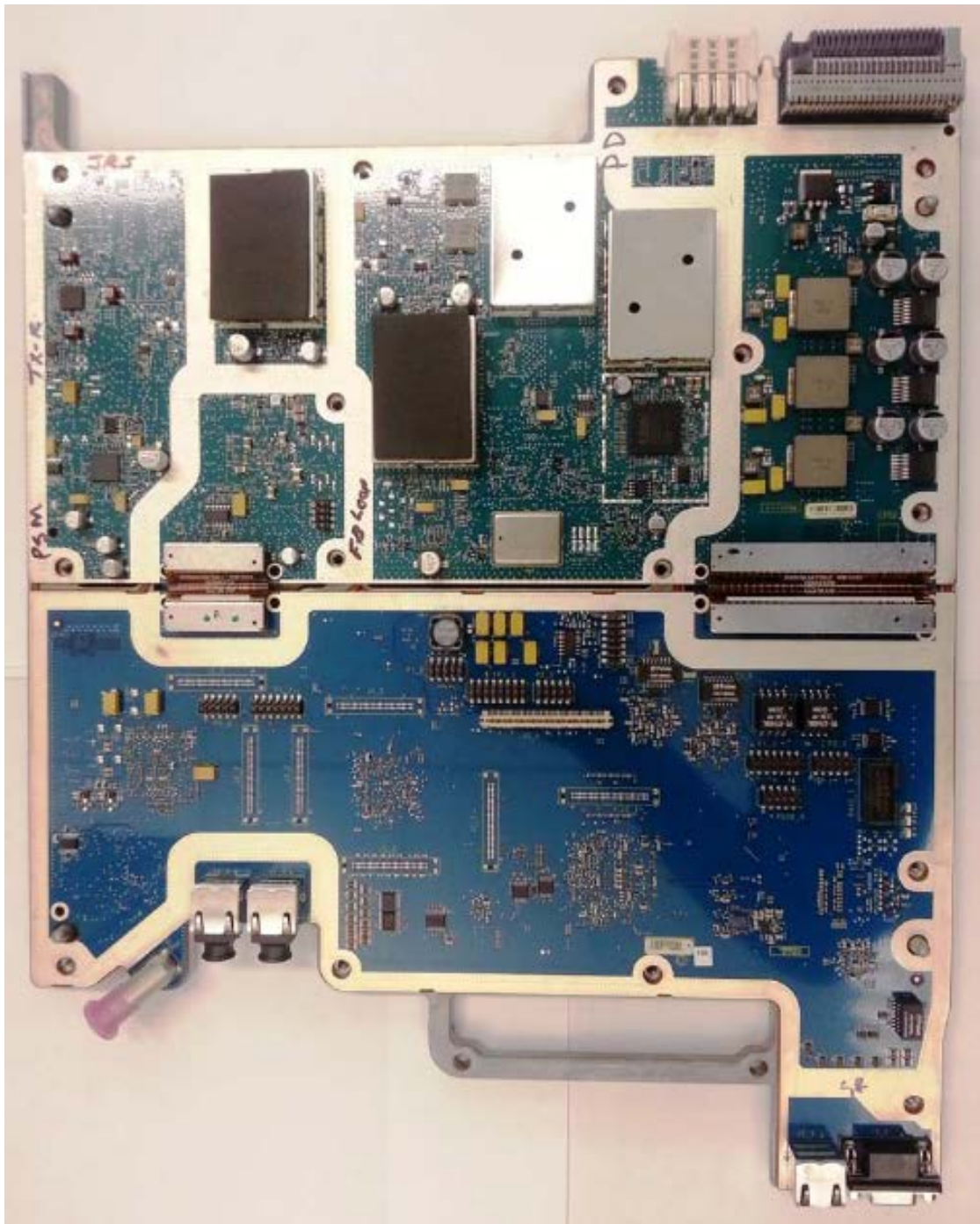
Transceiver Module with the Transceiver Option Card (TOC) Installed



Front View of Base Radio Showing Transceiver Module with TOC Installed and Identifying Connections

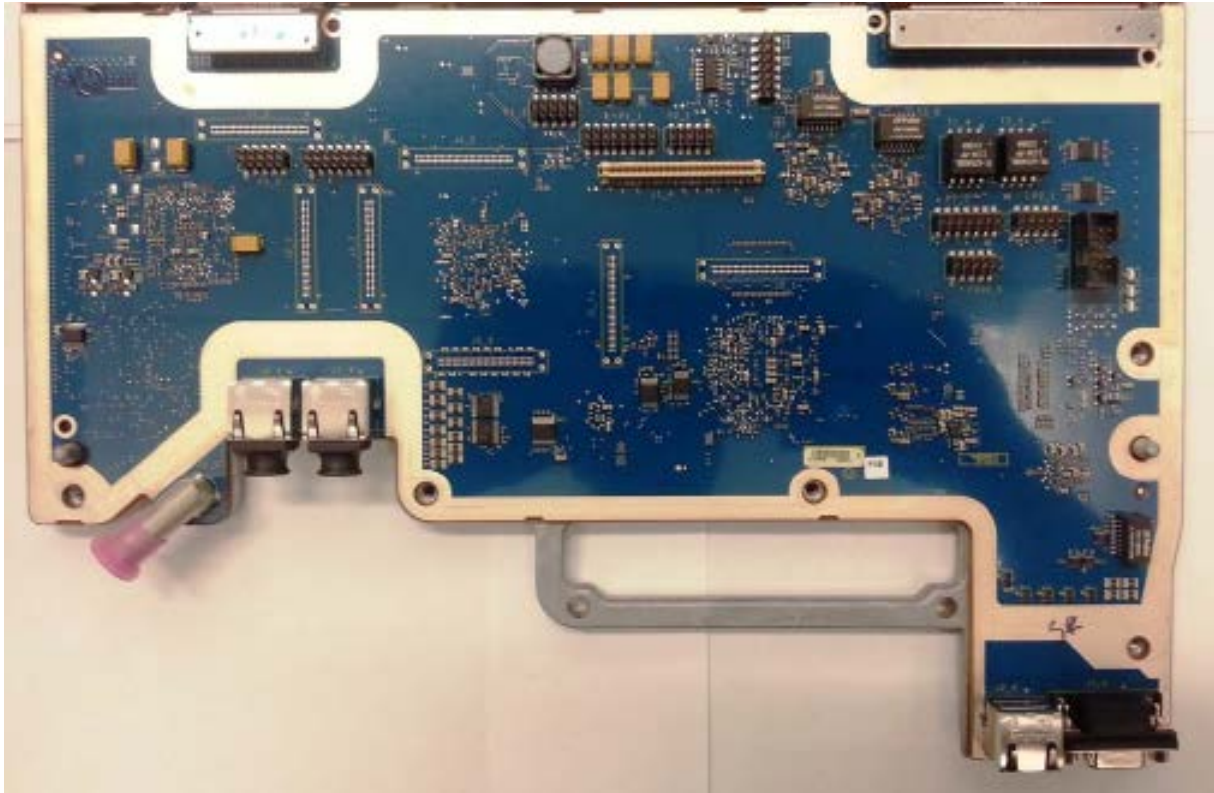
Photographs of the Device

*Internal Front View – Transceiver Module Circuit Board Top View*



Photographs of the Device

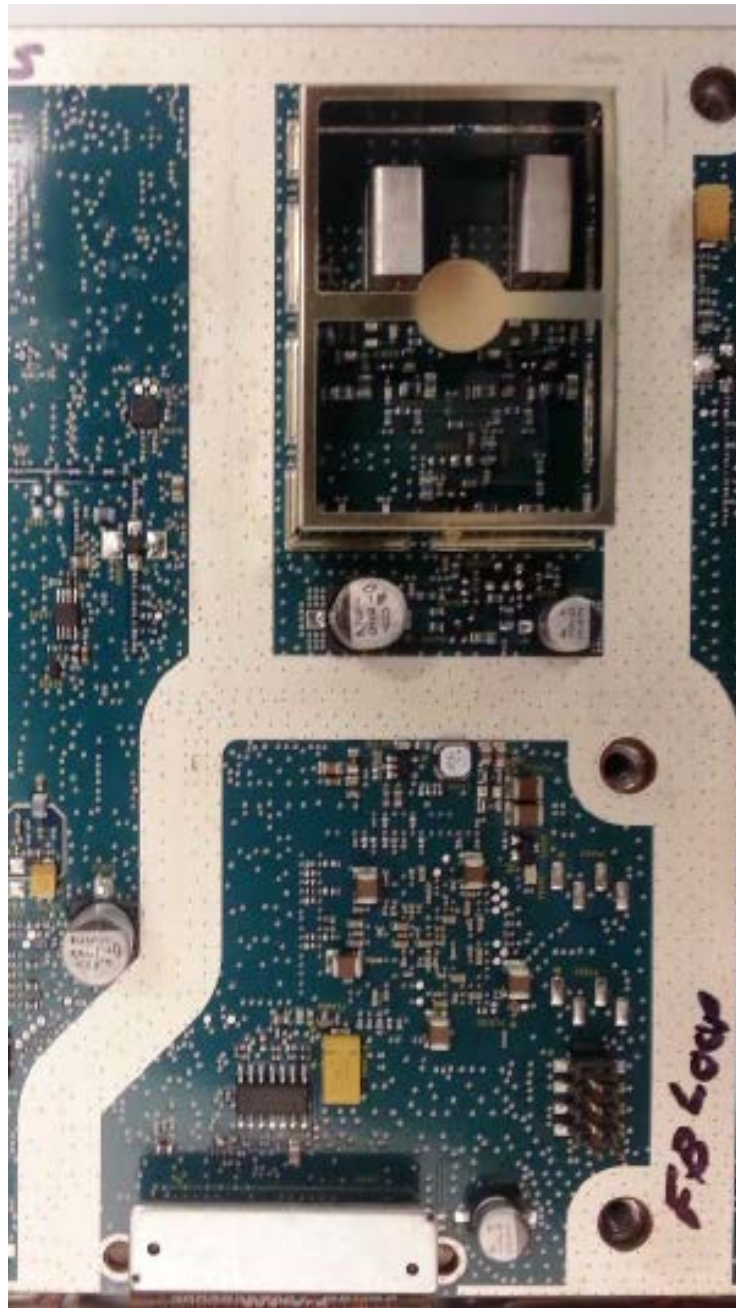
*Internal Front View – Transceiver Module, Control Section*





Photographs of the Device

Internal Front View – Transceiver Module, Exciter Section



Photographs of the Device

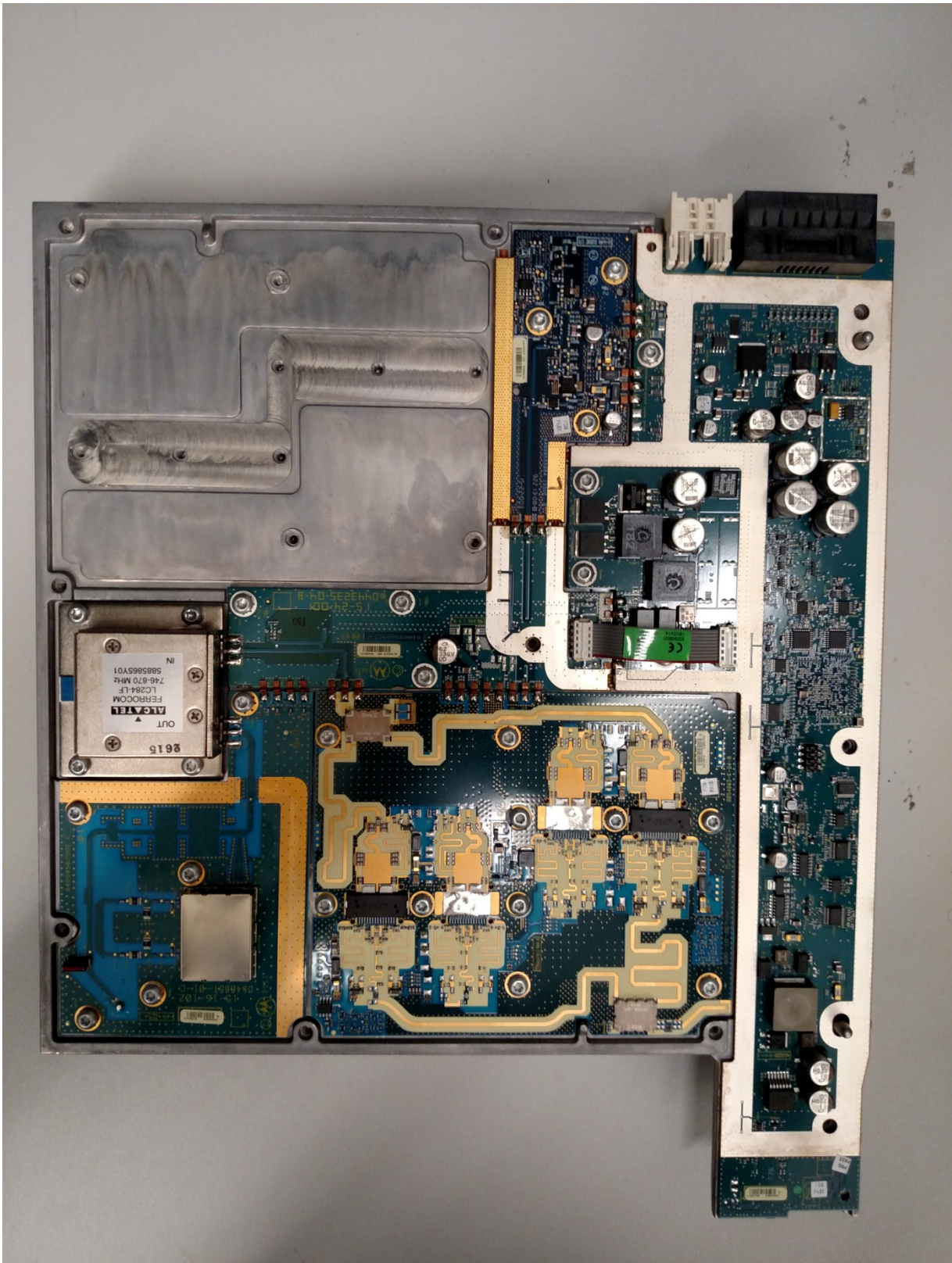
*Internal Front View – Transceiver Module, Receiver Section*





Photographs of the Device

*Internal Front View – Power Amplifier Module – Cover Removed*



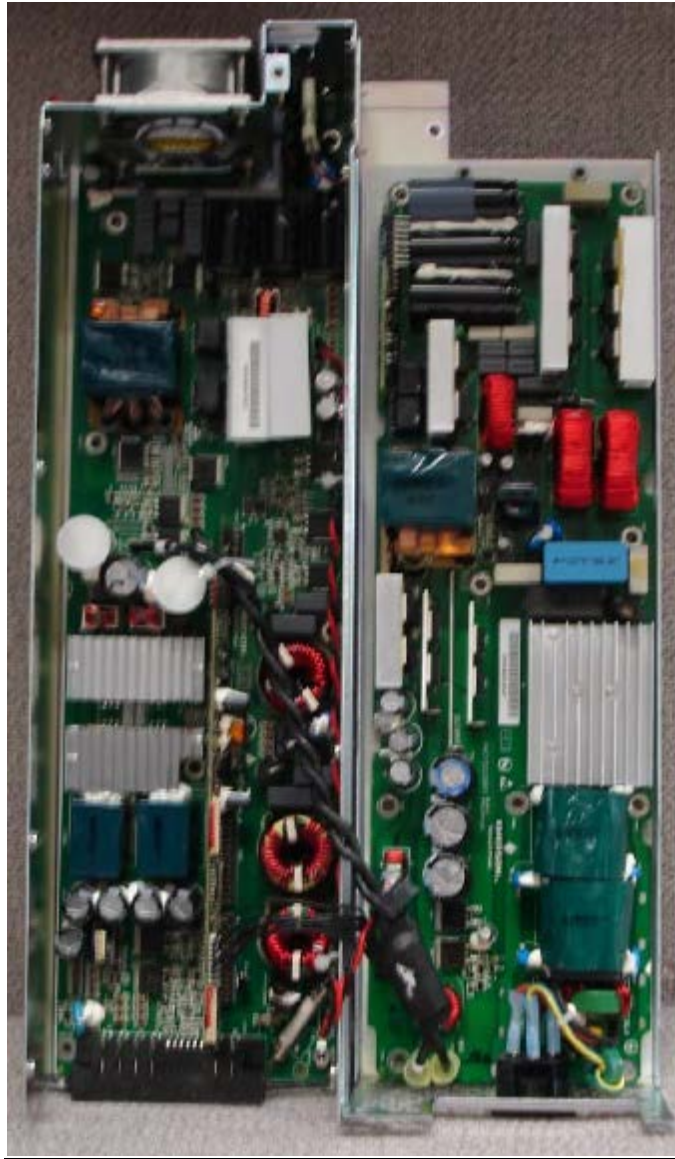
Photographs of the Device

*Internal Front View – Power Supply Module*



**Photographs of the Device**

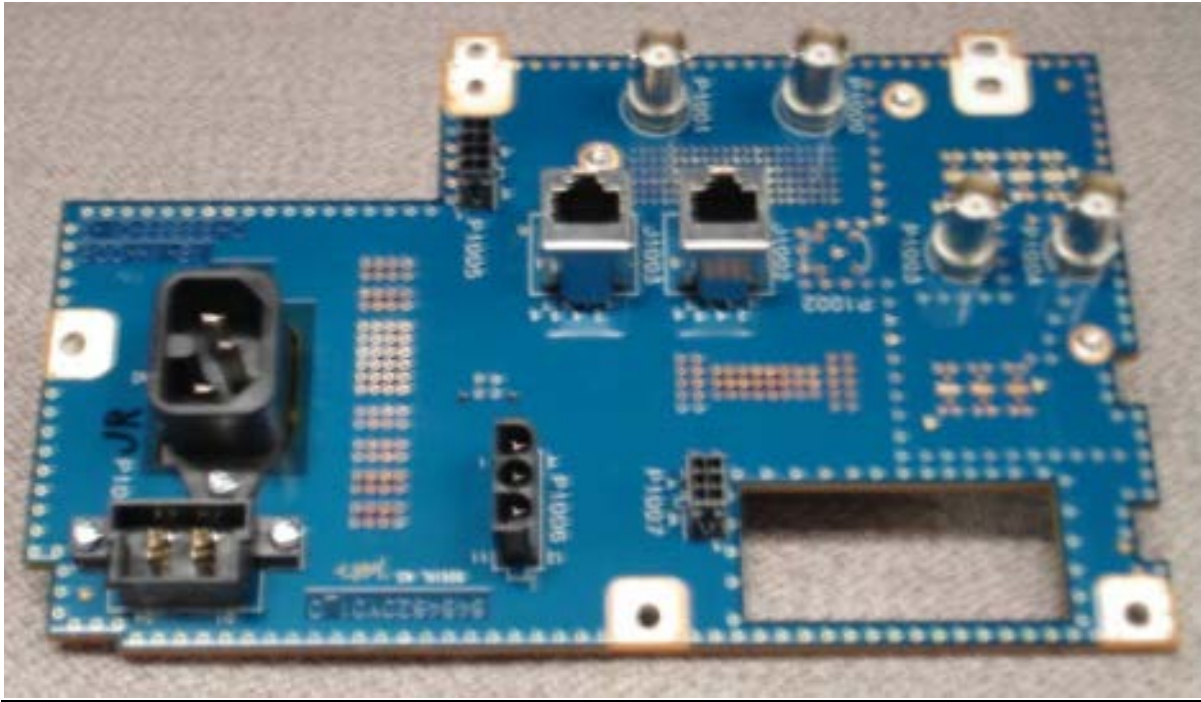
*Internal Front View – Power Supply Module, Circuit Boards, Top View*





Photographs of the Device

*Internal Front View – Backplane*



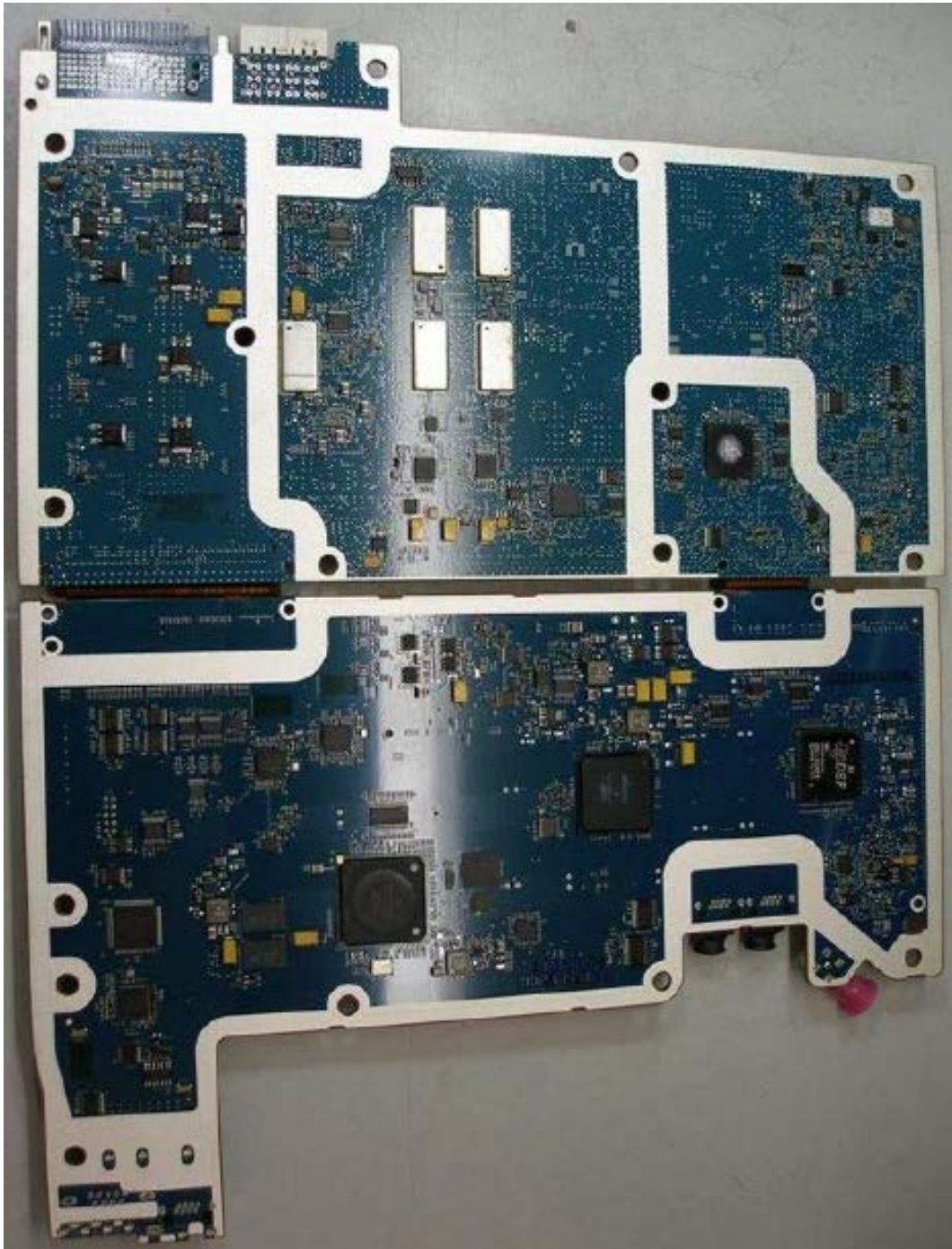
**Photographs of the Device**

*Internal Front View – Transceiver Option Card (TOC)*



Photographs of the Device

*Internal Back View – Transceiver Module*





**Photographs of the Device**

*Internal Back View – Power Amplifier Module*



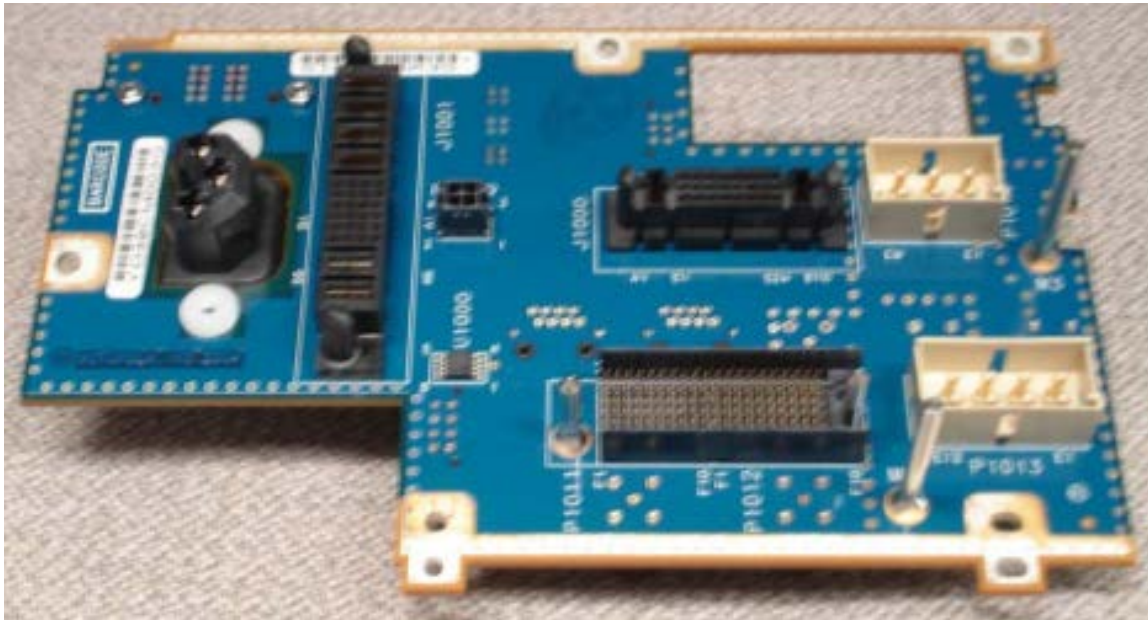
**Photographs of the Device**

*Internal Back View – Power Supply Module, Circuit Boards, Back View*



Photographs of the Device

*Internal Back View – Backplane*





**Photographs of the Device**

*Internal Back View – Transceiver Option Card (TOC)*

