

Shenzhen Monster Creative Technology Co., Ltd.

Add: Room 1602, Building A, Fencheng Zhigu Building, Xixiang Street, Bao 'an District,
Shenzhen, Guangdong, China

Date: 2025-3-21

FCC ID: 2AVD2-MH22232

Dear Sir/Madam,

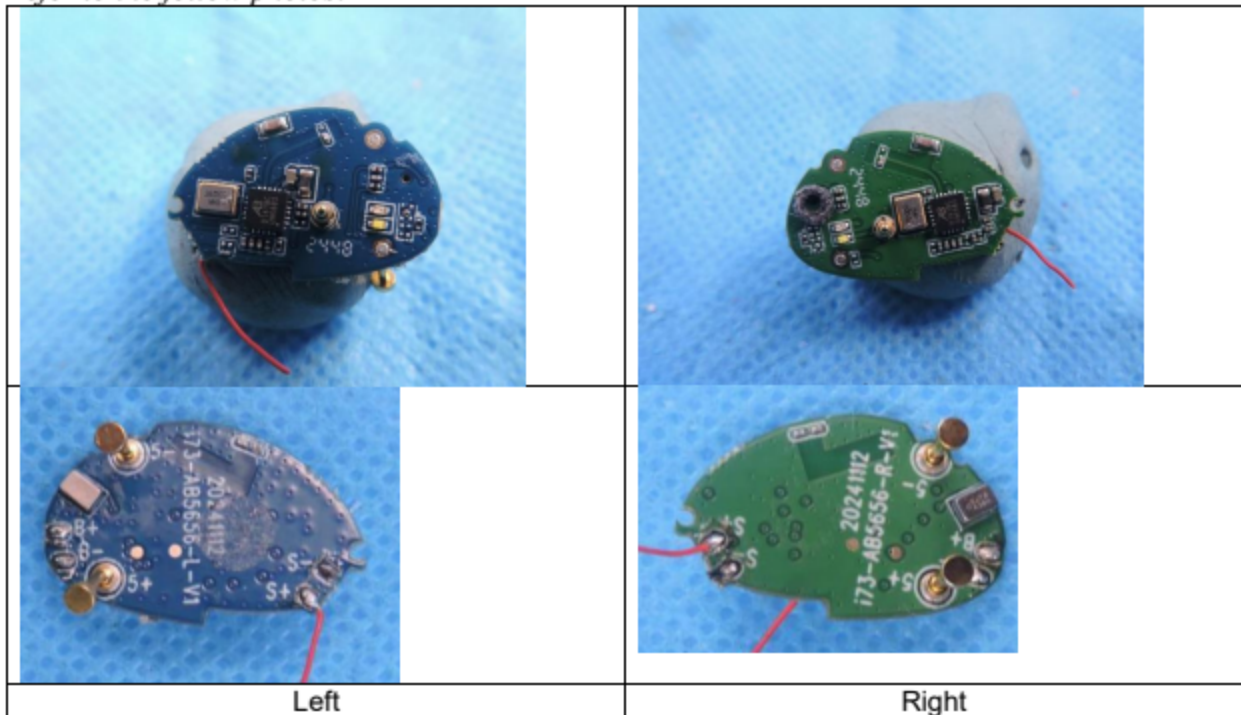
*We, **Shenzhen Monster Creative Technology Co., Ltd.** Hereby declares the following statement for Federal Communications Commission, PCB board, circuit, structure and internal of these models are same, Only model number is different for these models:*

Product name: BLUETOOTH HEADPHONE

Model no.: MH22232, E93

Additionally, for each model above, the left&right earphones are the same schematic circuits, but the locations of components are different.

Refer to the follow photos:



Shenzhen Monster Creative Technology Co., Ltd.

*Add: Room 1602, Building A, Fencheng Zhigu Building, Xixiang Street, Bao 'an District,
Shenzhen, Guangdong, China*

Sincerely,

Wang run long

Name/Title : run long wang/R & D Manager
Company: Shenzhen Monster Creative Technology Co., Ltd.
Address: Room 1602, Building A, Fencheng Zhigu Building, Xixiang Street, Bao
'an District, Shenzhen, Guangdong, China
Phone: 86-0755-27364448
Fax: 86-0755-27364448
E-Mail: msbuyer_lbh@monster-china.com