

## WiFi 2.4GHz

Frequency: 2412 MHz; Duty Cycle: 1:1; Room Ambient Temperature: 24.0°C; Liquid Temperature: 23.0°C

Medium parameters used (interpolated):  $f = 2412$  MHz;  $\sigma = 1.819$  S/m;  $\epsilon_r = 38.893$ ;  $\rho = 1000$  kg/m<sup>3</sup>

DASY5 Configuration:

- Area Scan Setting: Find Secondary Maximum Within: 2.0 dB and with a peak SAR value greater than 0.0012W/kg
- Electronics: DAE3 Sn500; Calibrated: 5/22/2015
- Probe: EX3DV4 - SN7356; ConvF(7.89, 7.89, 7.89); Calibrated: 4/22/2015;
- Sensor-Surface: 2.5mm (Mechanical Surface Detection (Locations From Previous Scan Used)), Sensor-Surface: 2.5mm (Mechanical Surface Detection)
- Phantom: SAM with CRP (Wi-Fi 5 GHz); Type: QD000P40CD; Serial: TP:xxxx

### RHS/Touch\_802.11b\_ch 1/Area Scan (10x17x1): Measurement grid: dx=12mm, dy=12mm

[Info: Interpolated medium parameters used for SAR evaluation.](#)

Maximum value of SAR (measured) = 0.369 W/kg

### RHS/Touch\_802.11b\_ch 1/Zoom Scan (7x7x7)/Cube 0: Measurement grid: dx=5mm, dy=5mm, dz=5mm

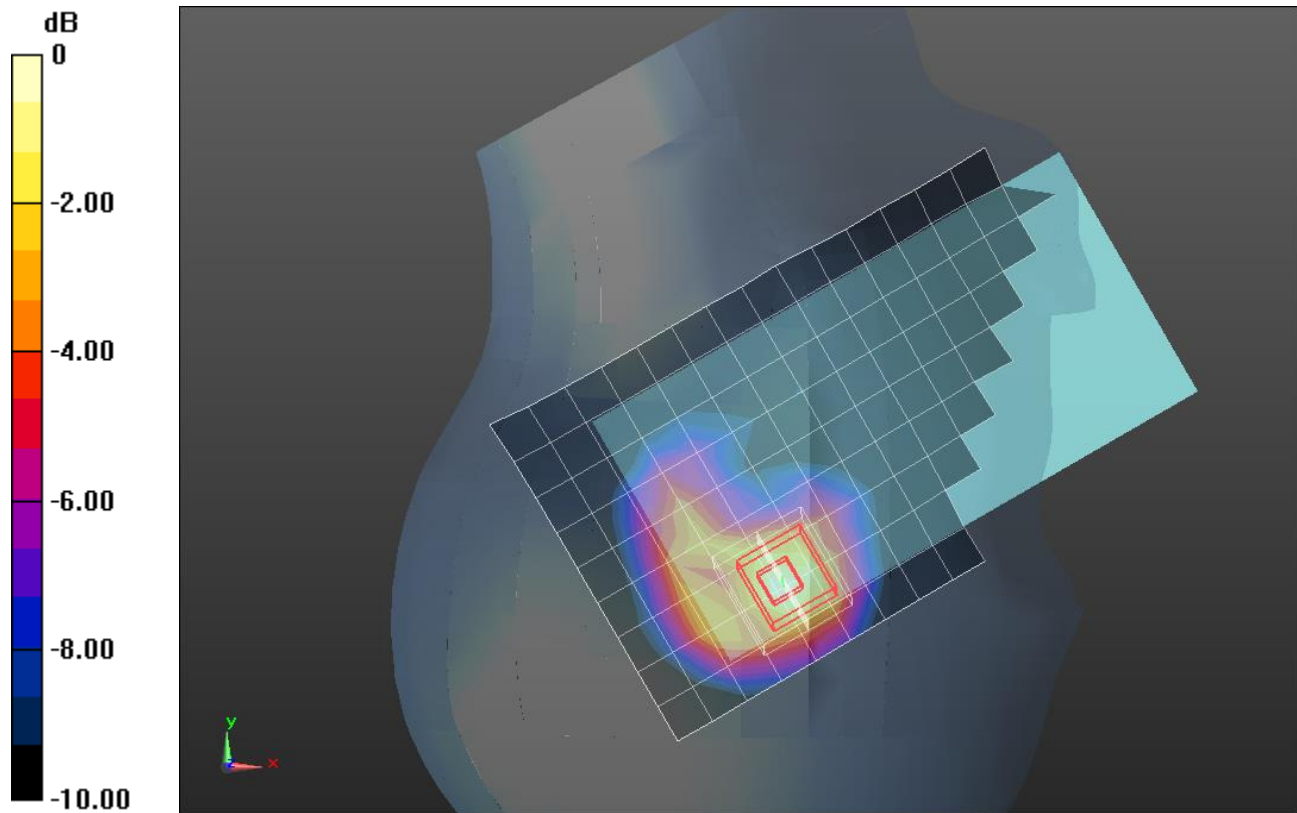
Reference Value = 13.844 V/m; Power Drift = -0.00 dB

Peak SAR (extrapolated) = 0.531 W/kg

**SAR(1 g) = 0.269 W/kg; SAR(10 g) = 0.128 W/kg**

[Info: Interpolated medium parameters used for SAR evaluation.](#)

Maximum value of SAR (measured) = 0.367 W/kg



0 dB = 0.367 W/kg = -4.35 dBW/kg

## Wi-Fi 2.4GHz

Frequency: 2437 MHz; Duty Cycle: 1:1; Room Ambient Temperature: 24.0°C; Liquid Temperature: 23.0°C

Medium parameters used (interpolated):  $f = 2437$  MHz;  $\sigma = 1.954$  S/m;  $\epsilon_r = 51.069$ ;  $\rho = 1000$  kg/m<sup>3</sup>

DASY5 Configuration:

- Area Scan Setting: Find Secondary Maximum Within: 2.0 dB and with a peak SAR value greater than 0.0012W/kg
- Electronics: DAE3 Sn500; Calibrated: 5/22/2015
- Probe: EX3DV4 - SN7356; ConvF(7.54, 7.54, 7.54); Calibrated: 4/22/2015;
- Sensor-Surface: 2.5mm (Mechanical Surface Detection)
- Phantom: ELI-A v5.0; Type: QDOVA002AA; Serial: TP 1194

**Rear/802.11b\_ch 6/Area Scan (10x18x1):** Measurement grid: dx=12mm, dy=12mm

[Info: Interpolated medium parameters used for SAR evaluation.](#)

Maximum value of SAR (measured) = 0.0861 W/kg

**Rear/802.11b\_ch 6/Zoom Scan (7x7x7)/Cube 0:** Measurement grid: dx=5mm, dy=5mm, dz=5mm

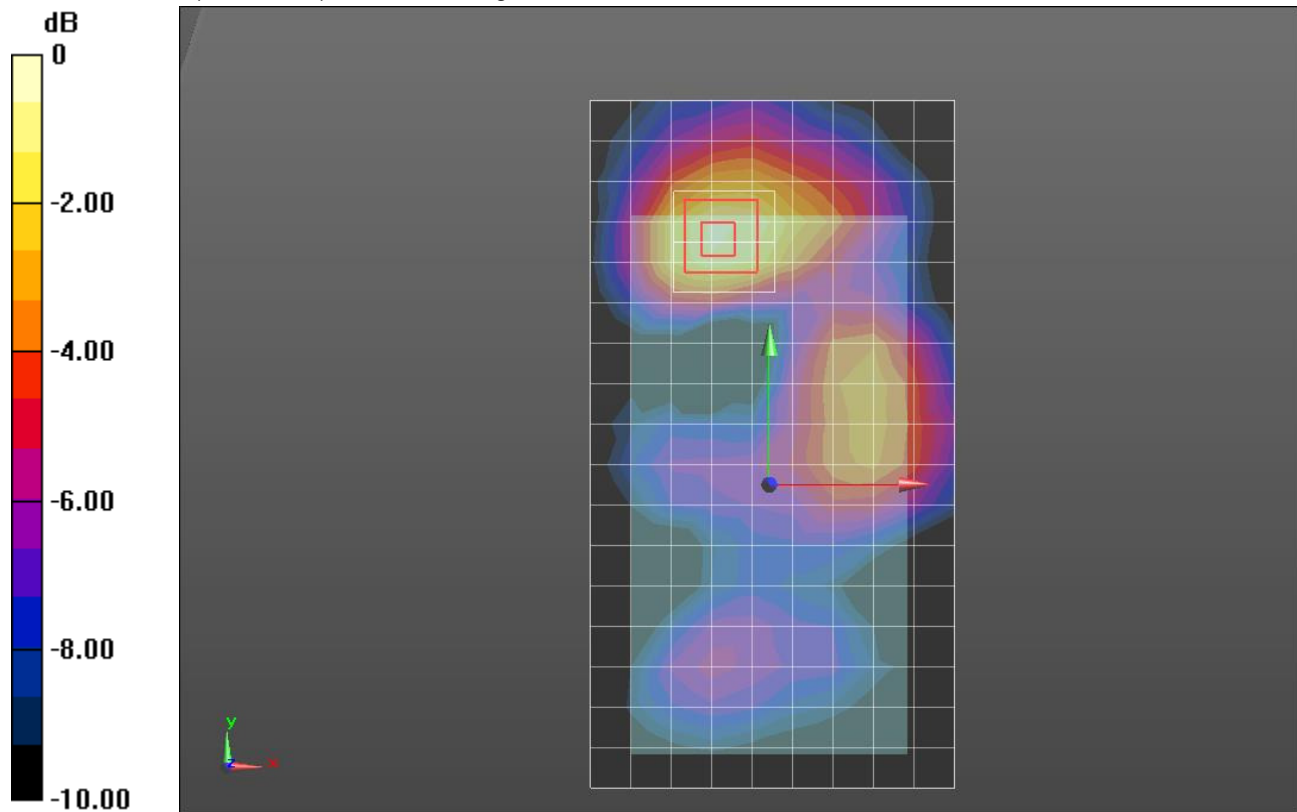
Reference Value = 6.703 V/m; Power Drift = 0.18 dB

Peak SAR (extrapolated) = 0.136 W/kg

**SAR(1 g) = 0.073 W/kg; SAR(10 g) = 0.040 W/kg**

[Info: Interpolated medium parameters used for SAR evaluation.](#)

Maximum value of SAR (measured) = 0.0966 W/kg



0 dB = 0.0966 W/kg = -10.15 dBW/kg

## Wi-Fi 2.4GHz

Frequency: 2412 MHz; Duty Cycle: 1:1; Room Ambient Temperature: 24.0°C; Liquid Temperature: 23.0°C

Medium parameters used (interpolated):  $f = 2412$  MHz;  $\sigma = 1.923$  S/m;  $\epsilon_r = 51.151$ ;  $\rho = 1000$  kg/m<sup>3</sup>

DASY5 Configuration:

- Area Scan Setting: Find Secondary Maximum Within: 2.0 dB and with a peak SAR value greater than 0.0012W/kg
- Electronics: DAE3 Sn500; Calibrated: 5/22/2015
- Probe: EX3DV4 - SN7356; ConvF(7.54, 7.54, 7.54); Calibrated: 4/22/2015;
- Sensor-Surface: 2.5mm (Mechanical Surface Detection (Locations From Previous Scan Used)), Sensor-Surface: 2.5mm (Mechanical Surface Detection)
- Phantom: ELI-A v5.0; Type: QDOVA002AA; Serial: TP 1194

**Rear/802.11b\_ch 1\_0mm/Area Scan (10x18x1):** Measurement grid: dx=12mm, dy=12mm

[Info: Interpolated medium parameters used for SAR evaluation.](#)

Maximum value of SAR (measured) = 0.792 W/kg

**Rear/802.11b\_ch 1\_0mm/Zoom Scan (7x7x7)/Cube 0:** Measurement grid: dx=5mm, dy=5mm, dz=5mm

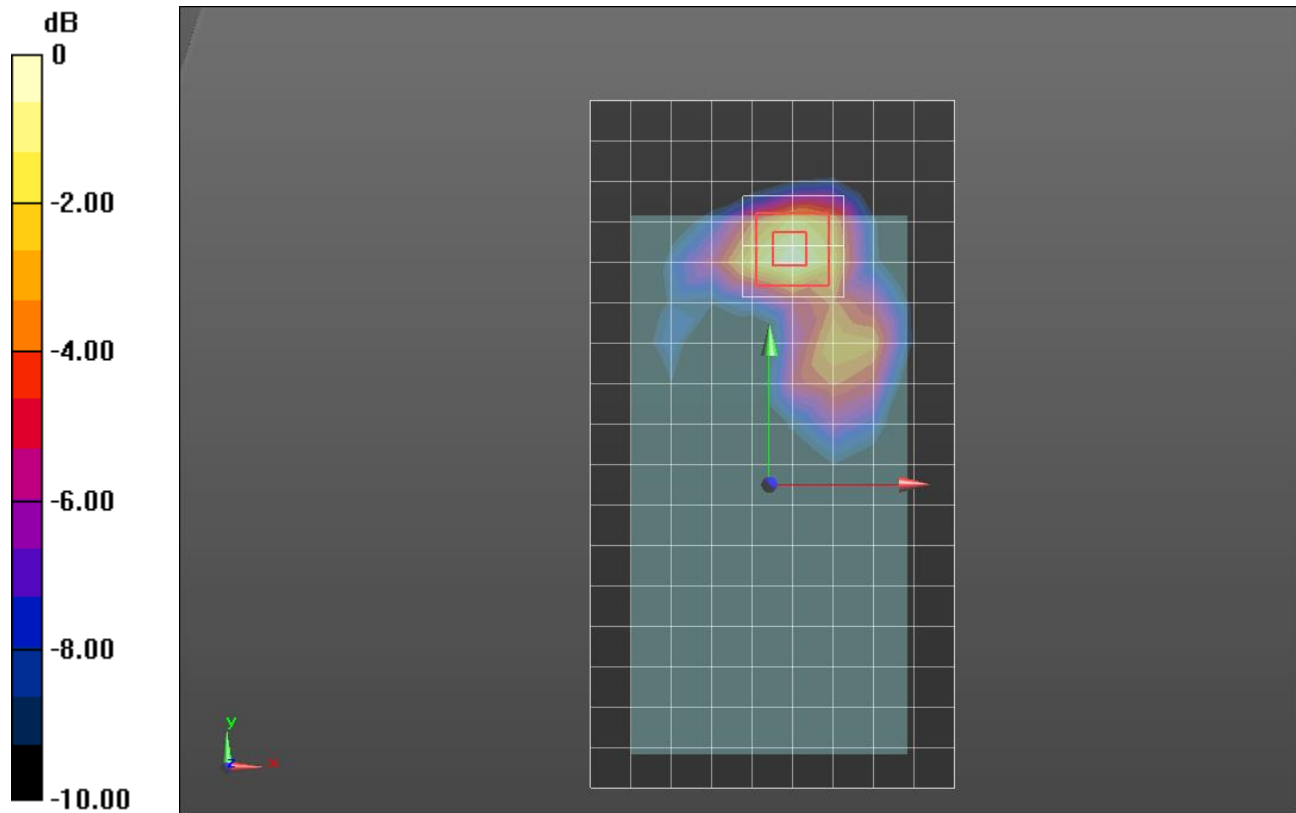
Reference Value = 19.393 V/m; Power Drift = 0.05 dB

Peak SAR (extrapolated) = 1.11 W/kg

**SAR(1 g) = 0.559 W/kg; SAR(10 g) = 0.263 W/kg**

[Info: Interpolated medium parameters used for SAR evaluation.](#)

Maximum value of SAR (measured) = 0.785 W/kg



0 dB = 0.785 W/kg = -1.05 dBW/kg

## Wi-Fi 5GHz

Frequency: 5290 MHz; Duty Cycle: 1:1; Room Ambient Temperature: 24.0°C; Liquid Temperature: 23.0°C

Medium parameters used:  $f = 5290$  MHz;  $\sigma = 4.778$  S/m;  $\epsilon_r = 34.733$ ;  $\rho = 1000$  kg/m<sup>3</sup>

DASY5 Configuration:

- Area Scan Setting: Find Secondary Maximum Within: 2.0 dB and with a peak SAR value greater than 0.0012W/kg
- Electronics: DAE4 Sn1258; Calibrated: 5/14/2015
- Probe: EX3DV4 - SN3989; ConvF(5.3, 5.3, 5.3); Calibrated: 3/17/2015;
- Sensor-Surface: 2mm (Mechanical Surface Detection)
- Phantom: SAM with CRP; Type: SAM;

**RHS/Touch\_802.11ac VHT80\_Ch 58/Area Scan (11x20x1):** Measurement grid: dx=10mm, dy=10mm  
Maximum value of SAR (measured) = 0.370 W/kg

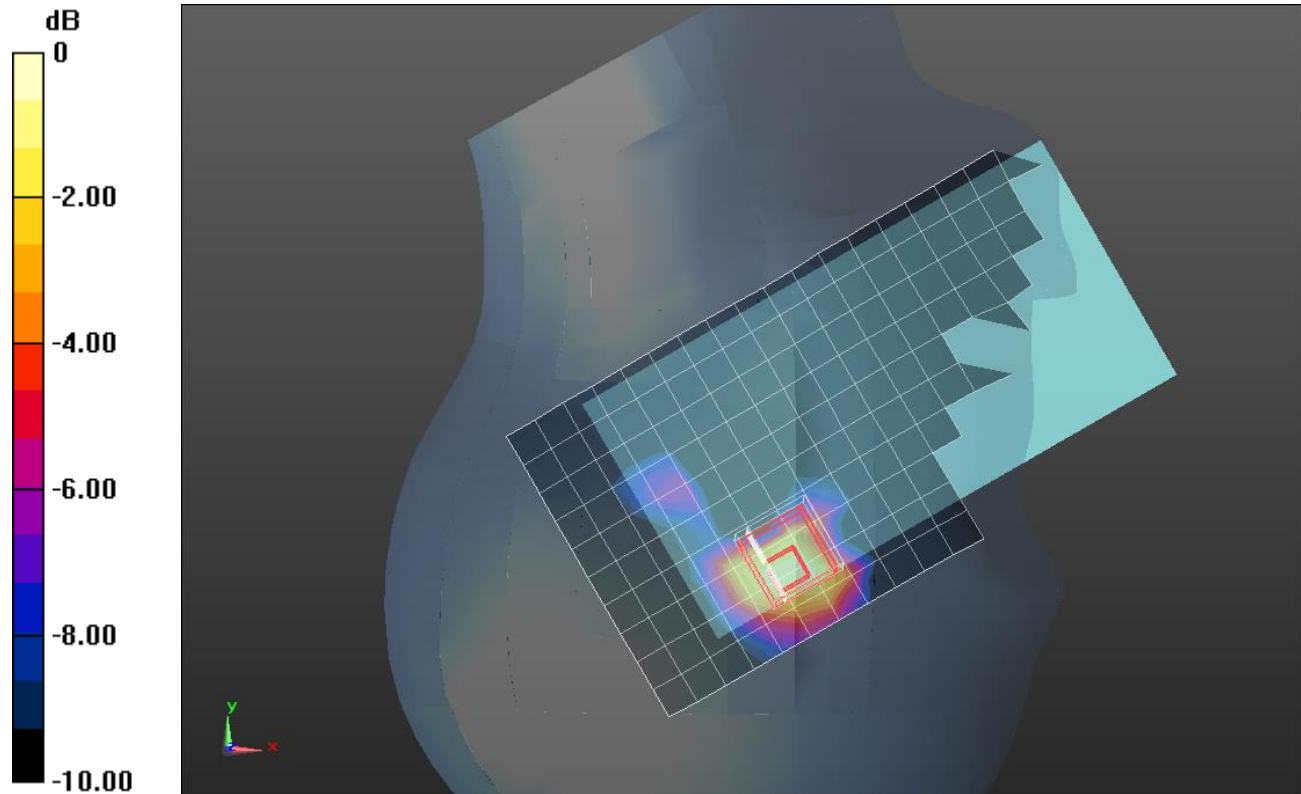
**RHS/Touch\_802.11ac VHT80\_Ch 58/Zoom Scan (7x7x12)/Cube 0:** Measurement grid: dx=4mm, dy=4mm, dz=2mm

Reference Value = 8.978 V/m; Power Drift = 0.11 dB

Peak SAR (extrapolated) = 0.863 W/kg

**SAR(1 g) = 0.235 W/kg; SAR(10 g) = 0.084 W/kg**

Maximum value of SAR (measured) = 0.426 W/kg



0 dB = 0.426 W/kg = -3.71 dBW/kg

## WiFi 5GHz

Frequency: 5290 MHz; Duty Cycle: 1:1; Room Ambient Temperature: 24.0°C; Liquid Temperature: 23.0°C

Medium parameters used:  $f = 5290$  MHz;  $\sigma = 5.542$  S/m;  $\epsilon_r = 47.317$ ;  $\rho = 1000$  kg/m<sup>3</sup>

DASY5 Configuration:

- Area Scan Setting: Find Secondary Maximum Within: 2.0 dB and with a peak SAR value greater than 0.0012W/kg
- Electronics: DAE4 Sn1258; Calibrated: 5/14/2015
- Probe: EX3DV4 - SN3989; ConvF(4.77, 4.77, 4.77); Calibrated: 3/17/2015;
- Sensor-Surface: 2mm (Mechanical Surface Detection)
- Phantom: ELI A (v5.0); Type: QDOVA001BB; Serial: S/n:1212

**Rear/802.11ac VHT80\_Ch 58/Area Scan (12x19x1):** Measurement grid: dx=10mm, dy=10mm

Maximum value of SAR (measured) = 0.342 W/kg

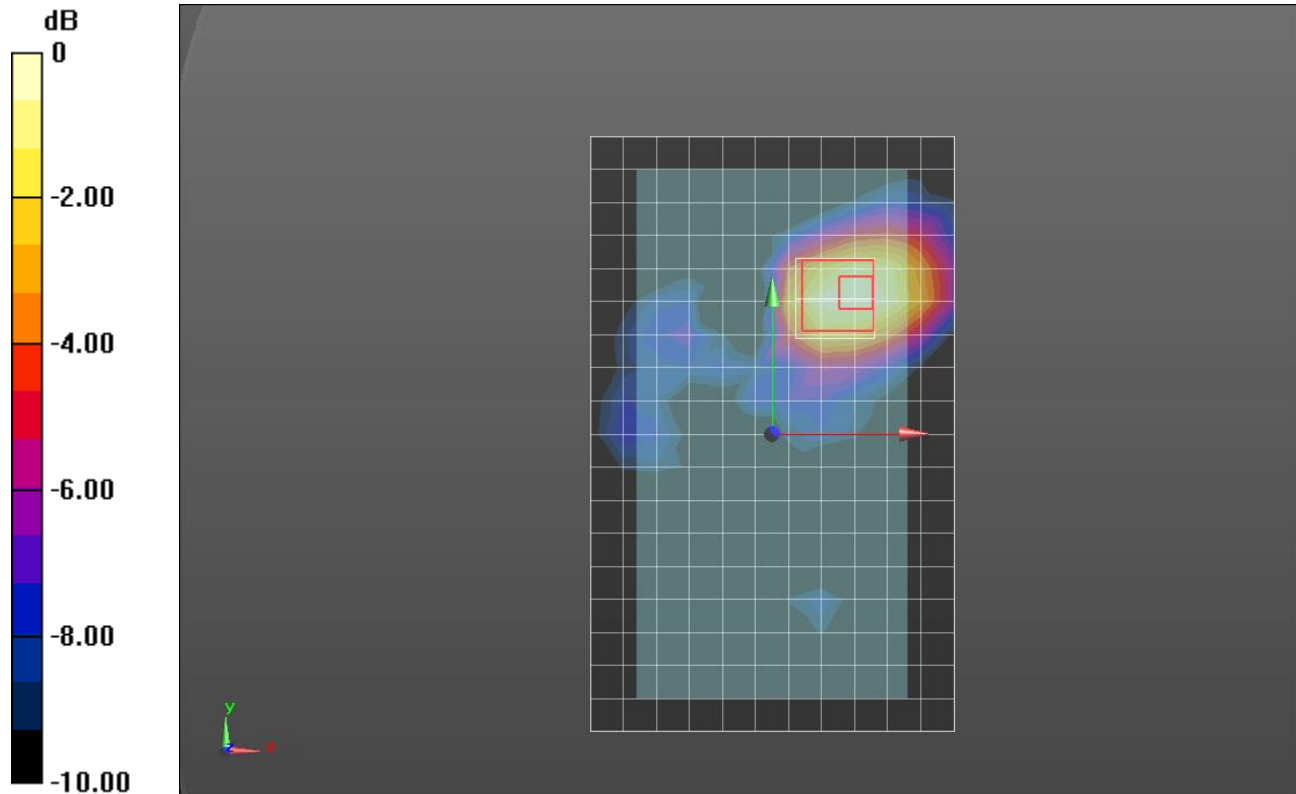
**Rear/802.11ac VHT80\_Ch 58/Zoom Scan (7x7x12)/Cube 0:** Measurement grid: dx=4mm, dy=4mm, dz=2mm

Reference Value = 8.382 V/m; Power Drift = -0.03 dB

Peak SAR (extrapolated) = 0.742 W/kg

**SAR(1 g) = 0.191 W/kg; SAR(10 g) = 0.077 W/kg**

Maximum value of SAR (measured) = 0.349 W/kg



## WiFi 5GHz\_

Frequency: 5290 MHz; Duty Cycle: 1:1; Room Ambient Temperature: 24.0°C; Liquid Temperature: 23.0°C

Medium parameters used:  $f = 5290$  MHz;  $\sigma = 5.542$  S/m;  $\epsilon_r = 47.317$ ;  $\rho = 1000$  kg/m<sup>3</sup>

DASY5 Configuration:

- Area Scan Setting: Find Secondary Maximum Within: 2.0 dB and with a peak SAR value greater than 0.0012W/kg
- Electronics: DAE4 Sn1258; Calibrated: 5/14/2015
- Probe: EX3DV4 - SN3989; ConvF(4.77, 4.77, 4.77); Calibrated: 3/17/2015;
- Sensor-Surface: 2mm (Mechanical Surface Detection)
- Phantom: ELI A (v5.0); Type: QDOVA001BB; Serial: S/n:1212

**Rear/802.11ac VHT80\_Ch 58\_0mm/Area Scan (12x19x1):** Measurement grid: dx=10mm, dy=10mm

Maximum value of SAR (measured) = 8.04 W/kg

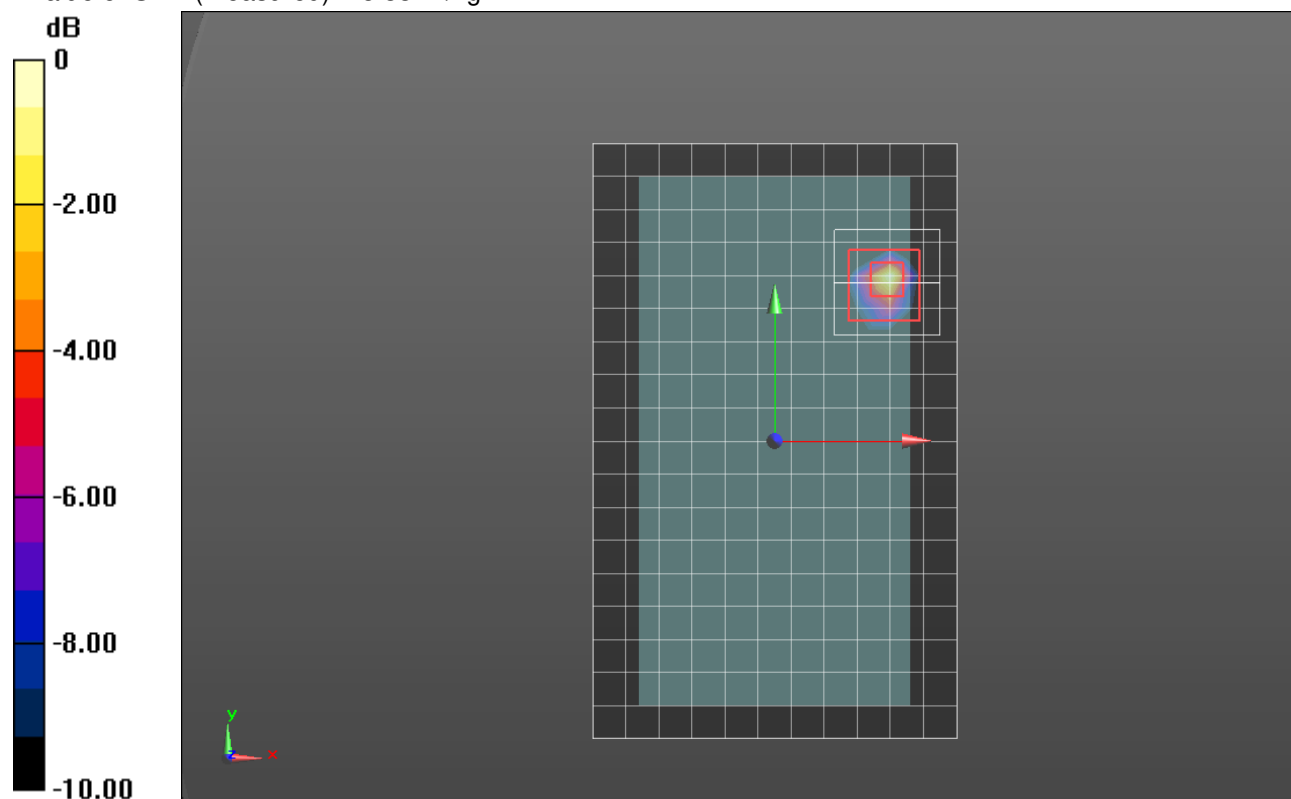
**Rear/802.11ac VHT80\_Ch 58\_0mm/Zoom Scan (9x9x12)/Cube 0:** Measurement grid: dx=4mm, dy=4mm, dz=2mm

Reference Value = 40.97 V/m; Power Drift = 0.07 dB

Peak SAR (extrapolated) = 19.0 W/kg

**SAR(1 g) = 3.49 W/kg; SAR(10 g) = 0.773 W/kg**

Maximum value of SAR (measured) = 8.33 W/kg



0 dB = 8.33 W/kg = 9.21 dBW/kg

## Wi-Fi 5GHz

Frequency: 5530 MHz; Duty Cycle: 1:1; Room Ambient Temperature: 24.0°C; Liquid Temperature: 23.0°C

Medium parameters used:  $f = 5530$  MHz;  $\sigma = 5.03$  S/m;  $\epsilon_r = 34.252$ ;  $\rho = 1000$  kg/m<sup>3</sup>

DASY5 Configuration:

- Area Scan Setting: Find Secondary Maximum Within: 2.0 dB and with a peak SAR value greater than 0.0012W/kg
- Electronics: DAE4 Sn1258; Calibrated: 5/14/2015
- Probe: EX3DV4 - SN3989; ConvF(4.9, 4.9, 4.9); Calibrated: 3/17/2015;
- Sensor-Surface: 2mm (Mechanical Surface Detection (Locations From Previous Scan Used)), Sensor-Surface: 2mm (Mechanical Surface Detection)
- Phantom: SAM with CRP; Type: SAM;

**RHS/Touch\_802.11ac VHT80\_Ch 106/Area Scan (11x20x1):** Measurement grid: dx=10mm, dy=10mm

Maximum value of SAR (measured) = 0.454 W/kg

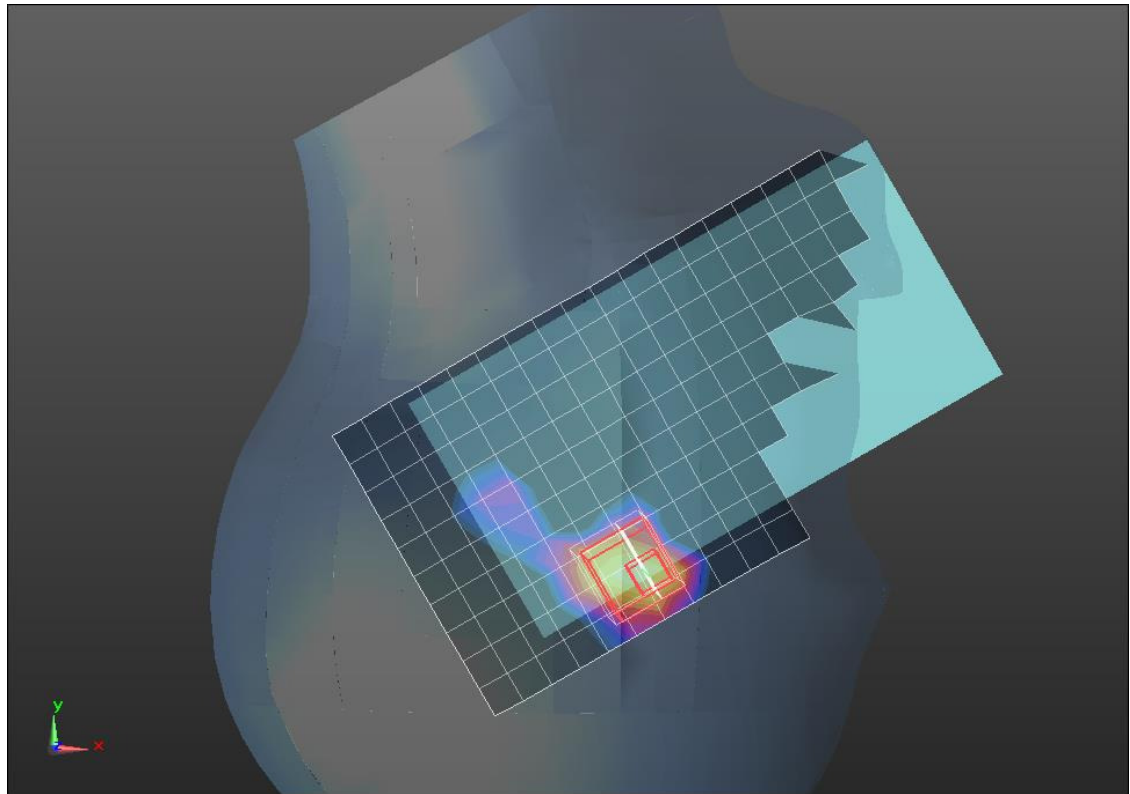
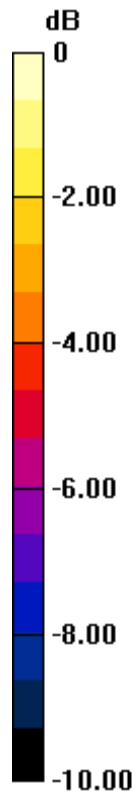
**RHS/Touch\_802.11ac VHT80\_Ch 106/Zoom Scan (7x7x12)/Cube 0:** Measurement grid: dx=4mm, dy=4mm, dz=2mm

Reference Value = 9.925 V/m; Power Drift = -0.03 dB

Peak SAR (extrapolated) = 1.19 W/kg

**SAR(1 g) = 0.279 W/kg; SAR(10 g) = 0.097 W/kg**

Maximum value of SAR (measured) = 0.566 W/kg



0 dB = 0.566 W/kg = -2.47 dBW/kg



## WiFi 5GHz

Frequency: 5530 MHz; Duty Cycle: 1:1; Room Ambient Temperature: 24.0°C; Liquid Temperature: 23.0°C

Medium parameters used:  $f = 5530$  MHz;  $\sigma = 5.846$  S/m;  $\epsilon_r = 46.855$ ;  $\rho = 1000$  kg/m<sup>3</sup>

DASY5 Configuration:

- Area Scan Setting: Find Secondary Maximum Within: 2.0 dB and with a peak SAR value greater than 0.0012W/kg
- Electronics: DAE4 Sn1258; Calibrated: 5/14/2015
- Probe: EX3DV4 - SN3989; ConvF(4, 4, 4); Calibrated: 3/17/2015;
- Sensor-Surface: 2mm (Mechanical Surface Detection (Locations From Previous Scan Used)), Sensor-Surface: 2mm (Mechanical Surface Detection)
- Phantom: ELI A (v5.0); Type: QDOVA001BB; Serial: S/n:1212

**Rear/802.11a\_Ch 106/Area Scan (12x19x1):** Measurement grid: dx=10mm, dy=10mm

Maximum value of SAR (measured) = 0.300 W/kg

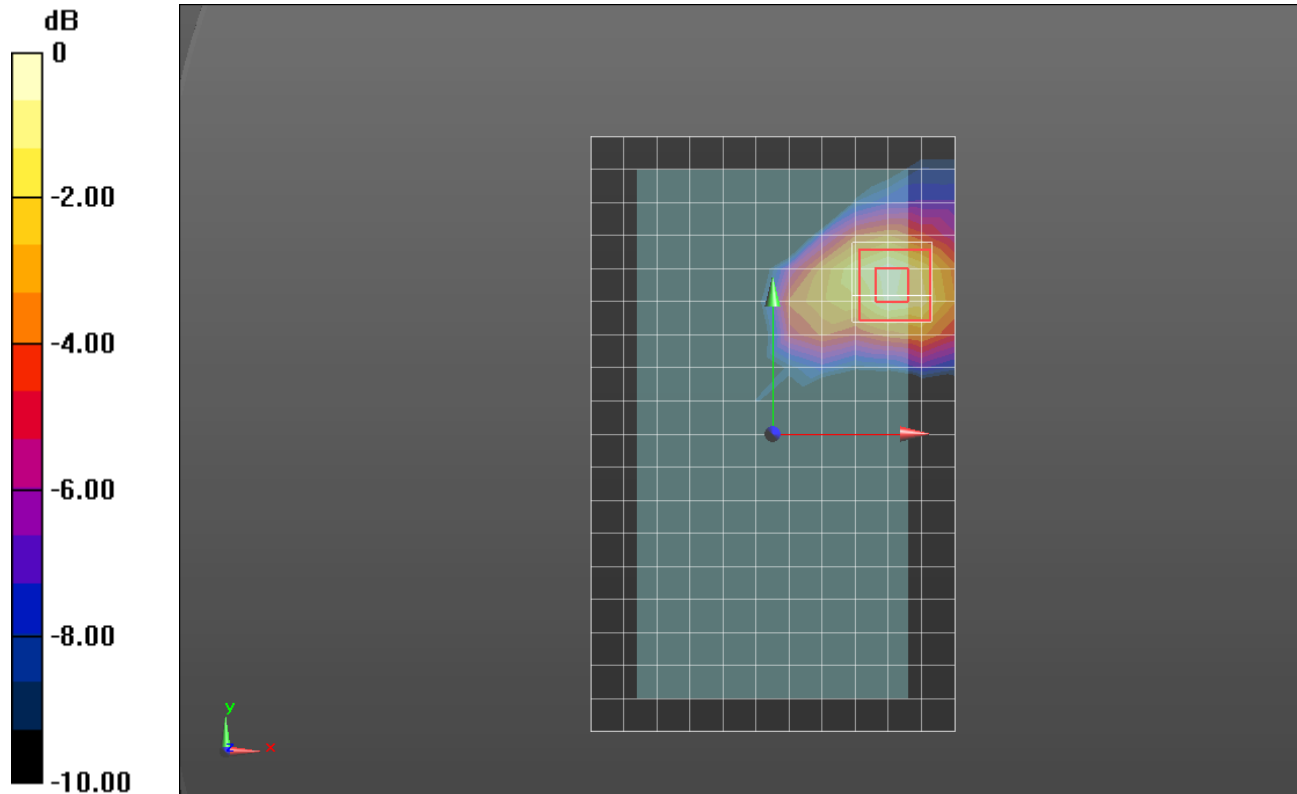
**Rear/802.11a\_Ch 106/Zoom Scan (7x7x12)/Cube 0:** Measurement grid: dx=4mm, dy=4mm, dz=2mm

Reference Value = 6.959 V/m; Power Drift = 0.11 dB

Peak SAR (extrapolated) = 0.721 W/kg

**SAR(1 g) = 0.168 W/kg; SAR(10 g) = 0.065 W/kg**

Maximum value of SAR (measured) = 0.313 W/kg



0 dB = 0.313 W/kg = -5.04 dBW/kg



## WiFi 5GHz\_

Frequency: 5530 MHz; Duty Cycle: 1:1; Room Ambient Temperature: 24.0°C; Liquid Temperature: 23.0°C  
Medium parameters used:  $f = 5530$  MHz;  $\sigma = 5.846$  S/m;  $\epsilon_r = 46.855$ ;  $\rho = 1000$  kg/m<sup>3</sup>

DASY5 Configuration:

- Area Scan Setting: Find Secondary Maximum Within: 2.0 dB and with a peak SAR value greater than 0.0012W/kg
- Electronics: DAE4 Sn1258; Calibrated: 5/14/2015
- Probe: EX3DV4 - SN3989; ConvF(4, 4, 4); Calibrated: 3/17/2015;
- Sensor-Surface: 2mm (Mechanical Surface Detection (Locations From Previous Scan Used)), Sensor-Surface: 2mm (Mechanical Surface Detection)
- Phantom: ELI A (v5.0); Type: QDOVA001BB; Serial: S/n:1212

**Rear/802.11ac VHT80\_Ch 106\_0mm/Area Scan (12x19x1):** Measurement grid: dx=10mm, dy=10mm  
Maximum value of SAR (measured) = 7.53 W/kg

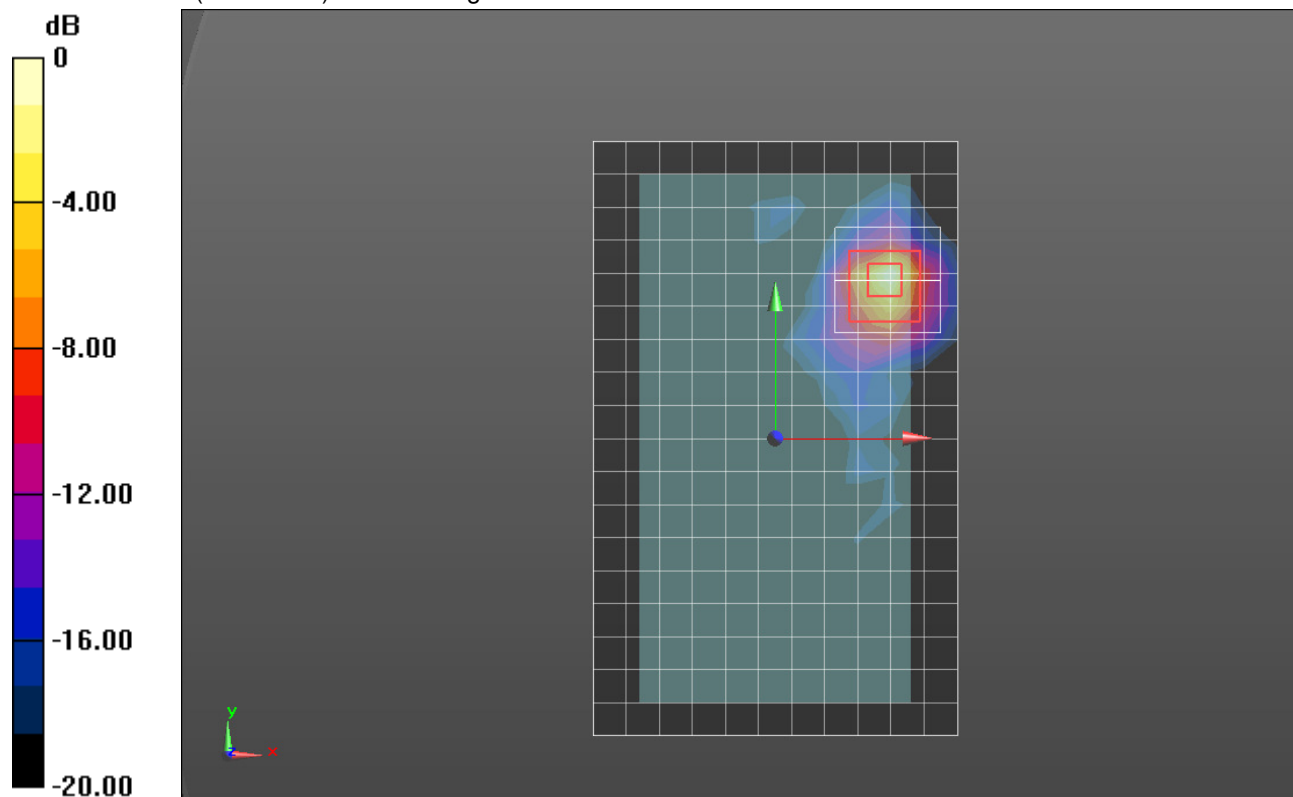
**Rear/802.11ac VHT80\_Ch 106\_0mm/Zoom Scan (9x9x12)/Cube 0:** Measurement grid: dx=4mm, dy=4mm, dz=2mm

Reference Value = 37.05 V/m; Power Drift = 0.11 dB

Peak SAR (extrapolated) = 15.5 W/kg

**SAR(1 g) = 2.89 W/kg; SAR(10 g) = 0.655 W/kg**

Maximum value of SAR (measured) = 6.94 W/kg



0 dB = 6.94 W/kg = 8.41 dBW/kg

## Wi-Fi 5GHz

Frequency: 5775 MHz; Duty Cycle: 1:1; Room Ambient Temperature: 24.0°C; Liquid Temperature: 23.0°C

Medium parameters used:  $f = 5775$  MHz;  $\sigma = 5.321$  S/m;  $\epsilon_r = 33.864$ ;  $\rho = 1000$  kg/m<sup>3</sup>

DASY5 Configuration:

- Area Scan Setting: Find Secondary Maximum Within: 2.0 dB and with a peak SAR value greater than 0.0012W/kg
- Electronics: DAE4 Sn1258; Calibrated: 5/14/2015
- Probe: EX3DV4 - SN3989; ConvF(5.03, 5.03, 5.03); Calibrated: 3/17/2015;
- Sensor-Surface: 2mm (Mechanical Surface Detection (Locations From Previous Scan Used)), Sensor-Surface: 2mm (Mechanical Surface Detection)
- Phantom: SAM with CRP; Type: SAM;

**RHS/Touch\_802.11ac VHT80\_Ch 155/Area Scan (11x20x1):** Measurement grid: dx=10mm, dy=10mm  
Maximum value of SAR (measured) = 0.292 W/kg

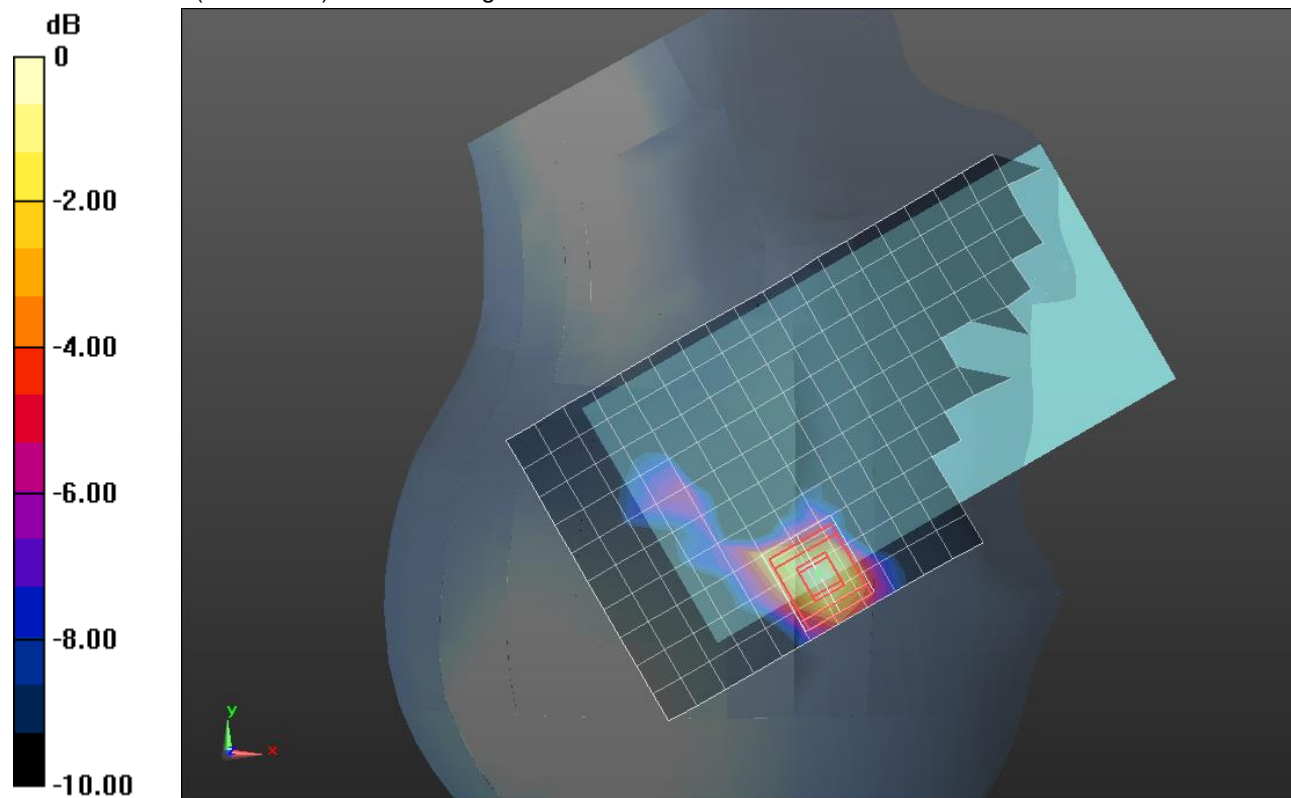
**RHS/Touch\_802.11ac VHT80\_Ch 155/Zoom Scan (7x7x12)/Cube 0:** Measurement grid: dx=4mm, dy=4mm, dz=2mm

Reference Value = 7.607 V/m; Power Drift = 0.01 dB

Peak SAR (extrapolated) = 0.699 W/kg

**SAR(1 g) = 0.169 W/kg; SAR(10 g) = 0.054 W/kg**

Maximum value of SAR (measured) = 0.332 W/kg



0 dB = 0.332 W/kg = -4.79 dBW/kg

## WiFi 5GHz

Frequency: 5775 MHz; Duty Cycle: 1:1; Room Ambient Temperature: 24.0°C; Liquid Temperature: 23.0°C  
Medium parameters used:  $f = 5775$  MHz;  $\sigma = 6.201$  S/m;  $\epsilon_r = 46.425$ ;  $\rho = 1000$  kg/m<sup>3</sup>

DASY5 Configuration:

- Area Scan Setting: Find Secondary Maximum Within: 2.0 dB and with a peak SAR value greater than 0.0012W/kg
- Electronics: DAE4 Sn1258; Calibrated: 5/14/2015
- Probe: EX3DV4 - SN3989; ConvF(4.36, 4.36, 4.36); Calibrated: 3/17/2015;
- Sensor-Surface: 2mm (Mechanical Surface Detection (Locations From Previous Scan Used)), Sensor-Surface: 2mm (Mechanical Surface Detection)
- Phantom: ELI A (v5.0); Type: QDOVA001BB; Serial: S/n:1212

**Rear/802.11ac VHT80\_Ch 155/Area Scan (12x19x1):** Measurement grid: dx=10mm, dy=10mm  
Maximum value of SAR (measured) = 0.197 W/kg

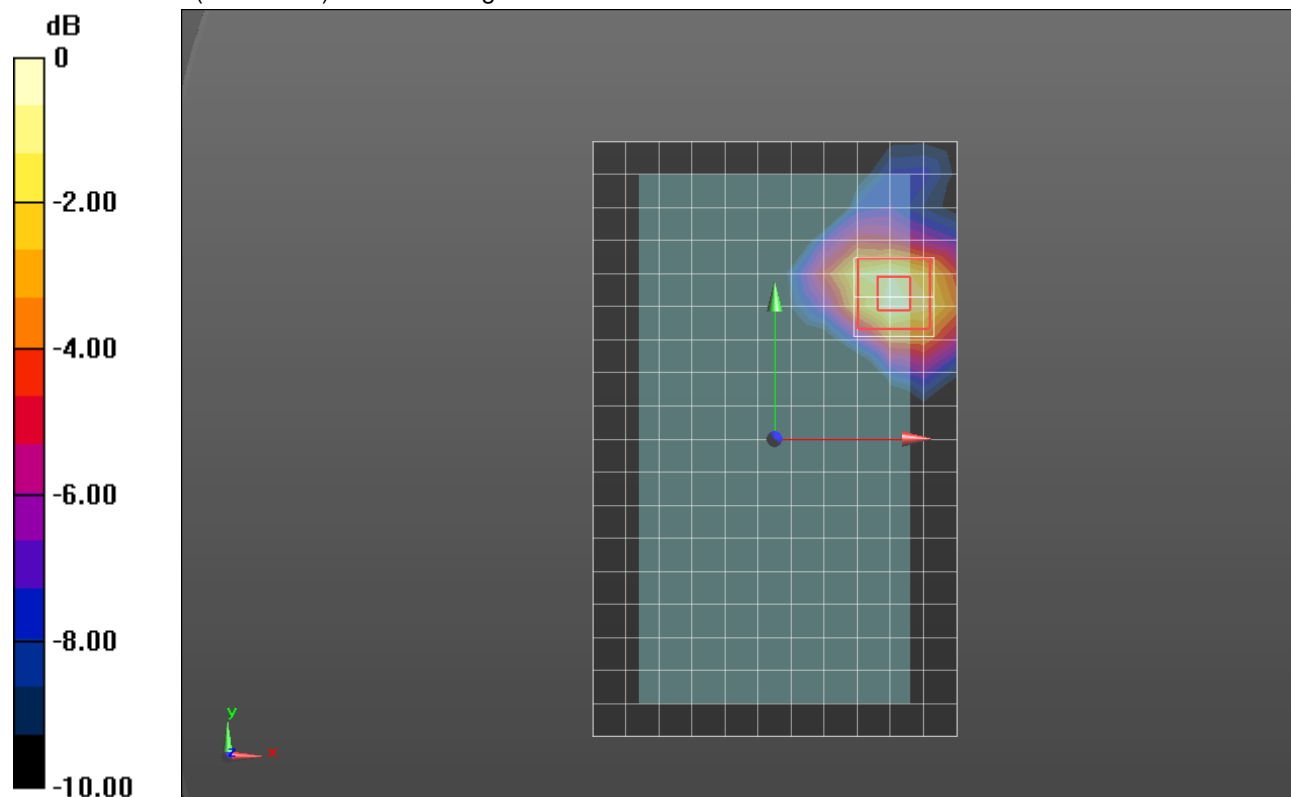
**Rear/802.11ac VHT80\_Ch 155/Zoom Scan (7x7x12)/Cube 0:** Measurement grid: dx=4mm, dy=4mm, dz=2mm

Reference Value = 5.332 V/m; Power Drift = -0.09 dB

Peak SAR (extrapolated) = 0.391 W/kg

**SAR(1 g) = 0.098 W/kg; SAR(10 g) = 0.036 W/kg**

Maximum value of SAR (measured) = 0.201 W/kg



0 dB = 0.201 W/kg = -6.97 dBW/kg

## WiFi 5GHz\_

Frequency: 5775 MHz; Duty Cycle: 1:1; Room Ambient Temperature: 24.0°C; Liquid Temperature: 23.0°C

Medium parameters used:  $f = 5775$  MHz;  $\sigma = 6.201$  S/m;  $\epsilon_r = 46.425$ ;  $\rho = 1000$  kg/m<sup>3</sup>

DASY5 Configuration:

- Area Scan Setting: Find Secondary Maximum Within: 2.0 dB and with a peak SAR value greater than 0.0012W/kg
- Electronics: DAE4 Sn1258; Calibrated: 5/14/2015
- Probe: EX3DV4 - SN3989; ConvF(4.36, 4.36, 4.36); Calibrated: 3/17/2015;
- Sensor-Surface: 2mm (Mechanical Surface Detection (Locations From Previous Scan Used)), Sensor-Surface: 2mm (Mechanical Surface Detection)
- Phantom: ELI A (v5.0); Type: QDOVA001BB; Serial: S/n:1212

**Rear/802.11ac VHT80\_Ch 155\_0mm/Area Scan (12x19x1):** Measurement grid: dx=10mm, dy=10mm

Maximum value of SAR (measured) = 3.13 W/kg

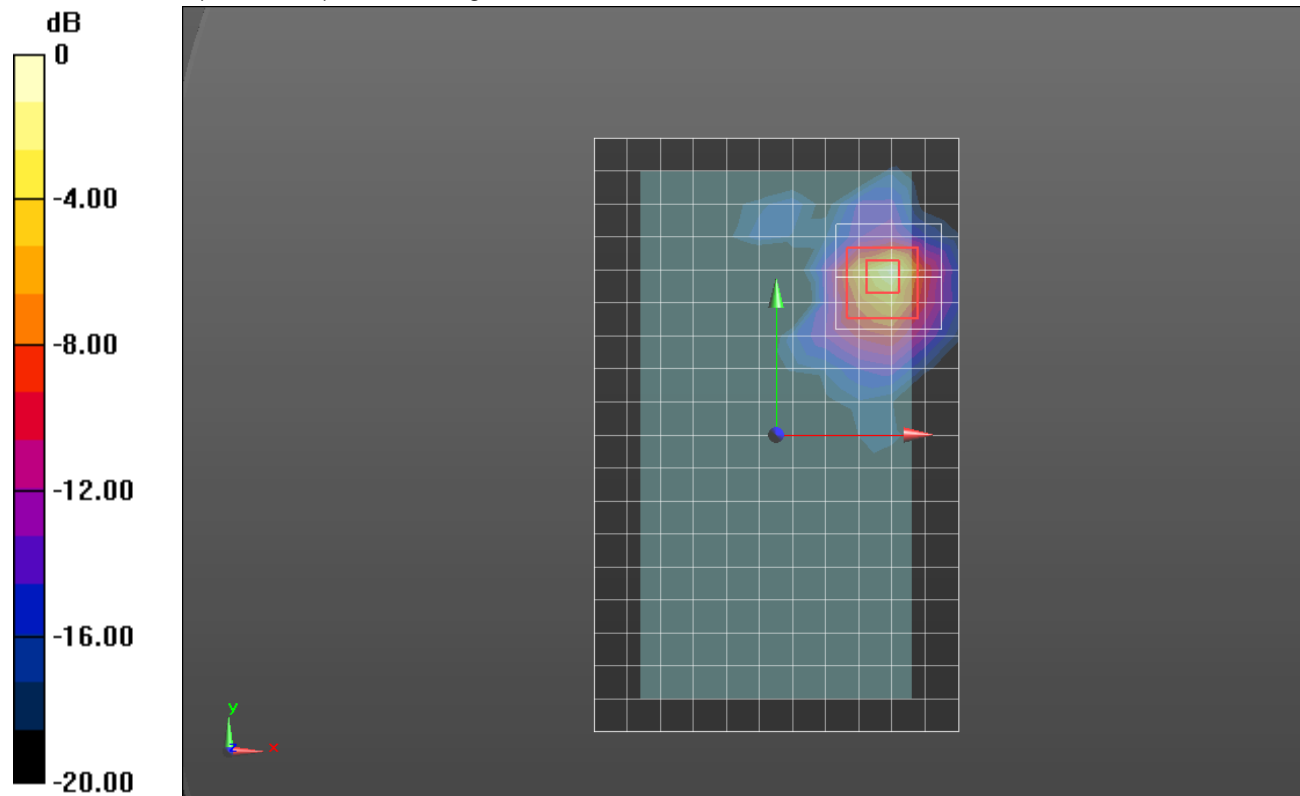
**Rear/802.11ac VHT80\_Ch 155\_0mm/Zoom Scan (9x9x12)/Cube 0:** Measurement grid: dx=4mm, dy=4mm, dz=2mm

Reference Value = 25.20 V/m; Power Drift = 0.15 dB

Peak SAR (extrapolated) = 8.33 W/kg

**SAR(1 g) = 1.53 W/kg; SAR(10 g) = 0.357 W/kg**

Maximum value of SAR (measured) = 3.61 W/kg



0 dB = 3.61 W/kg = 5.58 dBW/kg