

## 5883 SUMMARY OF CONNECTIONS

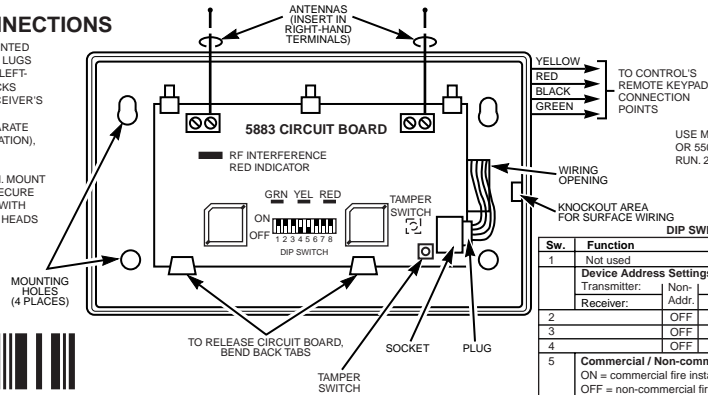
**NOTE:** WHEN CIRCUIT BOARD IS MOUNTED IN CONTROL'S CABINET, GROUNDING LUGS (2) PROVIDED *MUST* BE INSERTED IN LEFT-HAND TERMINALS OF ANTENNA BLOCKS AND SECURED TO CABINET (SEE RECEIVER'S AND CONTROL'S INSTRUCTIONS). WHEN BOARD IS MOUNTED IN A SEPARATE CABINET (COMMERCIAL FIRE APPLICATION), DO NOT USE THE GROUNDING LUGS.

FOR COMMERCIAL FIRE APPLICATION, MOUNT BOARD IN SEPARATE CABINET AND SECURE WITH TWO SCREWS (NOT SUPPLIED) WITH INSULATING WASHERS BENEATH THE HEADS (SEE RECEIVER'S INSTRUCTIONS).

**ADEMCO GROUP**  
165 Eileen Way, Syosset, New York 11791  
Copyright © 2000 PITTWAY CORPORATION



K5501 6/00



THIS DEVICE COMPLIES WITH PART 15 OF FCC RULES. OPERATION IS SUBJECT TO THE FOLLOWING TWO CONDITIONS: (1) THIS DEVICE MAY NOT CAUSE HARMFUL INTERFERENCE, AND (2) THIS DEVICE MUST ACCEPT ANY INTERFERENCE RECEIVED, INCLUDING INTERFERENCE THAT MAY CAUSE UNDESIRABLE OPERATION.

FCC ID CFS8DL5883

USE MAX. OF 220 ft. (67m) OF #22 (0.64mm) WIRE OR 550 ft. (168m) OF #18 (1mm) WIRE FOR EACH RUN. 20 ft. MAX. IN COMMERCIAL FIRE INSTALLATIONS.



Sw.	Function
1	Not used
<b>Device Address Settings</b>	
Transmitter:	Non- 28 29 30 27 28 29 30
Addr:	1 2 3 4 5 6 7
Receiver:	OFF OFF OFF OFF ON ON ON ON
2	OFF OFF ON ON OFF OFF ON ON
3	OFF ON OFF ON OFF ON OFF ON
4	OFF ON OFF ON OFF ON OFF ON
5	<b>Commercial / Non-commercial Fire Installation:</b>
	ON = commercial fire installation
	OFF = non-commercial fire installation
6-8	Not used