

APPENDIX

11. Photographs of Test Setup

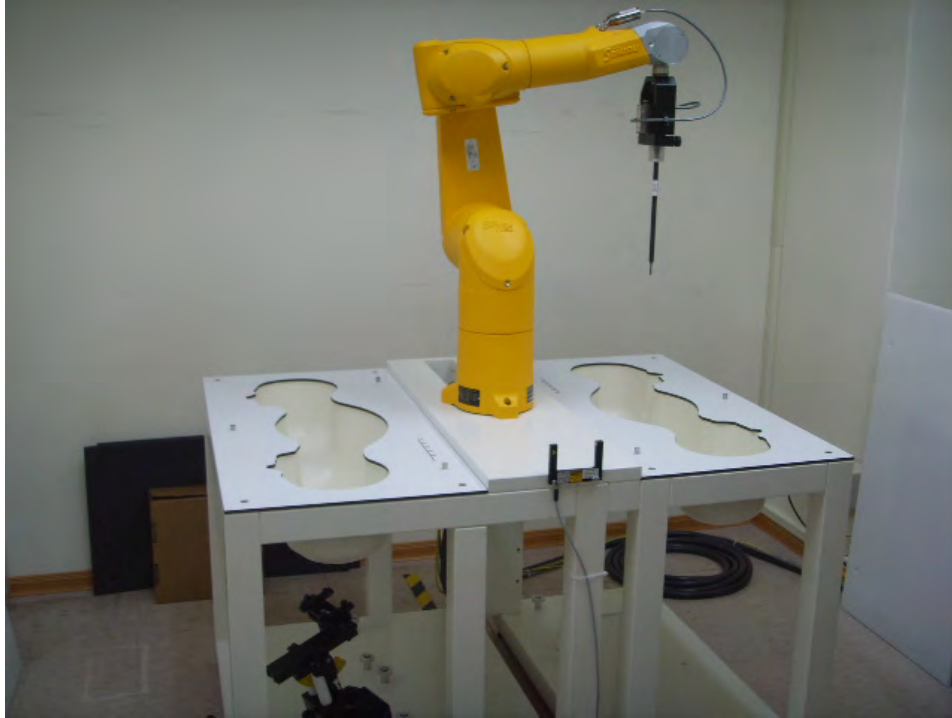


Fig.1 Photograph of the SAR measurement system

Photograph of the Tissue Simulant Fluid Liquid Depth

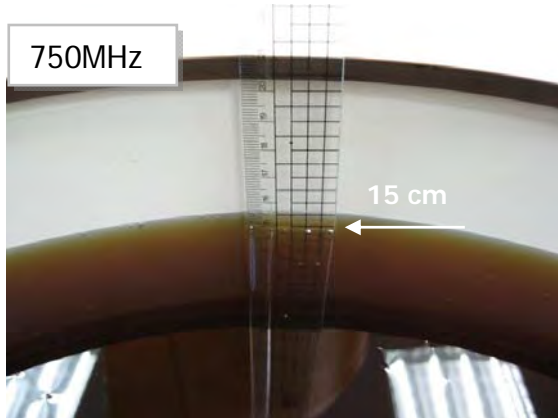


Fig.2.1

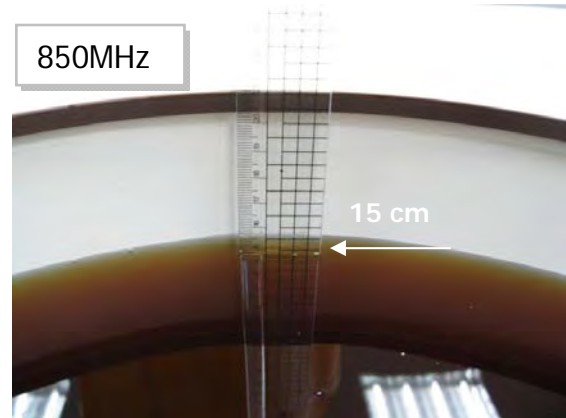


Fig.2.2

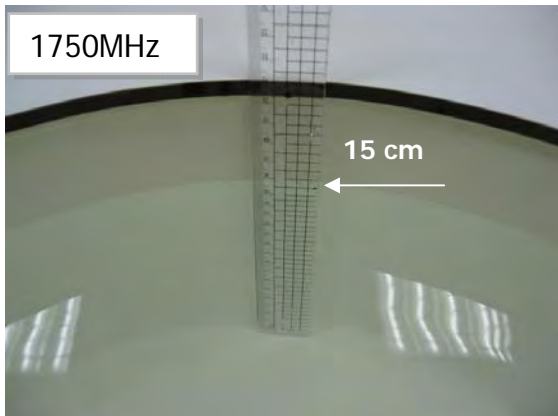


Fig.2.3

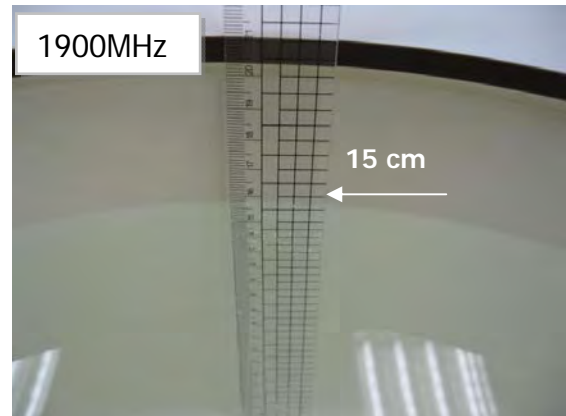


Fig.2.4

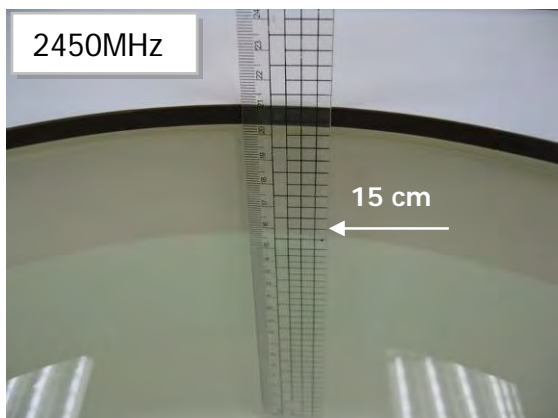


Fig.2.5

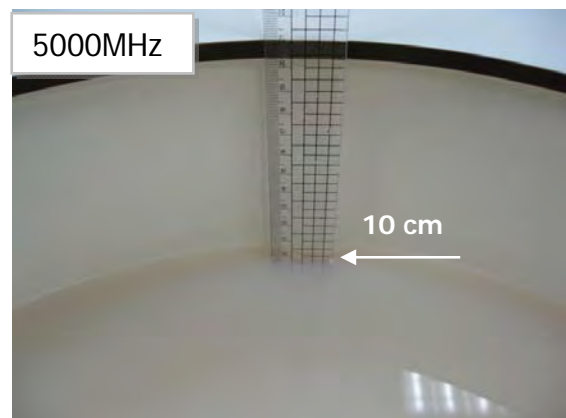


Fig.2.6

Body - distance between flat phantom and EUT is 0 mm

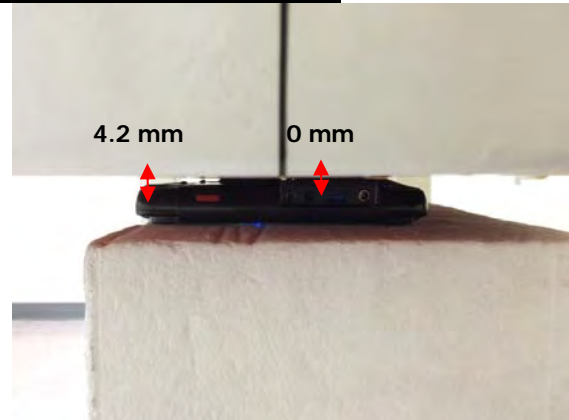


Fig.3 EUT Back side to flat phantom

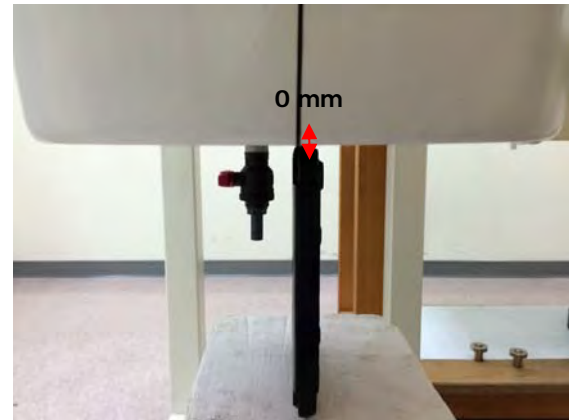
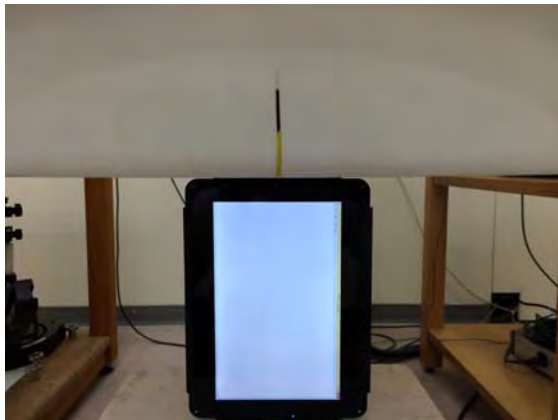


Fig.4 EUT Left side to flat phantom

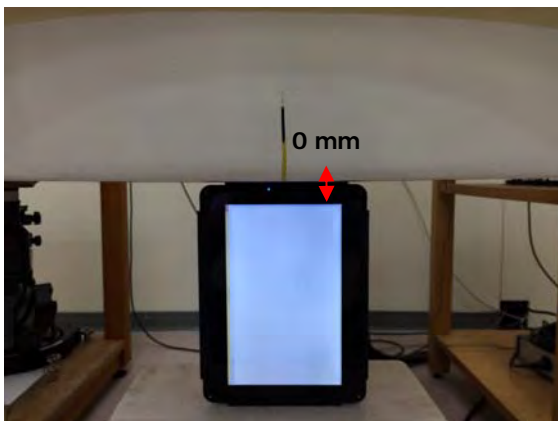


Fig.5 EUT Right side to flat phantom

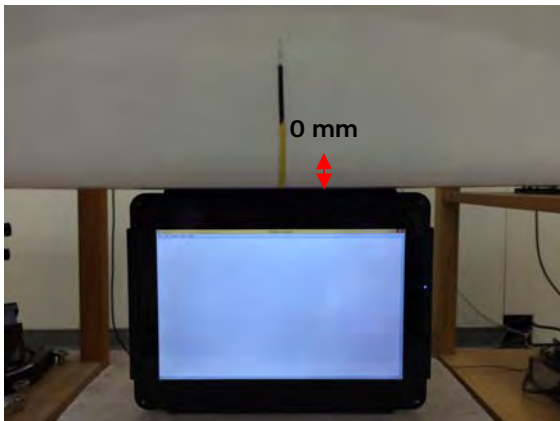


Fig.6 EUT Top side to flat phantom

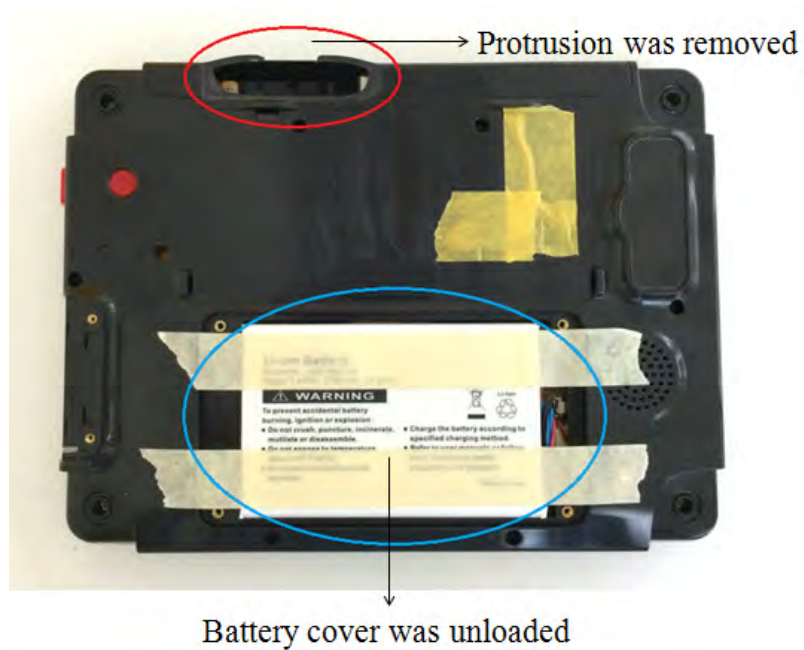
12. Photographs of the EUT



Fig.7 Front view of EUT



Fig.8 Back view of EUT



**Fig.9 Back view of EUT for SAR testing
(Protrusion was removed and battery cover was unloaded)**

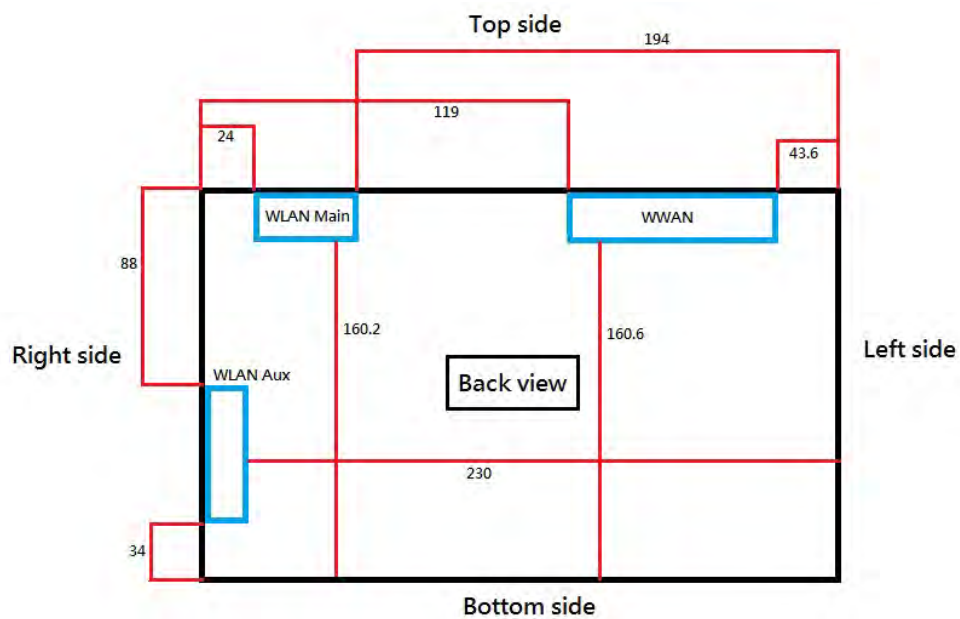


Fig.10 Antenna position of EUT (Back view)

- End of Report -