

EUT : Fast Ethernet 10/100 USB Adapter

FCC ID : MQ4UFE1KA

Abocom Systems, Inc.

USER'S MANUAL

FEDERAL COMMUNICATIONS COMMISSION

NOTE

It has been tested and found to comply with the limits for a Class B device, pursuant to Part 15 of the FCC Rules. These limits are designed to provide reasonable protection. This equipment generates, uses and can radiate radio frequency energy and, if not installed and used in accordance with the instructions, may cause harmful interference to radio communications. However, there is no guarantee that interference will not occur in a particular installation. If this equipment does cause harmful interference to radio or television reception, which can be determined by turning the equipment off and on, the user is encouraged to try to correct the interference by one or more of the following measures:

- Reorient or relocate the receiving antenna.
- Increase the separation between the equipment and receiver.
- Connect the equipment into an outlet on a circuit different from that to which the receiver is connected.
- Consult the dealer or an experienced radio/TV technician for help.

Shielded interface cables must be used in order to comply with emission limits.

Changes or modifications not expressly approved by the party responsible for compliance could void the user's authority to operate the equipment.

User's Guide

Introduction

Now you can experience a true plug-and-play Network device easier than ever. The USB (Universal Serial Bus) Network Adapter allows you to connect any 10Mbps or 10Mbps/100Mbps network from a USB-enabled PC, notebook, or USB HUB. With instant hardware recognition from Windows 98 and "Hot Swap" feature from USB specification, you don't need to be a MIS specialist to operate it. Just simply hook up the USB cable at one end and plug a standard twist pair (RJ45) network cable in the other end, and you will be networked within no time!

Package Contents:

- USB Network Adapter
- One USB cable
- One Driver Disk
- User's guide

Hardware Installation

Note: Before you install USB LAN adapter, please check your PC which is installed and enabled the USB port. You need to have both USB port and USB enabled to continue the next step. Otherwise, please STOP this installation.

In order to properly install the USB LAN adapter, it is very important to recognize the hardware first.

1. USB Cable

USB cable has two ends – One has rectangular plug, or called A-Type connector; another one has a square plug, or called B-type connector.

2. USB LAN Adapter

USB LAN adapter has two ports. One port is USB B-type port and the other is RJ45 Networking port – it looks like an over-sized phone jack.

Hardware Installation Procedure –

Step 1 -- Make sure the PC is powered on and runs **Windows 98**.

Step 2 -- Connect cable B-type plug into adapter's B-type port.

Step 3 – Insert SUB A-type cable into the PC's USB port.

Step 4 – Connect the adapter to a 10Mbps or 10Mbps/100Mbps auto-sensing HUB.

Note: 10/100Mbps dual speed network uses Category 5 cabling. Cables of less quality and category will not work. Also make sure your are free of defects and they do not exceed 100 meters in length.

After successfully install the hardware. Now are ready for software. Before you go any further, please note that your USB LAN adapter USB can ONLY work with Windows 98 and some versions of Windows 95 version (OSR2) support USB. If you have NOT yet installing Windows 98, please STOP now. Get the Windows 98 loaded, then continue the next step.

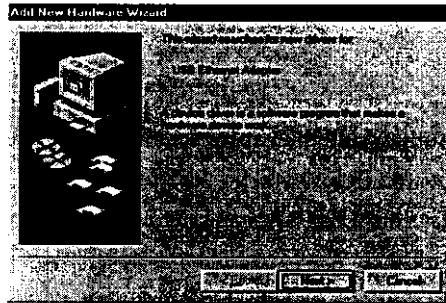
Windows 98 Setup

Note: Before you begin the driver installation, please make sure disable any network card currently installed into your system. And, have your Windows 98 CD-ROM copy handy.

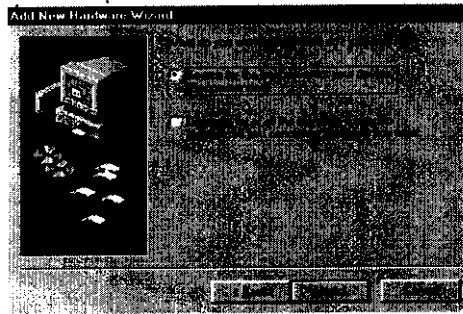
Step 1: Install the USB LAN Adapter into your PC or Notebook

Step 2: Start up your computer and Windows 98

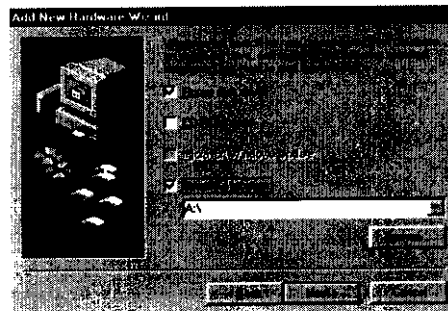
Step 3: Windows 98 will show a "New Hardware Found" window. Click "Next"



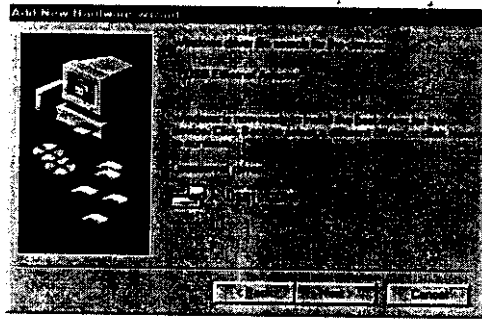
Step 4: Put the USB Network Adapter program diskette into Driver A and select "Search for the best driver for your device (Recommended)." Click "Next."



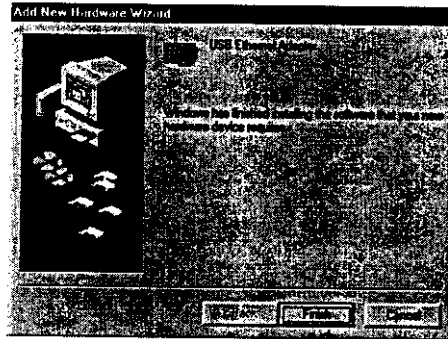
Step 5: Windows 98 will ask you to indicate the best driver. Make sure the floppy disk driver is selected and drive **a:** is specified. Click “Next” to continue.



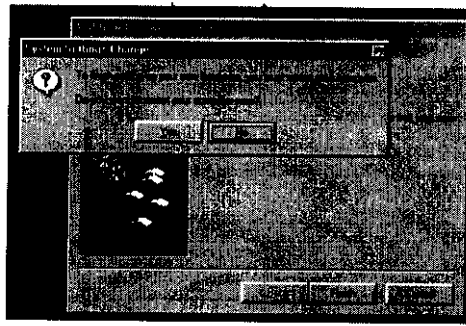
Step 6: Windows 98 will search the specified driver and start the download the driver. Click “Next” to continue.



Step 7: When Windows 98 finish the driver installation, click “Finish” button.

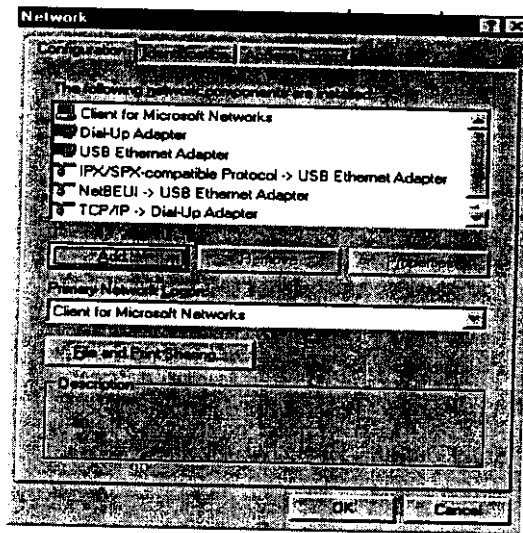


Step 8: Then Windows will ask you to restart your computer. Click “No” to continue.



Step 9: Once you are back at the desktop, click on the **"Start"** button. Then click on **"Settings,"** then **"Control Panel."**

Step 10: Double-click the Network icon. Then select **"Configuration"** tab. Make sure the network components are installed.



Step 11: Now you can select the network protocol. After that the system restart your computer to let the setting be permanent.

LED Indicator

- **Link:** Indicates a good linkage between the ALN adapter and supporting HUB or Switch
- **Activity (Tx/Rx):** Flash when data is transmitting between network.

Specifications

Network Specification

- IEEE 802.3 10BaseT Ethernet
- IEEE 802.3u 100BaseTX Fast Ethernet
- Cat 3/Cat 5 UTP, 100ohm STP cable up to 328ft/100M

Host Interface

- Bus-powered from USB host or HUB, no external power needed
- High speed upstream B type USB port
- Suspend power saving mode supported

Data Speed

10Mbps for Ethernet data transfer

Environment Operating Ranges

- Temperature: 32 to 149F (0 to 65 C)
- Humidity: 10% to 90% noncondensing

Power Consumption

- Operating: +5V DC. 75mA Max

LED Indicator

- 10M indication – Green
- 100M indication -- Green
- Activity (TX/RX) – Amber

Driver Support

- Windows 98
- Windows 2000 (when available)

EMI Conformance

- FCC Part 15 Class B
- CE Mark Class B
- Japan VCCI Class B

