

WiiM



WiiM CI MOD S Hi-Res Audio Streamer

Model: ASR013

CONTENTS

1.	INTRODUCTION	3
2.	WHAT'S IN THE BOX	3
3.	SPEC	4
4.	CONTROLS AND LIGHTS	5
5.	HOW TO SET UP	8
5.1	CONNECT THE AUDIO CABLE	8
5.2	SETUP SYSTEM	9
5.3	FILL YOUR HOME WITH SOUND	10
6.	VOICE CONTROL	10
6.1	WORKS WITH ALEXA	10
6.2	WORKS WITH SIRI	11
6.3	WORKS WITH GOOGLE VOICE ASSISTANT	11
7	CONTROL VIA YOUR FAVORITE APP	12
7.1	SPOTIFY CONNECT	12
7.3	TIDAL CONNECT	13
7.4	AMAZON MUSIC CAST	13
8	ALL MUSIC IN ONE APP	14
9.1	LINKPLAY MULTIROOM/STEREO PAIRING	15
9.2	AMAZON ALEXA MULTIROOM	15
9.3	MULTIROOM WITH CHROMECAST AUDIO DEVICES	15
10	AUDIO INPUT VIA LINE IN OR SPDIF IN	16
11	AUDIO OUTPUT VIA LINE /SPDIF/COAX/BT OUT	16
11.1	AUDIO OUTPUT VIA SPDIF/COAX/LINE OUT	17
11.2	AUDIO OUTPUT VIA BT OUT (BT sourcing mode)	17
12	STREAM AUDIO TO WIIM CI MOD S WITH BLUETOOTH	17
13	ADVANCED FEATURES	17
13.1	UPDATE THE SPEAKER	17
13.2	DISABLE/ENABLE WI-FI	17
14	FAQ	18

IMPORTANT SAFETY INSTRUCTIONS	18
CE/FCC/IC Statements	19

1. INTRODUCTION

Our goal at WiiM is to provide you with the simplest, most affordable, Hi-Fi, lossless audio systems. With our patented audio streaming solution built into all our high-quality products and mobile app, you will have the ease of playing music throughout your home. All our products are developed with the finest product design and intuitive user interface.

Meet WiiM CI MOD S, one of the most versatile network music streamers in the market. It delivers Google Chromecast with the bit-perfect output, AirPlay 2, Spotify Connect, TIDAL Connect, DLNA, MQA (Beta), Amazon Music Cast, gapless playback of Hi-Res 192k/24-bit lossless audio, and more to your stereo system. It streams music directly from the cloud of all major music services or your own library.

Just plug WiiM CI MOD S into your stereo receiver, DAC, or amplifier and control it directly from the free WiiM Home App, your favorite music apps such as Spotify, TIDAL, Amazon Music, or any Chromecast-enabled apps. Or, control it with your voice using iPhone, HomePod, compatible Echo devices, Google Home devices, and the Alexa App, Google Home, or Apple Home App.

WiiM CI MOD S can be grouped with Homepod, Echo, Google Home, AirPlay 2 enabled devices, other Alexa-compatible devices, or another WiiM Mini or Pro to stream music throughout your home. Or, play different songs in different rooms. With its digital and analog inputs and outputs, WiiM CI MOD S works with your existing stereo system.

Turn your audio gear smart and hear your music in high fidelity and gaplessly with WiiM CI MOD S from WiiM!

2. WHAT'S IN THE BOX

- WiiM CI MOD S
- Quick start guide
- Power cable
- RCA audio cable
- Optical audio cable

3. TECHNICAL SPECIFICATIONS

Feature	Description
Power Input	USB Type-C, requires 5V, 1.5A or higher Bundled adapter: 5V, 2A
Audio Quality	Audio Output: bit perfect output, up to 192 kHz, 24-bit with digital optical or Coaxial output
Network	802.11 b/g/n/ac 2.4 GHz and 5 GHz dual bands WiFi 10/100M Ethernet
Bluetooth	Bluetooth 5.1
Audio Input	1 x Analog RCA Line input, 2.1Vrms, 96 kHz/24-bit (up to 24-bit) 1 x SPDIF in Optical, up to 192kHz/24-bit
Audio Output	1 x Analog RCA Line output, 1 x Digital optical (SPDIF) output, 1 x Digital Coaxial output, up to 192kHz/24-bit
SNR (built-in DAC)	102 dB
THD+N (built-in DAC)	0.005%
Audio Codec	MP3, AAC, ALAC, APE, FLAC, WAV, WMA, OGG
Protocol	AirPlay 2, Chromecast Audio, DLNA, Spotify Connect, TIDAL Connect, Amazon Music Casting, Qplay 2.0, Roon
Streaming Services in App	Spotify, Amazon Music, Deezer, Tunein, Tidal, Qobuz, SoundCloud, Pandora, iHeartRadio, vTuner, Napster, Sound machine etc.
LED	Three color status LED - Red, Green and White
Button	Capacitive touch buttons – Play/Pause,

	Volume +, Volume -, 1 x Preset
Weight	11.6 oz (330g)
Dimension	5.5 x 5.5 x 1.6 in (140 x 140 x 42 mm)

4. CONTROLS AND LIGHTS





BUTTONS AND INPUT/OUT INTERFACE

Buttons / IO Interface	Functions
Power	USB Type-C power plug
Play/Pause	Play/Pause, network pairing and restore to factory setting
Preset	Start to play the preset content (short press) or save the favorite content as the preset (long press)
Volume Up	Increase volume
Volume Down	Decrease volume
Analog audio in	Standard RCA
Analog audio out	Standard RCA
Digital Optical audio out	SPDIF optical up to 192 kHz/24-bit

Digital Coax audio out	Digital Coaxial port up to 192 kHz/24 bit
Mic	Used to auto-measure the audio path latency for multiroom sync (i.e., AirPlay 2, Alexa MRM, Chromecast MRM or Linkplay MRM etc.)
12 V trigger	2.5mm port to connect cable with your amplifier to automatically turn it on or off. Note: Read the guide that came with your amplifier for details on the use of 12V trigger input.
LAN	10/100Mbps Ethernet port

LIGHTS

State	Color	Flashing/Solid
Boot-up	White	Flashing (fast)
OOBE/Ready to Setup	White	Flashing (slow)
BT ready to pairing	Green	Flashing (slow)
Connecting to Wi-Fi	White, Green	Flashing (fast)
Connected to network	White	Solid
BT mode, paired	Green	Solid
Aux-in mode	Green	Solid
OTA	White, Green	Flashing (slow)
Restore to factory setting	White, Red	Flashing (slow)
Not connected to network (and not in setup mode)	Red	Solid
Faulty Error	Red	Flashing (slow)

NOTES:

WGR: Three color LED, no color mix
W: Wi-Fi as the audio source (product default mode)
G: Audio source from Analog, digital audio input or BT
R: Error (Not connected to network or faulty error)
Three modes: Solid, flashing slow, flashing fast

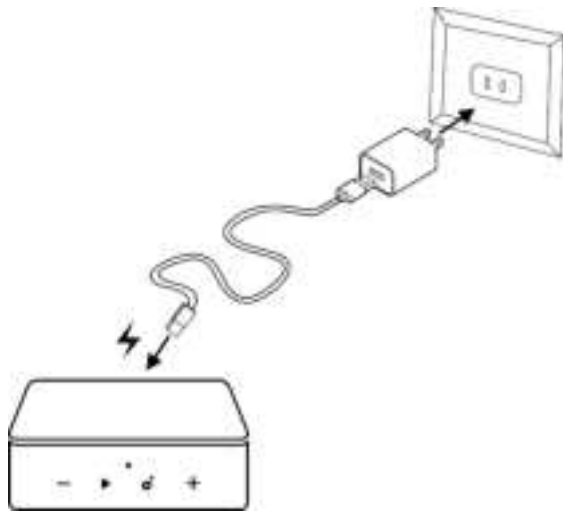
5. HOW TO SET UP

5.1 CONNECT THE AUDIO CABLE

- ① If you're connecting to an audio/video receiver (AVR), DAC or amplifier
or
- ② If you're connecting to powered speakers or soundbar directly
or
- ③ If you're connecting to a TV, vinyl or MP3 player via audio input port then to a
speaker via digital or analog audio output



Attach the power cord and plug in your WiiM CI MOD S.



5.2 SETUP SYSTEM

- **Wi-Fi SETUP**
Download the WiiM Home App



- Power on speaker, audio/video receiver (AVR) or amplifier, or DAC.
- Open the WiiM Home App.
- Click on the device you want to configure.
- Select the network and enter the correct network password.
- Select the maximal bit depth and sample rate for your downstream audio device if you use digital audio output of WiiM CI MOD S. Please note some legacy DAC, amplifier or speaker can't support up to 24-bit/192k Hz audio via its digital audio interface.

If you are using an **iOS system**, you can also use Apple Wireless Accessory Configuration (WAC) protocol or Home App to setup the device.

- **SETUP with Apple WAC**
 - Power on speaker, audio/video receiver (AVR) or amplifier, or computer.-

-
- Open iPhone settings and tap your selected device's name on the WAC setup section
 - **SETUP with Apple Home App**
 - Tap the Home app located on the home screen of the iOS device.
 - Tap the "+" button located at the top-right corner of the screen.
 - Tap "Add Accessory."
 - Tap "Don't Have a Code or Can't Scan?"
 - Tap your selected device which MUST be listed under "Nearby Accessories."

5.3 FILL YOUR HOME WITH SOUND

Stream your favorite music, radio stations through Wi-Fi or Bluetooth. Having multiple WiiM CI MOD S devices, play streaming music the whole house. Or plug in a stereo component—like an amplified turntable, CD player, or MP3 player—and cast music to multiple WiiM CI MOD S connected speakers at once.

You can also group with other AirPlay 2 enabled devices, Amazon Echo or Google Home to provide multiroom audio experiences. The grouping with non-WiiM or LinkPlay devices needs use the corresponding Apps like the Alexa app or Google Home App.

6. VOICE CONTROL

With voice control, you can navigate and interact with your device using your voice to search, play, stop or skip music and more.

When voice control is configured, you can speak commands just like you would perform an action by touch.

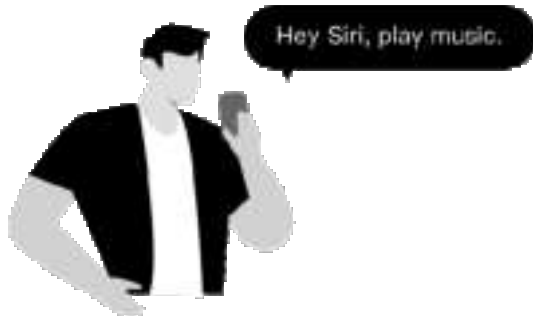
6.1 WORKS WITH ALEXA


Download the Amazon Alexa App and turn on Amazon devices or 3rd party Alexa built-in devices.

- Setup your Amazon account for your WiiM device
- If your WiiM device is not logged into your Amazon account in the WiiM Home App.
- Open WiiM Home App, Click "Browse -> Amazon Alexa -> Sign in to Amazon"
 - Log in to your Amazon account
 - Open the Amazon Alexa app
 - Tap the "Devices" at the bottom of the page.
 - Tap the "+" in the top right corner.
 - Tap "Combine speakers" then select "Multi-room music"
 - Select the configured Echo or other Amazon devices and the configured WiiM CI MOD S device
 - Click "Next" and choose the group name (i.e., Bedroom)
 - Amazon Alexa app prompts that the group has been created.
 - Try "Alexa, play some music in the Bedroom" for the multi-room audio with Echo.
- Or

-
- Choose the WiiM device as the preferred speaker. Thus, you don't need say your device name of WiiM when using Alexa

6.2 WORKS WITH SIRI

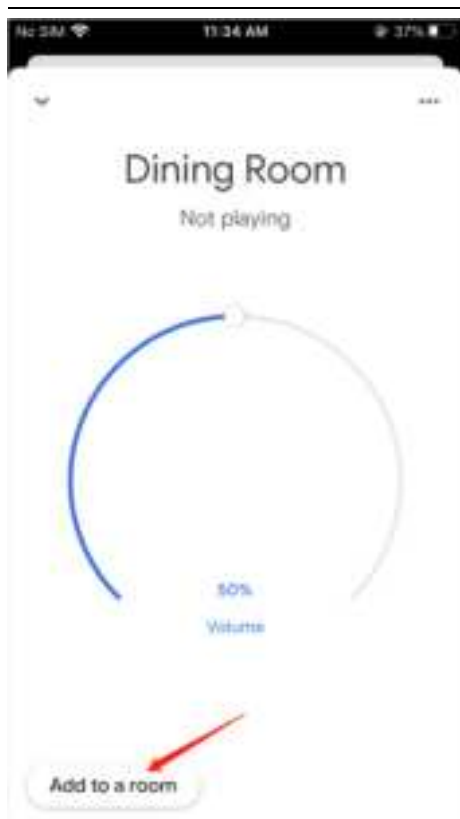


- Configure one to more devices
- Open a music app (like Apple Music) and select a track to play
- Tap .
- Select your speaker/speakers or Home Pod
- Say "Hey Siri, stop music/Play music" on your phone or HomePod

6.3 WORKS WITH GOOGLE VOICE ASSISTANT

Let's assume you've already set up your Google Home and WiiM CI MOD S separately. Now, you must link them together in the Google Home app for Android or iOS:

- Open the Google Home app, you will find the WiiM CI MOD S that you have enabled as Chromecast audio device under "Local devices"
- Tap the name of the WiiM CI MOD S and enter the device control UI
- Tap the "Add to a room" button under the volume circle to add WiiM CI MOD S into one room
- You can use voice to control the WiiM CI MOD S with your Google Home or Android devices



7 CONTROL VIA YOUR FAVORITE APP

7.1 SPOTIFY CONNECT



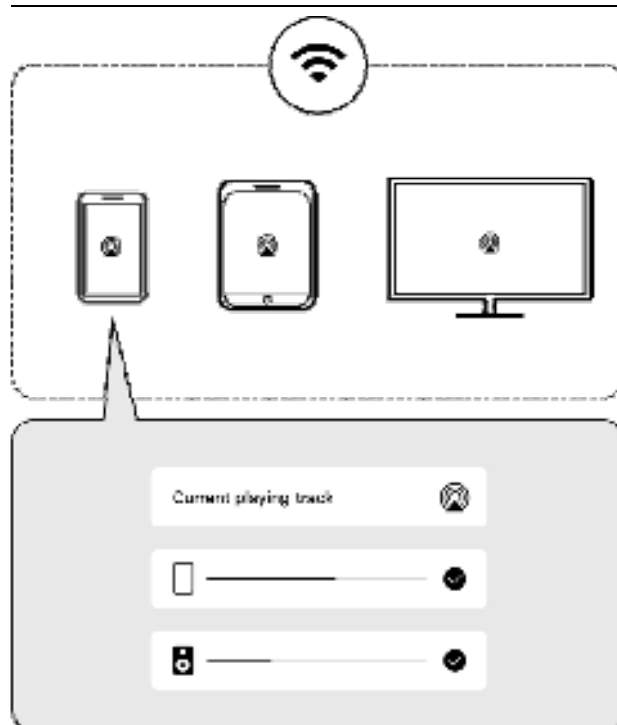
Use your phone, tablet, or computer as a remote control for Spotify. Go to spotify.com/connect to learn how.

The Spotify Software is subject to third party licenses found here:
<https://www.spotify.com/connect/third-party-licenses>

7.2 AIRPLAY 2

WiiM CI MOD S turns your stereo into an AirPlay 2-enabled speaker to stream the music that you love from iOS, Mac and PC devices or stream TV audio from Apple TV. It's an easy and affordable way to connect your Apple devices to your favorite audio equipment and upgrade to an AirPlay 2 receiver.

With AirPlay 2, it lets you stream music from your iOS, MAC, PC and Apple TV device to more than one product to create multiroom audio experience over WiFi.




The WiiM CI MOD S can play AirPlay 2 audio, which allows you to quickly stream audio from your Apple device to the external speaker or multiple speakers.


NOTES:

- To use AirPlay 2, you need an Apple device running iOS 11.4 or later.
- Your Apple device and WiiM CI MOD S must be connected to the same Wi-Fi network.
- For more information about AirPlay 2, visit: <https://www.apple.com/airplay>

STREAM AUDIO FROM THE CONTROL CENTER

1. On your Apple device, open the Control Center.
2. Tap and hold the audio card in the top-right corner of the screen, then tap the AirPlay icon .
3. Select your WiiM CI MOD S device.

STREAM AUDIO FROM AN APP

1. Open a music app (like Apple Music) and select a track to play.
2. Tap .
3. Select your WiiM CI MOD S device.

7.3 TIDAL CONNECT

TIDAL is a global music streaming platform bringing fans closer to artists through unique experiences and the highest sound quality. Stream your favorite music seamlessly from TIDAL App straight to your devices in the highest possible quality.

7.4 AMAZON MUSIC CAST

Cast your up to 192 kHz/24-bit, Ultra HD music directly from the native Amazon Music to WiiM CI MOD S in the highest possible quality. To use this, please login your Amazon account for Amazon Alexa on WiiM Home App.

8 ALL MUSIC IN ONE APP

With the free WiiM Home App, you can control your content and devices from one place. We support many popular music streaming services in the app such as Spotify, iHeartRadio, Tidal, Amazon Prime Music and Unlimited, SoundCloud, Qobuz, Pandora, Deezer, TuneIn & more to come. You can also play music stored in your mobile device, local network media servers or even personal cloud server.

The App supports the unified search across multiple music services and your local network for artist, track, station, playlist etc. It's a powerful tool to discover your favorite content from your online and local library.



The WiiM Home App supports equalization (EQ) with two options: 26 EQ presets or a 10-band graphical EQ. These EQ settings can be assigned to different sources, such as AUX in, online music, or Bluetooth streaming.

The App has twelve music presets that allow you to save your favorite station, playlist, album, etc., and access them with the preset button on the Pro or remote, or by using the App.

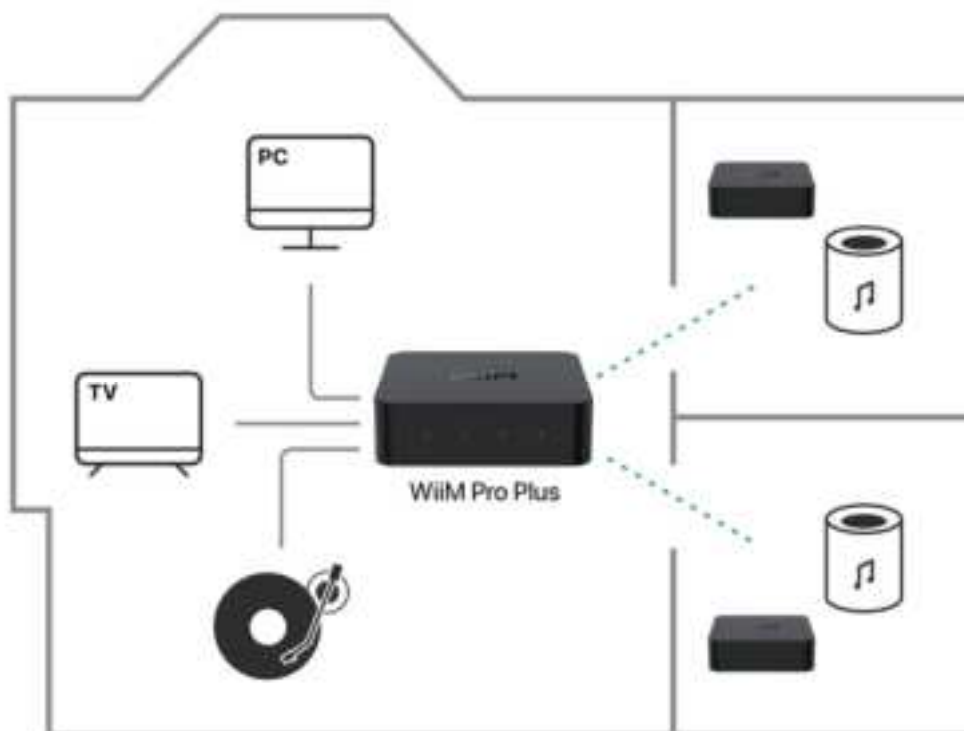
9 MULTIROOM AND STEREO PAIRING

With the WiiM CI MOD S, it's easy to build your wireless multiroom sound system with other AirPlay 2 speakers, Amazon Echo (or Alexa built-in devices) or Google Home. You can create even more flexible multiroom sound system with multiple WiiM CI MOD Ss, WiiM Minis and your existing audio devices. All types of audio input including WiFi, BT, analog Line in or digital SPDIF in, can be used as the audio source for the multiroom system.

In addition, you can group two speakers connected with WiiM CI MOD S as a stereo pair for a wider, more immersive sound stage. It supports all the four input options too.

Thus, it can work with almost your every music listening option.

9.1 LINKPLAY MULTIROOM/STEREO PAIRING



- Configure two or more devices.
- Open WiiM Home App.
- Select the device and click the plus sign in the upper right corner “+”
- Select the other WiiM CI MOD S, click “Done”
- Click the LR icon “L” and set the device to “L/R/LR”
- Select Browse tab, choose your music to play.

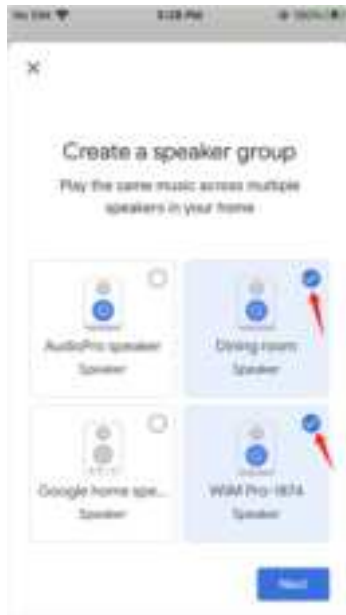
9.2 AMAZON ALEXA MULTIROOM

TIP: Download Amazon Alexa App and get ready with Echo or other Amazon devices.
For detailed steps please refer to 6.1.

9.3 MULTIROOM WITH CHROMECAST AUDIO DEVICES

You can group WiiM CI MOD S with other Google Home or Chromecast audio enabled devices to play the same music on all devices via the Google Home App.

- Enter Google Home App, tap the “+” in the top left corner
- Tap “Create speaker group” to create a speaker group
- Select the devices that are in the same network
- Give a group name
- Stream music to the group



10 AUDIO INPUT VIA LINE IN OR SPDIF IN

WiiM CI MOD S can be used as the preamplifier and network audio transmitter via WiFi or Ethernet. You can stream the analog audio input from CD player, vinyl recorder, TV or computer to another (or multiple) WiiM CI MOD S connected device.

To set up the WiiM CI MOD S with the line-in input:

1. Plug the line-in cable into the LINE IN port on the back of the WiiM CI MOD S.
2. Plug the other end of the cable into the record player.
3. In the WiiM Home app, Go to Browse > Select source on device > LINE IN, select the LINE IN for the source of the audio distribution.
4. Create a multiroom music group with your WiiM CI MOD S. On WiiM Home app, Go to Devices, select the WiiM CI MOD S connected with your LINE-IN device. Tap the group button (with “link” sign in a box) at the top right corner of the device box. Select the WiiM CI MOD S you wish to transmit the audio to.

Once completed, the music playing from the device plugged into the WiiM CI MOD S will play to your multiroom music group.

You can do the same for the SPDIF input port of WiiM CI MOD S if your source device has the digital audio output via SPDIF.

When used as a preamplifier, WiiM CI MOD S has the built-in EQ so you can process the audio input based on your taste and control the audio volume in the app remotely.

11 AUDIO OUTPUT VIA LINE /SPDIF/COAX/BT OUT

There are three ways to connect audio output of WiiM CI MOD S to your DAC, Amplifier or powered speaker, the analog LINE out and the digital optical (TOSLINK) or Coaxial port. If you want to have the bit perfect audio output, please use the digital audio output

and enable the fixed line-out level. You can do so from the device setting on the WiiM Home App.

Thus, there are two ways to control the volume of your system.

- Control volume from your AVR or amplifier (Fixed volume output)
- Control the volume from WiiM Home App

11.1 AUDIO OUTPUT VIA SPDIF/COAX/LINE OUT

- Depending on the output you prefer to use, plug the SPDIF/RCA/COAX end of the cable into the corresponding output port on the WiiM CI MOD S.
- Open the WiiM Home App on your iOS or Android device.
- Start playing on the output devices.

11.2 AUDIO OUTPUT VIA BT OUT (BT sourcing mode)

- Open the WiiM Home App on your iOS or Android device.
- Select Device Tab, tap the device setting gear icon.
- Tap the Audio Output setting and select Bluetooth to connect to an external Bluetooth devices (such as amplifier or speaker)
- Start playing music.

12 STREAM AUDIO TO WIIM CI MOD S WITH BLUETOOTH

Bluetooth wireless technology lets you stream music from mobile devices such as smartphones, tablets, TV and laptop computers. Before you can stream music from a device, you must first pair your mobile device to the WiiM CI MOD S. You can put the WiiM CI MOD S into the pairing mode by press and hold the volume '+' and '-' buttons together for 2 seconds.

The Bluetooth supports A2DP and AVRCP profile and both SBC and AAC codec are supported.

13 ADVANCED FEATURES

13.1 FIRMWARE UPDATES

- WiiM CI MOD S updates automatically when connected to your Wi-Fi network.
- Upgrades happen from 2:00-5:00 a.m. in your time zone. During the silent upgrade there will be no sound and no indication. Upon opening the app, you will see the latest updates made to WiiM CI MOD S.

13.2 DISABLE/ENABLE Wi-Fi

You can disable Wi-Fi if you want to connect your device with your network via Ethernet only. You can do so in the device setting and WiFi status page.

14 FAQ

If you experience problems with the audio streamer, try these solutions first:

- What can I do if I cannot find device?
 - Ensure that the network is available, and the device is powered on properly.
 - Restart the device.
 - Check the LED on the device is solid white.
 - If not, reconfigure the device to the network.
- What can I do if my device has no sound?
 - Ensure that the power amplifier is powered on normally.
 - Ensure that the 3.5mm (1/8") end of the cable and optical fiber line is working properly and the interface is not loose.
 - Make sure the amplifier and equipment are at a normal audible volume.
- What can I do if my device cannot power on normally?
 - Check the device status and ensure the power cable works properly.

SUPPORT

If you are unable to resolve your issue, please send us a ticket through the app or send us an email about the issue you're experiencing.

WiiM Home App: Settings > Feedback, Settings > FAQ

Website: wiimhome.com/FAQ

Email: support@wiimhome.com

Product User Guides: wiimhome.com/guides

RESETTING WIIM CI MOD S

Press and hold play/pause for 10s, afterwards you will hear the voice tone and see the light flashing with red and white.

Factory reset clears all source, volume, and network settings from the speaker and returns it back to the original factory settings.

IMPORTANT SAFETY INSTRUCTIONS

IMPORTANT, RETAIN FOR FUTURE REFERENCE: READ CAREFULLY

1. Read these instructions.
2. Keep these instructions.
3. Heed all warnings.
4. Follow all instructions.
5. Do not use this apparatus near water.
6. Clean only with a dry cloth.
7. Do not block any ventilation openings. Install in accordance with the manufacturer's instructions.
8. Do not install near any heat sources such as radiators, heat registers, stoves, or other apparatus (including amplifiers) that produce heat.

-
9. Protect the power cord from being walked on or pinched particularly at plugs, convenience receptacles, and the point where they exit from the apparatus.
 10. Only use attachments/accessories specified by the manufacturer.
 11. Unplug this apparatus during lightning storms or when unused for long periods of time
 12. Refer all servicing to qualified personnel. Servicing is required when the apparatus has been damaged in any way, such as external power supply, power-supply cord or plug is damaged, liquid has been spilled or objects have fallen into the apparatus, the apparatus has been exposed to rain or moisture, does not operate normally, or has been dropped.
 13. To reduce the risk of fire or electrical shock, do NOT expose this product to rain, liquids or moisture.
 14. Do NOT expose this product to dripping or splashing, and do not place objects filled with liquids, such as vases, on or near the product.
 15. Keep the product away from fire and heat sources. Do NOT place naked flame sources, such as lighted candles, on or near the product.
 16. Do NOT make unauthorized alterations to this product.
 17. Do NOT use in vehicles or boats.
 18. Use this product only with the power supply provided.
 19. Where the mains plug or an appliance coupler is used as the disconnect device, the disconnect device shall remain readily operable.
 20. Due to ventilation requirements, does not recommend placing the product in a confined space such as in a wall cavity or in an enclosed cabinet.
 21. Contains small parts which may be a choking hazard. Not suitable for children under age 3.
 22. This product contains magnetic material. Consult your physician on whether this might affect your implantable medical device.
 23. Do not place or install the bracket or product near any heat sources, such as fireplaces, radiators, heat registers or other apparatus (including amplifiers) that produce heat.

CE/FCC/IC Statements

FCC Statement:

This device complies with part 15 of the FCC rules. Operation is subject to the following two conditions:

- (1) this device may not cause harmful interference, and
- (2) this device must accept any interference received, including interference that may cause undesired operation.

NOTE: The manufacturer is not responsible for any radio or TV interference caused by unauthorized modifications or changes to this equipment. Such modifications or changes

could void the user's authority to operate the equipment.

NOTE: This equipment has been tested and found to comply with the limits for a Class B digital device, pursuant to part 15 of the FCC Rules. These limits are designed to provide reasonable protection against harmful interference in a residential installation. This equipment generates uses and can radiate radio frequency energy and, if not installed and used in accordance with the instructions, may cause harmful interference to radio communications. However, there is no guarantee that interference will not occur in a particular installation. If this equipment does cause harmful interference to radio or television reception, which can be determined by turning the equipment off and on, the user is encouraged to try to correct the interference by one or more of the following measures:

- Reorient or relocate the receiving antenna.
- Increase the separation between the equipment and receiver.
- Connect the equipment into an outlet on a circuit different from that to which the receiver is connected.
- Consult the dealer or an experienced radio/TV technician for help.

RF Exposure Information: To maintain compliance with FCC RF exposure requirements, use the product that maintain a 20cm separation distance between the user's body and the host. MPE limit for RF exposure at prediction frequency and satisfy RF exposure compliance.

FCC ID:2BABF-ASR013
Contain FCC ID:2ANOG-A98M

CE Statement:

RF exposure information: The Maximum Permissible Exposure (MPE) level has been calculated based on a distance of d=20 cm between the device and the human body. To maintain compliance with RF exposure requirement, use product that maintain a 20cm distance between the device and human body.

Do not use the device in the environment at too high or too low temperature, never expose the device under strong sunshine or too wet environment.
The suitable temperature for the product and accessories is 0°C-40°C.

Operating frequency range and maximum transmit power

Bluetooth: 2402MHz ~ 2480MHz, <9.11 dBm EIRP
WLAN 2.4GHz: 2412MHz ~ 2472MHz, <20 dBm EIRP
WLAN 5GHz: 5150MHz ~ 5825MHz, <20 dBm EIRP

The device for operation in the band 5150~5350 MHz is only for indoor use to reduce the potential for harmful interference to co-channel mobile satellite systems.

	AT	BE	BG	CH	CY	CZ	DE
	DK	EE	EL	ES	FI	FR	HR
	HU	IE	IS	IT	LI	LT	LU
	LV	MT	NL	NO	PL	PT	RO
	SE	SI	SK	TR	UK(NI)		

This product can be used across EU member states.

EU Regulatory Conformance

Hereby, Linkplay Technology Inc. Corporation declares that this device is in compliance with the essential requirements and other relevant provisions of Directive 2014/53/EU.



IC Statement:

This device complies with Industry Canada licence-exempt RSS standard(s). Operation is subject to the following two conditions:

- (1) this device may not cause interference, and
- (2) this device must accept any interference, including interference that may cause undesired operation of the device.

Under Industry Canada regulations, this radio transmitter may only operate using an antenna of a type and maximum (or lesser) gain approved for the transmitter by Industry Canada. To reduce potential radio interference to other users, the antenna type and its gain should be so chosen that the equivalent isotropically radiated power (e.i.r.p.) is not more than that necessary for successful communication.

Radiation Exposure Statement:

This equipment complies with IC radiation exposure limits set forth for an uncontrolled environment. This equipment should be installed and operated with minimum distance 20cm between the radiator & your body.

The device for operation in the band 5150–5250 MHz is only for indoor use to reduce the potential for harmful interference to co-channel mobile satellite systems.

Le présent appareil est conforme aux CNR d'Industrie Canada applicables aux appareils radioexempts de licence. L'exploitation est autorisée aux deux conditions suivantes

- (1) l'appareil ne doit pas produire de brouillage, et
- (2) l'utilisateur de l'appareil doit accepter tout brouillage radioélectrique subi, même si le brouillage est susceptible d'en compromettre le fonctionnement.

Conformément à la réglementation d'Industrie Canada, le présent émetteur radio peut fonctionner avec une antenne d'un type et d'un gain maximal (ou inférieur) approuvé pour l'émetteur par Industrie Canada. Dans le but de réduire les risques de brouillage radioélectrique à l'intention des autres utilisateurs, il faut choisir le type d'antenne et son gain de sorte que la puissance isotrope rayonnée équivalente (p.i.r.e.) ne dépasse pas l'intensité nécessaire à l'établissement d'une communication satisfaisante.

Déclaration d'exposition aux radiations:

Cet équipement est conforme aux limites d'exposition aux rayonnements IC établies pour un environnement non contrôlé. Cet équipement doit être installé et utilisé avec un minimum de 20 cm de distance entre la source de rayonnement et votre corps.

IC:30828-ASR013

Contains IC:23153-A98M