

Please scan the QR code to view the English manual.

二次元コードを読んで、日本語の説明書を見てください。

QR코드를 스캔하여 한국어 설명서를 보십시오.

กรุณาสแกนรหัสภาษาไทยด้วย

Veillez scanner le code qr pour voir le manuel d'instruction en français.

Bitte loggen sie code # ein, prüfen sie die deutsche anleitung

Пожалуйста, сканируйте двухмерный код и проверьте русскую инструкцию.

Escanee el código qr para ver el manual de instrucciones en español.

Digitalize o código qr para ver o manual de instruções em português.

Scannerizzare il codice qr e controllare le istruzioni per l'uso in italiano.

Silakan imbas kode QR untuk melihat manual bahasa Indonesia.

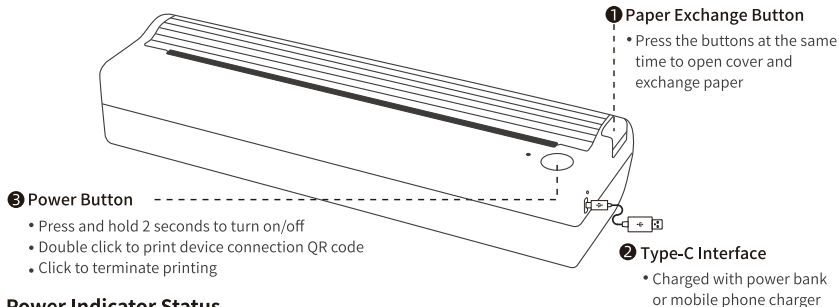
Sila imbas kod QR dan periksa arahan dalam bahasa Malay.

Xin vui lòng quét mã qr, xem thông số kỹ thuật việt nam.

Mangyaring i-scan ang QR code at suriin ang mga tagubilin sa wikang Pilipino.



Product Sketch



Power Indicator Status

- White light on: normal status
- Blue light on: bluetooth is connected
- Red light on: cover opened/no paper/over-heat/charging
- Red light flashing: low battery, please charge in time

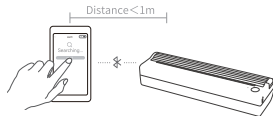
App Download

Please search for [PeriPage] on Google Play or App Store to download and install the App.



Video Guide

Bluetooth Printing

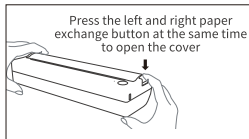


- 1 Press and hold the power button for 2 seconds to turn on the printer.
- 2 Open the [PeriPage] App, enter the interface of connecting the device, and click [Bluetooth Printing] to connect the printer. Or press the power button twice to print the QR code, then connect the printer by scanning the code.
(Tips: Don't connect printer in the mobile phone bluetooth settings.)
- 3 After the printer is connected, open the function provided by the App to operate Bluetooth printing.

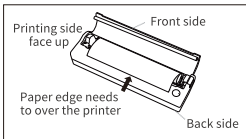
Computer Printing

- ① Press and hold the power button for 2 seconds to turn on the printer. Connect the printer and computer with the original Type-C data cable.
- ② Please visit the official website, www.ileadtek.com, to download and install the print driver for editing and printing.
- ③ After the driver is installed, select this printer when print documents on the computer.

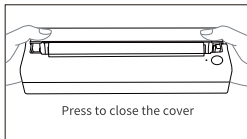
Replace Paper



① Open The Cover

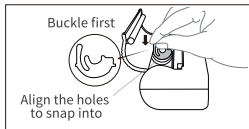


② Put Paper

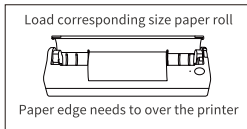


③ Close The Cover

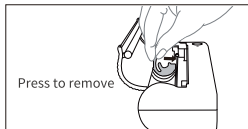
Paper Holder Installation/Removal



①



②



③

Charging Instructions

- Input: 5V=2A. It is recommended to use a mobile phone charger for charging.
- It is recommended to fully charge the battery before use.
- If the printer has not been used for an extended period, please charge it every three months to prevent potential charging issues caused by long-term natural wear and tear of the lithium batteries.

Notes

If the incorrect battery type is replaced, there may be a risk of explosion. Do not expose the battery to sources of excessive heat such as sunlight, fire, or similar, don't expose it to extremely low pressure, as it may lead to explosions or leakage of flammable liquids or gases.



The paper tearing blade has a sharp edge. Do not touch it to prevent getting cut.

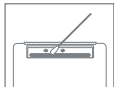


After printing, avoid direct contact with the print head to prevent overheating and potential scalding. Wait for at least thirty minutes after turning off the power before attempting to touch the print head.



The product is not suitable for children!

Clean The Printer Head



- 1 Please turn off the printer and open the printer cover and take out the paper;
- 2 Dip a cotton cloth or cotton swab with medical alcohol, and wipe gently along the center to the periphery of the printer head;
- 3 After cleaning the printer head, do not use the printer immediately. Please wait for 1 to 2 minutes, use the printer after the alcohol has completely evaporated.

Federal Communications Commission (FCC) Statement.

This device complies with part 15 of the FCC Rules. Operation is subject to the following two conditions:

(1) This device may not cause harmful interference, and

(2) this device must accept any interference received,

including interference that may cause undesired operation. Note: This equipment has been tested and found to comply with the limits for a Class B digital device, pursuant to part 15 of the FCC Rules. These limits are designed to provide Reasonable protection against harmful interference in a residential installation. This equipment generates, uses and can radiate radio frequency energy and, if not installed and used in accordance with the instructions, may cause harmful interference to radio communications. However, there is no guarantee that interference will not occur in a particular installation. If this equipment does cause harmful interference to radio or television reception, which can be determined by turning the equipment off and on, the user is encouraged to try to correct the interference by one or more of the following measures:

- Reorient or relocate the receiving antenna.
- Increase the separation between the equipment and receiver.
- Connect the equipment into an outlet on a circuit different from that to which the receiver is connected.
- Consult the dealer or an experienced radio/TV technician for help.

Warning: Changes or modifications made to this device not expressly approved by Xiamen Ilead Tek Co., Ltd. may void the FCC authorization to operate this device. Note: The manufacturer is not responsible for any radio or TV interference caused by unauthorized modifications to this equipment. Such modifications could void the user's authority to operate the equipment.

RF exposure statement:

This device complies with FCC RF radiation exposure limits set forth for an uncontrolled environment.

This transmitter must not be co-located or operating in conjunction with any other antenna or transmitter.

This equipment should be installed and operated with minimum distance 20cm between the radiator &you body.



Xiamen iLead Tek Co., Ltd.

Unit 2101, No.50 Chengyi North Street,
Software Park Phase III, Xiamen, Fujian, P.R.C

☎ www.ileadtek.com

✉ service@ileadtek.com

☎ (+86)400-8550-520

V1.0