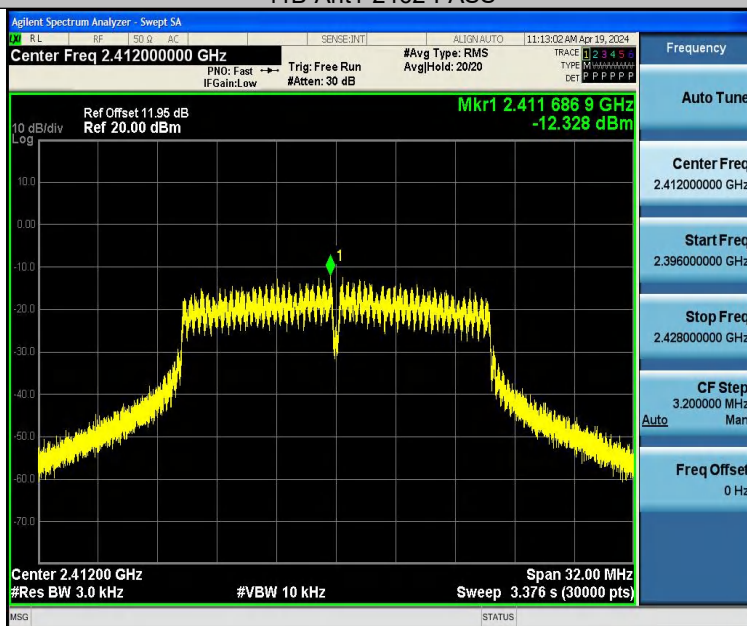
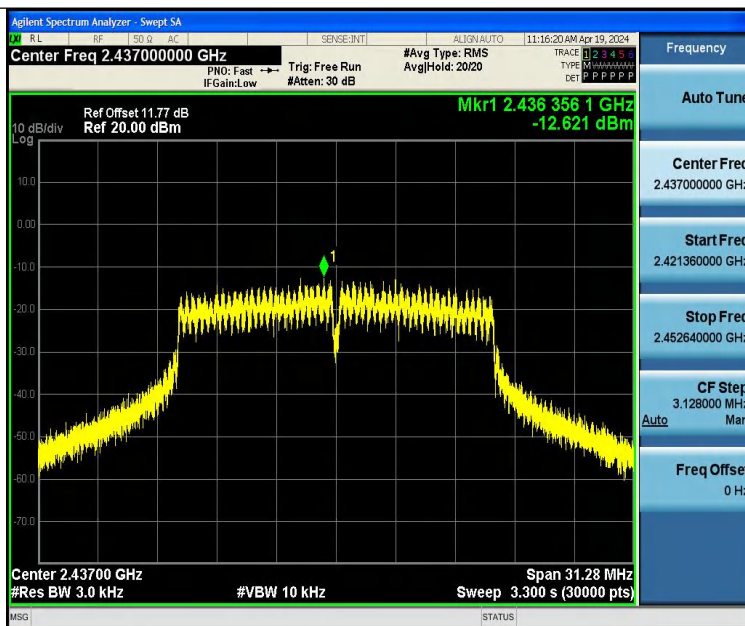




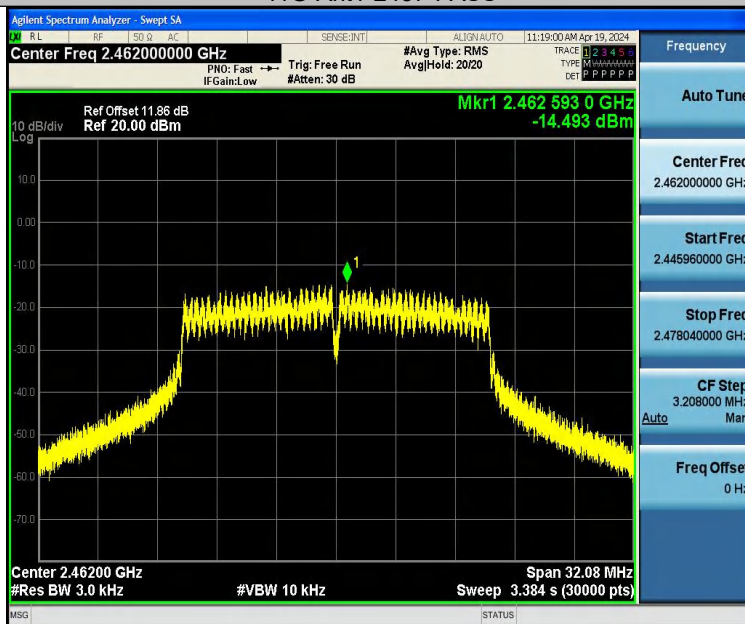
11B-Ant1-2462-PASS



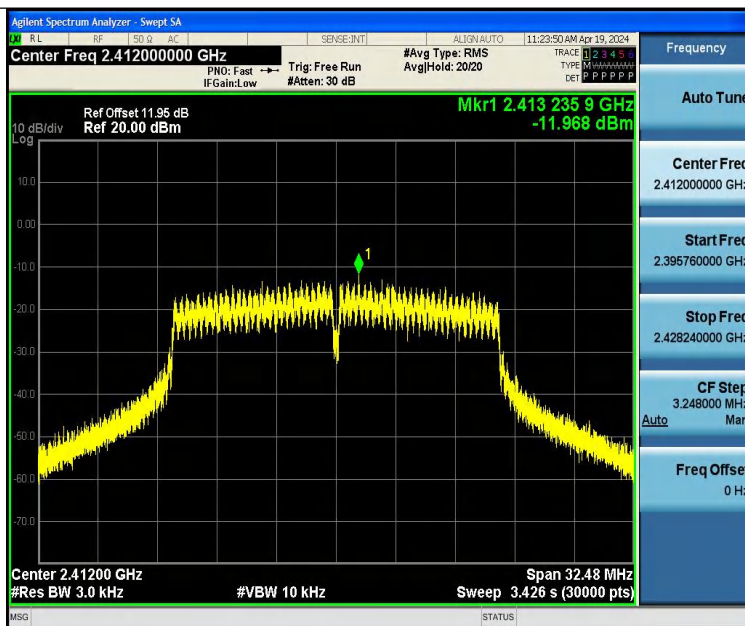
11G-Ant1-2412-PASS



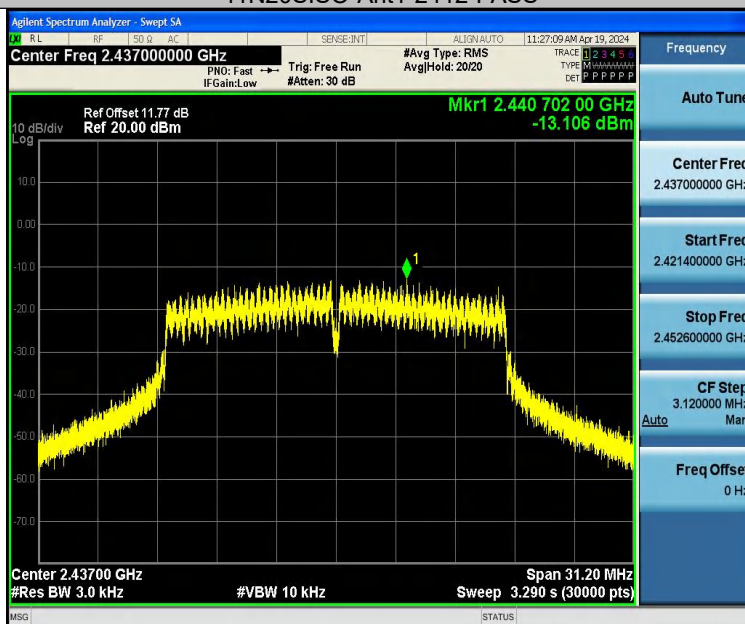
11G-Ant1-2437-PASS



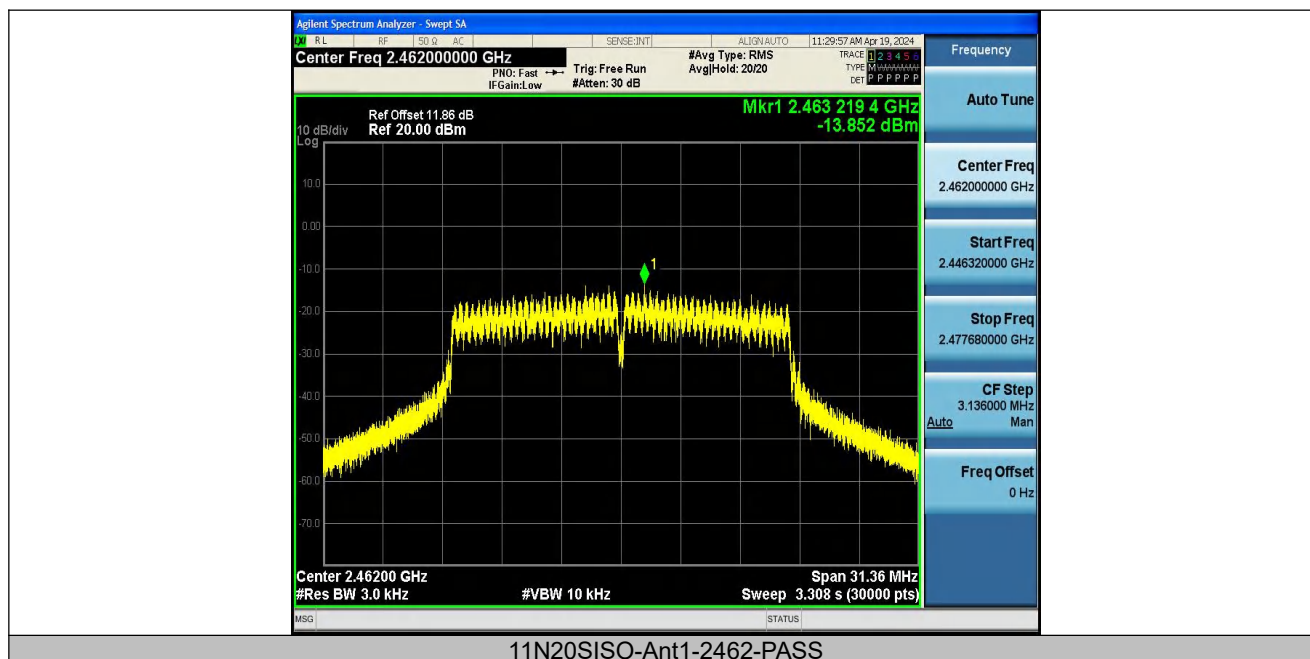
11G-Ant1-2462-PASS



11N20SISO-Ant1-2412-PASS



11N20SISO-Ant1-2437-PASS





12 Antenna Application

12.1 Antenna Requirement

For intentional device, according to FCC 47 CFR Section 15.203, an intentional radiator shall be designed to ensure that no antenna other than that furnished by the responsible party shall be used with the device. And according to FCC 47 CFR Section 15.247 (b), if transmitting antennas of directional gain greater than 6dBi are used, the power shall be reduced by the amount in dB that the directional gain of the antenna exceeds 6dBi.

12.2 Result

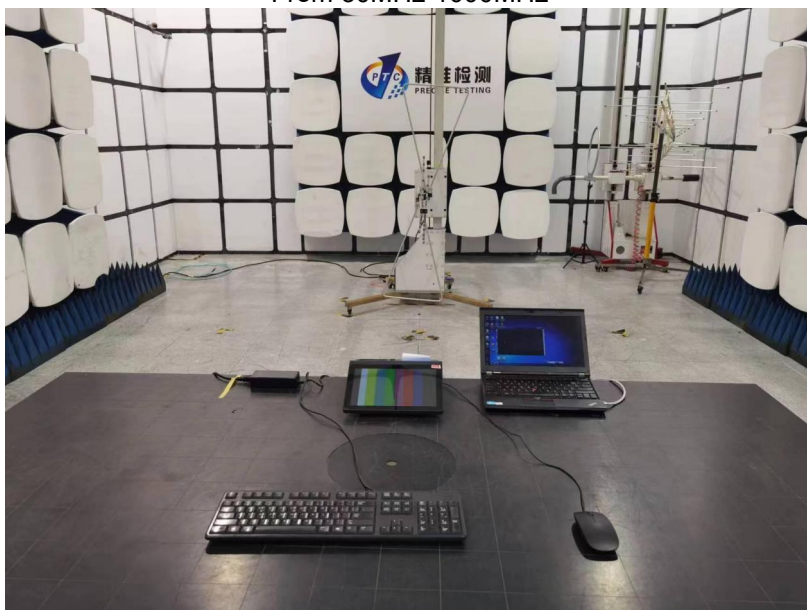
The EUT'S antenna, permanent attached antenna, is PCB Antenna. The antenna's gain is 1.95 dBi and meets the requirement.

13 Test Setup

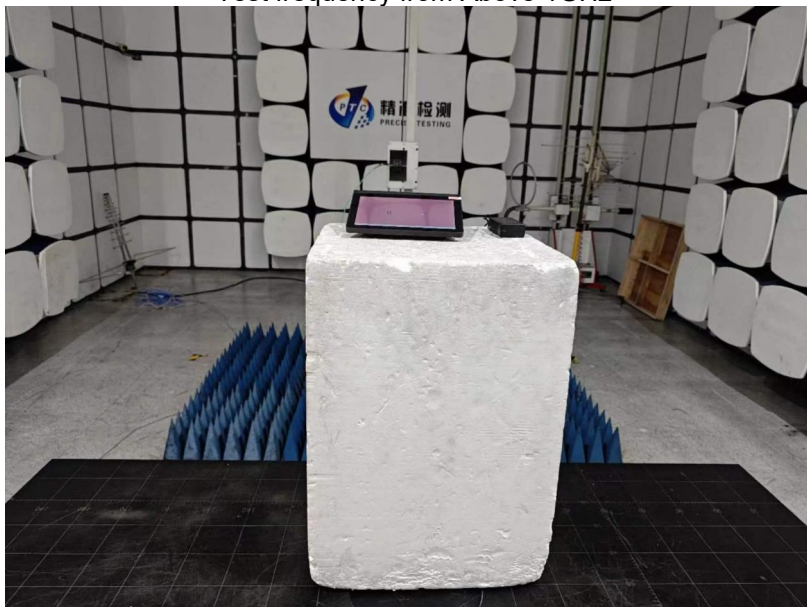
Conducted Emissions



Radiated Spurious Emissions
From 30MHz-1000MHz



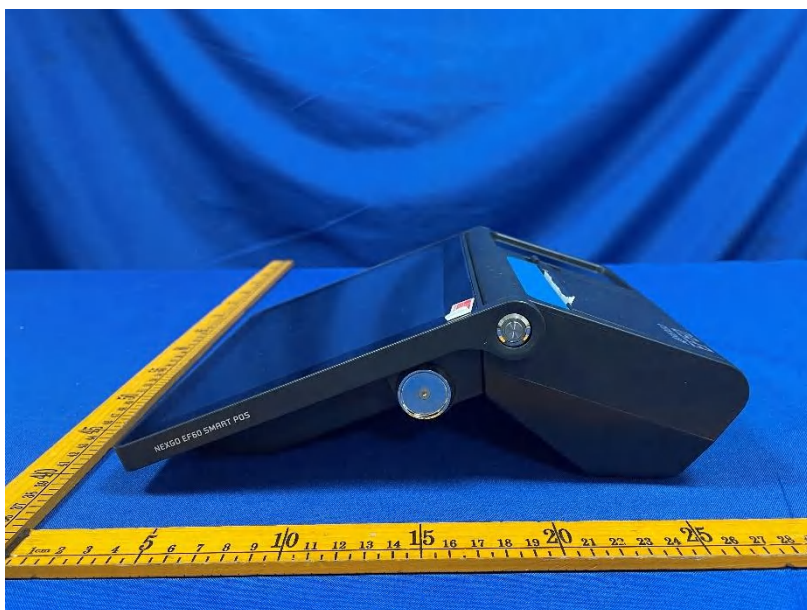
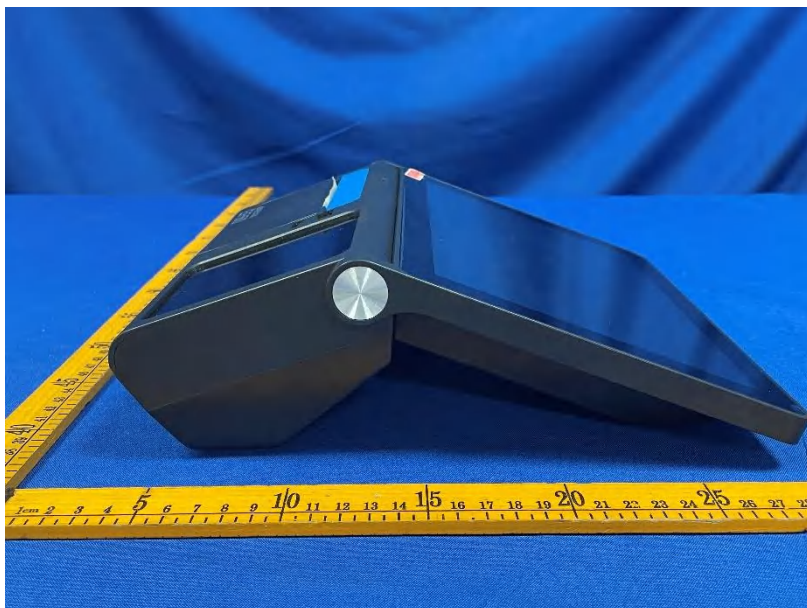
Test frequency from Above 1GHz



14 EUT PHOTOS

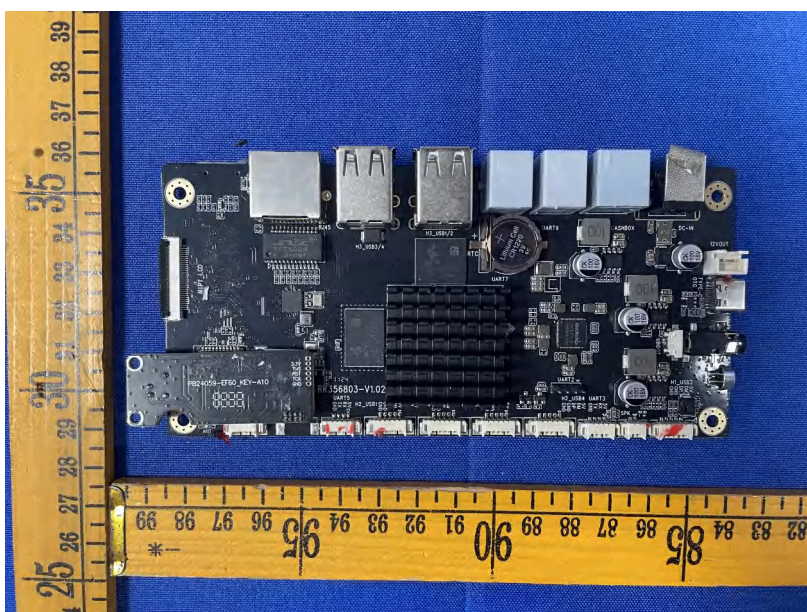
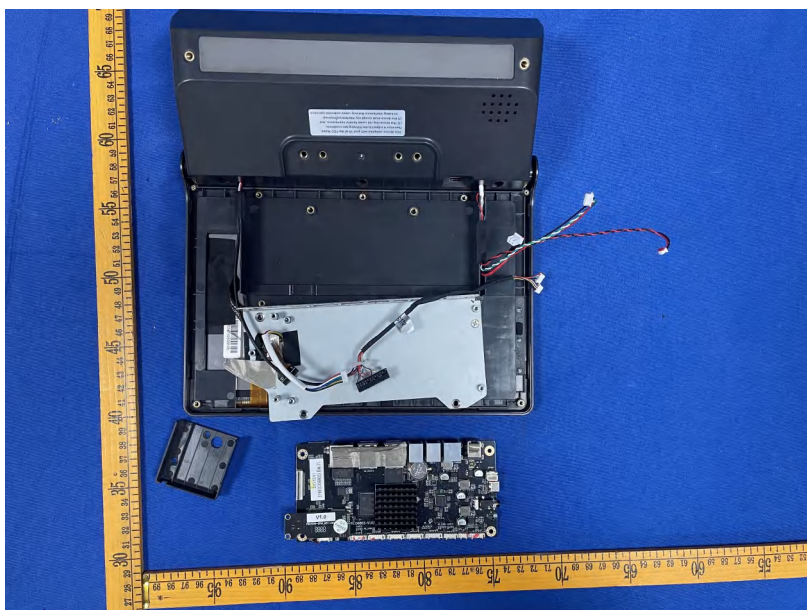


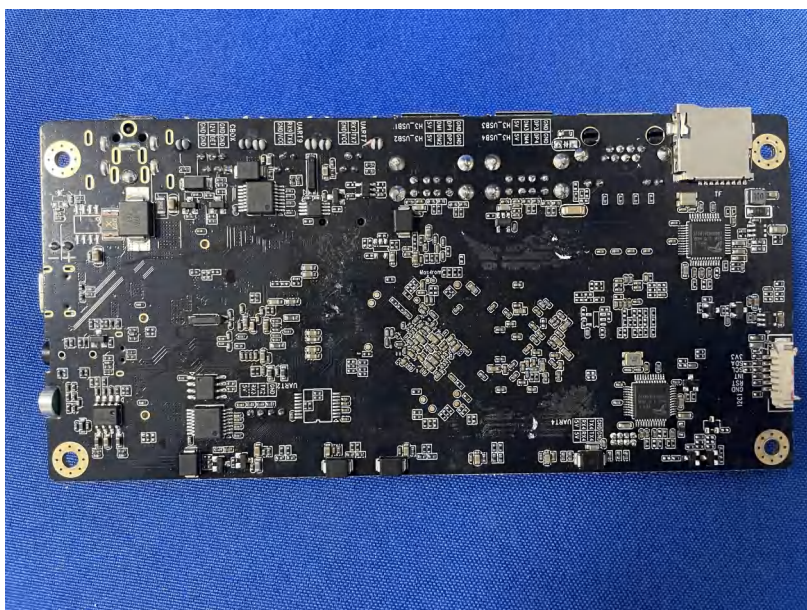
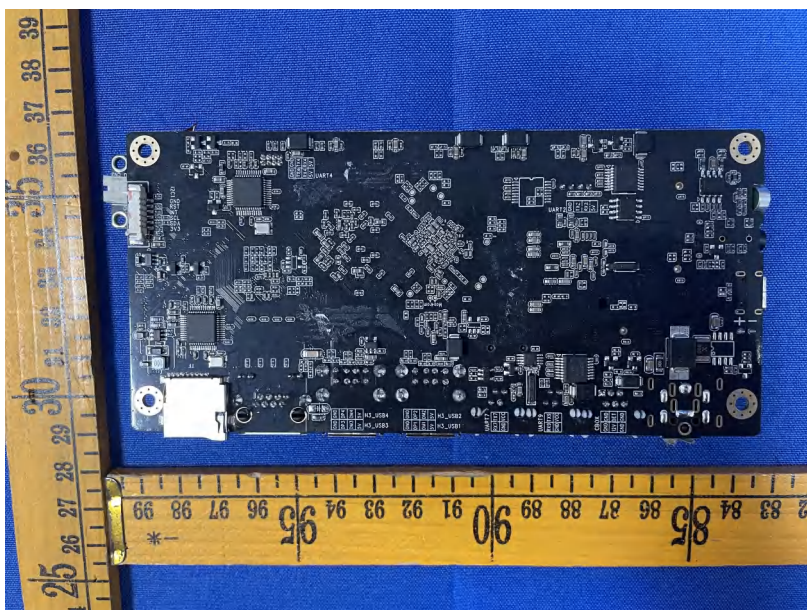


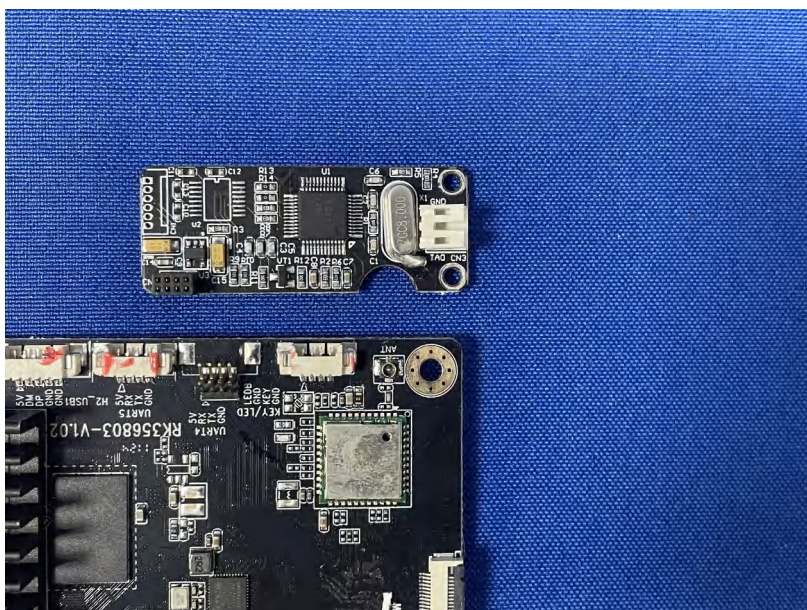
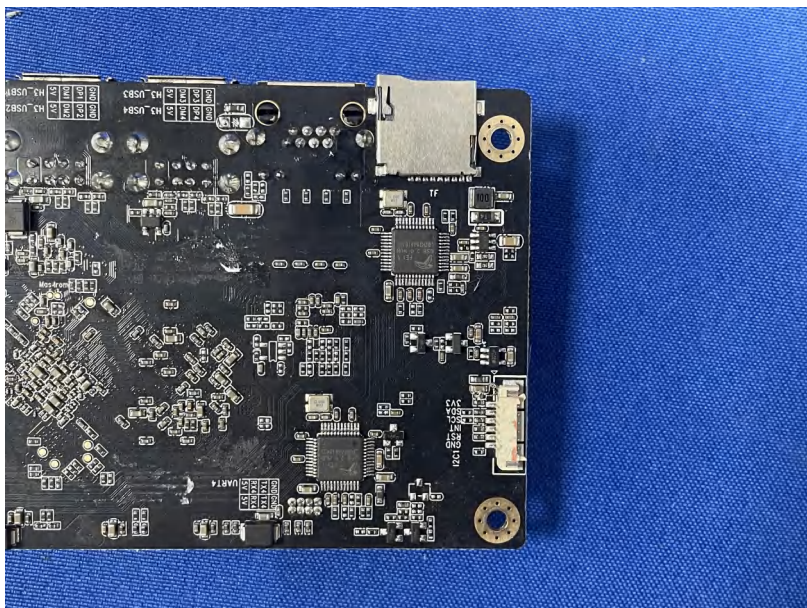


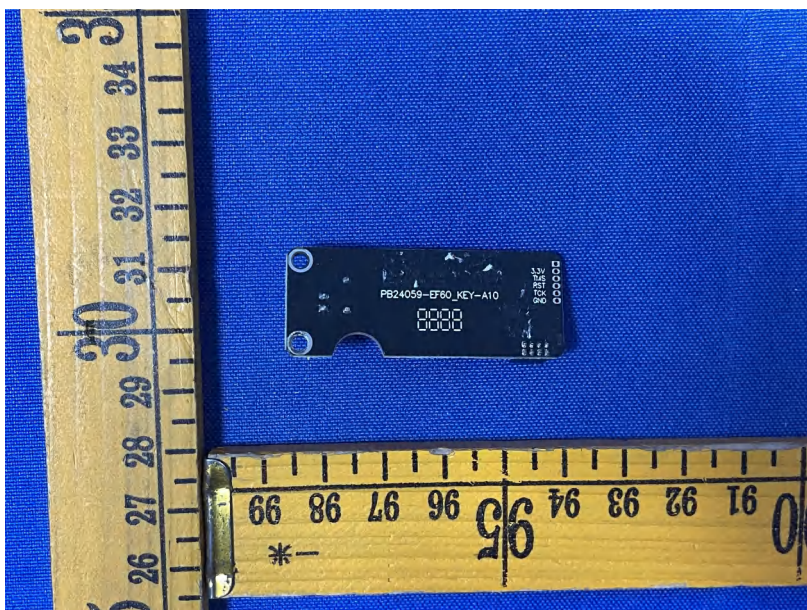
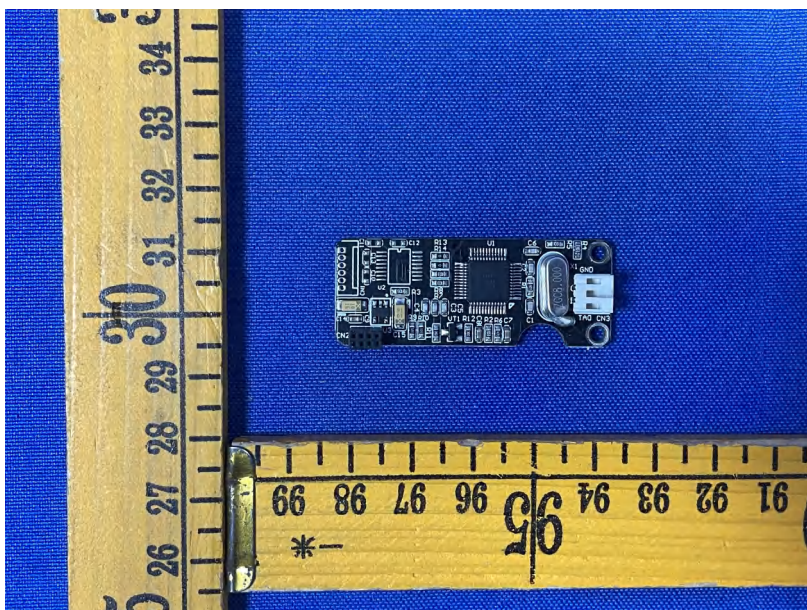


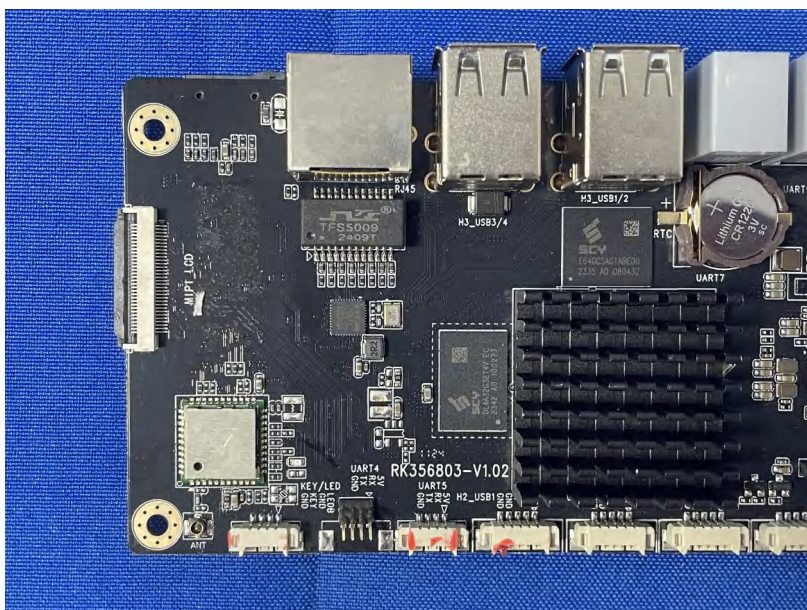
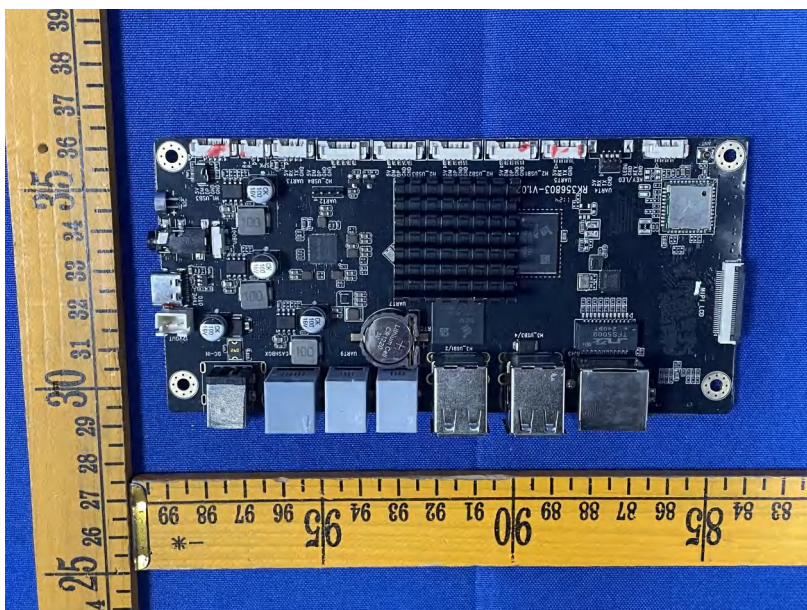


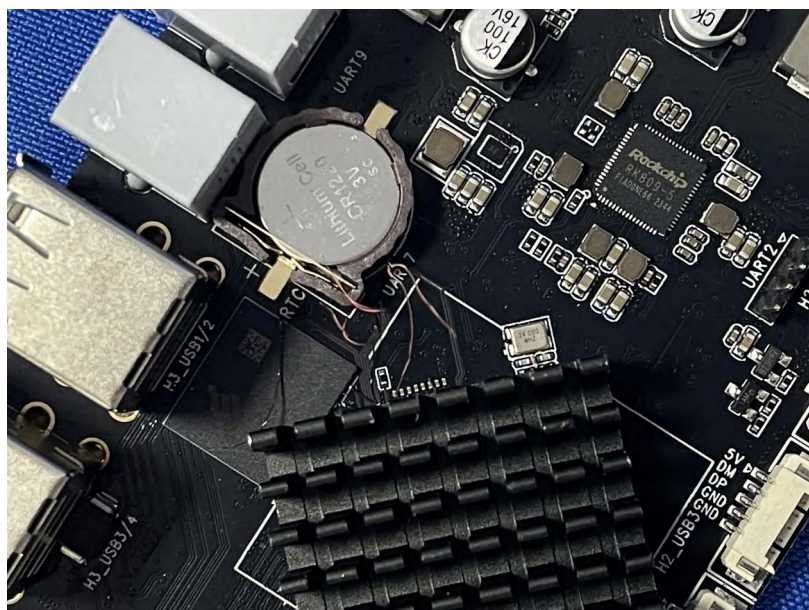
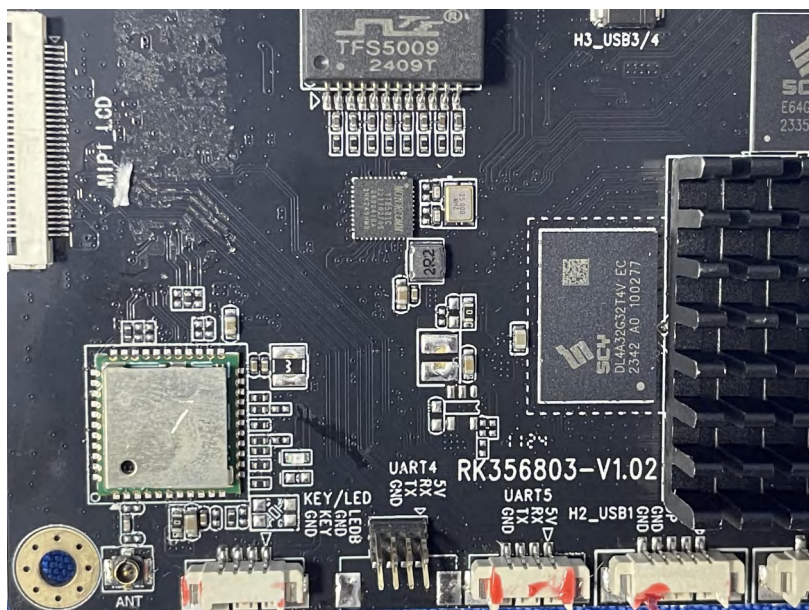


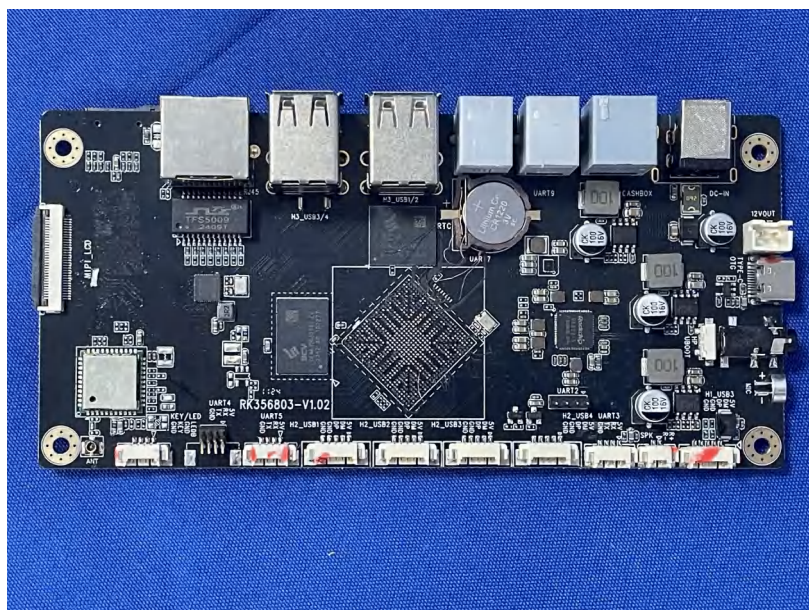
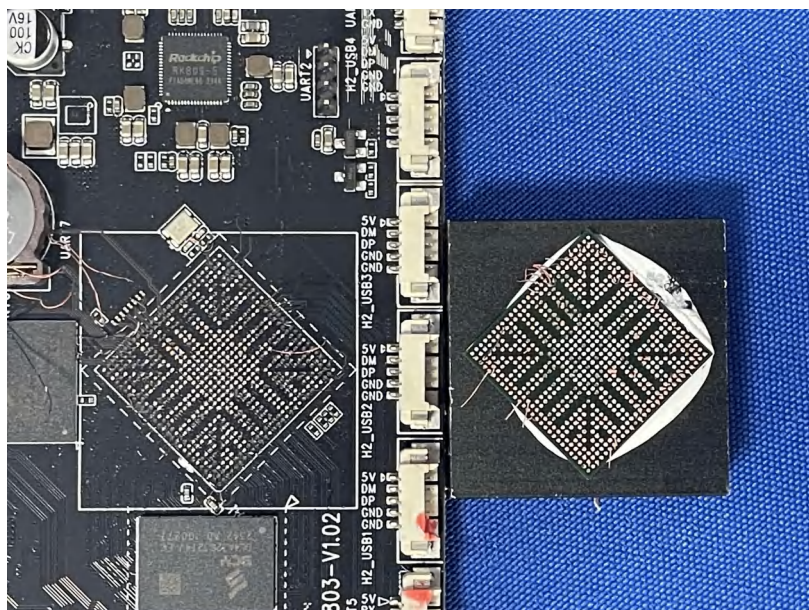


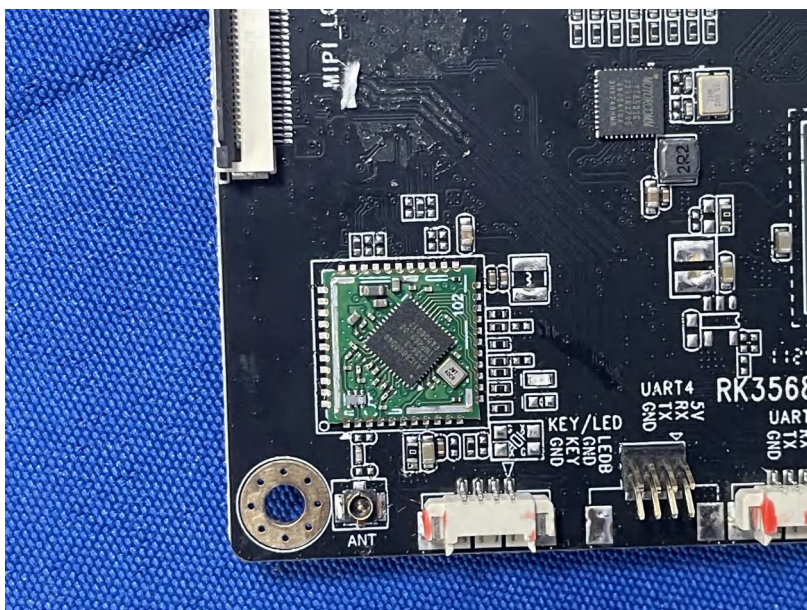












*****THE END REPORT*****