

US Tech Test Report:  
FCC ID:  
Test Report Number:  
Issue Date:  
Customer:  
Model:

FCC Part 95  
KE3-3003791  
24-0045  
June 17, 2024  
Radio Systems Corporation  
RFA-635

## INTERNAL PHOTOGRAPHS



**Figure 1. Top Cover Removed**

Note: Circled in red is a PCB for programming purposes only for Intentional radiated testing.

US Tech Test Report:  
FCC ID:  
Test Report Number:  
Issue Date:  
Customer:  
Model:

FCC Part 95  
KE3-3003791  
24-0045  
June 17, 2024  
Radio Systems Corporation  
RFA-635

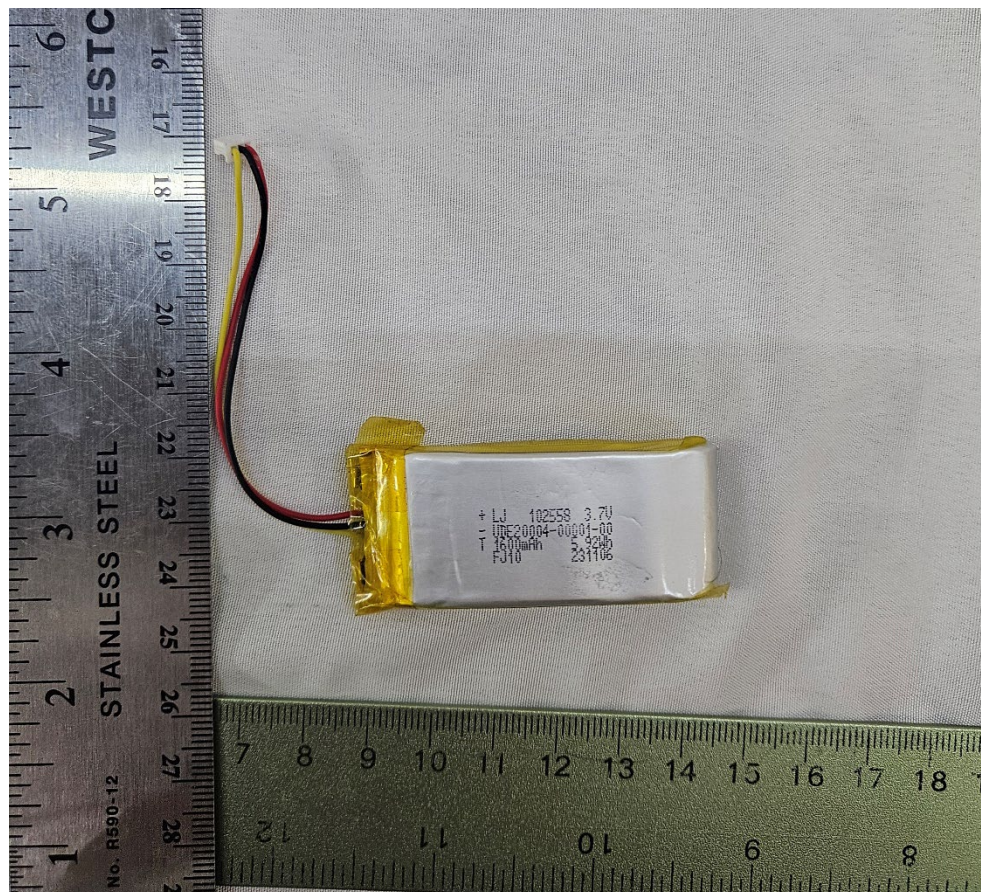


Figure 2. Battery Label



US Tech Test Report:  
FCC ID:  
Test Report Number:  
Issue Date:  
Customer:  
Model:

FCC Part 95  
KE3-3003791  
24-0045  
June 17, 2024  
Radio Systems Corporation  
RFA-635



**Figure 3. Main PCB**

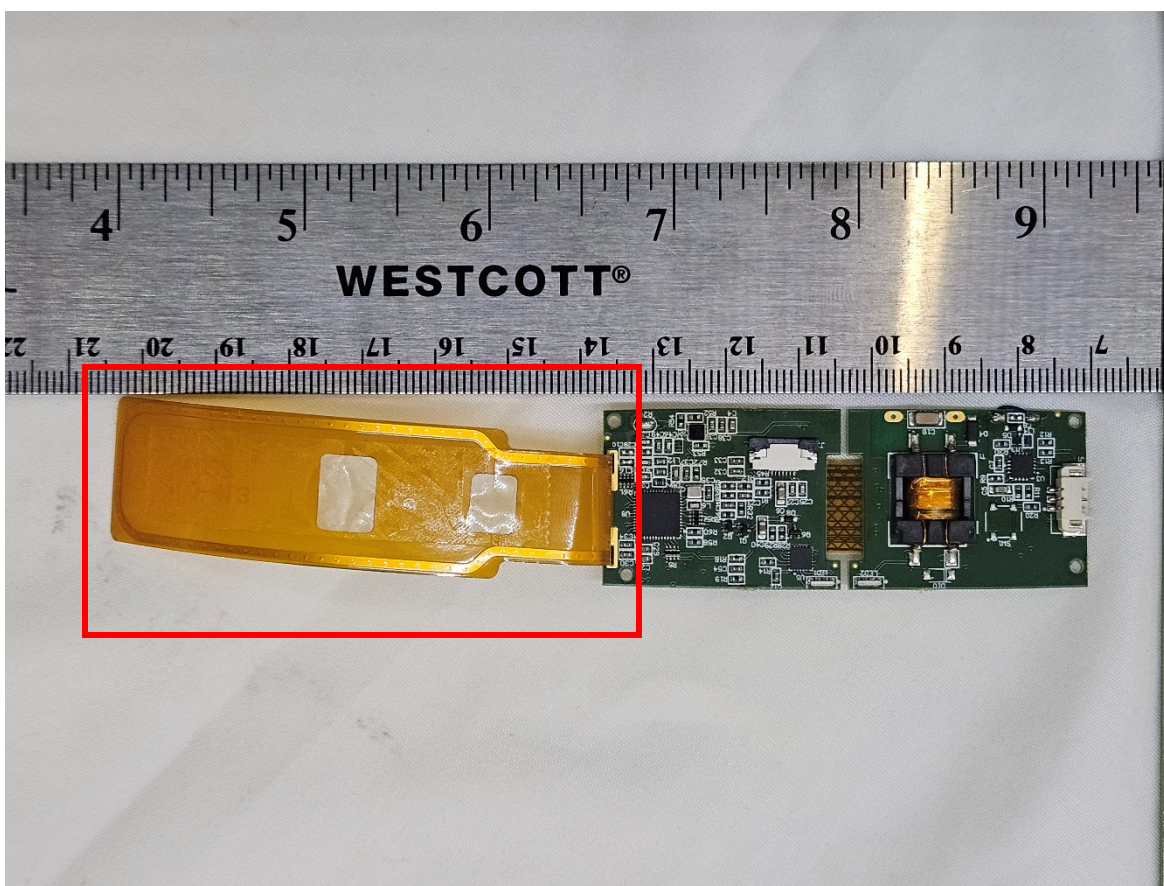
Note: Circled in red is a PCB for programming purposes only for Intentional radiated testing.

US Tech Test Report:  
FCC ID:  
Test Report Number:  
Issue Date:  
Customer:  
Model:

FCC Part 95  
KE3-3003791  
24-0045  
June 17, 2024  
Radio Systems Corporation  
RFA-635



**Figure 4. Main PCB Back and Antenna**



**Figure 5. Main PCB and Antenna Removed**

Note: 151.82 MHz antenna identified above.



US Tech Test Report:  
FCC ID:  
Test Report Number:  
Issue Date:  
Customer:  
Model:

FCC Part 95  
KE3-3003791  
24-0045  
June 17, 2024  
Radio Systems Corporation  
RFA-635

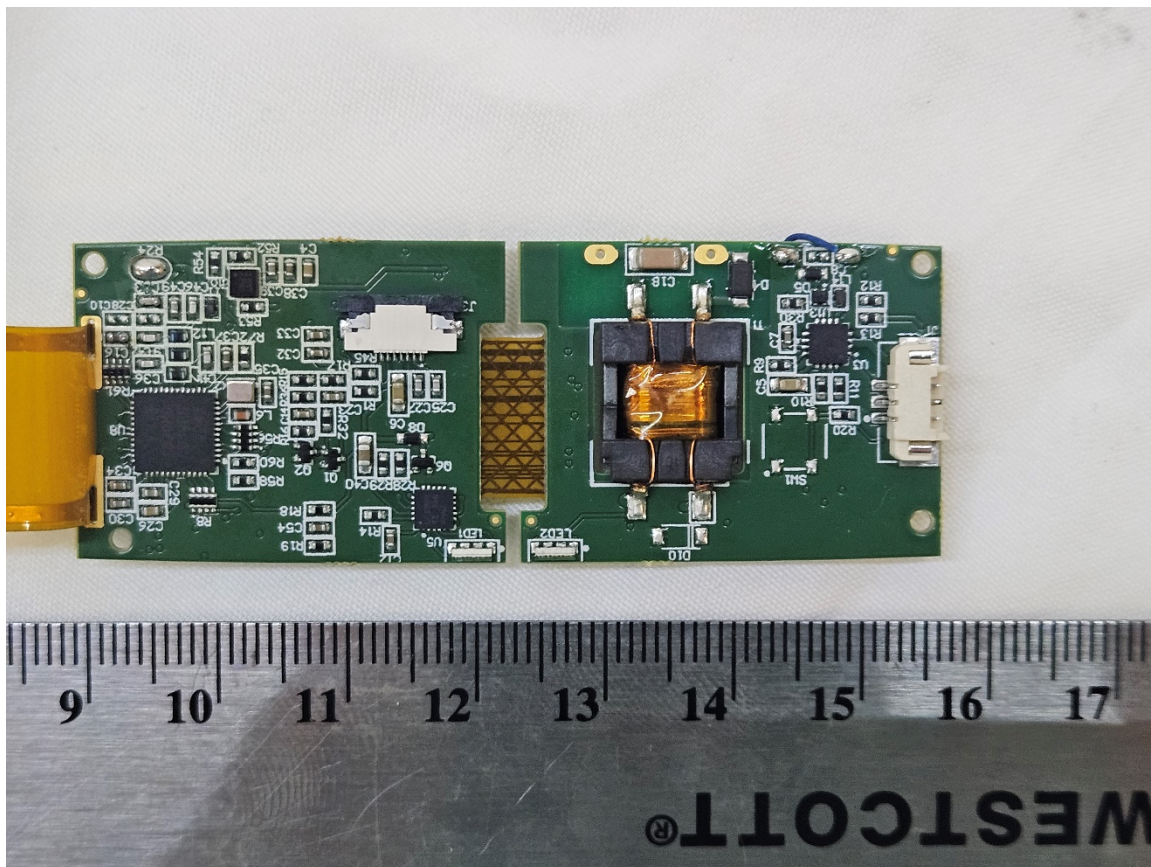
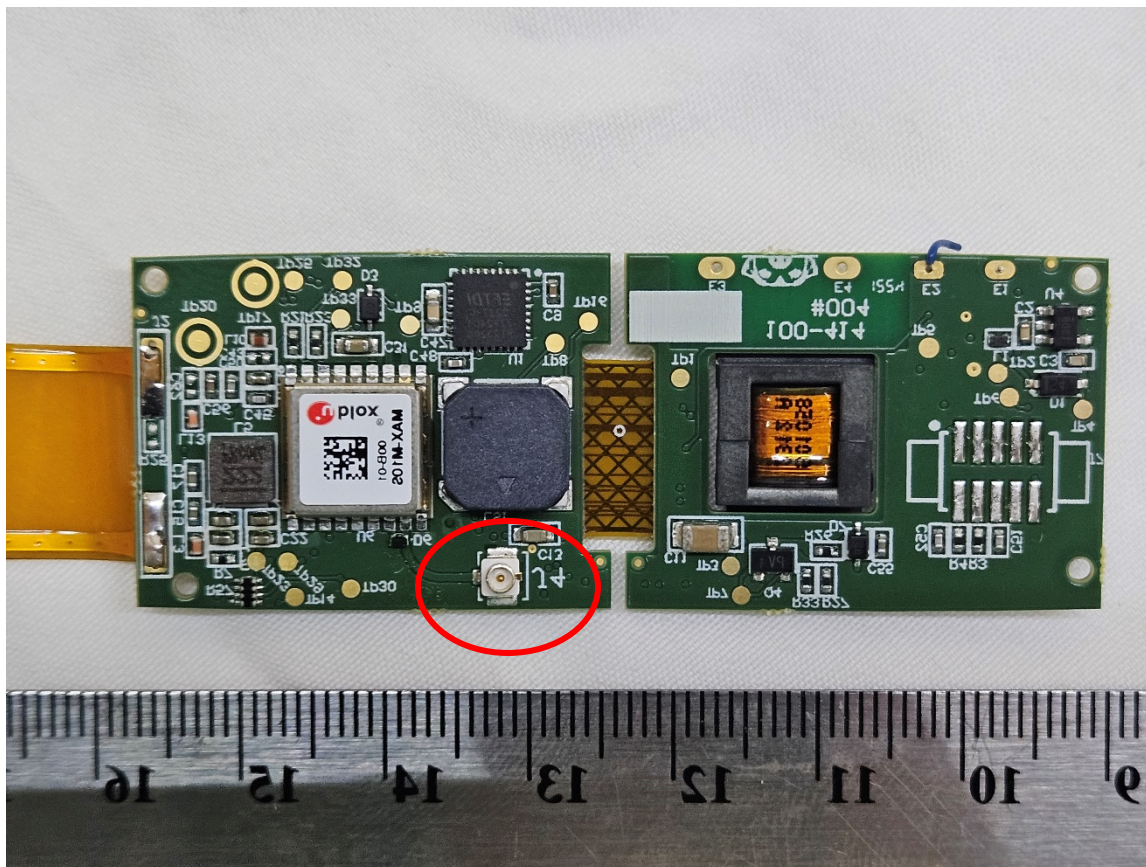


Figure 6. Main PCB Front Close up

US Tech Test Report:  
FCC ID:  
Test Report Number:  
Issue Date:  
Customer:  
Model:

FCC Part 95  
KE3-3003791  
24-0045  
June 17, 2024  
Radio Systems Corporation  
RFA-635



**Figure 7. Main PCB Back Close up**

Note: GPS antenna port circled in RED

US Tech Test Report:  
FCC ID:  
Test Report Number:  
Issue Date:  
Customer:  
Model:

FCC Part 95  
KE3-3003791  
24-0045  
June 17, 2024  
Radio Systems Corporation  
RFA-635



**Figure 8. Enclosure Empty**

Note: GPS antenna RF cable.