

System Performance Check Report for CLA-13 - SN1008

Exposure Conditions

Frequency [MHz]   Channel Number	13.000   0	TSL Permittivity	54.7
Group   UID	CW   0--	TSL Conductivity [S/m]	0.687
Conversion Factor	18.85	Phantom Section   TSL	Flat   Head Simulating Liquid

Hardware Setup

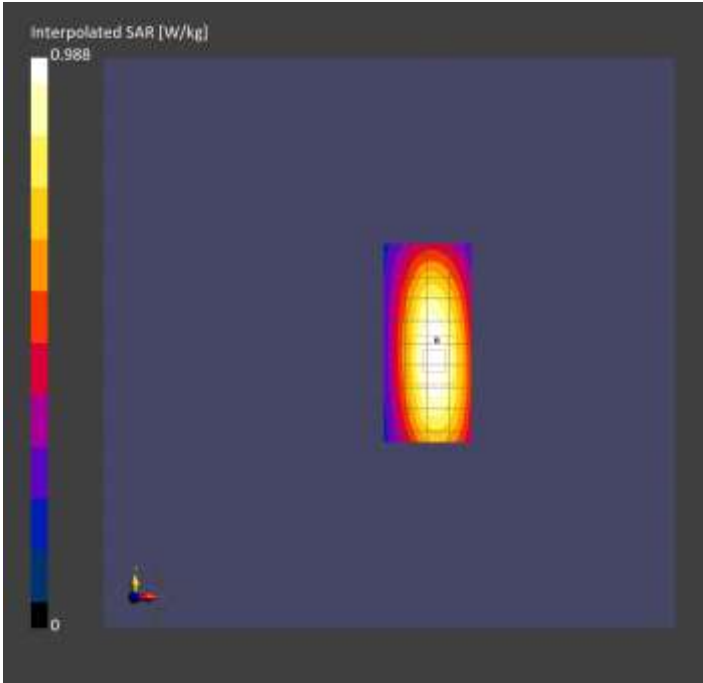
Probe   Calibration Date	EX3DV4 - SN3989 (Sensor X Disabled)   2024-01-09	Phantom	ELI V8.0 (20deg probe tilt)
DAE   Calibration Date	DAE4 Sn1674   2024-05-13	TSL Type	HBBL4-250V3
Software Version	16.4.0.5005		

Scans Setup

	Area Scan	Zoom Scan
Grid Extents [mm]	40.0 x 90.0	30.0 x 30.0 x 30.0
Grid Steps [mm]	10.0 x 15.0	6.0 x 6.0 x 1.5
Sensor Surface [mm]	3.0	1.4
Graded Grid	N/A	Yes
M2/M1 [%]		74.5
Dist 3dB Peak [mm]		15.6

Measurement Results

	Area Scan	Zoom Scan
psSAR1g [W/Kg]	0.510	0.490
psSAR10g [W/Kg]	0.414	0.305
Power Drift [dB]	0.00	0.00



System Performance Check Report for D3500V2 - SN1060

Exposure Conditions

Frequency [MHz]   Channel Number	3500.000   0	TSL Permittivity	39.2
Group   UID	CW   0--	TSL Conductivity [S/m]	2.72
Conversion Factor	6.86	Phantom Section   TSL	Flat   Head Simulating Liquid

Hardware Setup

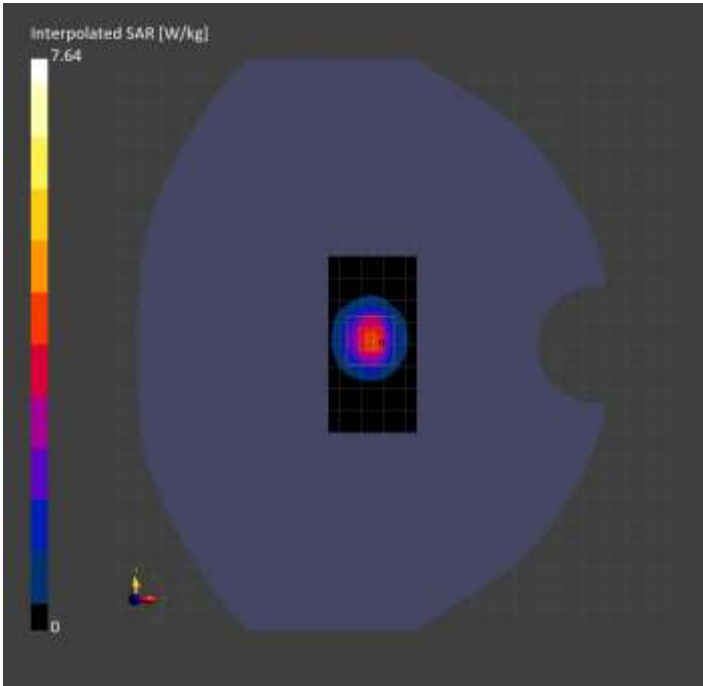
Probe   Calibration Date	EX3DV4 - SN3989 (Sensor X Disabled)   2024-01-09	Phantom	Twin-SAM V8.0 (30deg probe tilt)
DAE   Calibration Date	DAE4 Sn1674   2024-05-13	TSL Type	HBBL-600-10000
Software Version	16.4.0.5005		

Scans Setup

	Area Scan	Zoom Scan
Grid Extents [mm]	40.0 x 80.0	28.0 x 28.0 x 28.0
Grid Steps [mm]	10.0 x 10.0	5.0 x 5.0 x 1.4
Sensor Surface [mm]	3.0	1.4
Graded Grid	N/A	Yes
M2/M1 [%]		78.6
Dist 3dB Peak [mm]		8.0

Measurement Results

	Area Scan	Zoom Scan
psSAR1g [W/Kg]	3.13	3.20
psSAR10g [W/Kg]	1.20	1.25
Power Drift [dB]	-0.17	-0.02



System Performance Check Report for D3900V2 - SN1102

Exposure Conditions

Frequency [MHz]   Channel Number	3900.000   0	TSL Permittivity	38.5
Group   UID	CW   0--	TSL Conductivity [S/m]	3.09
Conversion Factor	7.06	Phantom Section   TSL	Flat   Head Simulating Liquid

Hardware Setup

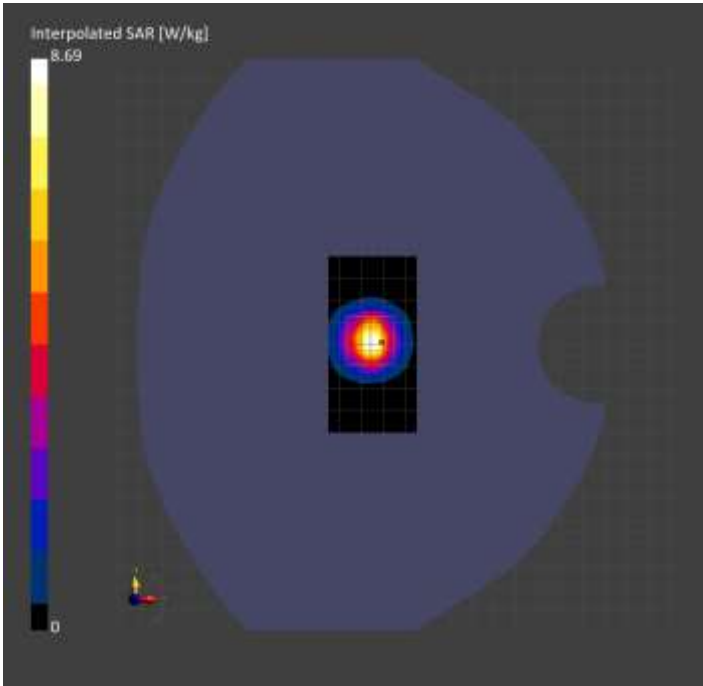
Probe   Calibration Date	EX3DV4 - SN3989 (Sensor X Disabled)   2024-01-09	Phantom	Twin-SAM V8.0 (30deg probe tilt)
DAE   Calibration Date	DAE4 Sn1674   2024-05-13	TSL Type	HBBL-600-10000
Software Version	16.4.0.5005		

Scans Setup

	Area Scan	Zoom Scan
Grid Extents [mm]	40.0 x 80.0	28.0 x 28.0 x 28.0
Grid Steps [mm]	10.0 x 10.0	5.0 x 5.0 x 1.4
Sensor Surface [mm]	3.0	1.4
Graded Grid	N/A	Yes
M2/M1 [%]		76.4
Dist 3dB Peak [mm]		8.0

Measurement Results

	Area Scan	Zoom Scan
psSAR1g [W/Kg]	3.24	3.38
psSAR10g [W/Kg]	1.14	1.23
Power Drift [dB]	-0.01	0.05



System Performance Check Report for D2300V2 - SN1002

Exposure Conditions

Frequency [MHz]   Channel Number	2300.000   0	TSL Permittivity	38.4
Group   UID	CW   0--	TSL Conductivity [S/m]	1.53
Conversion Factor	7.25	Phantom Section   TSL	Flat   Head Simulating Liquid

Hardware Setup

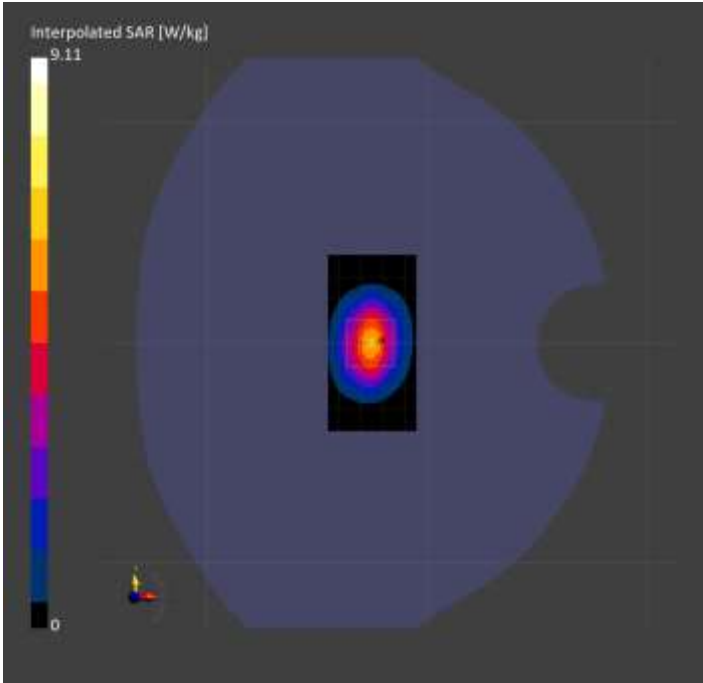
Probe   Calibration Date	EX3DV4 - SN3990   2024-02-28	Phantom	Twin-SAM V8.0 (30deg probe tilt)
DAE   Calibration Date	DAE4 Sn1433   2024-02-08	TSL Type	HBBL-600-10000
Software Version	16.4.0.5005		

Scans Setup

	Area Scan	Zoom Scan
Grid Extents [mm]	40.0 x 80.0	30.0 x 30.0 x 30.0
Grid Steps [mm]	10.0 x 10.0	5.0 x 5.0 x 1.5
Sensor Surface [mm]	3.0	1.4
Graded Grid	N/A	Yes
M2/M1 [%]		82.5
Dist 3dB Peak [mm]		9.3

Measurement Results

	Area Scan	Zoom Scan
psSAR1g [W/Kg]	4.75	4.80
psSAR10g [W/Kg]	2.27	2.38
Power Drift [dB]	N/A	0.03



System Performance Check Report for D2450V2 - SN748

Exposure Conditions

Frequency [MHz]   Channel Number	2450.000   0	TSL Permittivity	39.2
Group   UID	CW   0--	TSL Conductivity [S/m]	1.69
Conversion Factor	7.1	Phantom Section   TSL	Flat   Head Simulating Liquid

Hardware Setup

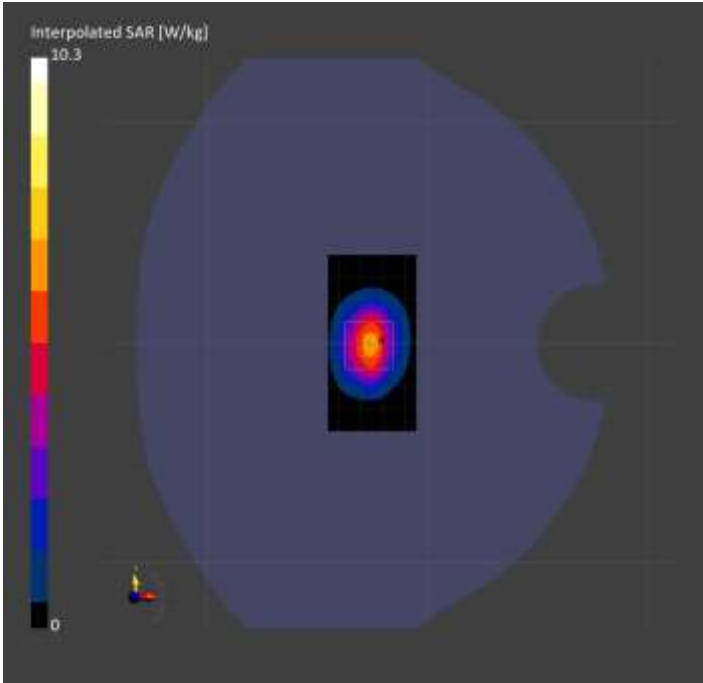
Probe   Calibration Date	EX3DV4 - SN3990   2024-02-28	Phantom	Twin-SAM V8.0 (30deg probe tilt)
DAE   Calibration Date	DAE4 Sn1433   2024-02-08	TSL Type	HBBL-600-10000
Software Version	16.4.0.5005		

Scans Setup

	Area Scan	Zoom Scan
Grid Extents [mm]	40.0 x 80.0	30.0 x 30.0 x 30.0
Grid Steps [mm]	10.0 x 10.0	5.0 x 5.0 x 1.5
Sensor Surface [mm]	3.0	1.4
Graded Grid	N/A	Yes
M2/M1 [%]		80.9
Dist 3dB Peak [mm]		9.0

Measurement Results

	Area Scan	Zoom Scan
psSAR1g [W/Kg]	5.14	5.12
psSAR10g [W/Kg]	2.38	2.42
Power Drift [dB]	N/A	-0.10



System Performance Check Report for D2600V2 - SN1036

Exposure Conditions

Frequency [MHz]   Channel Number	2600.000   0	TSL Permittivity	42.1
Group   UID	CW   0--	TSL Conductivity [S/m]	1.81
Conversion Factor	7.03	Phantom Section   TSL	Flat   Head Simulating Liquid

Hardware Setup

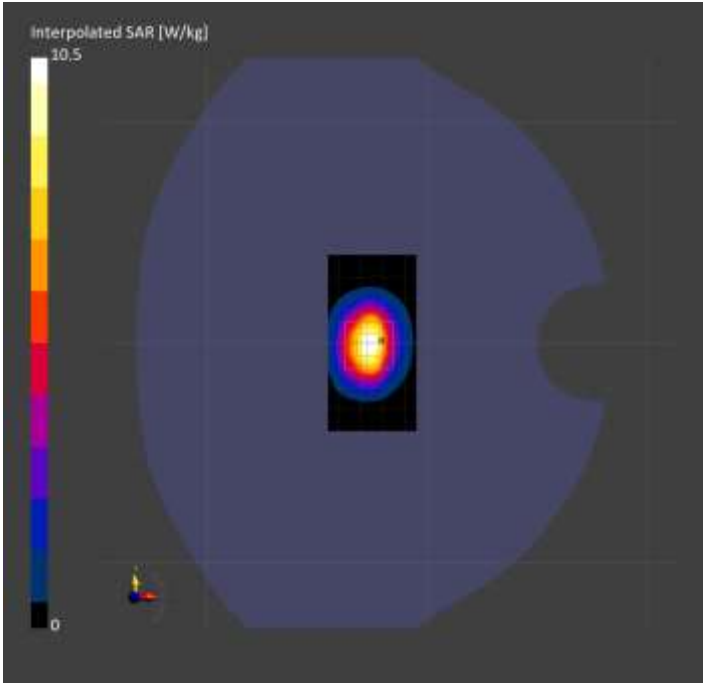
Probe   Calibration Date	EX3DV4 - SN3990   2024-02-28	Phantom	Twin-SAM V8.0 (30deg probe tilt)
DAE   Calibration Date	DAE4 Sn1433   2024-02-08	TSL Type	HBBL-600-10000
Software Version	16.4.0.5005		

Scans Setup

	Area Scan	Zoom Scan
Grid Extents [mm]	40.0 x 80.0	30.0 x 30.0 x 30.0
Grid Steps [mm]	10.0 x 10.0	5.0 x 5.0 x 1.5
Sensor Surface [mm]	3.0	1.4
Graded Grid	N/A	Yes
M2/M1 [%]		81.9
Dist 3dB Peak [mm]		9.0

Measurement Results

	Area Scan	Zoom Scan
psSAR1g [W/Kg]	5.11	5.27
psSAR10g [W/Kg]	2.28	2.44
Power Drift [dB]	N/A	-0.05



System Performance Check Report for D1640V2 - SN324

Exposure Conditions

Frequency [MHz]   Channel Number	1640.000   0	TSL Permittivity	41.2
Group   UID	CW   0--	TSL Conductivity [S/m]	1.23
Conversion Factor	8.26	Phantom Section   TSL	Flat   Head Simulating Liquid

Hardware Setup

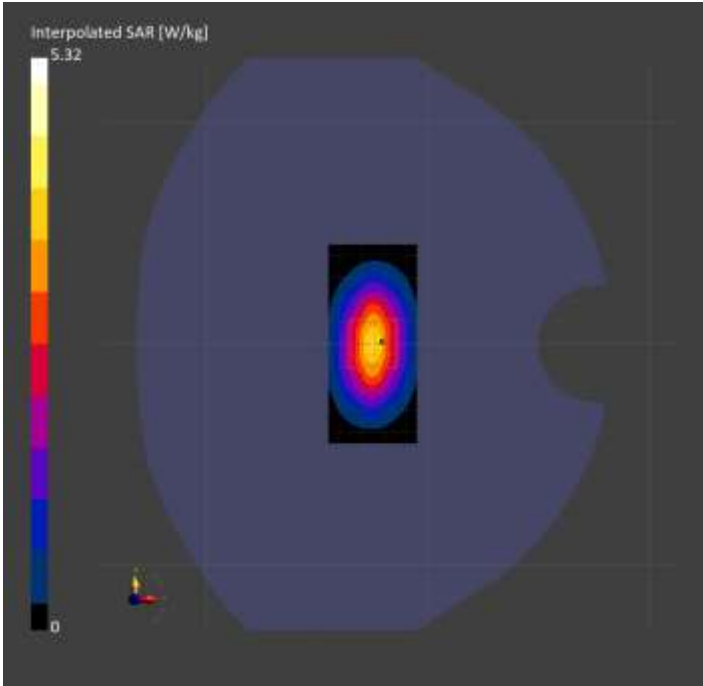
Probe   Calibration Date	EX3DV4 - SN7335   2024-01-09	Phantom	Twin-SAM V8.0 (30deg probe tilt)
DAE   Calibration Date	DAE4 Sn1799   2024-05-02	TSL Type	HBBL-600-10000
Software Version	16.4.0.5005		

Scans Setup

	Area Scan	Zoom Scan
Grid Extents [mm]	40.0 x 90.0	30.0 x 30.0 x 30.0
Grid Steps [mm]	10.0 x 15.0	6.0 x 6.0 x 1.5
Sensor Surface [mm]	3.0	1.4
Graded Grid	N/A	Yes
M2/M1 [%]		87.3
Dist 3dB Peak [mm]		10.8

Measurement Results

	Area Scan	Zoom Scan
psSAR1g [W/Kg]	3.23	3.23
psSAR10g [W/Kg]	1.76	1.78
Power Drift [dB]	0.01	-0.05



System Performance Check Report for D5GHzV2 - SN1168

Exposure Conditions

Frequency [MHz]   Channel Number	5250.000   0	TSL Permittivity	38.1
Group   UID	CW   0--	TSL Conductivity [S/m]	4.39
Conversion Factor	5.15	Phantom Section   TSL	Flat   Head Simulating Liquid

Hardware Setup

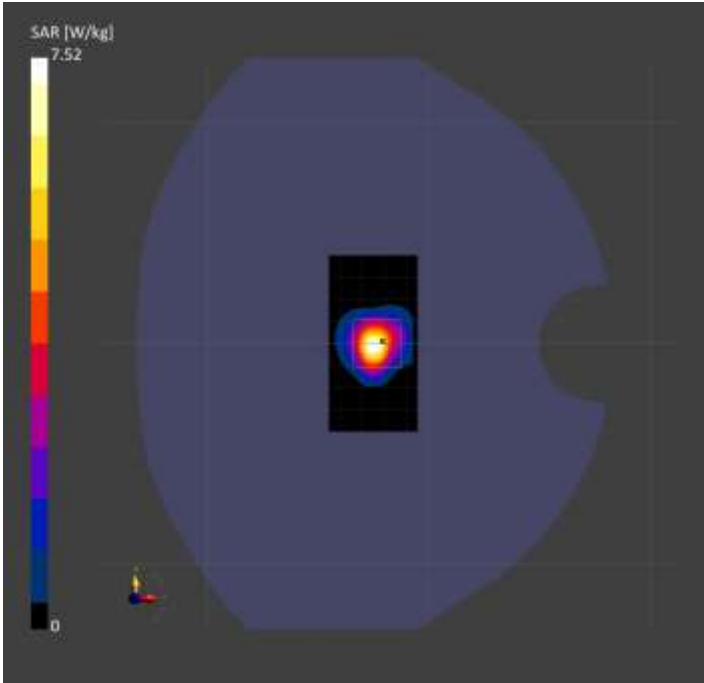
Probe   Calibration Date	EX3DV4 - SN3991   2024-11-04	Phantom	Twin-SAM V8.0 (30deg probe tilt)
DAE   Calibration Date	DAE4 Sn1544   2024-01-16	TSL Type	HBBL-600-10000
Software Version	16.4.0.5005		

Scans Setup

	Area Scan	Zoom Scan
Grid Extents [mm]	40.0 x 80.0	22.0 x 22.0 x 22.0
Grid Steps [mm]	10.0 x 10.0	4.0 x 4.0 x 1.4
Sensor Surface [mm]	3.0	1.4
Graded Grid	N/A	Yes
M2/M1 [%]		64.7
Dist 3dB Peak [mm]		6.9

Measurement Results

	Area Scan	Zoom Scan
psSAR1g [W/Kg]	6.64	7.46
psSAR10g [W/Kg]	1.91	2.17
Power Drift [dB]	N/A	0.03





System Performance Check Report for D2600V2 - SN1036

Exposure Conditions

Frequency [MHz]   Channel Number	2600.000   0	TSL Permittivity	38.4
Group   UID	CW   0--	TSL Conductivity [S/m]	1.92
Conversion Factor	6.46	Phantom Section   TSL	Flat   Head Simulating Liquid

Hardware Setup

Probe   Calibration Date	EX3DV4 - SN3686   2024-01-12	Phantom	Twin-SAM V8.0 (30deg probe tilt)
DAE   Calibration Date	DAE4 Sn1357   2024-01-09	TSL Type	HBBL-600-10000
Software Version	16.4.0.5005		

Scans Setup

	Area Scan	Zoom Scan
Grid Extents [mm]	40.0 x 80.0	30.0 x 30.0 x 30.0
Grid Steps [mm]	10.0 x 10.0	5.0 x 5.0 x 1.5
Sensor Surface [mm]	3.0	1.4
Graded Grid	N/A	Yes
M2/M1 [%]		81.5
Dist 3dB Peak [mm]		9.0

Measurement Results

	Area Scan	Zoom Scan
psSAR1g [W/Kg]	5.62	5.65
psSAR10g [W/Kg]	2.52	2.58
Power Drift [dB]	N/A	0.00

