



313 West 12800 South, Suite 311
Draper, UT 84020
(801) 260-4040

Test Report

Certification

FCC ID	R33C4Z2IO
Equipment Under Test	C4-Z2IO and C4-Z2C
Test Report Serial No	V038148_02
Date of Test	December 8 and 9, 2016
Report Issue Date	December 12, 2016

Test Specifications:	Applicant:
FCC Part 15, Subpart C	Control4 11734 S. Election Road Draper, UT 84020 U.S.A



Certification of Engineering Report

This report has been prepared by VPI Laboratories, Inc. to document compliance of the device described below with the requirements of Federal Communications Commission (FCC) Part 15, Subpart C. This report may be reproduced in full. Partial reproduction of this report may only be made with the written consent of the laboratory. The results in this report apply only to the sample tested.

Applicant	Control4
Manufacturer	Control4
Brand Name	Control4
Model Number	C4-Z2IO and C4-Z2C
FCC ID	R33C4Z2IO

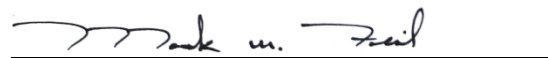
On this 12th day of December 2016, I, individually and for VPI Laboratories, Inc., certify that the statements made in this engineering report are true, complete, and correct to the best of my knowledge, and are made in good faith.

Although NVLAP has accredited the VPI Laboratories, Inc. EMC testing facilities, this report must not be used to claim product certification, approval, or endorsement by NVLAP, NIST, or any agency of the federal government.

VPI Laboratories, Inc.



Tested by: Norman P. Hansen



Reviewed by: Mark M. Feil

Revision History		
Revision	Description	Date
01	Original Report Release	December 12, 2016
02	Correct the FCC ID	December 19, 2016

Table of Contents

1	Client Information.....	5
1.1	Applicant.....	5
1.2	Manufacturer.....	5
2	Equipment Under Test (EUT).....	6
2.1	Identification of EUT	6
2.2	Description of EUT	6
2.3	EUT and Support Equipment	6
2.4	Interface Ports on EUT	7
2.5	Modification Incorporated/Special Accessories on EUT	7
2.6	Deviation from Test Standard	7
3	Test Specification, Methods and Procedures	8
3.1	Test Specification.....	8
3.2	Methods & Procedures.....	8
3.3	Test Procedure	12
4	Operation of EUT During Testing	13
4.1	Operating Environment.....	13
4.2	Operating Modes.....	13
4.3	EUT Exercise Software.....	13
5	Summary of Test Results	14
5.1	FCC Part 15, Subpart C	14
5.2	Result	14
6	Measurements, Examinations and Derived Results	15
6.1	General Comments.....	15
6.2	Test Results.....	15
7	Test Procedures and Test Equipment.....	30
7.1	Conducted Emissions at Mains Ports.....	30
7.2	Direct Connection at the Antenna Port Tests.....	31
7.3	Radiated Emissions	32
7.4	Measurement Uncertainty	34
8	Photographs	35

1 Client Information

1.1 Applicant

Company Name	Control4 11734 S. Election Road Draper, UT 84020 U.S.A
Contact Name	Roger Midgley
Title	Sr. Regulatory Compliance Engineer

1.2 Manufacturer

Company Name	Control4 11734 S. Election Road Draper, UT 84020 U.S.A
Contact Name	Roger Midgley
Title	Sr. Regulatory Compliance Engineer

2 Equipment Under Test (EUT)

2.1 Identification of EUT

Brand Name	Control4
Model Number	C4-Z2IO and C4-Z2C
Hardware Version	Rev. 3.1
Serial Number	None
Dimensions (cm)	8.0 x 6.5 x 2.75

2.2 Description of EUT

The C4-Z2IO is a wireless ZigBee extender with 2 IR emitter ports, a configurable contact/relay port, magnetic contact, and Power port using a Micro USB connector. The configurable contact/relay port can be configured for 2 relays or 1 relay and 2 contacts or 4 contacts. The IR ports are used to connect an IR device into a Control4 home automation system. The C4-Z2IO is powered using a USB connector by a Phihong PSA105R-050QL6 power supply.

The C4-Z2C uses the same PCB as the C4-Z2IO. The C4-Z2C is a wireless ZigBee transceiver with 4 contact ports and a magnetic contact port. The C4-Z2C is powered by 2 AA batteries.

The ZigBee transceiver uses a trace antenna with a calculated gain of 0.5 dBi. The ZigBee transceiver operates on 15 channels in the 2400 – 2483.5 MHz band. Channel assignments are shown in the table below.

Channel	Frequency (MHz)	Channel	Frequency (MHz)	Channel	Frequency (MHz)	Channel	Frequency (MHz)
11	2405	15	2425	19	2445	23	2465
12	2410	16	2430	20	2450	24	2470
13	2415	17	2435	21	2455	25	2475
14	2420	18	2440	22	2460		

This report covers the circuitry of the devices subject to FCC Part 15, Subpart C. The circuitry of the device subject to FCC Subpart B was found to be compliant and is covered in VPI Laboratories, Inc. report V38147.

2.3 EUT and Support Equipment

The EUT and support equipment used during the test are listed below.

Brand Name Model Number Serial Number	Description	Name of Interface Ports / Interface Cables
BN: Control4 MN: C4-Z2IO (Note 1) SN: None	ZigBee Extender and Interface Device	See Section 2.4

Brand Name Model Number Serial Number	Description	Name of Interface Ports / Interface Cables
BN: Control4 MN: C4-Z2C (Note 1) SN: None	ZigBee Interface Device	See Section 2.4

Notes: (1) EUT

2.4 Interface Ports on EUT

2.4.1 Interface Ports on the C4-Z2IO

Name of Ports	No. of Ports Fitted to EUT	Cable Description/Length
IR	2	Cables from 2 IR emitters with jack connectors/2 meters
Contact/Relay	1	Unshielded 8 conductor cable/1.5 meters

2.4.2 Interface Ports on the C4-Z2C

Name of Ports	No. of Ports Fitted to EUT	Cable Description/Length
Contact	1	Unshielded 8 conductor cable/1.5 meters

2.5 Modification Incorporated/Special Accessories on EUT

There were no modifications or special accessories required to comply with the specification.

2.6 Deviation from Test Standard

There were no deviations from the test specification.

3 Test Specification, Methods and Procedures

3.1 Test Specification

Title	FCC PART 15, Subpart C (47 CFR 15) 15.203, 15.207, and 15.247 Limits and methods of measurement of radio interference characteristics of radio frequency devices.
Purpose of Test	The tests were performed to demonstrate initial compliance

3.2 Methods & Procedures

3.2.1 §15.203 Antenna Requirement

An intentional radiator shall be designed to ensure that no antenna other than that furnished by the responsible party shall be used with the device. The use of a permanently attached antenna or of an antenna that uses a unique coupling to the intentional radiator shall be considered sufficient to comply with the provisions of this Section. The manufacturer may design the unit so that a broken antenna can be replaced by the user, but the use of a standard antenna jack or electrical connector is prohibited. This requirement does not apply to carrier current devices or to devices operated under the provisions of Sections 15.211, 15.213, 15.217, 15.219, or 15.221. Further, this requirement does not apply to intentional radiators that must be professionally installed, such as perimeter protection systems and some field disturbance sensors, or to other intentional radiators which, in accordance with Section 15.31(d), must be measured at the installation site. However, the installer shall be responsible for ensuring that the proper antenna is employed so that the limits in this Part are not exceeded.

3.2.2 §15.207 Conducted Limits

(a) Except as shown in paragraphs (b) and (c) of this section, for an intentional radiator that is designed to be connected to the public utility (AC) power line, the radio frequency voltage that is conducted back onto the AC power line on any frequency or frequencies, within the band 150 kHz to 30 MHz, shall not exceed the limits in the following table, as measured using a 50 μ H/50 ohms line impedance stabilization network (LISN). Compliance with the provisions of this paragraph shall be based on the measurement of the radio frequency voltage between each power line and ground at the power terminal. The lower limit applies at the boundary between the frequency ranges.

Frequency range (MHz)	Limit (dB μ V)	
	Quasi-peak	Average
0.15 to 0.50*	66 to 56*	56 to 46*
0.50 to 5	56	46
5 to 30	60	50

*Decreases with the logarithm of the frequency.

Table 1: Limits for conducted emissions at mains ports of Class B ITE.

3.2.3 §15.247 Operation within the bands 902 – 928 MHz, 2400 – 2483.5 MHz, and 5725 – 5850 MHz

- Operation under the provisions of this Section is limited to frequency hopping and digitally modulated intentional radiators that comply with the following provisions.

- 1) Frequency hopping systems shall have hopping channel carrier frequencies separated by a minimum of 25 kHz or the 20 dB bandwidth of the hopping channel, whichever is greater. Alternatively, frequency hopping systems operating in the 2400 – 2483.5 MHz band may have hopping channel carrier frequencies that are separated by 25 kHz or two-thirds of the 20 dB bandwidth of the hopping channel, whichever is greater, provided the systems operate with an output power no greater than 125 mW. The system shall hop to channel frequencies that are selected at the system hopping rate from a pseudorandomly ordered list of hopping frequencies. Each frequency must be used equally on the average by each transmitter. The system receivers shall have input bandwidths that match the hopping channel bandwidths of their corresponding transmitters and shall shift frequencies in synchronization with the transmitted signals.
 - i. For frequency hopping systems operating in the 902-928 MHz band: if the 20 dB bandwidth of the hopping channel is less than 250 kHz, the system shall use at least 50 hopping frequencies and the average time of occupancy on any frequency shall not be greater than 0.4 seconds within a 20 second period; if the 20 dB bandwidth of the hopping channel is 250 kHz or greater, the system shall use at least 25 hopping frequencies and the average time of occupancy on any frequency shall not be greater than 0.4 seconds within a 10 second period. The maximum allowed 20 dB bandwidth of the hopping channel is 500 kHz.
 - ii. Frequency hopping systems operating in the 5725-5850 MHz band shall use at least 75 hopping frequencies. The maximum 20 dB bandwidth of the hopping channel is 1 MHz. The average time of occupancy on any frequency shall not be greater than 0.4 seconds within a 30 second period.
 - iii. Frequency hopping systems in the 2400-2483.5 MHz band shall use at least 15 non-overlapping channels. The average time of occupancy on any channel shall not be greater than 0.4 seconds within a period of 0.4 seconds multiplied by the number of hopping channels employed. Frequency hopping systems may avoid or suppress transmissions on a particular hopping frequency provided that a minimum of 15 non-overlapping channels are used.
 - 2) Systems using digital modulation techniques may operate in the 902 - 928 MHz, 2400 - 2483.5 MHz, and 5725 - 5850 MHz bands. The minimum 6 dB bandwidth shall be at least 500 kHz.
- b) The maximum peak output power of the intentional radiator shall not exceed the following:
- 1) For frequency hopping systems operating in the 2400-2483.5 MHz band employing at least 75 non-overlapping hopping channels, and all frequency hopping systems in the 5725-5850 MHz band: 1 watt. For all other frequency hopping systems in the 2400-2483.5 MHz band: 0.125 watts.
 - 2) For frequency hopping systems operating in the 902-928 MHz band: 1 watt for systems employing at least 50 hopping channels; and, 0.25 watts for systems employing less than 50 hopping channels, but at least 25 hopping channels, as permitted under paragraph (a)(1)(i) of this section.

- 3) For systems using digital modulation in the 902-928 MHz, 2400-2483.5 MHz, and 5725 – 5850 MHz bands: 1 watt. As an alternative to a peak power measurement, compliance with the Conducted Output Power is defined as the total transmit power delivered to all antennas and antenna elements averaged across all symbols in the signaling alphabet when the transmitter is operating at its maximum power control level. Power must be summed across all antennas and antenna elements. The average must not include any time intervals during which the transmitter is off or is transmitting at a reduced power level. If multiple modes of operation are possible (e.g., alternative modulation methods), the maximum conducted output power is the highest total transmit power occurring in any mode.
 - 4) The conducted output power limit specified in paragraph (b) of this section is based on the use of antennas with directional gains that do not exceed 6 dBi. Except as shown in paragraph (c) of this section, if transmitting antennas of directional gain greater than 6 dBi are used, the conducted power from the intentional radiator shall be reduced below the stated values in paragraphs (b)(1), (b)(2), and (b)(3) of this section, as appropriate, by the amount in dB that the directional gain of the antenna exceeds 6 dBi.
- c) Operation with directional antenna gains greater than 6 dBi.
- 1) Fixed point-to-point operation:
 - i. Systems operating in the 2400-2483.5 MHz band that are used exclusively for fixed, point-to-point operations may employ transmitting antennas with directional gain greater than 6 dBi provided the maximum peak output power of the intentional radiator is reduced by 1 dB for every 3 dB that the directional gain of the antenna exceeds 6 dBi.
 - ii. Systems operating in the 5725-5850 MHz band that are used exclusively for fixed, point-to-point operations may employ transmitting antennas with directional gain greater than 6 dBi without any corresponding reduction in transmitter peak output power.
 - iii. Fixed, point-to-point operation, as used in paragraphs (b)(4)(i) and (b)(4)(ii) of this section, excludes the use of point-to-multipoint systems, omnidirectional applications, and multiple co-located intentional radiators transmitting the same information. The operator of the spread spectrum or digitally modulated intentional radiator or, if the equipment is professionally installed, the installer is responsible for ensuring that the system is used exclusively for fixed, point-to-point operations. The instruction manual furnished with the intentional radiator shall contain language in the installation instructions informing the operator and the installer of this responsibility.
 - 2) In addition to the provisions in paragraphs (b)(1), (b)(3), (b)(4) and (c)(1)(i) of this section, transmitters operating in the 2400-2483.5 MHz band that emit multiple directional beams, simultaneously or sequentially, for the purpose of directing signals to individual receivers or to groups of receivers provided the emissions comply with the following:
 - i. Different information must be transmitted to each receiver.

- ii. If the transmitter employs an antenna system that emits multiple directional beams but does not emit multiple directional beams simultaneously, the total output power conducted to the array or arrays that comprise the device, i.e., the sum of the power supplied to all antennas, antenna elements, staves, etc. and summed across all carriers or frequency channels, shall not exceed the limit specified in paragraph (b)(1) or (b)(3) of this section, as applicable. However, the total conducted output power shall be reduced by 1 dB below the specified limits for each 3 dB that the directional gain of the antenna /antenna array exceeds 6 dBi. The directional antenna gain shall be computed as follows:
 - A. The directional gain shall be calculated as the sum of 10 log (number of array elements or staves) plus the directional gain of the element or staff having the highest gain.
 - B. A lower value for the directional gain than that calculated in paragraph (c)(2)(ii)(A) of this section will be accepted if sufficient evidence is presented, e.g., due to shading of the array or coherence loss in the beamforming.
 - iii. If a transmitter employs an antenna that operates simultaneously on multiple directional beams using the same or different frequency channels, the power supplied to each emission beam is subject to the power limit specified in paragraph (c)(2)(ii) of this section. If transmitted beams overlap, the power shall be reduced to ensure that their aggregate power does not exceed the limit specified in paragraph (c)(2)(ii) of this section. In addition, the aggregate power transmitted simultaneously on all beams shall not exceed the limit specified in paragraph (c)(2)(ii) of this section by more than 8 dB.
 - iv. Transmitters that emit a single directional beam shall operate under the provisions of paragraph (c)(1) of this section.
- d) In any 100 kHz bandwidth outside the frequency band in which the spread spectrum or digitally modulated intentional radiator is operating, the radio frequency power that is produced by the intentional radiator shall be at least 20 dB below that in the 100 kHz bandwidth within the band that contains the highest level of the desired power, based on either an RF conducted or a radiated measurement, provided the transmitter demonstrates compliance with the peak conducted power limits. If the transmitter complies with the conducted power limits based on the use of RMS averaging over a time interval, as permitted under paragraph (b)(3) of this section, the attenuation required under this paragraph shall be 30 dB instead of 20 dB. Attenuation below the general limits specified in Section 15.209(a) is not required. In addition, radiated emissions which fall in the restricted bands, as defined in Section 15.205(a), must also comply with the radiated emission limits specified in Section 15.209(a) (see Section 15.205(c)).
 - e) For digitally modulated systems, the power spectral density conducted from the intentional radiator to the antenna shall not be greater than 8 dBm in any 3 kHz band during any time interval of continuous transmission. This power spectral density shall be determined in accordance with the provisions of paragraph (b) of this section. The same method of determining the conducted output power shall be used to determine the power spectral density.
 - f) For the purposes of this section, hybrid systems are those that employ a combination of both frequency hopping and digital modulation techniques. The frequency hopping operation of the

hybrid system, with the direct sequence or digital modulation operation turned off, shall have an average time of occupancy on any frequency not to exceed 0.4 seconds within a time period in seconds equal to the number of hopping frequencies employed multiplied by 0.4. The digital modulation operation of the hybrid system, with the frequency hopping turned off, shall comply with the power density requirements of paragraph (d) of this section.

- g) Frequency hopping spread spectrum systems are not required to employ all available hopping channels during each transmission. However, the system, consisting of both the transmitter and the receiver, must be designed to comply with all of the regulations in this section should the transmitter be presented with a continuous data (or information) stream. In addition, a system employing short transmission bursts must comply with the definition of a frequency hopping system and must distribute its transmissions over the minimum number of hopping channels specified in this section.
- h) The incorporation of intelligence within a frequency hopping spread spectrum system that permits the system to recognize other users within the spectrum band so that it individually and independently chooses and adapts its hopsets to avoid hopping on occupied channels is permitted. The coordination of frequency hopping systems in any other manner for the express purpose of avoiding the simultaneous occupancy of individual hopping frequencies by multiple transmitters is not permitted.
- i) Systems operating under the provisions of this section shall be operated in a manner that ensures that the public is not exposed to radio frequency energy levels in excess of the Commission's guidelines. See § 1.1307(b)(1) of this Chapter.

Note: Spread spectrum systems are sharing these bands on a noninterference basis with systems supporting critical Government requirements that have been allocated the usage of these bands, secondary only to ISM equipment operated under the provisions of Part 18 of this Chapter. Many of these Government systems are airborne radiolocation systems that emit a high EIRP which can cause interference to other users. Also, investigations of the effect of spread spectrum interference to U. S. Government operations in the 902-928 MHz band may require a future decrease in the power limits allowed for spread spectrum operation.

3.3 Test Procedure

The testing was performed according to the procedures in ANSI C63.10-2013 and 47 CFR Part 15. Testing was performed at the VPI Laboratories, Inc. Wanship open area test site #2, located at 29145 Old Lincoln Highway, Wanship, UT. VPI Laboratories, Inc. is accredited by National Voluntary Laboratory Accreditation Program (NVLAP); NVLAP Lab Code: 100272-0, which is effective until September 30, 2017.

4 Operation of EUT During Testing

4.1 Operating Environment

Power Supply	120 VAC/60 Hz to C4-Z2IO power supply or 3 VDC from 2 AA batteries for the C4-Z2C
---------------------	---

4.2 Operating Modes

The transmitter was tested on 3 orthogonal axes while in a constant transmit mode at the upper, middle, and lower channels. The AC mains voltage to the AC adapter of the C4-Z2IO was varied as required by §15.31(e) with no change seen in the voltage supplied to the transmitter or in transmitter characteristics. New batteries were installed in the C4-Z2C for testing.

4.3 EUT Exercise Software

Programmed IC, Firmware, EFR32 Rev. 1.0.124 was used to exercise the EUT for testing.

5 Summary of Test Results

5.1 FCC Part 15, Subpart C

5.1.1 Summary of Tests

Section	Environmental Phenomena	Frequency Range (MHz)	Result
15.203	Antenna Requirements	Structural requirement	Complied
15.207	Conducted Disturbance at Mains Ports	0.15 to 30	Complied
15.247(a)	Bandwidth Requirement	2400 to 2483.5	Complied
15.247(b)	Peak Output Power	2400 to 2483.5	Complied
15.247(d)	Antenna Conducted Spurious Emissions	0.009 - 25000	Complied
15.247(d)	Radiated Spurious Emissions	0.009 - 25000	Complied
15.247(e)	Peak Power Spectral Density	2400 to 2483.5	Complied

5.2 Result

In the configuration tested, the EUT complied with the requirements of the specification.

6 Measurements, Examinations and Derived Results

6.1 General Comments

This section contains the test results only. Details of the test methods used and a list of the test equipment used during the measurements can be found in Section 7 of this report.

6.2 Test Results

6.2.1 §15.203 Antenna Requirements

The EUT uses a trace on the PCB as an antenna. The calculated gain for the antenna, from measurements taken at the time of test, shows a maximum gain of 0.5 dBi.

Result

The EUT complied with the specification.

6.2.2 Conducted Emissions at Mains Ports Data (Hot Lead)

Frequency (MHz)	AC Mains Lead	Detector	Measured Level (dB μ V)	Limit (dB μ V)	Margin (dB)
0.49	Hot Lead	Peak (Note 1)	35.6	46.3	-10.7
0.95	Hot Lead	Peak (Note 1)	27.1	46.0	-18.9
1.15	Hot Lead	Peak (Note 1)	27.5	46.0	-18.5
1.75	Hot Lead	Peak (Note 1)	26.3	46.0	-19.7
4.56	Hot Lead	Peak (Note 1)	26.3	46.0	-19.7
24.65	Hot Lead	Peak (Note 1)	29.3	50.0	-20.7
0.16	Neutral Lead	Peak (Note 1)	46.4	55.5	-9.1
0.20	Neutral Lead	Peak (Note 1)	42.6	53.6	-11.0
0.24	Neutral Lead	Peak (Note 1)	36.9	52.2	-15.3
0.29	Neutral Lead	Peak (Note 1)	32.8	50.6	-17.8
0.49	Neutral Lead	Peak (Note 1)	33.7	46.3	-12.6
4.56	Neutral Lead	Peak (Note 1)	27.2	46.0	-18.8
24.70	Neutral Lead	Peak (Note 1)	30.1	50.0	-19.9

Note 1: The reference detector used for the measurements was Quasi-Peak or Peak and the data was compared to the average limit; therefore, the EUT was deemed to meet both the average and quasi-peak limits.
Note 2: The reference detector used for the measurements was quasi-peak and average and the data was compared to the respective limits.

Result

The EUT complied with the specification limit by a margin of 9.1 dB.

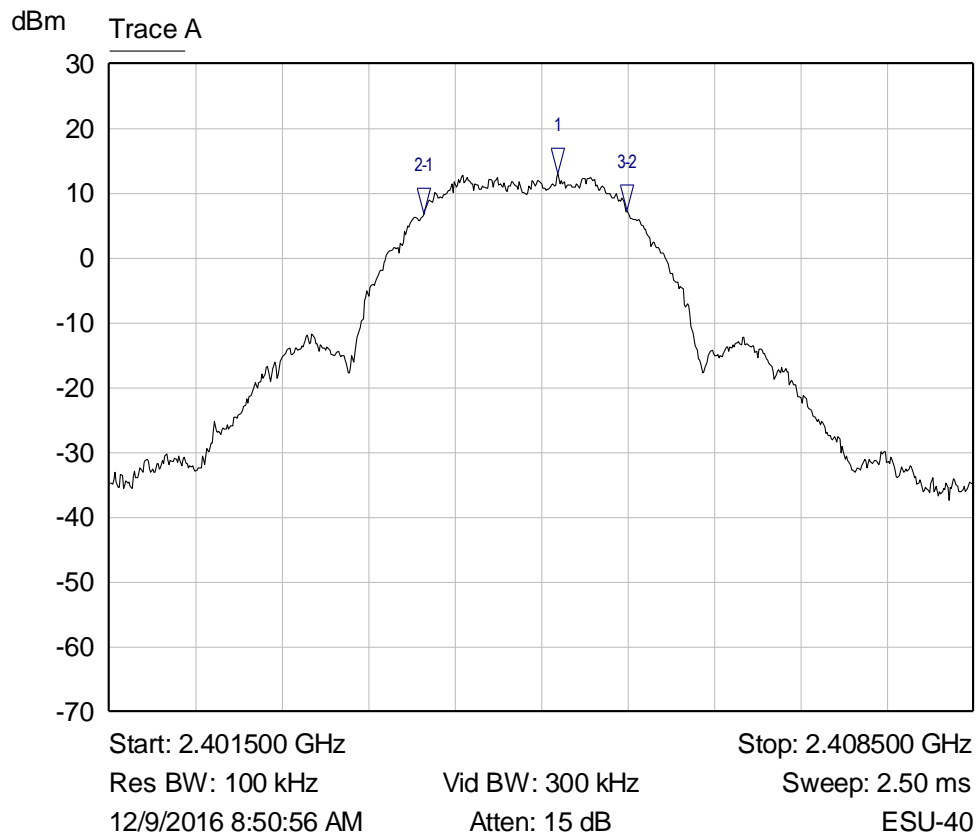
6.2.3 §15.247(a)(2) Emissions Bandwidth

Frequency (MHz)	Emissions 6 dB bandwidth (kHz)
2405	1649

Frequency (MHz)	Emissions 6 dB bandwidth (kHz)
2440	1638
2475	1629

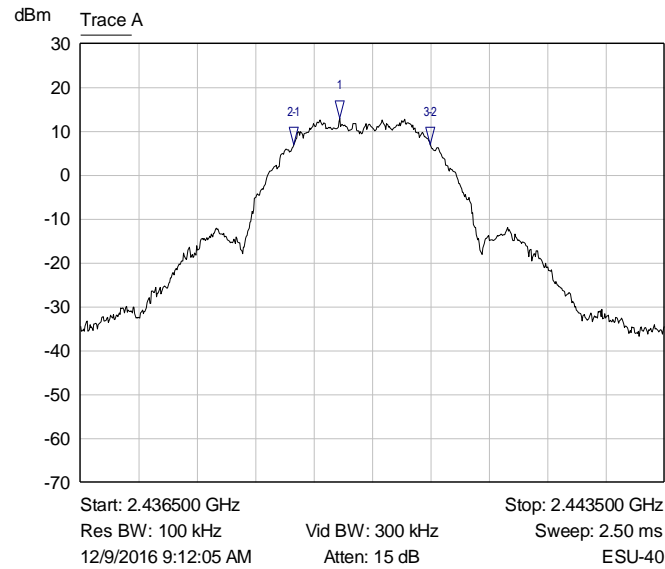
Result

In the configuration tested, the 6 dB bandwidth was greater than 500 kHz; therefore, the EUT complied with the requirements of the specification (see spectrum analyzer plots below).



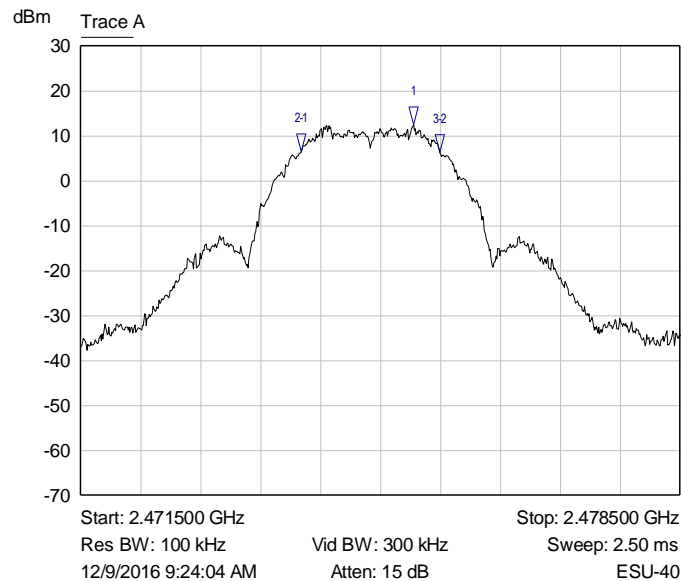
Mkr	Trace	X-Axis	Value	Notes
1 ▽	Trace A	2.405135 GHz	13.068501 dBm	
2-1 ▽	Trace A	-1.088141 MHz	-6.154811 dB	
3-2 ▽	Trace A	1.649038 MHz	0.340715 dB	

Graph 1: Lowest Channel Bandwidth



Mkr	Trace	X-Axis	Value	Notes
1 ▽	Trace A	2.439607 GHz	13.034606 dBm	
21 ▽	Trace A	-549.679484 kHz	-6.108972 dB	
32 ▽	Trace A	1.637821 MHz	0.094524 dB	

Graph 2: Middle Channel Bandwidth



Mkr	Trace	X-Axis	Value	Notes
1 ▽	Trace A	2.475381 GHz	12.503945 dBm	
21 ▽	Trace A	-1.312500 MHz	-5.931319 dB	
32 ▽	Trace A	1.626603 MHz	-0.256843 dB	

Graph 3: Highest Channel Bandwidth

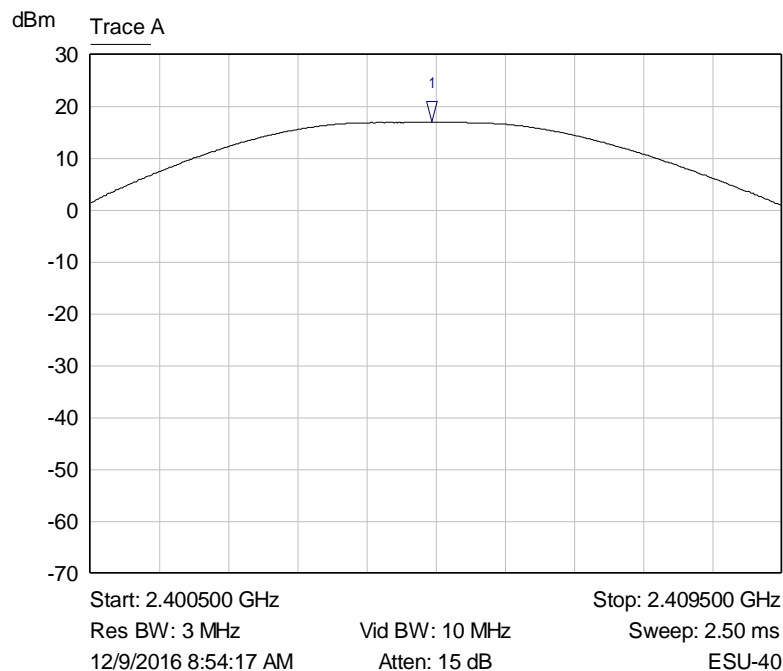
6.2.4 §15.247(b)(3) Peak Output Power

The maximum peak RF Conducted output power measured for this device was 16.96 dBm or 49.7 mW. The limit is 30 dBm or 1 Watt when using antennas with 6 dBi or less gain. The antenna has a gain of 0.5 dBi.

Frequency (MHz)	Measured Output Power (dBm)	Output Power (mW)
2405	16.96	49.7
2440	16.84	48.3
2475	16.48	44.5

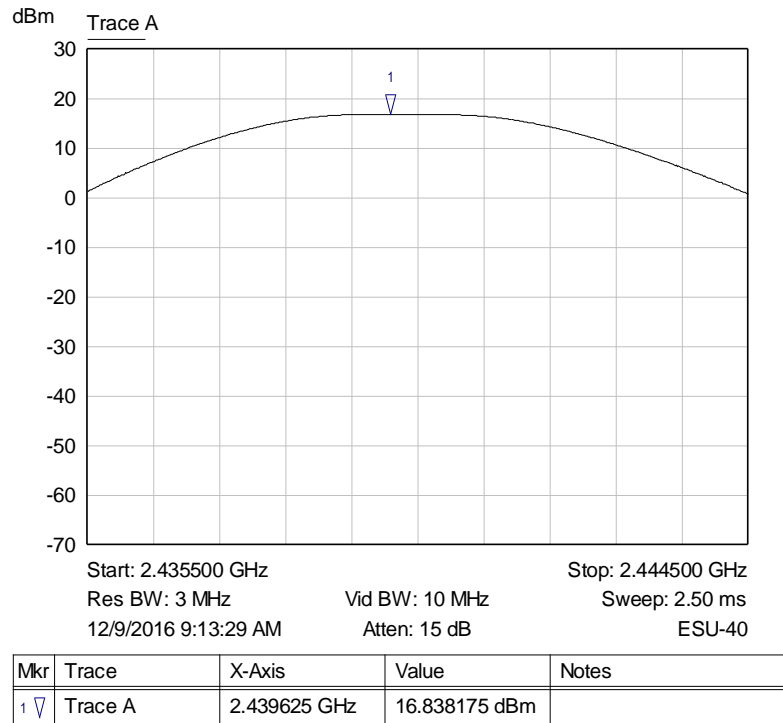
Result

In the configuration tested, the RF peak output power was less than 1 Watt; therefore, the EUT complied with the requirements of the specification (see spectrum analyzer plots below).

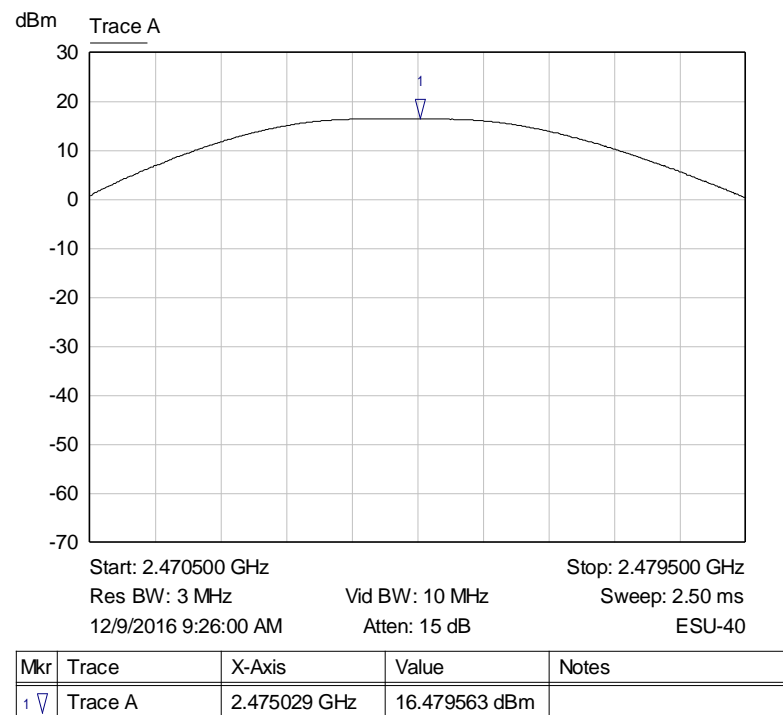


Mkr	Trace	X-Axis	Value	Notes
1 ▽	Trace A	2.404942 GHz	16.960255 dBm	

Graph 4: Lowest Channel Output Power Plot



Graph 5: Middle Channel Output Power



Graph 6: Highest Channel Output Power Plot

6.2.5 §15.247(d) Spurious Emissions

Conducted Spurious Emissions

The frequency range from the lowest frequency generated or used in the device to the tenth harmonic of the highest fundamental frequency was investigated to measure any antenna-conducted emissions. The tables show the measurement data from spurious emissions noted across the frequency range when transmitting at the lowest frequency, middle frequency, and upper frequency. Shown below are plots with the EUT tuned to the upper and lower channels. These demonstrate compliance with the provisions of this section at the band edges.

The emissions must be attenuated 20 dB below the highest power level measured within the authorized band as measured with a 100 kHz RBW. The highest power measured in was 13.1 dBm; therefore, the criteria is $13.1 - 20 = -7.9$ dBm.

Result

Conducted spurious emissions were attenuated 20 dB or more below the fundamental; therefore, the EUT complies with the specification.

Frequency (MHz)	Corrected Level (dBm)	Criteria (dBm)	Margin (dB)
4810	-45.6	-7.9	-37.7
7215	-51.2	-7.9	-43.3
9620	-50.0	-7.9	-42.1
12025	-51.1	-7.9	-43.2
14430	-50.0	-7.9	-42.1
16835	-50.5	-7.9	-42.6
19240	-51.3	-7.9	-43.4
21645	-50.9	-7.9	-43.0
24050	-50.5	-7.9	-42.6

Table 2: Transmitting on the Lowest Channel

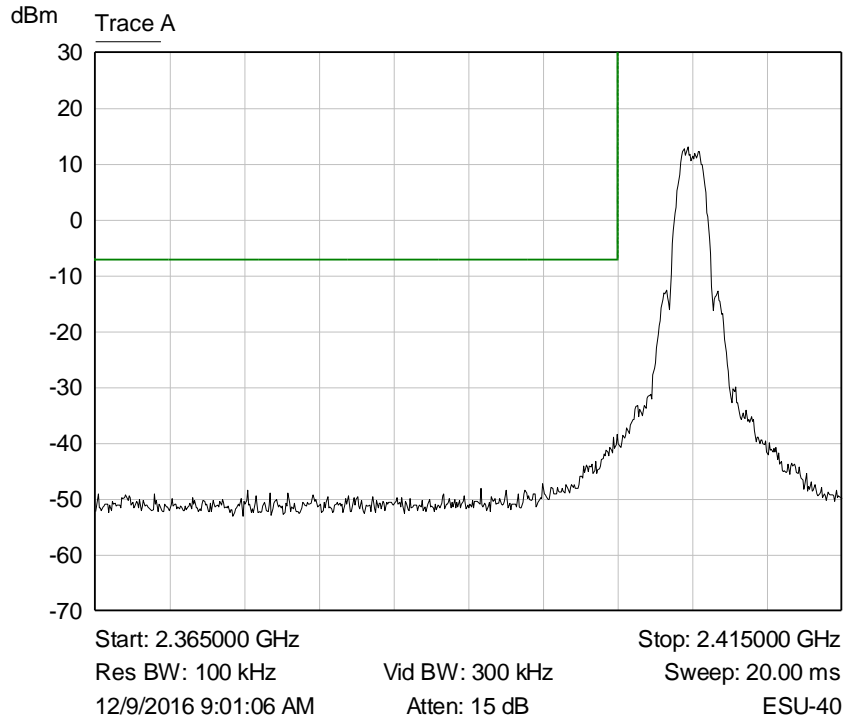
Frequency (MHz)	Corrected Level (dBm)	Criteria (dBm)	Margin (dB)
4880	-41.3	-7.9	-33.4
7320	-50.2	-7.9	-42.3
9760	-50.5	-7.9	-42.6
12200	-51.2	-7.9	-43.3
14640	-50.4	-7.9	-42.5
17080	-51.5	-7.9	-43.6
19520	-51.2	-7.9	-43.3

Frequency (MHz)	Corrected Level (dBm)	Criteria (dBm)	Margin (dB)
21960	-50.2	-7.9	-42.3
24400	-50.3	-7.9	-42.4

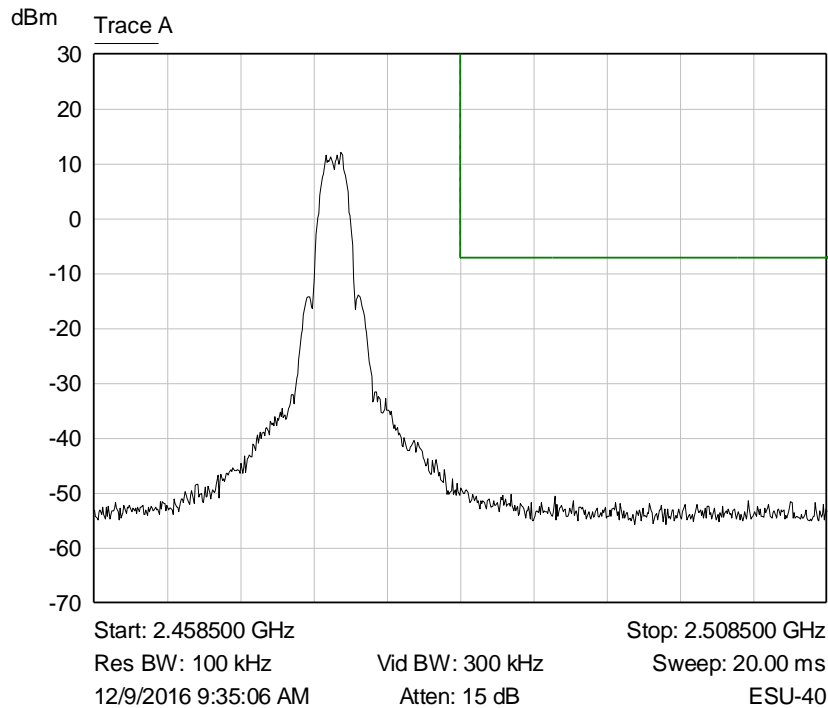
Table 3: Transmitting on the Middle Channel

Frequency (MHz)	Corrected Level (dBm)	Criteria (dBm)	Margin (dB)
7950	-42.6	-7.9	-34.7
7425	-51.3	-7.9	-43.4
9900	-50.4	-7.9	-42.5
12375	-51.3	-7.9	-43.4
14850	-50.4	-7.9	-42.5
17325	-50.9	-7.9	-43.0
19800	-49.8	-7.9	-41.9
22275	-50.5	-7.9	-42.6
24750	-50.0	-7.9	-42.1

Table 4: Transmitting on the Highest Channel



Graph 7: Lower Band Edge Plot



Graph 8: Upper Band Edge Plot

Radiated Spurious Emissions in the Restricted Bands of §15.205

The frequency range from the lowest frequency generated or used in the device to the tenth harmonic of the highest fundamental emission was investigated to measure any radiated emissions in the restricted bands. The following tables show measurements of any emission that fell into the restricted bands of §15.205. The tables show the worst-case emission measured from the EUT. For frequencies above 18.0 GHz, a measurement distance of 1 meter was used. The noise floor was a minimum of 6 dB below the limit. The emissions in the restricted bands must meet the limits specified in §15.209. Tabular data for each of the spurious emissions is shown below for each of the units. Plots of the band edges are also shown.

Result

All emissions in the restricted bands of §15.205 met the limits specified in §15.209; therefore, the EUT complies with the specification.

Frequency (MHz)	Detector	Antenna Polarity	Receiver Reading (dBμV)	Correction Factor (dB)	Field Strength (dBμV/m)	Limit (dBμV/m)	Margin (dB)
4810.0	Peak	Vertical	16.4	39.0	55.4	74.0	-18.6
4810.0	Average	Vertical	9.1	39.0	48.1	54.0	-5.9
4810.0	Peak	Horizontal	16.9	39.0	55.9	74.0	-18.1
4810.0	Average	Horizontal	9.9	39.0	48.9	54.0	-5.1
7215.0	Peak	Vertical	7.7	43.5	51.2	74.0	-22.8
7215.0	Average	Vertical	-2.1	43.5	41.4	54.0	-12.6
7215.0	Peak	Horizontal	7.8	43.5	51.3	74.0	-22.7
7215.0	Average	Horizontal	-3.4	43.5	40.1	54.0	-13.9

Table 5: C4-Z2IO Transmitting at the Lowest Frequency

Frequency (MHz)	Detector	Antenna Polarity	Receiver Reading (dBμV)	Correction Factor (dB)	Field Strength (dBμV/m)	Limit (dBμV/m)	Margin (dB)
4880.0	Peak	Vertical	11.0	39.2	50.2	74.0	-23.8
4880.0	Average	Vertical	2.5	39.2	41.7	54.0	-12.3
4880.0	Peak	Horizontal	11.1	39.2	50.3	74.0	-23.7
4880.0	Average	Horizontal	2.7	39.2	41.9	54.0	-12.1
7320.0	Peak	Vertical	10.7	43.9	54.6	74.0	-19.4
7320.0	Average	Vertical	1.6	43.9	45.5	54.0	-8.5
7320.0	Peak	Horizontal	8.4	43.9	52.3	74.0	-21.7
7320.0	Average	Horizontal	-1.4	43.9	42.5	54.0	-11.5

Table 6: C4-Z2IO Transmitting at the Middle Frequency

Frequency (MHz)	Detector	Antenna Polarity	Receiver Reading (dBμV)	Correction Factor (dB)	Field Strength (dBμV/m)	Limit (dBμV/m)	Margin (dB)
4950.0	Peak	Vertical	8.4	39.4	47.8	74.0	-26.2
4950.0	Average	Vertical	-0.6	39.4	38.8	54.0	-15.2
4950.0	Peak	Horizontal	11.6	39.4	51.0	74.0	-23.0
4950.0	Average	Horizontal	3.6	39.4	43.0	54.0	-11.0
7425.0	Peak	Vertical	6.8	44.2	51.0	74.0	-23.0
7425.0	Average	Vertical	-3.5	44.2	40.7	54.0	-13.3
7425.0	Peak	Horizontal	6.8	44.2	51.0	74.0	-23.0
7425.0	Average	Horizontal	-4.9	44.2	39.3	54.0	-14.7

Table 7: C4-Z2IO Transmitting at the Highest Frequency

Frequency (MHz)	Detector	Antenna Polarity	Receiver Reading (dBμV)	Correction Factor (dB)	Field Strength (dBμV/m)	Limit (dBμV/m)	Margin (dB)
4810.0	Peak	Vertical	17.9	39.0	56.9	74.0	-17.1
4810.0	Average	Vertical	10.9	39.0	49.9	54.0	-4.1
4810.0	Peak	Horizontal	16.0	39.0	55.0	74.0	-19.0
4810.0	Average	Horizontal	8.7	39.0	47.7	54.0	-6.3
7215.0	Peak	Vertical	11.7	43.5	55.2	74.0	-18.8
7215.0	Average	Vertical	2.9	43.5	46.4	54.0	-7.6
7215.0	Peak	Horizontal	9.7	43.5	53.2	74.0	-20.8
7215.0	Average	Horizontal	0.5	43.5	44.0	54.0	-10.0

Table 8: C4-Z2C Transmitting at the Lowest Frequency

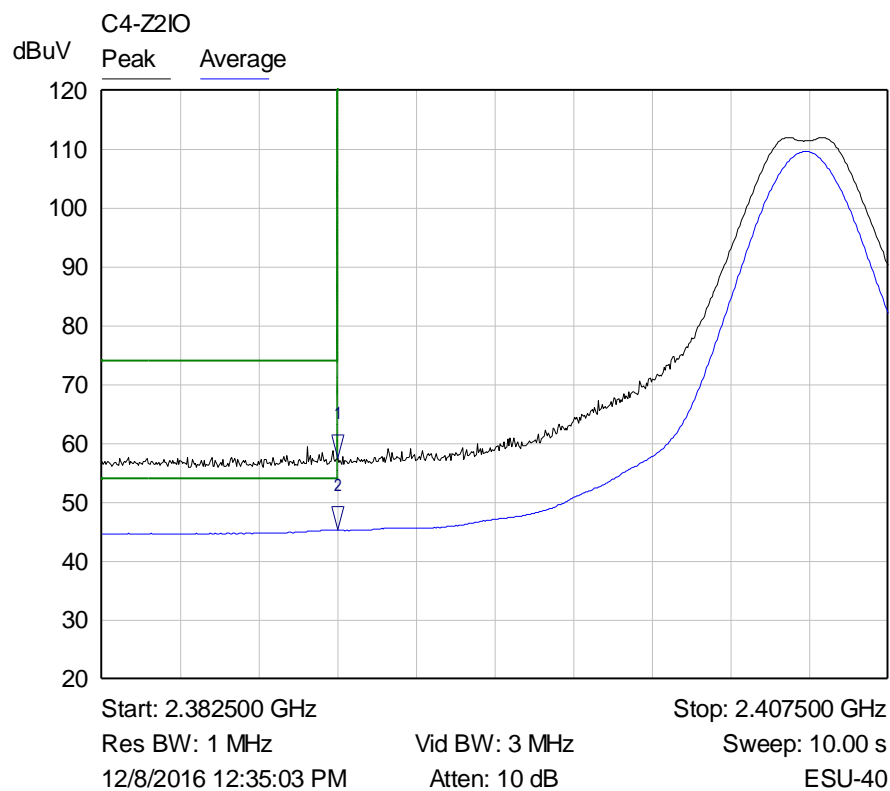
Frequency (MHz)	Detector	Antenna Polarity	Receiver Reading (dBμV)	Correction Factor (dB)	Field Strength (dBμV/m)	Limit (dBμV/m)	Margin (dB)
4880.0	Peak	Vertical	16.5	39.2	55.7	74.0	-18.3
4880.0	Average	Vertical	9.4	39.2	48.6	54.0	-5.4
4880.0	Peak	Horizontal	14.3	39.2	53.5	74.0	-20.5
4880.0	Average	Horizontal	6.7	39.2	45.9	54.0	-8.1
7320.0	Peak	Vertical	8.5	43.9	52.4	74.0	-21.6
7320.0	Average	Vertical	-1.8	43.9	42.1	54.0	-11.9
7320.0	Peak	Horizontal	9.9	43.9	53.8	74.0	-20.2
7320.0	Average	Horizontal	0.3	43.9	44.2	54.0	-9.8

Table 9: C4-Z2C Transmitting at the Middle Frequency

Frequency (MHz)	Detector	Antenna Polarity	Receiver Reading (dB μ V)	Correction Factor (dB)	Field Strength (dB μ V/m)	Limit (dB μ V/m)	Margin (dB)
4950.0	Peak	Vertical	13.6	39.4	53.0	74.0	-21.0
4950.0	Average	Vertical	5.8	39.4	45.2	54.0	-8.8
4950.0	Peak	Horizontal	15.5	39.4	54.9	74.0	-19.1
4950.0	Average	Horizontal	8.3	39.4	47.7	54.0	-6.3
7425.0	Peak	Vertical	9.2	44.2	53.4	74.0	-20.6
7425.0	Average	Vertical	-0.6	44.2	43.6	54.0	-10.4
7425.0	Peak	Horizontal	8.5	44.2	52.7	74.0	-21.3
7425.0	Average	Horizontal	-1.3	44.2	42.9	54.0	-11.1

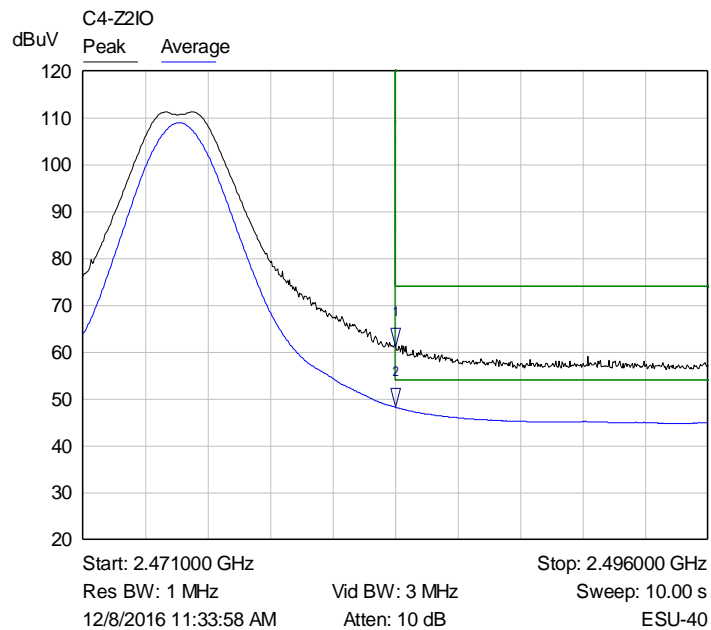
Table 10: C4-Z2C Transmitting at the Highest Frequency

No other emissions were seen in the restricted bands



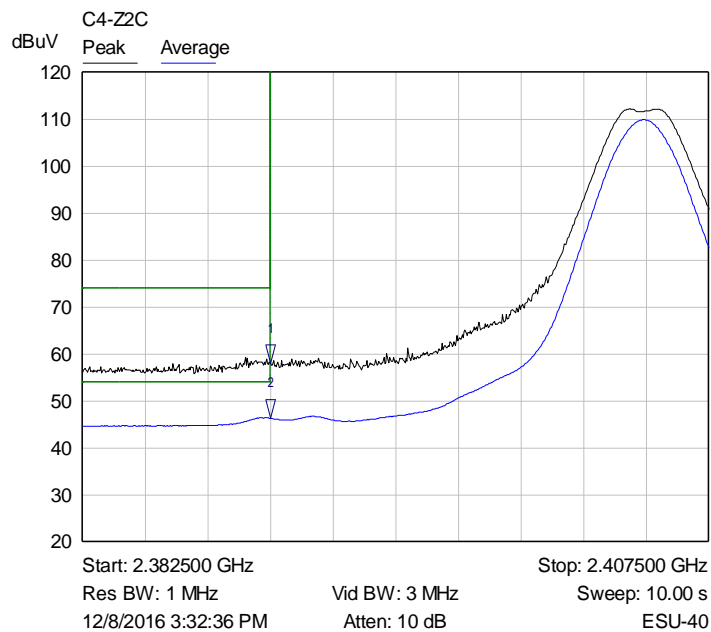
Mkr	Trace	X-Axis	Value	Notes
1 ▾	Peak	2.389992 GHz	57.564400 dBuV	
2 ▾	Average	2.389992 GHz	45.311111 dBuV	

Graph 9: C4-Z2IO Radiated Lower Band Edge Plot



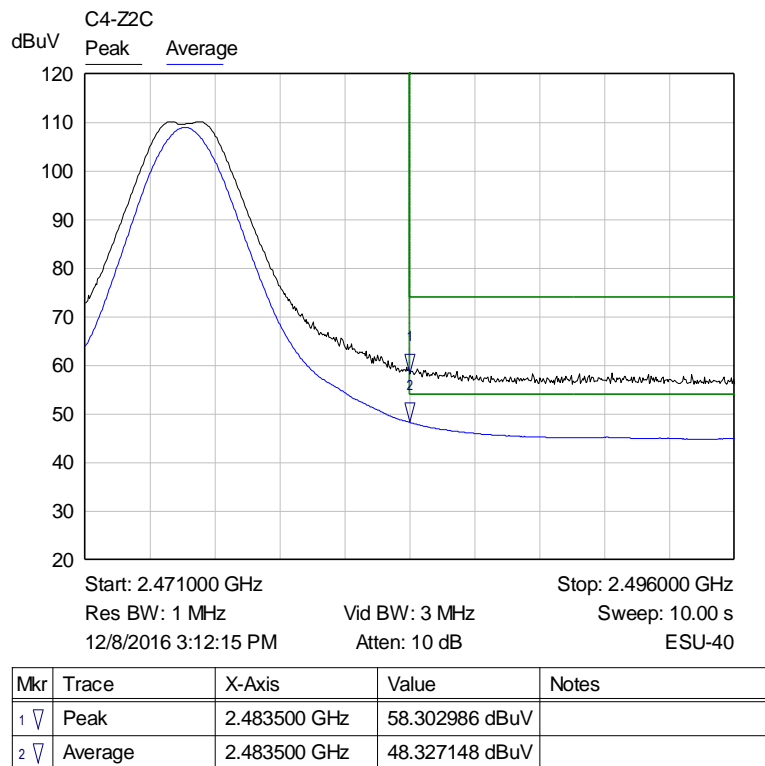
Mkr	Trace	X-Axis	Value	Notes
1 ▽	Peak	2.483500 GHz	61.238625 dBuV	
2 ▽	Average	2.483500 GHz	48.327148 dBuV	

Graph 10: C4-Z2IO Radiated Upper Band Edge Plot



Mkr	Trace	X-Axis	Value	Notes
1 ▽	Peak	2.389992 GHz	57.945724 dBuV	
2 ▽	Average	2.389992 GHz	46.331711 dBuV	

Graph 11: C4-Z2C Radiated Lower Band Edge Plot



Graph 12: C4-Z2C Radiated Upper Band Edge Plot

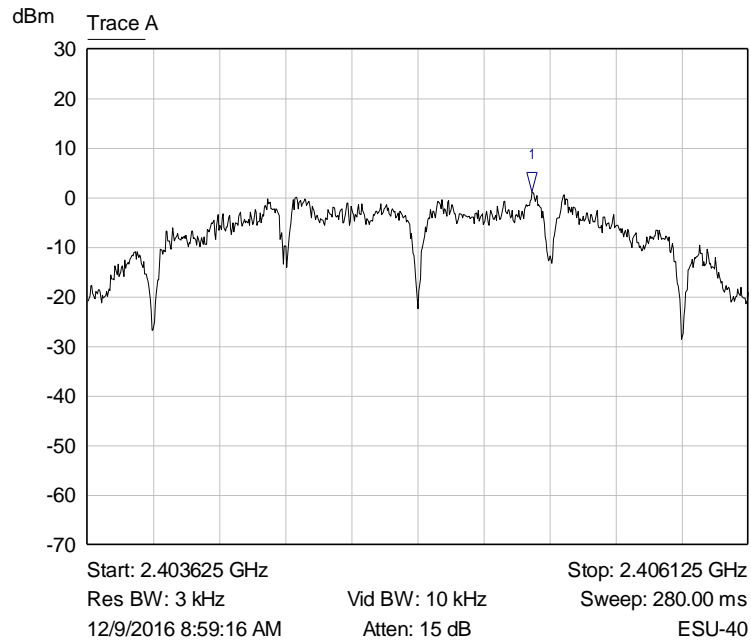
6.2.6 §15.247(e) Peak Power Spectral Density

The peak power spectral density conducted from the intentional radiator to the antenna shall not be greater than 8 dBm in any 3 kHz band during any time interval of continuous transmission. Results of this testing are summarized.

Frequency (MHz)	Measurement (dBm)	Criteria (dBm)
2405	1.22	8.0
2440	0.87	8.0
2475	0.66	8.0

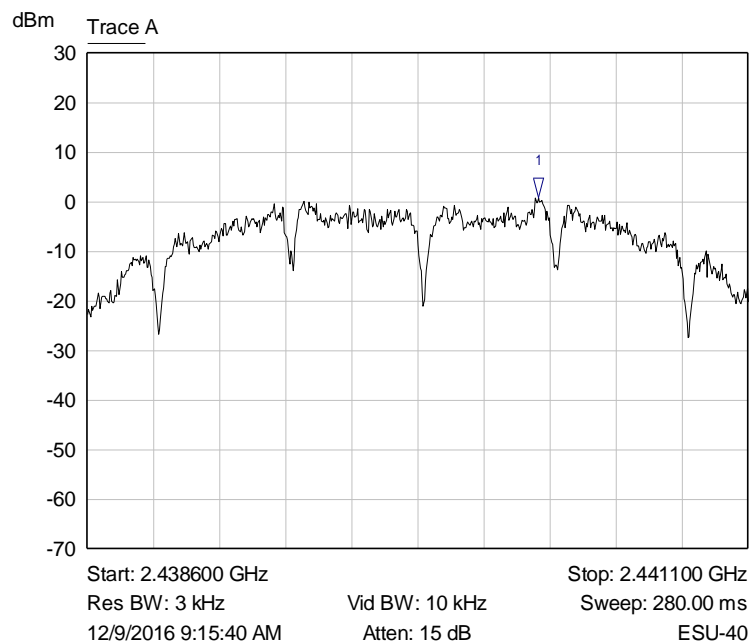
Result

The maximum peak power spectral density was less than the limit of 8 dBm; therefore, the EUT complies with the specification.

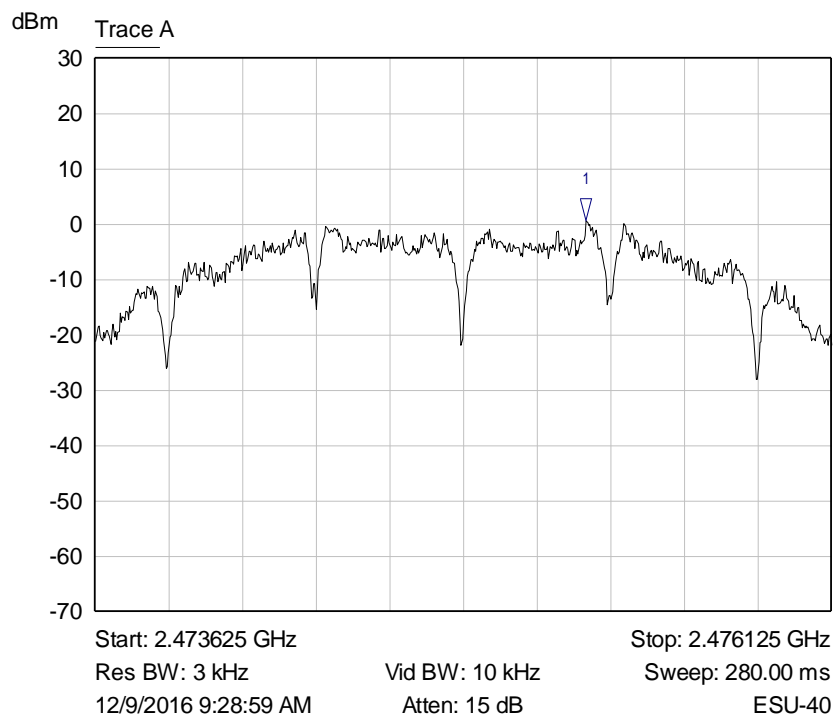


Mkr	Trace	X-Axis	Value	Notes
1 ▾	Trace A	2.405308 GHz	1.220075 dBm	

Graph 13: Lowest Channel 3 kHz PSD Plot



Mkr	Trace	X-Axis	Value	Notes
1 ▾	Trace A	2.440307 GHz	0.872927 dBm	

Graph 14: Middle Channel 3 kHz PSD Plot


Mkr	Trace	X-Axis	Value	Notes
1 ▽	Trace A	2.475292 GHz	0.656186 dBm	

Graph 15: Highest Channel Output 3 kHz PSD Plot

7 Test Procedures and Test Equipment

7.1 Conducted Emissions at Mains Ports

The conducted emissions at mains and telecommunications ports from the EUT were measured using a spectrum analyzer with a quasi-peak adapter for peak, quasi-peak and average readings. The quasi-peak adapter uses a bandwidth of 9 kHz, with the spectrum analyzer's resolution bandwidth set at 100 kHz, for readings in the 150 kHz to 30 MHz frequency ranges.

The conducted emissions at mains ports measurements are performed in a screen room using a (50 Ω /50 μ H) Line Impedance Stabilization Network (LISN).

Where mains flexible power cords are longer than 1 m, the excess cable is folded back and forth as far as possible so as to form a bundle not exceeding 0.4 m in length.

Where the EUT is a collection of devices with each device having its own power cord, the point of connection for the LISN is determined from the following rules:

- Each power cord, which is terminated in a mains supply plug, shall be tested separately.
- Power cords, which are not specified by the manufacturer to be connected via a host unit, shall be tested separately.
- Power cords which are specified by the manufacturer to be connected via a host unit or other power supplying equipment shall be connected to that host unit and the power cords of that host unit connected to the LISN and tested.
- Where a special connection is specified, the necessary hardware to effect the connection is supplied by the manufacturer for the testing purpose.
- When testing equipment with multiple mains cords, those cords not under test are connected to an artificial mains network (AMN) different than the AMN used for the mains cord under test.

For testing, desktop EUT are placed on a non-conducting table at least 0.8 meters from the metallic floor and placed 40 cm from the vertical coupling plane (copper plating in the wall behind EUT table). Floor standing equipment is placed directly on the earth grounded floor.

Type of Equipment	Manufacturer	Model Number	Asset Number	Date of Last Calibration	Due Date of Calibration
Spectrum Analyzer	Hewlett Packard	8566B	V034141	03/28/2016	03/28/2017
Quasi-Peak Detector	Hewlett Packard	85650A	V033345	03/03/2016	03/03/2017
LISN	VPI Labs	LISN-COMM-50	V034042	02/26/2016	02/26/2017
Conductance Cable Wanship Site #2	VPI Labs	Cable J	V034832	01/11/2016	01/11/2017
Transient Limiter	Hewlett Packard	11947A	V033591	01/11/2016	01/11/2017
Test Software (AC)	VPI Labs	Revision 01	V035674	N/A	N/A

Table 11: List of equipment used for conducted emissions testing at mains ports.

All the equipment listed above is calibrated using either an independent calibration laboratory or VPI Laboratories, Inc. personnel at intervals defined in ANSI C63.4:2014 following outlined calibration procedures. All measurement instrumentation is traceable to the National Institute of Standards and

Technology (NIST). Supporting documentation relative to tractability is on file and is available for examination upon request.

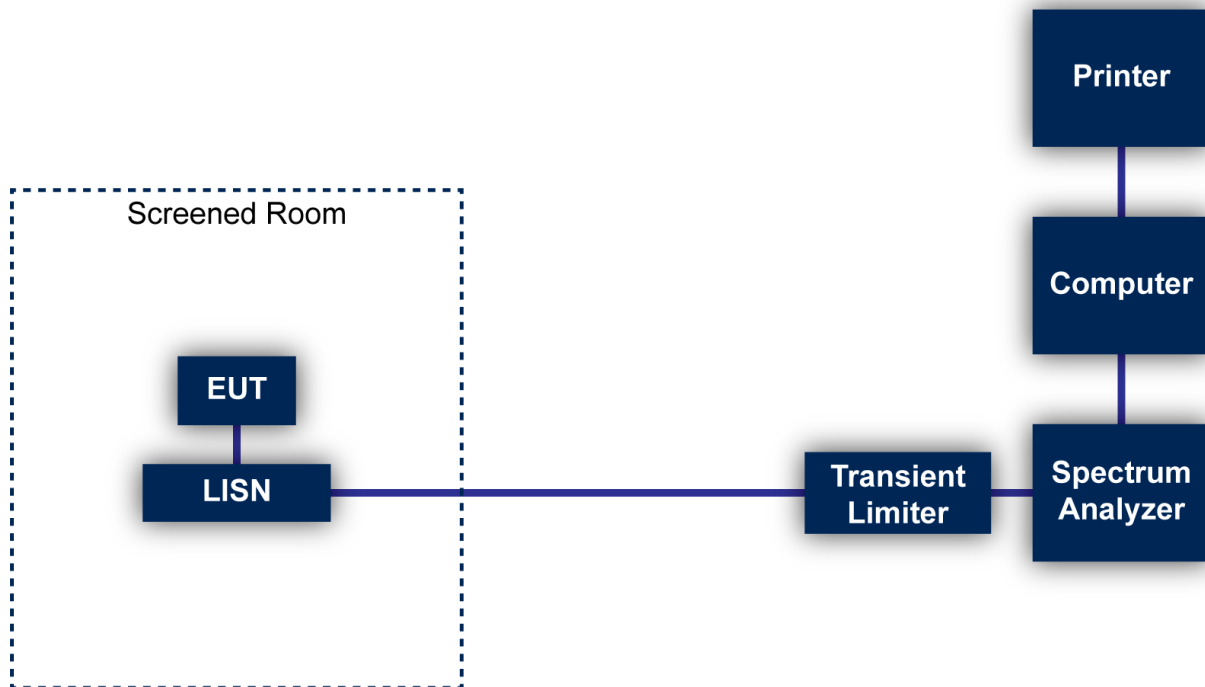


Figure 1: Conducted Emissions Test

7.2 Direct Connection at the Antenna Port Tests

Type of Equipment	Manufacturer	Model Number	Asset Number	Date of Last Calibration	Due Date of Calibration
Spectrum Analyzer/Receiver	Rohde & Schwarz	ESU40	V033119	06/17/2016	06/17/2017
6 dB Attenuator	Pasternack	PE7004-6	V033645	01/15/2016	01/15/2017
Low Loss Cable	N/A	N/A	V034173	01/15/2016	01/15/2017

An independent calibration laboratory or VPI Laboratories, Inc. personnel calibrates all the equipment listed above at intervals defined in ANSI C63.4:2014 following outlined calibration procedures. All measurement instrumentation is traceable to the National Institute of Standards and Technology (NIST). Supporting documentation relative to tractability is on file and is available for examination upon request.

7.2.1 Test Configuration Block Diagram



Figure 2: Direct Connection at the Antenna Port Test

7.3 Radiated Emissions

The radiated emissions from the EUT were measured using a spectrum analyzer with a quasi-peak adapter for peak and quasi-peak readings.

A preamplifier with a fixed gain of 26 dB and a power amplifier with a fixed gain of 22 dB were used to increase the sensitivity of the measuring instrumentation. The quasi-peak adapter uses a bandwidth of 120 kHz, with the spectrum analyzer's resolution bandwidth set at 1 MHz, for readings in the 30 to 1000 MHz frequency ranges. For frequencies below 30 MHz, a 9 kHz resolution Bandwidth was used.

A loop antenna was used to measure frequencies below 30 MHz. A biconilog antenna was used to measure the frequency range of 30 to 1000 MHz, at a distance of 10 meters from the EUT. The readings obtained by these antennas are correlated to the levels obtained with a tuned dipole antenna by adding antenna factors. A double-ridged guide antenna was used to measure the emissions at frequencies above 1000 MHz at a distance of 3 and/or 1 meter from the EUT.

The configuration of the EUT was varied to find the maximum radiated emission. The EUT was connected to the peripherals listed in Section 2.3 via the interconnecting cables listed in Section 2.4. A technician manually manipulated these interconnecting cables to obtain worst-case radiated emissions. The EUT was rotated 360 degrees, and the antenna height was varied from 1 to 4 meters to find the maximum radiated emission. Where there were multiple interface ports all of the same type, cables are either placed on all of the ports or cables added to these ports until the emissions do not increase by more than 2 dB.

Desktop EUT are measured on a non-conducting table 0.8 meters above the ground plane. For frequencies above 1000 MHz, the EUT is placed on a table 1.5 meters above the ground plane. The table is placed on a turntable, which is level with the ground plane. For equipment normally placed on floors, the equipment shall be placed directly on the turntable.

For radiated emissions testing that is performed at distances closer than the specified distance; an inverse proportionality factor of 20 dB per decade is used to normalize the measured data for determining compliance.

Type of Equipment	Manufacturer	Model Number	Asset Number	Date of Last Calibration	Due Date of Calibration
Spectrum Analyzer/Receiver	Rohde & Schwarz	ESU40	V033119	06/17/2016	06/17/2017
Spectrum Analyzer	Hewlett Packard	8566B	V034141	03/28/2016	03/28/2017

Type of Equipment	Manufacturer	Model Number	Asset Number	Date of Last Calibration	Due Date of Calibration
Quasi-Peak Detector	Hewlett Packard	85650A	V033345	03/03/2016	03/03/2017
Loop Antenna	EMCO	6502	V034540	03/17/2015	03/17/2017
Biconilog Antenna	EMCO	3142E-PA	V035736	06/24/2016	06/24/2017
Double Ridged Guide Antenna	EMCO	3115	V033469	02/09/2016	02/09/2018
Standard Gain Horn	ETS-Lindgren	3160-09	V034223	ICO	ICO
High Frequency Amplifier	Miteq	AFS4-001018000-35-10P-4	V033997	01/15/2016	01/15/2017
900 MHz High Pass Filter	Micro-Tronics	HPM50108-03	V034185	01/15/2016	01/15/2017
2.4 GHz Notch Filter	Micro-Tronics	BRM50702-03	V034213	01/15/2016	01/15/2017
6' High Frequency Cable	Microcoax	UFB197C-0-0720-000000	V033638	01/11/2016	01/11/2017
20' High Frequency Cable	Microcoax	UFB197C-1-3120-000000	V033979	01/15/2016	01/15/2017
3 Meter Radiated Emissions Cable Wanship Site #2	Microcoax	UFB205A-0-4700-000000	V033639	01/11/2016	01/11/2017
Pre/Power-Amplifier	Hewlett Packard	8447F	V034218	09/07/2016	09/07/2017
Test Software (FCC)	VPI Labs	Revision 01	V035673	N/A	N/A

Table 12: List of equipment used for radiated emissions testing.

All the equipment listed above is calibrated using either an independent calibration laboratory or VPI Laboratories, Inc. personnel at intervals defined in ANSI C63.4:2014 following outlined calibration procedures. All measurement instrumentation is traceable to the National Institute of Standards and Technology (NIST). Supporting documentation relative to tractability is on file and is available for examination upon request.

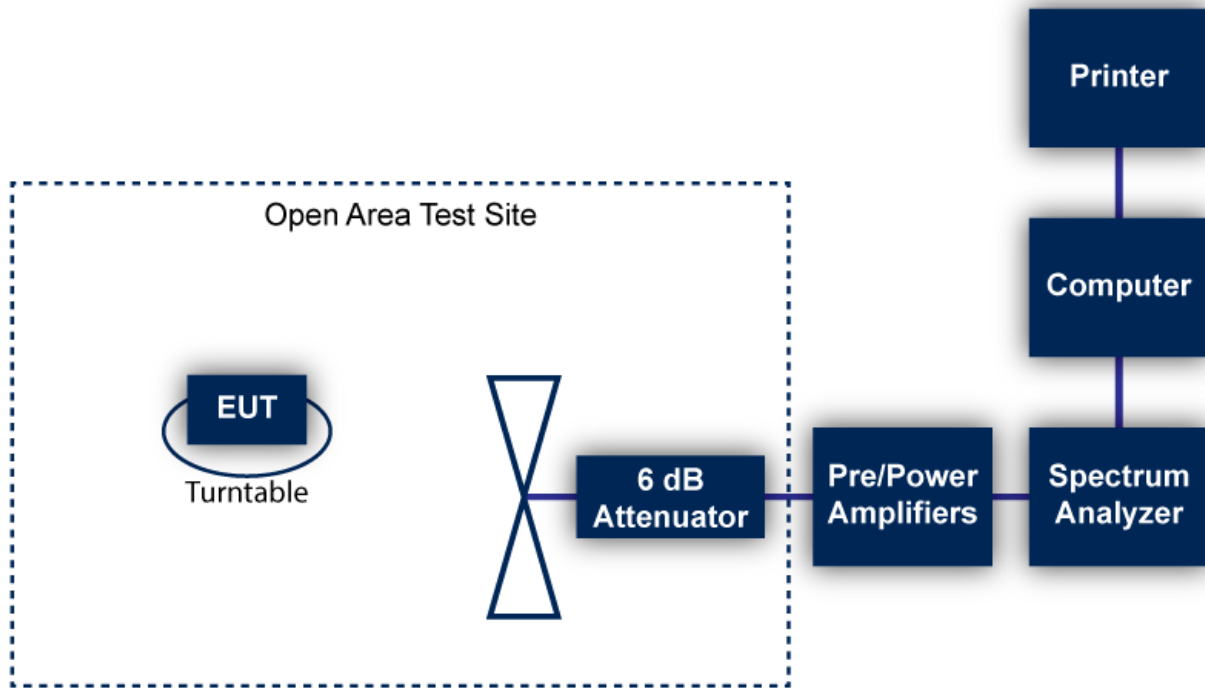


Figure 3: Radiated Emissions Test

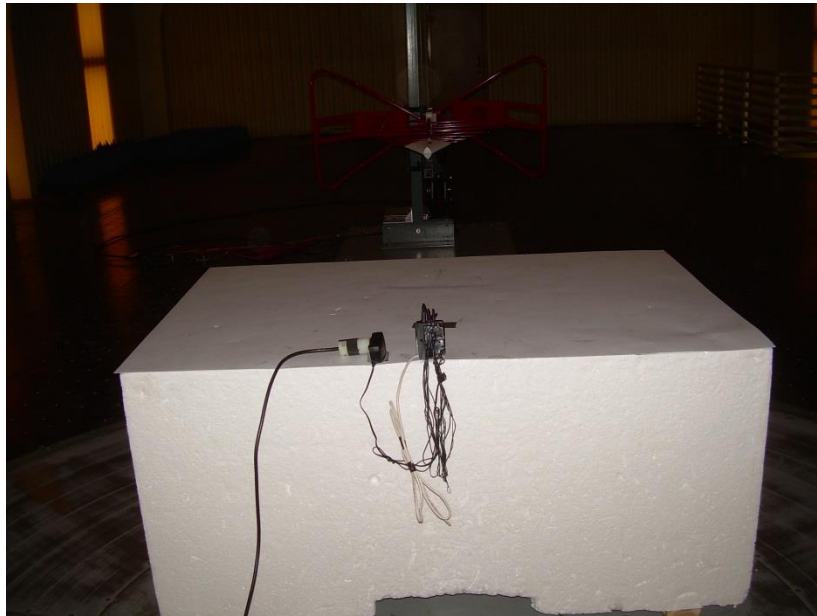
7.4 Measurement Uncertainty

Test	Uncertainty (\pm dB)	Confidence (%)
Conducted Emissions	2.8	95
Radiated Emission (9 kHz to 30 MHz)	3.3	95
Radiated Emissions (30 MHz to 1 GHz)	3.4	95
Radiated Emissions (1 GHz to 18 GHz)	5.0	95
Radiated Emissions (18 GHz to 40 GHz)	4.1	95

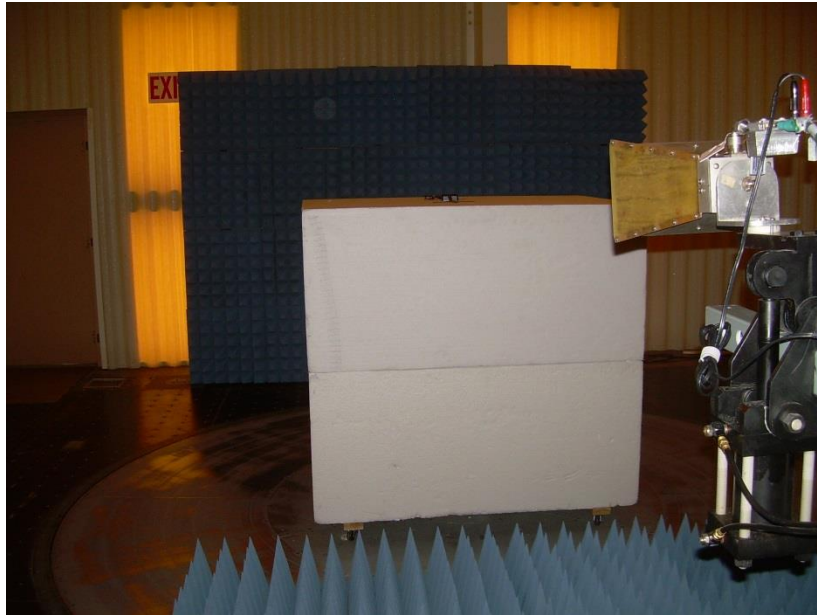
8 Photographs



Photograph 1: Front View Radiated Emissions Below 1000 MHz – C4-Z2IO Flat



Photograph 2: Back View Radiated Emissions 30 – 1000 MHz – C4-Z2IO Vertical



Photograph 3: Front View Radiated Emissions Above 1000 MHz – C4-Z2IO Flat



Photograph 4: Back View Radiated Emissions Above 1000 MHz – C4-Z2IO On Edge



Photograph 5: Front View Radiated Emissions Configuration – C4-Z2C



Photograph 6 - Front View Conducted Emissions Worst Case Configuration – C4-Z2IO



Photograph 7 - Back View Conducted Emissions Worst Case Configuration – C4-Z2IO



Photograph 8 - Front View of the EUT



Photograph 9 - Back View of the EUT



Photograph 10 – Top View of the C4-Z2IO



Photograph 11 – Top View of the C4-Z2C



Photograph 12 – Bottom View of the EUT



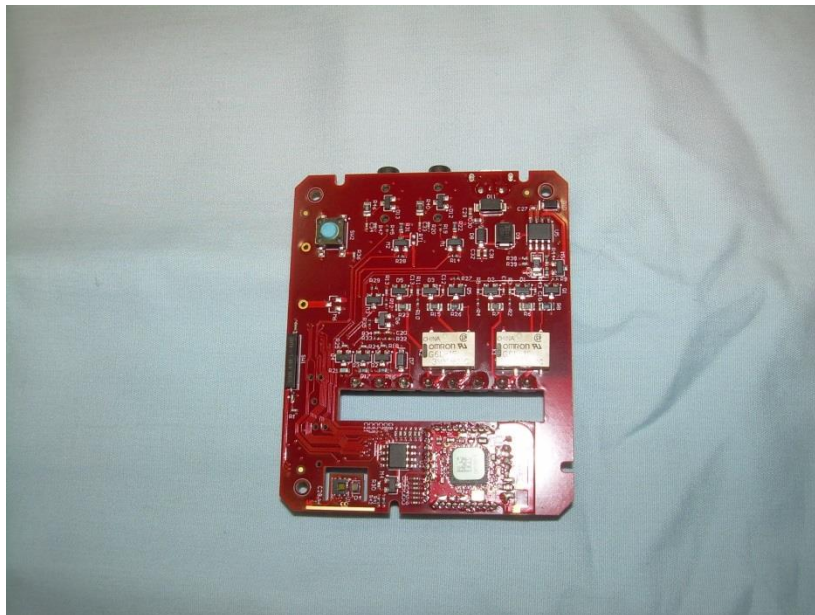
Photograph 13 – Left Side View of the EUT



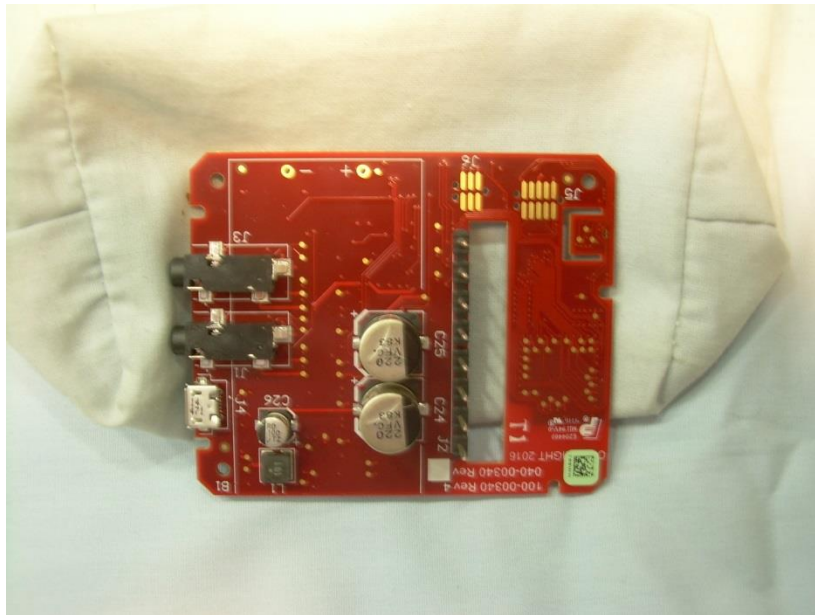
Photograph 14 – Right Side View of the EUT



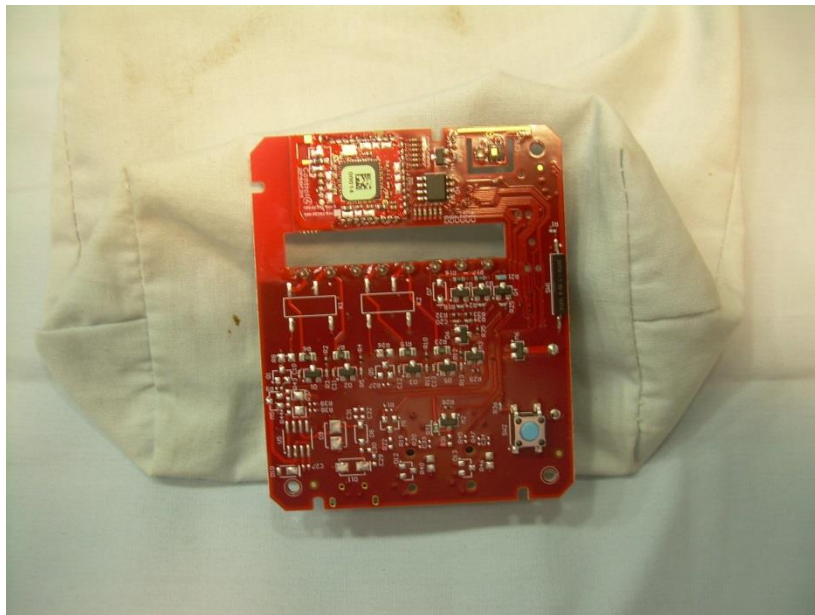
Photograph 15 – View of the Back Panel of the EUT



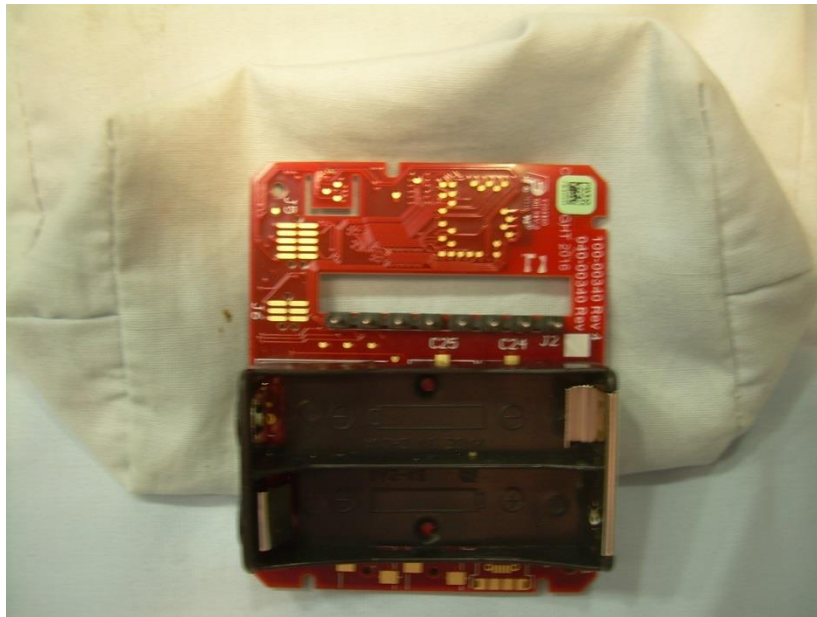
Photograph 16 – Front Side of the C4-Z2IO PCB



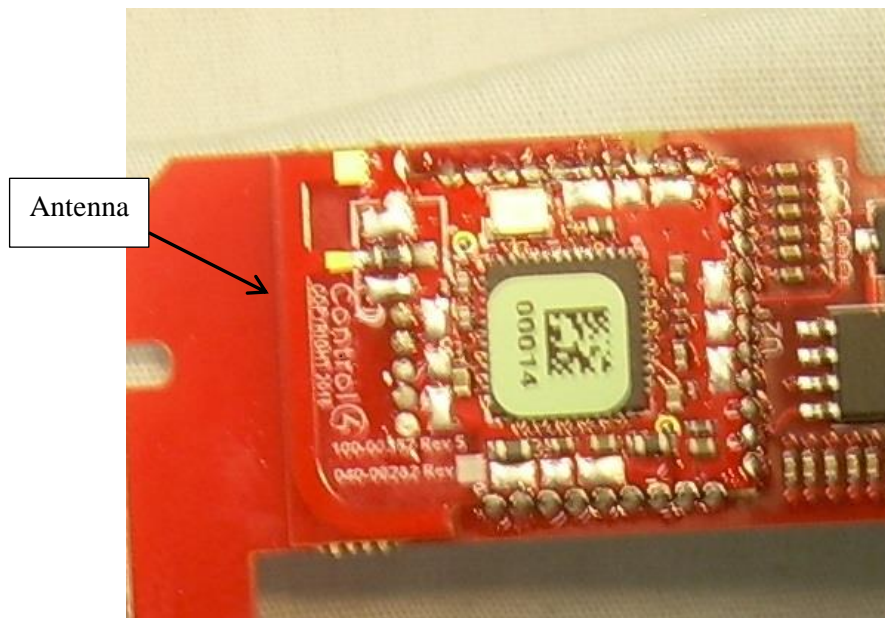
Photograph 17 – Back Side of the C4-Z2IO PCB



Photograph 18 – Front Side of the C4-Z2C PCB

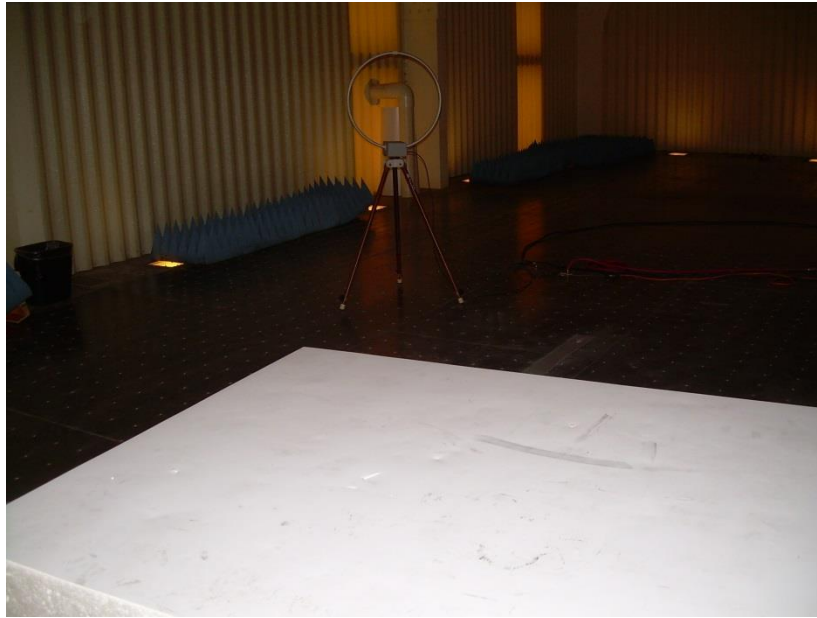


Photograph 19 – Back Side of the C4-Z2C PCB

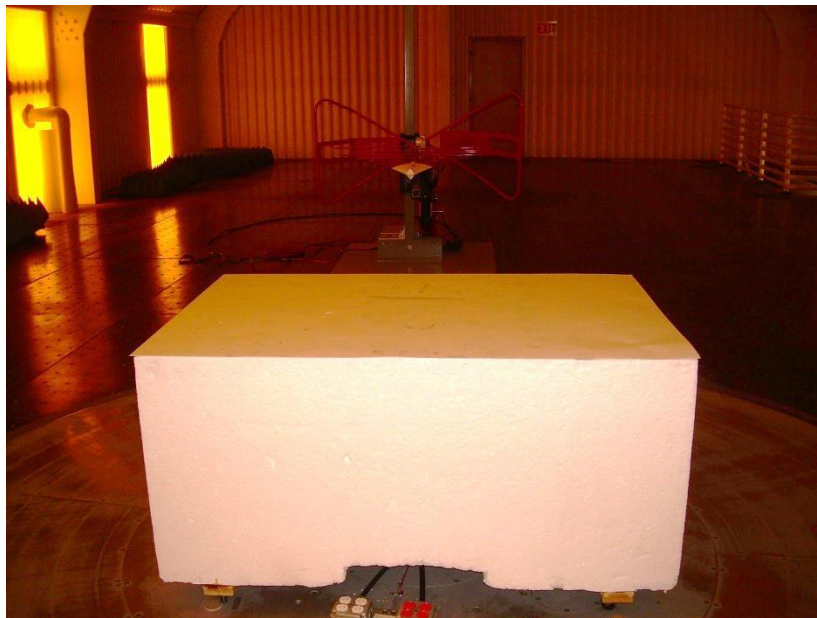


Photograph 20 – View of the RF Section of the EUT

Reference Photos of the Site Test Setup Configurations for the Frequency Ranges



Photograph 21: Test Setup for Emissions Below 30 MHz



Photograph 22: Test Setup for Emission from 30 MHz to 1000 MHz



Photograph 23: Test Setup for Emissions Above 1000 MHz

--- End of Report ---