

# SAR TEST REPORT

**REPORT NO.:** SA920331R05

**MODEL NO.:** GTP-100

**RECEIVED:** May 5, 2003

**TESTED:** May 6, 2003

**APPLICANT:** G-TEK Electronics Corporation

**ADDRESS:** 16F,106, Sec.1,Hsin-Tai 5th Road, Hsichih,  
Taipei county, Taiwan, R.O.C.

**ISSUED BY:** Advance Data Technology Corporation

**LAB LOCATION:** 47 14th Lin, Chiapau Tsun, Linko, Taipei,  
Taiwan, R.O.C.

This test report consists of 16 pages in total except Appendix. It may be duplicated completely for legal use with the approval of the applicant. It should not be reproduced except in full, without the written approval of our laboratory. The client should not use it to claim product endorsement by CNLA, NVLAP or any government agencies. The test results in the report only apply to the tested sample.

## Table of Contents

1.	CERTIFICATION .....	3
2.	GENERAL INFORMATION .....	4
2.1	GENERAL DESCRIPTION OF EUT .....	4
2.2	GENERAL DESCRIPTION OF APPLIED STANDARDS .....	4
2.3	GENERAL INFORMATION OF THE SAR SYSTEM .....	5
2.4	GENERAL DESCRIPTION OF THE PROBE SCAN RULE .....	7
3.	DESCRIPTION OF TEST MODES AND CONFIGURATIONS .....	8
4.	DESCRIPTION OF SUPPORT UNITS .....	10
5.	TEST RESULTS .....	10
5.1	TEST PROCEDURES .....	10
5.2	MEASURED SAR RESULT .....	11
5.3	SAR LIMITS .....	12
5.4	EUT CONDUCTED POWER VARIATION .....	12
5.5	TISSUE .....	13
5.6	TEST EQUIPMENT FOR TISSUE PROPERTY .....	13
6.	SYSTEM VALIDATION .....	14
7.	MEASUREMENT UNCERTAINTIES .....	15
8.	INFORMATION ON THE TESTING LABORATORIES .....	16

APPENDIX A: TEST CONFIGURATIONS AND TEST DATA

APPENDIX B: ADT SAR MEASUREMENT SYSTEM

APPENDIX C: PHOTOGRAPHS OF SYSTEM VALIDATION

APPENDIX D: SYSTEM CERTIFICATE & CALIBRATION



## 1. CERTIFICATION

**PRODUCT :** Tablet PC  
**MODEL NO. :** GTP-100  
**BRAND NAME :** G-TEK  
**APPLICANT :** G-TEK Electronics Corporation  
**STANDARDS :** 47 CFR Part 2 (Section 2.1093), FCC OET Bulletin 65,  
Supplement C (01-01), RSS-102

We, **Advance Data Technology Corporation**, hereby certify that one sample of the designation has been tested in our facility on 6<sup>th</sup> May. 2003. The test record, data evaluation and Equipment Under Test (EUT) configurations represented herein are true and accurate, and it was tested according to the standards listed above. This device was found to be in compliance with the Specific Absorption Rate (SAR) requirement specified in FCC part 2.1093 under General Population / Uncontrolled Exposure condition.

**CHECKED BY :** Bunny Yao **DATE :** May 08, 2003  
Bunny Yao

**APPROVED BY :** Dr. Alan Lane **DATE :** May 08, 2003  
Dr. Alan Lane, JVP

## 2. GENERAL INFORMATION

### 2.1 GENERAL DESCRIPTION OF EUT

<b>PRODUCT</b>	Tablet PC
<b>MODEL NO.</b>	GTP-100
<b>POWER SUPPLY</b>	3.3VDC powered by host equipment
<b>CLASSIFICATION</b>	Portable device, production unit
<b>MODULATION TYPE</b>	BPSK, QPSK, CCK
<b>RADIO TECHNOLOGY</b>	DSSS
<b>TRANSFER RATE</b>	1~11Mbps
<b>FREQUENCY RANGE</b>	2412MHz ~ 2462MHz
<b>NUMBER OF CHANNEL</b>	11
<b>CONDUCTED OUTPUT POWER</b>	40.92mW
<b>ANTENNA TYPE</b>	Dipole Antenna
<b>PEAK SAR</b>	0.363W/kg
<b>DATA CABLE</b>	NA
<b>I/O PORTS</b>	Mini PCI
<b>ASSOCIATED DEVICES</b>	NA

### 2.2 GENERAL DESCRIPTION OF APPLIED STANDARDS

According to the specifications of the manufacturer, this product must comply with the requirements of the following standards:

**FCC 47 CFR Part 2 (2.1093)**  
**FCC OET Bulletin 65, Supplement C (01- 01)**  
**RSS-102**

All tests have been performed and recorded as per the above standards.

## 2.3 GENERAL INFORMATION OF THE SAR SYSTEM

DASY4 (**software 4.1, build 33**) consists of high precision robotics system, probe alignment sensor, phantom, robot controller, controlled PC and near-field probe. The robot includes six axis that can move to the precision position of the DASY4 software defined. The DASY4 software can define the area which is detected by the probe. The robot is connected to controlled box. Controlled PC is connected to the controlled robot box. The DAE includes amplifier, signal multiplexing, AD converter, offset measurement, surface detection. It is connected to the Electro-optical coupler (ECO). The ECO performs the conversion from the optical into digital electric signal of the DAE and transfers data to the PC.

### ET3DV6 ISOTROPIC E-FIELD PROBE

<b>Construction</b>	Symmetrical design with triangular core. Built-in optical fiber for surface detection system. Built-in shielding against static charges. PEEK enclosure material (resistant to organic solvents, e.g., glycolether).
<b>Calibration</b>	Basic Broad Band Calibration in air: 10-2500 MHz Conversion Factors (CF) for HSL 900 and HSL 1800 CF-Calibration for other liquids and frequencies upon request
<b>Frequency</b>	10 MHz to 3 GHz; Linearity: $\pm 0.2$ dB (30 MHz to 3 GHz)
<b>Directivity</b>	$\pm 0.2$ dB in HSL (rotation around probe axis) $\pm 0.4$ Db in HSL (rotation normal to probe axis)
<b>Dynamic Range</b>	5 $\mu$ W/g to > 100 mW/g; Linearity: $\pm 0.2$ dB
<b>Optical Surface Detection</b>	$\pm 0.2$ mm repeatability in air and clear liquids over diffuse reflecting surfaces
<b>Dimensions</b>	Overall length: 330 mm (Tip Length: 16 mm) Tip diameter: 6.8 mm (Body diameter: 12 mm) Distance from probe tip to dipole centers: 2.7 mm
<b>Application</b>	General dosimetric measurements up to 3 GHz Compliance tests of mobile phones Fast automatic scanning in arbitrary phantoms (ET3DV6)

## TWIN SAM V4.0

<b>Construction</b>	The shell corresponds to the specifications of the Specific Anthropomorphic Mannequin (SAM) phantom defined in IEEE 1528-200X, CENELEC 50361 and IEC 62209. It enables the dosimetric evaluation of left and right hand phone usage as well as body mounted usage at the flat phantom region. A cover prevents evaporation of the liquid. Reference markings on the phantom allow the complete setup of all predefined phantom positions and measurement grids by manually teaching three points with the robot.
<b>Shell Thickness</b>	$2 \pm 0.2$ mm
<b>Filling Volume</b>	Approx. 25 liters
<b>Dimensions</b>	Height: 810 mm; Length: 1000 mm; Width: 500 mm

## SYSTEM VALIDATION KITS: D900V2 – D2450V2

<b>Construction</b>	Symmetrical dipole with 1/4 balun Enables measurement of feedpoint impedance with NWA Matched for use near flat phantoms filled with brain simulating solutions Includes distance holder and tripod adaptor
<b>Calibration</b>	Calibrated SAR value for specified position and input power at the flat phantom in brain simulating solutions
<b>Frequency</b>	900, 1800, 1900, 2450 MHz
<b>Return Loss</b>	> 20 dB at specified validation position
<b>Power Capability</b>	> 100 W ( $f < 1\text{GHz}$ ); > 40 W ( $f > 1\text{GHz}$ )
<b>Options</b>	Dipoles for other frequencies or solutions and other calibration conditions upon request
<b>Dimensions</b>	D900V2: dipole length: 149 mm; overall height: 83.3mm D1800V2: dipole length: 72 mm; overall height: 41.2 mm D1900V2: dipole length: 68 mm; overall height: 39.5 mm D2450V2: dipole length: 51.5 mm; overall height: 30.6 mm



## 2.4 GENERAL DESCRIPTION OF THE PROBE SCAN RULE

The maximum search is automatically performed after each coarse scan measurement. It is based on splines in two or three dimensions. The procedure can find the maximum for most SAR distributions even with relatively large grid spacing. After the coarse scan measurement, the probe is automatically moved to a position at the interpolated maximum. The following scan can directly use this position for reference, e.g., for a finer resolution grid or the cube evaluations.

The 1g peak evaluations are only available for the predefined cube 5x5x7 scans. The routines are verified and optimized for the grid dimensions used in these cube measurements. The measured volume of 32x32x30mm contains about 35g of tissue. The first procedure is an extrapolation (incl. boundary correction) to get the points between the lowest measured plane and the surface. The next step uses 3D interpolation to get all points within the measured volume in a 1mm grid (35000 points). In the last step, a 1g cube is placed numerically into the volume and its averaged SAR is calculated. This cube is then moved around until the highest averaged SAR is found. If the highest SAR is found at the edge of the measured volume, the system will issue a warning: higher SAR values might be found outside of the measured volume. In that case the cube measurement can be repeated, using the new interpolated maximum as the center.

### 3. DESCRIPTION OF TEST MODES AND CONFIGURATIONS

<b>CARRIER MODULATION UNDER TEST</b>	CCK
<b>CREST FACTOR</b>	1.0
<b>CHANNEL FREQUENCIES UNDER TEST AND ITS CONDUCTED OUTPUT POWER</b>	40.92mW / Ch1: 2412MHz 38.81mW / Ch6: 2437MHz 31.84mW / Ch11: 2462MHz
<b>ANTENNA CONFIGURATION</b>	Dipole
<b>EUT POWER SOURCE</b>	From Host Notebook
<b>HOST POWER SOURCE</b>	Fully Charged Battery



The following test configurations have been applied in this test report:

- Mode 1: The transmission antenna of the tablet PC is located at the upper right of the tablet PC. The antenna is fully retracted and the bottom of the tablet PC contact to the bottom of the flat phantom with 0cm separation distance. The area scan size is 4 x 6 points.
- Mode 2: The transmission antenna of the tablet PC is located at the upper right of the tablet PC. The antenna is fully extended and the bottom of the tablet PC contact to the bottom of the flat phantom with 0cm separation distance. The area scan size is 4 x 6 points.
- Mode 3: The transmission antenna of the tablet PC is located at the upper right of the tablet PC. The antenna is fully retracted and the LCD panel face of the tablet PC is perpendicular to the bottom of the flat phantom. The upper side of the tablet PC contact to the bottom of the flat Phantom. The separation distance is 4mm between the tip of the antenna and the bottom of the flat phantom. The area scan size is 4 x 7 points.
- Mode 4: The transmission antenna of the tablet PC is located at the upper right of the tablet PC. The antenna is fully extended and the LCD panel face of the tablet PC is perpendicular to the bottom of the flat phantom. The tip antenna of the tablet PC contact to the bottom of the flat Phantom. The separation distance is 0mm between the tip of the antenna and the bottom of the flat phantom. The area scan size is 4 x 7 points.
- Mode 5: The same with Mode 3 but the tablet PC has been 90° turned.
- Mode 6: The same with Mode 4 but the tablet PC has been 90° turned.

**NOTE:** Please reference “APPENDIX A” for the photos of test configuration.

## **4. DESCRIPTION OF SUPPORT UNITS**

The EUT has been tested as an independent.

## **5. TEST RESULTS**

### **5.1 TEST PROCEDURES**

The SAR value was calculated via the 3D spline interpolation algorithm which has been implemented in the software of DASY4 SAR measurement system manufactured and calibrated by Schmid & Partner.

The area scan with 20mm x 20mm grid was performed for the highest spatial SAR location. The fine scan with 32mm x 32mm x 30mm volume was performed for SAR value averaged over 1g and 10g spatial volumes.

## 5.2 MEASURED SAR RESULT

VIRONMENTAL ONDITION		Temperature : 23°C, Humidity : 59%RH	
TESTED BY		Bunny Yao	
MODE	CHANNEL	FREQUENCY (MHz)	MEASURED 1g SAR (W/kg)
1	1	2412	0.019
	6	2437	0.017
	11	2462	0.015
2	1	2412	0.040
	6	2437	0.038
	11	2462	0.035
3	1	2412	0.025
	6	2437	0.023
	11	2462	0.020
4	1	2412	0.071
	6	2437	0.070
	11	2462	0.068
5	1	2412	0.284
	6	2437	0.272
	11	2462	0.261
6	1	2412	0.363
	6	2437	0.349
	11	2462	0.317

### NOTE:

1. Test configuration of each mode is described in section 3.
2. In this testing, the limit for General Population Spatial Peak averaged over 1g, **1.6 W/kg**, is applied.
3. Please see the Appendix for the photo of the test configuration and also the data.

### 5.3 SAR LIMITS

HUMAN EXPOSURE	SAR (W/kg)	
	(General Population / Uncontrolled Exposure Environment)	(Occupational / controlled Exposure Environment)
Spatial Average ( whole body)	0.08	0.4
Spatial Peak (averaged over 1 g)	<b>1.6</b>	8.0
Spatial Peak (hands/wrists/feet/ankles averaged over 10 g)	4.0	20.0

### 5.4 EUT CONDUCTED POWER VARIATION

The variation of the EUT conducted power measured before and after SAR testing should not over 5%. The test procedures for conducted power level is described in FCC rule part 2.1046.

The maximum variation in this testing is listed in the following table.

Channel	Conducted Power (Before)	Conducted Power (After)	Variation (%)
1	40.92	40.15	-1.88
6	38.81	38.20	-1.57
11	31.84	31.38	-1.44

## 5.5 TISSUE

Tissue Components		
Ingredient	Brain	Muscle
Water	55.20%	69.95%
Glycol Monobutyl	44.80%	30.00%
Salt	-	0.05%

The tissue of 2450MHz for brain and body was well prepared according to the standard procedures. The required and measured dielectric parameters are listed in this table.

	Brain		Muscle	
	Required	Measured	Required	Measured
Permittivity ( $\epsilon_r$ )	$39.2 \pm 5\%$	NA	$52.7 \pm 5\%$	52.81
Conductivity ( $\sigma$ )	$1.8 \pm 5\%$	NA	$1.95 \pm 5\%$	1.99

The measured parameters of the used tissue.

Tissue Prepared and Measured on 6 <sup>th</sup> May. 2003				
	Brain		Muscle	
	Value	Freq. (MHz)	Value	Freq.(MHz)
Permittivity	NA	NA	52.90	2412
	NA	NA	52.85	2437
	NA	NA	52.76	2462
Conductivity	NA	NA	1.92	2412
	NA	NA	1.96	2437
	NA	NA	2.02	2462

## 5.6 TEST EQUIPMENT FOR TISSUE PROPERTY

Item	Name	Provider	Type	Series No.	Calibrated Until
1	Network Analyzer	Agilent	8720ES	NA	May 5, 2004
2	Dielectric Probe	Agilent	85070C	NA	NA

## 6. SYSTEM VALIDATION

The system validation was performed in the flat phantom with equipment listed in the following table. Since the SAR value is calculated from the measured electric field, dielectric constant and conductivity of the body tissue, and the SAR is proportional to the square of the electric field. So, the SAR value will be also proportional to the RF power input to the system validation dipole under the same test environment. In our system validation test, 50mW RF input power was used instead of 250mW used by Schmid & Partner, then the measured SAR will be linearly extrapolated to that of 250mW RF power.

### 6.1 TEST EQUIPMENT

Item	Name	Provider	Type	Series No.	Calibrated Until
1	SAM Phantom	S & P	QD000 P40 CA	PT-1150	NA
2	Validation Dipole	S & P	D2450V2	716	Sept. 25, 2004
3	Signal Generator	R & S	SMP04	10001	May 4, 2004
4	E-Field Probe	S & P	ET3DV6	1687	Sept. 27, 2003
5	DAE	S & P	DAE3 V1	510	April 10, 2004
6	Robot Positioner	Staubli Unimation	NA	NA	NA

### 6.2 VALIDATION RESULT

ENVIRONMENTAL ONDITION	Temperature : 23°C, Humidity : 59%RH		
TESTED BY	Bunny Yao		
2450MHz System Validation Test in Body Tissue			
Required	Measured	Deviation (%)	Separation Distance
12.90 (1g)	12.0	-6.97	1.0cm
6.26 (10g)	5.9	-5.75	1.0cm

**NOTE:** Please see Appendix for the photo of system validation test.

## 7. MEASUREMENT UNCERTAINTIES

	Uncertainty Value	Probability Distribution	Divisor	C <sub>i</sub>	Standard Uncertainty
<b>Test Sample Related</b>					
Test Sample Positioning	±6%	Normal	1	1	±6%
Drift of Output Power	±5%	Rectangular	$\sqrt{3}$	1	±2.9%
<b>Phantom and Setup</b>					
Phantom Uncertainty	±0%	Rectangular	$\sqrt{3}$	1	±0%
Liquid Conductivity(target)	±5%	Rectangular	$\sqrt{3}$	0.5	±1.4%
Liquid Conductivity(meas)	±10%	Rectangular	$\sqrt{3}$	0.5	±2.9%
Liquid Permittivity(target)	±5%	Rectangular	$\sqrt{3}$	0.5	±1.4%
Liquid Permittivity(meas)	±5%	Rectangular	$\sqrt{3}$	0.5	±1.4%
RF Ambient Conditions	±3%	Rectangular	$\sqrt{3}$	1	±1.7%
<b>System Check</b>					
Calibration	± 2.6 %	Normal	1	1	± 2.6 %
Axial isotropy	± 2.3 %	Rectangular	$\sqrt{3}$	(1-cp) <sup>1/2</sup>	± 0.9 %
Hemispherical isotropy	± 9.6 %	Rectangular	$\sqrt{3}$	$\sqrt{cp}$	± 3.9 %
Spatial resolution	± 0.5 %	Rectangular	$\sqrt{3}$	1	± 0.3 %
Boundary effect	± 4.0 %	Rectangular	$\sqrt{3}$	1	± 6.4 %
Linearity	± 4.7 %	Rectangular	$\sqrt{3}$	1	± 2.7 %
Detection Limit	± 2.0 %	Rectangular	$\sqrt{3}$	1	± 1.2 %
Readout Electronics	± 1.0 %	Normal	1	1	± 1.0 %
Mechanical Constrains of Robot	± 0.4 %	Normal	1	1	± 0.4 %
Probe positioning	± 5.0 %	Rectangular	$\sqrt{3}$	1	± 2.9 %
Extrapolation/Integration	± 3.9 %	Rectangular	$\sqrt{3}$	1	± 2.3 %
Dipole/Liquid Distance	± 1.0 %	Rectangular	$\sqrt{3}$	1	± 0.6 %
Dipole Input Power	± 4.7 %		1	1	± 4.7 %
Liquid conductivity (target)	± 5.0 %	Rectangular	$\sqrt{3}$	0.6	± 1.7 %
Liquid conductivity (meas.)	± 10 %	Rectangular	$\sqrt{3}$	0.6	± 3.5 %
Liquid permittivity (target)	± 5.0 %	Rectangular	$\sqrt{3}$	0.6	± 1.7 %
Liquid permittivity (meas.)	± 5.0 %	Rectangular	$\sqrt{3}$	0.6	± 1.7 %
RF Ambient condition	± 3.0 %	Normal	1	1	± 1.7 %
<b>Combined Standard Uncertainty</b>					±12.4 %
<b>Expanded Uncertainty (K=2)</b>					±24.9 %



## 8. INFORMATION ON THE TESTING LABORATORIES

We, ADT Corp., were founded in 1988 to provide our best service in EMC and Safety consultation. Our laboratories are accredited and approved by the following approval agencies according to ISO/IEC 17025, Guide 25 or EN 45001:

<b>USA</b>	FCC, NVLAP
<b>Germany</b>	TUV Rheinland
<b>Japan</b>	VCCI
<b>New Zealand</b>	MoC
<b>Norway</b>	NEMKO
<b>R.O.C.</b>	BSMI, DGT, CNLA

Copies of accreditation certificates of our laboratories obtained from approval agencies can be downloaded from our web site:

[www.adt.com.tw/index.5/phtml](http://www.adt.com.tw/index.5/phtml).

If you have any comments, please feel free to contact us at the following:

**Lin Kou EMC Lab:**

Tel: 886-2-26052180

Fax: 886-2-26052943

**Hsin Chu EMC Lab:**

Tel: 886-35-935343

Fax: 886-35-935342

**Lin Kou Safety Lab:**

Tel: 886-2-26093195

Fax: 886-2-26093184

**Lin Kou RF&Telecom Lab**

Tel: 886-3-3270910

Fax: 886-3-3270892

**Email:** [service@mail.adt.com.tw](mailto:service@mail.adt.com.tw)

**Web Site:** [www.adt.com.tw](http://www.adt.com.tw)

The address and road map of all our labs can be found in our web site also.



## APPENDIX A: TEST CONFIGURATIONS AND TEST DATA

### A1: TEST CONFIGURATION

#### Mode 1



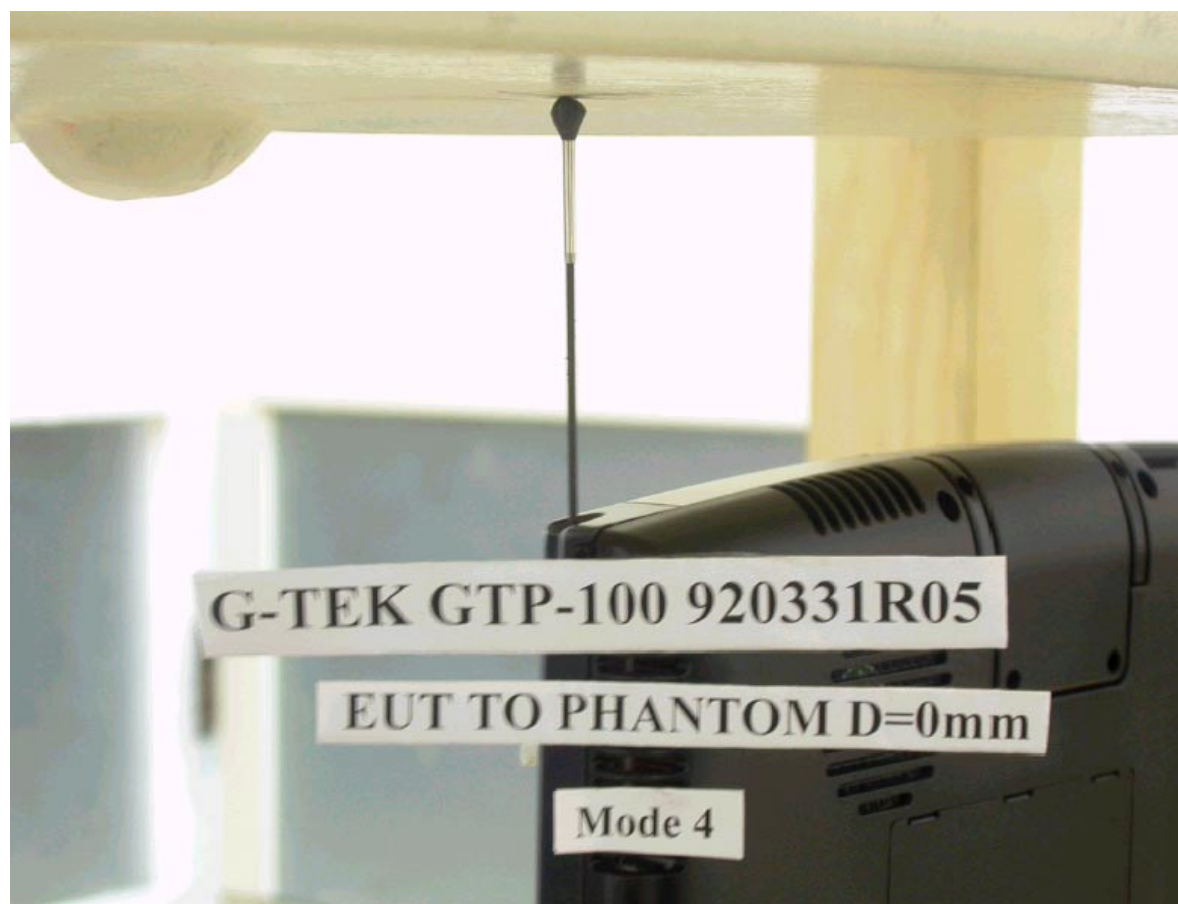
## Mode 2



## Mode 3



## Mode 4



## Mode 5



## Mode 6





## EUT Photo







## A2: TEST DATA

Date/Time: 05/06/03 10:49:18

Test Laboratory: Advance Data Technology Corporation

### GTP-100 Mode 1 channel 01

#### DUT: Tablet PC ; Type: GTP-100

Communication System: 802.11b ; Frequency: 2412 MHz; Duty Cycle: 1:1; Modulation type: DSSS

Medium: MSL2450 ( $\sigma = 1.92$  mho/m,  $\epsilon_r = 52.9$ ,  $\rho = 1000$  kg/m<sup>3</sup>) ; Liquid level : 151mm

Phantom section: Flat Section ; Separation distance : 0mm(The bottom of the Tablet to the Phantom)

Antenna type : Dipole ; Antenna Postiton : Retracted ; Air tempreature : 23.0 degrees ; Liquid temperature : 22.1 degrees

#### DASY4 Configuration:

- Probe: ET3DV6 - SN1687; ConvF(4.4, 4.4, 4.4); Calibrated: 2002/9/28
- Sensor-Surface: 4mm (Mechanical And Optical Surface Detection)
- Electronics: DAE3 Sn510; Calibrated: DAE not calibrated
- Phantom: SAM Twin Phantom V4.0; Type: QD 000 P40 CA; Serial: TP-1150
- Measurement SW: DASY4, V4.1 Build 33; Postprocessing SW: SEMCAD, V1.6 Build 109

**System testing procedure/Area Scan (4x6x1):** Measurement grid: dx=20mm, dy=20mm

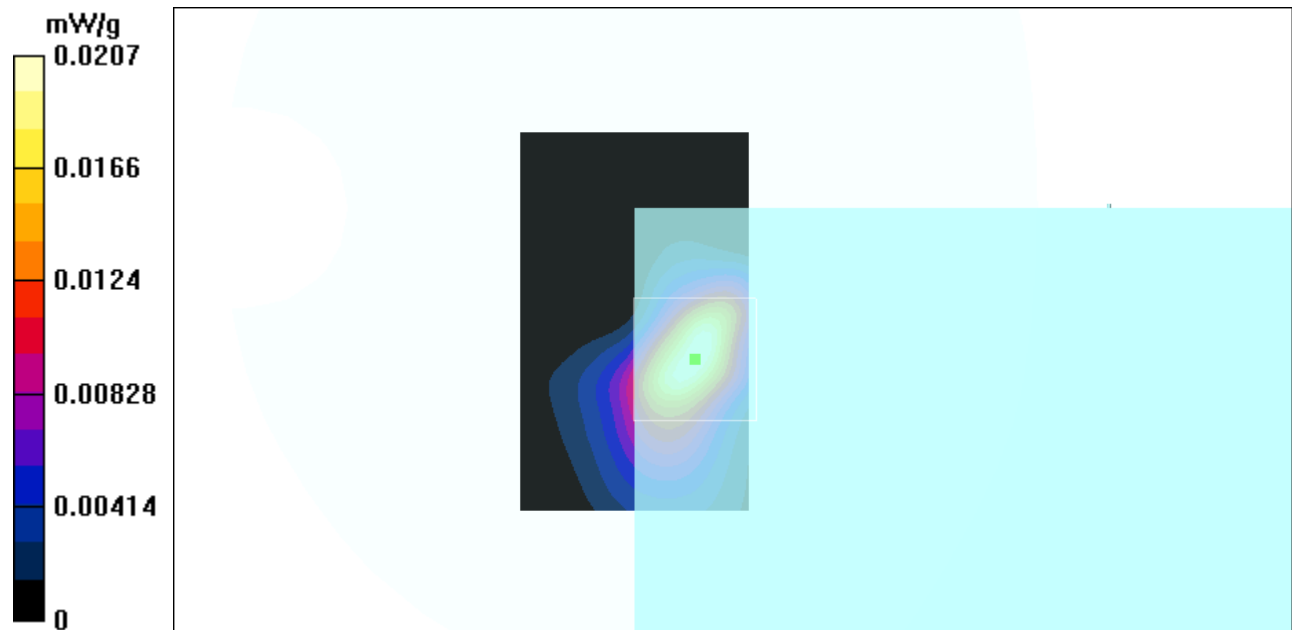
**System testing procedure/Zoon Scan (5x5x7)/Cube 0:** Measurement grid: dx=8mm, dy=8mm, dz=5mm

Reference Value = 0.7 V/m

Peak SAR = 0.585 W/kg

SAR(1 g) = 0.0187 mW/g; SAR(10 g) = 0.00659 mW/g

Power Drift = 0.3 dB



Test Laboratory: Advance Data Technology Corporation

## GTP-100 Mode 1 channel 06

**DUT: Tablet PC ; Type: GTP-100**

Communication System: 802.11b ; Frequency: 2437 MHz; Duty Cycle: 1:1; Modulation type: DSSS

Medium: MSL2450 ( $\sigma = 1.96$  mho/m,  $\epsilon_r = 52.85$ ,  $\rho = 1000$  kg/m<sup>3</sup>) ; Liquid level : 151mm

Phantom section: Flat Section ; Separation distance : 0mm(The bottom of the Tablet to the Phantom)

Antenna type : Dipole ; Antenna Postiton : Retracted ; Air tempreature : 23.0 degrees ; Liquid temperature : 22.1 degrees

DASY4 Configuration:

- Probe: ET3DV6 - SN1687; ConvF(4.4, 4.4, 4.4); Calibrated: 2002/9/28
- Sensor-Surface: 4mm (Mechanical And Optical Surface Detection)
- Electronics: DAE3 Sn510; Calibrated: DAE not calibrated
- Phantom: SAM Twin Phantom V4.0; Type: QD 000 P40 CA; Serial: TP-1150
- Measurement SW: DASY4, V4.1 Build 33; Postprocessing SW: SEMCAD, V1.6 Build 109

**System testing procedure/Area Scan (4x6x1):** Measurement grid: dx=20mm, dy=20mm

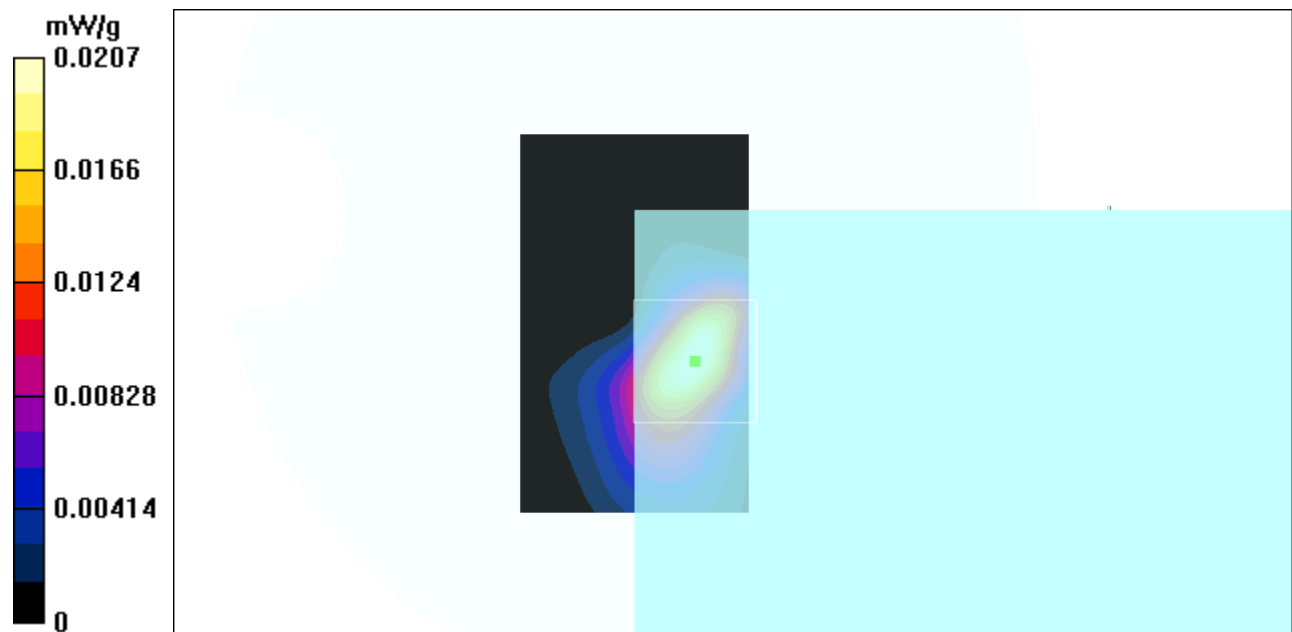
**System testing procedure/Zoon Scan (5x5x7)/Cube 0:** Measurement grid: dx=8mm, dy=8mm, dz=5mm

Reference Value = 0.63 V/m

Peak SAR = 0.562 W/kg

SAR(1 g) = 0.0173 mW/g; SAR(10 g) = 0.0072 mW/g

Power Drift = 0.3 dB



Test Laboratory: Advance Data Technology Corporation

## GTP-100 Mode 1 channel 11

**DUT: Tablet PC ; Type: GTP-100**

Communication System: 802.11b ; Frequency: 2462 MHz; Duty Cycle: 1:1; Modulation type: DSSS

Medium: MSL2450 ( $\sigma = 1.96$  mho/m,  $\epsilon_r = 52.85$ ,  $\rho = 1000$  kg/m<sup>3</sup>) ; Liquid level : 151mm

Phantom section: Flat Section ; Separation distance : 0mm(The bottom of the Tablet to the Phantom)

Antenna type : Dipole ; Antenna Position : Retracted ; Air temperature : 23.0 degrees ; Liquid temperature : 22.1 degrees

DASY4 Configuration:

- Probe: ET3DV6 - SN1687; ConvF(4.4, 4.4, 4.4); Calibrated: 2002/9/28
- Sensor-Surface: 4mm (Mechanical And Optical Surface Detection)
- Electronics: DAE3 Sn510; Calibrated: DAE not calibrated
- Phantom: SAM Twin Phantom V4.0; Type: QD 000 P40 CA; Serial: TP-1150
- Measurement SW: DASY4, V4.1 Build 33; Postprocessing SW: SEMCAD, V1.6 Build 109

**System testing procedure/Area Scan (4x6x1):** Measurement grid: dx=20mm, dy=20mm

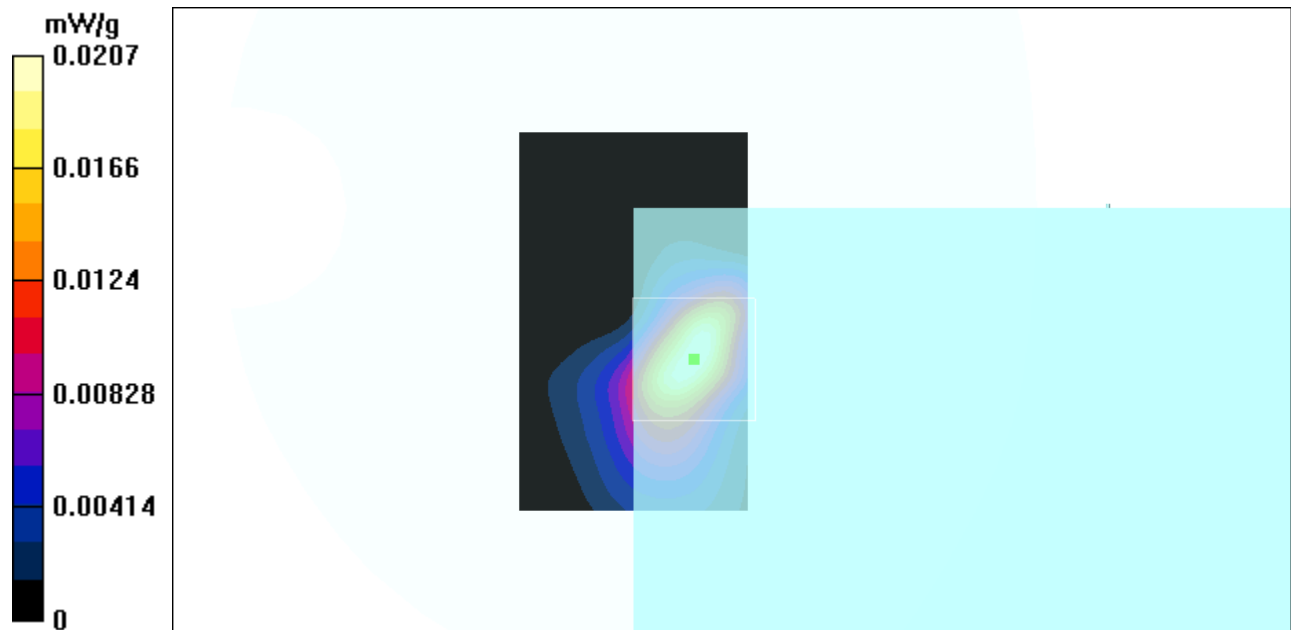
**System testing procedure/Zoon Scan (5x5x7)/Cube 0:** Measurement grid: dx=8mm, dy=8mm, dz=5mm

Reference Value = 0.48 V/m

Peak SAR = 0.518 W/kg

SAR(1 g) = 0.0152 mW/g; SAR(10 g) = 0.0064 mW/g

Power Drift = 0.1 dB



Test Laboratory: Advance Data Technology Corporation

## GTP-100 Mode 2 channel 01

**DUT: Tablet PC ; Type: GTP-100**

Communication System: 802.11b ; Frequency: 2412 MHz; Duty Cycle: 1:1; Modulation type: DSSS  
Medium: MSL2450 ( $\sigma = 1.92$  mho/m,  $\epsilon_r = 52.9$ ,  $\rho = 1000$  kg/m<sup>3</sup>) ; Liquid level : 151mm  
Phantom section: Flat Section ; Separation distance : 15mm(The bottom of the tablet PC to the Phantom)

Antenna type : Dipole ; Antenna position : fully extended ; Air temperature : 23.0 degrees ; Liquid temperature : 22.1 degrees

DASY4 Configuration:

- Probe: ET3DV6 - SN1687; ConvF(4.4, 4.4, 4.4); Calibrated: 2002/9/28
- Sensor-Surface: 4mm (Mechanical And Optical Surface Detection)
- Electronics: DAE3 Sn510; Calibrated: DAE not calibrated
- Phantom: SAM Twin Phantom V4.0; Type: QD 000 P40 CA; Serial: TP-1150
- Measurement SW: DASY4, V4.1 Build 33; Postprocessing SW: SEMCAD, V1.6 Build 109

**System testing procedure/Area Scan (4x6x1):** Measurement grid: dx=20mm, dy=20mm

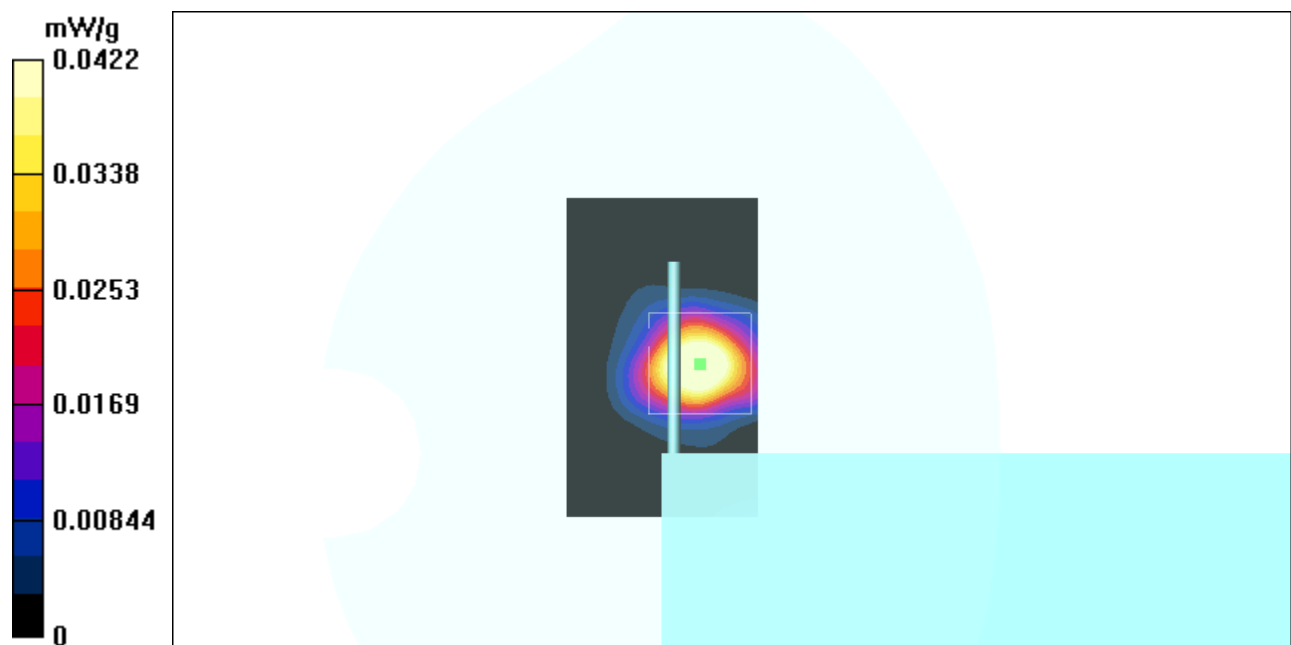
**System testing procedure/Zoon Scan (5x5x7)/Cube 0:** Measurement grid: dx=8mm, dy=8mm, dz=5mm

Reference Value = 1.08 V/m

Peak SAR = 0.0612 W/kg

SAR(1 g) = 0.0397 mW/g; SAR(10 g) = 0.0199 mW/g

Power Drift = -0.2 dB



Test Laboratory: Advance Data Technology Corporation

## GTP-100 Mode 2 channel 06

**DUT: Tablet PC ; Type: GTP-100**

Communication System: 802.11b ; Frequency: 2437 MHz; Duty Cycle: 1:1; Modulation type: DSSS

Medium: MSL2450 ( $\sigma = 1.96$  mho/m,  $\epsilon_r = 52.85$ ,  $\rho = 1000$  kg/m<sup>3</sup>) ; Liquid level : 151mm

Phantom section: Flat Section ; Separation distance : 15mm(The bottom of the tablet PC to the Phantom)

Antenna type : Dipole ; Antenna position : fully extended ; Air temperature : 23.0 degrees ; Liquid temperature : 22.1 degrees

DASY4 Configuration:

- Probe: ET3DV6 - SN1687; ConvF(4.4, 4.4, 4.4); Calibrated: 2002/9/28
- Sensor-Surface: 4mm (Mechanical And Optical Surface Detection)
- Electronics: DAE3 Sn510; Calibrated: DAE not calibrated
- Phantom: SAM Twin Phantom V4.0; Type: QD 000 P40 CA; Serial: TP-1150
- Measurement SW: DASY4, V4.1 Build 33; Postprocessing SW: SEMCAD, V1.6 Build 109

**System testing procedure/Area Scan (4x6x1):** Measurement grid: dx=20mm, dy=20mm

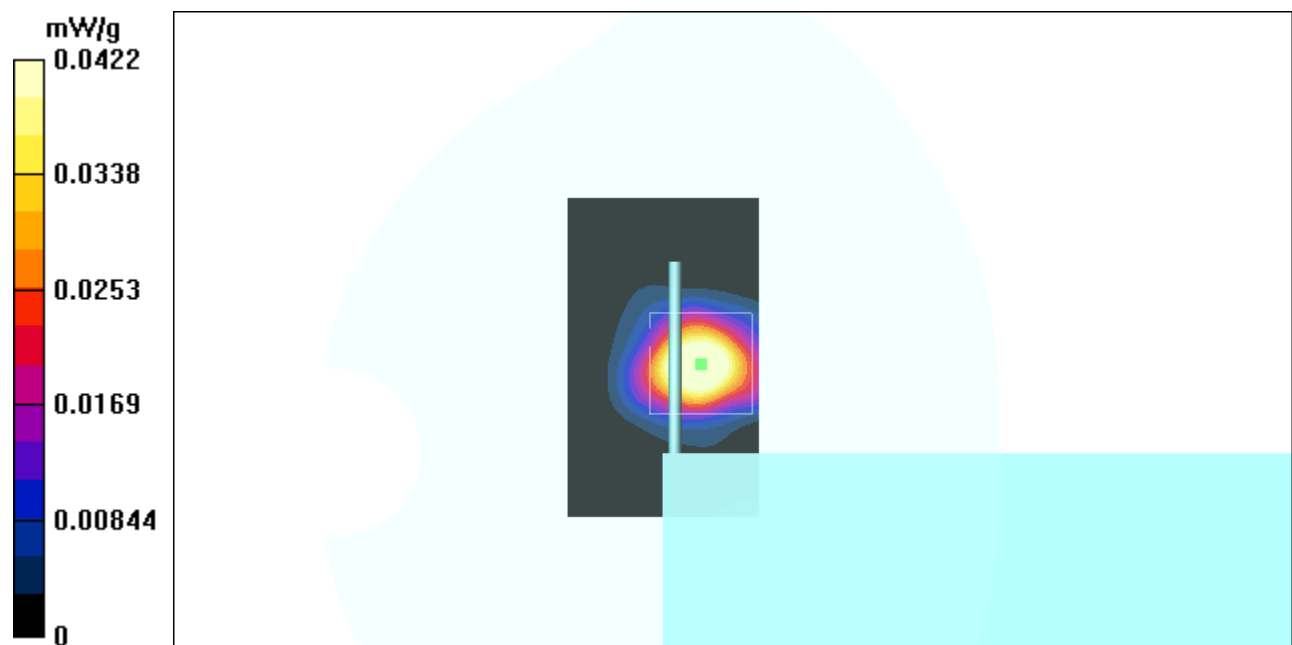
**System testing procedure/Zoon Scan (5x5x7)/Cube 0:** Measurement grid: dx=8mm, dy=8mm, dz=5mm

Reference Value = 0.97 V/m

Peak SAR = 0.0606 W/kg

SAR(1 g) = 0.0377 mW/g; SAR(10 g) = 0.0191 mW/g

Power Drift = -0.32 dB



Test Laboratory: Advance Data Technology Corporation

## GTP-100 Mode 2 channel 11

**DUT: Tablet PC ; Type: GTP-100**

Communication System: 802.11b ; Frequency: 2462 MHz; Duty Cycle: 1:1; Modulation type: DSSS

Medium: MSL2450 ( $\sigma = 2.02$  mho/m,  $\epsilon_r = 52.76$ ,  $\rho = 1000$  kg/m<sup>3</sup>) ; Liquid level : 151mm

Phantom section: Flat Section ; Separation distance : 15mm(The bottom of the tablet PC to the Phantom)

Antenna type : Dipole ; Antenna position : fully extended ; Air temperature : 23.0 degrees ; Liquid temperature : 22.1 degrees

DASY4 Configuration:

- Probe: ET3DV6 - SN1687; ConvF(4.4, 4.4, 4.4); Calibrated: 2002/9/28
- Sensor-Surface: 4mm (Mechanical And Optical Surface Detection)
- Electronics: DAE3 Sn510; Calibrated: DAE not calibrated
- Phantom: SAM Twin Phantom V4.0; Type: QD 000 P40 CA; Serial: TP-1150
- Measurement SW: DASY4, V4.1 Build 33; Postprocessing SW: SEMCAD, V1.6 Build 109

**System testing procedure/Area Scan (4x6x1):** Measurement grid: dx=20mm, dy=20mm

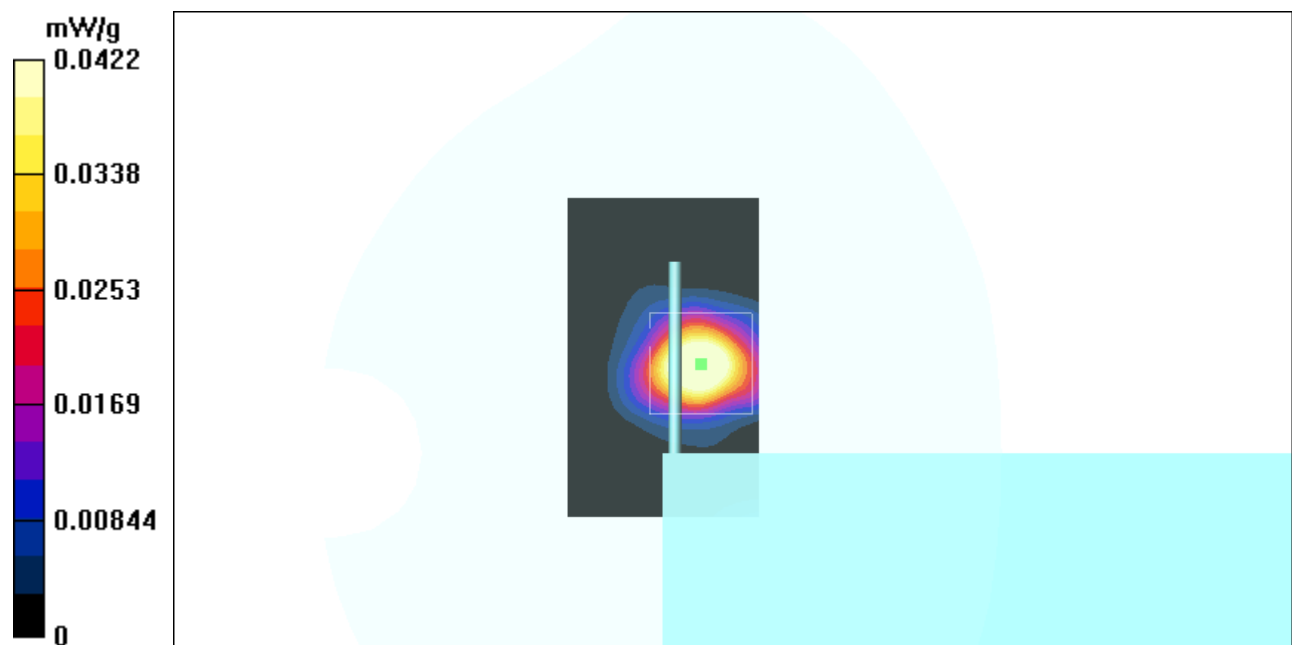
**System testing procedure/Zoon Scan (5x5x7)/Cube 0:** Measurement grid: dx=8mm, dy=8mm, dz=5mm

Reference Value = 0.85 V/m

Peak SAR = 0.0584 W/kg

SAR(1 g) = 0.0345 mW/g; SAR(10 g) = 0.018 mW/g

Power Drift = -0.18 dB



Test Laboratory: Advance Data Technology Corporation

## GTP-100 Mode 3 channel 01

**DUT: Tablet PC ; Type: GTP-100**

Communication System: 802.11b ; Frequency: 2412 MHz; Duty Cycle: 1:1; Modulation type: DSSS

Medium: MSL2450 ( $\sigma = 1.92$  mho/m,  $\epsilon_r = 52.9$ ,  $\rho = 1000$  kg/m<sup>3</sup>) ; Liquid level : 151mm

Phantom section: Flat Section ; Separation distance : 0mm(The tip of the tablet PC to the Phantom)

Antenna type : Dipole ; Antenna position : Retracted ; Air temperature : 23.0 degrees ; Liquid temperature : 22.1 degrees

DASY4 Configuration:

- Probe: ET3DV6 - SN1687; ConvF(4.4, 4.4, 4.4); Calibrated: 2002/9/28
- Sensor-Surface: 4mm (Mechanical And Optical Surface Detection)
- Electronics: DAE3 Sn510; Calibrated: DAE not calibrated
- Phantom: SAM Twin Phantom V4.0; Type: QD 000 P40 CA; Serial: TP-1150
- Measurement SW: DASY4, V4.1 Build 33; Postprocessing SW: SEMCAD, V1.6 Build 109

**System testing procedure/Area Scan (4x4x1):** Measurement grid: dx=20mm, dy=20mm

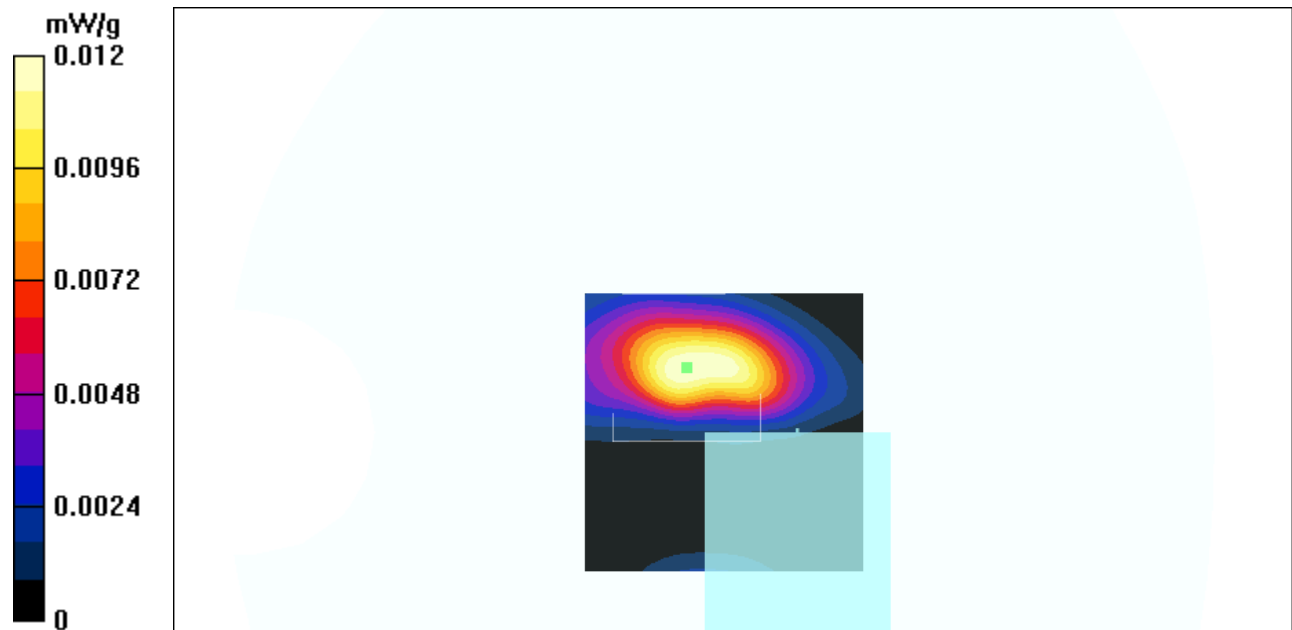
**System testing procedure/Zoon Scan (5x5x7)/Cube 0:** Measurement grid: dx=8mm, dy=8mm, dz=5mm

Reference Value = 2.3 V/m

Peak SAR = 0.115 W/kg

SAR(1 g) = 0.0247 mW/g; SAR(10 g) = 0.0108 mW/g

Power Drift = -0.1 dB



Test Laboratory: Advance Data Technology Corporation

## GTP-100 Mode 3 channel 06

**DUT: Tablet PC ; Type: GTP-100**

Communication System: 802.11b ; Frequency: 2437 MHz; Duty Cycle: 1:1; Modulation type: DSSS

Medium: MSL2450 ( $\sigma = 1.96$  mho/m,  $\epsilon_r = 52.85$ ,  $\rho = 1000$  kg/m<sup>3</sup>) ; Liquid level : 151mm

Phantom section: Flat Section ; Separation distance : 0mm(The tip of the tablet PC to the Phaantom)

Antenna type : Dipole ; Antenna position : Retracted ; Air tempreature : 23.0 degrees ; Liquid temperature : 22.1 degrees

DASY4 Configuration:

- Probe: ET3DV6 - SN1687; ConvF(4.4, 4.4, 4.4); Calibrated: 2002/9/28
- Sensor-Surface: 4mm (Mechanical And Optical Surface Detection)
- Electronics: DAE3 Sn510; Calibrated: DAE not calibrated
- Phantom: SAM Twin Phantom V4.0; Type: QD 000 P40 CA; Serial: TP-1150
- Measurement SW: DASY4, V4.1 Build 33; Postprocessing SW: SEMCAD, V1.6 Build 109

**System testing procedure/Area Scan (4x4x1):** Measurement grid: dx=20mm, dy=20mm

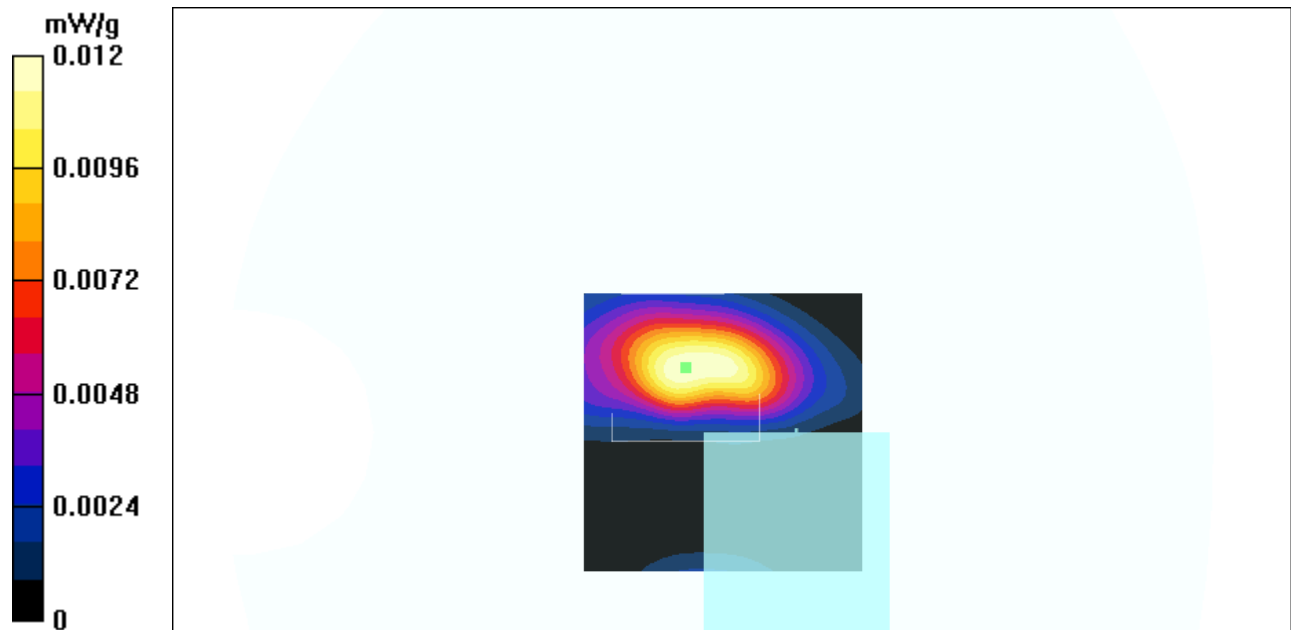
**System testing procedure/Zoon Scan (5x5x7)/Cube 0:** Measurement grid: dx=8mm, dy=8mm, dz=5mm

Reference Value = 2.22 V/m

Peak SAR = 0.106 W/kg

SAR(1 g) = 0.0232 mW/g; SAR(10 g) = 0.0097 mW/g

Power Drift = -0.15 dB





Test Laboratory: Advance Data Technology Corporation

## GTP-100 Mode 3 channel 11

**DUT: Tablet PC ; Type: GTP-100**

Communication System: 802.11b ; Frequency: 2462 MHz; Duty Cycle: 1:1; Modulation type: DSSS

Medium: MSL2450 ( $\sigma = 2.02$  mho/m,  $\epsilon_r = 52.76$ ,  $\rho = 1000$  kg/m<sup>3</sup>) ; Liquid level : 151mm

Phantom section: Flat Section ; Separation distance : 0mm(The tip of the tablet PC to the Phaantom)

Antenna type : Dipole ; Antenna position : Retracted ; Air tempreature : 23.0 degrees ; Liquid temperature : 22.1 degrees

DASY4 Configuration:

- Probe: ET3DV6 - SN1687; ConvF(4.4, 4.4, 4.4); Calibrated: 2002/9/28
- Sensor-Surface: 4mm (Mechanical And Optical Surface Detection)
- Electronics: DAE3 Sn510; Calibrated: DAE not calibrated
- Phantom: SAM Twin Phantom V4.0; Type: QD 000 P40 CA; Serial: TP-1150
- Measurement SW: DASY4, V4.1 Build 33; Postprocessing SW: SEMCAD, V1.6 Build 109

**System testing procedure/Area Scan (4x4x1):** Measurement grid: dx=20mm, dy=20mm

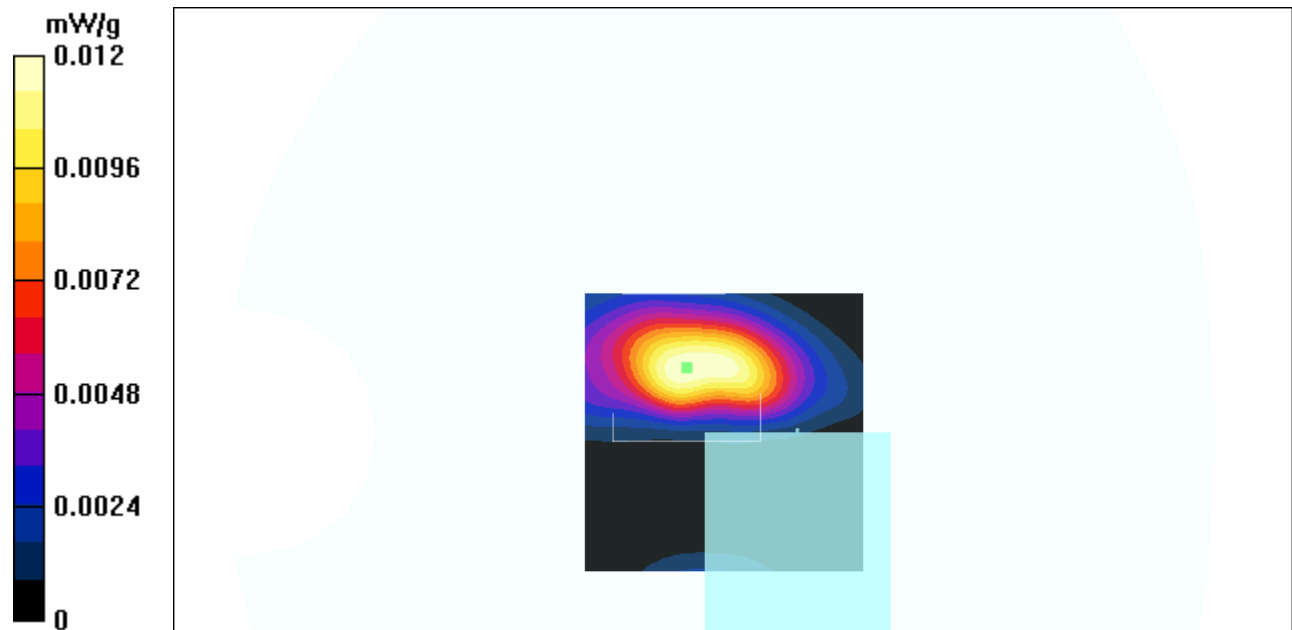
**System testing procedure/Zoon Scan (5x5x7)/Cube 0:** Measurement grid: dx=8mm, dy=8mm, dz=5mm

Reference Value = 2.02 V/m

Peak SAR = 0.104 W/kg

SAR(1 g) = 0.0200 mW/g; SAR(10 g) = 0.089 mW/g

Power Drift = -0.3 dB



Test Laboratory: Advance Data Technology Corporation

## GTP-100 Mode 4 channel 01

**DUT: Tablet PC ; Type: GTP-100**

Communication System: 802.11b ; Frequency: 2412 MHz; Duty Cycle: 1:1; Modulation type: DSSS

Medium: MSL2450 ( $\sigma = 1.92$  mho/m,  $\epsilon_r = 52.9$ ,  $\rho = 1000$  kg/m<sup>3</sup>) ; Liquid level : 151mm

Phantom section: Flat Section ; Separation distance : 0mm(The tip of the tablet PC to the Phaantom)

Antenna type : Dipole ; Antenna position : Fully extended ; Air tempreature : 23.0 degrees ; Liquid temperature : 22.1 degrees

DASY4 Configuration:

- Probe: ET3DV6 - SN1687; ConvF(4.4, 4.4, 4.4); Calibrated: 2002/9/28
- Sensor-Surface: 4mm (Mechanical And Optical Surface Detection)
- Electronics: DAE3 Sn510; Calibrated: DAE not calibrated
- Phantom: SAM Twin Phantom V4.0; Type: QD 000 P40 CA; Serial: TP-1150
- Measurement SW: DASY4, V4.1 Build 33; Postprocessing SW: SEMCAD, V1.6 Build 109

**System testing procedure/Area Scan (4x4x1):** Measurement grid: dx=20mm, dy=20mm

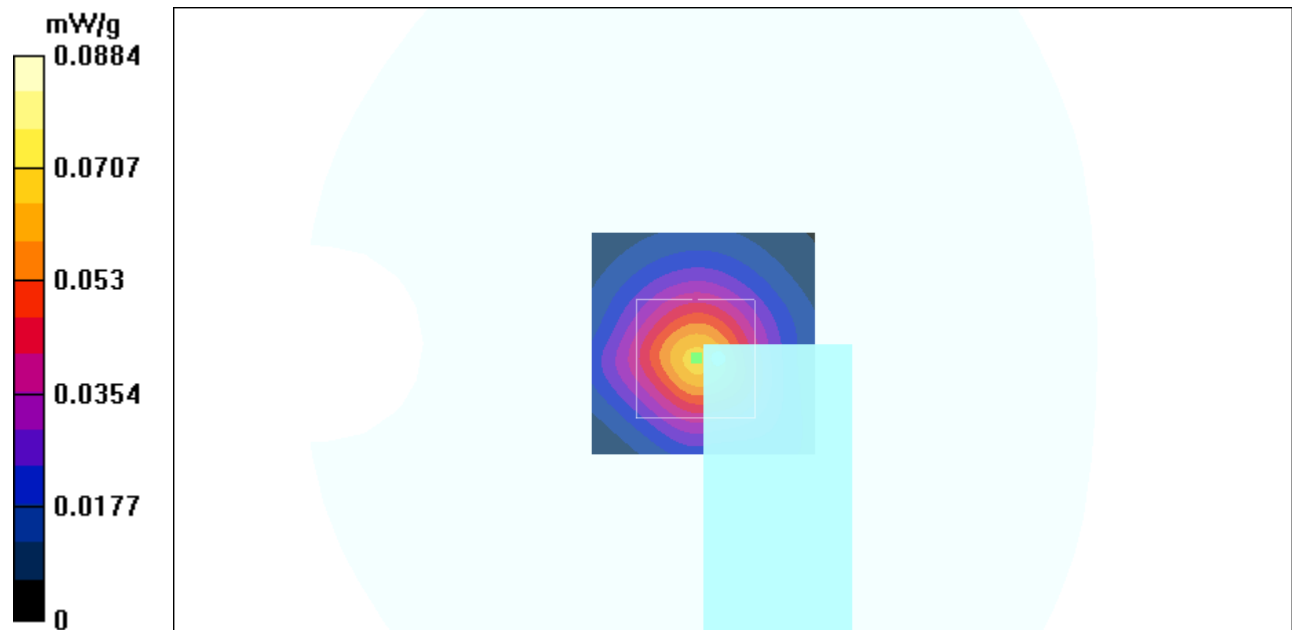
**System testing procedure/Zoon Scan (5x5x7)/Cube 0:** Measurement grid: dx=8mm, dy=8mm, dz=5mm

Reference Value = 6.95 V/m

Peak SAR = 0.17 W/kg

SAR(1 g) = 0.0711 mW/g; SAR(10 g) = 0.0317 mW/g

Power Drift = -0.2 dB



Test Laboratory: Advance Data Technology Corporation

## GTP-100 Mode 4 channel 06

**DUT: Tablet PC ; Type: GTP-100**

Communication System: 802.11b ; Frequency: 2437 MHz; Duty Cycle: 1:1; Modulation type: DSSS

Medium: MSL2450 ( $\sigma = 1.96$  mho/m,  $\epsilon_r = 52.85$ ,  $\rho = 1000$  kg/m<sup>3</sup>) ; Liquid level : 151mm

Phantom section: Flat Section ; Separation distance : 0mm(The tip of the tablet PC to the Phantom)

Antenna type : Dipole ; Antenna position : Fully extended ; Air temperature : 23.0 degrees ; Liquid temperature : 22.1 degrees

DASY4 Configuration:

- Probe: ET3DV6 - SN1687; ConvF(4.4, 4.4, 4.4); Calibrated: 2002/9/28
- Sensor-Surface: 4mm (Mechanical And Optical Surface Detection)
- Electronics: DAE3 Sn510; Calibrated: DAE not calibrated
- Phantom: SAM Twin Phantom V4.0; Type: QD 000 P40 CA; Serial: TP-1150
- Measurement SW: DASY4, V4.1 Build 33; Postprocessing SW: SEMCAD, V1.6 Build 109

**System testing procedure/Area Scan (4x4x1):** Measurement grid: dx=20mm, dy=20mm

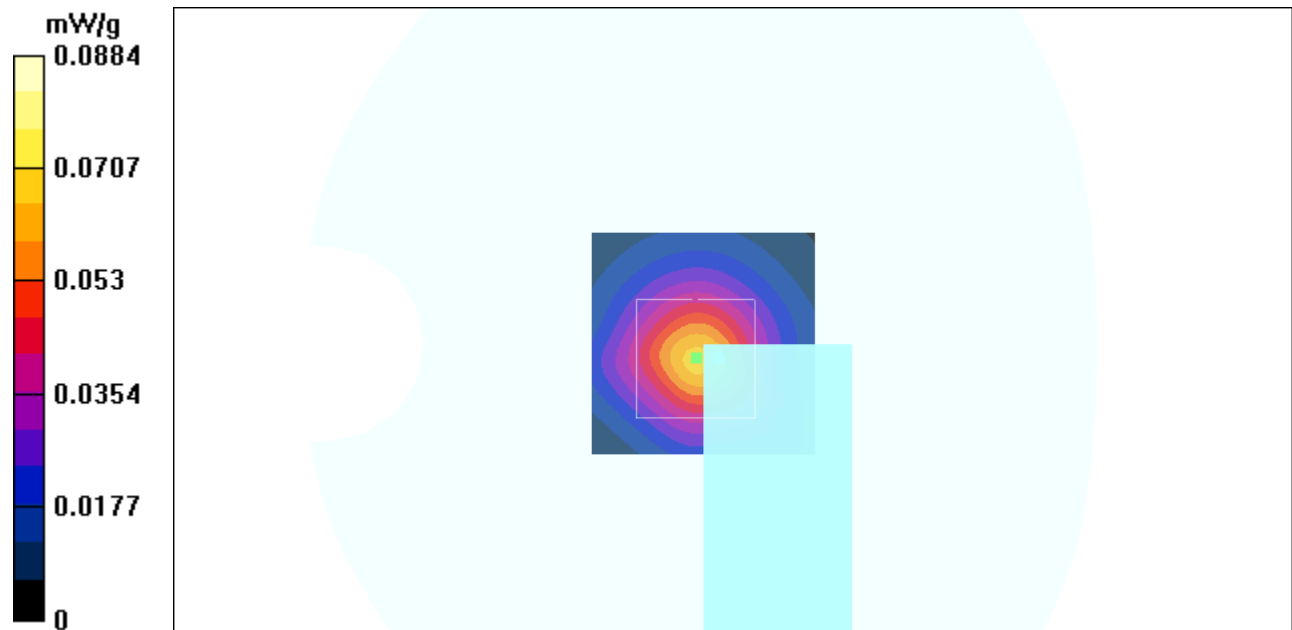
**System testing procedure/Zoon Scan (5x5x7)/Cube 0:** Measurement grid: dx=8mm, dy=8mm, dz=5mm

Reference Value = 6.84 V/m

Peak SAR = 0.162 W/kg

SAR(1 g) = 0.0700 mW/g; SAR(10 g) = 0.0302 mW/g

Power Drift = -0.1 dB



Test Laboratory: Advance Data Technology Corporation

## GTP-100 Mode 4 channel 11

**DUT: Tablet PC ; Type: GTP-100**

Communication System: 802.11b ; Frequency: 2462 MHz; Duty Cycle: 1:1; Modulation type: DSSS

Medium: MSL2450 ( $\sigma = 2.02$  mho/m,  $\epsilon_r = 52.76$ ,  $\rho = 1000$  kg/m<sup>3</sup>) ; Liquid level : 151mm

Phantom section: Flat Section ; Separation distance : 0mm(The tip of the tablet PC to the Phaantom)

Antenna type : Dipole ; Antenna position : Fully extended ; Air tempreature : 23.0 degrees ; Liquid temperature : 22.1 degrees

DASY4 Configuration:

- Probe: ET3DV6 - SN1687; ConvF(4.4, 4.4, 4.4); Calibrated: 2002/9/28
- Sensor-Surface: 4mm (Mechanical And Optical Surface Detection)
- Electronics: DAE3 Sn510; Calibrated: DAE not calibrated
- Phantom: SAM Twin Phantom V4.0; Type: QD 000 P40 CA; Serial: TP-1150
- Measurement SW: DASY4, V4.1 Build 33; Postprocessing SW: SEMCAD, V1.6 Build 109

**System testing procedure/Area Scan (4x4x1):** Measurement grid: dx=20mm, dy=20mm

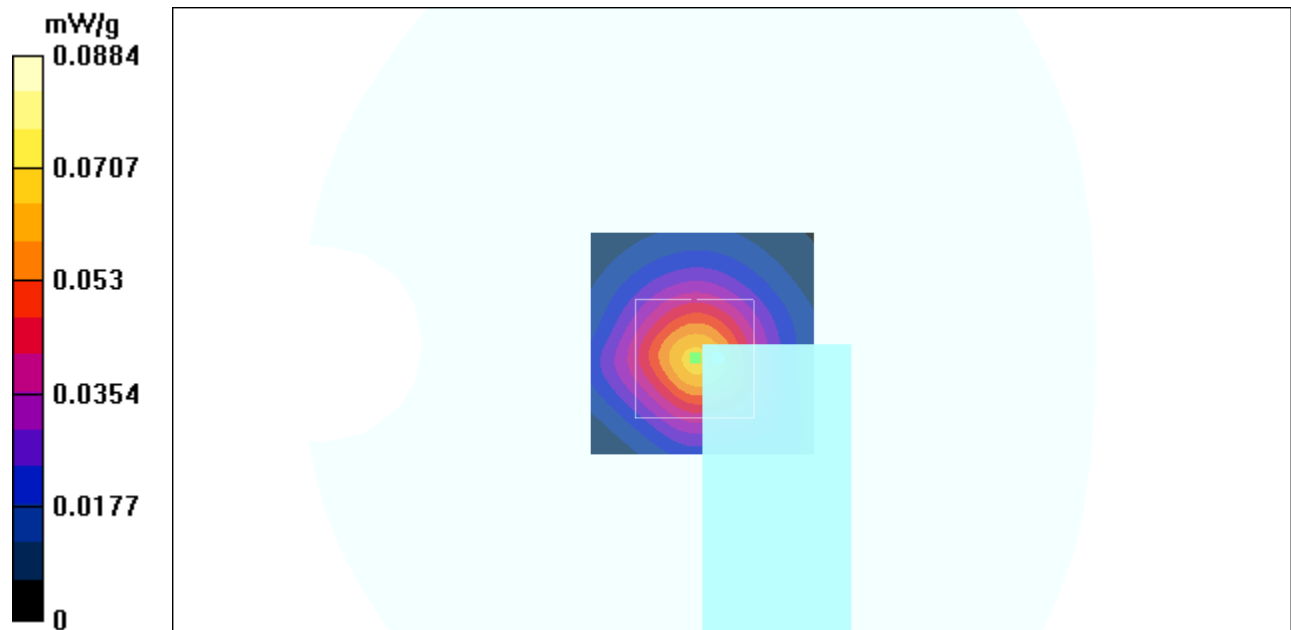
**System testing procedure/Zoon Scan (5x5x7)/Cube 0:** Measurement grid: dx=8mm, dy=8mm, dz=5mm

Reference Value = 6.64 V/m

Peak SAR = 0.15 W/kg

SAR(1 g) = 0.0683 mW/g; SAR(10 g) = 0.0291 mW/g

Power Drift = -0.3 dB



Test Laboratory: Advance Data Technology Corporation

## GTP-100 Mode 5 channel 01

**DUT: Tablet PC ; Type: GTP-100**

Communication System: 802.11b ; Frequency: 2412 MHz; Duty Cycle: 1:1; Modulation type: DSSS

Medium: MSL2450 ( $\sigma = 1.92$  mho/m,  $\epsilon_r = 52.9$ ,  $\rho = 1000$  kg/m<sup>3</sup>) ; Liquid level : 151mm

Phantom section: Flat Section ; Separation distance : 0mm(The right side of the EUT to the Phantom)

Antenna type : Diploe ; Antenna Postiton : Retracted ; Air tempreature : 23.0 degrees ; Liquid temperature : 22.1 degrees

DASY4 Configuration:

- Probe: ET3DV6 - SN1687; ConvF(4.4, 4.4, 4.4); Calibrated: 2002/9/28
- Sensor-Surface: 4mm (Mechanical And Optical Surface Detection)
- Electronics: DAE3 Sn510; Calibrated: DAE not calibrated
- Phantom: SAM Twin Phantom V4.0; Type: QD 000 P40 CA; Serial: TP-1150
- Measurement SW: DASY4, V4.1 Build 33; Postprocessing SW: SEMCAD, V1.6 Build 109

**System testing procedure/Area Scan (4x7x1):** Measurement grid: dx=20mm, dy=20mm

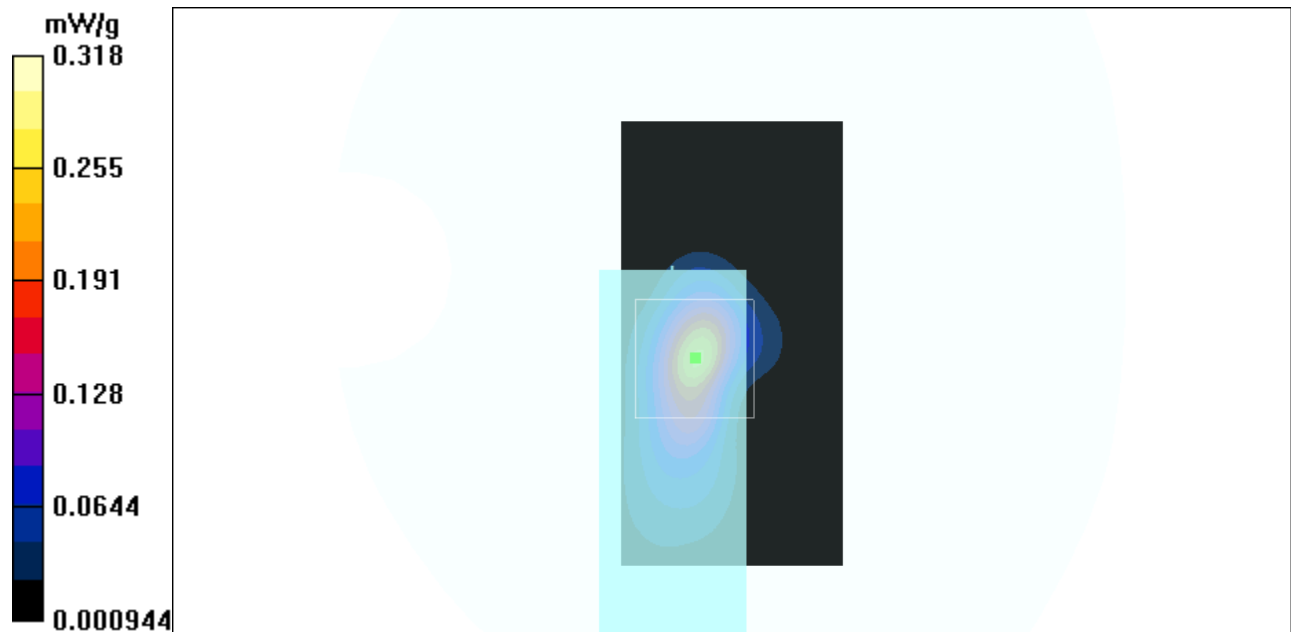
**System testing procedure/Zoon Scan (5x5x7)/Cube 0:** Measurement grid: dx=8mm, dy=8mm, dz=5mm

Reference Value = 6.31 V/m

Peak SAR = 0.492 W/kg

SAR(1 g) = 0.284 mW/g; SAR(10 g) = 0.123 mW/g

Power Drift = 0.09 dB



Test Laboratory: Advance Data Technology Corporation

## GTP-100 Mode 5 channel 06

**DUT: Tablet PC ; Type: GTP-100**

Communication System: 802.11b ; Frequency: 2437 MHz; Duty Cycle: 1:1; Modulation type: DSSS

Medium: MSL2450 ( $\sigma = 1.96$  mho/m,  $\epsilon_r = 52.85$ ,  $\rho = 1000$  kg/m<sup>3</sup>) ; Liquid level : 151mm

Phantom section: Flat Section ; Separation distance : 0mm(The right side of the EUT to the Phantom)

Antenna type : Diploe ; Antenna Postiton : Retracted ; Air tempreature : 23.0 degrees ; Liquid temperature : 22.1 degrees

DASY4 Configuration:

- Probe: ET3DV6 - SN1687; ConvF(4.4, 4.4, 4.4); Calibrated: 2002/9/28
- Sensor-Surface: 4mm (Mechanical And Optical Surface Detection)
- Electronics: DAE3 Sn510; Calibrated: DAE not calibrated
- Phantom: SAM Twin Phantom V4.0; Type: QD 000 P40 CA; Serial: TP-1150
- Measurement SW: DASY4, V4.1 Build 33; Postprocessing SW: SEMCAD, V1.6 Build 109

**System testing procedure/Area Scan (4x7x1):** Measurement grid: dx=20mm, dy=20mm

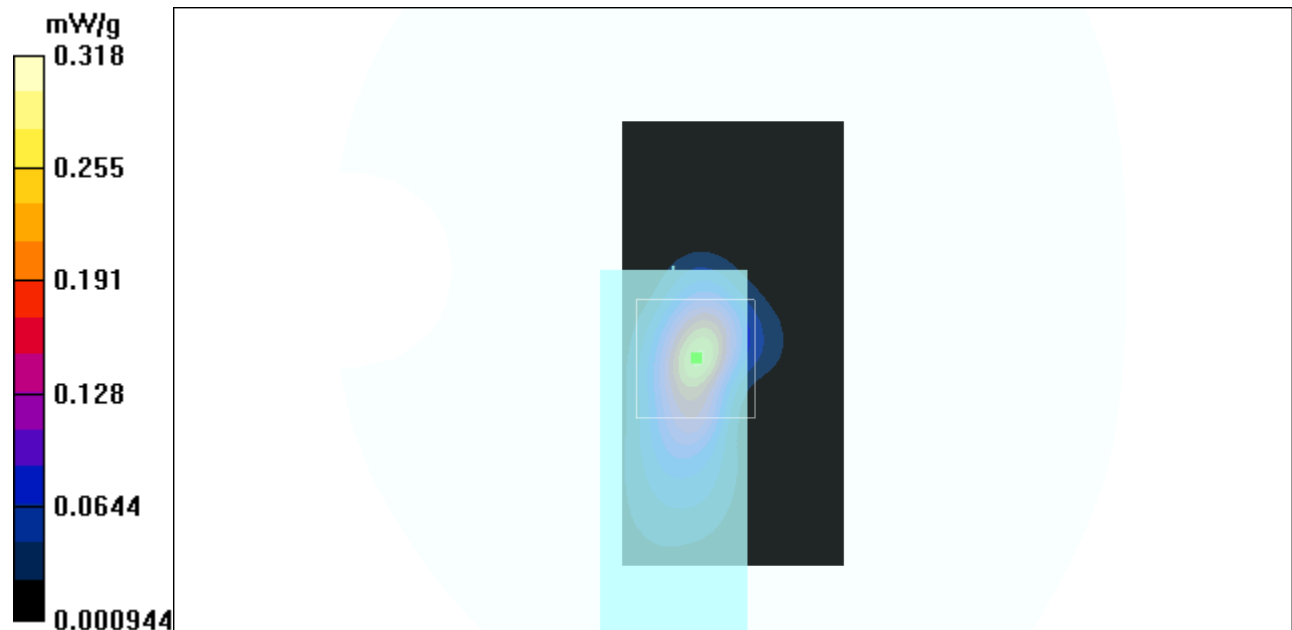
**System testing procedure/Zoon Scan (5x5x7)/Cube 0:** Measurement grid: dx=8mm, dy=8mm, dz=5mm

Reference Value = 6.08 V/m

Peak SAR = 0.476 W/kg

SAR(1 g) = 0.272 mW/g; SAR(10 g) = 0.117 mW/g

Power Drift = 0.16 dB



Test Laboratory: Advance Data Technology Corporation

## GTP-100 Mode 5 channel 11

**DUT: Tablet PC ; Type: GTP-100**

Communication System: 802.11b ; Frequency: 2462 MHz; Duty Cycle: 1:1; Modulation type: DSSS

Medium: MSL2450 ( $\sigma = 2.02$  mho/m,  $\epsilon_r = 52.76$ ,  $\rho = 1000$  kg/m<sup>3</sup>) ; Liquid level : 151mm

Phantom section: Flat Section ; Separation distance : 0mm(The right side of the EUT to the Phantom)

Antenna type : Diploe ; Antenna Postiton : Retracted ; Air tempreature : 23.0 degrees ; Liquid temperature : 22.1 degrees

DASY4 Configuration:

- Probe: ET3DV6 - SN1687; ConvF(4.4, 4.4, 4.4); Calibrated: 2002/9/28
- Sensor-Surface: 4mm (Mechanical And Optical Surface Detection)
- Electronics: DAE3 Sn510; Calibrated: DAE not calibrated
- Phantom: SAM Twin Phantom V4.0; Type: QD 000 P40 CA; Serial: TP-1150
- Measurement SW: DASY4, V4.1 Build 33; Postprocessing SW: SEMCAD, V1.6 Build 109

**System testing procedure/Area Scan (4x7x1):** Measurement grid: dx=20mm, dy=20mm

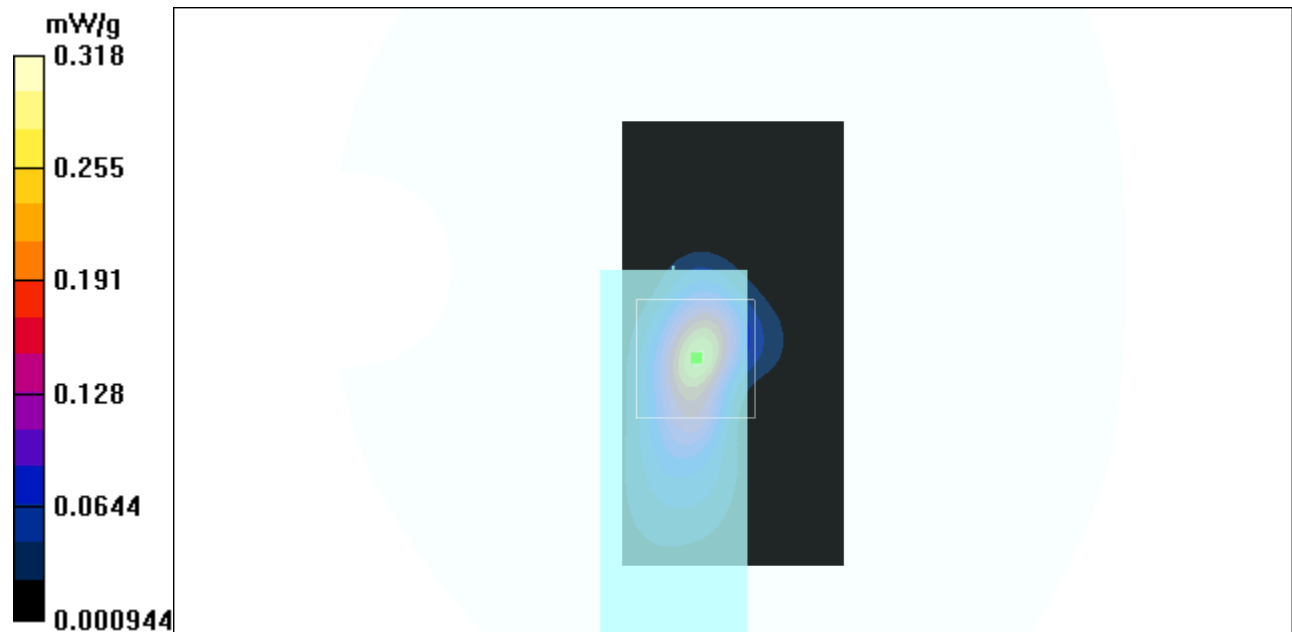
**System testing procedure/Zoon Scan (5x5x7)/Cube 0:** Measurement grid: dx=8mm, dy=8mm, dz=5mm

Reference Value = 5.95 V/m

Peak SAR = 0.462 W/kg

SAR(1 g) = 0.261 mW/g; SAR(10 g) = 0.109 mW/g

Power Drift = 0.11 dB



Test Laboratory: Advance Data Technology Corporation

## GTP-100 Mode 6 channel 01

**DUT: Tablet PC ; Type: GTP-100**

Communication System: 802.11b ; Frequency: 2412 MHz; Duty Cycle: 1:1; Modulation type: DSSS

Medium: MSL2450 ( $\sigma = 1.92$  mho/m,  $\epsilon_r = 52.9$ ,  $\rho = 1000$  kg/m<sup>3</sup>) ; Liquid level : 151mm

Phantom section: Flat Section ; Separation distance : 0mm(The right side of the EUT to the Phantom)

Antenna type : Diploe ; Antenna Postiton : Fully extended ; Air tempreature : 23.0 degrees ; Liquid temperature : 22.1 degrees

DASY4 Configuration:

- Probe: ET3DV6 - SN1687; ConvF(4.4, 4.4, 4.4); Calibrated: 2002/9/28
- Sensor-Surface: 4mm (Mechanical And Optical Surface Detection)
- Electronics: DAE3 Sn510; Calibrated: DAE not calibrated
- Phantom: SAM Twin Phantom V4.0; Type: QD 000 P40 CA; Serial: TP-1150
- Measurement SW: DASY4, V4.1 Build 33; Postprocessing SW: SEMCAD, V1.6 Build 109

**System testing procedure/Area Scan (4x9x1):** Measurement grid: dx=20mm, dy=20mm

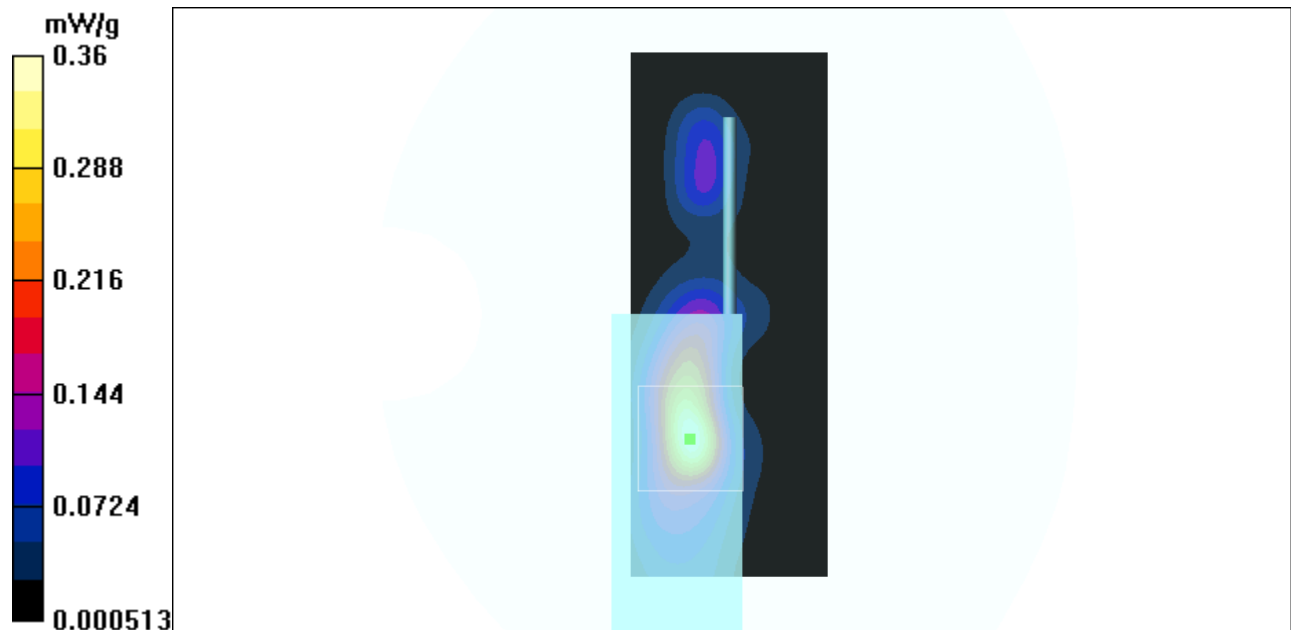
**System testing procedure/Zoon Scan (5x5x7)/Cube 0:** Measurement grid: dx=8mm, dy=8mm, dz=5mm

Reference Value = 10.4 V/m

Peak SAR = 0.628 W/kg

SAR(1 g) = 0.363 mW/g; SAR(10 g) = 0.167 mW/g

Power Drift = -0.2 dB





Test Laboratory: Advance Data Technology Corporation

## GTP-100 Mode 6 channel 06

**DUT: Tablet PC ; Type: GTP-100**

Communication System: 802.11b ; Frequency: 2437 MHz; Duty Cycle: 1:1; Modulation type: DSSS

Medium: MSL2450 ( $\sigma = 1.96$  mho/m,  $\epsilon_r = 52.85$ ,  $\rho = 1000$  kg/m<sup>3</sup>) ; Liquid level : 151mm

Phantom section: Flat Section ; Separation distance : 0mm(The right side of the EUT to the Phantom)

Antenna type : Diploe ; Antenna Postiton : Fully extended ; Air tempreature : 23.0 degrees ; Liquid temperature : 22.1 degrees

DASY4 Configuration:

- Probe: ET3DV6 - SN1687; ConvF(4.4, 4.4, 4.4); Calibrated: 2002/9/28
- Sensor-Surface: 4mm (Mechanical And Optical Surface Detection)
- Electronics: DAE3 Sn510; Calibrated: DAE not calibrated
- Phantom: SAM Twin Phantom V4.0; Type: QD 000 P40 CA; Serial: TP-1150
- Measurement SW: DASY4, V4.1 Build 33; Postprocessing SW: SEMCAD, V1.6 Build 109

**System testing procedure/Area Scan (4x9x1):** Measurement grid: dx=20mm, dy=20mm

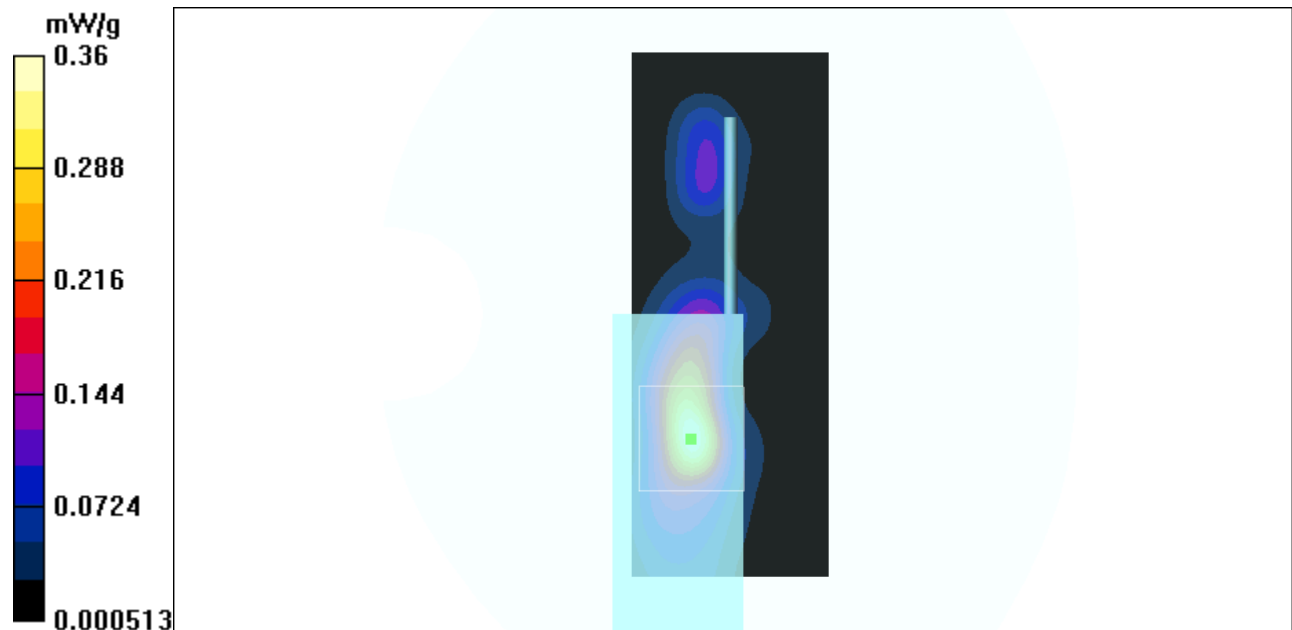
**System testing procedure/Zoon Scan (5x5x7)/Cube 0:** Measurement grid: dx=8mm, dy=8mm, dz=5mm

Reference Value = 10.0 V/m

Peak SAR = 0.616 W/kg

SAR(1 g) = 0.349 mW/g; SAR(10 g) = 0.159 mW/g

Power Drift = -0.1 dB



Test Laboratory: Advance Data Technology Corporation

## GTP-100 Mode 6 channel 11

**DUT: Tablet PC ; Type: GTP-100**

Communication System: 802.11b ; Frequency: 2462 MHz; Duty Cycle: 1:1; Modulation type: DSSS

Medium: MSL2450 ( $\sigma = 2.02$  mho/m,  $\epsilon_r = 52.76$ ,  $\rho = 1000$  kg/m<sup>3</sup>) ; Liquid level : 151mm

Phantom section: Flat Section ; Separation distance : 0mm(The right side of the EUT to the Phantom)

Antenna type : Diploe ; Antenna Postiton : Fully extended ; Air tempreature : 23.0 degrees ; Liquid temperature : 22.1 degrees

DASY4 Configuration:

- Probe: ET3DV6 - SN1687; ConvF(4.4, 4.4, 4.4); Calibrated: 2002/9/28
- Sensor-Surface: 4mm (Mechanical And Optical Surface Detection)
- Electronics: DAE3 Sn510; Calibrated: DAE not calibrated
- Phantom: SAM Twin Phantom V4.0; Type: QD 000 P40 CA; Serial: TP-1150
- Measurement SW: DASY4, V4.1 Build 33; Postprocessing SW: SEMCAD, V1.6 Build 109

**System testing procedure/Area Scan (4x9x1):** Measurement grid: dx=20mm, dy=20mm

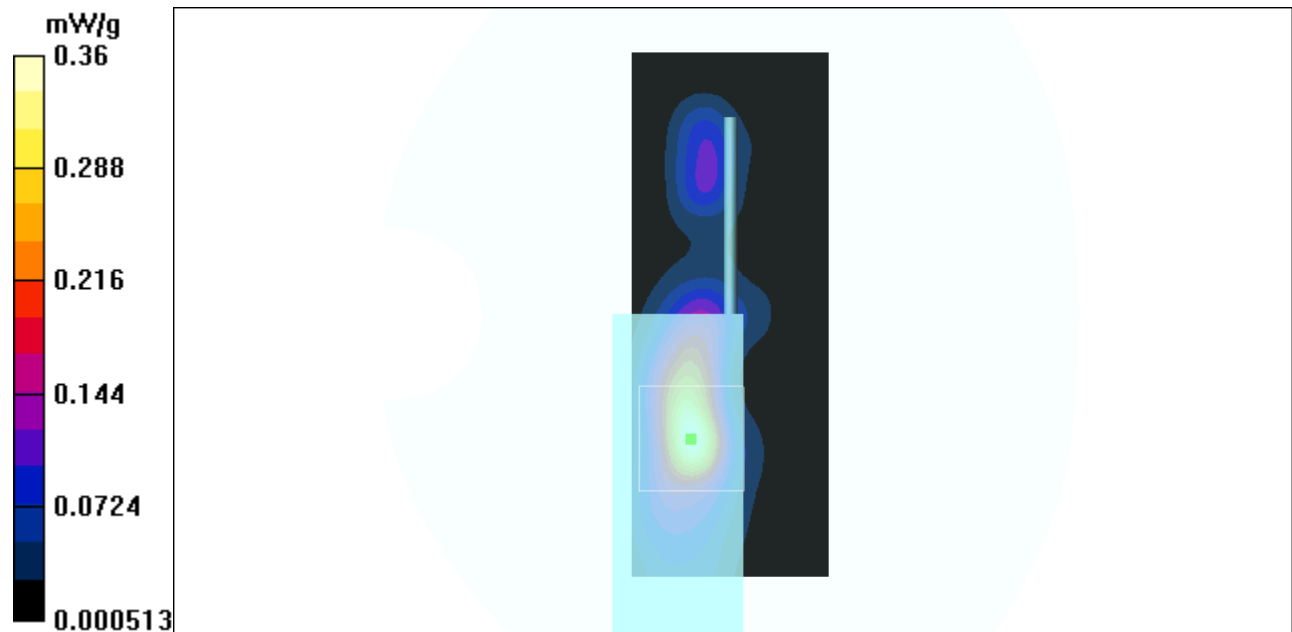
**System testing procedure/Zoon Scan (5x5x7)/Cube 0:** Measurement grid: dx=8mm, dy=8mm, dz=5mm

Reference Value = 9.78 V/m

Peak SAR = 0.607 W/kg

SAR(1 g) = 0.317 mW/g; SAR(10 g) = 0.132 mW/g

Power Drift = -0.16 dB



### A3: VALIDATION TEST DATA

Date/Time: 05/06/03 19:02:20

Test Laboratory: Advance Data Technology Corporation

#### System Validation Check-MSL2450MHz 2003-05-06

**DUT: Dipole 2450 MHz ; Type: D2450V2**

Communication System: CW ; Frequency: 2450 MHz; Duty Cycle: 1:1; Modulation type: CW

Medium: MSL2450 ( $\sigma = 1.99$  mho/m,  $\epsilon_r = 52.81$ ,  $\rho = 1000$  kg/m<sup>3</sup>) ; Liquid level : 151mm

Phantom section: Flat Section ; Separation distance : 10mm(The feetpoint of the dipole to the Phantom)

Air tempreature : 23.0 degrees ; Liquid temperature : 22.1 degrees

DASY4 Configuration:

- Probe: ET3DV6 - SN1687; ConvF(4.4, 4.4, 4.4); Calibrated: 2002/9/28
- Sensor-Surface: 4mm (Mechanical And Optical Surface Detection)
- Electronics: DAE3 Sn510; Calibrated: DAE not calibrated
- Phantom: SAM Twin Phantom V4.0; Type: QD 000 P40 CA; Serial: TP-1150
- Measurement SW: DASY4, V4.1 Build 33; Postprocessing SW: SEMCAD, V1.6 Build 109

**System Validation procedure/Area Scan (5x7x1):** Measurement grid: dx=20mm, dy=20mm

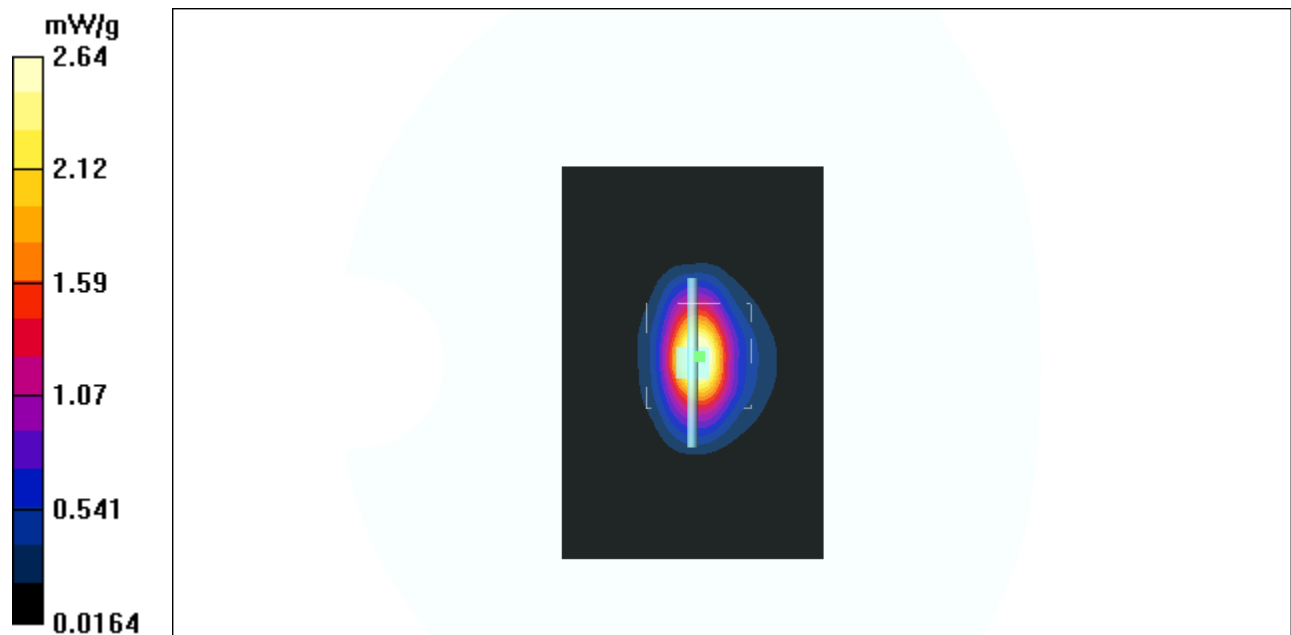
**System Validation procedure/Zoon Scan (5x5x7)/Cube 0:** Measurement grid: dx=8mm, dy=8mm, dz=5mm

Reference Value = 38.6 V/m

Peak SAR = 3.45 W/kg

SAR(1 g) = 2.4 mW/g; SAR(10 g) = 1.18 mW/g

Power Drift = -0.2 dB



Test Laboratory: Advance Data Technology Corporation

## GTP-100 Mode 6 channel 01

**DUT: Tablet PC ; Type: GTP-100**

Communication System: 802.11b ; Frequency: 2412 MHz; Duty Cycle: 1:1; Modulation type: DSSS

Medium: MSL2450 ( $\sigma = 1.92 \text{ mho/m}$ ,  $\epsilon_r = 52.9$ ,  $\rho = 1000 \text{ kg/m}^3$ ) ; Liquid level : 151mm

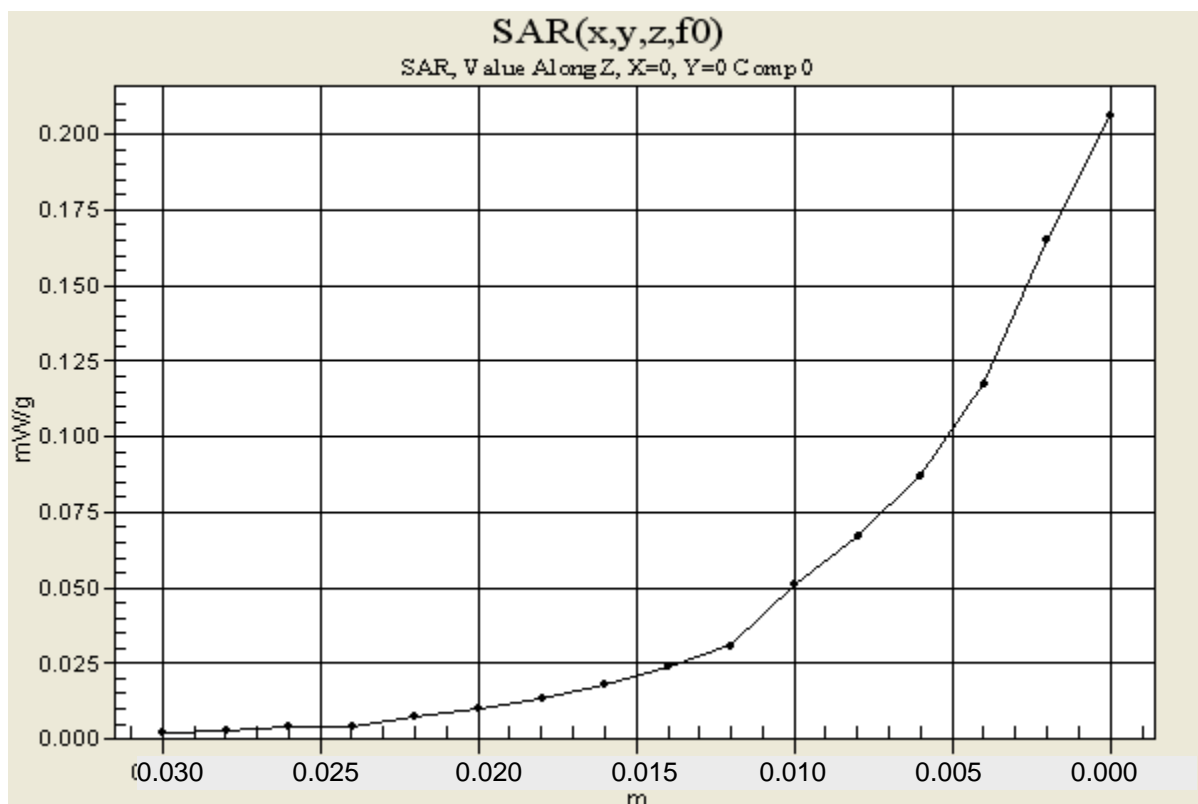
Phantom section: Flat Section ; Separation distance : 0mm(The right side of the EUT to the Phantom)

Antenna type : Dipole ; Antenna Position : Fully Extended ; Air temperature : 23.0 degrees ; Liquid temperature : 22.1 degrees

DASY4 Configuration:

- Probe: ET3DV6 - SN1687; ConvF(4.4, 4.4, 4.4); Calibrated: 2002/9/28
- Sensor-Surface: 0mm (Fix Surface)
- Electronics: DAE3 Sn510; Calibrated: DAE not calibrated
- Phantom: SAM Twin Phantom V4.0; Type: QD 000 P40 CA; Serial: TP-1150
- Measurement SW: DASY4, V4.1 Build 33; Postprocessing SW: SEMCAD, V1.6 Build 109

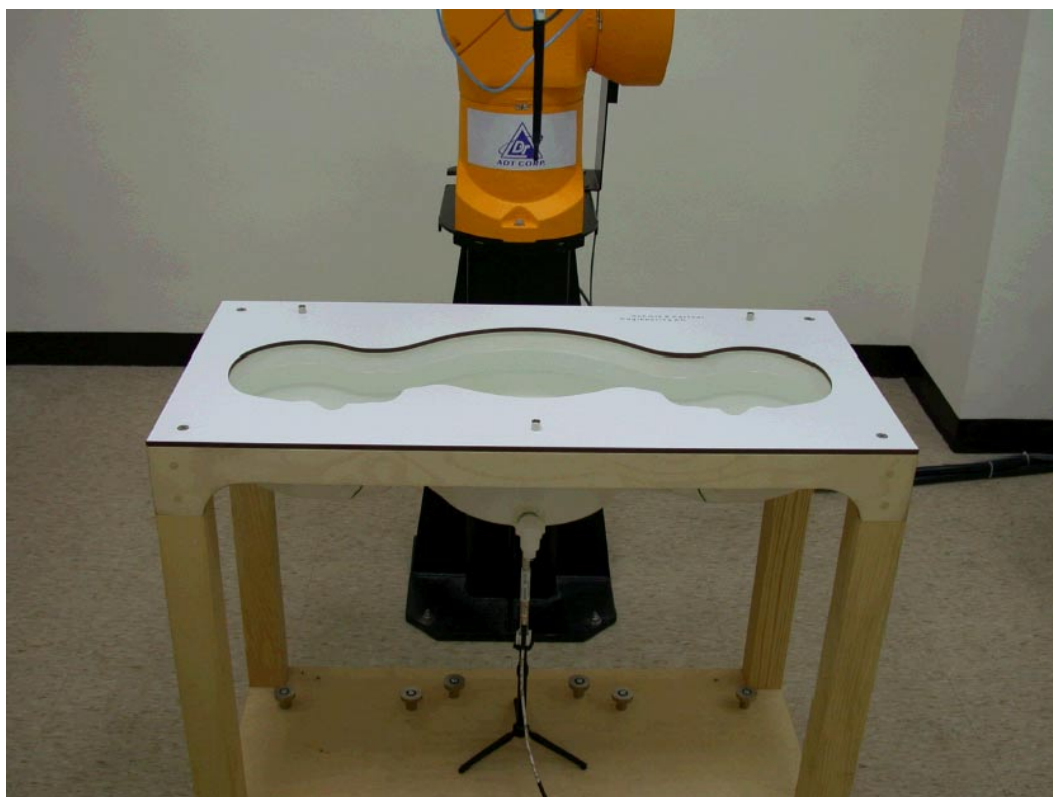
**System testing procedure/Z Scan (1x1x16):** Measurement grid: dx=20mm, dy=20mm, dz=2mm



## APPENDIX B: ADT SAR MEASUREMENT SYSTEM



## APPENDIX C: PHOTOGRAPHS OF SYSTEM VALIDATION



## APPENDIX D: SYSTEM CERTIFICATE & CALIBRATION

### D1: SAM PHANTOM

#### Schmid & Partner Engineering AG

Zeughausstrasse 43, 8004 Zurich, Switzerland, Phone +41 1 245 97 00, Fax +41 1 245 97 79

#### Certificate of conformity / First Article Inspection

Item	SAM Twin Phantom V4.0
Type No	QD 000 P40 CA
Series No	TP-1150 and higher
Manufacturer / Origin	Untersee Composites Hauptstr. 69 CH-8559 Fruthwilen Switzerland

#### Tests

The series production process used allows the limitation to test of first articles. Complete tests were made on the pre-series Type No. QD 000 P40 AA, Serial No. TP-1001 and on the series first article Type No. QD 000 P40 BA, Serial No. TP-1006. Certain parameters have been retested using further series units (called samples).

Test	Requirement	Details	Units tested
Shape	Compliance with the geometry according to the CAD model.	IT'IS CAD File (*)	First article, Samples
Material thickness	Compliant with the requirements according to the standards	2mm +/- 0.2mm in specific areas	First article, Samples
Material parameters	Dielectric parameters for required frequencies	200 MHz – 3 GHz Relative permittivity < 5 Loss tangent < 0.05.	Material sample TP 104-5
Material resistivity	The material has been tested to be compatible with the liquids defined in the standards	Liquid type HSL 1800 and others according to the standard.	Pre-series, First article

#### Standards

- [1] CENELEC EN 50361
- [2] IEEE P1528-200x draft 6.5
- [3] IEC PT 62209 draft 0.9
- (\*) The IT'IS CAD file is derived from [2] and is also within the tolerance requirements of the shapes of [1] and [3].

#### Conformity

Based on the sample tests above, we certify that this item is in compliance with the uncertainty requirements of SAR measurements specified in standard [1] and draft standards [2] and [3].

Date 28.02.2002

Signature / Stamp

*F. Bornhult*

Schmid & Partner  
Engineering AG

Zeughausstrasse 43, CH-8004 Zurich  
Tel. +41 1 245 97 00, Fax +41 1 245 97 79

*Thomas Kofler*



## D2: 2450MHz SYSTEM VALIDATION DIPOLE

### Schmid & Partner Engineering AG

Zeughausstrasse 43, 8004 Zurich, Switzerland, Phone +41 1 245 97 00, Fax +41 1 245 97 79

### Calibration Certificate

#### 2450 MHz System Validation Dipole

Type:

D2450V2

Serial Number:

716

Place of Calibration:

Zurich

Date of Calibration:

September 26, 2002

Calibration Interval:

24 months

Schmid & Partner Engineering AG hereby certifies, that this device has been calibrated on the date indicated above. The calibration was performed in accordance with specifications and procedures of Schmid & Partner Engineering AG.

Wherever applicable, the standards used in the calibration process are traceable to international standards. In all other cases the standards of the Laboratory for EMF and Microwave Electronics at the Swiss Federal Institute of Technology (ETH) in Zurich, Switzerland have been applied.

Calibrated by:

D. Vella

Approved by:

Antonio Kaya



**Schmid & Partner  
Engineering AG**

**Zeughausstrasse 43, 8004 Zurich, Switzerland, Phone +41 1 245 97 00, Fax +41 1 245 97 79**

---

**DASY**

**Dipole Validation Kit**

**Type: D2450V2**

**Serial: 716**

**Manufactured: September 10, 2002**  
**Calibrated: September 26, 2002**

## **1. Measurement Conditions**

The measurements were performed in the flat section of the new SAM twin phantom filled with head simulating solution of the following electrical parameters at 2450 MHz:

Relative permittivity	<b>37.7</b>	$\pm 5\%$
Conductivity	<b>1.88 mho/m</b>	$\pm 10\%$

The DASY System with a dosimetric E-field probe ET3DV6 (SN:1507, conversion factor 5.0 at 2450 MHz) was used for the measurements.

The dipole feedpoint was positioned below the center marking and oriented parallel to the body axis (the long side of the phantom). The standard measuring distance was 10mm from dipole center to the solution surface. The included distance holder was used during measurements for accurate distance positioning.

The coarse grid with a grid spacing of 20mm was aligned with the dipole. The 5x5x7 fine cube was chosen for cube integration. Probe isotropy errors were cancelled by measuring the SAR with normal and 90° turned probe orientations and averaging.

The dipole input power (forward power) was 250mW  $\pm 3\%$ . The results are normalized to 1W input power.

### **2.1. SAR Measurement with DASY3 System**

Standard SAR-measurements were performed according to the measurement conditions described in section 1. The results (see figure supplied) have been normalized to a dipole input power of 1W (forward power). The resulting averaged SAR-values measured with the dosimetric probe ET3DV6 SN:1507 and applying the worst-case extrapolation are:

averaged over 1 cm <sup>3</sup> (1 g) of tissue:	<b>57.2 mW/g</b>
averaged over 10 cm <sup>3</sup> (10 g) of tissue:	<b>26.4 mW/g</b>

### **2.2 SAR Measurement with DASY4 System**

Standard SAR-measurements were performed according to the measurement conditions described in section 1. The results (see figure supplied) have been normalized to a dipole input power of 1W (forward power). The resulting averaged SAR-values measured with the dosimetric probe ET3DV6 SN:1507 and applying the advanced extrapolation are:

averaged over 1 cm <sup>3</sup> (1 g) of tissue:	<b>54.0 mW/g</b>
averaged over 10 cm <sup>3</sup> (10 g) of tissue:	<b>25.2 mW/g</b>

### **3. Dipole impedance and return loss**

The impedance was measured at the SMA-connector with a network analyzer and numerically transformed to the dipole feedpoint. The transformation parameters from the SMA-connector to the dipole feedpoint are:

Electrical delay:	<b>1.148 ns</b>	(one direction)
Transmission factor:	<b>0.982</b>	(voltage transmission, one direction)

The dipole was positioned at the flat phantom sections according to section 1 and the distance holder was in place during impedance measurements.

Feedpoint impedance at 2450 MHz:	$\text{Re}\{Z\} = 54.1 \Omega$
	$\text{Im}\{Z\} = 2.4 \Omega$
Return Loss at 2450 MHz	<b>- 26.8 dB</b>

### **4. Measurement Conditions**

The measurements were performed in the flat section of the new SAM twin phantom filled with body simulating solution of the following electrical parameters at 2450 MHz:

Relative permittivity	<b>52.4</b>	$\pm 5\%$
Conductivity	<b>1.99 mho/m</b>	$\pm 10\%$

The DASY System with a dosimetric E-field probe ET3DV6 (SN:1507, conversion factor 4.5 at 2450 MHz) was used for the measurements.

The dipole feedpoint was positioned below the center marking and oriented parallel to the body axis (the long side of the phantom). The standard measuring distance was 10mm from dipole center to the solution surface. The included distance holder was used during measurements for accurate distance positioning.

The coarse grid with a grid spacing of 20mm was aligned with the dipole. The 5x5x7 fine cube was chosen for cube integration. Probe isotropy errors were cancelled by measuring the SAR with normal and 90° turned probe orientations and averaging.

The dipole input power (forward power) was 250mW  $\pm 3\%$ . The results are normalized to 1W input power.

### **5.1. SAR Measurement with DASY3 System**

Standard SAR-measurements were performed according to the measurement conditions described in section 4. The results (see figure supplied) have been normalized to a dipole input power of 1W (forward power). The resulting averaged SAR-values measured with the dosimetric probe ET3DV6 SN:1507 and applying the worst-case extrapolation are:

averaged over 1 cm <sup>3</sup> (1 g) of tissue:	<b>57.2 mW/g</b>
averaged over 10 cm <sup>3</sup> (10 g) of tissue:	<b>27.0 mW/g</b>

### **5.2 SAR Measurement with DASY4 System**

Standard SAR-measurements were performed according to the measurement conditions described in section 4. The results (see figure supplied) have been normalized to a dipole input power of 1W (forward power). The resulting averaged SAR-values measured with the dosimetric probe ET3DV6 SN:1507 and applying the advanced extrapolation are:

averaged over 1 cm <sup>3</sup> (1 g) of tissue:	<b>51.6 mW/g</b>
averaged over 10 cm <sup>3</sup> (10 g) of tissue:	<b>25.0 mW/g</b>

### **6. Dipole impedance and return loss**

The dipole was positioned at the flat phantom sections according to section 4 (with body tissue inside the phantom) and the distance holder was in place during impedance measurements.

Feedpoint impedance at 2450 MHz:	<b>Re{Z} = 49.6 <math>\Omega</math></b>
	<b>Im {Z} = 4.2 <math>\Omega</math></b>
Return Loss at 2450 MHz	<b>- 27.5 dB</b>

25 Sep 2002 11:22:10

CH1 S11 1 U FS

1: 54.092  $\Omega$  2: 3984  $\Omega$  155.81  $\mu$ H

2 450.000 000 MHz

Del

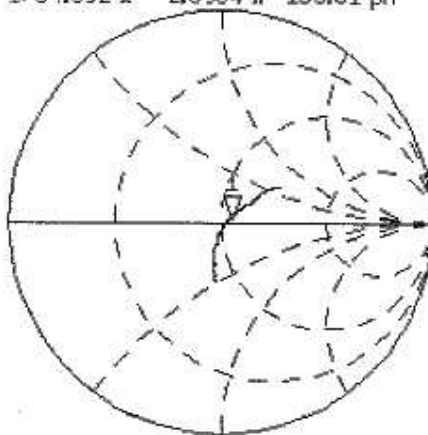
PRm

Cor

Avg

16

↑

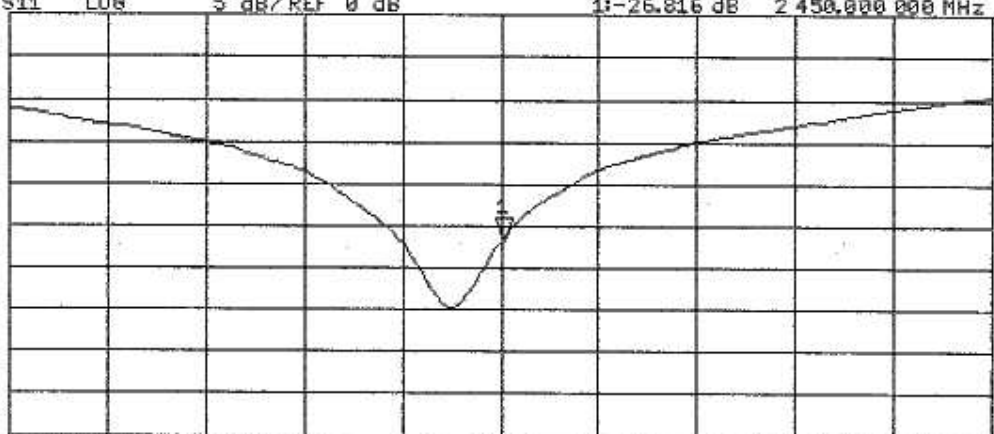


CH2 S11 LOG 5 dB/REF 0 dB 1: -26.816 dB 2 450.000 000 MHz

PRm

Cor

↑



START 2 250.000 000 MHz

STOP 2 650.000 000 MHz



## D3: DOSIMETRIC E-FILED PROBE

### Schmid & Partner Engineering AG

Zeughausstrasse 43, 8004 Zurich, Switzerland, Phone +41 1 245 97 00, Fax +41 1 245 97 79

## Calibration Certificate

### Dosimetric E-Field Probe

Type:

ET3DV6

Serial Number:

1687

Place of Calibration:

Zurich

Date of Calibration:

June 5, 2002

Calibration Interval:

12 months

Schmid & Partner Engineering AG hereby certifies, that this device has been calibrated on the date indicated above. The calibration was performed in accordance with specifications and procedures of Schmid & Partner Engineering AG.

Wherever applicable, the standards used in the calibration process are traceable to international standards. In all other cases the standards of the Laboratory for EMF and Microwave Electronics at the Swiss Federal Institute of Technology (ETH) in Zurich, Switzerland have been applied.

Calibrated by:

D. Vellen

Approved by:

Stefan Kofler

**Probe ET3DV6**

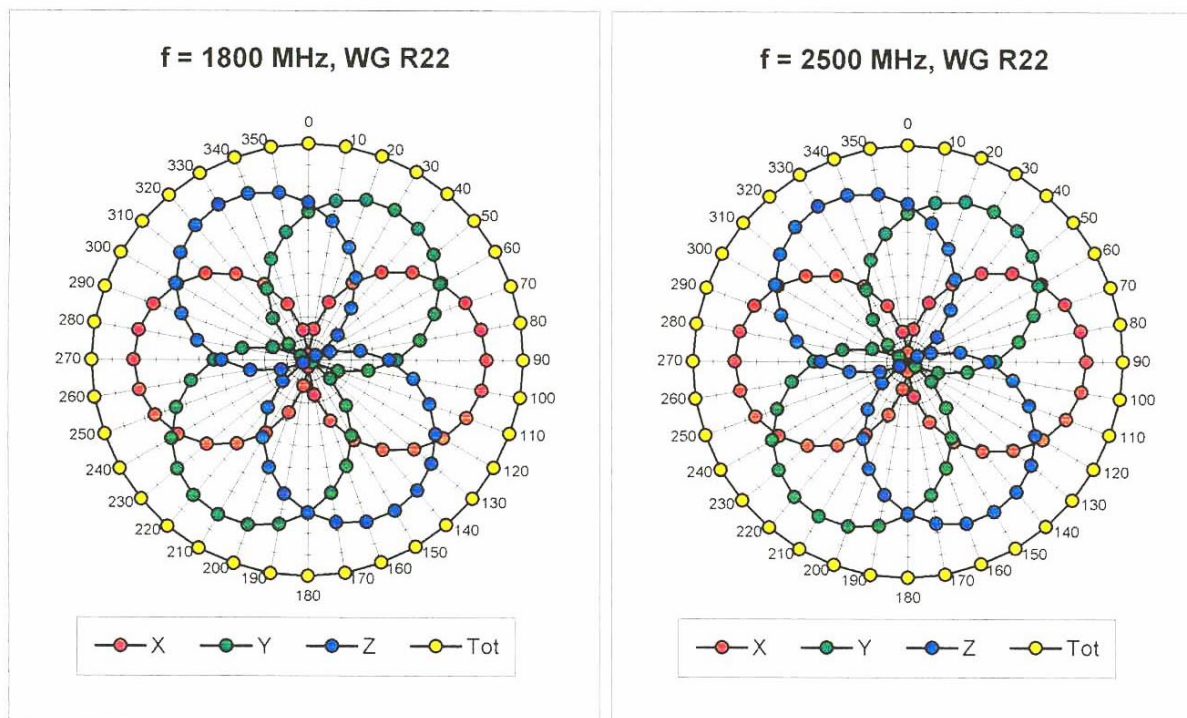
**SN:1687**

Manufactured:	May 28, 2002
Last calibration:	June 5, 2002

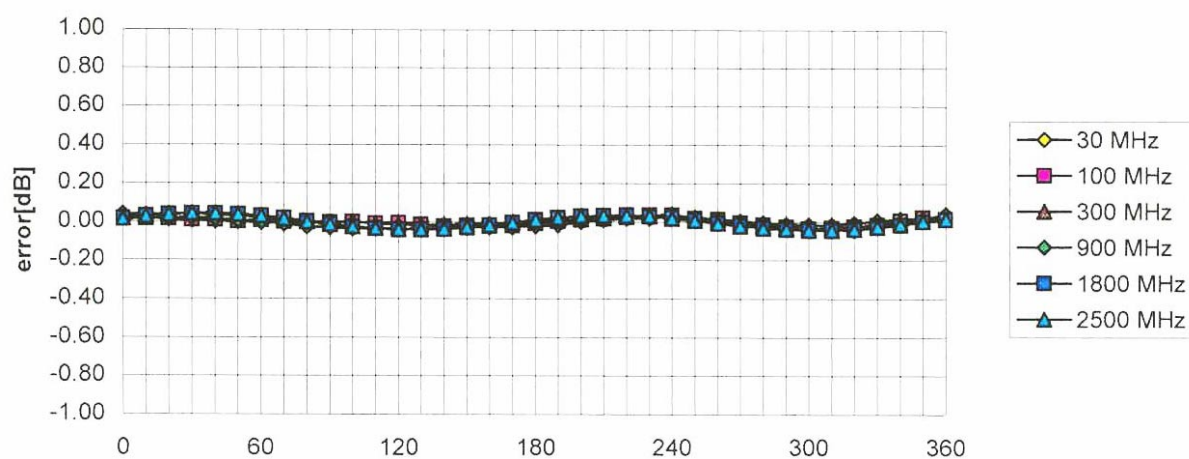
**Calibrated for System DASY3**

ET3DV6 SN:1687

June 5, 2002



### Isotropy Error ( $\Phi$ ), $\theta = 0^\circ$



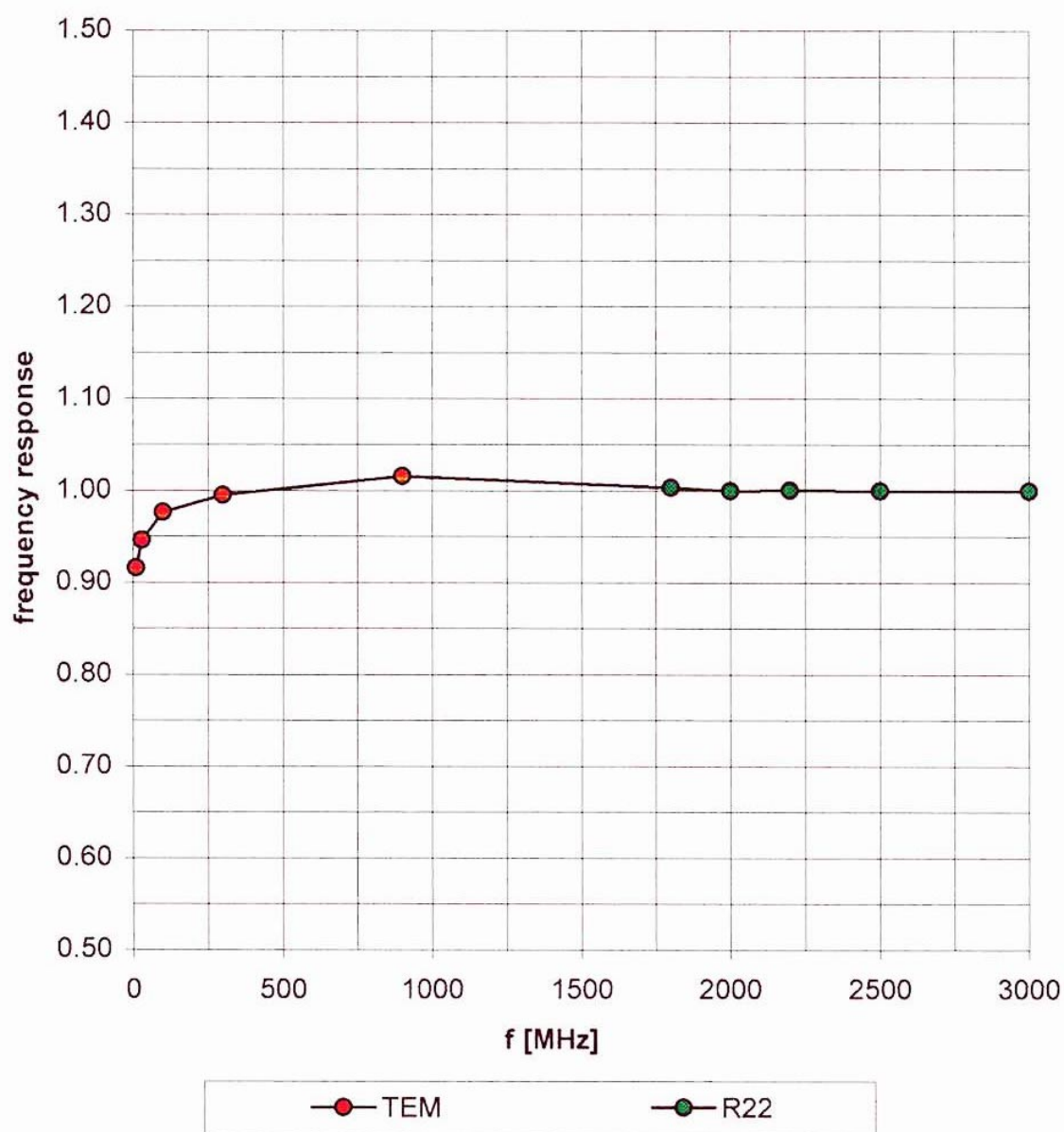


ET3DV6 SN:1687

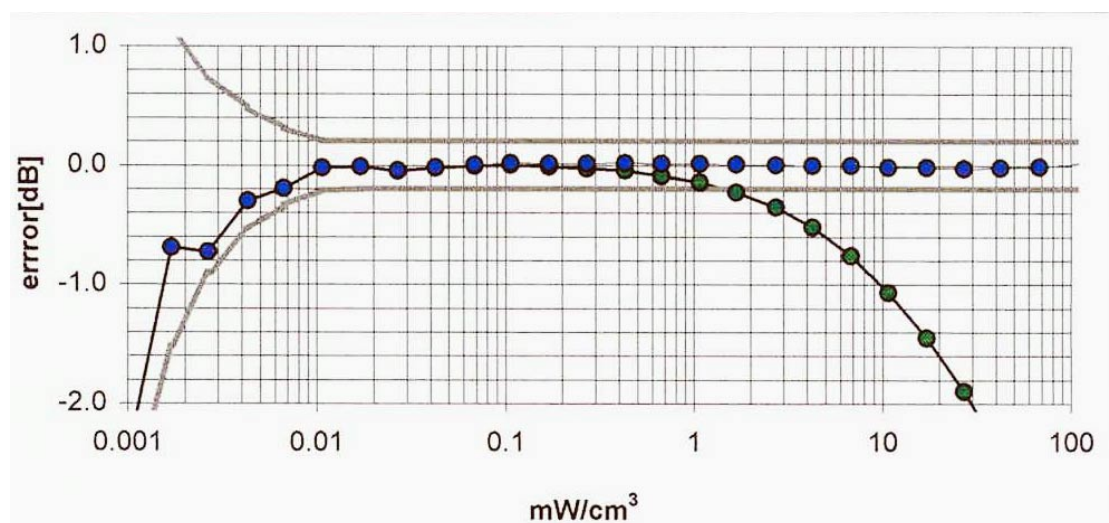
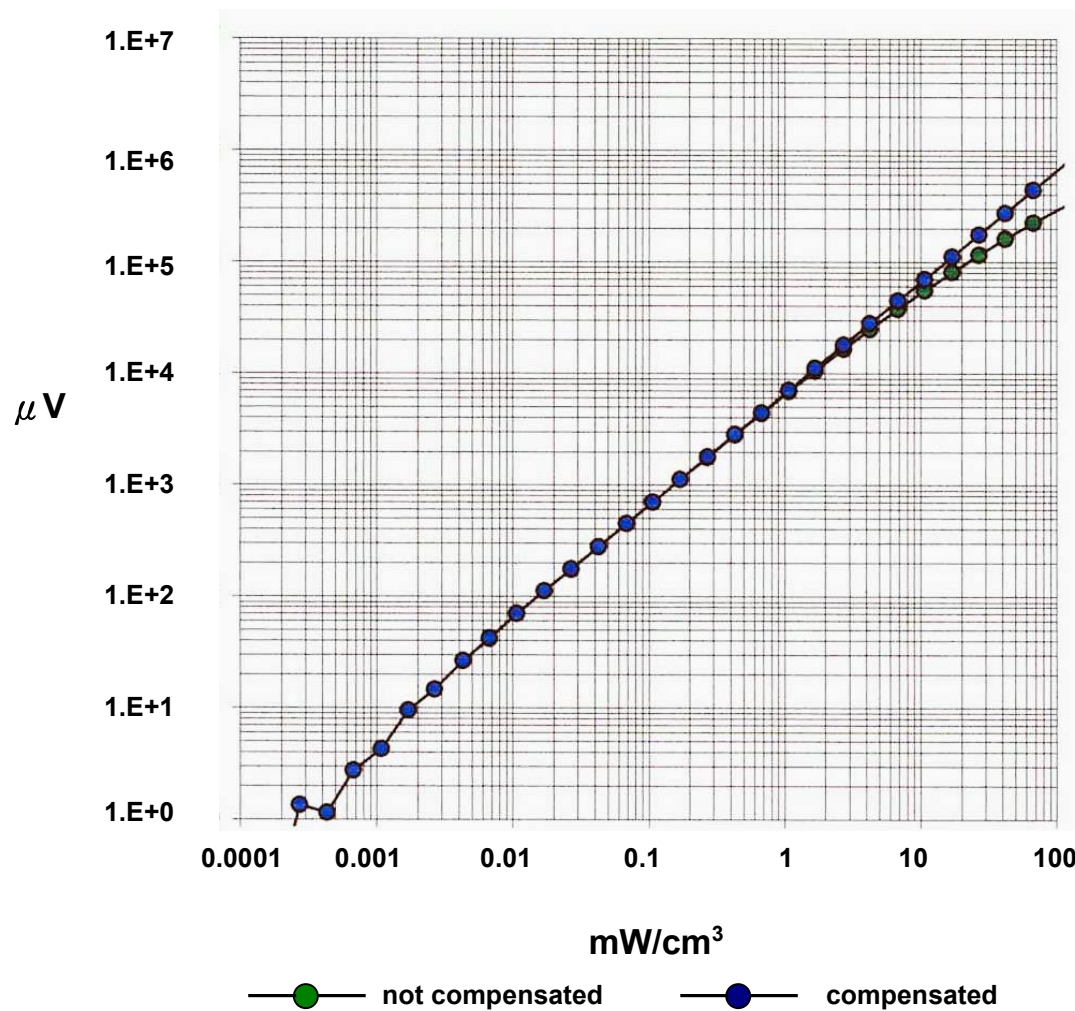
June 5, 2002

## Frequency Response of E-Field

(TEM – Cell:ifi110, Waveguide R22)



# Dynamic Range f (SAR<sub>brain</sub>) (Waveguide R22)



## Calibration Certificate

### Dosimetric E-Field Probe

Type:

**ET3DV6**

Serial Number:

**1687**

Place of Calibration:

**Zurich**

Date of Calibration:

**September 28, 2002**

Calibration Interval:

**12 months**

Schmid & Partner Engineering AG hereby certifies, that this device has been calibrated on the date indicated above. The calibration was performed in accordance with specifications and procedures of Schmid & Partner Engineering AG.

Wherever applicable, the standards used in the calibration process are traceable to international standards. In all other cases the standards of the Laboratory for EMF and Microwave Electronics at the Swiss Federal Institute of Technology (ETH) in Zurich, Switzerland have been applied.

Calibrated by:

*D. Vekken*

Approved by:

*Alvaro Klotz*

**Probe ET3DV6**

**SN:1687**

**Additonal Conversion Factors**

**Calibrated: September 28, 2002**

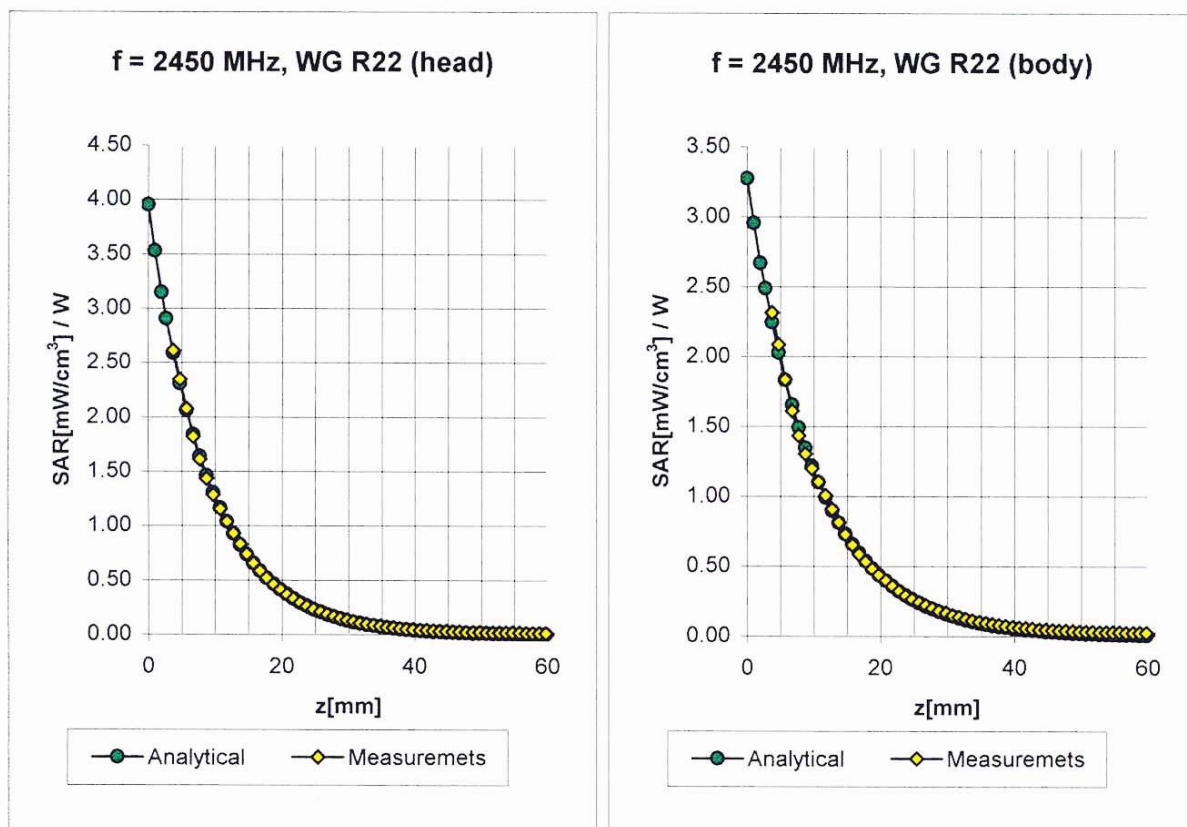
**Calibrated for DASY Systems**

**(Note: non-compatible with DASY2 system!)**

ET3DV6 SN:1687

September 28, 2002

## Conversion Factor Assessment


**Head**
**2450 MHz**
 $\epsilon_r = 39.2 \pm 5\%$ 
 $\sigma = 1.80 \pm 5\% \text{ mho/m}$ 

 ConvF X      **4.9**  $\pm 8.9\%$  (k=2)

Boundary effect:

 ConvF Y      **4.9**  $\pm 8.9\%$  (k=2)

 Alpha      **1.00**

 ConvF Z      **4.9**  $\pm 8.9\%$  (k=2)

 Depth      **1.70**
**Body**
**2450 MHz**
 $\epsilon_r = 52.7 \pm 5\%$ 
 $\sigma = 1.95 \pm 5\% \text{ mho/m}$ 

 ConvF X      **4.4**  $\pm 8.9\%$  (k=2)

Boundary effect:

 ConvF Y      **4.4**  $\pm 8.9\%$  (k=2)

 Alpha      **1.00**

 ConvF Z      **4.4**  $\pm 8.9\%$  (k=2)

 Depth      **1.65**