



品名：WAG-B1.01.L.0806 工規

History List

[illegible]

WAG-B.01.L.0806 Specification

1. Explanation of part number :

WAG - B - 01 - L - 0806
(1) (2) (3) (4) (5)

(1) Product Type : Wireless Antenna

(2) Material : FPC

(3) Frequency : 1575.42Mhz , 2400-2500Mhz

(4) Coaxial Cable Type : 00

(5) Suffix : 047

2. Electrical Specification :

2-1. Frequency Band:

Frequency Band	MHz
GPS,WIFI	1575.42Mhz , 2400-2500Mhz,

2-2. Impedance

50 ohm nominal

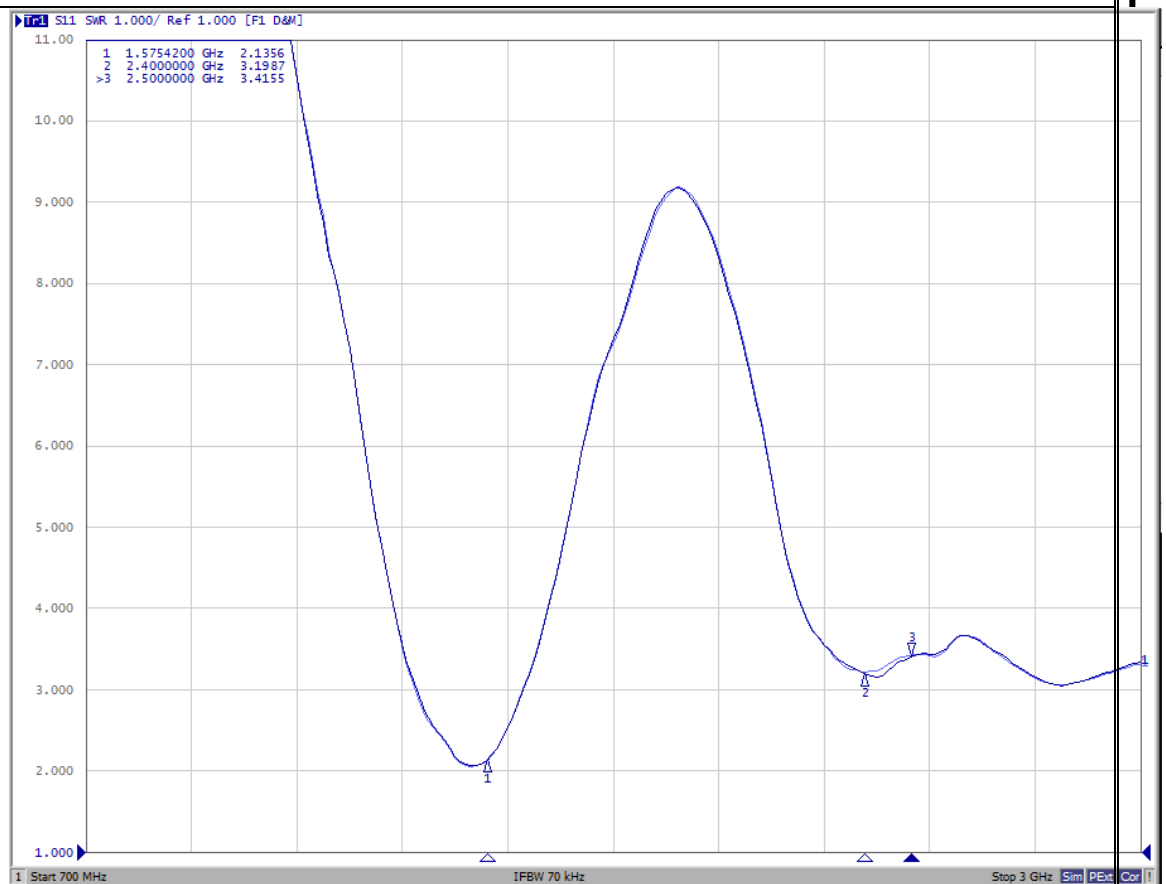
UNLESS OTHER SPECIFIED TOLERANCES ON : X=±2 X.X=±0.1 X.XX=±0.05 ANGLES=± HOLEDIA=±		浙江海通通讯电子股份有限公司	
SCALE :	UNIT : mm	THIS DRAWINGS AND SPECIFICATIONS ARE THE PROPERTY OF INPAQ TECHNOLOGY CO.,LTD.AND SHALL NOT BE REPRODUCED OR USED AS THE BASIS FOR THE MANUFACTURE OR SALE OF APPARATUS OR DEVICES WITHOUT PERMISSION	
DRAWN BY : 程国富	CHECKED BY : 蒋代勇		
DESIGNED BY : 蒋代勇	APPROVED BY : 夏彪		
TITLE : <u>WAG-F-LAG0-00-047</u> Specification		DOCUMENT NO.	PAGE REV. A0

2-3. VSWR ,Efficiency , and Active Data :

2-3.1 VSWR:

Frequency Band	1575.42	2400	2500	
2-3-1. Typical Value:	≤ 2	≤ 4	≤ 4	
2-3-2Measuring Method	1. A 50 Ω coaxial cable is connected to the fpcb antenna. Then this cable is connected to a network analyzer to measure the VSWR. 2. Keeping this jig away from metal at least 20 cm.			

2-3-3Picture



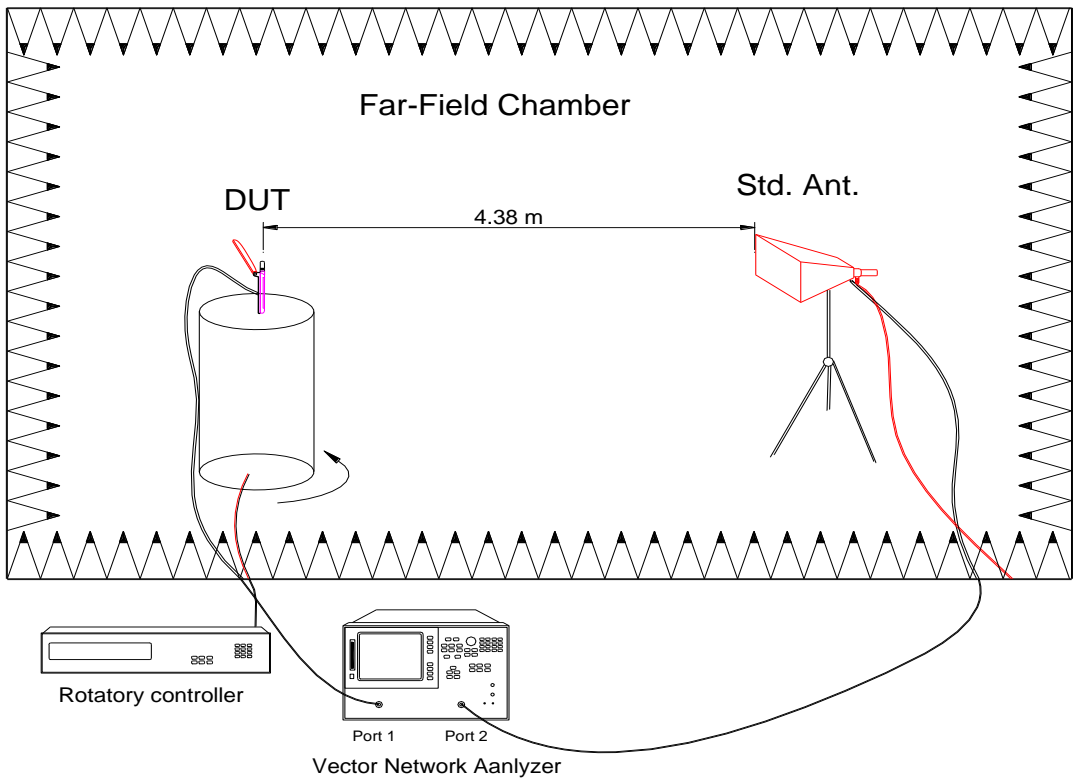
UNLESS OTHER SPECIFIED TOLERANCES ON : X=±2 X.X=±0.1 X.XX=±0.05 ANGLES=± HOLEDIA=±		浙江海通通讯电子股份有限公司	
SCALE :	UNIT : mm	THIS DRAWINGS AND SPECIFICATIONS ARE THE PROPERTY OF INPAQ TECHNOLOGY CO.,LTD.AND SHALL NOT BE REPRODUCED OR USED AS THE BASIS FOR THE MANUFACTURE OR SALE OF APPARATUS OR DEVICES WITHOUT PERMISSION	
DRAWN BY : 程国富	CHECKED BY : 蒋代勇		
DESIGNED BY : 蒋代勇	APPROVED BY : 夏彪		
TITLE : <u>WAG-F-LAG0-00-047</u> Specification		DOCUMENT NO.	PAGE REV. A0

2-4. Measure and Chamber

2-4-1 Measure method

1. Using a low loss coaxial cable to link a standard handset jig
2. Fixed this handset jig on chamber's rotator plane
3. Linking jig into network analyzer port and using a probing horn antenna to collect data.
4. Using another standard gain horn antenna to calibrated those data

2-4-2 Chamber definition



1. An anechoic chamber (8mx4mx3.5m) which satisfied far-field condition was applied to avoid multi-path effect
2. The quite room region is 40cmx40cmx40cm at the center of rotator
3. The distance between DUT and standard antenna is 4.38 m
4. Probing antenna (9120D horn antenna) and standard gain horn antenna (BBHA9120 LPF 700MHz ~6GHz)

UNLESS OTHER SPECIFIED TOLERANCES ON :

X=±2 X.X=±0.1 X.XX=±0.05

ANGLES=± HOLEDIA=±

SCALE :

UNIT : mm

DRAWN BY : 程国富

CHECKED BY : 蒋代勇

DESIGNED BY : 蒋代勇

APPROVED BY : 夏彪

TITLE : **WAG-F-LAG0-00-047 Specification**

DOCUMENT
NO.

PAGE REV.
A0

浙江海通通讯电子股份有限公司

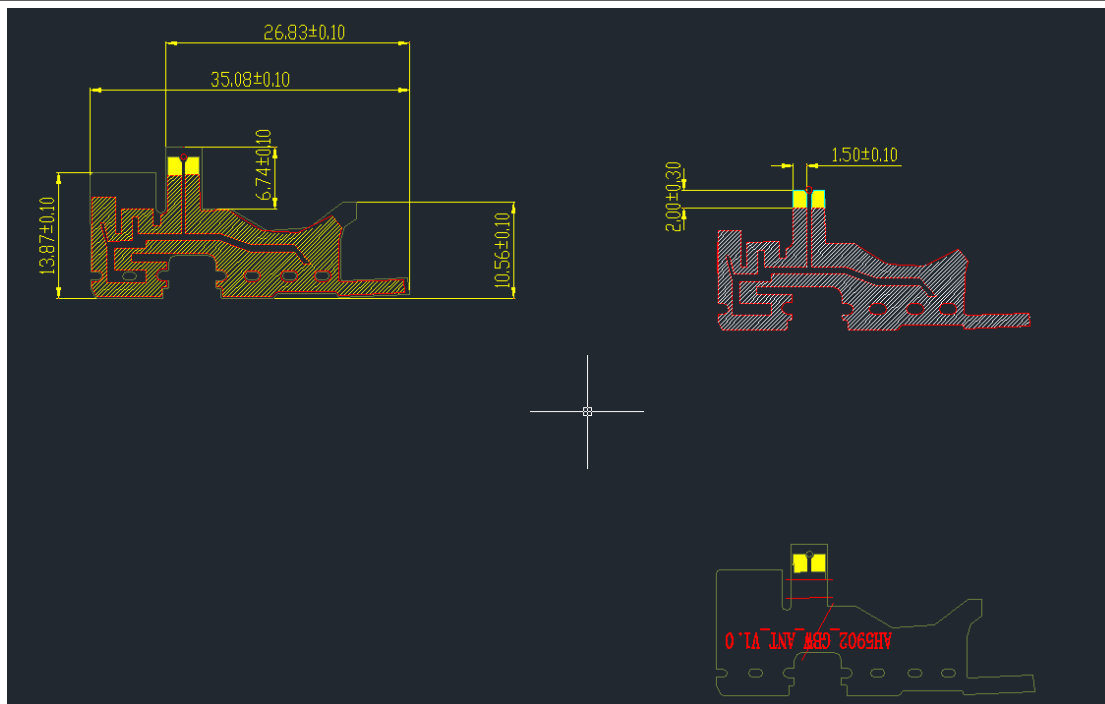
THIS DRAWINGS AND SPECIFICATIONS ARE THE PROPERTY OF INPAQ TECHNOLOGY CO.,LTD.AND SHALL NOT BE REPRODUCED OR USED AS THE BASIS FOR THE MANUFACTURE OR SALE OF APPARATUS OR DEVICES WITHOUT PERMISSION

2-4-3 Antenna Efficiency

Frequency (MHz)	Peak Gain(dB)	Average Gain(dB)	Efficiency (%)
1570	0.51	-5.01	31.52
1571	0.52	-5.03	31.44
1572	0.54	-5.03	31.38
1573	0.57	-5.04	31.37
1574	0.6	-5.03	31.42
1575	0.64	-5.02	31.51
1575.42	0.66	-5.03	31.52
1576	0.67	-5	31.59
1577	0.72	-4.99	31.67
1578	0.75	-4.99	31.72
1579	0.78	-4.98	31.75
1580	0.8	-4.98	31.74
2400	-5.58	-0.67	27.67
2410	-5.52	-0.44	28.06
2420	-5.73	-0.53	26.72
2430	-5.78	-0.53	26.45
2440	-5.67	-0.39	27.12
2450	-5.64	-0.19	27.3
2460	-5.63	-0.11	27.34
2470	-5.86	-0.29	25.94
2480	-6.03	-0.46	24.97
2490	-6.03	-0.47	24.97
2500	-6.35	-0.64	23.16

3. Antenna Dimensions:

UNLESS OTHER SPECIFIED TOLERANCES ON : X=±2 X.X=±0.1 X.XX=±0.05 ANGLES=± HOLEDIA=±		浙江海通通讯电子股份有限公司	
SCALE :	UNIT : mm	THIS DRAWINGS AND SPECIFICATIONS ARE THE PROPERTY OF INPAQ TECHNOLOGY CO.,LTD.AND SHALL NOT BE REPRODUCED OR USED AS THE BASIS FOR THE MANUFACTURE OR SALE OF APPARATUS OR DEVICES WITHOUT PERMISSION	
DRAWN BY : 程国富	CHECKED BY : 蒋代勇		
DESIGNED BY : 蒋代勇	APPROVED BY : 夏彪		
TITLE : <u>WAG-F-LAG0-00-047</u> Specification		DOCUMENT NO.	PAGE REV. A0



4. Testing Environment

Passive Test

Please refer to antenna test photos for details.

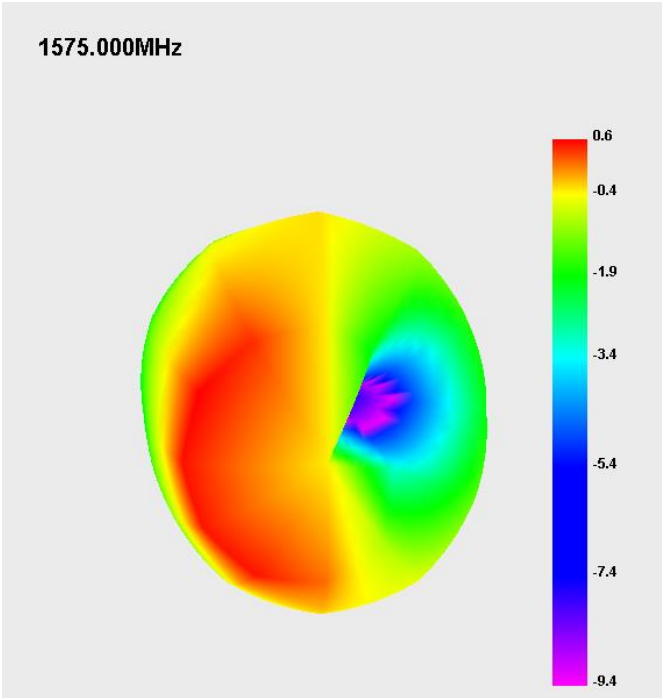
Active Test

UNLESS OTHER SPECIFIED TOLERANCES ON : X=±2 X.X=±0.1 X.XX=±0.05 ANGLES=± HOLEDIA=±		浙江海通通讯电子股份有限公司	
SCALE :	UNIT : mm	THIS DRAWINGS AND SPECIFICATIONS ARE THE PROPERTY OF INPAQ TECHNOLOGY CO.,LTD.AND SHALL NOT BE REPRODUCED OR USED AS THE BASIS FOR THE MANUFACTURE OR SALE OF APPARATUS OR DEVICES WITHOUT PERMISSION	
DRAWN BY : 程国富	CHECKED BY : 蒋代勇		
DESIGNED BY : 蒋代勇	APPROVED BY : 夏彪		
TITLE : <u>WAG-F-LAG0-00-047</u> Specification		DOCUMENT NO.	PAGE REV. A0
PAGE 5 OF 5			

Please refer to antenna test photos for details.

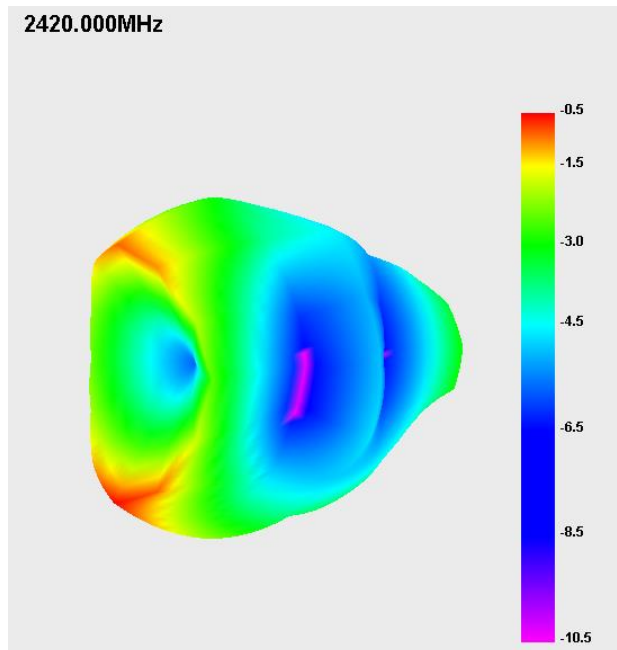
5.3D Radiation Pattern

GPS [1575MHz]

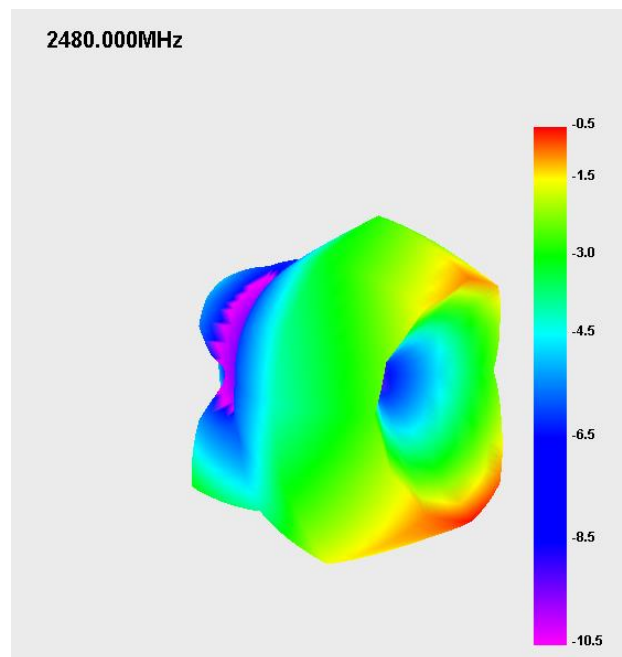


BT/WiFi 2.4GHz C0 [2420MHz]

UNLESS OTHER SPECIFIED TOLERANCES ON : X=±2 X.X=±0.1 X.XX=±0.05 ANGLES=± HOLEDIA=±		浙江海通通讯电子股份有限公司	
SCALE :	UNIT : mm	THIS DRAWINGS AND SPECIFICATIONS ARE THE PROPERTY OF INPAQ TECHNOLOGY CO.,LTD.AND SHALL NOT BE REPRODUCED OR USED AS THE BASIS FOR THE MANUFACTURE OR SALE OF APPARATUS OR DEVICES WITHOUT PERMISSION	
DRAWN BY : 程国富	CHECKED BY : 蒋代勇		
DESIGNED BY : 蒋代勇	APPROVED BY : 夏彪		
TITLE : <u>WAG-F-LAG0-00-047</u> Specification		DOCUMENT NO.	PAGE REV. A0



BT/WiFi 2.4GHz C0 [2480MHz]



UNLESS OTHER SPECIFIED TOLERANCES ON :		浙江海通通讯电子股份有限公司	
X=±2 X.X=±0.1 X.XX=±0.05			
ANGLES=±			