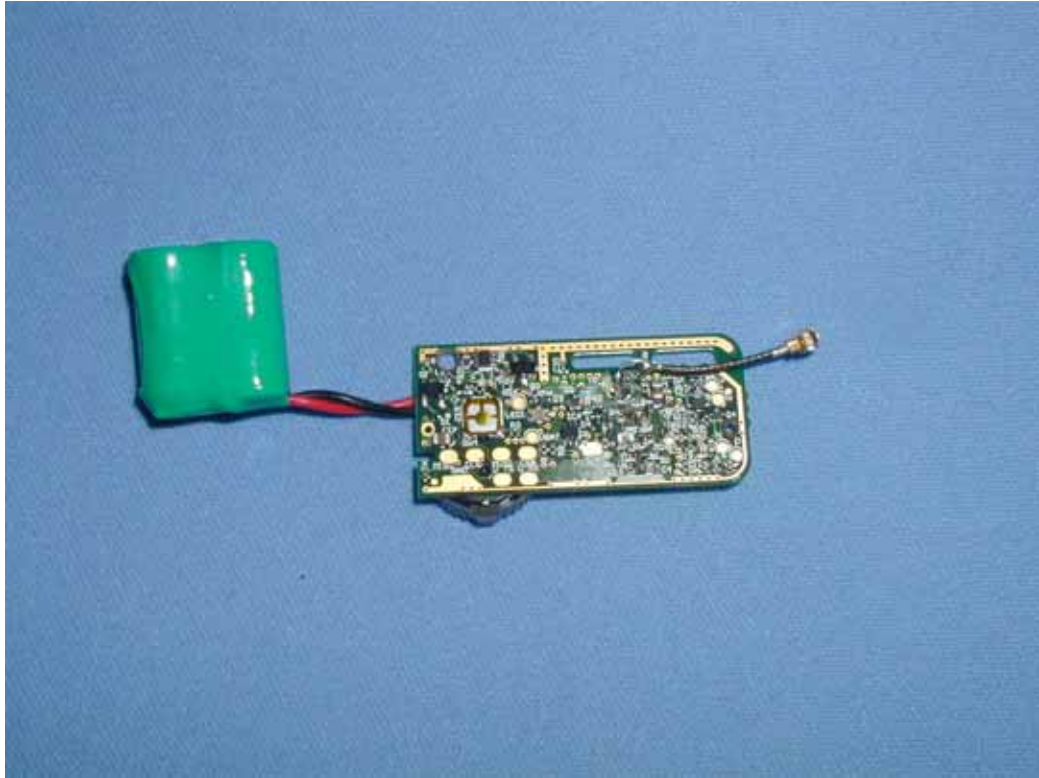


## 1.10 TEST ARRANGEMENT (PHOTOGRAPHS)

### PHOTOGRAPHS OF THE CONDUCTED TEST



**PHOTOGRAPHS OF EUT CONFIGURATION FOR RADIATED EMISSIONS MEASUREMENT**

Photograph present configuration with maximum emission



- Front view (AC Adaptor operation X axis) -



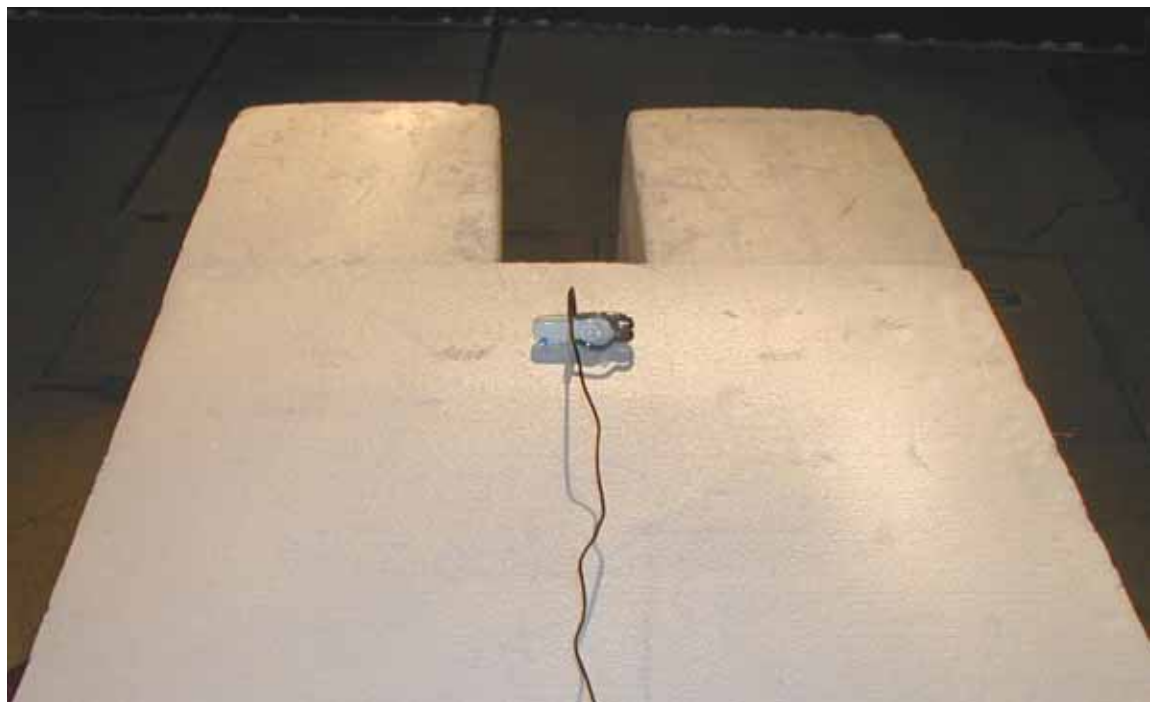
- Rear view (AC Adaptor operation X axis) -

**PHOTOGRAPHS OF EUT CONFIGURATION FOR RADIATED EMISSIONS MEASUREMENT**

Photograph present configuration with maximum emission



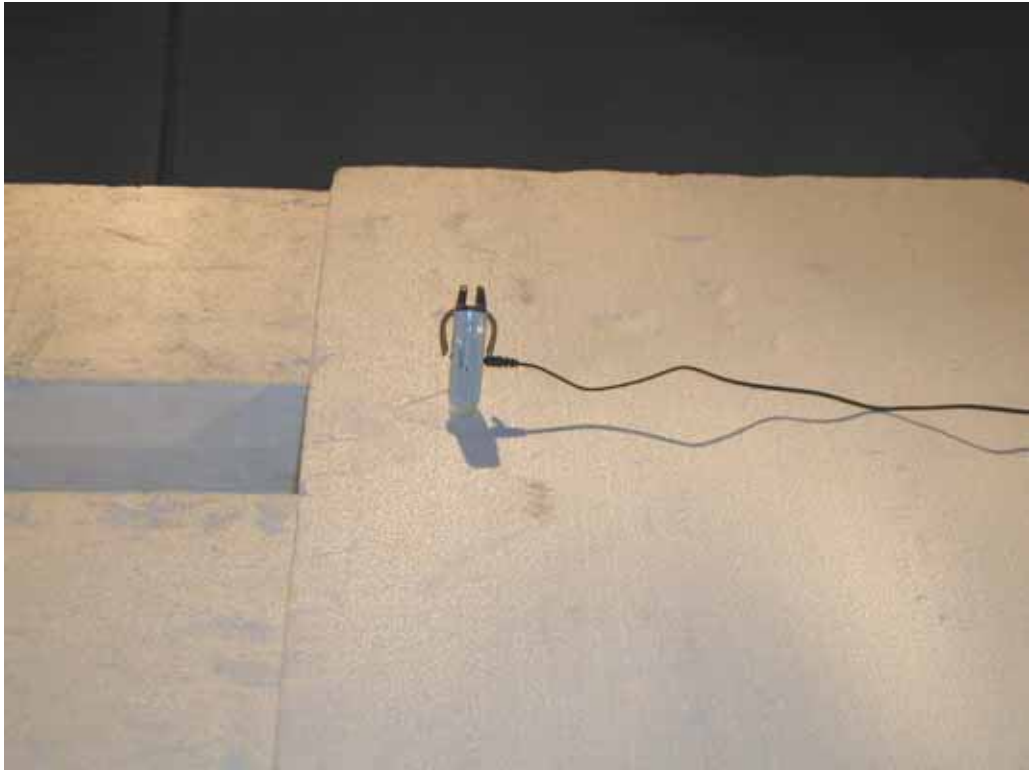
- Front view (AC Adaptor operation Y axis) -



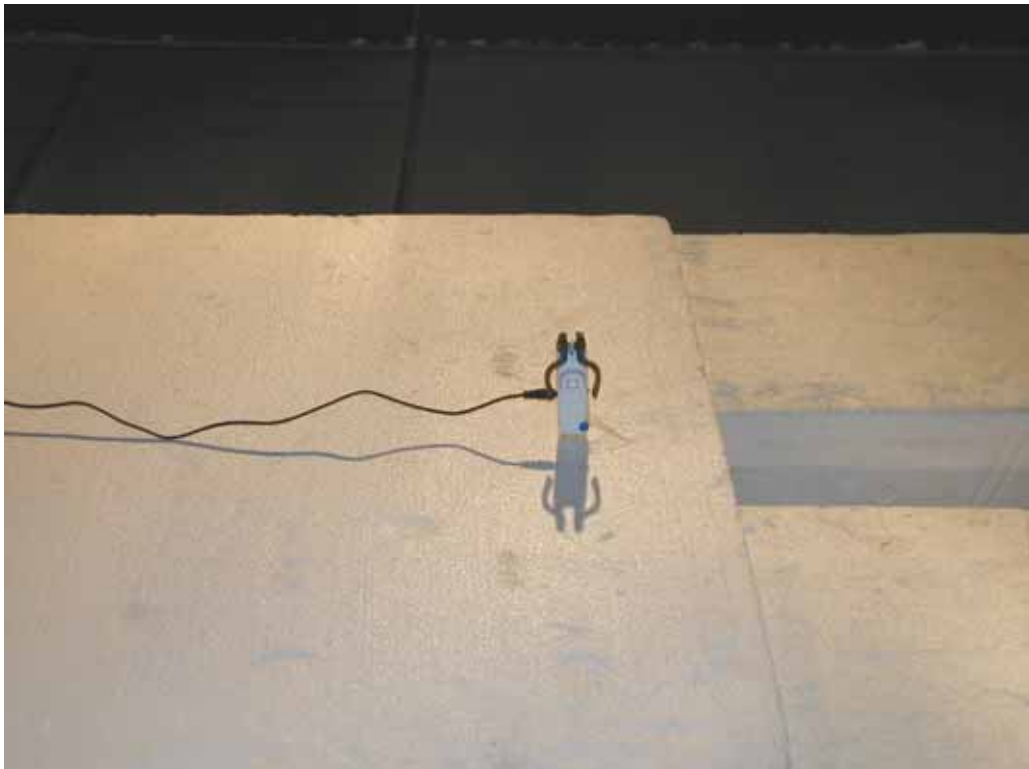
- Rear view (AC Adaptor operation Y axis) -

**PHOTOGRAPHS OF EUT CONFIGURATION FOR RADIATED EMISSIONS MEASUREMENT**

Photograph present configuration with maximum emission



- Front view (AC Adaptor operation Z axis) -



- Rear view (AC Adaptor operation Z axis) -

---

**PHOTOGRAPHS OF EUT CONFIGURATION FOR RADIATED EMISSIONS MEASUREMENT**

Photograph present configuration with maximum emission



- Front view (DC Adaptor operation X axis) -



- Rear view (DC Adaptor operation X axis) -



---

**PHOTOGRAPHS OF EUT CONFIGURATION FOR RADIATED EMISSIONS MEASUREMENT**

Photograph present configuration with maximum emission



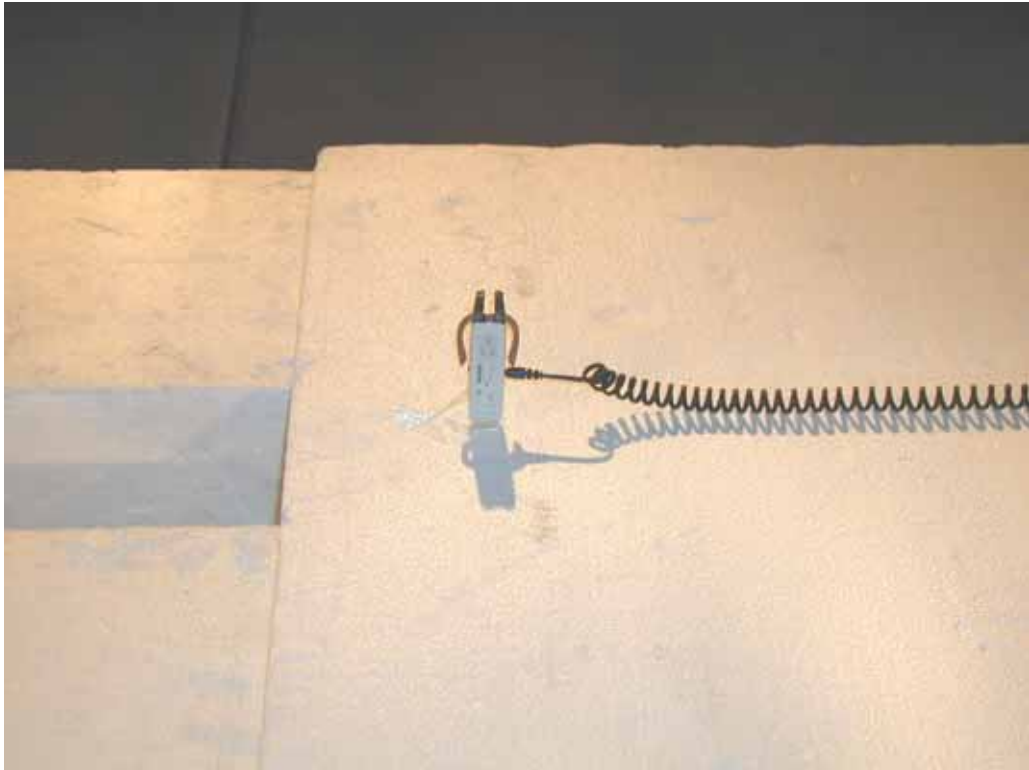
- Front view (DC Adaptor operation Y axis) -



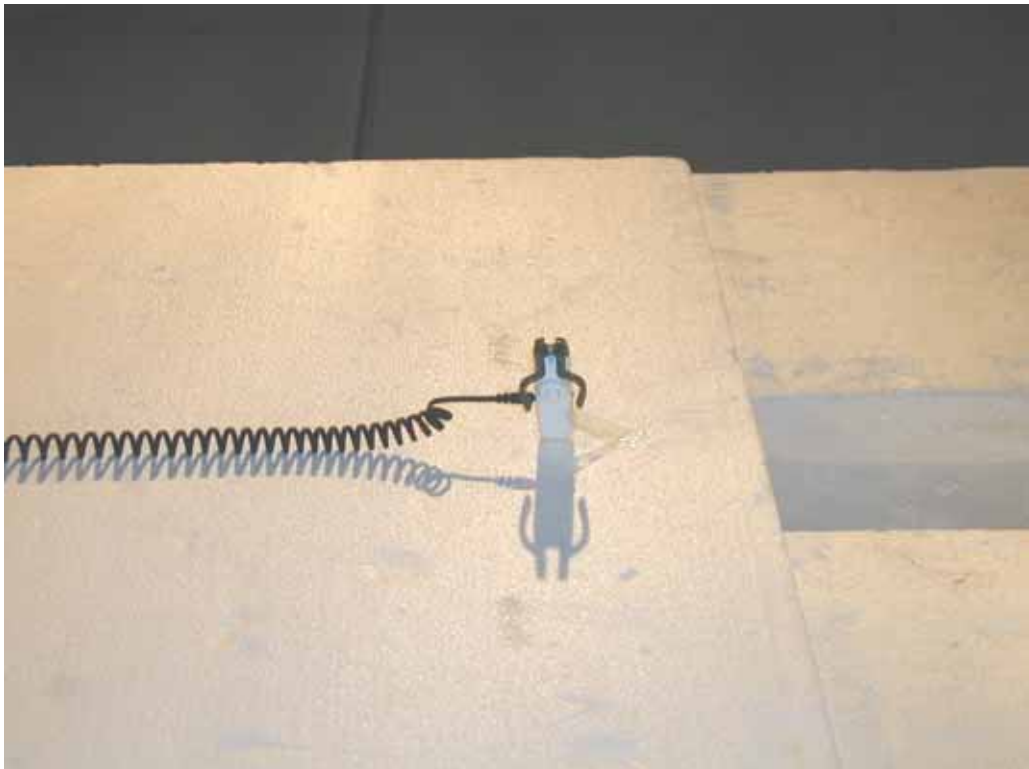
- Rear view (DC Adaptor operation Y axis) -

**PHOTOGRAPHS OF EUT CONFIGURATION FOR RADIATED EMISSIONS MEASUREMENT**

Photograph present configuration with maximum emission



- Front view (DC Adaptor operation Z axis) -



- Rear view (DC Adaptor operation Z axis) -

**PHOTOGRAPHS OF EUT CONFIGURATION FOR AC POWER LINE CONDUCTED EMISSION MEASUREMENT**

Photograph present configuration with maximum emission



- Front view -



- Side View -