

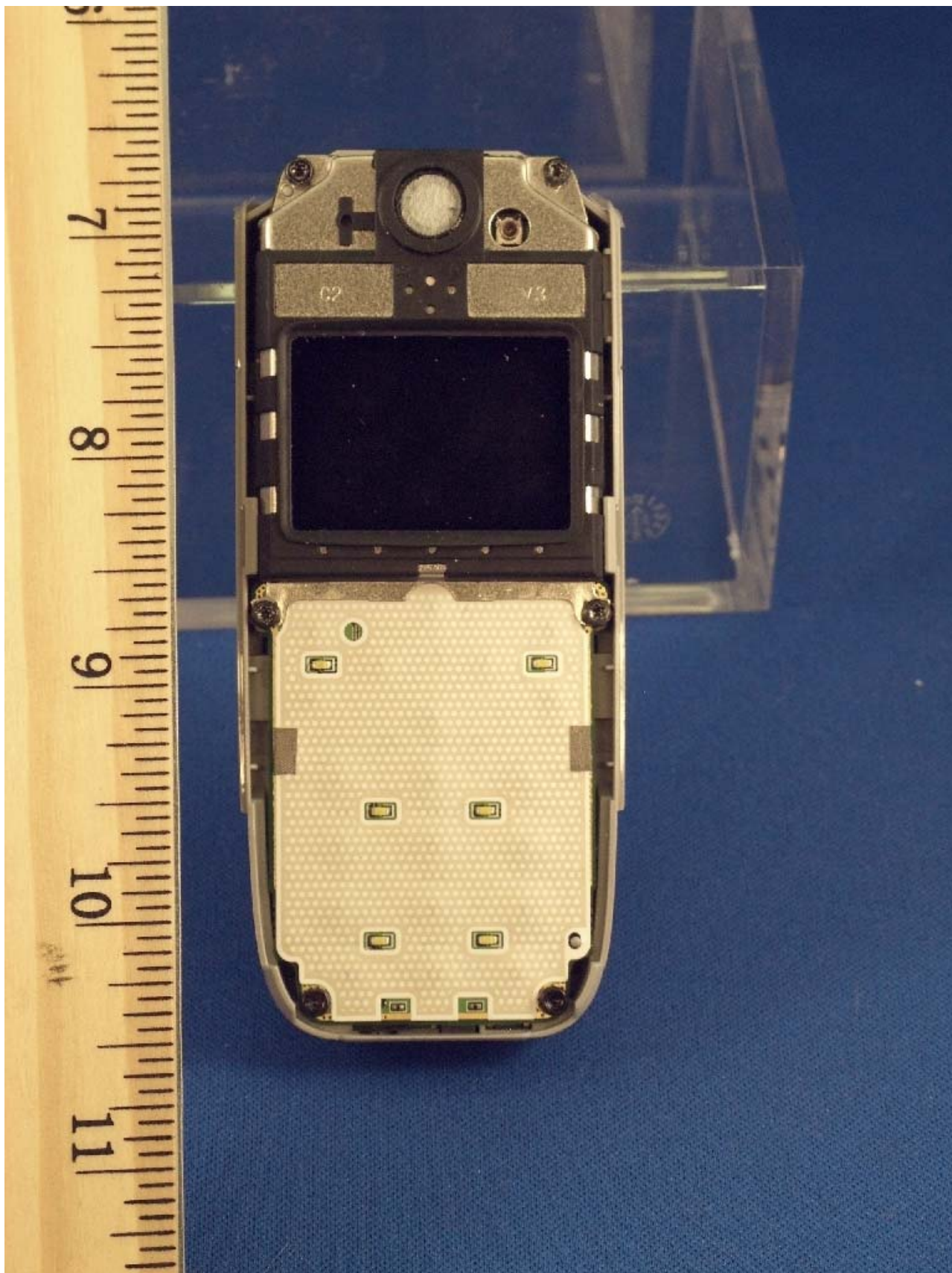
CDMA Business Unit/Product Test Factory
Certification Management

Model: 1315
FCC ID: QMNRH-96



CDMA Business Unit/Product Test Factory
Certification Management

Model: 1315
FCC ID: QMNRH-96



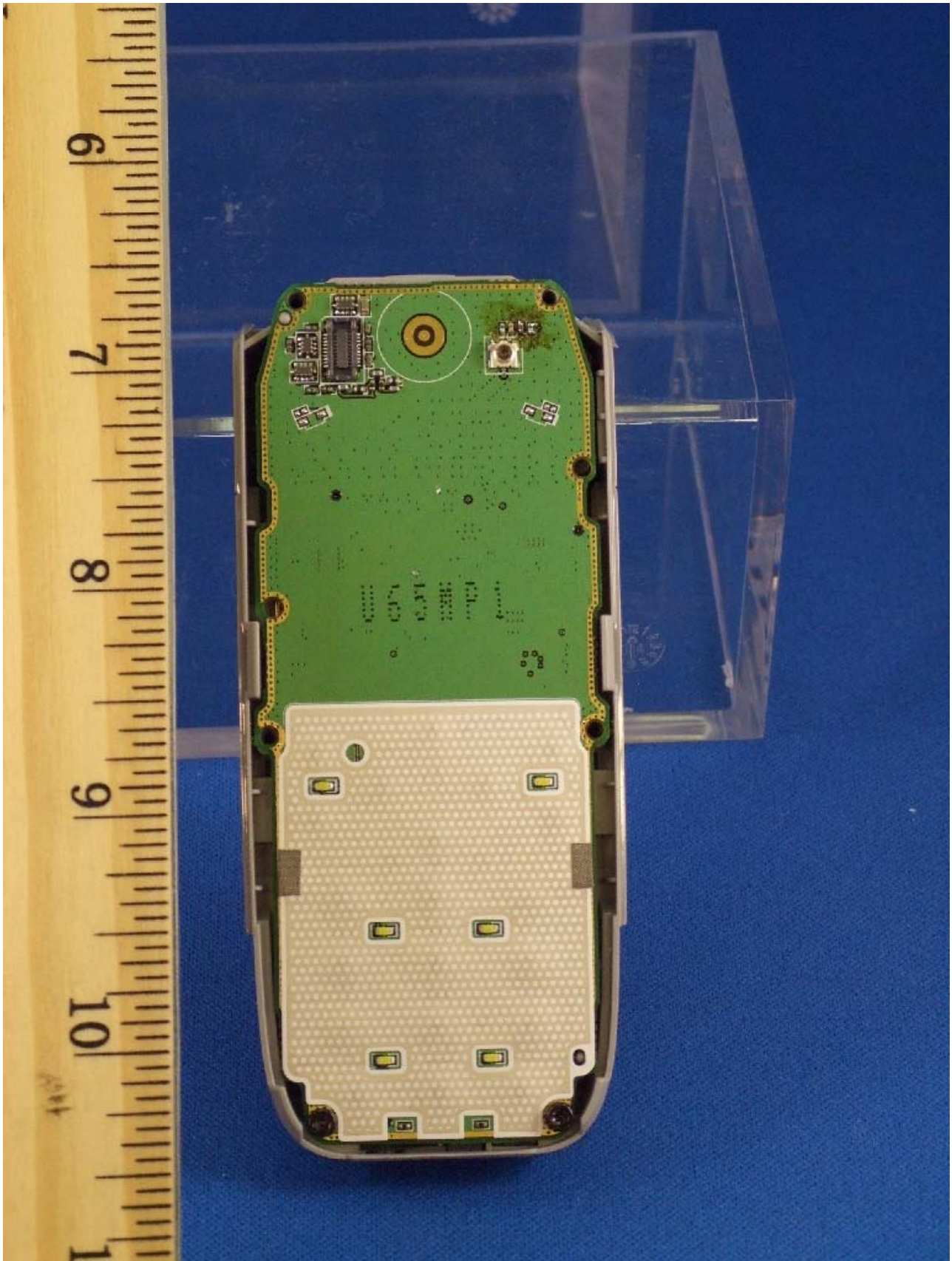
CDMA Business Unit/Product Test Factory
Certification Management

Model: 1315
FCC ID: QMNRH-96



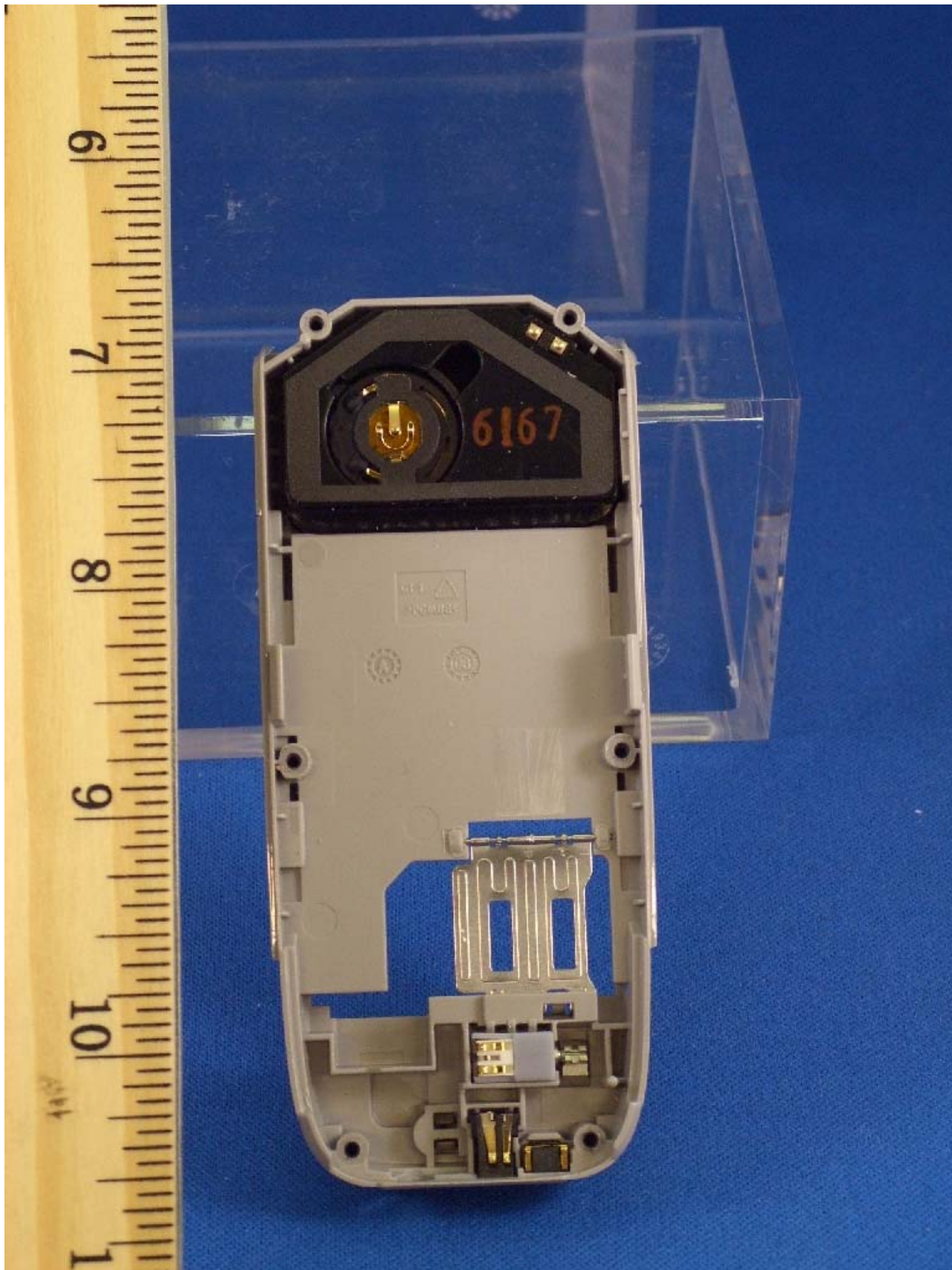
CDMA Business Unit/Product Test Factory
Certification Management

Model: 1315
FCC ID: QMNRH-96



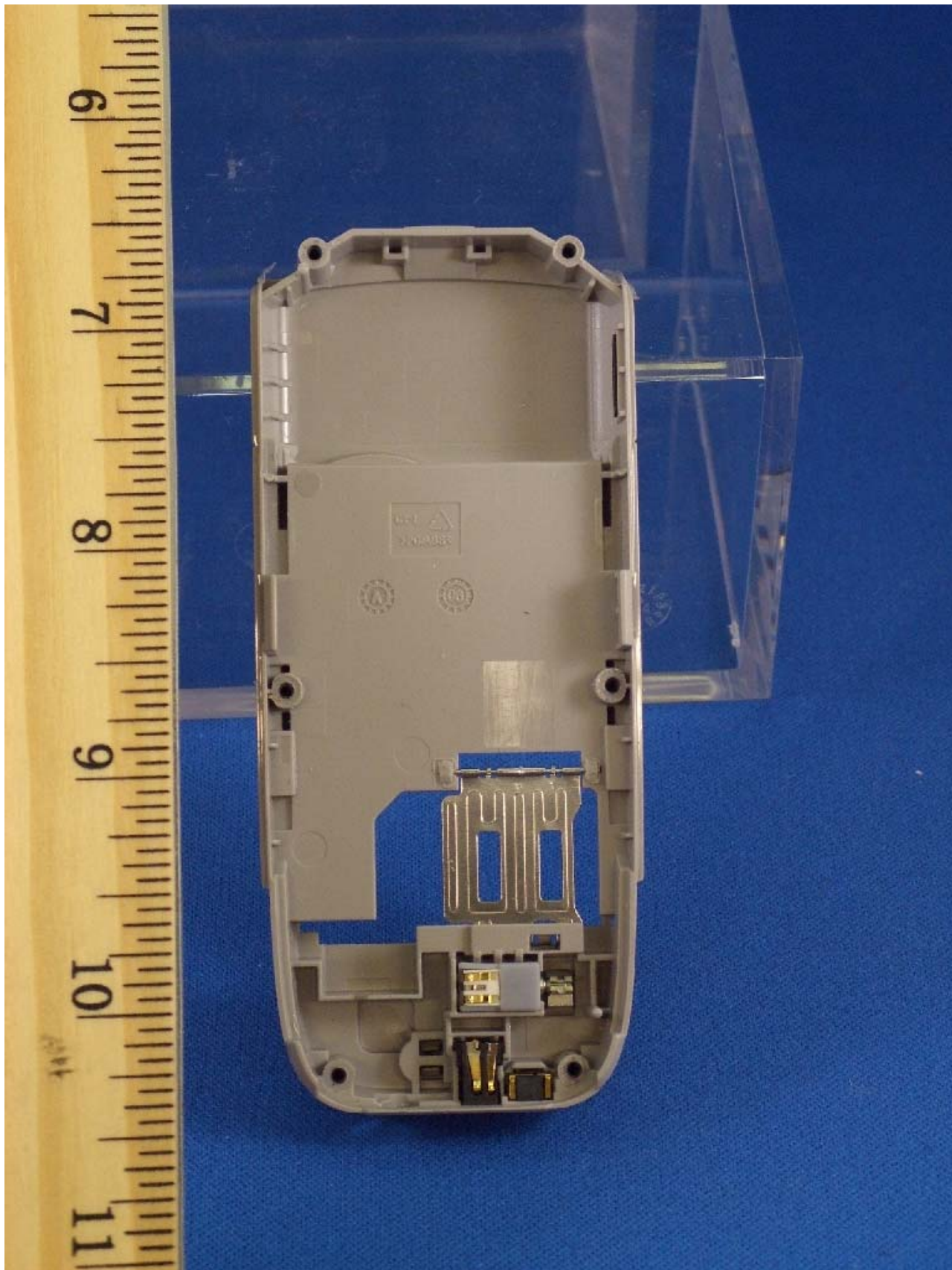
CDMA Business Unit/Product Test Factory
Certification Management

Model: 1315
FCC ID: QMNRH-96



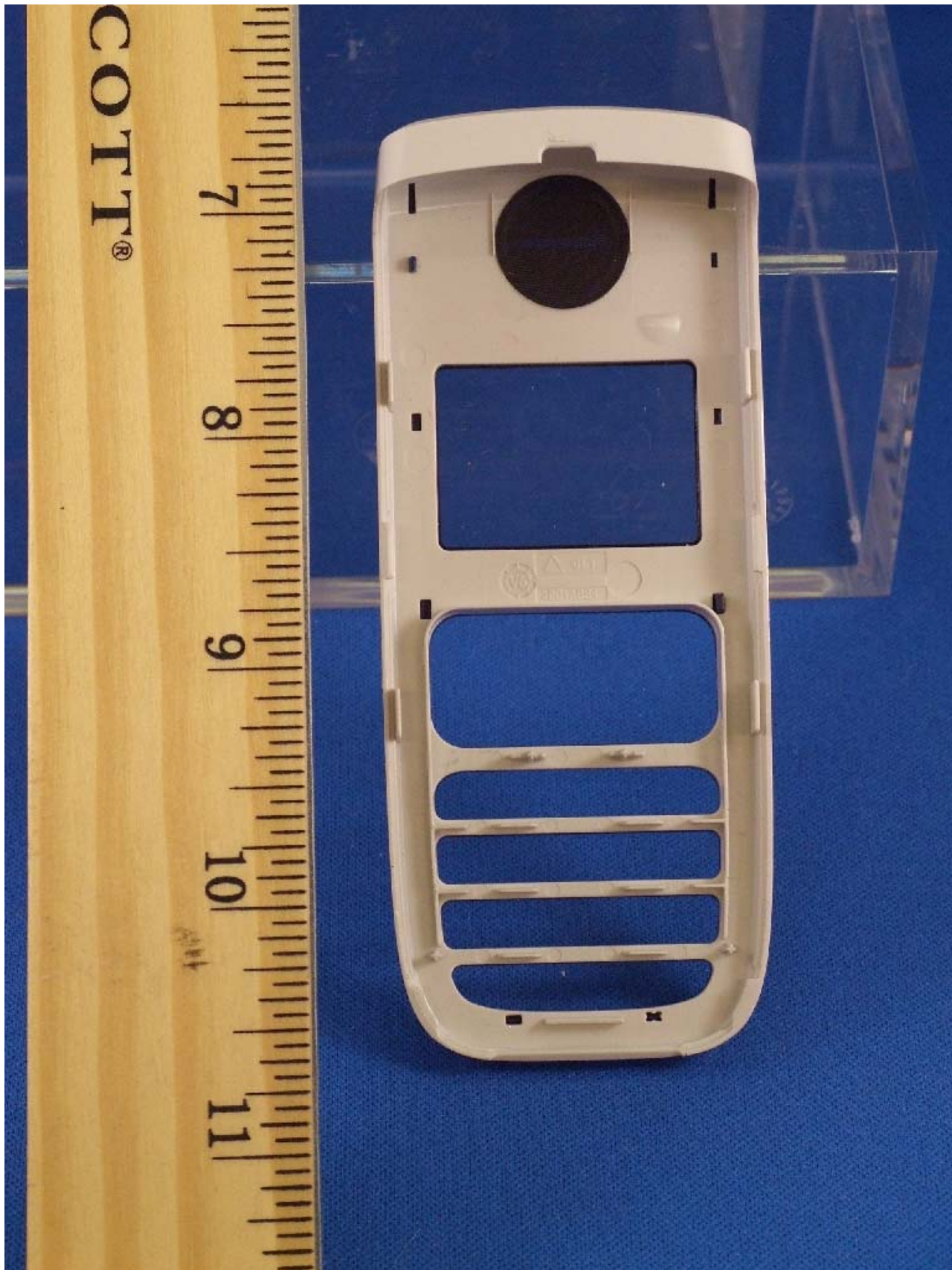
CDMA Business Unit/Product Test Factory
Certification Management

Model: 1315
FCC ID: QMNRH-96



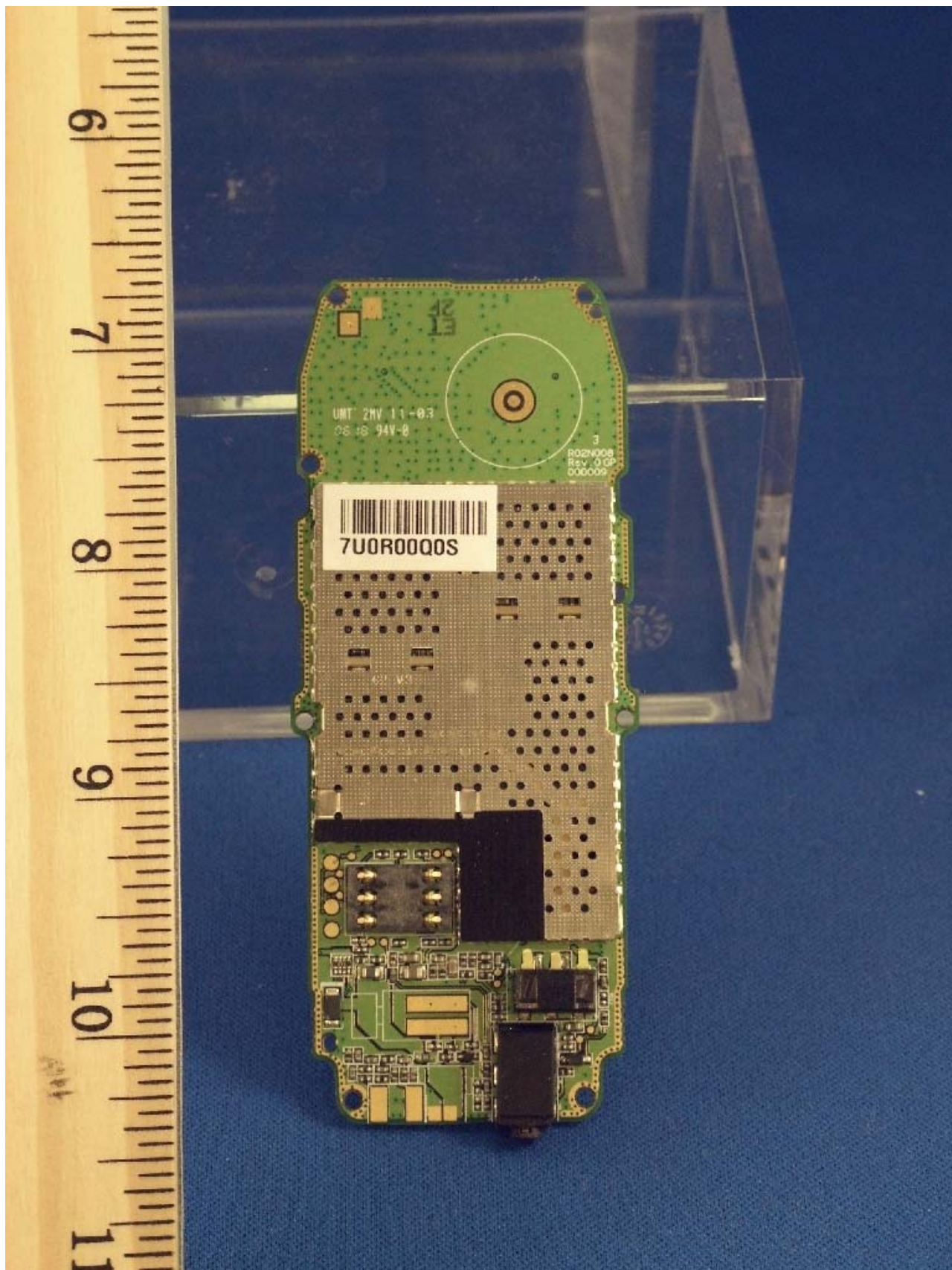
CDMA Business Unit/Product Test Factory
Certification Management

Model: 1315
FCC ID: QMNRH-96



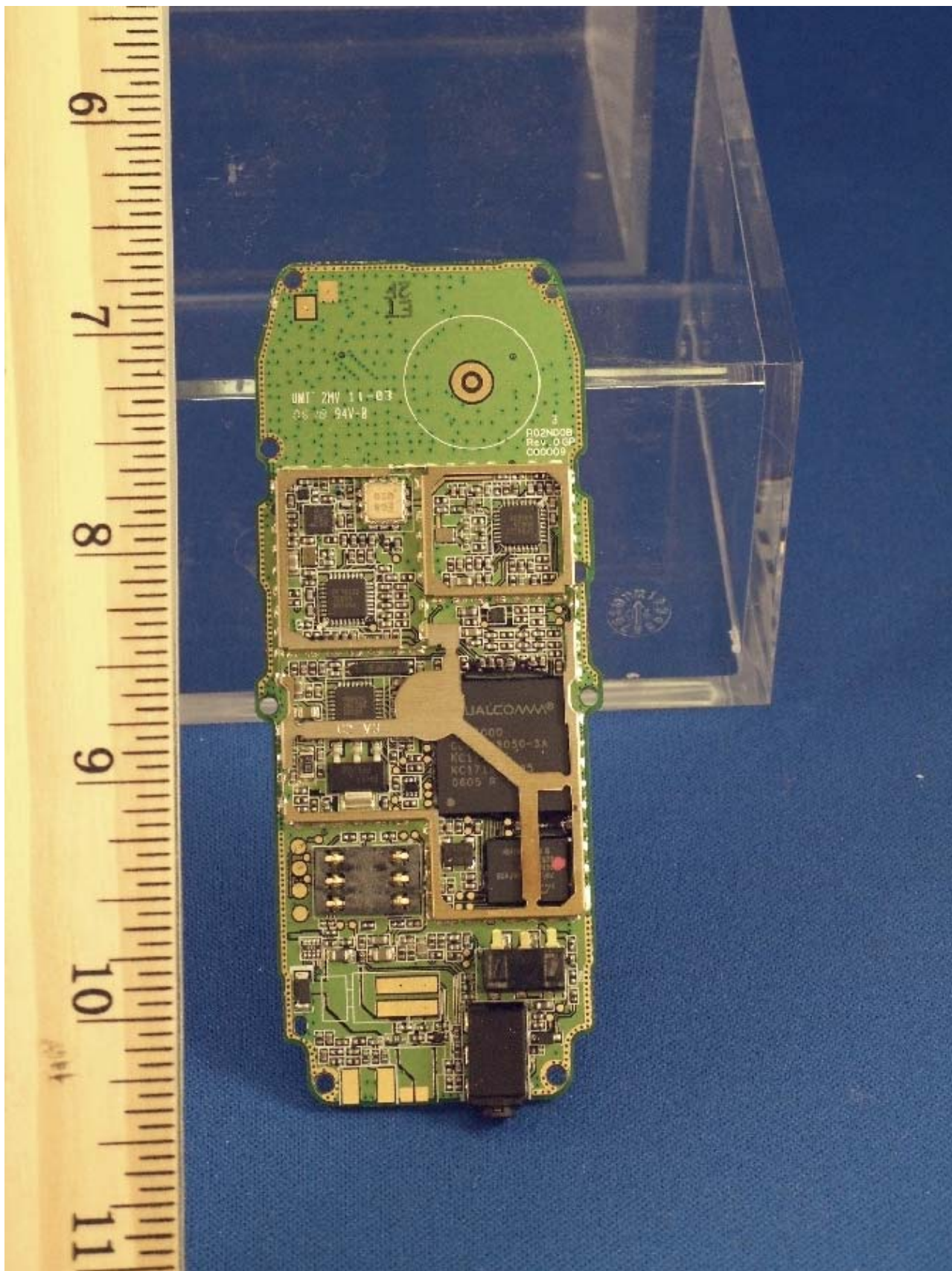
CDMA Business Unit/Product Test Factory
Certification Management

Model: 1315
FCC ID: QMNRH-96



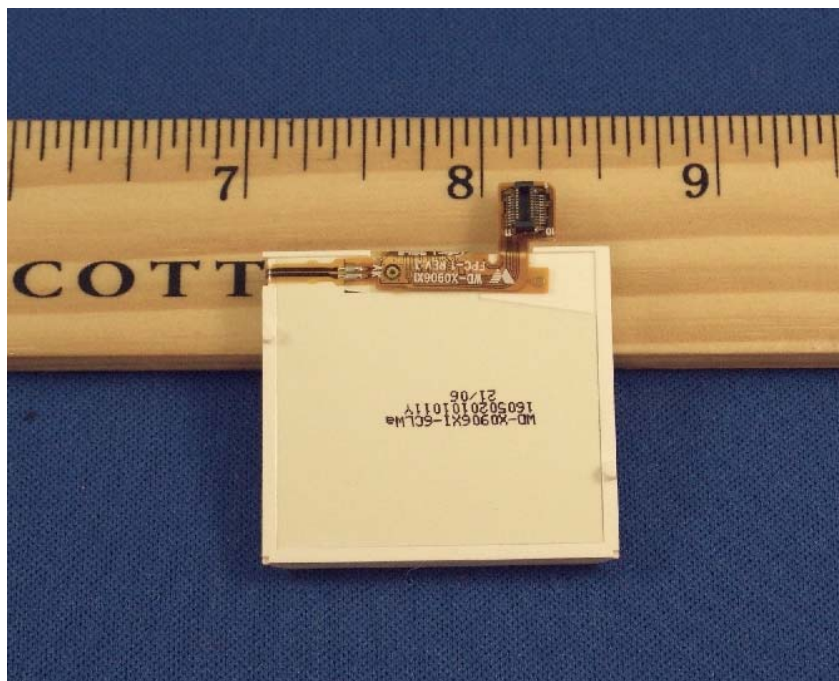
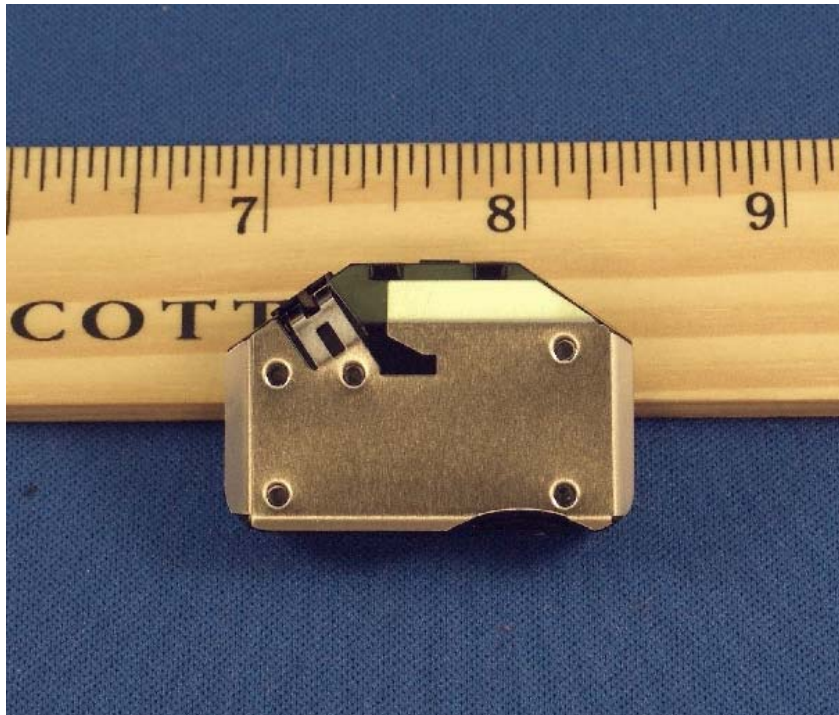
CDMA Business Unit/Product Test Factory
Certification Management

Model: 1315
FCC ID: QMNRH-96



CDMA Business Unit/Product Test Factory
Certification Management

Model: 1315
FCC ID: QMNRH-96



CDMA Business Unit/Product Test Factory
Certification Management

Model: 1315
FCC ID: QMNRH-96

