

# 802.11b/g WLAN USB 2.0 Mini Card with PCI-E mini Card Form Factor

CAMEO / WLG-1801 User's Guide

## **Regulatory notes and statements**

### **Federal Communication Commission Interference Statement**

This equipment has been tested and found to comply with the limits for a Class B digital device, pursuant to Part 15 of the FCC Rules. These limits are designed to provide reasonable protection against harmful interference in a residential installation. This equipment generates, uses and can radiate radio frequency energy and, if not installed and used in accordance with the instructions, may cause harmful interference to radio communications. However, there is no guarantee that interference will not occur in a particular installation. If this equipment does cause harmful interference to radio or television reception, which can be determined by turning the equipment off and on, the user is encouraged to try to correct the interference by one of the following measures:

- Reorient or relocate the receiving antenna.
- Increase the separation between the equipment and receiver.
- Connect the equipment into an outlet on a circuit different from that to which the receiver is connected.
- Consult the dealer or an experienced radio/TV technician for help.

This device complies with Part 15 of the FCC Rules. Operation is subject to the following two conditions: (1) This device may not cause harmful interference, and (2) this device must accept any interference received, including interference that may cause undesired operation.

**FCC Caution:** Any changes or modifications not expressly approved by the party responsible for compliance could void the user's authority to operate this equipment.

### **IMPORTANT NOTE:**

#### **FCC Radiation Exposure Statement:**

This equipment complies with FCC radiation exposure limits set forth for an uncontrolled environment. This equipment should be installed and operated with minimum distance 20cm between the radiator & your body.

This transmitter must not be co-located or operating in conjunction with any other antenna or transmitter. We declare this product is limited in CH1-CH11 for 2.4G band by specific firmware controlled by the manufacturer and is not user changeable.

This device is intended only for OEM integrators under the following conditions:

- 1) The antenna must be installed such that 20 cm is maintained between the antenna and users, and
- 2) The transmitter module may not be co-located with any other transmitter or antenna.
- 3) For all products market in US, OEM has to limit the operation channels in CH1 to CH11 for 2.4G band by supplied firmware programming tool. And OEM shall not supply any tool or info to the end-user regarding to change the domain selection. As long as 3 conditions above are met, further transmitter test will not be required. However, the OEM integrator is still responsible for testing their end-product for any additional compliance requirements required with this module installed (for example, digital device emissions, PC peripheral requirements, etc.).

**IMPORTANT NOTE:** In the event that these conditions can not be met (for example certain laptop configurations or co-location with another transmitter), then the FCC authorization is no longer considered valid and the FCC ID can not be used on the final product. In these circumstances, the OEM integrator will be responsible for re-evaluating the end product (including the transmitter) and obtaining a separate FCC authorization.

### **End Product Labeling**

This transmitter module is authorized only for use in device where the antenna may be installed such that 20 cm may be maintained between the antenna and users (for example: Access point, Wireless Router, Notebook, etc.). The final end product must be labeled in a visible area with the following: “Contains TX FCC ID: NHPWLG1801”.

The OEM integrator has to be aware not to provide information to the end user regarding how to install or remove this RF module in the user’s manual of the end product which integrate this module.

The user’s manual for OEM integrators must include the following information in a prominent location “

**IMPORTANT NOTE:** To comply with FCC RF exposure compliance requirements, the antenna used for this transmitter must be installed to provide a separation distance of at least 20 cm from all persons and must not be co-located or operating in conjunction with any other antenna or transmitter. We declare this product is limited in CH1-CH11 for 2.4G band by specific firmware controlled by the manufacturer and is not user changeable.

## CE Mark Warning

This is a Class B product. In a domestic environment, this product may cause radio interference, in which case the user may be required to take adequate measures.

### Protection requirements for health and safety – Article 3.1a

Testing for electric safety according to EN 60950 has been conducted. These are considered relevant and sufficient.

### Protection requirements for electromagnetic compatibility – Article 3.1b

Testing for electromagnetic compatibility according to EN 301 489-1, EN 301 489-17 and EN 55024 has been conducted. These are considered relevant and sufficient.

### Effective use of the radio spectrum – Article 3.2

Testing for radio test suites according to EN 300 328-2 has been conducted. These are considered relevant and sufficient.

### CE in which Countries where the product may be used freely:

Germany, UK, Italy, Spain, Belgium, Netherlands, Portugal, Greece, Ireland, Denmark, Luxembourg, Austria, Finland, Sweden, Norway and Iceland.

France: except the channel 10 through 13, law prohibits the use of other channels.



HW.32 V2.00

---

使用本產品之系統製造商請於設備上標示本產品內含射頻模組：

ⓔ XXXyyyLPDzzzz-x"

經型式認證合格之低功率射頻電機，非經許可，公司、商號或使用者均不得擅自變更頻率、加大功率或變更原設計之特性及功能。

低功率射頻電機之使用不得影響飛航安全及干擾合法通信；經發現有干擾現象時，應立即停用，並改善至無干擾時方得繼續使用。前項合法通信，指依電信法規定作業之無線電通信。低功率射頻電機須忍受合法通信或工業、科學及醫療用電波輻射性電機設備之干擾。

# ***TABLE OF CONTENT***

---

Introduction .....	1
Overview of this User' s Guide.....	1
Product Features .....	2
Software Installation .....	3
Windows 98se/ME/2000/XP Utility and Driver Installation .....	3
Wireless Utility Setting.....	5
Technical Specifications.....	17

## ***INTRODUCTION***

---

Congratulations on your purchase of this 802.11b/g WLAN USB2.0 Mini Card with PCI-E mini Card Form Factor.

This manual contains detailed instructions in operation of this product. Please keep this manual for future reference.

802.11b/g WLAN USB2.0 Mini Card with PCI-E mini Card Form Factor, laptop computer can communicate with another computer in a wireless way. Easy-to-use utilities are bundled with PCI-E mini Card with Form Factor for configuration, monitoring, and diagnosis purposes.

802.11b/g WLAN USB2.0 Mini Card with PCI-E mini Card Form Factor can wirelessly transmit and receive data, minimizing the need for wired connections, at a speed of up to fifty-four megabit per second.

This product provides users with an access to real-time information anywhere in their organization. The mobility provides productivity and service, which are not available under wired networks. 802.11b/g WLAN USB2.0 Mini Card with PCI-E mini Card Form Factor configuration is easy to change from peer-to-peer networks, suitable for a small number of users, to full infrastructure networks of thousands of users that allow roaming around a broad area.

---

### **Overview of this User's Guide**

---

**Introduction.** 802.11b/g WLAN USB2.0 Mini Card with PCI-E mini Card Form Factor Adapter and its features.

**Software Installation.** Tells how to setup the driver and the utility setting.

**Technical Specifications.** Lists the technical (general, physical and environmental) specifications of the 802.11b/g WLAN USB2.0 Mini Card with PCI-E mini Card Form Factor.

## ***PRODUCT FEATURES***

---

- ◆ Compatible with IEEE 802.11g high rate standard to provide wireless Ethernet speeds of 54Mbps data rate
- ◆ Universal Serial Bus Rev.2.0, 1.1, 1.0 specification
- ◆ PCI-E mini card form factor design with USB 2.0 interface for Notebook.
- ◆ Support two IPEX compatible antenna connectors with diversity.
- ◆ Dynamic data rate scaling at 54, 48, 36, 24, 18, 12, 9 and 6Mbps for 802.11g
- ◆ Dynamic data rate scaling at 11, 5.5, 2 and 1Mbps for 802.11b
- ◆ Maximum reliability, throughput and connectivity with automatic data rate switching
- ◆ Supports WMM QoS (Wi-Fi Multimedia Quality of Service)
- ◆ Supports wireless data encryption with 64/128-bit WEP standard for security
- ◆ Supports WPA, WPA2, WPA-PSK, WPA2-PSK
- ◆ Drivers support Windows 98se, 2000, ME and XP
- ◆ Type approval compliant with FCC Part 15.247 for US, ETS 300 328 for Europe.

## SOFTWARE INSTALLATION

---

This section will lead you to install the driver and utility of the 802.11b/g WLAN USB2.0 Mini Card with PCI-E mini Card Form Factor.

---

### Windows 98se/ME/2000/XP Utility and Driver Installation

---

1. Insert the Wireless LAN USB 2.0 Adapter Driver & Utility CD-ROM into computer's CD-ROM Drive and it will automatically run a setup menu and install the driver and the utility, for Win98se, please reboot the system to install the driver to the system properly. In some specific setting on Windows system, you may need to proceed the software manually, go to your Windows Start menu and choose **Run**, type "D:\Utility\Setup.exe" in the dialog box (D:\ will depend on where your CD-ROM drive is located) and click **OK**.
2. If you need to install the driver manually, refer each Windows OS to the following CD-Rom directory path: D:\Drivers\<Windows OS>\SIS163U.INF.

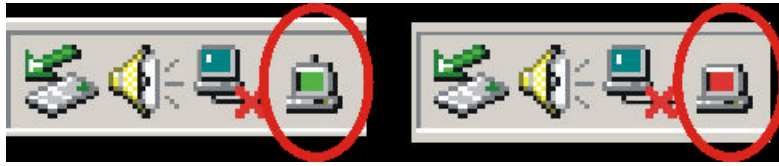
*Note: (D:\ will depends on where the CD-ROM drive is located and <Windows OS> will depend on the Windows Operating System you are using).*



3. The Install Shield Wizard screen will appear. Click "**Next**" to continue.
4. The installation program will help you to setup the Wireless Utility.

*Be noted that the Windows XP have its own Wireless Utility; you can either use the utility of Windows XP or the provided utility.*

5. You will see the icon on the Windows task bar when you finish the installation.



When the icon in the toolbar represents in green color, it is properly connected to the network and if it represents in red color, then it is not connected to the network.

---

## Wireless Utility Setting

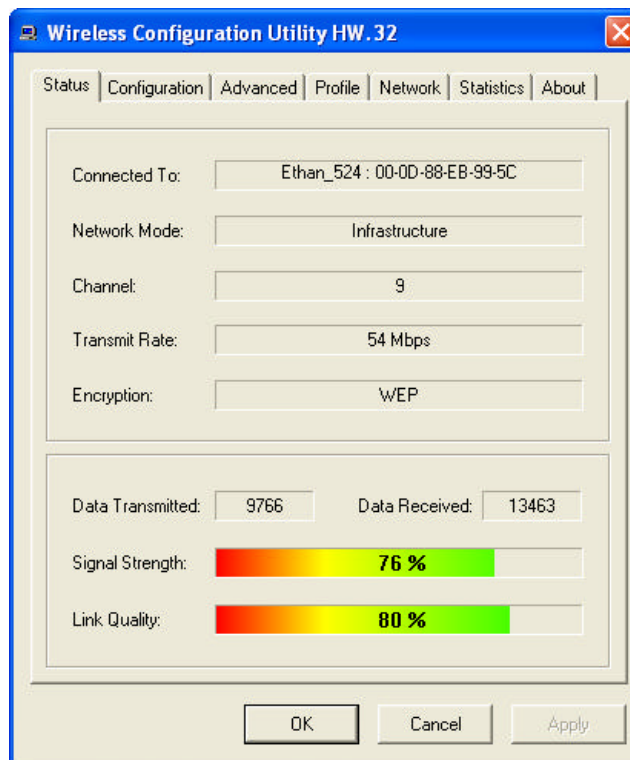
---

With the software utility, users can configure all the functions provided by the Wireless Monitor Utility. Double-click the utility icon that appears in the taskbar.

The Wireless Monitor Utility includes seven tabs: Status, Configuration, Advanced, Profile, Network, Statistics and About.

### Status

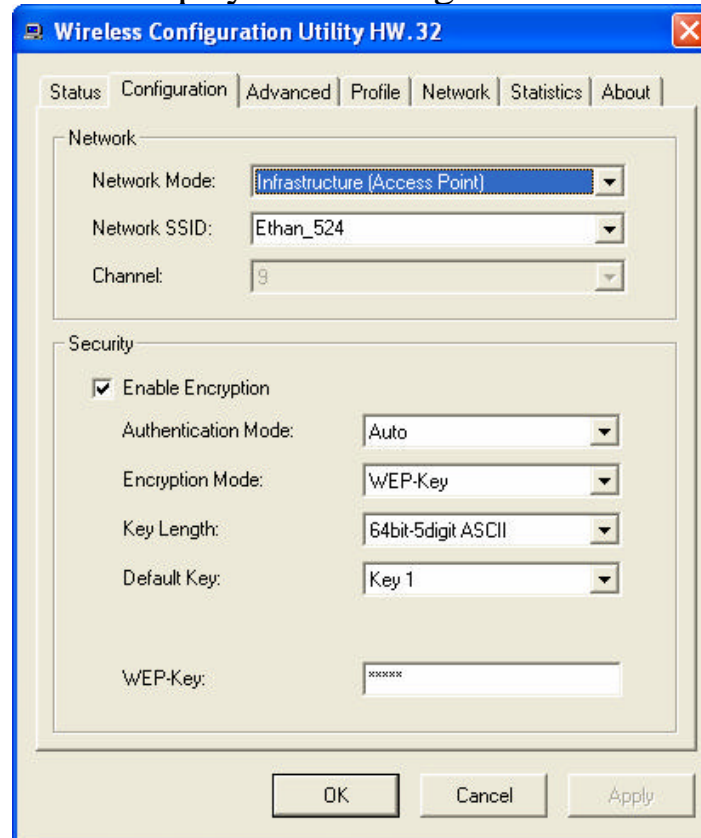
The Status screen shows you the status of the Wireless Adapter, it shows that where the device is connected to, the Network mode, the Channel, the transmit rate and the encryption mode.



There are two dialog boxes showing the data transmitted and the data received. The two signal lines show the Signal Strength and the Link Quality of the device.

## Configuration

The Configuration function helps you to configure the Network and the Security.



**Network:** the setting of the Network mode, the SSID and the Channels.

➤ **Network Mode:**

If you want to connect with an Access Point, please set to “Infrastructure” mode. If you have more stations and just want to set them as local network, please set the mode to “Ad-Hoc” mode.

➤ **Network SSID:**

The SSID differentiates one Wireless LAN group name from another; so all access points and all devices attempting to connect to a specific Wireless LAN group name must use the same SSID. A device will not be permitted to join the BSS unless it can provide the unique SSID.

If the SSID parameter is “ANY”, it will detect the strongest signal of the wireless station.

➤ **Channel:**

It shows radio channel numbers that used for Wireless LAN networking.

The channel number can be set on channel 1~11 only under the Ad-Hoc operation mode. In Ad-Hoc mode stations, each station must have the same channel numbers and SSID.

In Infrastructure mode, the Wireless USB Adapter will automatically detect the channel number of the Access Point.

**Security:** the setting of the Network Encryption.

This function is used to protect wireless communication from eavesdropping. A secondary function of encryption is to prevent unauthorized access to a wireless network, and it can be achieved by using the Encryption function.

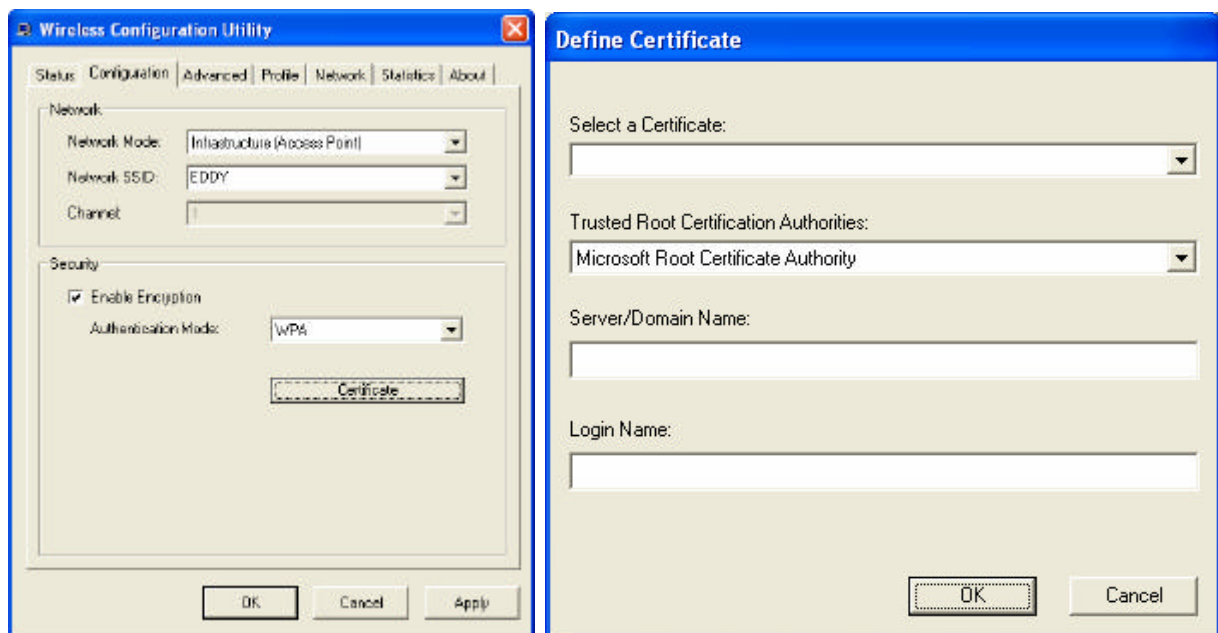
- Enable Encryption: **Enable** or **Disable** the WLAN encryption on the WLAN USB Adapter.
- Authentication Mode:

**Auto:** Will automatically adjust to the Authentication mode of the WLAN USB Adapter.

**Open System:** with the same WEP key between the stations, the stations don't need to be authenticated, and this algorithm was set to default.

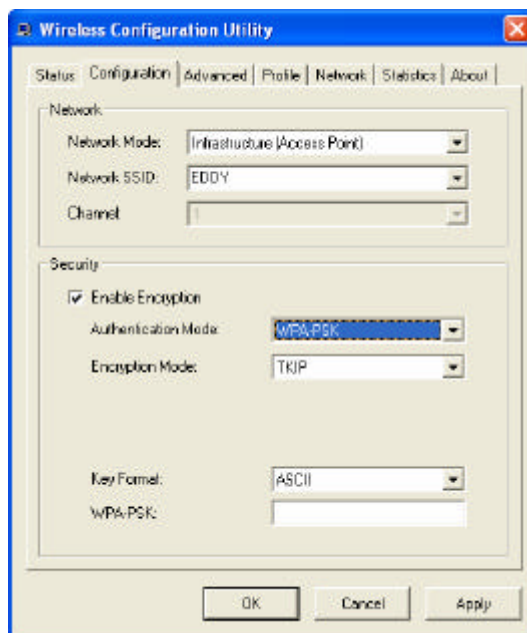
**Shared Key:** with the same WEP key between the stations in this Authentication algorithm, this type will use packets with encryption by transferring a challenge text which will be acknowledge by both side of the stations. In order to choose which authentication algorithm will be used, you must know which one the station supports this algorithm first.

**WPA: WPA (Wi-Fi Protected Access)** security is selected, configuration is enabled. Please click the “**Certificate**” button. The below window is pop up. Then, please select the certificate that user wants to use and enter the server name and login name.

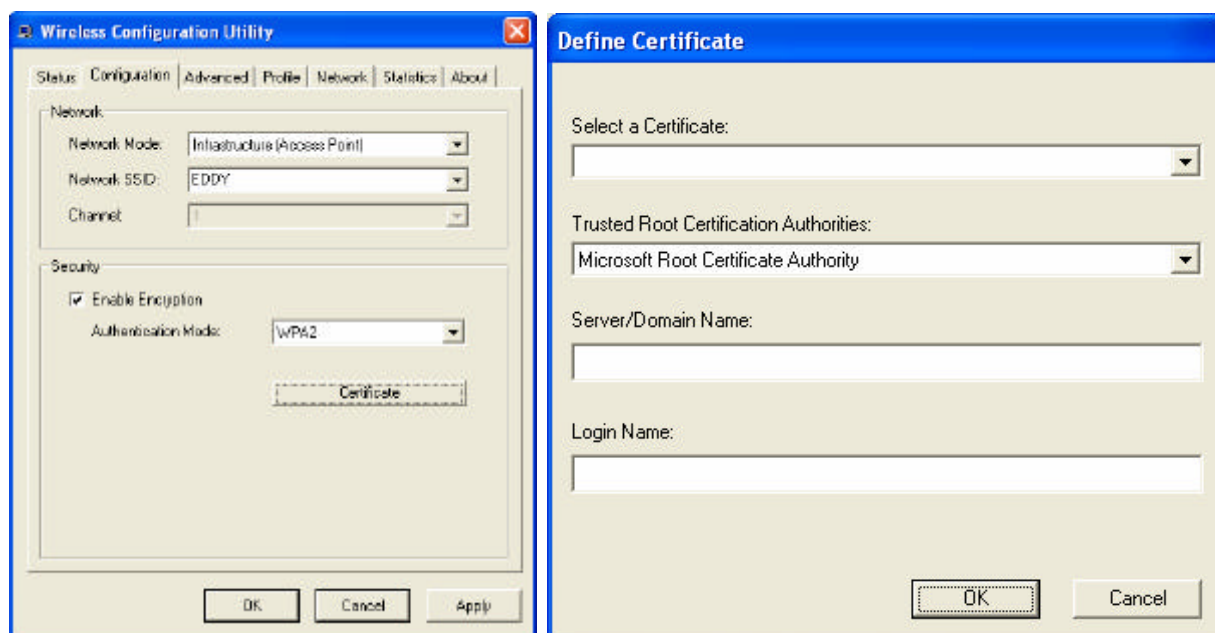


**WPA-PSK:** WPA-PSK (Wi-Fi Protected Access pre-shared key) is a simpler version that does not support 802.1x and requires a separate RADIUS server for mutual authentication.

Enter a Passphrase in the WPA-PSK dialog box. This Passphrase must be the same on each computer that is connected to the wireless network.

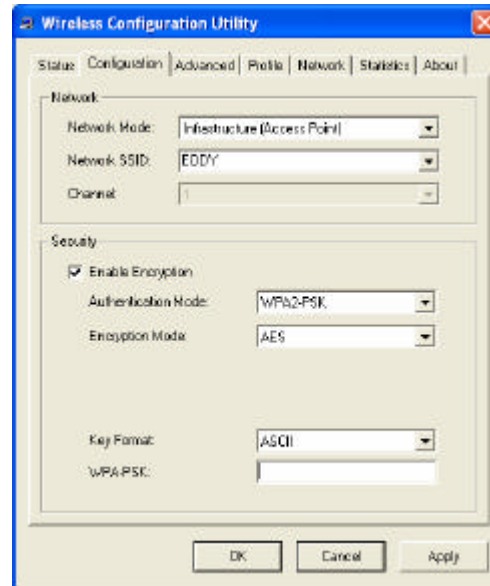


**WPA2:** WPA2 (Wi-Fi Protected Access 2) is the second generation of WPA; providing enterprise and consumer Wi-Fi user with a high level of assurance that only authorized user can access their wireless networks. WPA2 is based on the final IEEE802.11i amendment to the 802.11 standard and is eligible for FIPS 140-2 compliant. WPA2 is select, configuration is enabled. Please click the “**Certificate**” button. The below window is pop up. Then, please select the certificate that user wants to use and enter the server name and login name.



**WPA2-PSK:** WPA-PSK2 (Wi-Fi Protected Access pre-shared key) is a simpler version that does not support 802.1x and requires a separate RADIUS server for mutual authentication.

Enter a Passphrase in the WPA2-PSK dialog box. This Passphrase must be the same on each computer that is connected to the wireless network.



It is recommended to select “**Auto**” if you are not familiar with the setting.

➤ Encryption Mode:

There are two kinds of encryption mode, **WEP encryption** and **WPA-Passphrase**..

Click the **Enable Encryption** to activate the security of the USB Adapter.

**WEP-Key:** WEP (Wired Equivalent Privacy) relies on a secret key that is shared between a mobile station and a base station (Access Point).

**WEP-Passphrase:** the Passphrase in the dialog box helps you to create a group of WEP key in the Key Setting.

➤ Default Key (Key 1 ~ Key 4):

You can type the key that you want to use from Key#1 to Key #4, and the key that you type will be the encryption between the stations that you connected with.

➤ Key Length, Key Format and WEP Key:

If you select 64bit in Hex format, you must type 10 values in the following range (0~F, hexadecimal), or 64bit in ASCII format, you must type 5 values in the following range (0~9, A~Z and a~z Alphanumeric).

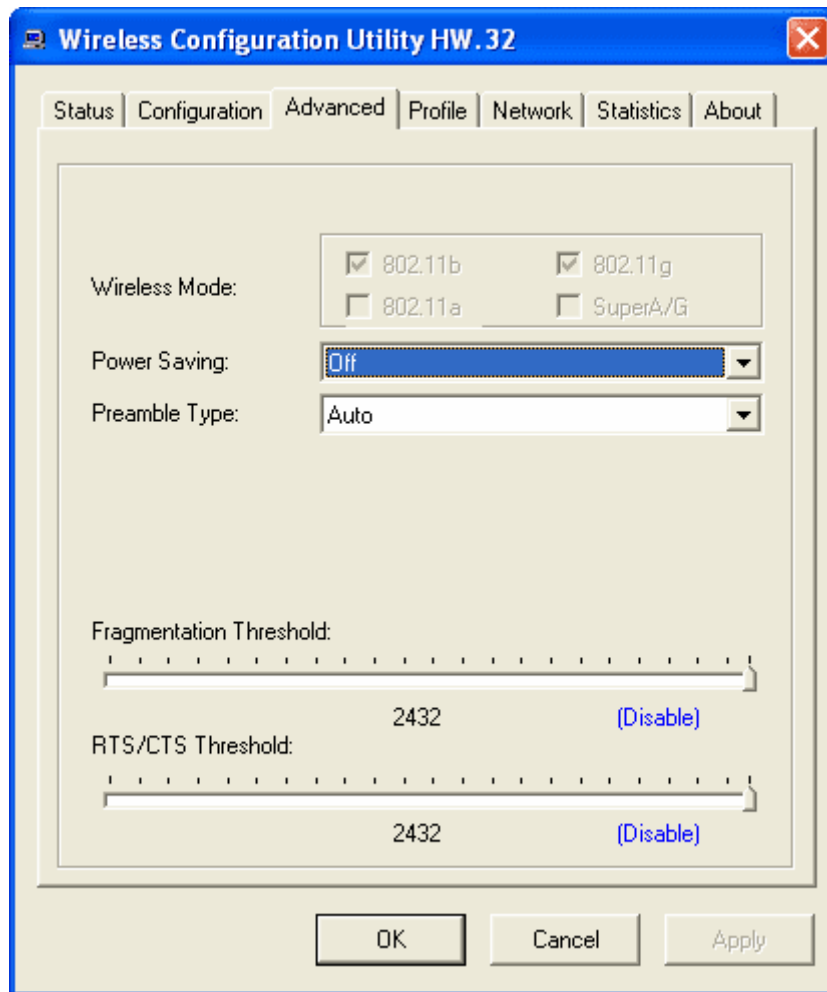
If you select 128bit in Hex format, you must type 26 values (0~F, hexadecimal), or 128bit in ASCII format, you must type 13 values in the following range (0~9, A~Z and a~z Alphanumeric).

Be sure that the USB Adapter and the wireless station were set in the same key.

***Note: After all the settings are completed, click Apply to save the setting.***

## Advanced

The Advanced settings help you to control the Wireless Adapter to adjust with wireless devices in certain environment.



### ➤ Wireless Mode: (Ad-Hoc mode only)

If the USB WLAN adapter is work with Ad-Hoc mode, there are two functions for users select, including 11B and 11G. The default setting is 11B, 11G, which is interoperable with both 11B and 11G devices.

### ➤ Power Saving:

To set your Wireless Adapter as power saving mode, select “Off”, “Normal” or “Maximum”.

### ➤ Preamble Type:

The usage of the preamble is to limit the packet size of the data to transmit. It is recommended to choose the short preamble when the link quality is bad, it is to prevent the wasting time of resending a long packet that is lost. The Default is Auto which access short and long preamble.

### ➤ Fragment Threshold:

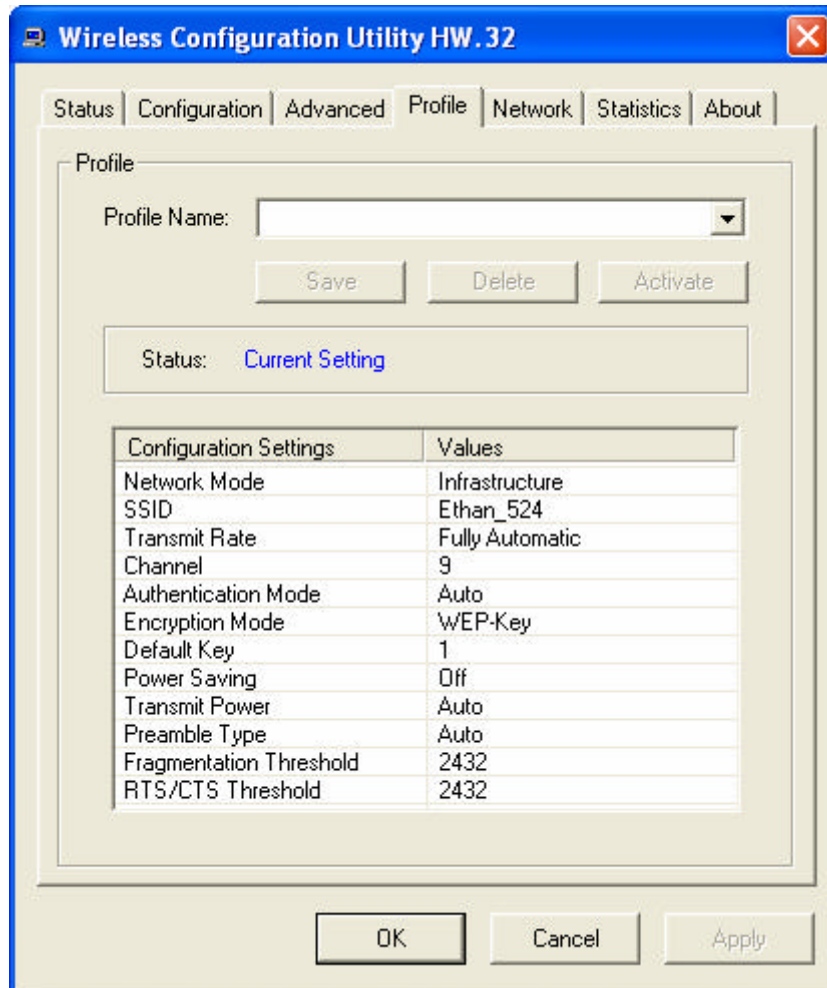
Fragmentation Threshold is a way of transmitting the packets that will be fragmented. Choose a setting within a range of 256 to 2432 bytes. It is recommended to fragment the packet when the link quality is bad, it is to prevent the wasting time of resending a long packet that is lost.

➤ **RTS/CTS Threshold:**

The RTS/CTS Threshold is a station initiates the process by sending a RTS frame, the other ends receives the RTS and responds with a CTS frame, the station must receive a CTS frame before sending the data frame. This is to prevent the collisions by each station. Choose a setting within a range of 256 to 2432 bytes. It is recommended limiting a long packet to prevent each station waiting too long to transmit a data.

## Profile

The Profile section allows you to set values for all parameters by selecting a previously defined profile. Type a name in the Profile Name field to create a profile, click “Save” and then click “Apply” when a profile is done. You can click “Delete” if the profile is no longer used, to activate other profile, choose a profile name in the Profile Name field and click Activate.



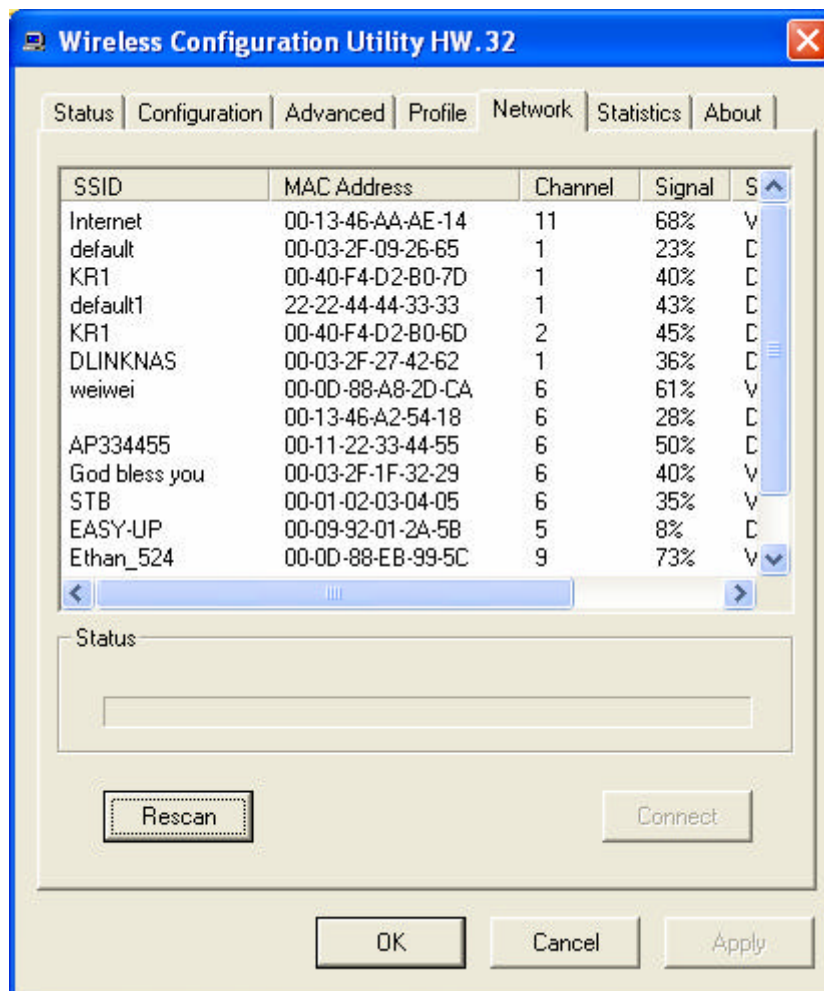
The screenshot shows the 'Profile' tab of the 'Wireless Configuration Utility HW.32' window. It features a 'Profile Name' dropdown menu, 'Save', 'Delete', and 'Activate' buttons, a 'Status' field showing 'Current Setting', and a table of configuration settings.

Configuration Settings	Values
Network Mode	Infrastructure
SSID	Ethan_524
Transmit Rate	Fully Automatic
Channel	9
Authentication Mode	Auto
Encryption Mode	WEP-Key
Default Key	1
Power Saving	Off
Transmit Power	Auto
Preamble Type	Auto
Fragmentation Threshold	2432
RTS/CTS Threshold	2432

## Network

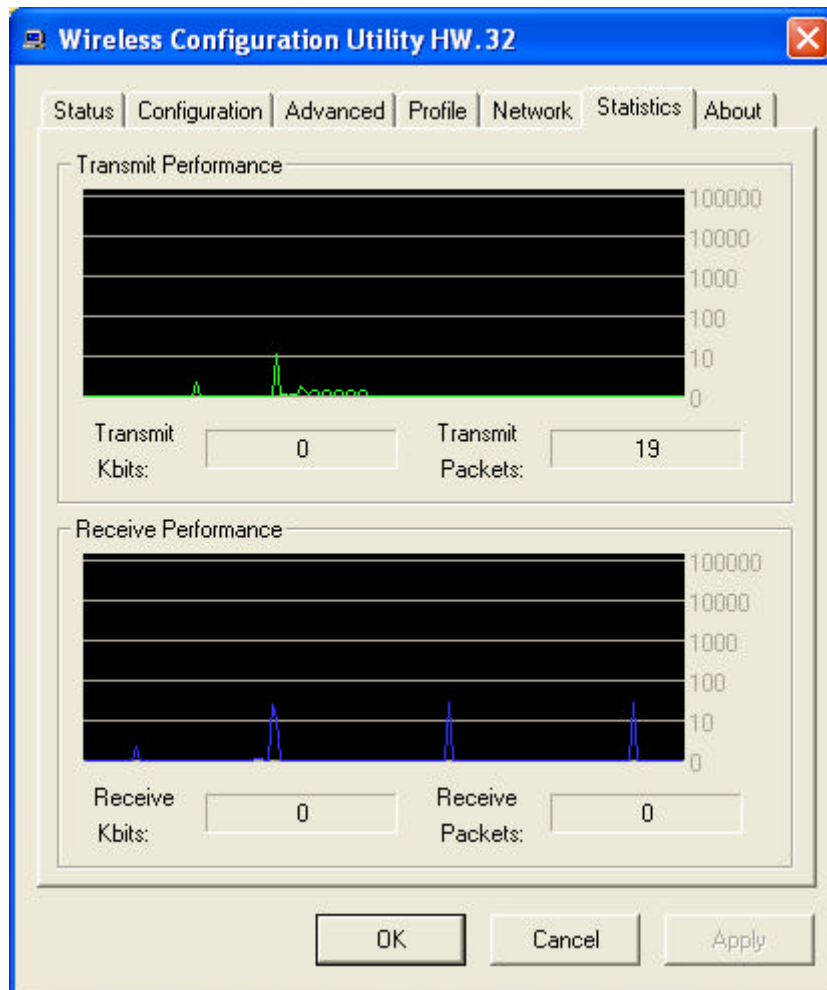
The screen shows all the Wireless devices around your Wireless Adapter. The information of the wireless devices includes the SSID, MAC Address, Channels, Signal, the Security type and the Network mode.

You can click the “Rescan” button to find the new wireless devices, and double-click the device to choose the wireless station that you want to connect with.



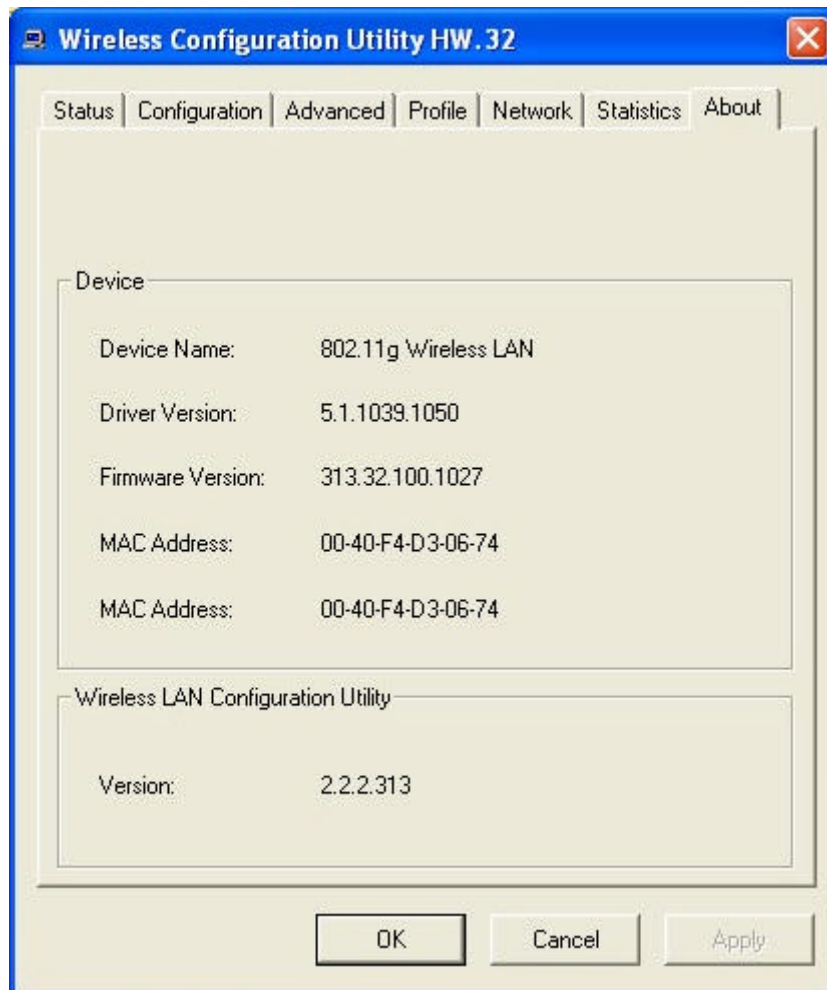
## Statistics

The Statistics section shows the real-time transmit and receive packets of the Wireless Adapter.



## About

The About section shows the Device Name, Regulatory Domain, Driver Version, MAC Address and the Utility version.



## TECHNICAL SPECIFICATIONS

### General

Standards	IEEE 802.11g WLAN 20 mini card with PCI-E mini Card Form Factor.
Radio Technology	IEEE 802.11b Direct Sequence Spread Spectrum (DSSS) IEEE 802.11g Orthogonal Frequency Division Multiplexing (OFDM)
Data Transfer Rate	1, 2, 5.5, 6, 9, 11, 12, 18, 24, 36, 48, 54Mbps (auto sense) *When plug the device in the USB 1.1/1.0 port, the real throughput will be up to 6Mbps only when running 11Mbps or higher speed
Receiver Sensitivity	54Mbps: Typical -72dBm @ 10% PER (Packet Error Rate) 11Mbps: Typical -83dBm @ 8% PER (Packet Error Rate) 1Mbps: Typical -94dBm @ 8% PER (Packet Error Rate)
Frequency Range	2400 ~ 2483.5 MHz ISM band for Europe, USA and Taiwan 2400 ~2484 MHz ISM band for Japan
Modulation Schemes	BPSK/QPSK/CCK/OFDM
Channels	1 ~ 11 channels (FCC, Taiwan and Canada) 1 ~ 13 channels (ETSI) 1 ~ 14 channels (Japan)
Media Access Protocol	CSMA/CA with ACK
Security	64/128-bits WEP Encryption WPA, WPA2, WPA-PSK, WPA2-PSK
Antenna	Support two IPEX compatible antenna connectors with diversity. PIFA, 1.08dBi

### Physical and Environmental

Driver Support	Windows 98se, Windows 2000, Windows ME, Windows XP
Continuous Current Consumption	350mA typ. for receive mode, 450mA typ. for transmit mode
Temperature	Operating: 0° ~ 40° C, Storage: -10° ~ 70° C
Humidity	10% ~ 95% RH, no condensation
Dimensions	30 x 50.95 mm (W x H)

Certifications	FCC Part 15.247 for US, ETS 300 328 for Europe, LP0002 for Taiwan, RSS-210 for Canada
----------------	---