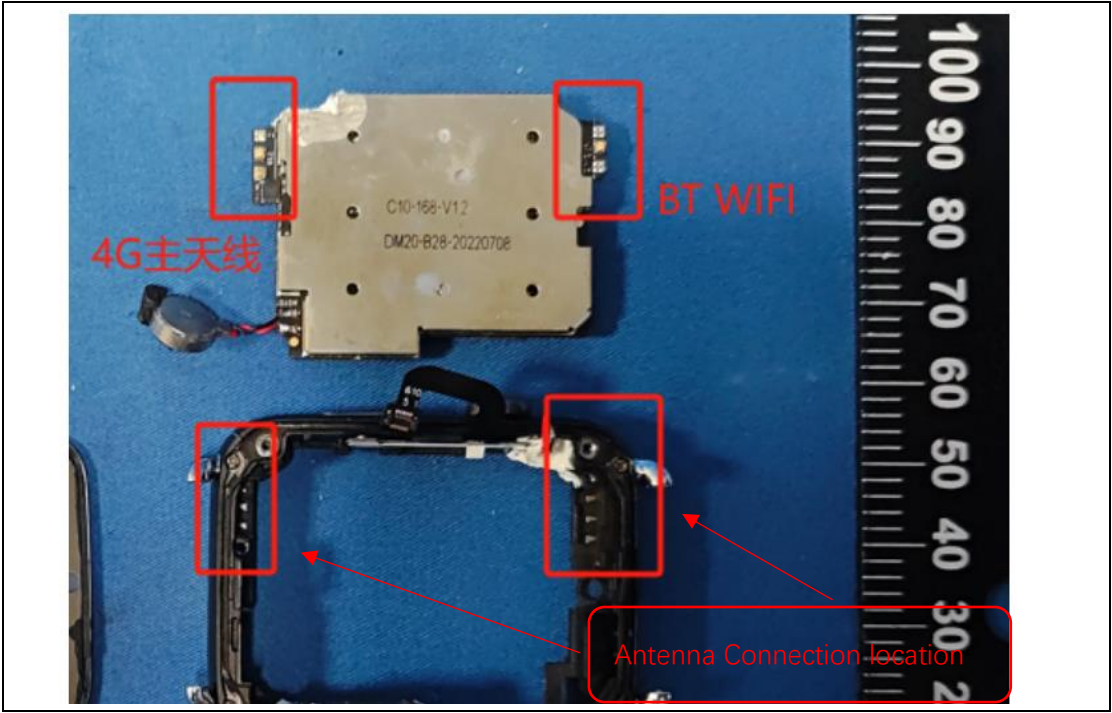


# 1. Antenna Description:

Antenna type	Internal antenna
Model	LEM10
Frequency range	2400-2500MHz, 5180-5240MHz, 5745-5825MHz
Manufacturer	SHENZHEN WAYFOR WARD ELECTRONIC CO.,LTD
Address	2nd floor, A13 building, qinghu guigudingli park, daheroad, longhua district, shenzhen, 518000 China
ANT Peak Gain	2400-2500MHz: 0.85 dBi 5180-5240MHz: 0.92 dBi 5745-5825MHz: 0.98 dBi

# 2. Antenna Photo:





### 3. Test Equipment & Conditions

#### 3.1 Test instrument

VSWR is tested using Agilent E5071B connected to a hand mechanism, and the status is free space.

#### 3.2 Test environment and methods

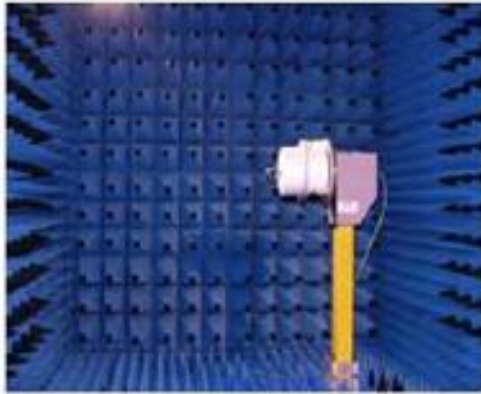
Dark room specifications: ETS-743

TD-SCDMA test equipment: StarPoint SP6010/Agilent 8960

LTE-TDD/FDD-SCDMA test equipment: StarPoint SP8011/CMW500

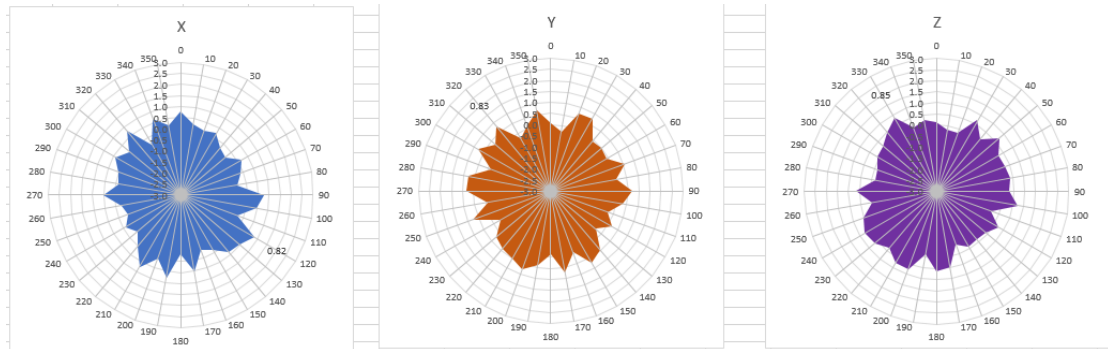
WCDMA/GSM/CDMA test equipment: Agilent 8960

Passive efficiency testing equipment: Agilent Technologies E5071B

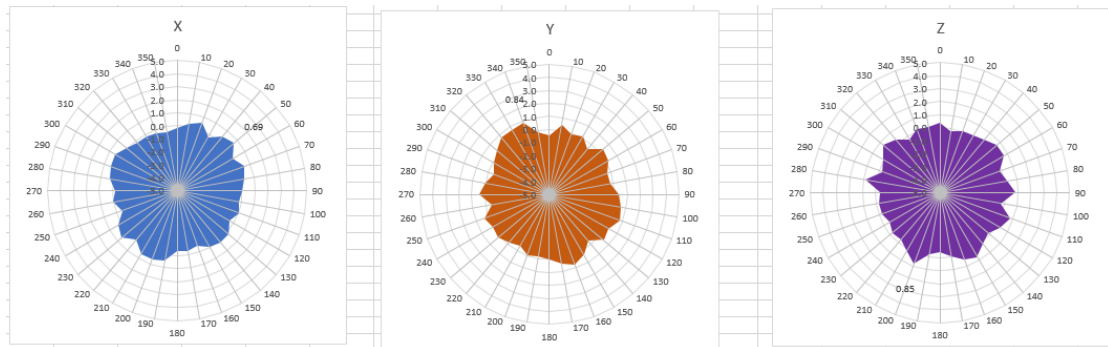


## 4 . Antenna Radiation Pattern

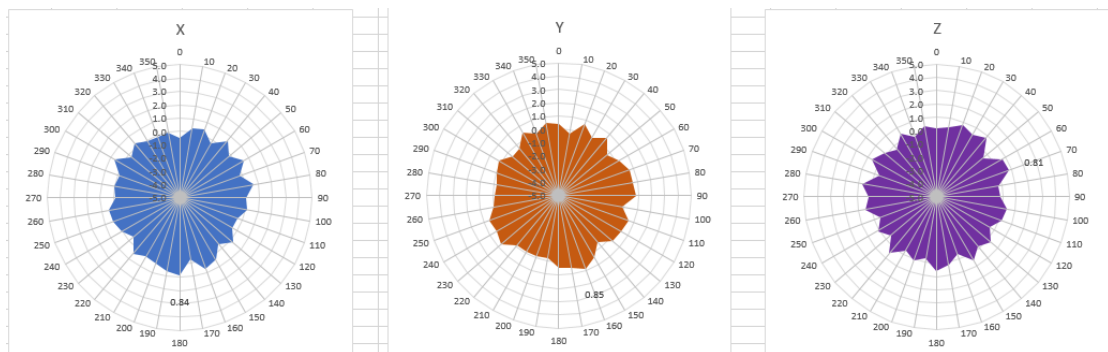
2400MHz



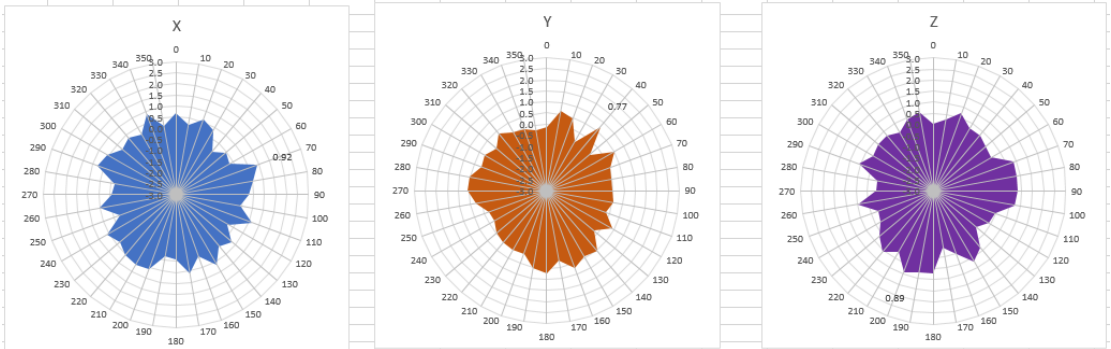
2450MHz



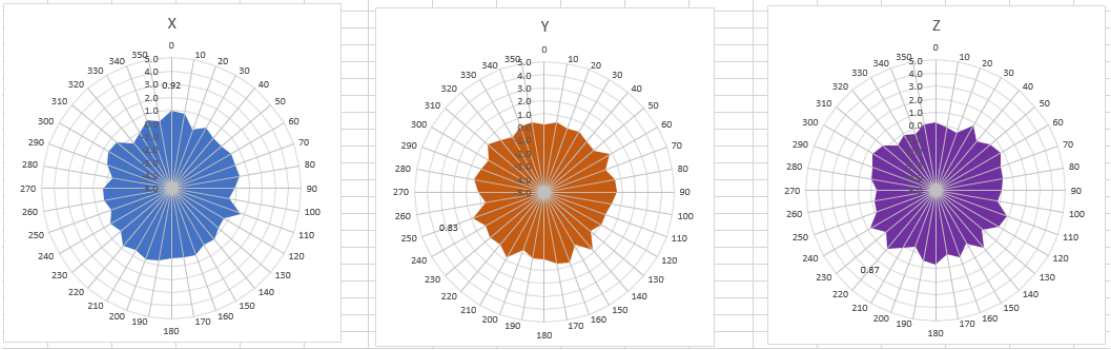
2500MHz



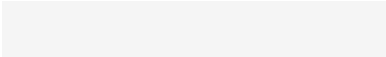
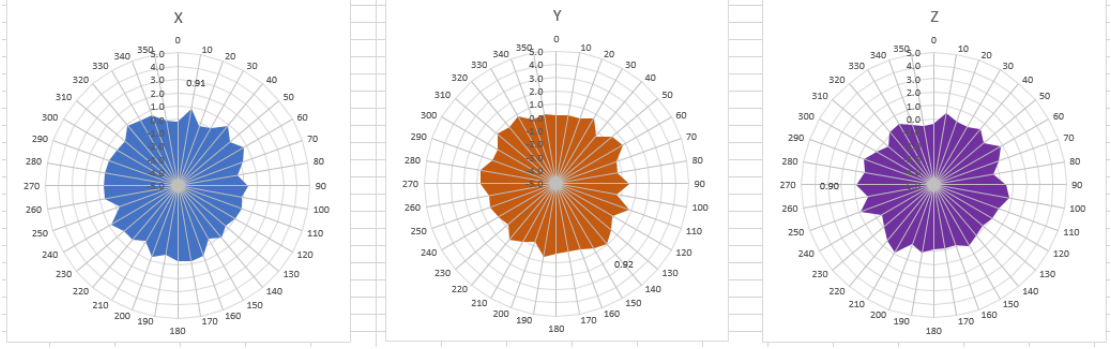
5180MHz



5220MHz

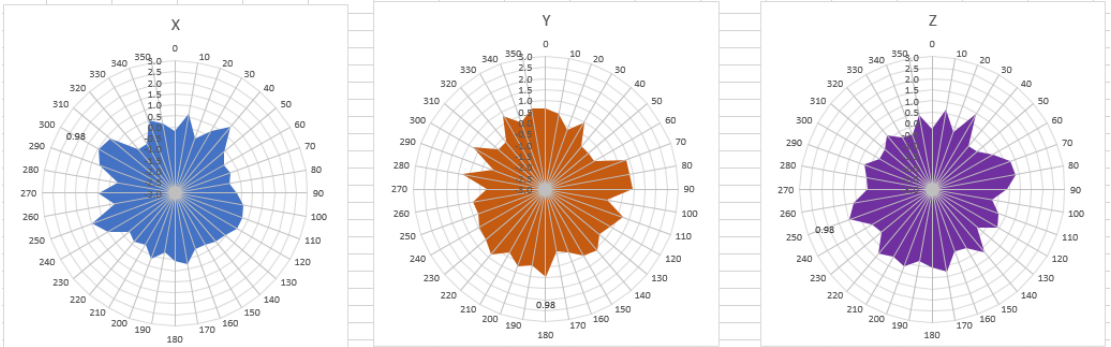


5240MHz

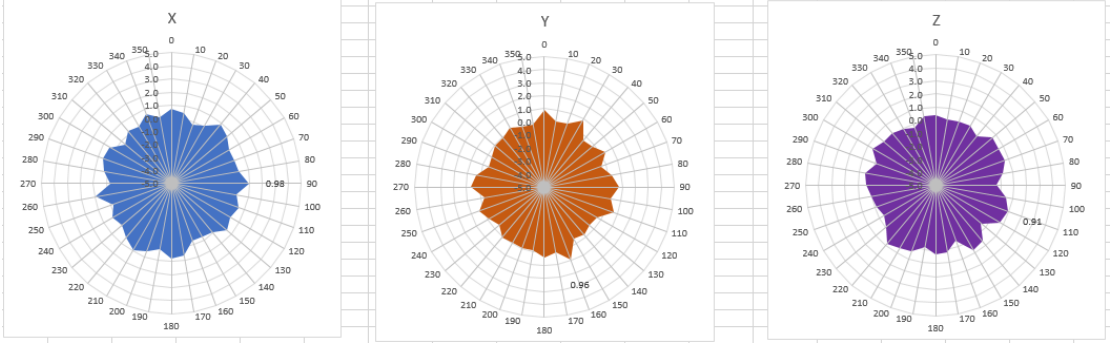




5745MHz



5785MHz



5825MHz

