

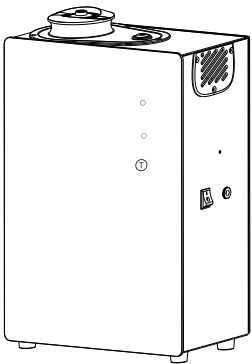
PRODUCT MANUAL

PMN:Aroma Diffuser

HVIN: NC600

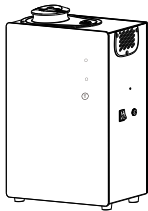


If the QR code cannot be scanned, please search for "Scent Marketing" in Google play or APP store.

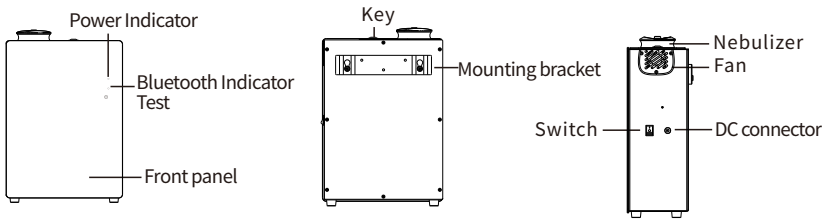


01 Specification

[Model]	NC600
[Size]	367*251*133mm
[Bottle]	1000ml
[Input]	12V = 2A
[Power]	12W
[Coverage]	830m³/2500m³/88000ft³
[N.W.]	2.13kg
[Material]	metal



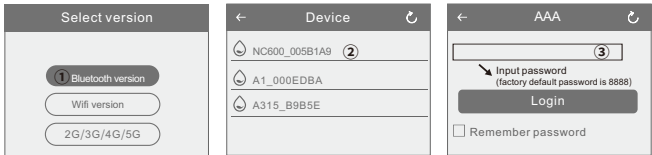
PTFE tape: 1. Tie up/ twine the atomized core when change a new one to machine;
2. Twine connector screwing to machine.



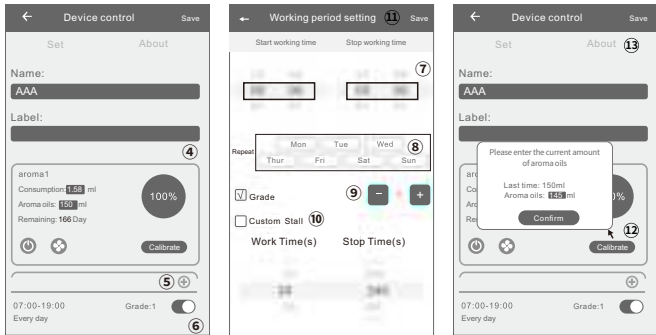
02 Bluetooth instruction

Where to get the app:
Please search for "Scent Marketing" in Google play or APP store.

Note:
Make sure that the location function of Bluetooth and mobile phone is enabled.



1. Open the scent marketing app and select Bluetooth.
2. Select your device.
3. Enter the default password 8888 and press Login.



4. On the Device Control page; You can change your device name and label information of your scent diffuser.
NOTE: Press the "Save" button at the top right corner of the screen after each change.
5. Different schedules by pressing the "+" button. To delete a schedule, swipe left.
6. Press the toggle button to turn on/off any schedule.
7. On the "Working period setting" page, Set the hours of the day you want your diffuser to run by scrolling the "Start working time" and "Stop working time".
8. Select the days of the week you want your diffuser to run (all days are pre-selected).
9. Press "+" or "-" to increase or decrease the preset intensity grades (1-20. See chart for details).
10. Check (✓) the Custom box to create a custom intensity and scroll the "Spray Time" and "Pause Time".
11. Press the "Save" button to update the Settings.
12. Tap "Calibrate" to calibrate consumption. It is advised to calibrate after working for at least 10 days. Please measure the remaining oil of the bottle first before starting calibrating. Enter the current essential oil volume, then click "Confirm" to update the consumption and remaining days automatically.
13. Change the default password by pressing on the "About" tab, in the "Device control".
14. Press the "Password Change" to access the password change page.
15. Enter a new four-digit password, then click "Confirm".

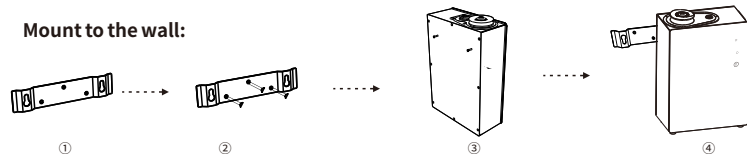
If you forget the password, please press the reset button to restore the factory setting. The factory settings password is 8888.

03 Installation method



- 1.Insert the key;
- 2.Rotate the key clockwise to unlock;
3. Unscrew and take out the atomized head then fill with fragrance;
4. Insert the atomized head and bottle;
- 5.Take out the key.

Mount to the wall:



1. Align the bracket and drill holes in the wall;
2. Press the expansion tubes into the wall holes, and wall mount the bracket with screws;
3. Screw in the back of the machine;
4. Attach the machine to the bracket.

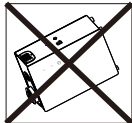
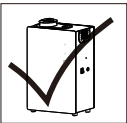
04 Concentration and Consumption

Grade	Work time(s)	Stop time(s)	Consumption(g/h)
G1	15s	300s	0.2
G2	15s	150s	0.4
G3	20s	120s	0.6
G4	20s	85s	0.8
G5	25s	80s	1.0
G6	30s	75s	1.4
G7	30s	60s	1.7
G8	30s	50s	2.0
G9	30s	40s	2.4
G10	30s	33s	2.7
G11	33s	30s	3.0
G12	40s	30s	3.2
G13	50s	30s	3.5
G14	60s	30s	3.7
G15	75s	30s	3.9
G16	80s	25s	4.2
G17	85s	20s	4.5
G18	120s	20s	4.7
G19	150s	15s	4.8
G20	300s	15s	5.0
Customize	5-500s	5-500s	---

Note: 1. The above data is for reference only. Actual oil consumption may vary if customers use essential oils with different viscosities;
2. For the best diffusion effect, it's recommended to use essential oils with a viscosity below 30mPa.s. And the optimal working temperature is 25°C.

05 ⚠ Warning

- After installation, please keep the machine vertical, tilting or laying the machine flat will cause oil leakage and damage to the machine.
- Do not refit, disassemble or repair the machine if you are not technician. If the machine breaks down, please contact our technicians for help.
- It is invalid to touch/tap button when machine is under lock status.
- If the machine programs crashes or other abnormal condition occurs, please restart the machine to restore factory setting (method: press ENT key about 5 minutes until you hear "beep" sound)



06 Troubleshooting

Before asking to have the machine repaired, please use the chart below to diagnose the problem and solution.

Symptom	Remedy
Dose not diffuse	- Check if the power is ON or OFF; - If the machine is in "not working period", it stops diffuse; - The pump is damaged, change a new one.
Spray little	- Atomized nozzle may be blocked, diffuse with alcohol to do cleaning; - Pump is aging, change a new one.
Spray liquid	- Atomized nozzle is damaged, change a new one; - Machine is tilted or lay flat, please make it stand on end.
Oil spill	- Bottle is loose, screw it to the right place.
Abnormal sound	- Pump is loose or damaged, Tighten the pump or replace.
No display on screen	- Make sure the power is ON; - Check the plug for damage, Try another outlet, If plug is damaged replace; - Display screen is damaged, Replace.

07 Equipment cleaning

The machine needs to be cleaned when below situations happen:

1. You're about to change to another kind of essential oil.
2. The atomization volume becomes weak.
3. We recommend cleaning machine by diffusing isopropyl alcohol once a month.

Cleaning steps:

1. Remove fragrance bottle and atomizing head
2. Fill 1/8 of the fragrance bottle with industrial alcohol (isopropyl alcohol)
3. Re-attach atomizing head to fragrance bottle and diffuse for 2-3 minutes.
4. Air out the fragrance bottle and the atomizing head.

FCC Caution:

This device complies with part 15 of the FCC Rules. Operation is subject to the following two conditions: (1) this device may not cause harmful interference, and (2) this device must accept any interference received, including interference that may cause undesired operation.

Any changes or modifications not expressly approved by the party responsible for compliance could void the user's authority to operate the equipment.

NOTE: This equipment has been tested and found to comply with the limits for a Class B digital device, pursuant to Part 15 of the FCC Rules. These limits are designed to provide reasonable protection against harmful interference in a residential installation. This equipment generates, uses and can radiate radio frequency energy and, if not installed and used in accordance with the instructions, may cause harmful interference to radio communications. However, there is no guarantee that interference will not occur in a particular installation.

If this equipment does cause harmful interference to radio or television reception, which can be determined by turning the equipment off and on, the user is encouraged to try to correct the interference by one or more of the following measures:

- Reorient or relocate the receiving antenna.
- Increase the separation between the equipment and receiver.
- Connect the equipment into an outlet on a circuit different from that to which the receiver is connected.
- Consult the dealer or an experienced radio/TV technician for help.

To maintain compliance with FCC's RF Exposure guidelines, This equipment should be installed and operated with minimum distance between 20cm the radiator your body: Use only the supplied antenna.

ISED Statement

English: This device contains licence-exempt transmitter(s)/receiver(s) that comply with Innovation, Science and Economic Development Canada's licence-exempt RSS(s). Operation is subject to the following two conditions:

- (1) This device may not cause interference.
- (2) This device must accept any interference, including interference that may cause undesired operation of the device.

The digital apparatus complies with Canadian CAN ICES-3 (B)/NMB-3(B).

French: Cet appareil contient des émetteurs/récepteurs exempts de licence qui sont conformes aux RSS exempts de licence d'Innovation, Sciences et Développement économique Canada.

L'exploitation est soumise aux deux conditions suivantes :

- (1) Cet appareil ne doit pas provoquer d'interférences.
- (2) Cet appareil doit accepter toute interférence, y compris les interférences susceptibles de provoquer un fonctionnement indésirable de l'appareil.

L'appareil numérique conforme canadien peut - 3 (b) / nmb - 3 (b).

This device meets the exemption from the routine evaluation limits in section 2.5 of RSS 102 and compliance with RSS 102 RF exposure, users can obtain Canadian information on RF exposure and compliance.

cet appareil est conforme à l'exemption des limites d'évaluation courante dans la section 2.5 du cnr - 102 et conformité avec rss 102 de l'exposition aux rf, les utilisateurs peuvent obtenir des données canadiennes sur l'exposition aux champs rf et la conformité.

This equipment complies with Canada radiation exposure limits set forth for an uncontrolled environment.

Cet équipement est conforme aux limites d'exposition aux rayonnements du Canada établies pour un environnement non contrôlé.

This equipment should be installed and operated with minimum distance 20cm between the radiator & your body.

Cet équipement doit être installé et utilisé à une distance minimale de 20 cm entre le radiateur et votre corps.