

Detector of Carbon Monoxide User Manual

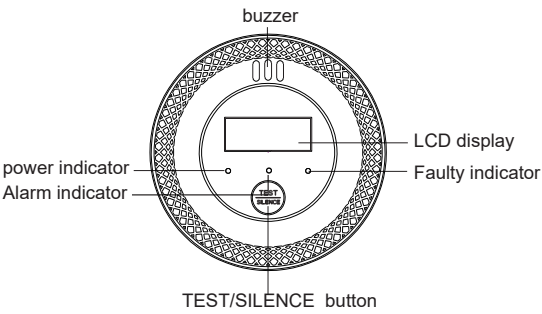
Mdel Type: PG C06

Thanks for choosing our CO detector,we're devoted to providing quality and reliable security products. Read the manual before use and keep it for future reference (product images subject to change without prior notice).

I.OVERVIEW

1.Introduction This is a highly reliable standalone carbon monoxide detector(CO detector,in short) for detection of carbon monoxide,adopting high performance electrochemical CO sensor,featuring high reliability, low power consumption and low variation on sensitivity.It uses back-lit LCD to display alarm density and 2x AA battery as power source with special mechanism to prevent improper battery installation. It's widely used in kitchens, bathrooms, living rooms, garages and spaces without fine air ventilation.

2.Product Image



3.Working Status

Working Status	Display	Indicator	Buzzer
Power On	Countdown from 10 to 0	Power indicator, alarm indicator, fault indicator, life indicator flashes simultaneously.	Mute
Monitoring	No display	Power indicator flashes once per minute.	Mute
Test	888 displays	Power indicator, alarm indicator, fault indicator, life indicator flashes simultaneously.	Sound: Di Di Di Di
Alarm	CO density displays	Alarm indicator flashes,	Sound: Di Di Di
Lower Voltage	No display	Fault indicator flashes once every 1 minutes	Sound: Di every 1 minutes
Life Over	No display	Fault indicator flashes 3 times every 1minutes	Sound:Di-Di every 1 minutes
Out of range	500	Alarm indicator flashes	Sound: Di Di Di

4.Operations

1) Power On: once powered on,power indicator, alarm indicator, fault indicator, life indicator flashes once simultaneously. LCD turns On, displays 888ppm before the countdown of 10 to 0 as preheating. Power indicator, alarm indicator, fault indicator, life indicator flashes simultaneously, detector then enters monitoring status.  
2) Monitoring: power indicator flashes once per minute.  
3) Alarm: LCD displays the CO density. Alarm indicator flashes, buzzer sounds Di Di Di.  
4)Low Voltage: when the battery is under low voltage,fault indicator flashes once and buzzer sounds Di every 3 minutes.  
5)Out of range: when density detected exceeds the maximum range, LCD displays 500, RED alarm indicator flashes and buzzer sounds Di Di Di.

5.TEST/MUTE button

1) Auto Test: press TEST button,power indicator, alarm indicator, fault indicator, life indicator flashes 4 times simultaneously,buzzer sounds Di Di Di Di. Meanwhile, LCD turns On and displays 888. Press and hold TEST button,buzzer sounds Di Di Di Di periodically, at a sound lever of over 85dB @3m.  
2) MUTE again Alarm: press MUTE button to mute the detector when CO density is below 300ppm,mute status lasts 10mins. Mute function disabled when CO density is over 300ppm.  
3) MUTE against Fault: in fault status, press TEST button to mute the detector(Fault indicator still flashes).Mute status lasts 12±1hrs and Fault status resumes unless otherwise it's solved.  
⚠ Warning: ensure the safety before you use MUTE function.

6.Specification

Working Voltage: DC 3V  
Standby Current: <10uA  
Alarm Current: <20mA  
Detection Range: 0~500ppm  
Alarm Output: Acoustic and light  
Sound Level: 85db@3m  
Sensor Lifespan: 3 years  
Temperature Range: -10 C~55 C  
Humidity Range: Max. 95%RH  
Installation: wall mounting  
In Accordance with: EN50291-1:2018  
Dimensions: Φ 89\*28mm  
Weight: About 68g(ex.battery)

7.Features

- 1) Smart detector
- 2) Electrochemical sensor
- 3) Mute function
- 4) Low voltage alert
- 5) SMT processes for better performance
- 6) Back-lit LCD display

II.INSTALLATION

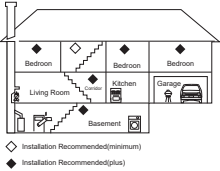
1. Spaces recommended

1-floor building

- 1) 1pcs minimum for each bedroom.
- 2) 1pcs within 6m range of combustion chimneys and gas appliances for additional safety.

Multi-floor building (refer to figure on the right)

- 1) 1pcs minimum for each bedroom.
- 2) 1pcs on the top of basement.
- 3) 1pcs within 6m range of combustion chimneys and gas appliances for additional safety.



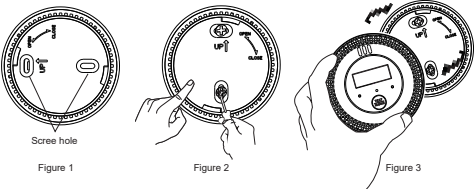
2. Attention

- 1)Install the CO detector in bedroom and living space or places prone to CO leakage.It's recommended that one detector installed on each floor for multi-floor buildings.Ensure you can hear the alarm even when you're asleep.

If the CO detector is placed where temperature is below 0 C or above 40 C for over 30mins,place it in room temperature for 12hrs at least before use.  
2)To keep the CO detector operational and prevent false alarm, never install it in garage, kitchen or furnace where CO in high density could happen temporarily. If it's a must to install in kitchen, be sure to install it at a proper distance from possible gas leak sources like heater,or places with much dirt, dust,grease or household chemical agents which could harm the sensor and cause malfunction.  
3)Warning: installation by professionals only.  
4)Reminder: install batteries before you install the detector, or it can't attach to the bracket. Pay attention to '+/-'ends.

3. Installation steps

- 1) Install batteries into battery compartment.
- 2)Either wall installation or ceiling installation(for limited space).
- 3) Draw a line of 4in (10cm) either horizontally or vertically.
- 4)For the 2 longest holes on the bracket,align them with the line, mark the center of each hole(Figure1) on the surface.Pay attention to UP arrow in wall installation.
- 5)Drill a hole on each of the markings,insert the expansion tube and knock it into the wall flush. Keep the detector away from dust when drilling.
- 6)Screw the rear plate into the wall with the screws included (Figure2).
- 7)Align the detector with the rear plate through the 2 holes,and twist clockwise to fix it(Figure3).



4. Battery installation & replacement

Twist the detector anticlockwise to take it off the rear plate. Put 2x AA battery into battery compartment,indicators and LCD turn ON.Then install the detector back onto the rear plate. Attention: dispose the used batteries properly.

III.MAINTENANCE

1.Troubleshooting

- 1)YELLOW Fault indicator flashes once and buzzer sounds Di every 1 mins, or when all indicators and buzzer stop working, replace the batteries.
- 2)YELLOW Fault indicator flashes twice and buzzer sounds Di Di every 60s.Sensor malfunction,contact the distributor for maintenance.
- 3).Press TEST with no response, check if batteries are installed properly or contact the distributor for maintenance.

2.Attention

- 1)This CO detector can't detect natural gas(methane),butane, propane or other combustible gas.
- 2)Detector is operational only when sufficiently powered.

- 3)Perform periodic maintenance.
- 4)Clean the detector with soft brush or vacuum cleaner monthly.
- 5)Never use cleaning agents to clean,to prevent damage to the detector.
- 6)Never spray hair gel, paint etc close to the detector.
- 7)Have the detector tested by professionals half a year,repair or replace before the sensor service life ends.
- 8)This detector is used to reduce the chances of accidents,but in no way can it eliminate it.Keep safety in mind even if you've already installed it.

3.Alarm triggering thresholds

CO Density	Alarm Response Time
27ppm	no response after 120mins
55ppm	alarm within 60~90mins
110ppm	alarm within 10~40mins
330ppm	alarm within 3mins

4.Warning!

- 1)Never dismantle the detector
- 2)Avoid high pressure or impact onto the detector.
- 3)It does not work as a smoke detector.
- 4)Keep it away from moisture.
- 5)Keep it away from the reach of children.
- 6)Keep it away from high voltage and strong magnetic field.

IV. IN THE PACKAGE

- 1.CO detector
- 2.rear plate
- 3.user manual
- 4.AA battery x2
- 5.screw x2
- 6.expansion tube x2

Date: 2024.6.4

产品型号	PG-C06 (三个灯)	部件名称	独立款英文说明书
设计		材料	80g书写纸 (正反印)
品号			
工艺	K	成品尺寸	80*100mm

注: 印刷尺寸: 320\*100mm, 风琴折

**FCC Caution:**

This device complies with part 15 of the FCC Rules.

Operation is subject to the following two conditions: (1) this device may not cause harmful interference, and (2) this device must accept any interference received, including interference that may cause undesired operation.

Any changes or modifications not expressly approved by the party responsible for compliance could void the user's authority to operate the equipment.

NOTE: This equipment has been tested and found to comply with the limits for a Class B digital device, pursuant to Part 15 of the FCC Rules. These limits are designed to provide reasonable protection against harmful interference in a residential installation. This equipment generates, uses and can radiate radio frequency energy and, if not installed and used in accordance with the instructions, may cause harmful interference to radio communications. However, there is no guarantee that interference will not occur in a particular installation.

If this equipment does cause harmful interference to radio or television reception, which can be determined by turning the equipment off and on, the user is encouraged to try to correct the interference by one or more of the following measures:

-- Reorient or relocate the receiving antenna.

-- Increase the separation between the equipment and receiver.

-- Connect the equipment into an outlet on a circuit different from that to which the receiver is connected.

-- Consult the dealer or an experienced radio/TV technician for help.

To maintain compliance with FCC's RF Exposure guidelines, This equipment should be installed and operated with minimum distance between 20cm the radiator your body:  
Use only the supplied antenna.

FCC ID:2AIT9-PG-C06