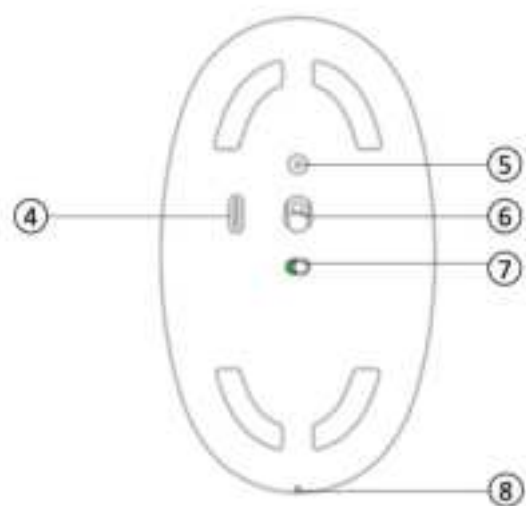
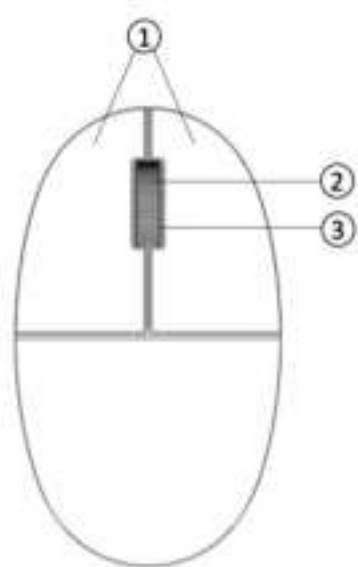




LD149 MUSO

Design by Manuela Simonelli & Andrea Quaglio

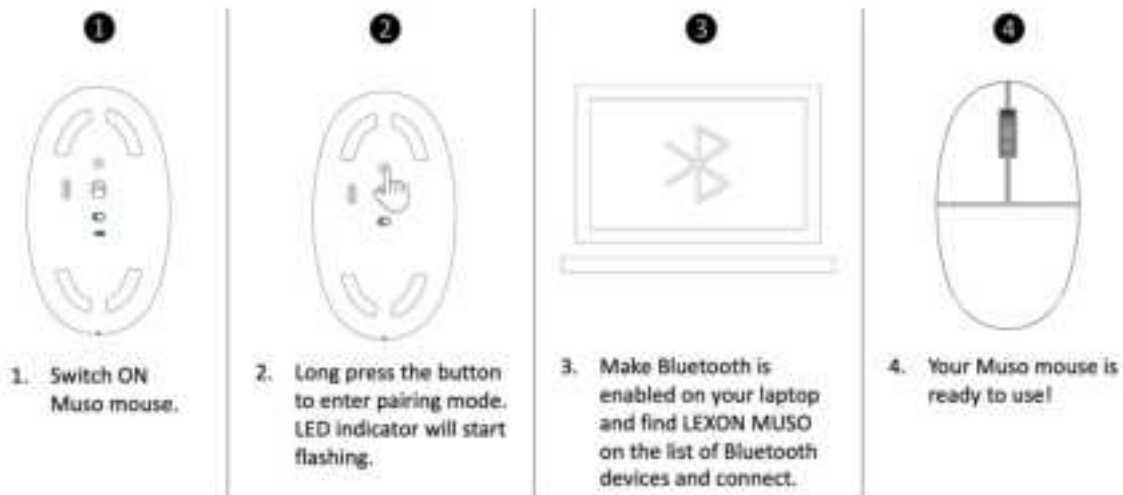


English

Product overview

1. Left and right mouse buttons
2. Scroll wheel
3. Low battery LED indicator
4. USB-C charging port
5. Bluetooth pairing button
6. Optical sensor lens
7. On/Off slider switch
8. Charging LED

First setup



Product specifications

Material: Synthetic leather / Aluminum / ABS

Weight: 85 g

Dimensions: 11.5 x 6.6 x 3.1 cm

Sensor technology: Smooth optical sensor

DPI (Min/Max): +/- 1200

Number of buttons: 3 (Left/Middle/Right)

Scroll Wheel: Yes, 3D

Battery life: Up to 6 months, depending on use

Connection type: Bluetooth

Wireless range: 33ft (10m)

Connect / Power: Yes, ON/OFF switch

Compatibility: macOS 10.10 or later / Windows® 10,11 or later / ChromeOS / Linux®

EUROPEAN UNION CE DIRECTIVE

This device in compliance with the essential requirements and other relevant provisions of Directive 2014/53/EU. All essential radio test suites have been carried out. This restriction will be applied to all Member States of European Union.

The device has been evaluated to meet general RF exposure requirements. The device can be used in portable exposure conditions without restriction.

Declaration of Conformity

Hereby, LEXON declares that the product type LD149 is in compliance with Directives 2014/53/EU & 2011/65/EU. The full text of the EU declaration of conformity is available at the following internet address:

<https://www.lexon-design.com/assets/certifications-ce-luma.pdf>

UK CONFORMITY ASSESSMENT

The device is in compliance with the essential requirements and other relevant provisions of the UK Radio Equipment Regulations SI 2017:1206 (as amended).

The device has been evaluated to meet general RF exposure requirements. The device can be used in portable exposure conditions without restriction.

Declaration of Conformity:

Hereby, LEXON declares that the product LD149 is in compliance with the following Regulations: Radio Equipment Regulations 2017, Electrical Equipment (Safety) Regulations 2016 and The Restriction of the Use of Certain Hazardous Substances in

Electrical and Electrical Equipment 2012. The Full test of the UK declaration of conformity is available at the following internet address: <https://www.lexon-design.com/assets/certifications-ce-luma.pdf>

WPT:

RX Frequency Range: 110-148 KHz

Bluetooth:

Transmitter power: 8.12dBm(for EU/UK only)

TX/RX Frequency Range: 2400-2480MHz

DISPOSAL AND RECYCLING INFORMATION

After the implementation of the European Directive 2012/19/EU in the national legal system, the following applies: electrical and electronic devices may not be disposed of with domestic waste. Consumers are obliged by law to return electrical and electronic device at the end of their service lives to the public collecting points set up for this purpose or point of sale. Details to this are defined by the national law of the respective country. This symbol on the product, the instruction manual or the package indicates that a product is subject to these regulations. By recycling, reusing the materials or other forms of utilizing old devices, you are making an important contribution to protecting our environment.

USA - FCC STATEMENT

This device complies with part 15 of the FCC Rules.

Operation is subject to the following two conditions:

- (1) This device may not cause harmful interference, and
- (2) this device must accept any interference received, including interference that may cause undesired operation. Notice: Any changes or modifications not expressly approved by the party responsible for compliance could void your authority to operate the equipment.

NOTE: This equipment has been tested and found to comply with the limits for a Class B digital device, pursuant to part 15 of the FCC Rules. These limits are designed to provide reasonable protection against harmful interference in a residential installation.

This equipment generates, uses and can radiate radio frequency energy and, if not installed and used in accordance with the instructions, may cause harmful interference to radio communications. However, there is no guarantee that interference will not occur in a particular installation. If this equipment does cause harmful interference to radio or television reception, which can be determined by turning the equipment off and on, the user is encouraged to try to correct the interference by one or more of the following measures:

- Reorient or relocate the receiving antenna.
- Increase the separation between the equipment and receiver.
- Connect the equipment into an outlet on a circuit different from that to which the receiver is connected.
- Consult the dealer or an experienced radio/ TV technician for help.

RF exposure statements

The device has been evaluated to meet general RF exposure requirement. The device can be used in portable exposure condition without restriction.

CANADIAN COMPLIANCE STATEMENT

This device complies with Industry Canada license-exempt RSSs. Operation is subject to the following two conditions:

- 1) This device may not cause interference, and
- 2) This device must accept any interference, including interference that may cause undesired operation of the device.

This Class B digital apparatus complies with Canadian ICES-003.

Le présent appareil est conforme aux CNR d'Industrie Canada applicables aux appareils radio exempts de licence.

L'exploitation est autorisée aux deux conditions suivantes :

- (1) l'appareil ne doit pas produire de brouillage, et
- (2) l'utilisateur de l'appareil doit accepter tout brouillage radioélectrique subi, même si le brouillage est susceptible d'en compromettre le fonctionnement.

This device contains licence-exempt transmitter(s)/receiver(s) that comply with Innovation, Science and Economic Development Canada's licence-exempt RSS(s). Operation is subject to the following two conditions:

This device may not cause interference.

This device must accept any interference, including interference that may cause undesired operation of the device.

RF exposure statement:

The device has been evaluated to meet general RF exposure requirement. The device can be used in portable exposure condition without restriction.

Cet appareil contient des émetteurs / récepteurs exemptés de licence conformes aux RSS (RSS) d'Innovation, Sciences et Développement économique Canada. Le fonctionnement est soumis aux deux conditions suivantes:

Cet appareil ne doit pas causer d'interférences.

Cet appareil doit accepter toutes les interférences, y compris celles susceptibles de provoquer un fonctionnement indésirable de l'appareil.

Déclaration d'exposition RF:

L'appareil a été évalué pour répondre aux exigences générales d'exposition aux RF. L'appareil peut être utilisé dans des conditions d'exposition portable sans restriction.



LEXON®

125, Avenue des Champs-Élysées - 75008 Paris - FRANCE

All brands or product names are or may be trademarks or their respective owners.

Pictures and specifications are not contractual, Assembled in China.

lexon-design.com | @lexondesign