

Brookstone®

Brookstone® trademark, name and logos are trademarks of BKST Brand Holdings LLC and used under license.

Dongguan fushilin technology company limited

Model No.: BSTWS20

Brookstone®

TOUCHPOWER

True Wireless Earbuds
& Smart Powerbank Case



TABLE OF CONTENTS

Compliance Information..... 1

Before You Begin...

 Additional Warnings..... 3

 In the Box..... 3

 Location of Controls..... 4

Getting Started

 Charging the Case..... 5

 Charging the Earbuds..... 5

 Powering ON/OFF..... 6

 Bluetooth Pairing..... 7

 Playing Music..... 8

 Controlling Playback..... 8

 Adjusting the Volume..... 8

 Phone Calls..... 8

 Using the USB Output Port..... 9

 Activating Siri®..... 9

 Storage & Maintenance..... 9

Importer Information..... 10

Printed in China
v2. 01-2022

All product names, trademarks, and registered trademarks are property of their respective owners. All company, product, and service names used in this document are for identification purposes only. Use of these names, trademarks, and brands does not imply endorsement.

The Bluetooth® word mark and logos are registered trademarks owned by Bluetooth SIG, Inc., used under license.

FCC Information

This device complies with Part 15 of the FCC Rules.

Caution: Any changes or modifications not expressly approved could void the user's authority to operate the equipment.

Note: This equipment has been tested and found to comply with the limits for a Class B digital device, pursuant to part 15 of the FCC Rules. These limits are designed to provide reasonable protection against harmful interference in a residential installation. This equipment generates, uses and can radiate radio frequency energy and, if not installed and used in accordance with the instructions, may cause harmful interference to radio communications. However, there is no guarantee that interference will not occur in a particular installation. If this equipment does cause harmful interference to radio or television reception, which can be determined by turning the equipment off and on, the user is encouraged to try to correct the interference by one or more of the following measures:

- Reorient or relocate the receiving antenna.
- Increase the separation between the equipment and receiver.
- Connect the equipment into an outlet on a circuit different from that to which the receiver is connected.
- Consult the dealer or an experienced radio/TV technician for help.

This device complies with Part 15 of the FCC Rules. Operation is subject to the following two conditions: (1) This device may not cause harmful interference, and (2) this device must accept any interference received, including interference that may cause undesired operation.

Radiation Exposure Information

This device has been evaluated to meet general RF exposure requirements. The device can be used in portable exposure conditions without restriction.

LITHIUM POLYMER BATTERY WARNINGS

This device contains a non-removable Lithium-Polymer battery. The battery must be recycled or disposed of properly. Contact your local waste management office for information on battery recycling or disposal.



Rating Label Definitions

--- Direct current symbol.

This symbol signifies the product must not be discarded as household waste, and should be delivered to an appropriate collection facility for recycling. Proper disposal and recycling helps protect natural resources, human health and the environment.

This symbol signifies and declares that this equipment has battery charging which complies with California CEC and energy efficiency.

This symbol signifies that this is a wireless device powered by Bluetooth® technology. The Bluetooth® word mark and logos are registered trademarks owned by Bluetooth SIG, Inc., used under license.

This symbol represents FCC Declaration of Conformity and compliance.

Información del importador

MARCA: Brookstone MODELO: BSTWS20

Favor de leer la siguiente información antes de usar el aparato.
"La operación de este equipo está sujeta a las siguientes dos condiciones"
1. Es posible que este equipo o dispositivo no cause interferencia perjudicial.
2. Este equipo o dispositivo debe aceptar cualquier interferencia. Incluyendo la que pueda causar su operación no deseada.

El aparato no debe quedar expuesto a goteo o salpicaduras por líquidos.

CARACTERISTICAS ELECTRICAS

VOLTAJE 3.7V
UTILIZA 1 BATERIA TIPO RECARGABLE C/U

IMPORTADOR: COPPEL SA DE CV
DOMICILIO: REPUBLICA PTE 2855
RECURSOS HIDRAULICOS CULIACAN ROSALES
CULIACAN SINALOA 80105

EN ARGENTINA IMPORTADO POR COPPEL S.A.

SANTIAGO DEL ESTERO 1571
TIGRE (CP 1648)
BUENOS AIRES - ARGENTINA
CUIT: 30-71041150-2

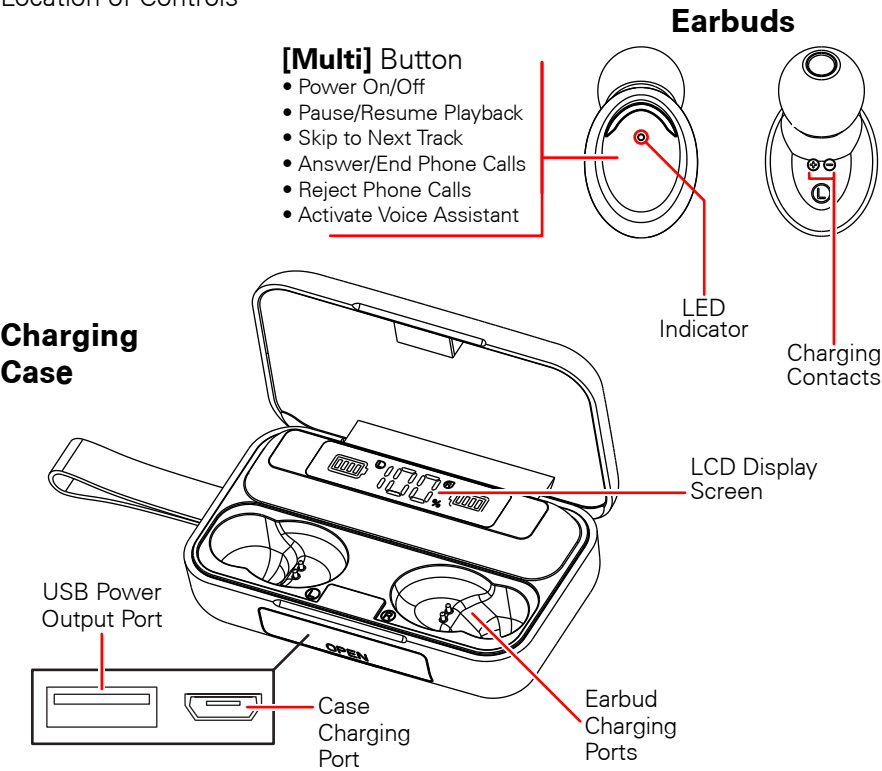
HOMOLOGACIÓN RCPBRBS22-0429

Before You Begin...
READ THIS MANUAL CAREFULLY AND SAVE FOR FUTURE REFERENCE

- To ensure safe and proper use, read all safety information before using the device. Only use with manufacturer-approved batteries, chargers, accessories, and supplies.
- **THIS DEVICE IS NOT A TOY**, do NOT allow children or pets to use or play with this device.
 - **Do not disassemble, modify, or repair the device.**
 - Do not expose the device to extreme temperatures (heat or cold), open flames, humid, or wet conditions.
 - **Do not submerge in water.**
 - Low power may cause poor Bluetooth connection or sound distortion.
 - Do not overcharge battery.
 - If using with a USB adapter, make sure the adapter is not damaged.
 - Do not allow the USB port or the connectors of the supplied USB cable to be exposed to dust, or water, or come into contact with any conductive materials such as liquids, metallic powders, etc.
 - The earbuds & charging case contain a built-in battery and should not be disposed of with regular household waste. Please consult the local authorities on the correct way to dispose of these devices.
 - **Always be aware of your surroundings when using the earbuds**
 - **Never use earbuds while driving a vehicle, riding a bicycle, or operating anything that requires your undivided attention**

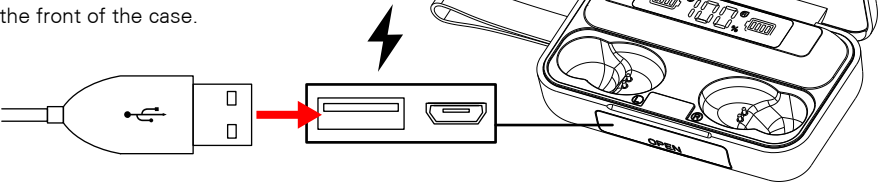
- In the Box
- BSTWS20 - True Wireless Earbuds (L & R)
 - Charging Case (x1)
 - Micro-USB Charging Cable (x1)
 - Instruction Manual (x1)

Location of Controls



Using the USB Output Port

The case can be used as a power bank to power or charge an external device. To use, plug the USB connector of your device's USB power cable into the USB Power Output Port on the front of the case.



Activating Siri®

- If you have Siri® voice assistant on your paired device, you can activate it using the controls on the earbuds or the controls on your device.
- Touch + hold either earbud's **[Multi] button for 1.5 seconds to activate Siri®.**
 - Touch + hold either earbud's **[Multi] button for 1.5 seconds to close Siri®.**

Storage & Maintenance

When not using the earbuds, it is recommended that they are stored away in the charging case and placed in a safe, dry location, away from sources of water, light, heat, and dust. They are best stored in an airtight box or bag (not included). The earbuds should be recharged every 2 weeks if they are not being used regularly.

If the earbuds or case is dirty, wipe it down with a **clean microfiber cloth**. Do not clean with water or any sort of cleaning liquid or detergent.

Playing Music

Make sure the earbuds are charged and properly connected to your Bluetooth-enabled device.

Playback, volume and phone functions can be controlled with your paired device or with the earbuds, as indicated below:

Controlling Playback

- Touch the **[Multi]** button on either earbud to pause and resume audio playback.
- **2x Touch** the **[Multi]** button on the **left** earbud to skip to the **previous** track.
- **2x Touch** the **[Multi]** button on the **right** earbud to skip to the **next** track.

Adjusting the Volume

- **3x Touch** the **[Multi]** button on the **left** earbud to skip to **decrease** volume.
- **3x Touch** the **[Multi]** button on the **right** earbud to skip to **increase** volume.

Phone Calls

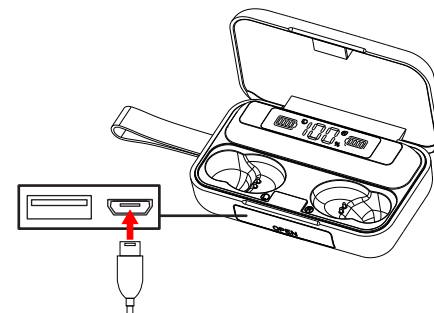
- Touch the **[Multi]** button on either earbud to **answer** an incoming phone call. Touch again to **end** the phone call.
- **Touch + hold** the **[Multi]** button on either earbud **for 2 seconds** to reject an incoming phone call.

Charging the Case

Insert the small connector of the included micro-USB charging cable into the case charging port on the front of the charging case. Insert the larger connector into the USB port on a computer, or into a **5V/1A USB adapter** (*not included*) and plug into an electrical outlet.

The LCD display screen will display the case's charging progress while the case is charging, and when it is finished charging.

The LCD display screen will also indicate the case's current battery level. Please recharge the case when the battery is low.

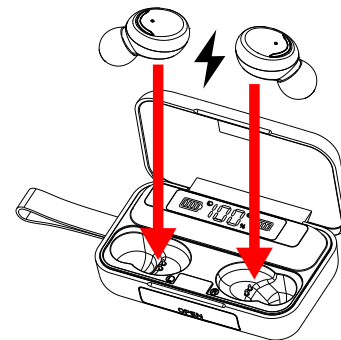


Charging the Earbuds

Use the included charging case to protect and charge your earbuds.

To charge the earbuds, open the case. Place the earbuds into the correct earbud charging ports. The earbuds will automatically power OFF and begin charging.

The LCD display screen will display the earbuds' charging progress.



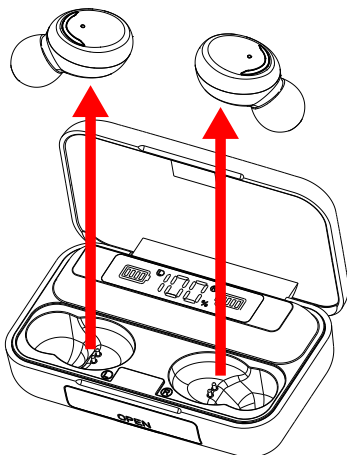
Powering On/Off

Charge the case and earbuds fully before using.

- Remove the earbuds from the case to automatically power them ON. The earbuds' LED indicators will **flash RED and BLUE**. When both earbuds are powered ON at the same time they will automatically pair to each other after a few seconds, and a tone will be heard indicating that they are connected.
- Insert the earbuds into the case to automatically power them OFF. The earbuds' LED indicators will **flash RED** when they are powered OFF.
- The earbuds can also be powered ON and OFF by **touching + holding** the earbuds' **[Multi]** buttons for **2-3 seconds**.

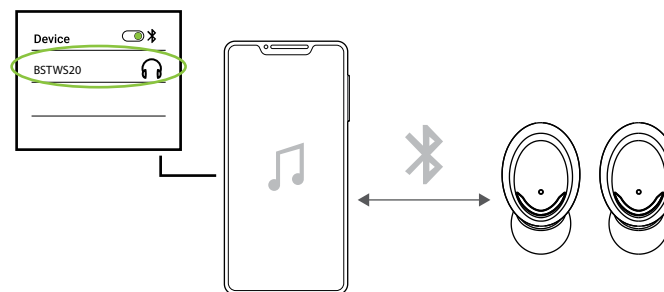
Note: The earbuds will automatically power OFF if they are not paired to a Bluetooth device after 5 minutes, or if the paired device is out of Bluetooth range (10 m / 30 ft) for 5 minutes.

Note: Either earbud can be used independently.



Bluetooth Pairing

1. Power the earbuds ON at the same time. After a few seconds, a tone should be heard, indicating that the earbuds have connected to each other, and the LED indicators on the earbuds will continue to flash RED and BLUE. **If the earbuds don't connect to each other, see the troubleshooting section at the bottom of this page.**
2. Open your device's Bluetooth menu and select **BSTWS20** when it appears.
3. Another tone will be heard, indicating that the earbuds are successfully connected to your device. The LED indicators on the earbuds will turn OFF.



Trouble Pairing the Earbuds to Each Other? Try these steps:

1. **Touch + hold** the **[Multi]** buttons on **both earbuds at the same time for 12 seconds**, until the earbuds' LED indicators **flash BLUE** one time. The earbuds will power ON.
2. You may need to go into your device's Bluetooth settings and manually **"Forget"** one or both of the earbuds, and turn your device's Bluetooth OFF while the earbuds pair to each other.
3. Turn your device's Bluetooth back ON if necessary, and follow the **Bluetooth Pairing** steps above again.