

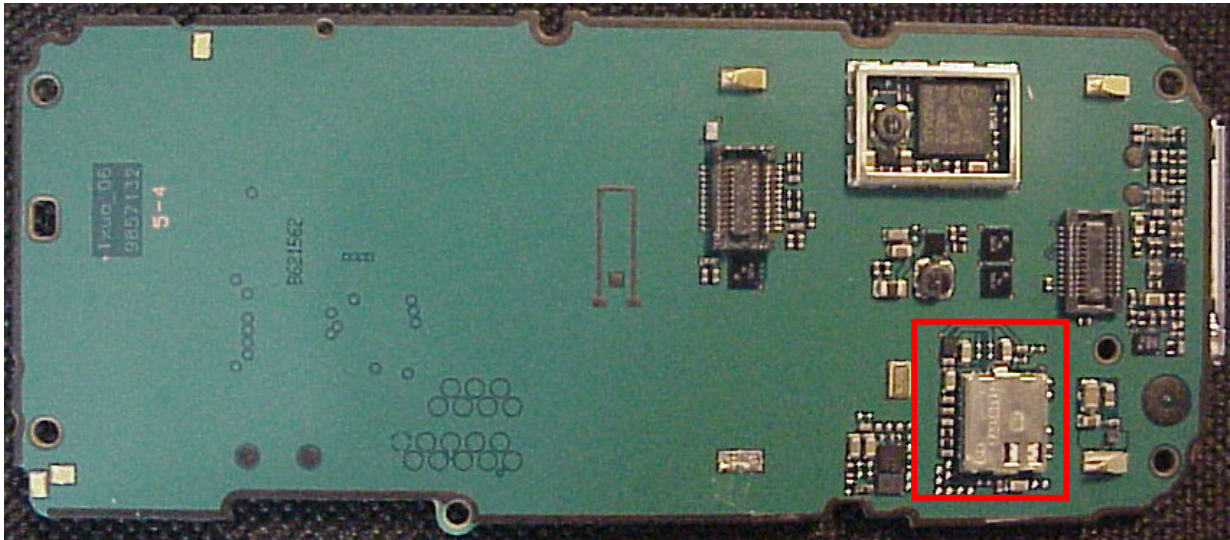
RM-200 Exhibit 9 - Product pictures

RM-200

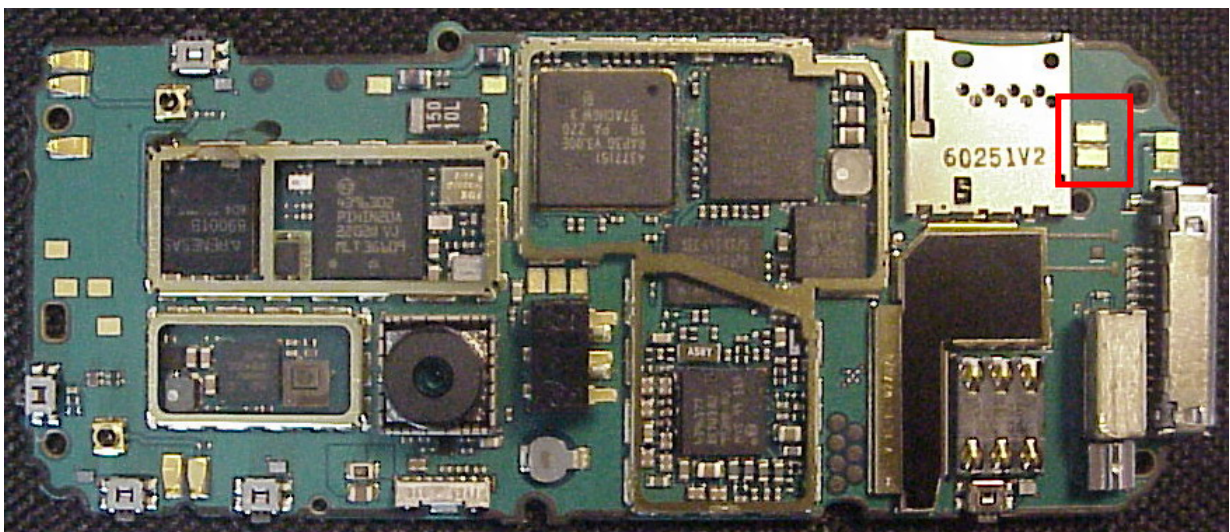
Status:	Approved v.1 29-May-06
Doc. Number:	DTX18505
Author:	Larsen Jesper
Approver:	Martin Melbye
Function:	R&D Copenhagen
Security:	Company Confidential
Filename:	RM-200 Exhibit 9 Pictures.doc
Document Location:	e.g. Notes, PCMS, etc.

Copyright © Nokia. This material, including documentation and any related computer programs, is protected by copyright controlled by Nokia. All rights are reserved. Copying, including reproducing, storing, adapting or translating, any or all of this material requires the prior written consent of Nokia. This material also contains confidential information, which may not be disclosed to others without the prior written consent of Nokia

PICTURES OF PHONE HW ENGINE



LCD Side (BOT side in parts list). Area marked in Red is BT transceiver module.



BATTERY Side (TOP side in parts list). Pads marked in red are BT antenna connection points. BT antenna is enclosed in phone's mechanics.