

Back of EUT without battery pack

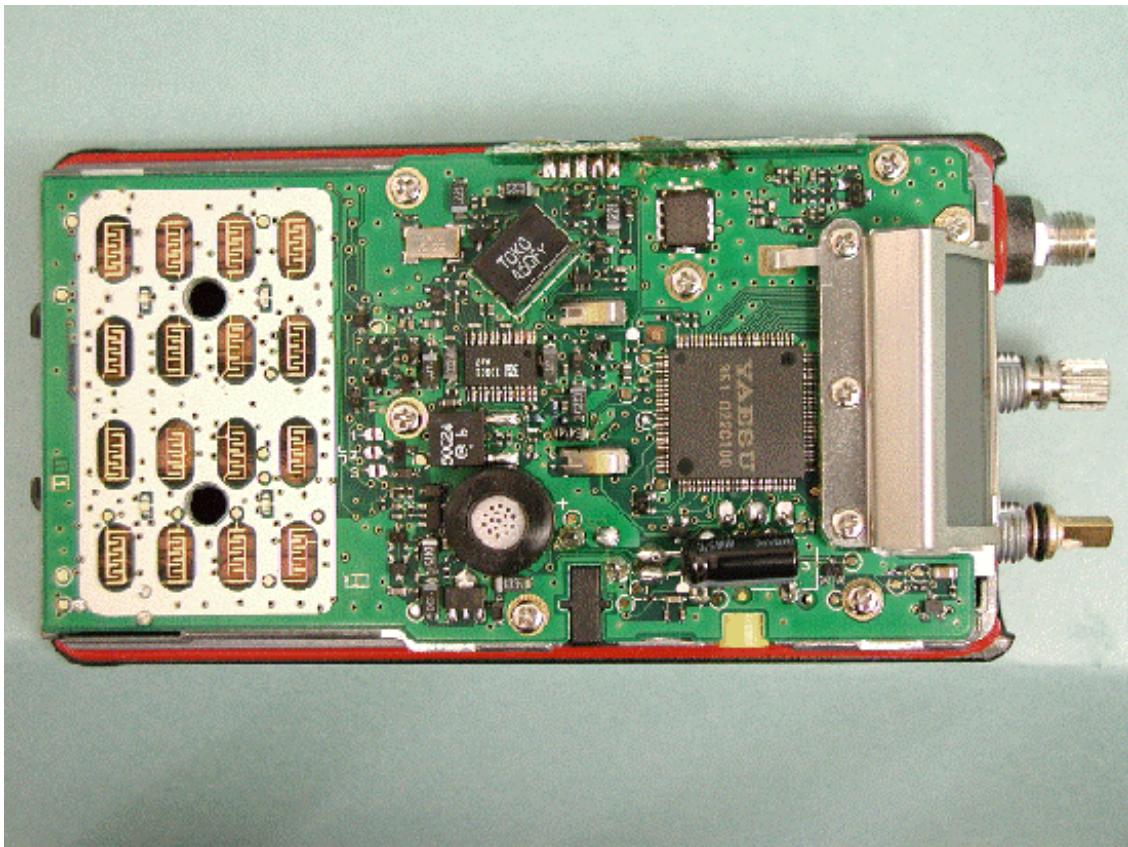


Battery pack

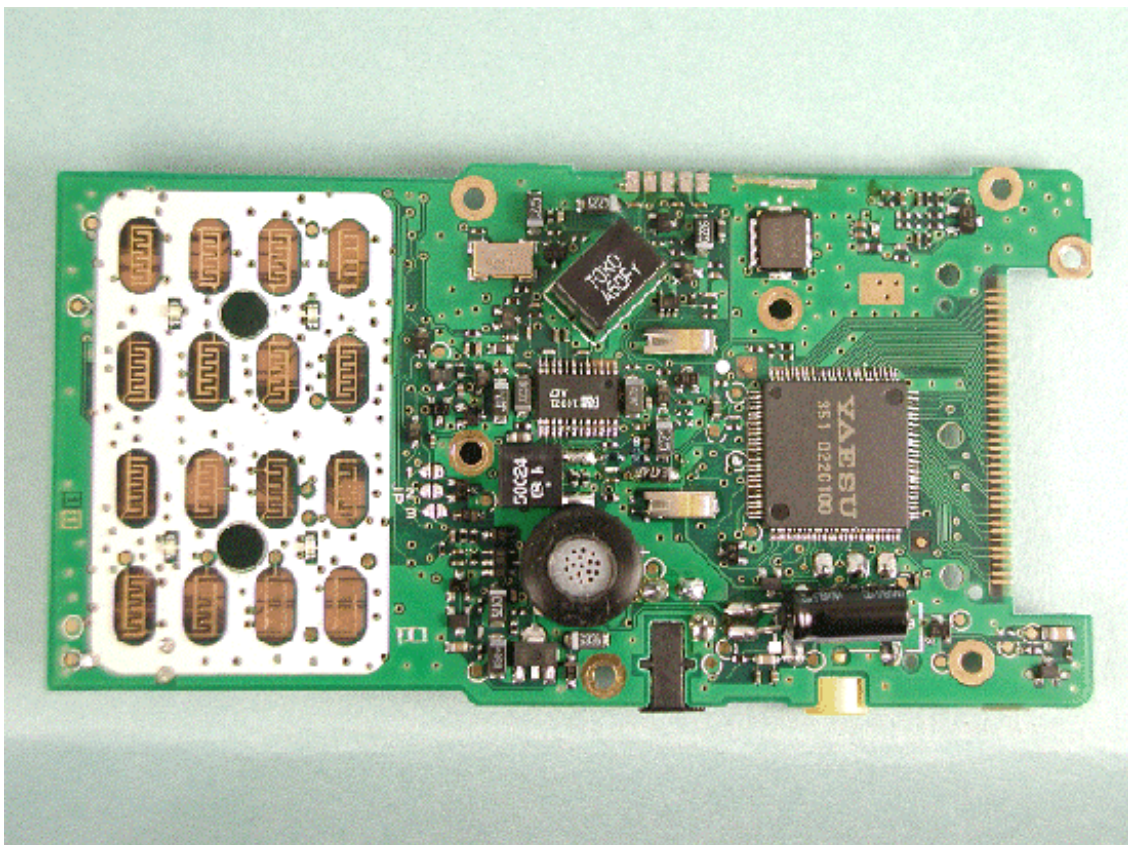




Component side of MAIN-UNIT with LCD

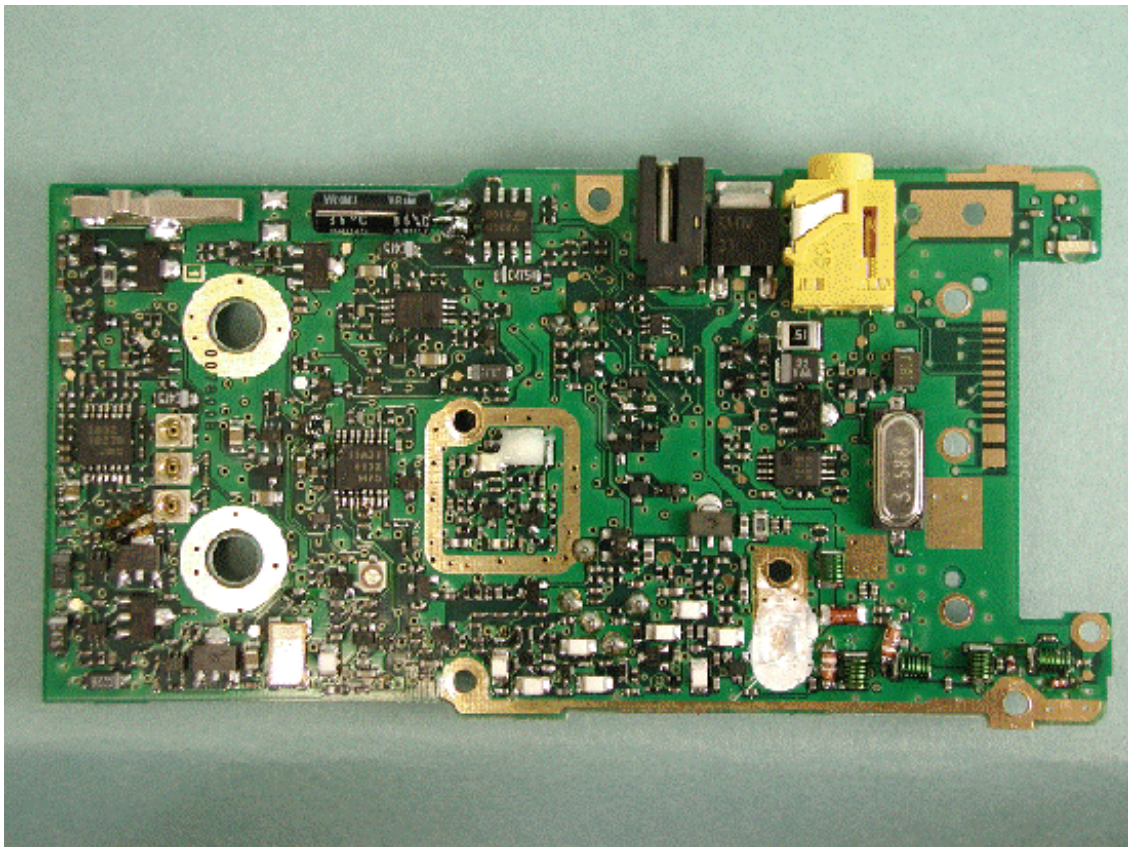


Component side of MAIN-UNIT without LCD

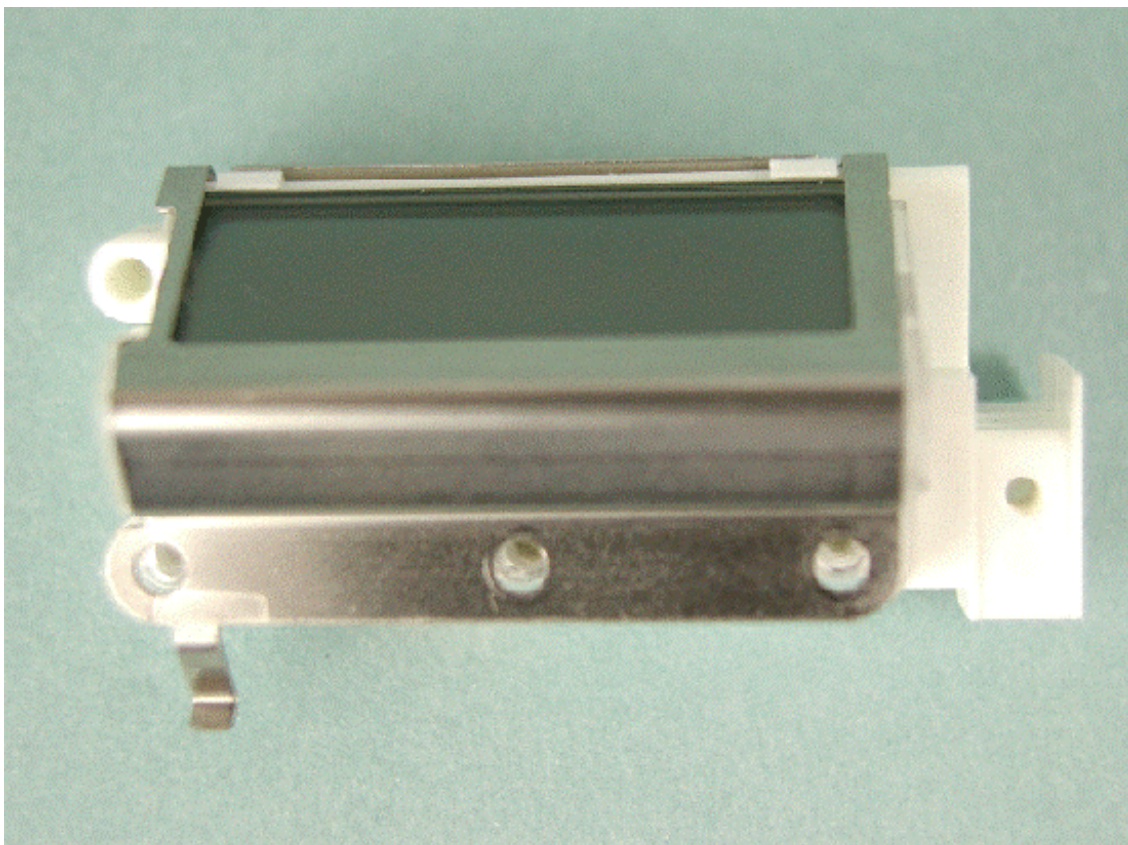




Solder side of MAIN-UNIT

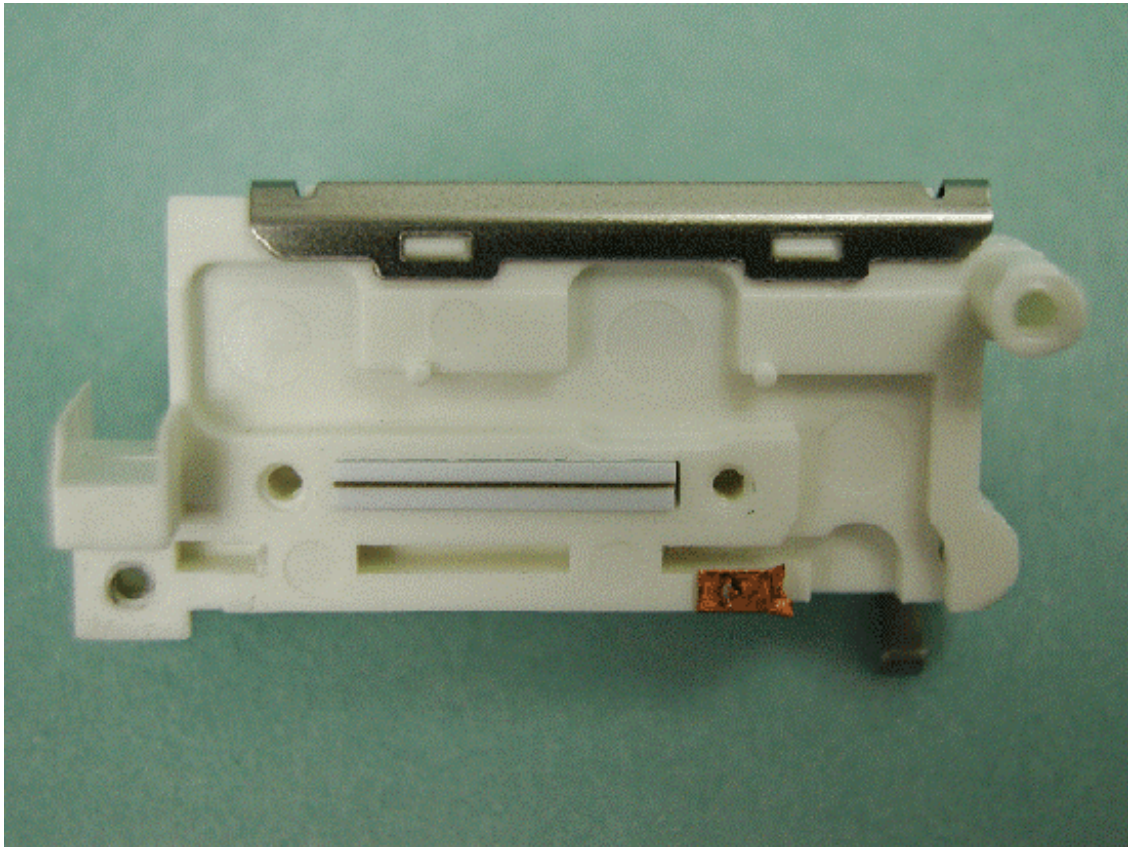


Front of LCD

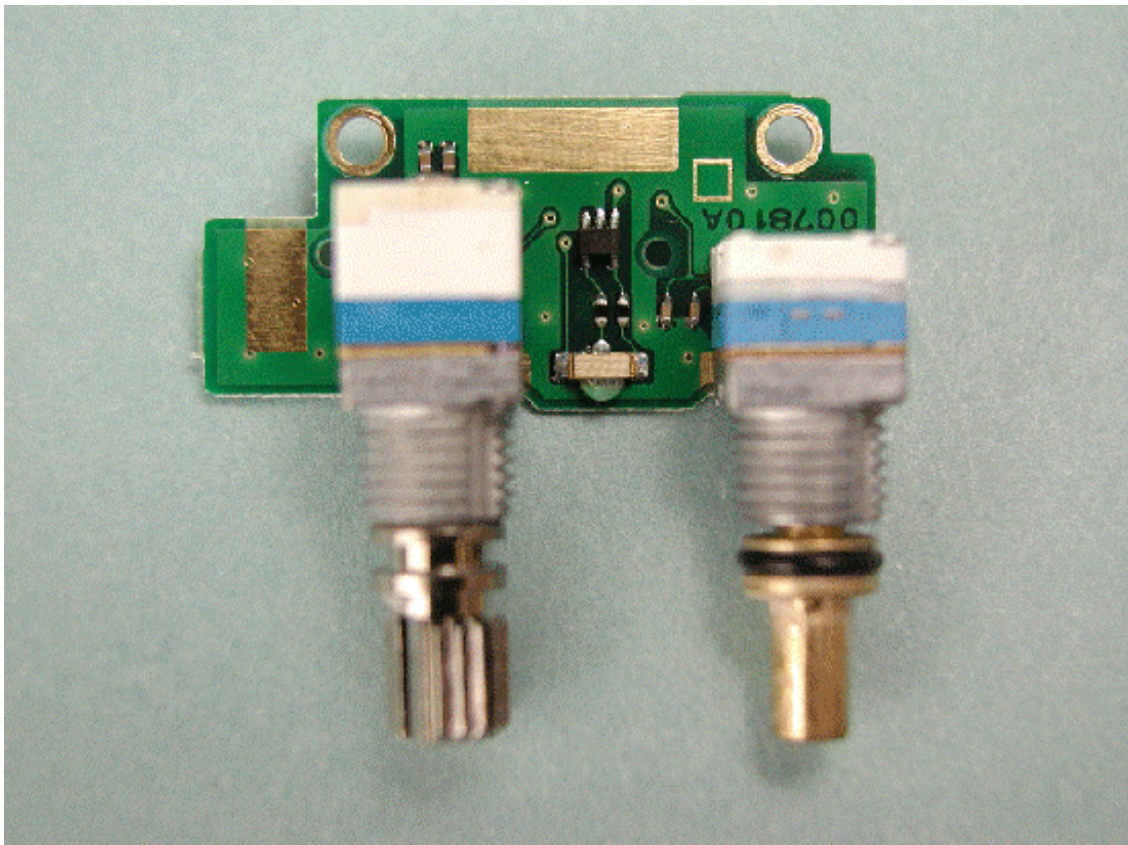




Back of LCD

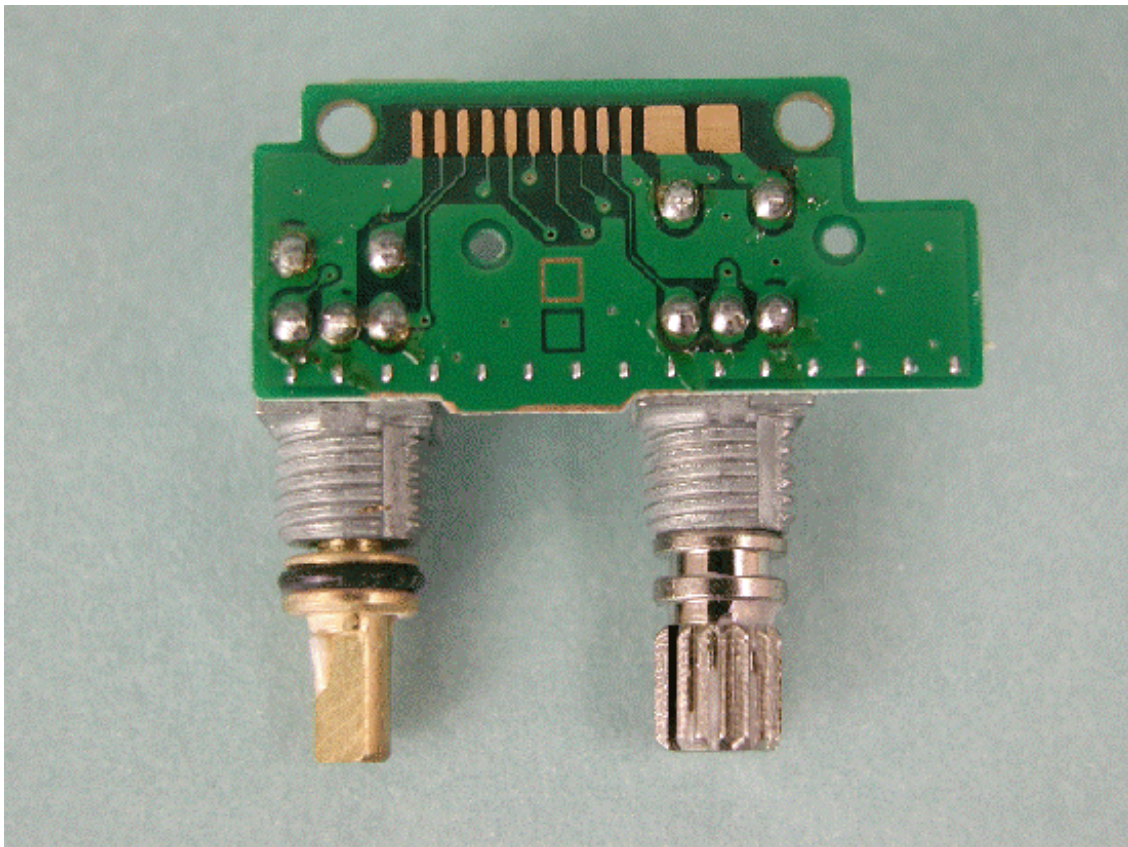


Side-A of VR-UNIT

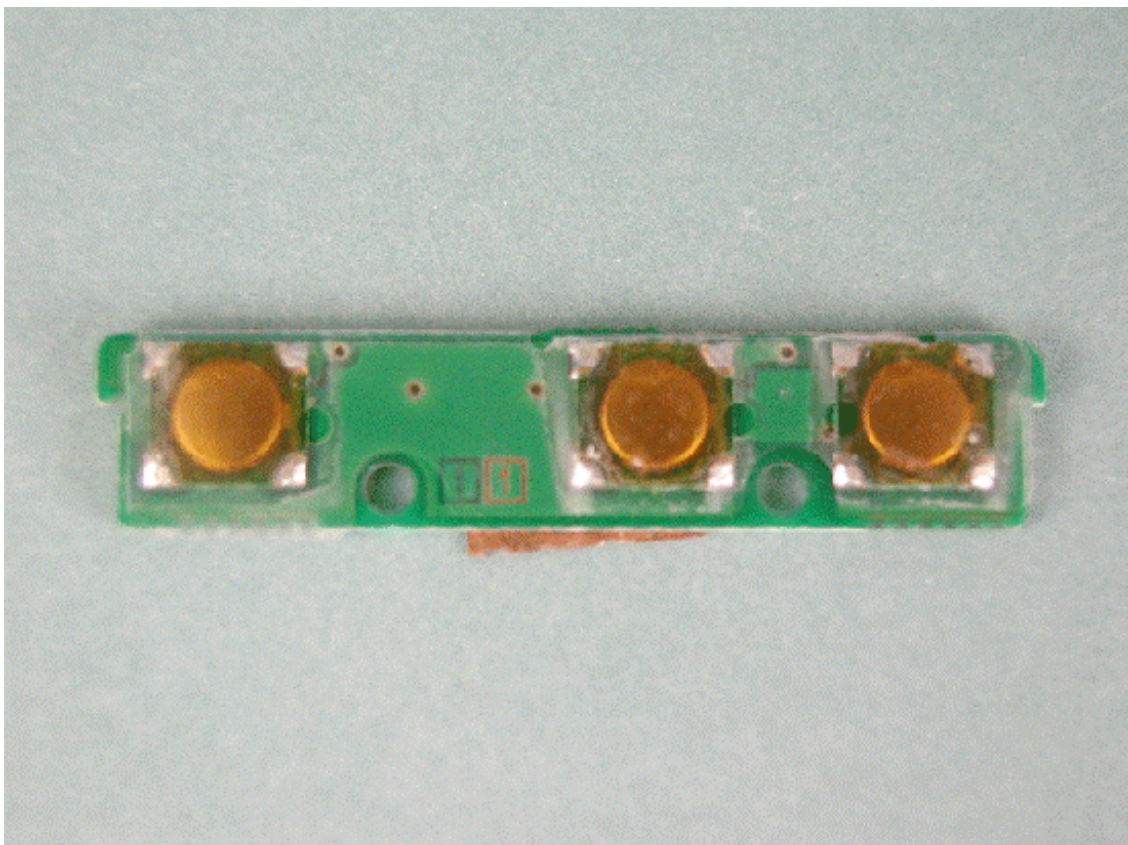




Side-B of VR-UNIT

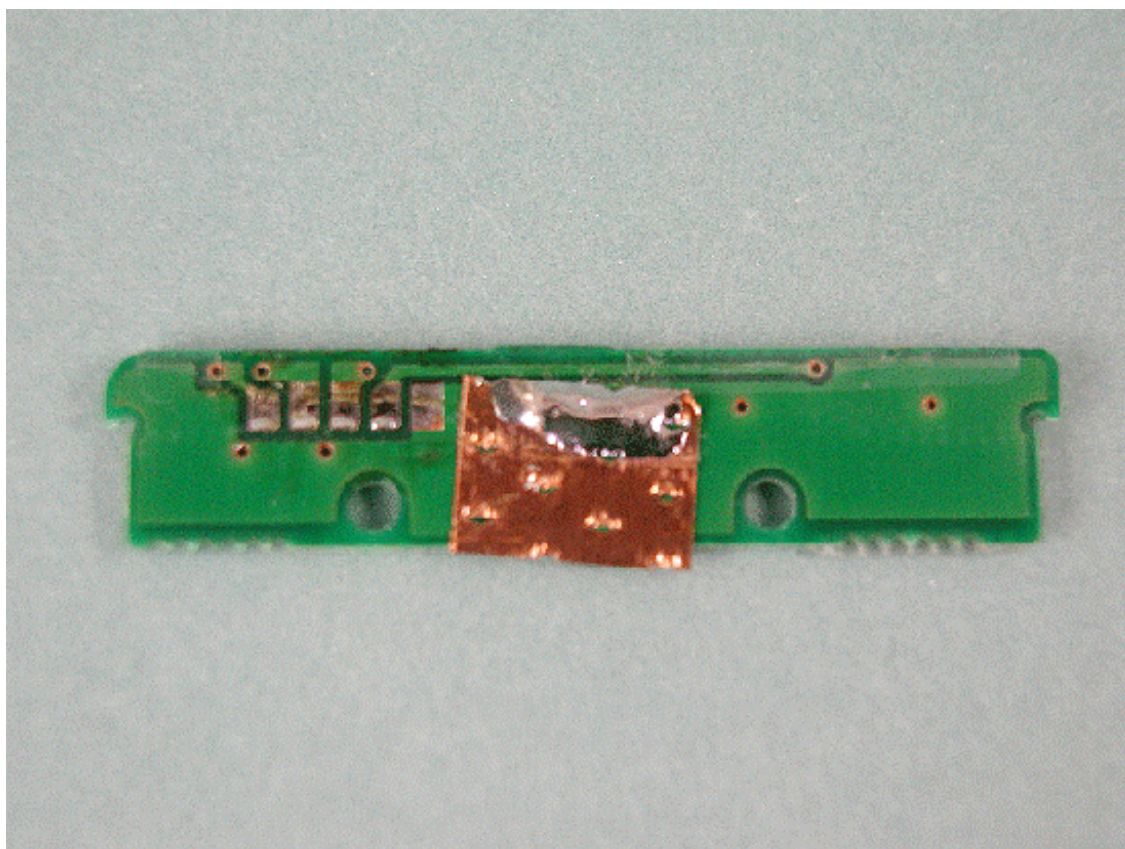


Side-A of SW-UNIT

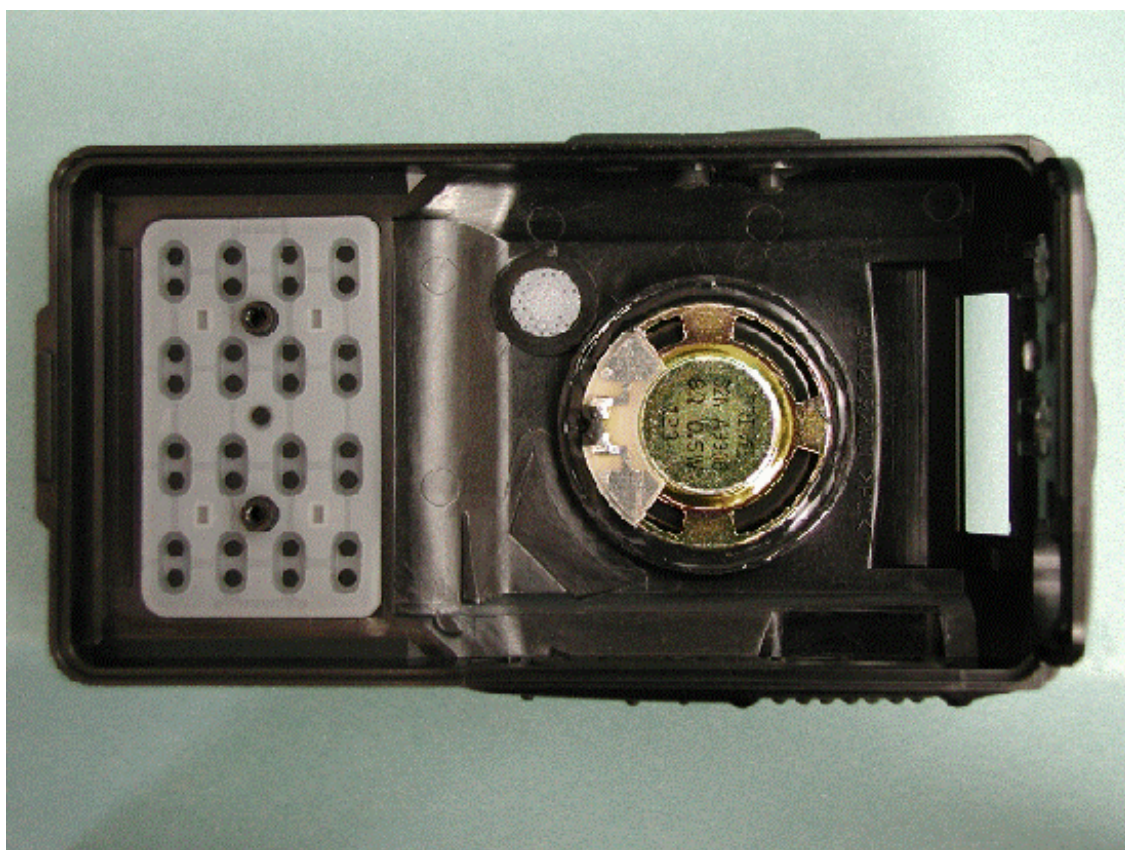




Side-B of SW-UNIT

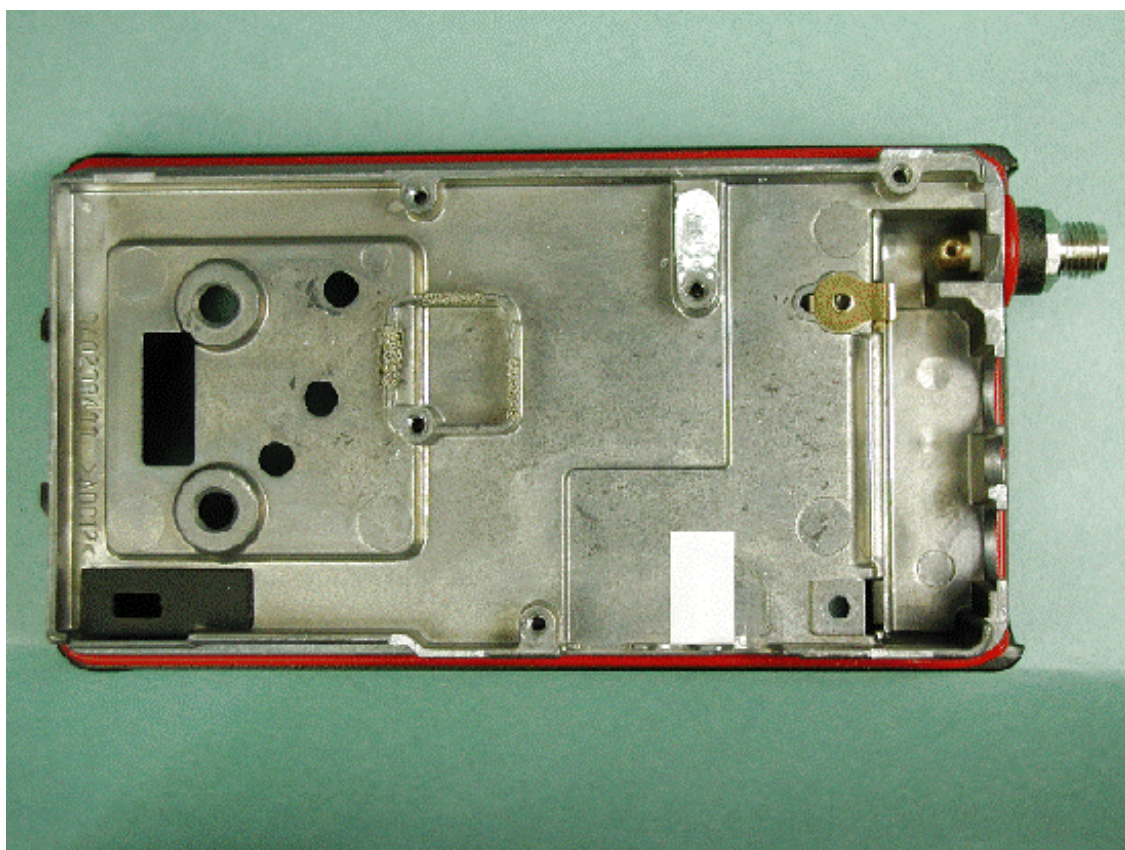


Inside of front panel

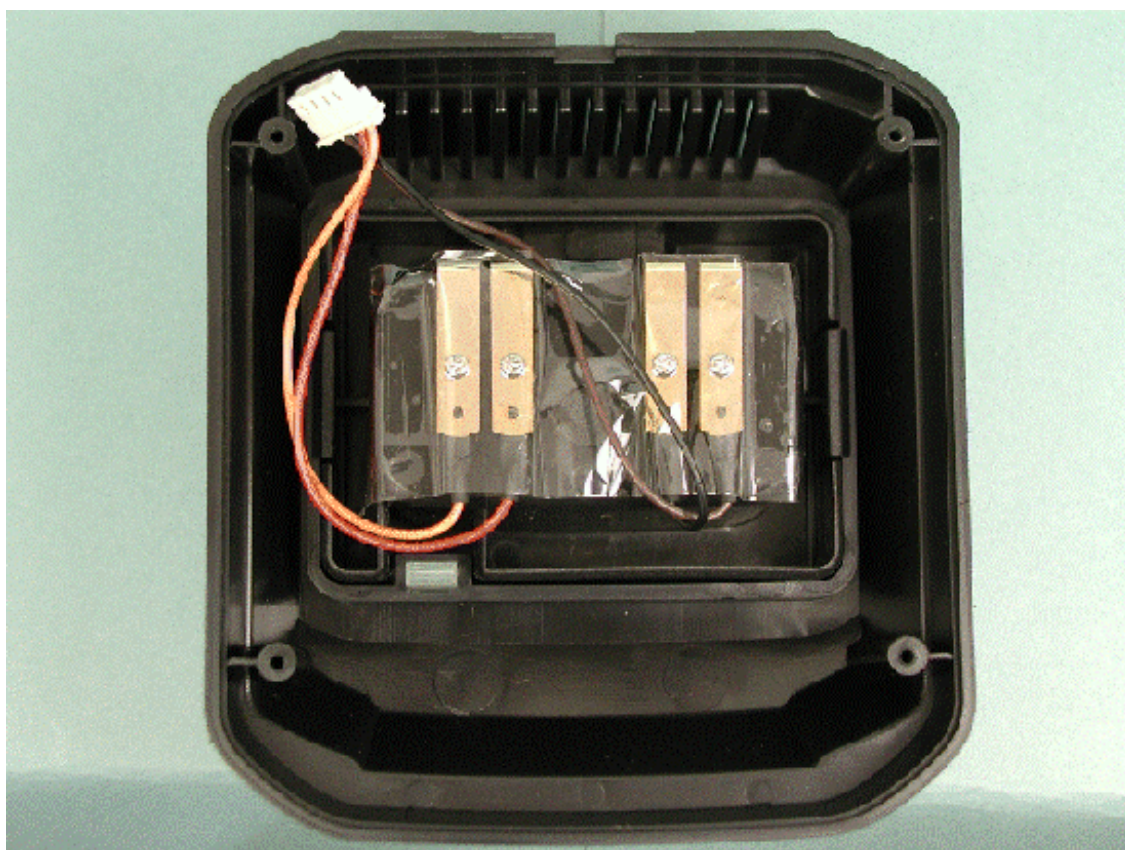




Inside back of chassis



Inside top of battery charger

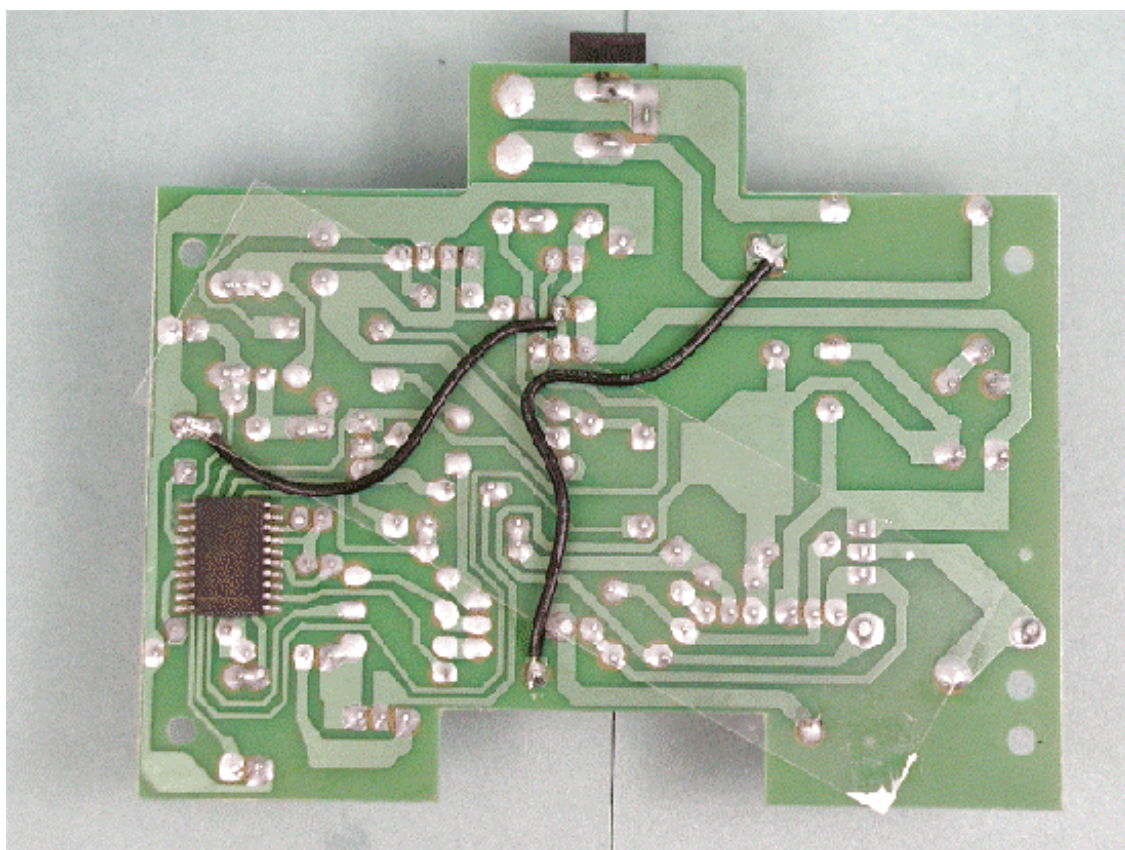




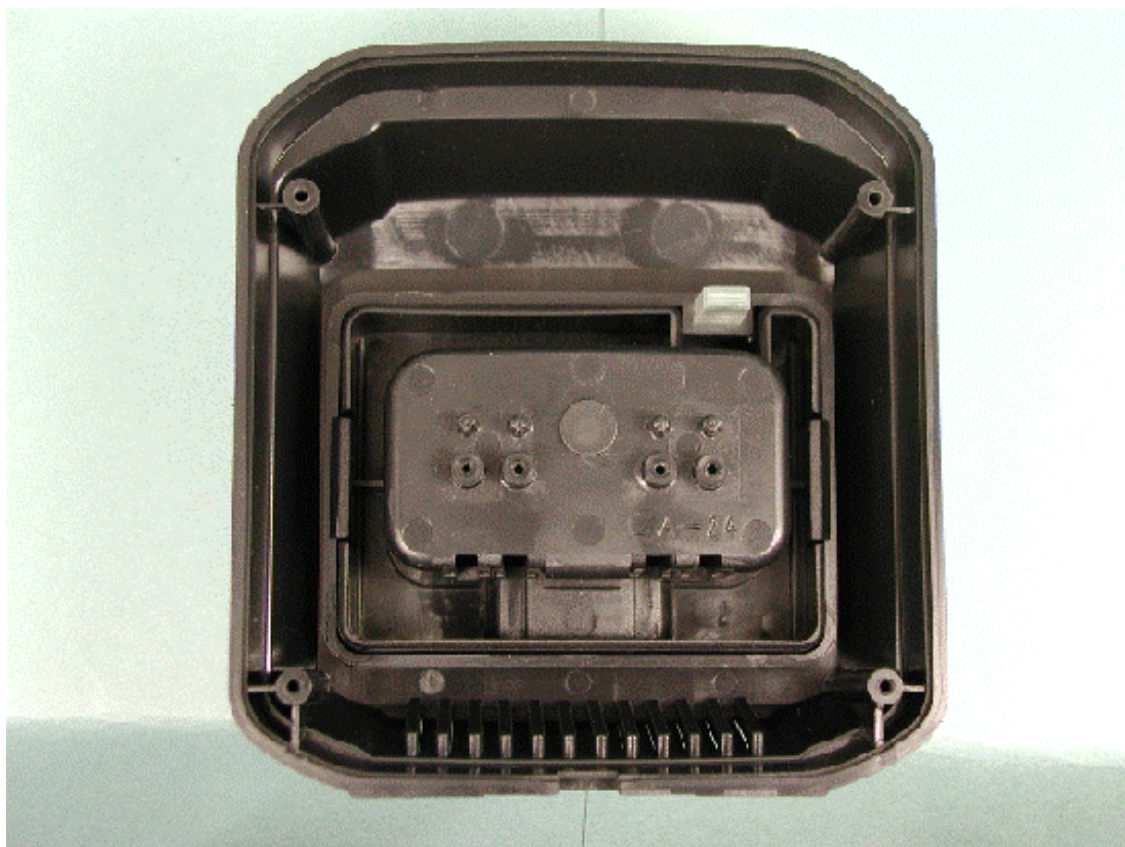




Solder side of battery charger PCB



Inside top of battery charger chassis

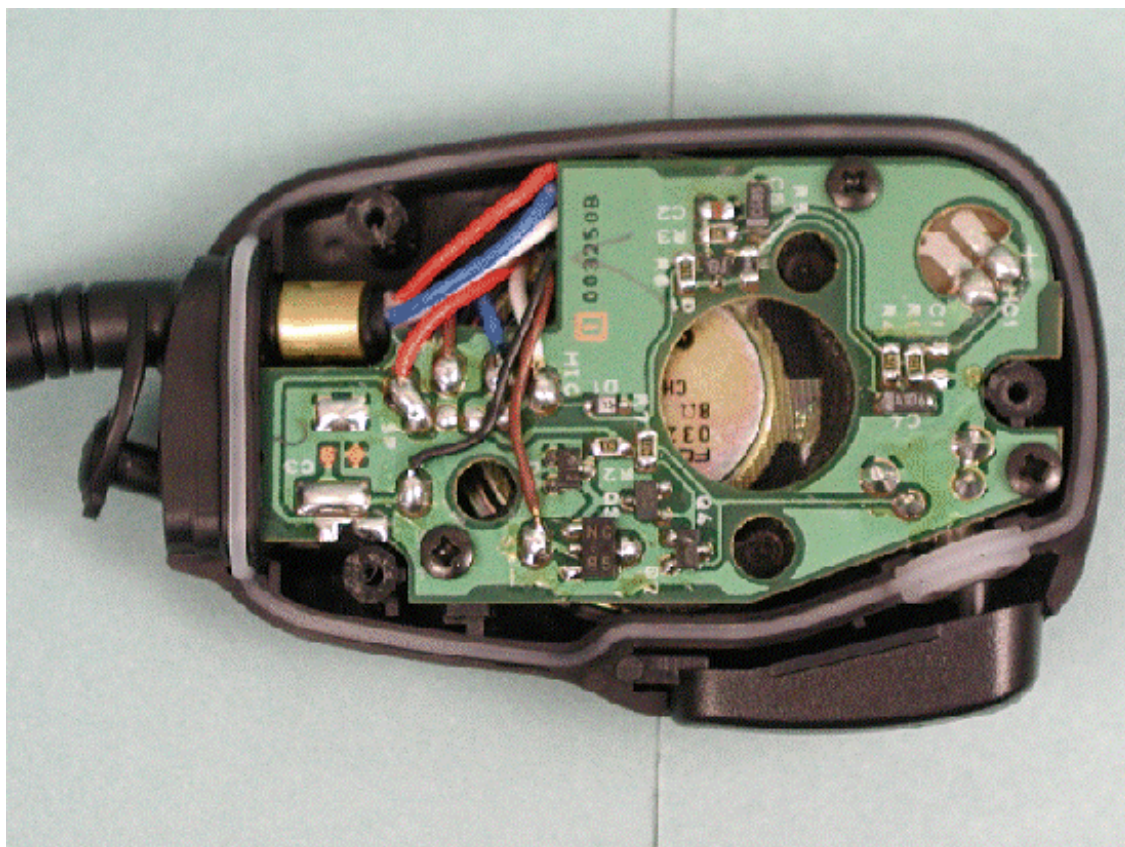




Inside bottom of battery charger chassis

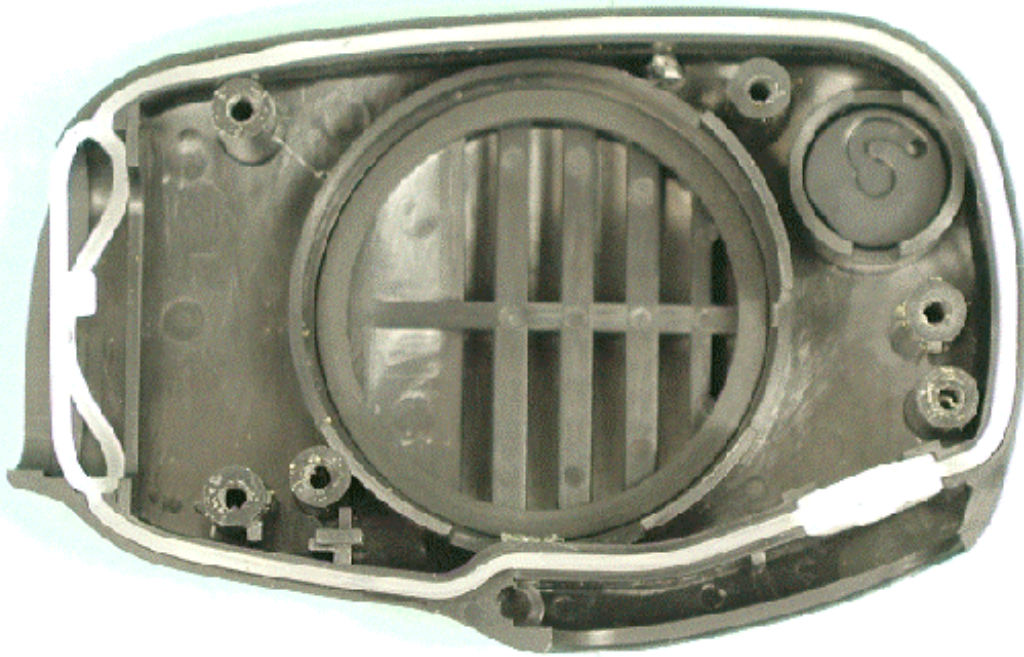


Inside of microphone

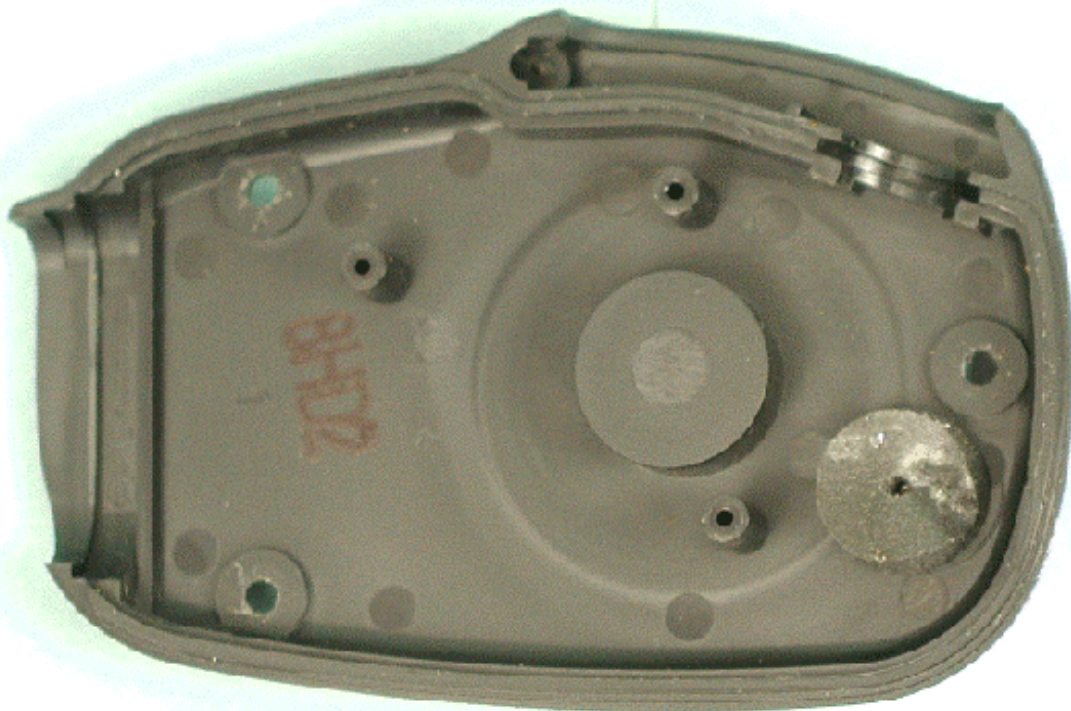




Inside front of microphone chassis

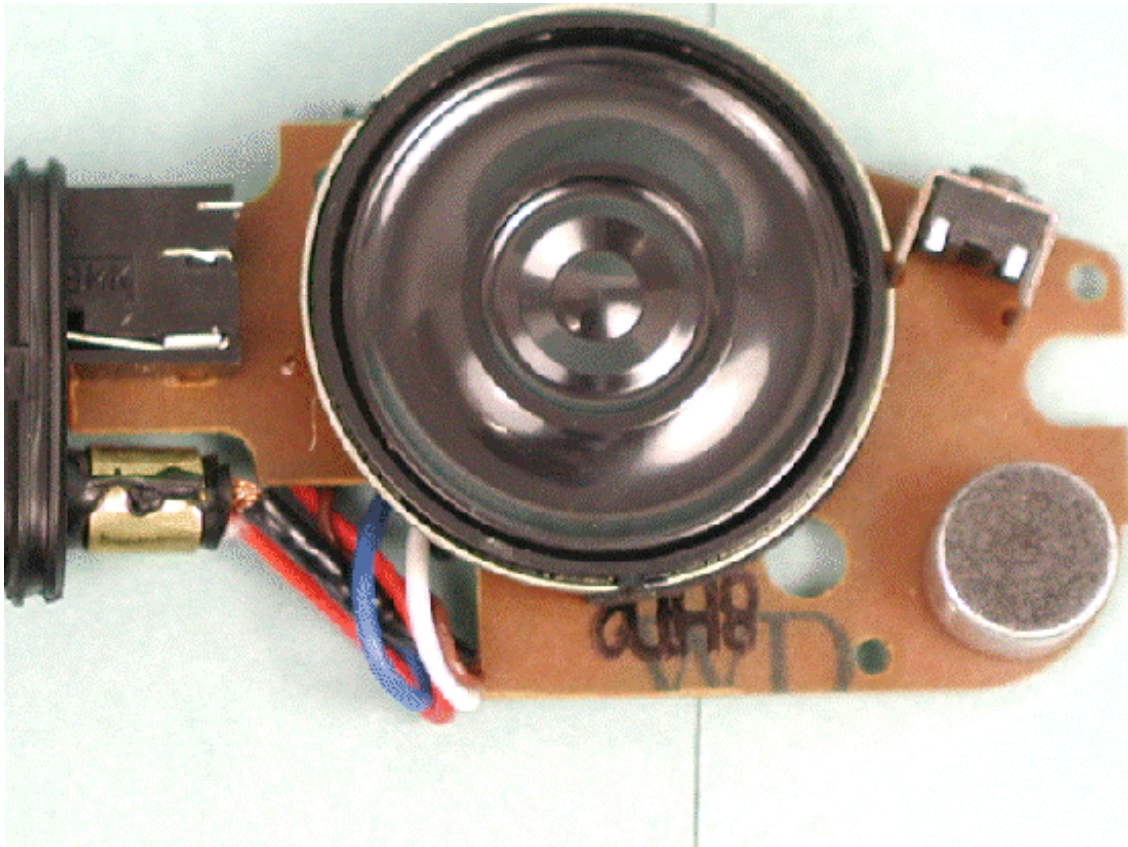


Inside back of microphone chassis





Component side of microphone PCB



Solder side of microphone PCB

