

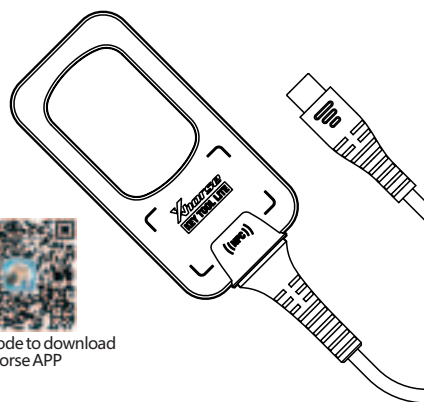
FCC ID: 2AI4T-XDKML0

KEY TOOL LITE

USER MANUAL

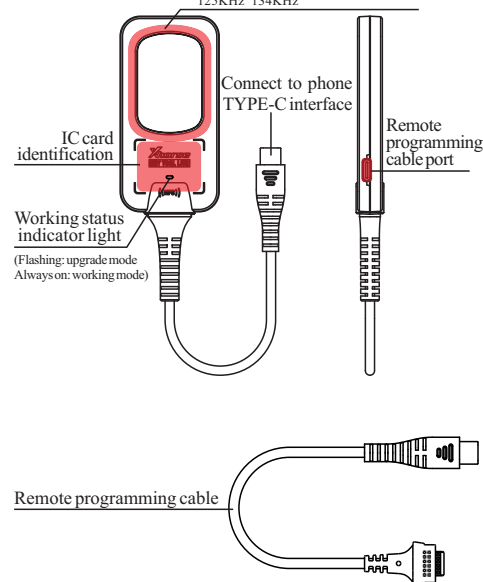


Scan QR Code to download
Xhorse APP

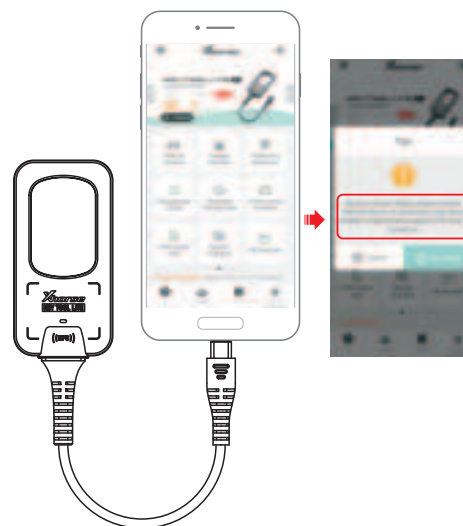


Overview

1. Remote frequency detection
2. Chip clone collection
3. Chip and remote reading coil
125KHz 134KHz



Phone connection method



Power on: Insert the TYPE-C cable, and allow the app to access the USB port of the phone, and connect the device.

Power off: unplug the TYPE-C cable.

Note: If there is a prompt on the right side of the interface, open the phone settings and turn on the OTG connection switch.

Main function 1: Vehicle Remote, Generate Transponder, Frequency Detection



Vehicle Remote

Generate Transponder

Frequency Detection

Vehicle Remote:

Support Xhorse XK-wire remote, XN-wireless remote, XE-wireless remote and Xhorse Smart remote generation.

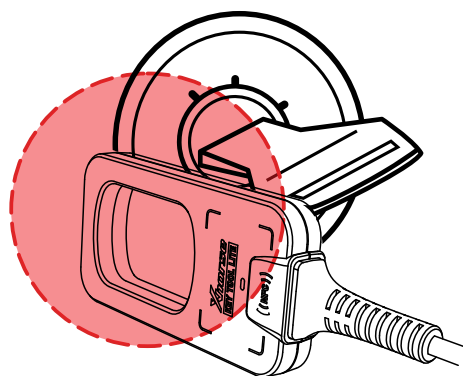
Generate Transponder:

Support VVDIXT27 super remote generation.

Frequency Detection:

Frequency Detection:
Support common car key frequency detection.

Main function 2: Transponder Clone



As shown in the figure, move the KEY TOOL LITE close to the ignition switch, and turn the ignition key on and off repeatedly. (For push start system, use the KEY TOOL LITE close to the emergency switch area, then press the start button repeatedly.)

Main function 3: Transponder Clone (Clone interface process)



Main function 4: IC/ID Clone



Warranty And After-Sale Instructions

KEYTOOL LITE has one year warranty, and it is based on the date on the transaction voucher; If do not have transaction voucher or lost it, the factory date recorded by the manufacturer will prevail.

※ Situations on the below can not get free repairmen

- Damage caused by not following the use instructions.
- Damage caused by repairing or retrofitting in private.
- Damage caused by fall, crash or inappropriate voltage.
- Damage caused by inevitable force.
- Damage caused by using in harsh environment or on the vehicle and ship for a long time; Get main body dirty and worn due to use.

Please get in contact with dealer or scan the QR code behind the instruction, download Xhorse official APP to get after-sale and technical support.

The pictures are for reference only, the actual product shall prevail. Xhorse reserves all rights to this manual. Without permission, any individual or organization is prohibited from copying and disseminating any part of this manual in any form and product improvement. The content of this manual may be changed without prior notice.

正面

反面



KEY TOOL LITE

FCC statements:

This device complies with part 15 of the FCC rules. Operation is subject to the following two conditions:

(1) This device may not cause harmful interference, and (2) This device must accept any interference received, including interference that may cause undesired operation.

NOTE: The manufacturer is not responsible for any radio or TV interference caused by unauthorized modifications or changes to this equipment. Such modifications or changes could void the user's authority to operate the equipment.

NOTE: This equipment has been tested and found to comply with the limits for a Class B digital device, pursuant to part 15 of the FCC Rules. These limits are designed to provide reasonable protection against harmful interference in a residential installation. This equipment generates uses and can radiate radio frequency energy and, if not installed and used in accordance with the instructions, may cause harmful interference to radio communications. However, there is no guarantee that interference will not occur in a particular installation. If this equipment does cause harmful interference to radio or television reception, which can be determined by turning the equipment off and on, the user is encouraged to try to correct the interference by one or more of the following measures:

- Reorient or relocate the receiving antenna.
- Increase the separation between the equipment and receiver.
- Connect the equipment into an outlet on a circuit different from that to which the receiver is connected.
- Consult the dealer or an experienced radio/TV technician for help.

The device has been evaluated to meet general RF exposure requirement. The device can be used in portable exposure condition without restriction. Federal Communication Commission (FCC) Radiation Exposure Statement Power is so low that no RF exposure calculation is needed.

CE & UKCA statements:

Declaration of Conformity Hereby, Shenzhen Xhorse Electronics Co., Ltd. declares that the radio equipment type XDKML0 is in compliance with directive 2014/53/EU and RER 2017 (SI 2017/1206).



RF exposure information: The device has been evaluated to meet general RF exposure requirement. The device can be used in portable exposure condition without restriction. Radiation Exposure Statement Power is so low that no RF exposure calculation is needed.

Bands	Operation Frequency	Max.Power
125 KHz	125 KHz	E-field(V/m): 37.14 H-field(A/m): 1.5827
134 KHz	134 KHz	E-field(V/m): 27.16 H-field(A/m): 1.5991