


FCC Part 15B Test Report

FCC ID:2APRB-X10

Report No. : TBR-C-202405-0316-221
Applicant : Guangdong Juan Intelligent Technology Joint Stock Co., Ltd.
Equipment Under Test (EUT)
EUT Name : 4G CAMERA
Model No. : X10
Series Model No. : X20
Brand Name : JUANCLOUD
Sample ID : HC-C-202405-0316-04-01#
Receipt Date : 2024-06-13
Test Date : 2024-06-13 to 2024-06-28
Issue Date : 2024-06-28
Standards : FCC 47 CFR Part 15 Subpart B
Conclusions : **PASS**

In the configuration tested, the EUT complied with the standards specified above
The EUT technically complies with the FCC requirements.

Test By : Marvin
Reviewed By : Camille Li
Approved By : Ivan Su



This report details the results of the testing carried out on one sample. The results contained in this test report do not relate to other samples of the same product. The manufacturer should ensure that all products in series production are in conformity with the product sample detailed in the report.

Contents

CONTENTS.....	2
REVISION HISTORY.....	3
1. GENERAL INFORMATION.....	4
1.1 Client Information.....	4
1.2 General Description of EUT (Equipment Under Test)	4
1.3 Block Diagram Showing The Configuration of System Tested.....	5
1.4 Description of Support Units	5
1.5 Description of Test Mode.....	6
1.6 Test standards.....	6
1.7 Test Facility.....	7
1.8 Measurement Uncertainty	7
2. TEST SOFTWARE.....	8
3. TEST SUMMARY.....	8
4. TEST EQUIPMENT USED AND TEST SITE	8
5. LABEL REQUIREMENTS & STATEMENT REQUIREMENTS	9
6. CONDUCTED EMISSION TEST	10
6.1 Test Standard and Limit.....	10
6.2 Test Setup.....	10
6.3 Test Procedure.....	11
6.4 Deviation From Test Standard.....	11
6.5 EUT Operating Mode	11
6.6 Test Data.....	11
7. RADIATED EMISSION TEST	12
7.1 Test Standard and Limit.....	12
7.2 Test Setup.....	13
7.3 Test Procedure.....	13
7.4 Deviation From Test Standard.....	14
7.5 EUT Operating Mode	14
7.6 Test Data.....	14
8. PHOTOGRAPHS - CONSTRUCTIONAL DETAILS	15
9. PHOTOGRAPHS - TEST SETUP	25
ATTACHMENT A-- CONDUCTED EMISSION DATA (AC MAINS)	27
ATTACHMENT A--RADIATED EMISSION TEST DATA	29

Revision History

Report No.	Version	Description	Issued Date
TBR-C-202405-0316-221	Rev.01	Initial issue of report	2024-06-28

1. General Information

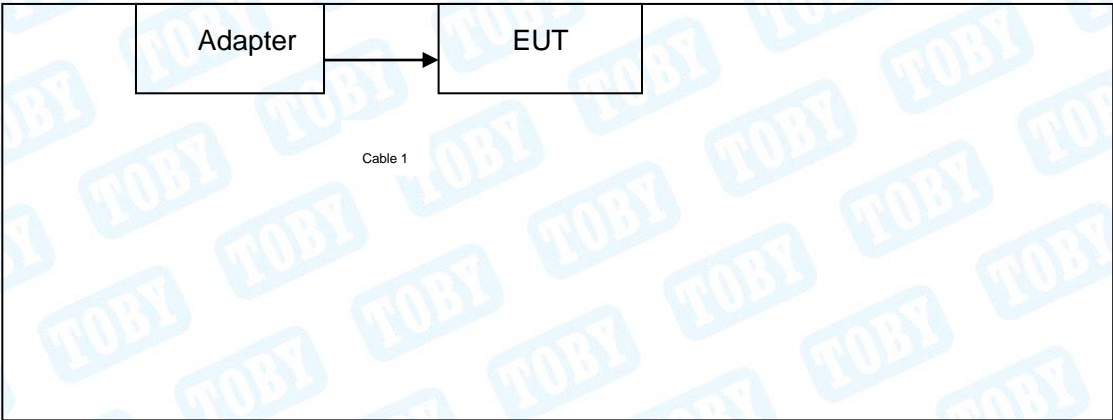
1.1 Client Information

Applicant	:	Guangdong Juan Intelligent Technology Joint Stock Co., Ltd.
Address	:	THE FIRST AND SECOND FLOORS OF BUILDING 2 (PLANT NO.2), WEST SIDE OF SHANXI VILLAGE, DASHI STREET, PANYU DISTRICT, GUANGZHOU, China
Manufacturer	:	Guangdong Juan Intelligent Technology Joint Stock Co., Ltd.
Address	:	THE FIRST AND SECOND FLOORS OF BUILDING 2 (PLANT NO.2), WEST SIDE OF SHANXI VILLAGE, DASHI STREET, PANYU DISTRICT, GUANGZHOU, China

1.2 General Description of EUT (Equipment Under Test)

EUT Name	:	4G CAMERA
Model(s)	:	X10, X20
Model Difference	:	All these models are identical in the same PCB layout and electrical circuit, the only difference is that appearance.
Fx	:	$\geq 108\text{MHz}$
Power Rating	:	Adapter Model: CS-1201000 Input: AC 100-240V~ 50/60Hz 0.5A Max Output: 12V $\overline{\text{---}}$ 1A
Software Version	:	V4.9.10.2
Hardware Version	:	V234P2
Equipment	:	<input type="checkbox"/> Class A <input checked="" type="checkbox"/> Class B
<p>Class A Equipment: the Equipment is not intended primarily for use in a residential environment.</p> <p>Class B Equipment: the Equipment is intended primarily for use in a residential environment.</p> <p>Fx: Highest frequency generated or used in the device or on which the device operates or tunes (MHz).</p>		

1.3 Block Diagram Showing The Configuration of System Tested



1.4 Description of Support Units

Equipment Information				
Name	Model	S/N	Manufacturer	Used “√”
Adapter	CS-1201000	-----	-----	√
Cable Information				
Number	Shielded Type	Ferrite Core	Length	Note
-----	-----	-----	----	-----
Remark: The adapter is provided by the Applicant.				

1.5 Description of Test Mode

To investigate the maximum EMI emission characteristics generates from EUT, the test system was pre-scanning tested base on the consideration of following EUT operation mode or test configuration mode which possible have effect on EMI emission level. Each of these EUT operation mode(s) or test configuration mode(s) mentioned follow was evaluated respectively.

Pretest Mode	Description
Mode 1	Working Mode

For Conducted Test	
Final Test Mode	Description
Mode 1	Working Mode
For Radiated Test(Below 1GHz)	
Final Test Mode	Description
Mode 1	Working Mode
For Radiated Test(Above 1GHz)	
Mode 1	Working Mode
Note:X10 and X20 are identical in the same PCB layout and electrical circuit, the only difference is that appearance, did a difference test For Radiated Test(Below 1GHz)	

1.6 Test standards

The objective is to determine compliance with FCC Part 15, Subpart B, and section 15.107, 15.109 rules.
Maintenance of compliance is the responsibility of the manufacturer. Any modification of the product, which result in lowering the emission, should be checked to ensure compliance has been maintained.

1.7 Test Facility

The testing report were performed by the Shenzhen Toby Technology Co., Ltd., in their facilities located at 1/F., Building 6, Rundongsheng Industrial Zone, Longzhu, Xixiang, Bao'an District, Shenzhen, Guangdong, China. At the time of testing, the following bodies accredited the Laboratory:

CNAS (L5813)

The Laboratory has been accredited by CNAS to ISO/IEC 17025: 2017 General Requirements for the Competence of Testing and Calibration Laboratories for the competence in the field of testing. And the Registration No.: CNAS L5813.

A2LA Certificate No.: 4750.01

The laboratory has been accredited by American Association for Laboratory Accreditation(A2LA) to ISO/IEC 17025: 2017 General Requirements for the Competence of Testing and Calibration Laboratories for the technical competence in the field of Electrical Testing. And the A2LA Certificate No.: 4750.01.FCC Accredited Test Site Number: 854351. Designation Number: CN1223.

IC Registration No.: (11950A)

The Laboratory has been registered by Certification and Engineering Bureau of Industry Canada for radio equipment testing. The site registration: Site# 11950A. CAB identifier: CN0056.

1.8 Measurement Uncertainty

The reported uncertainty of measurement $y \pm U$, where expended uncertainty U is based on a standard uncertainty multiplied by a coverage factor of $k=2$, providing a level of confidence of approximately 95 %.

Test	Parameters	Expanded Uncertainty (U_{Lab})	Expanded Uncertainty (U_{Cispr})
Conducted Emission	Level Accuracy: 9kHz~150kHz 150kHz to 30MHz	± 3.50 dB ± 3.10 dB	± 4.0 dB ± 3.6 dB
Radiated Emission	Level Accuracy: Above 1000MHz	± 4.50 dB	N/A
Radiated Emission	Level Accuracy: 30MHz to 1000 MHz	± 4.40 dB	± 5.2 dB

2. Test Software

Test Item	Test Software	Manufacturer	Version No.
Conducted Emission	EZ-EMC	EZ	CDI-03A2
Radiation Emission	EZ-EMC	EZ	FA-03A2RE
Radiation Emission	EZ-EMC	EZ	FA-03A2RE+

3. Test Summary

Test Items	Test Requirement	Test Method	Result
Conducted Emission	FCC 47 CFR Part 15 Section 15.107	ANSI C63.4-2014	Pass
Radiated Emission	FCC 47 CFR Part 15 Section 15.109	ANSI C63.4-2014	Pass

Note: N/A is an abbreviation for Not Applicable.

4. Test Equipment Used and Test Site

Test Site				
No.	Test Site	Manufacturer	Specification	Used
TB-EMCSR001	Shielding Chamber #1	YIHENG	7.5*4.0*3.0 (m)	✓
TB-EMCSR002	Shielding Chamber #2	YIHENG	8.0*4.0*3.0 (m)	X
TB-EMCCA001	3m Anechoic Chamber #A	ETS	9.0*6.0*6.0 (m)	X
TB-EMCCB002	3m Anechoic Chamber #B	YIHENG	9.0*6.0*6.0 (m)	✓

Conducted Emission Test					
Equipment	Manufacturer	Model No.	Serial No.	Last Cal.	Cal. Due Date
EMI Test Receiver	Rohde & Schwarz	ESCI	100321	Jun. 17, 2024	Jun. 16, 2025
RF Switching Unit	Compliance Direction Systems Inc	RSU-A4	34403	Jun. 17, 2024	Jun. 16, 2025
AMN	SCHWARZBECK	NNBL 8226-2	8226-2/164	Jun. 17, 2024	Jun. 16, 2025
LISN	Rohde & Schwarz	ENV216	101131	Jun. 17, 2024	Jun. 16, 2025
Radiation Emission Test					
Equipment	Manufacturer	Model No.	Serial No.	Last Cal.	Cal. Due Date
Spectrum Analyzer	Agilent	N9020A	MY49100060	Aug. 30, 2023	Aug. 29, 2024
Spectrum Analyzer	Rohde & Schwarz	FSV40-N	102197	Jun. 17, 2024	Jun. 16, 2025
EMI Test Receiver	Rohde & Schwarz	ESU-8	100472/008	Feb. 23, 2024	Feb.22, 2025
Bilog Antenna	SCHWARZBECK	VULB 9168	1225	Nov. 13, 2023	Nov. 12, 2025
Horn Antenna	SCHWARZBECK	BBHA 9120 D	2463	Jun. 14, 2024	Jun. 13, 2026
Horn Antenna	SCHWARZBECK	BBHA 9170	1118	Feb. 27, 2024	Feb.26, 2026
Loop Antenna	SCHWARZBECK	FMZB 1519 B	1519B-059	Jun. 14, 2024	Jun. 13, 2026
HF Amplifier	Tonscend	TAP9E6343	AP21C806117	Aug. 30, 2023	Aug. 29, 2024
HF Amplifier	Tonscend	TAP051845	AP21C806141	Aug. 30, 2023	Aug. 29, 2024
HF Amplifier	Tonscend	TAP0184050	AP21C806129	Aug. 30, 2023	Aug. 29, 2024

5. Label Requirements & Statement Requirements

☒ Class B

Label Requirements

Class B digital device subject to certification by the FCC shall carry a warning label which includes the following statement:

***** WARNING *****

This device complies with Part 15 of the FCC Rules. Operation is subject to the following two conditions: (1) this device may not cause harmful interference, and (2) this device must accept any interference received, including interference that may cause undesired operation.

☐ Class A

Statement Requirements

The operator's manual for a Class A digital device shall contain the following statements or their equivalent:

***** WARNING *****

This equipment has been tested and found to comply with the limits for a Class A digital device, pursuant to part 15 of the FCC Rules. These limits are designed to provide reasonable protection against harmful interference when the equipment is operated in a commercial environment. This equipment generates, uses, and can radiate radio frequency energy and, if not installed and used in accordance with the instruction manual, may cause harmful interference to radio communications. Operation of this equipment in a residential area is likely to cause harmful interference in which case the user will be required to correct the interference at his own expense.

Notice: The changes or modifications not expressly approved by the party responsible for compliance could void the user's authority to operate the equipment.

If the EUT was tested with special shielded cables the operator's manual for such product shall also contain the following statements or their equivalent:

Shielded interface cables and/or AC power cord, if any, must be used in order to comply with the emission limits.

6. Conducted Emission Test

6.1 Test Standard and Limit

6.1.1 Test Standard

FCC Part 15.107

6.1.2 Test Limit

Conducted Emission Test Limit (Class A)

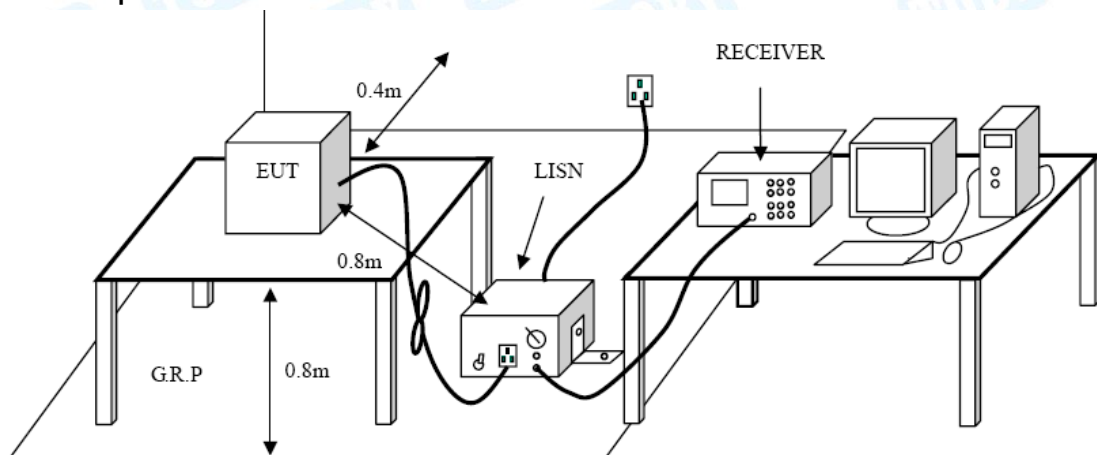
Frequency (MHz)	Maximum RF Line Voltage (dB μ V)	
	Quasi-peak Level	Average Level
0.15~0.50	79	66
0.50~30	73	60

Conducted Emission Test Limit (Class B)

Frequency (MHz)	Maximum RF Line Voltage (dB μ V)	
	Quasi-peak Level	Average Level
0.15~0.5	66 ~ 56 *	56 ~ 46 *
0.50~5	56	46
5~30	60	50

*decreasing linearly with logarithm of the frequency

6.2 Test Setup



6.3 Test Procedure

- The EUT was placed 0.8 meters from the horizontal ground plane with EUT being connected to the power mains through a line impedance stabilization network (LISN). All other support equipments powered from additional LISN(s). The LISN provide 50 Ohm/ 50uH of coupling impedance for the measuring instrument.
- Interconnecting cables that hang closer than 40 cm to the ground plane shall be folded back and forth in the center forming a bundle 30 to 40 cm long.
- I/O cables that are not connected to a peripheral shall be bundled in the center. The end of the cable may be terminated, if required, using the correct terminating impedance. The overall length shall not exceed 1 m.
- LISN at least 80 cm from nearest part of EUT chassis.
- The bandwidth of EMI test receiver is set at 9 kHz, and the test frequency band is from 0.15MHz to 30MHz.

6.4 Deviation From Test Standard

No deviation

6.5 EUT Operating Mode

Not Applicable

6.6 Test Data

Please refer to the Attachment A.

7. Radiated Emission Test

7.1 Test Standard and Limit

7.1.1 Test Standard

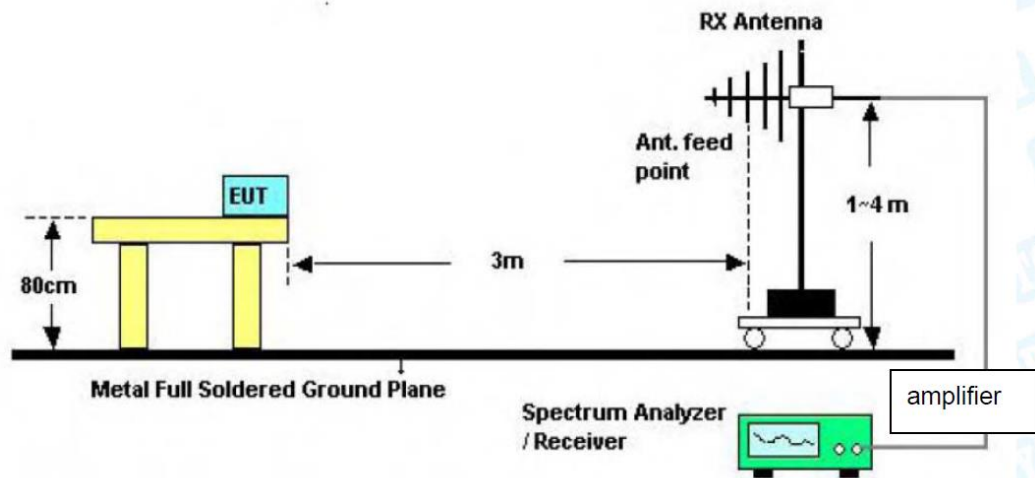
FCC Part 15.109

7.1.2 Test Limit

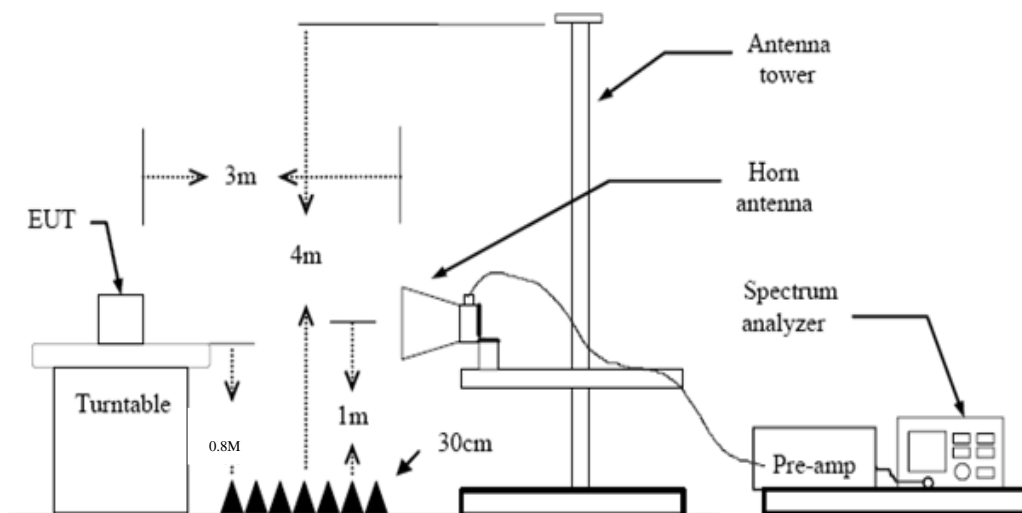
Radiated Emission Test Limit (Class A)	
Frequency MHz	Field Strengths Limits dB(μV/m)
30 ~ 88	49.0
88 ~ 216	53.5
216 ~ 960	56.4
Above 960	59.5
Radiated Emission Test Limit (Class B)	
Frequency MHz	Field Strengths Limits dB(μV/m)
30 ~ 88	40.0
88 ~ 216	43.5
216 ~ 960	46.0
Above 960	54.0
* The lower limit shall apply at the transition frequency.	
* The test distance is 3m.	

Frequency (MHz)	Class A Radiated Limit (dBµV/m)- Distance of 3 metres													
	Linear Average Detector	Peak Detector												
>1000	59.5	79.5												
Frequency (MHz)	Class B Radiated Limit (dBµV/m)-Distance of 3 metres													
	Linear Average Detector	Peak Detector												
>1000	54	74												
Note:														
<table><tr><th>Highest Frequency Generated or Used in Device</th><th>Upper Frequency of Radiated Measurement</th></tr><tr><td>Below 1.705 MHz</td><td>No radiated testing required</td></tr><tr><td>1.705 MHz – 108 MHz</td><td>1 GHz</td></tr><tr><td>108 MHz – 500 MHz</td><td>2 GHz</td></tr><tr><td>500 MHz – 1 GHz</td><td>5 GHz</td></tr><tr><td>Above 1 GHz</td><td>5th harmonic of the highest frequency or 40 GHz, whichever is lower.</td></tr></table>			Highest Frequency Generated or Used in Device	Upper Frequency of Radiated Measurement	Below 1.705 MHz	No radiated testing required	1.705 MHz – 108 MHz	1 GHz	108 MHz – 500 MHz	2 GHz	500 MHz – 1 GHz	5 GHz	Above 1 GHz	5 th harmonic of the highest frequency or 40 GHz, whichever is lower.
Highest Frequency Generated or Used in Device	Upper Frequency of Radiated Measurement													
Below 1.705 MHz	No radiated testing required													
1.705 MHz – 108 MHz	1 GHz													
108 MHz – 500 MHz	2 GHz													
500 MHz – 1 GHz	5 GHz													
Above 1 GHz	5 th harmonic of the highest frequency or 40 GHz, whichever is lower.													

7.2 Test Setup



Below 1000MHz Test Setup



Above 1GHz Test Setup

7.3 Test Procedure

The EUT was placed on the top of a rotating table which is 0.8 meters above the ground. EUT is set 3.0 meters away from the receiving antenna that mounted on a antenna tower. The table was rotated 360 degrees to determine the position of the highest radiation, the antenna can be moved up and down between 1.0 meter and 4 meters to find out the maximum emission level. Both horizontal and vertical polarizations of the antenna are set to make the measurement.

Measurements shall be made with a quasi-peak measuring receiver in the frequency range 30MHz to 1000MHz. If the Peak Mode measured value compliance with and lower than quasi-peak mode Limit, the EUT shall be deemed to meet QP Limits and then no additional QP Mode measurement performed. Measurements shall be made with a Peak and AVG measuring receiver in the frequency range Above 1000MHz.

7.4 Deviation From Test Standard

No deviation

7.5 EUT Operating Mode

Please refer to the description of test mode.

7.6 Test Data

Please refer to the Attachment B.

8. Photographs - Constructional Details

Model:X10

Photo 1 Appearance of EUT



Photo 2 Appearance of EUT



Photo 3 Appearance of EUT



Photo 4 Appearance of adapter



Photo 5 Internal of EUT



Photo 6 Internal of EUT



Photo 7 Internal of EUT



Photo 8 Internal of EUT

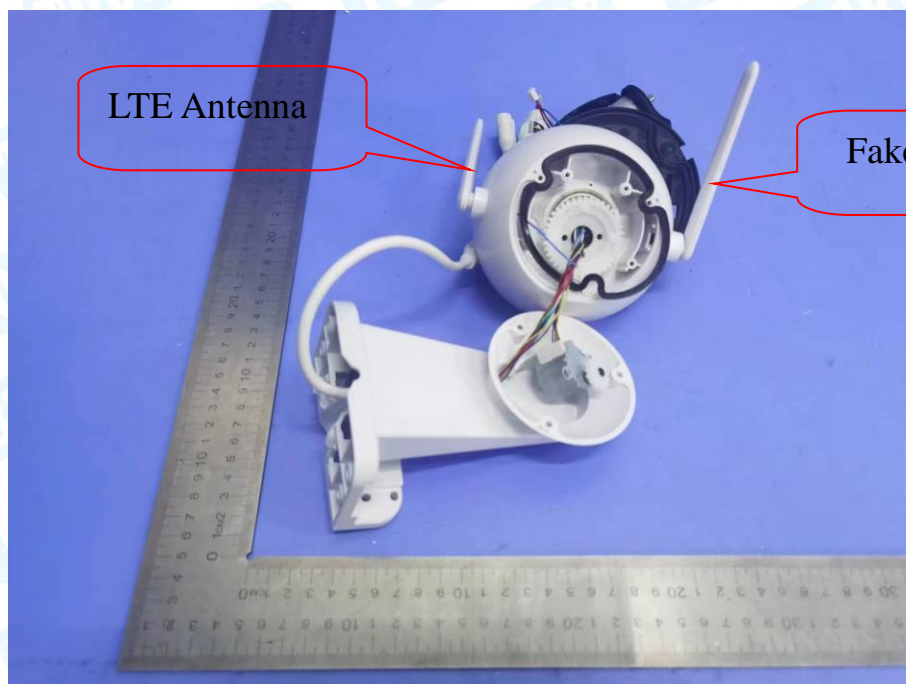


Photo 9 Appearance of PCB

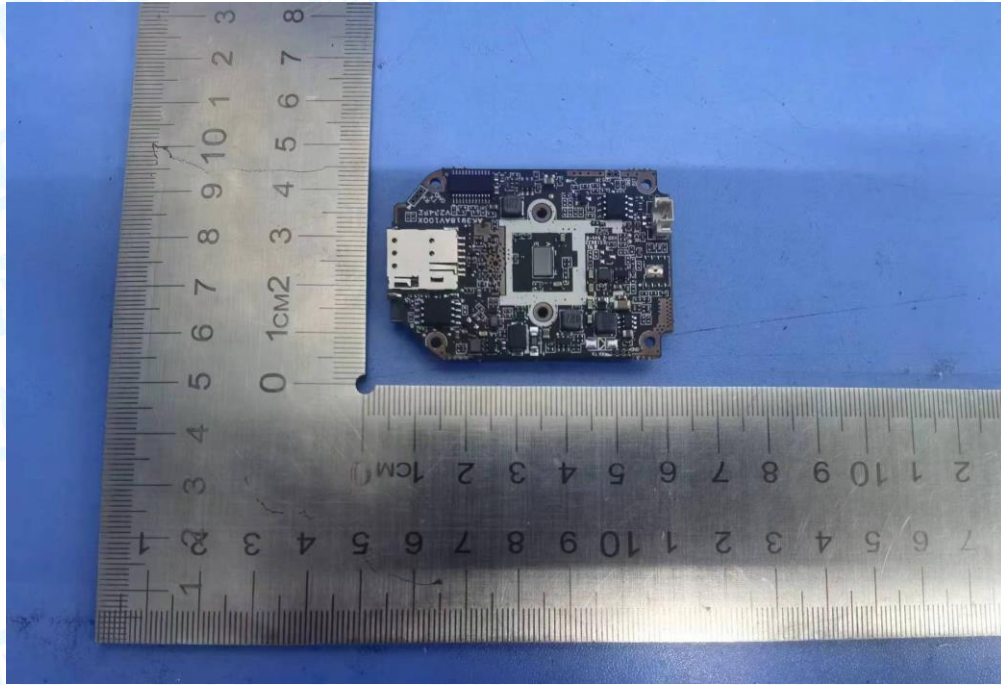


Photo 10 Appearance of PCB

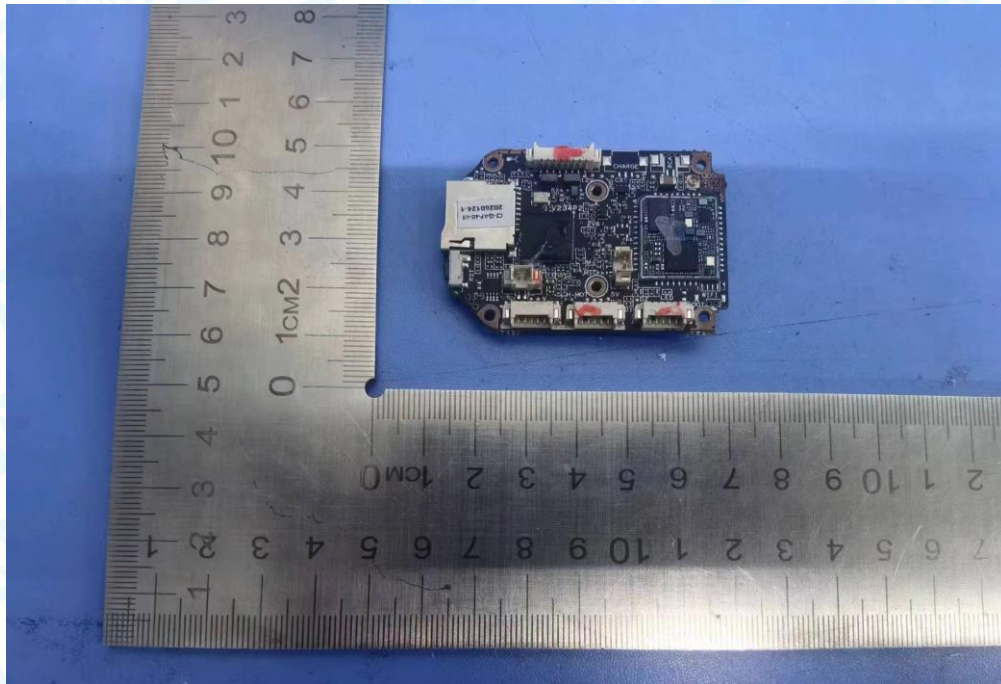


Photo 11 Appearance of PCB

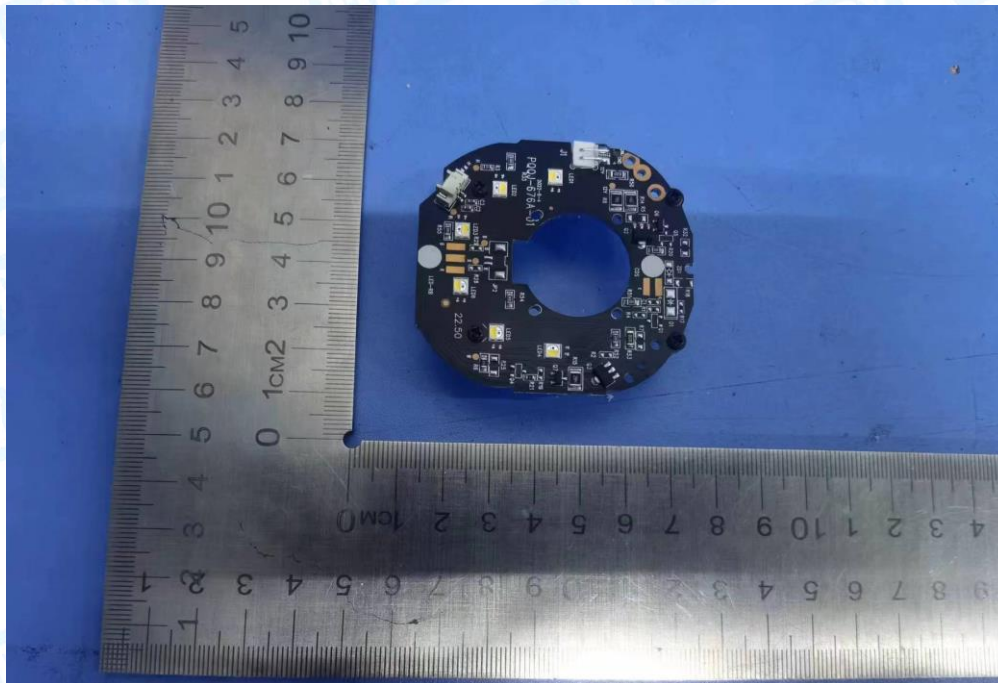
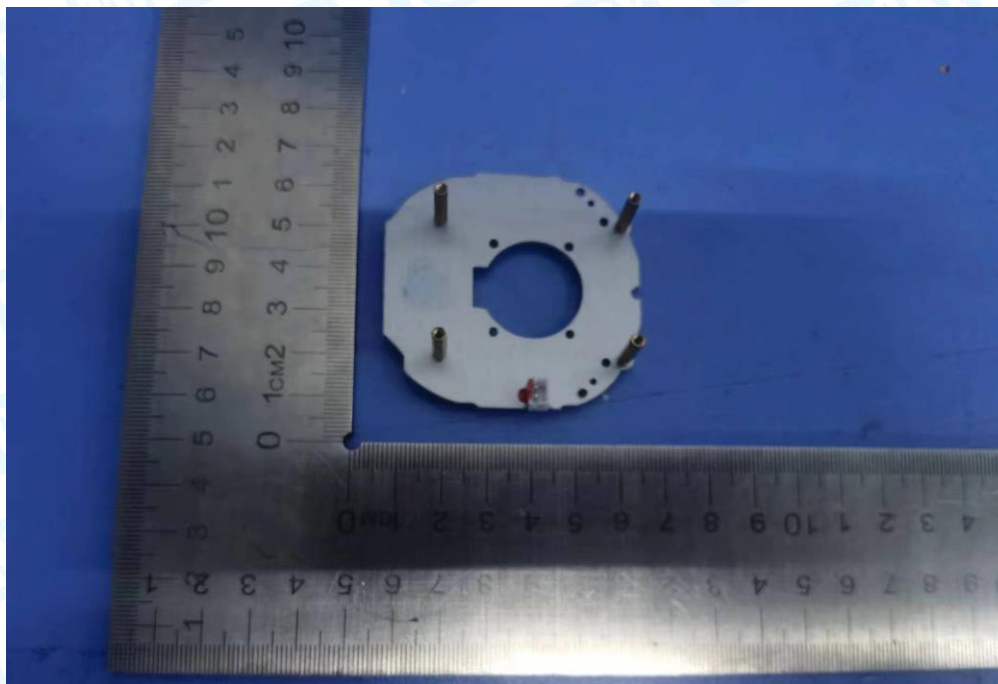


Photo 12 Appearance of PCB



Model: X20
Photo 1 Appearance of EUT



Photo 2 Appearance of EUT



Photo 3 Appearance of EUT



Photo 4 Internal of EUT

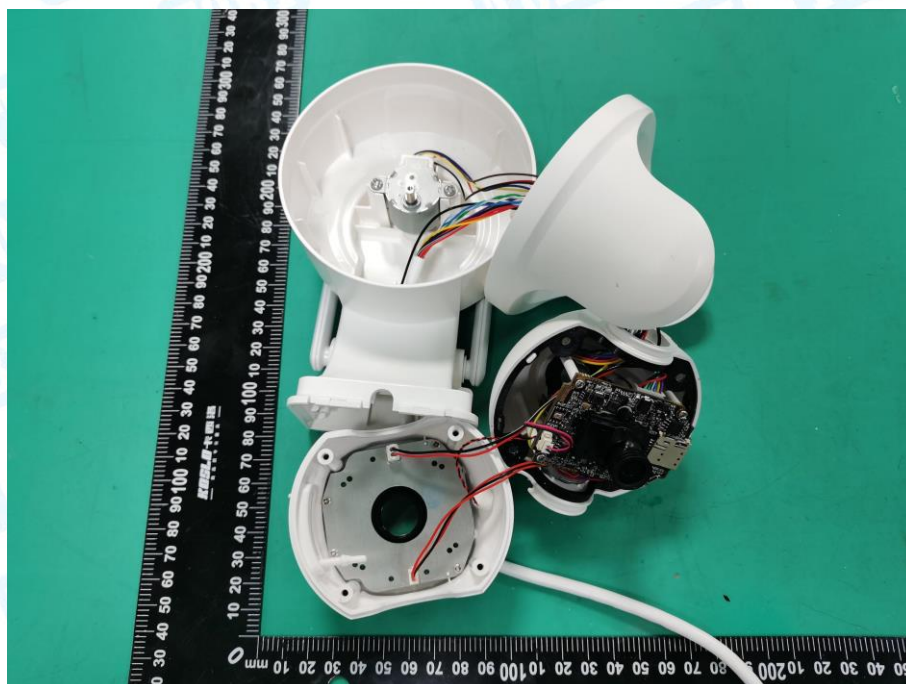


Photo 5 Internal of EUT



Photo 6 Appearance of PCB

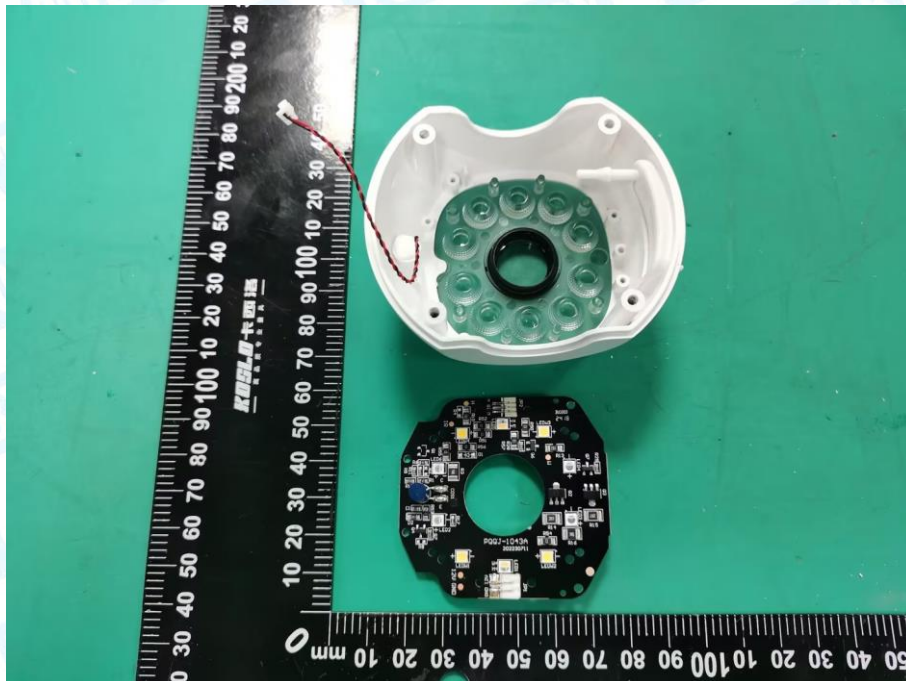


Photo 7 Appearance of PCB

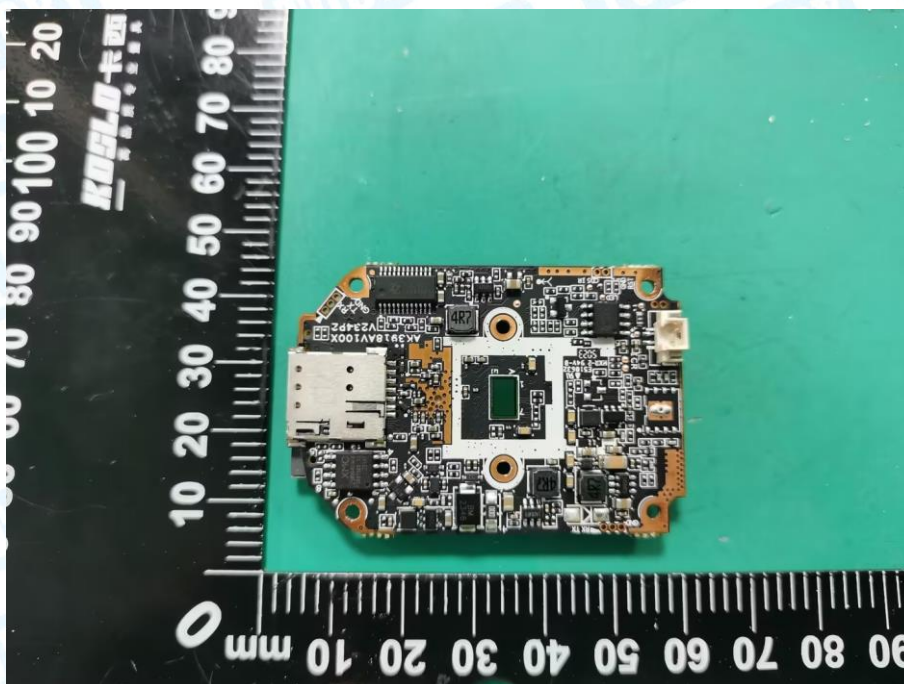
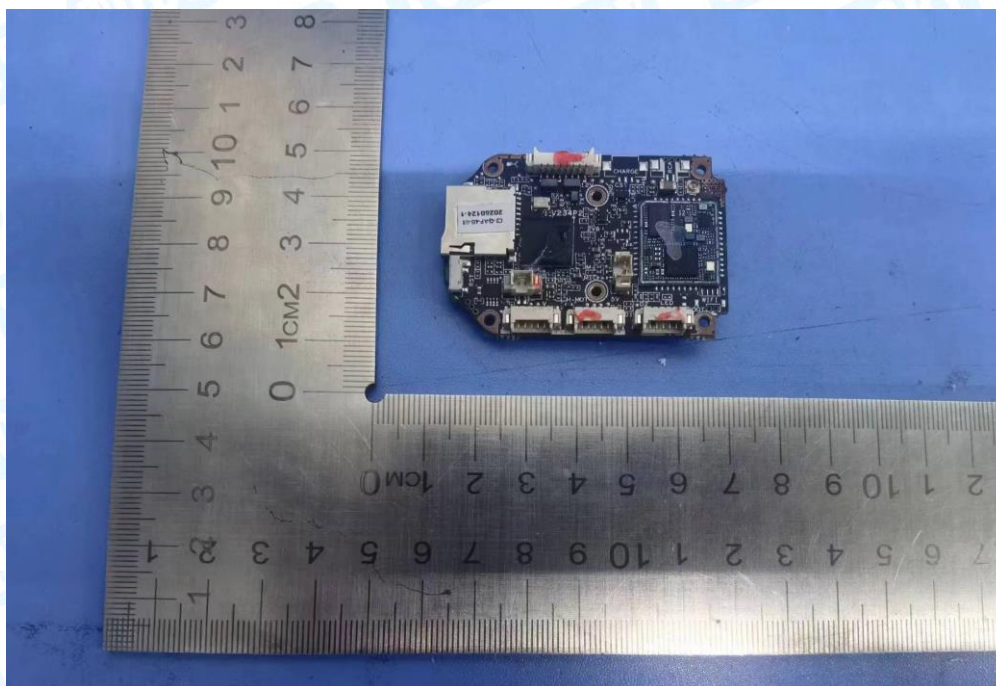
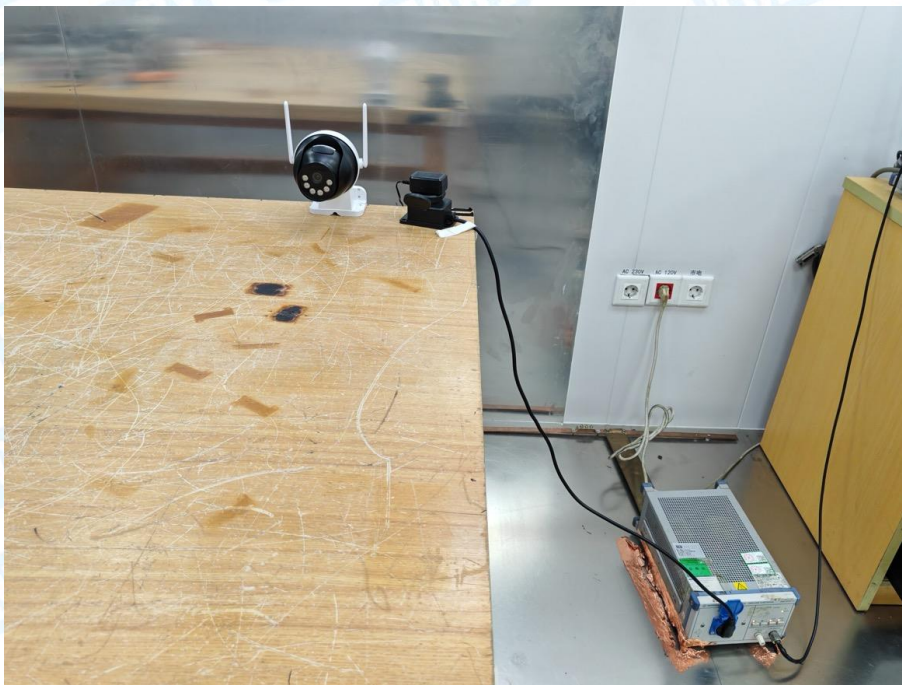


Photo 8 Appearance of PCB

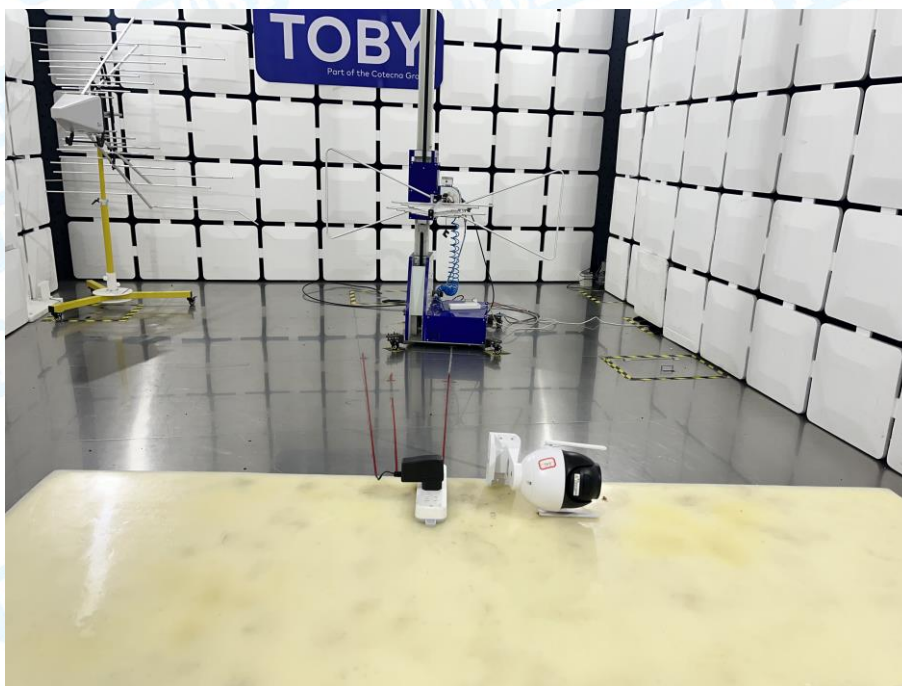


9. Photographs - Test Setup

Conducted Emission Test Setup



Radiated Emission Test Setup-Below 1G-X10



Radiated Emission Test Setup-Below 1G-X20

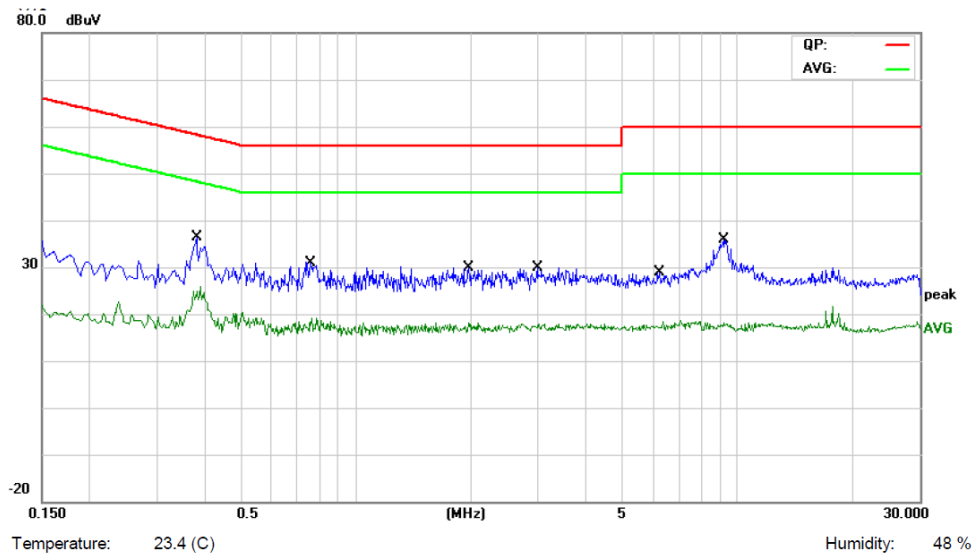


Radiated Emission Test Setup-Above 1G



Attachment A-- Conducted Emission Data (AC Mains)

Pressure:	1020 hPa
Test Voltage:	AC 120V/60Hz
Terminal:	Line
Test Mode:	Mode 1
Remark:	Only showed test data of the worst mode



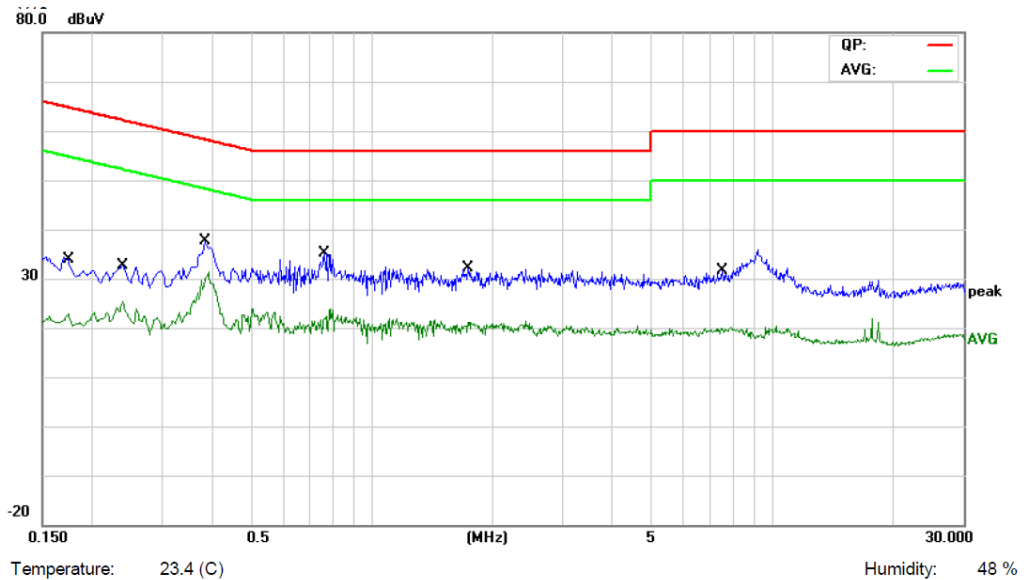
No.	Mk.	Freq. MHz	Reading Level dBuV	Correct Factor dB	Measure- ment dBuV	Limit dBuV	Over dB	Detector
1		0.3820	21.12	10.44	31.56	58.23	-26.67	QP
2	*	0.3820	13.70	10.44	24.14	48.23	-24.09	AVG
3		0.7620	14.78	10.26	25.04	56.00	-30.96	QP
4		0.7620	7.36	10.26	17.62	46.00	-28.38	AVG
5		1.9740	11.95	10.31	22.26	56.00	-33.74	QP
6		1.9740	6.15	10.31	16.46	46.00	-29.54	AVG
7		2.9780	12.00	10.64	22.64	56.00	-33.36	QP
8		2.9780	6.12	10.64	16.76	46.00	-29.24	AVG
9		6.2419	10.98	10.68	21.66	60.00	-38.34	QP
10		6.2419	5.89	10.68	16.57	50.00	-33.43	AVG
11		9.1699	18.48	10.93	29.41	60.00	-30.59	QP
12		9.1699	6.51	10.93	17.44	50.00	-32.56	AVG

Remark:

1. Corr. Factor (dB) = LISN Factor (dB) + Cable Loss (dB)

2. Margin (dB) = QuasiPeak/Average (dBuV) - Limit (dBuV)

Pressure:	1020 hPa
Test Voltage:	AC 120V/60Hz
Terminal:	Neutral
Test Mode:	Mode 1
Remark:	Only showed test data of the worst mode



No.	Mk.	Freq. MHz	Reading Level dBuV	Correct Factor dB	Measure- ment dBuV	Limit dBuV	Over dB	Detector
1		0.1758	17.13	10.37	27.50	64.68	-37.18	QP
2		0.1758	8.43	10.37	18.80	54.68	-35.88	AVG
3		0.2380	16.84	10.41	27.25	62.16	-34.91	QP
4		0.2380	12.38	10.41	22.79	52.16	-29.37	AVG
5		0.3820	20.99	10.36	31.35	58.23	-26.88	QP
6	*	0.3820	13.59	10.36	23.95	48.23	-24.28	AVG
7		0.7620	14.51	10.54	25.05	56.00	-30.95	QP
8		0.7620	6.95	10.54	17.49	46.00	-28.51	AVG
9		1.7420	13.11	10.16	23.27	56.00	-32.73	QP
10		1.7420	6.55	10.16	16.71	46.00	-29.29	AVG
11		7.4899	11.45	10.93	22.38	60.00	-37.62	QP
12		7.4899	5.92	10.93	16.85	50.00	-33.15	AVG

Remark:

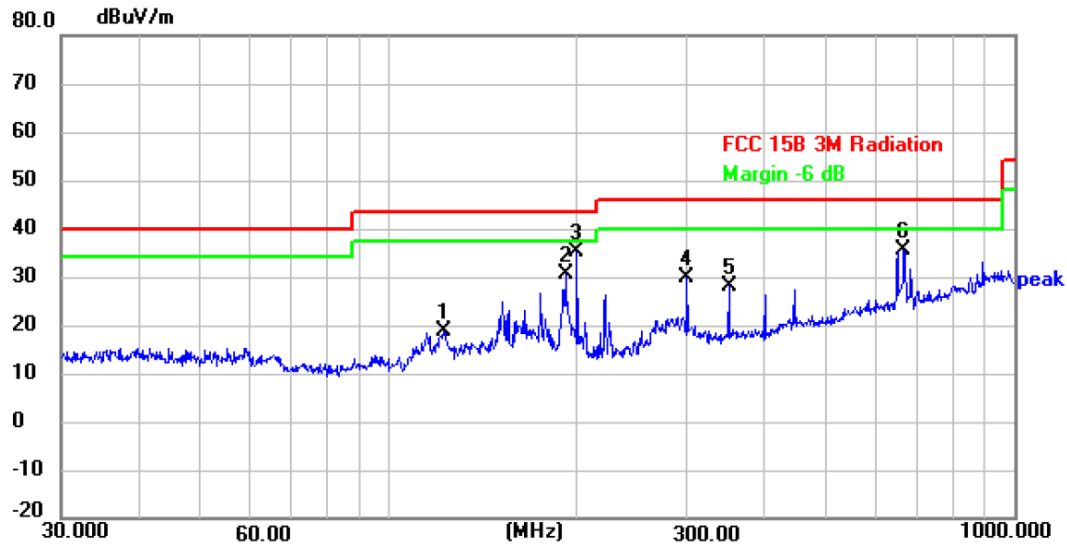
1. Corr. Factor (dB) = LISN Factor (dB) + Cable Loss (dB)

2. Margin (dB) = QuasiPeak/Average (dBuV) - Limit (dBuV)

Attachment A--Radiated Emission Test Data

----Below 1G

Test Voltage:	AC 120V/60Hz
Ant. Pol.	Horizontal
Test Mode:	Mode 1 (X10)
Remark:	Only showed test data of the worst mode.



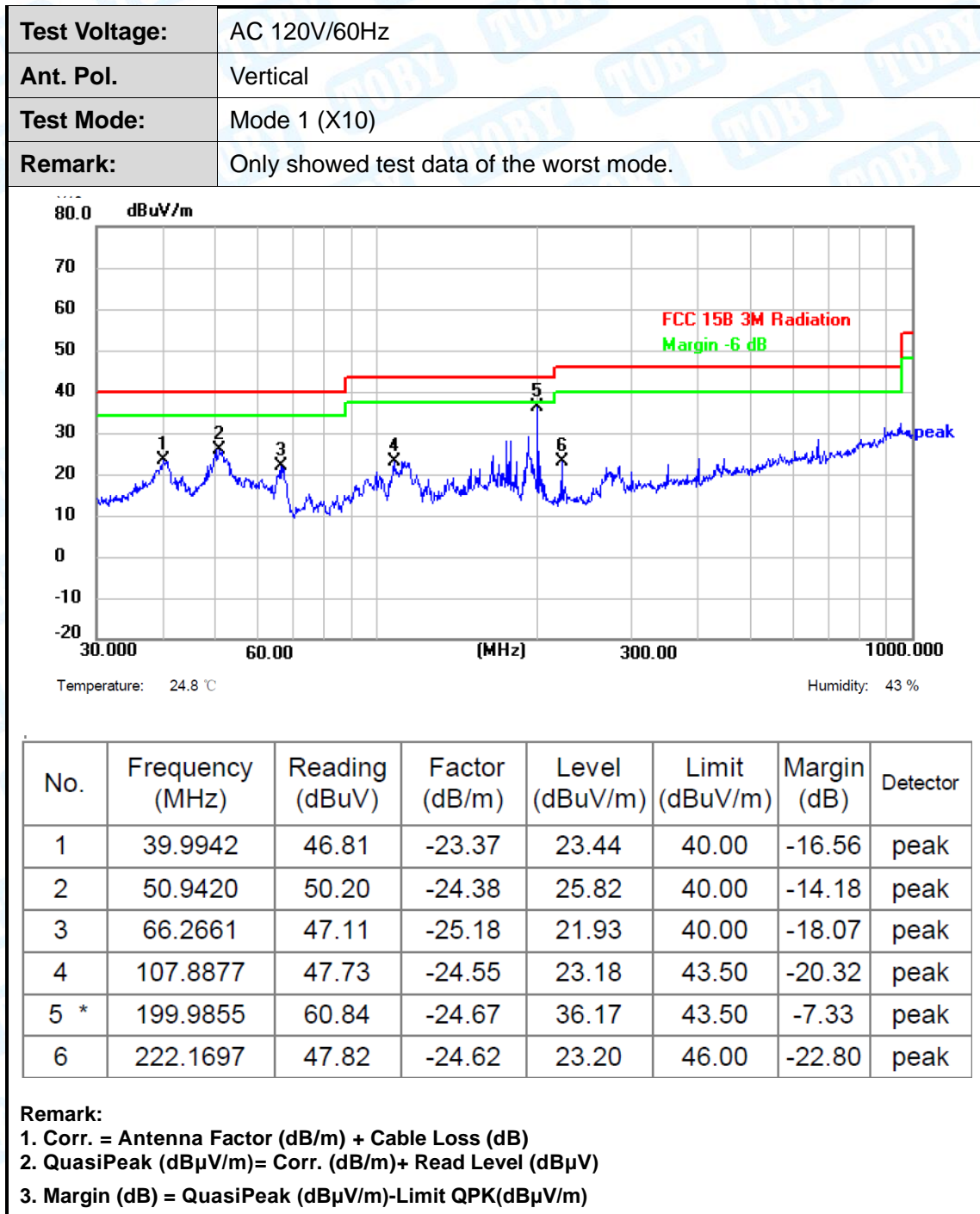
Temperature: 24.8 °C

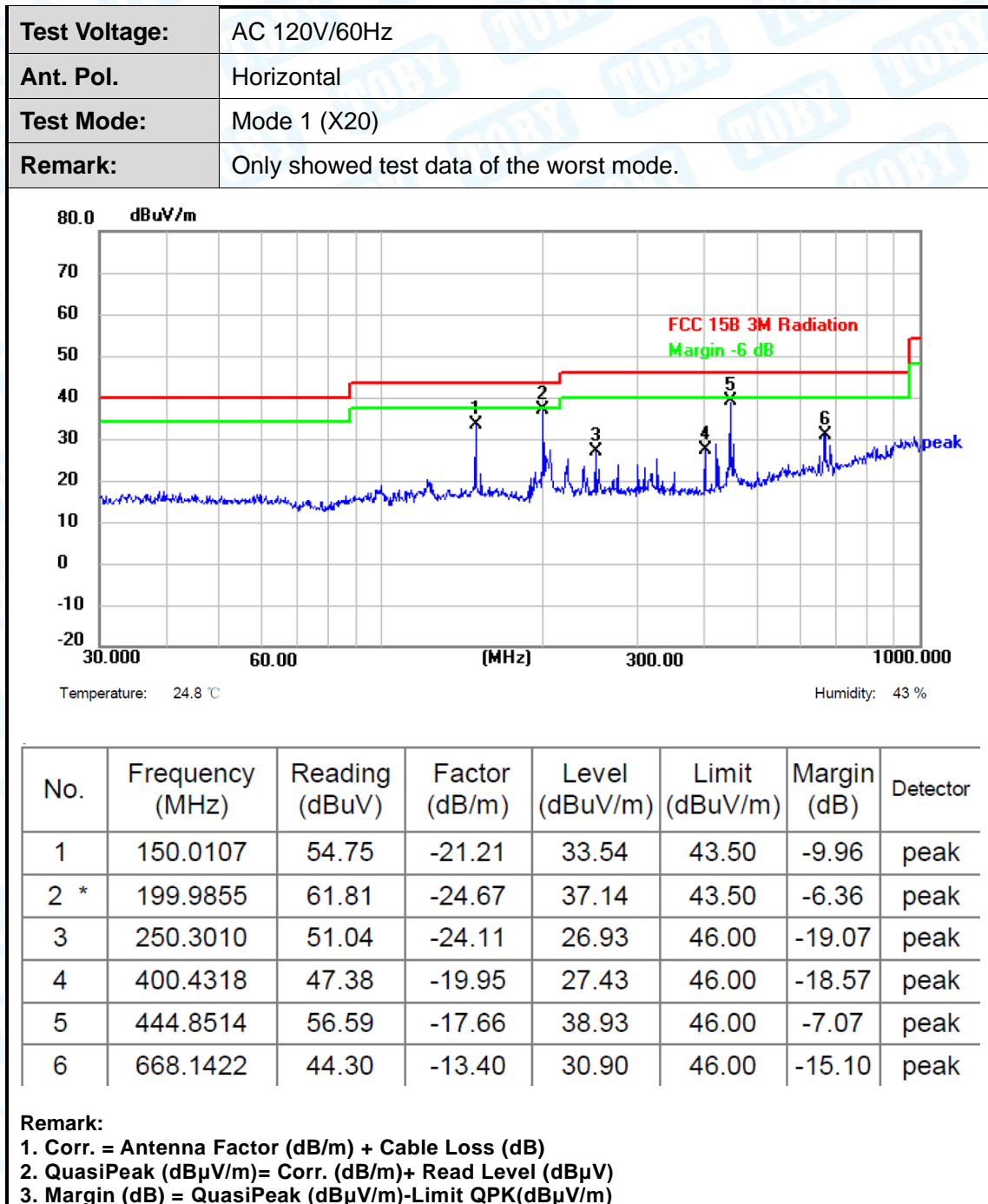
Humidity: 43 %

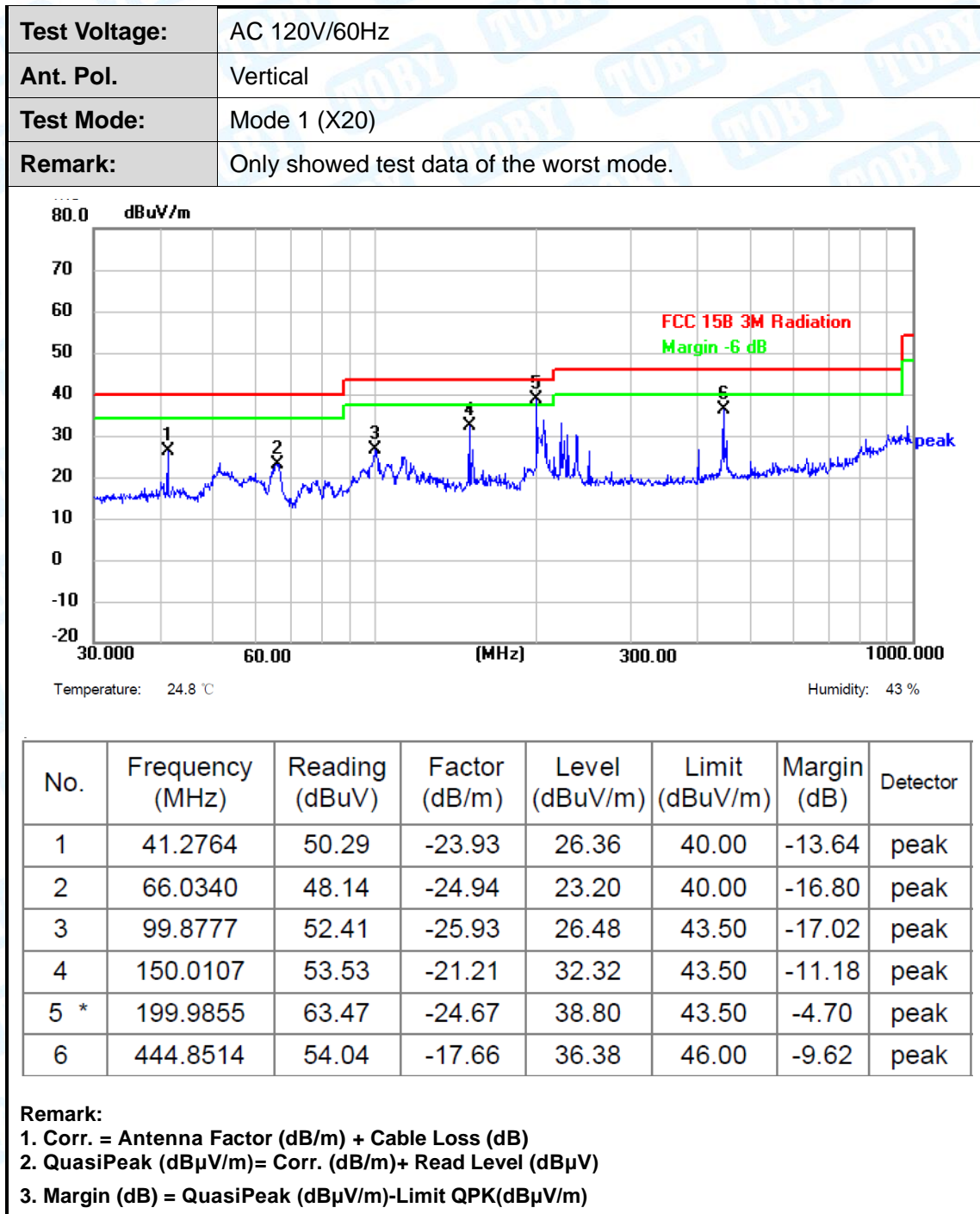
No.	Frequency (MHz)	Reading (dBuV)	Factor (dB/m)	Level (dBuV/m)	Limit (dBuV/m)	Margin (dB)	Detector
1	122.8340	42.18	-23.44	18.74	43.50	-24.76	peak
2	191.7450	55.01	-24.46	30.55	43.50	-12.95	peak
3 *	199.9855	60.02	-24.67	35.35	43.50	-8.15	peak
4	300.3672	51.09	-21.18	29.91	46.00	-16.09	peak
5	350.4767	47.73	-19.87	27.86	46.00	-18.14	peak
6	665.8034	49.70	-14.29	35.41	46.00	-10.59	peak

Remark:

1. Corr. = Antenna Factor (dB/m) + Cable Loss (dB)
2. QuasiPeak (dBμV/m)= Corr. (dB/m)+ Read Level (dBμV)
3. Margin (dB) = QuasiPeak (dBμV/m)-Limit QPK(dBμV/m)

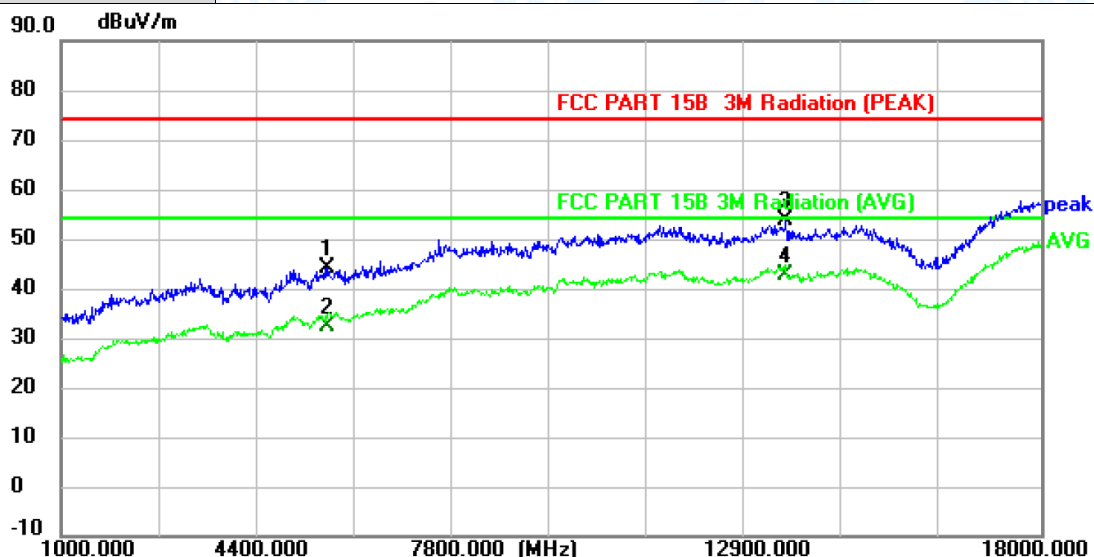






---- Above 1G

Test Voltage:	AC 120V/60Hz
Ant. Pol.	Horizontal
Test Mode:	Mode 1
Remark:	Only showed the worst test data.



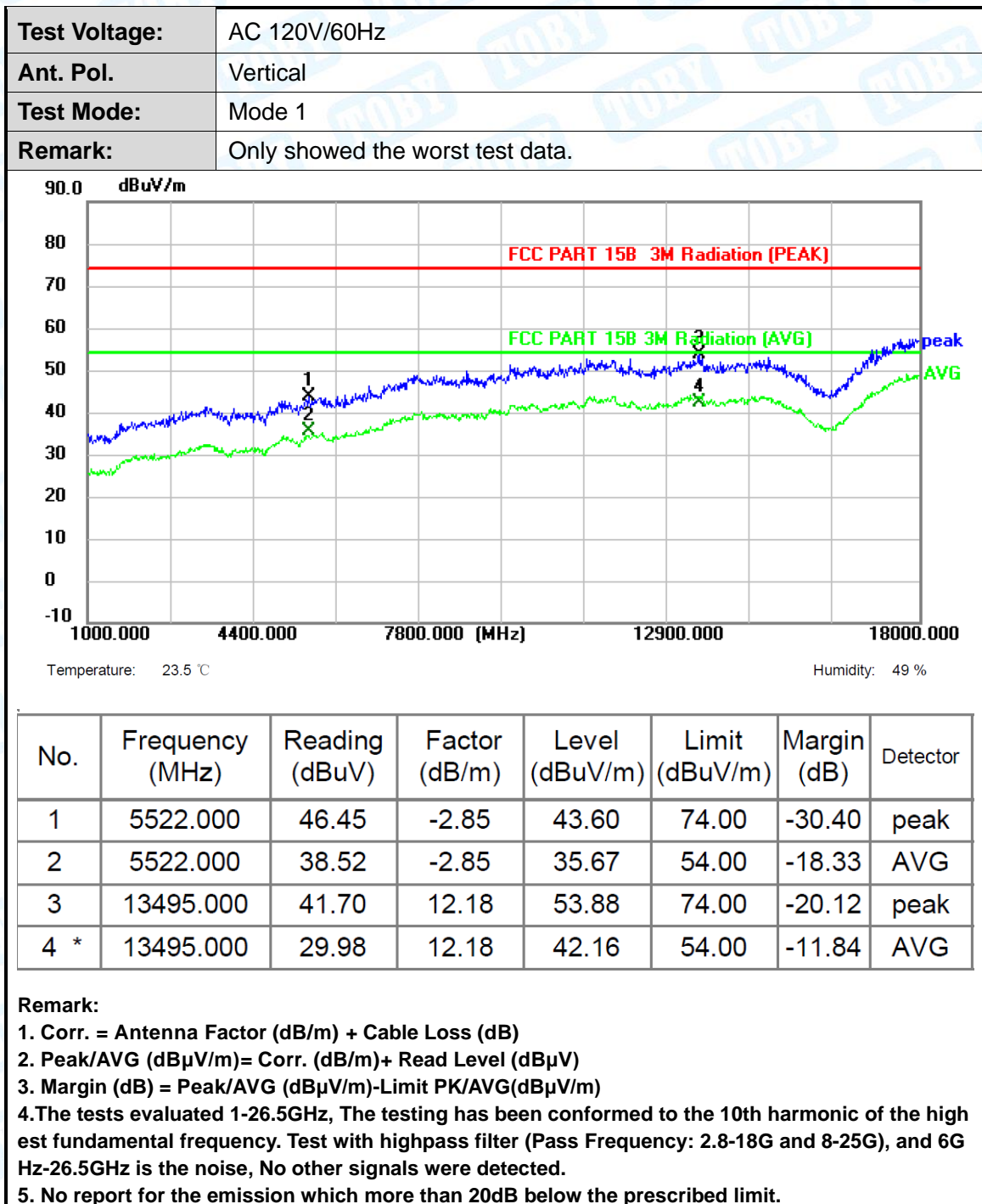
Temperature: 23.5 °C

Humidity: 49 %

No.	Frequency (MHz)	Reading (dBuV)	Factor (dB/m)	Level (dBuV/m)	Limit (dBuV/m)	Margin (dB)	Detector
1	5624.000	47.18	-2.93	44.25	74.00	-29.75	peak
2	5624.000	35.38	-2.93	32.45	54.00	-21.55	AVG
3	13580.000	41.39	12.25	53.64	74.00	-20.36	peak
4 *	13580.000	30.38	12.25	42.63	54.00	-11.37	AVG

Remark:

1. Corr. = Antenna Factor (dB/m) + Cable Loss (dB)
2. Peak/AVG (dBuV/m) = Corr. (dB/m) + Read Level (dBuV)
3. Margin (dB) = Peak/AVG (dBuV/m) - Limit PK/AVG (dBuV/m)
4. The tests evaluated 1-26.5GHz, The testing has been conformed to the 10th harmonic of the highest fundamental frequency. Test with highpass filter (Pass Frequency: 2.8-18G and 8-25G), and 6GHz -26.5GHz is the noise, No other signals were detected.
5. No report for the emission which more than 20dB below the prescribed limit.



-----END OF THE REPORT-----