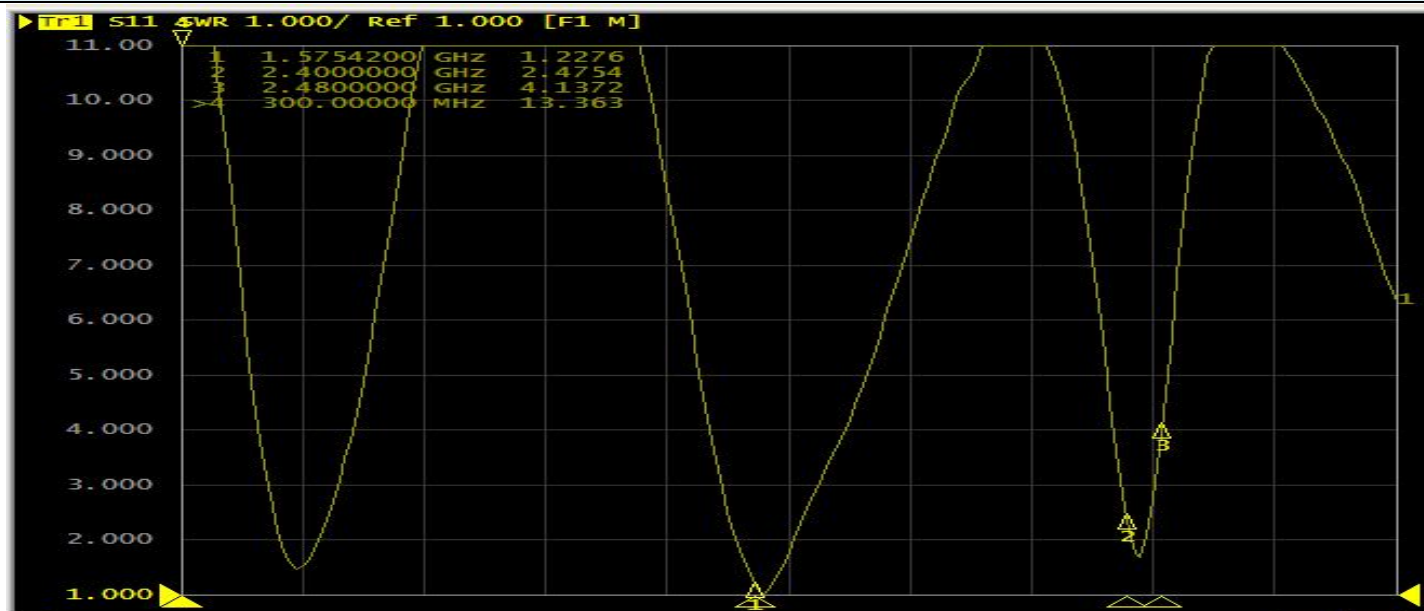


## CWR02G Antenna Report

Antenna manufacturername	Shenzhen Yusheng CommunicationEquipmentCo., Ltd
Antenna manufactureraddress	407-411, 4th Floor, Building 2, South Taiyun ChuangguPark, southeast of the intersection of
ANT TYPE	Composite antenna
ANT NAME	CWR02G

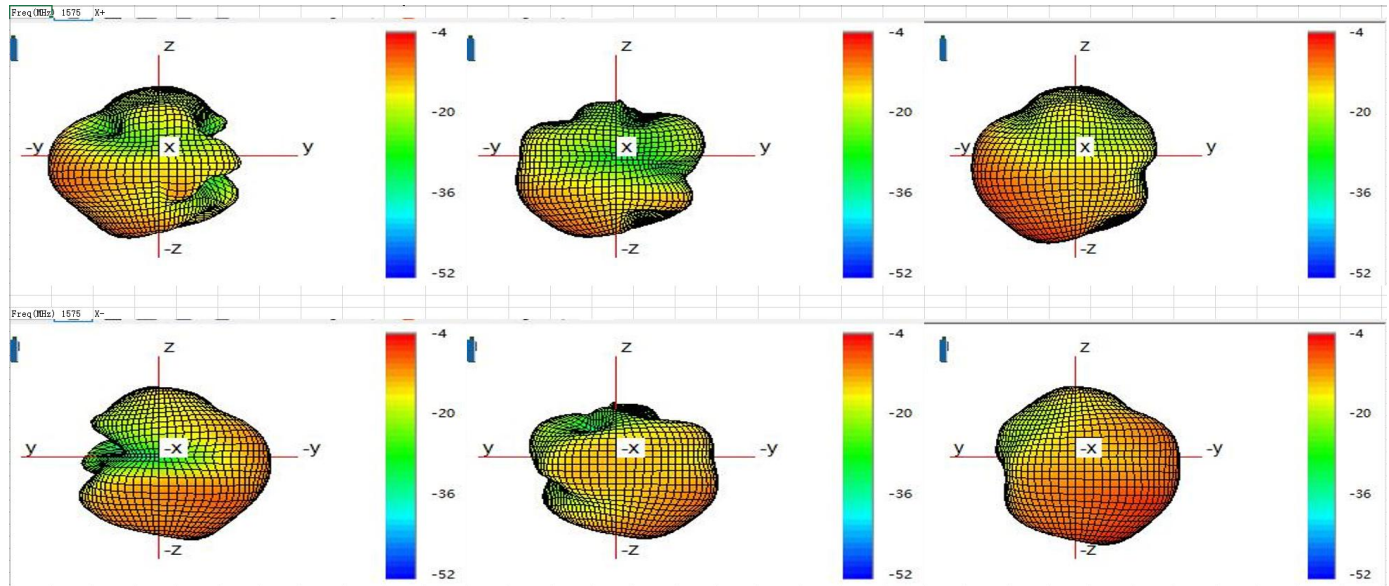
### GPS/BT Passive graph



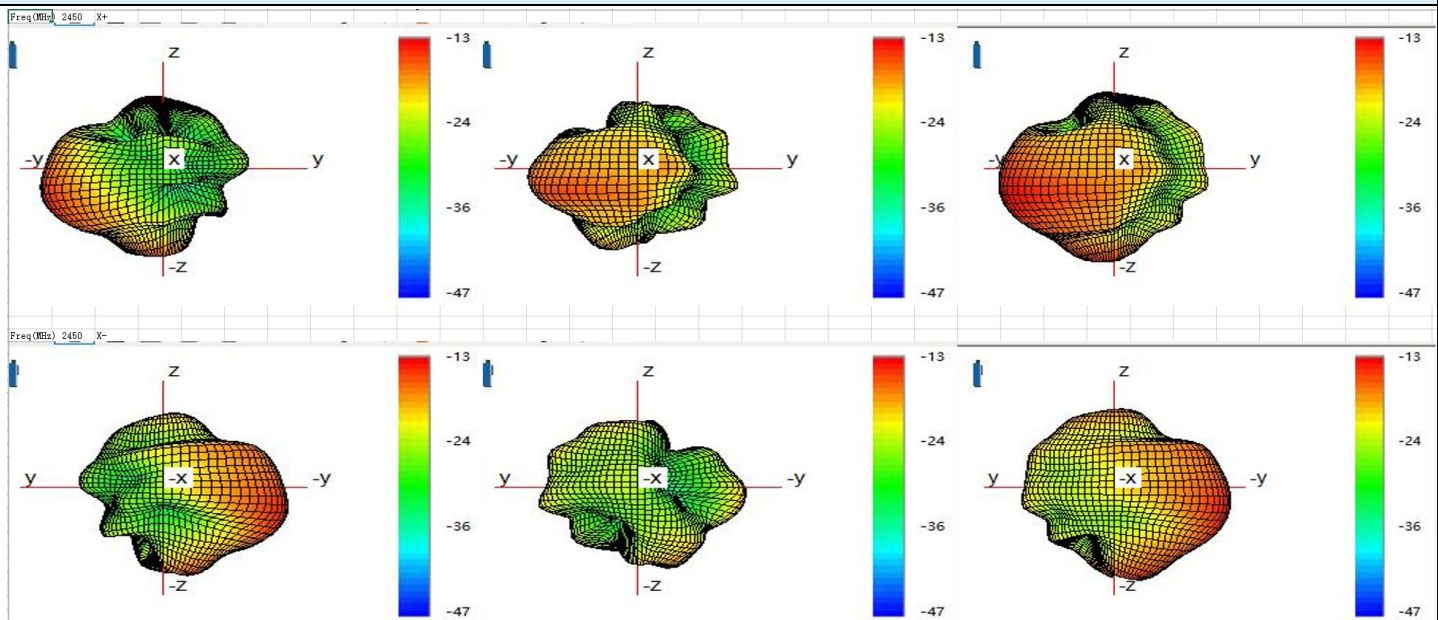
### Test of antenna efficiency parameters

	frequency point	efficiency%	efficiency/db	gain/dBi		frequency point	efficiency%	efficiency/db	gain/dBi
BT Arm	2400	4%	-13.7	-4.5	GPS Arm	1550	3%	-15.1	-4.4
	2410	4%	-13.6	-4.7		1555	4%	-13.9	-4.5
	2420	5%	-12.8	-4.4		1560	4%	-13.9	-4.4
	2430	5%	-12.7	-4.3		1565	5%	-12.8	-4.3
	2440	5%	-12.8	-4.2		1570	6%	-12.1	-4.3
	2450	6%	-12.1	-4.1		1575	7%	-11.4	-4.2
	2460	5%	-12.7	-4.1		1580	6%	-12.1	-4.1
	2470	5%	-13.1	-4.1		1585	5%	-12.8	-4.2
	2480	5%	-13.2	-4.4		1590	4%	-13.6	-4.3
	2490	4%	-13.7	-4.5					
	2500	4%	-14.2	-4.6					

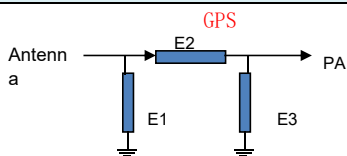
### 1575MHZ Passive direction diagram/field pattern diagram



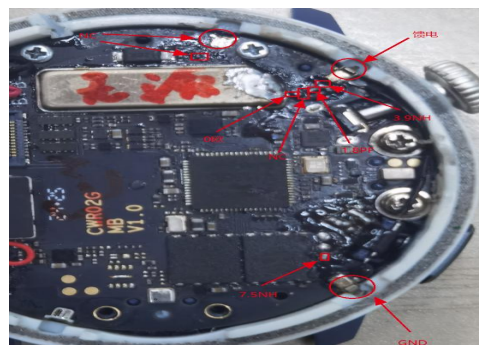
2450MHZ Passive direction diagram/field pattern diagram



GPS match

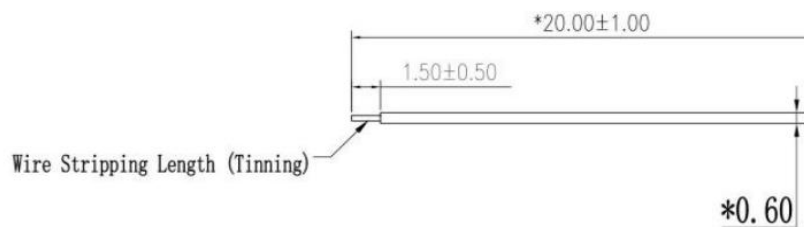
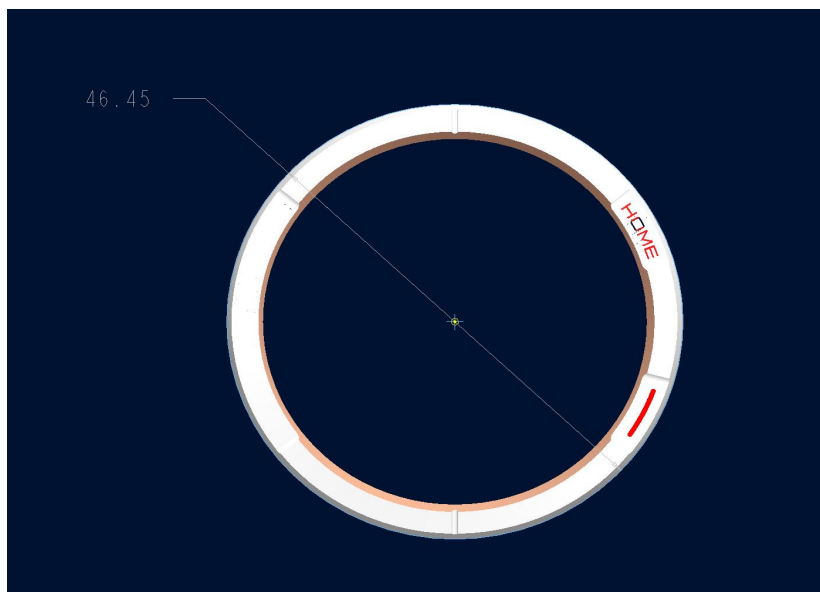


Element	Value
E1(0201)	3.9NH
E2(0201)	1.8PF
E3(0201)	NC

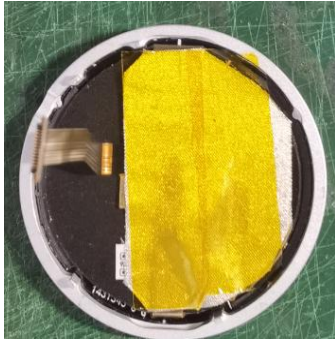


Antenna  
size

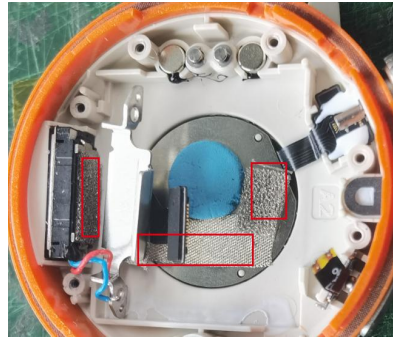
46.45mm



Environmental treatment



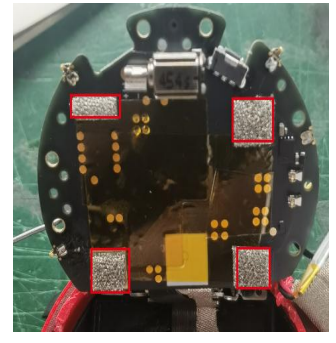
1, conductive cloth



2, horn magnetic steel and horn and heart



3, conductive cloth shielding battery



4, the motherboard plus four sponges and battery grounding

### BT Bluetooth cycloid



### Antenna test environment



summarize

1, environmental treatment grounding according to the figure above:

- (1) conductive cloth shield battery
- (2) Heart rate small plate iron sponge grounding
- (3) horn magnetic steel and horn iron plate grounding

2, motherboard matching:

- (1) 2 point feed, the main circuit and 3.9NH, series 1.8PF. At 5 points, the ground is 7.5NH, and other GND is processed with NC