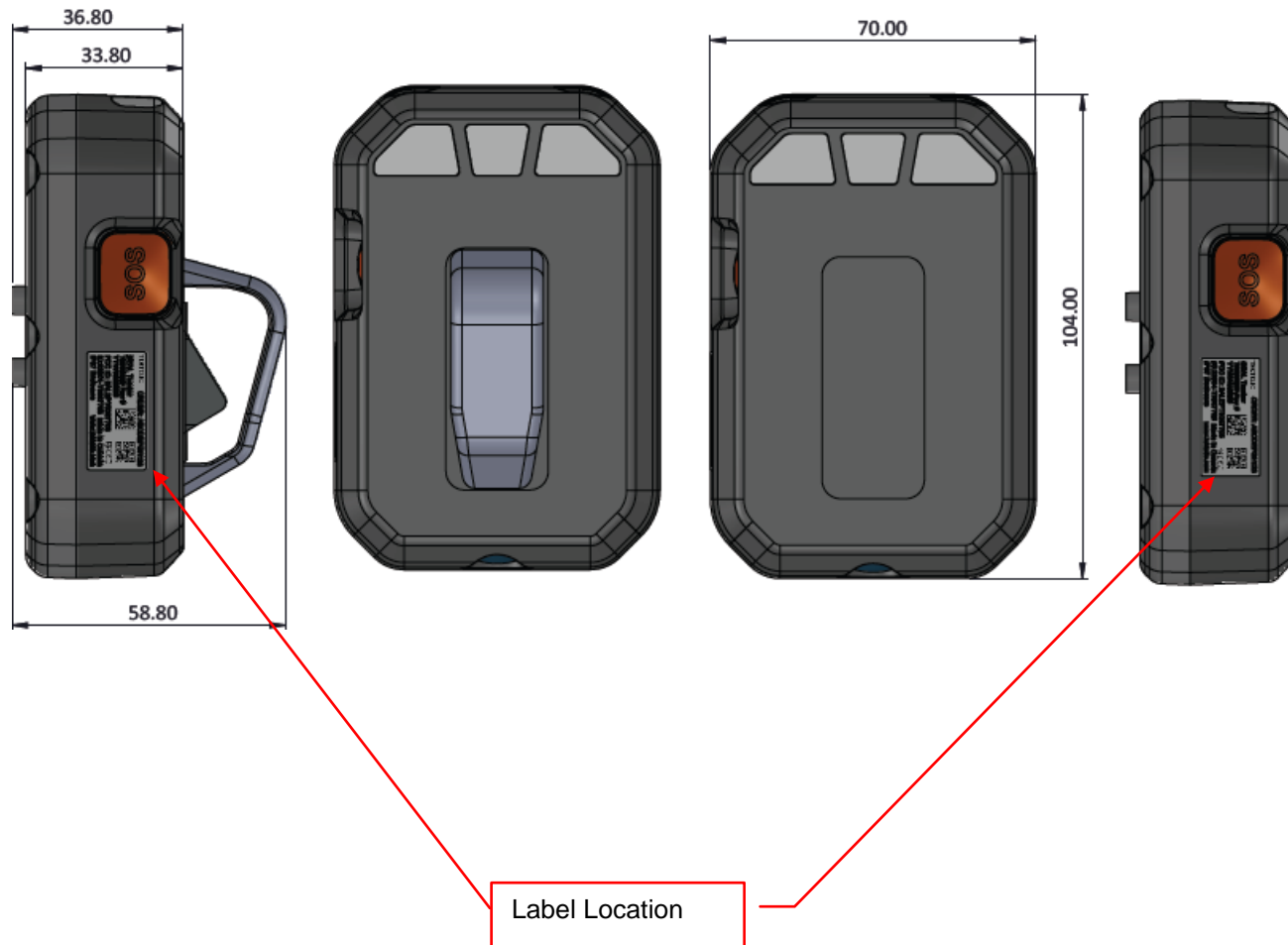


FCC ID: 2ALEPT0007705
IC: 22504-T0007705

Labels & Label Location



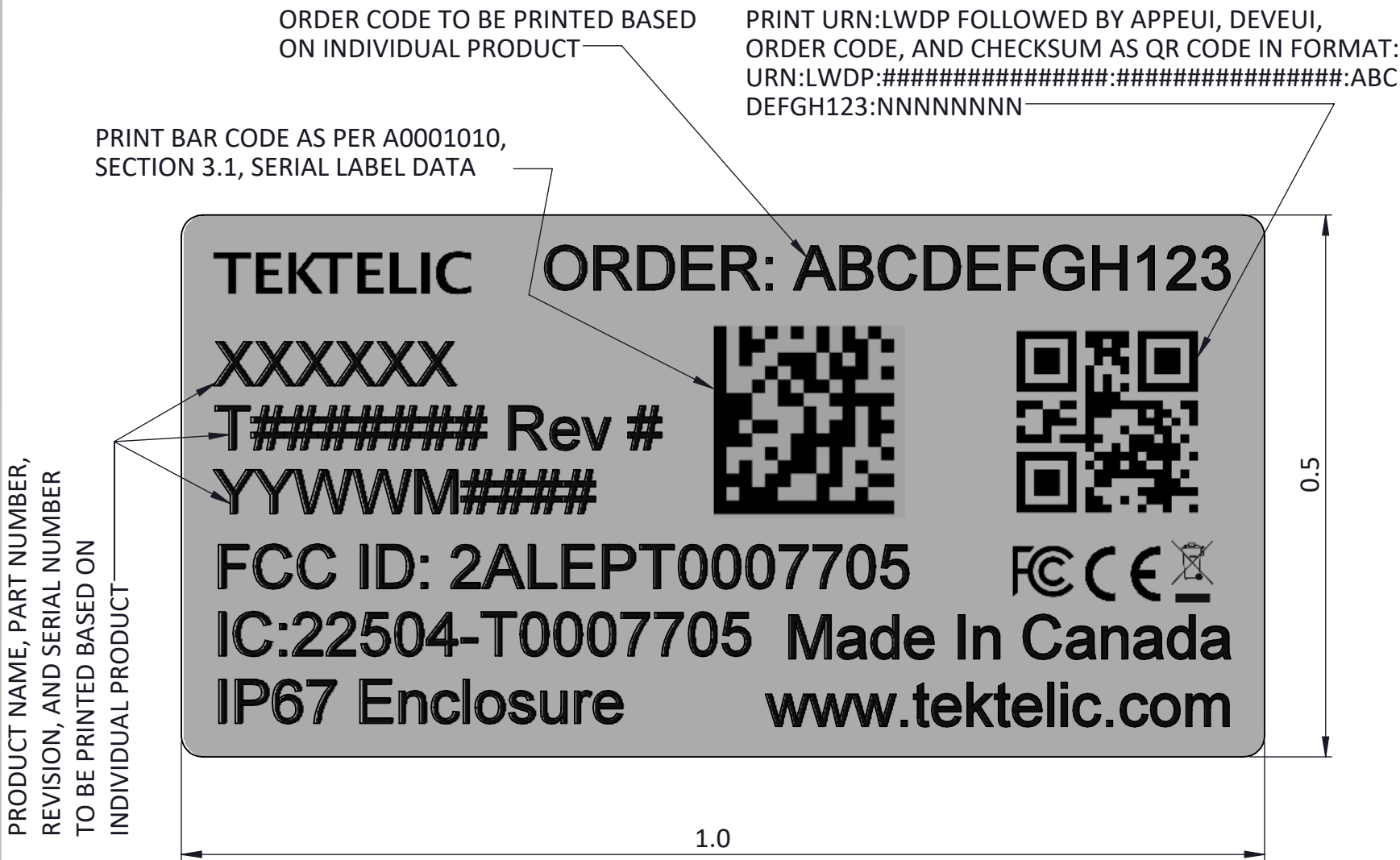
NOTES:

1. ALL DIMENSIONS IN MM [INCHES]
UNLESS OTHERWISE SPECIFIED TOLERANCES ARE:
DIMENSIONS: X ± 0.5
X.X ± 0.25
X.XX ± 0.1
X.XXX ± 0.05
ANGLES: $\pm 0.1^\circ$

REVISIONS		
REV.	DESCRIPTION	DATE
A		08-Sep-2023

SAFETY AND REGULATORY LABEL

- SIZE: 1.00"X0.50"
- FONT: ARIAL REGULAR, 4 POINTS
- TEXT AND LAYOUT AS SHOWN BELOW



NOTES:

1. DRAWING DIMENSIONS ARE FOR REFERENCE AND INSPECTION ONLY. THE ASSOCIATED 3D CAD FILE IS THE PRIMARY DIMENSION REFERENCE.
2. ALL DIMENSIONS IN INCHES [MM]
3. UNLESS OTHERWISE SPECIFIED TOLERANCES ARE:
DIMENSIONS:
 - X ± 0.02
 - X.X ± 0.01
 - X.XX ± 0.005
 - ANGLES: $\pm 0.5^\circ$
4. MATERIAL: ZEBRA TECHNOLOGIES, Z-XTREME 4000T WHITE ZULTIMATE 3000T WHITE, OR APPROVED EQUIVALENT.
5. PRINTER RIBBON: ZEBRA TECHNOLOGIES, 5095 HIGH PERFORMANCE RESIN, OR APPROVED EQUIVALENT.
6. PRINT TEXT, SYMBOL, AND 2D BARCODE WITH ZEBRA TECHNOLOGIES PRINTING SYSTEM, COLOR: BLACK.
7. ALL MATERIALS, FINISHES AND MANUFACTURING PROCESSES SHALL BE COMPLIANT WITH EU RoHS DIRECTIVES 2011/65/EU and (EU) 2015/863
8. ALL MATERIALS AND FINISHES SHALL BE COMPLIANT WITH EU DIRECTIVE EC/1907-2006 (REACH) AND THE CURRENT LIST OF SvHC
9. THIS PRODUCT SHALL BE BUILT TO THE REQUIREMENTS LISTED IN TEKTELIC PRODUCT WORKMANSHIP STANDARD A0001043.



TITLE:
LABEL, SAFETY & REGULATORY, SEAL

DWG NO.	REVISION	SIZE
T0008804	A	A3
SCALE:7:1		SHEET 1 OF 3



MODULE, SEAL Ex



MODULE, SEAL



MODULE, SEAL Ex, CLIP SAFETY



MODULE, SEAL, CLIP SAFETY

TITLE: LABEL, SAFETY & REGULATORY, SEAL		
DWG NO. T0008804	REVISION A	SIZE A3
SCALE:5:1		SHEET 2 OF 3