

Bluetooth 4.0
Stereo Headphone
KBJ-229N

User's Manual



Thank you for selecting our latest Bluetooth headphone, please read this User's Manual carefully before you operate this headphone, and please save this Manual for further reference. Before operating, please read all the Safety notice to make sure the safe and appropriate use.



Safety Notice:

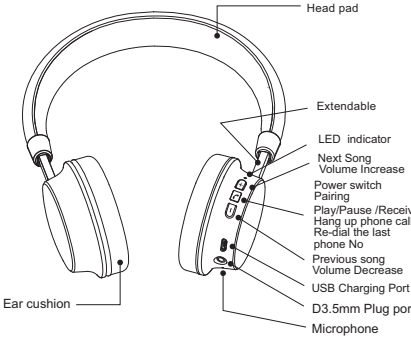
- Please observe the rules of the Country or Region which you are in while driving.
- Do not disassemble or modify the headphone at any reason, otherwise, It may damage or burn the headphone.
- If there is any quality problem, please send the headphone to authorized service center for repairing.
- Please keep the equipment along with all the accessories out of the reach of children and pets. It will cause suffocation and serious injury.
- Do not put the device under the environment which the temperature is too low or too high (Below 0℃ or over 45℃).
- Extreme temperatures will cause the device deformation, reduce the charging capacity and shorten the working life.
- Please do not wet the device, for the liquid can cause serious damage to the device. Please do not touch the device by wet hands. It is out of the maintenance range for the damage caused by water.
- Please avoid closing to the eyes of children and pets when using the flash indicator of the device.
- Please do not operate the device in thunderstorm weather.



It will damage your hearing if you listen with high volume for a long time. It is recommended that only use the lowest volume which is necessary for speaking and listening to music.

1. Guide

■ Headphone introduction



※ Contents: Bluetooth Headphone, USB Charging Cable, 3.5mm Audio Cable, User's Manual

USB Charging Cable:




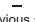


3.5mm Audio Cable:



2.Instruction

■ Key Function

 Power switch Pairing	Switch on : Press 2 seconds to switch on , the Blue indicator will be in (It will appear voice prompts in English). Press 2 seconds again to enter into pairing mode, meanwhile the red and blue indicators take turns to flash. It will turn off automatically when no device to connect in 5 mins) . Switch off : Press 4 seconds to switch off , the Red indicator flashes one time means the device is switched off.
 Play/Pause Receive Hang up phone call Re-dial the last phone No	Press "Function Key" to receive phone call, press it again to end the phone call. Press the key for 2 seconds to reject the phone call. Press the key by twice continuously to re-dial the last phone number. In Music Mode, press it for 1 time to pause, and press it again to play, (when phone call comes, the music will be off. When phone call is off, the music will continue).
 + Next Song Volume Increase	In Music Mode, press it to play next song. Long press to increase volume all the time. The voice prompts will appear when the volume up to Maximum.
 - Previous song Volume Decrease	In Music Mode, press it to play previous song. Long press to decrease volume all the time.

■ Voice Prompt Function

VOICE PROMPT	STATUS
Bluetooth is turned on	When you turn the headphone on
Bluetooth enter pairing mode	When entering into paring mode
Bluetooth is connected	When you connect the first mobile phone
Bluetooth is connected	When you connect the second mobile phone
Volume max	When the volume up to the maximum
Bluetooth is turned off	When you turn the headphone off
Battery low	Battery low warning

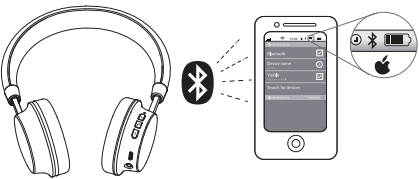
■ How to connect with two Bluetooth mobile phones:

- (1) Turn on the bluetooth function of mobile phone 1.
- (2) Press the " " for 4 seconds of the bluetooth headphone, switch on and enter into pairing mode, blue and red indicators take turns to flash, make connection with phone 1.
- (3) press the " " again for 2.5 seconds, the red and blue indicators take turns to flash and searching connections automatically; meanwhile, phone 1 is disconnected.
- (4) Turn on the bluetooth function of the mobile phone 2 and search KBJ-229N from the list, make connection.(Input the password 0000 if needed and the connection will be made)
- (5) Turn off the bluetooth headphone and return on, the headphone will connect with both mobile phones automatically. The voice "Bluetooth is connected, bluetooth is connected" will appear in English.

※ When the headphone is connected with two mobile phones, some functions of the mobile phones cannot work normally.

3. Battery power of bluetooth headphone displayed on Iphone

※ After connected with Iphone, the battery power bar of the headphone will be displayed on the phone.



4. Bluetooth Indicator Status

Work Status	Indicator Light Status	Remark
Switch on	Blue indicator flash 3 times	Voice Prompts
Switch off	Red indicator flash 1 time	Voice Prompts
Pairing	Red and blue indicators take turns to flash	Voice Prompts
Connection	Blue indicator will flash 1 time every 6 seconds	Voice Prompts
Phone call	Blue indicator will flash 1 time every 6 seconds	
Play Music	Blue indicator will flash 1 time every 6 seconds	
Battery low warning	Red indicator will flash 1 time every 60 seconds	Voice Prompts
Charging	Red indicator is on all the time when charging	

5.Headphone Charging

This headphone is equipped with built-in non-detachable and rechargeable battery. Please make sure that the battery is charged full for the first time use.

- Connect the charger to the charging port.

- Insert the charger into the standard power outlet. During the charging, indicator will turn to Red. If without charging, please plug out the travel charger first, then connect it again.
- After full charging, red indicator will be off. Please plug out the travel charger from the power outlet and headphone.
- It will reduce the battery performance after long time / repeatable charge and dis-charge.
- And it is normal phenomenon for all the rechargeable battery. Please do not dial or receive phone call during charging, and please plug out the charger from the headphone, then receive the phone call. When the battery is low, the headphone will appear the prompt and the red indicator will flash.

※ If the headphone shut down without battery during the phone calls, it will switch to mobile phone automatically.

6. Audio cable connection

Line Insert 3.5mm audio cable into headphone 3.5mm plug port, the other part into audio output device(MP3/PC), then you can enjoy music. When the bluetooth headphone is on, the bluetooth function will be preferred although insert audio cable.

7.Project Specification and Instruction

- Bluetooth Version : 4.0 (CSR8635)
- Supported devices: Bluetooth mobile phones, Bluetooth speakers Bluetooth PC and other Bluetooth devices
- Maximum work range: 33 Feet (10 Meters)
- Talk time: 12 Hours
- Music play: 10 Hours
- Charging time: 2 Hours
- Charging Voltage: DC 5V
- Work Voltage: 3.7V
- Sensitivity: 97±3dB
- Battery Capacity:300mAh
- Frequency Response: 2.402~2.480GHz

※ The actual time may vary from mobile phone types and functions.

Bluetooth 4.0
Stereo Headphone

NOTE: This equipment has been tested and found to comply with the limits for a Class B digital device, pursuant to part 15 of the FCC Rules. These limits are designed to provide reasonable protection against harmful interference in a residential installation. This equipment generates, uses and can radiate radio frequency energy and, if not installed and used in accordance with the instructions, may cause harmful interference to radio communications. However, there is no guarantee that interference will not occur in a particular installation. If this equipment does cause harmful interference to radio or television reception, which can be determined by turning the equipment off and on, the user is encouraged to try to correct the interference by one or more of the following measures:

- Reorient or relocate the receiving antenna.
- Increase the separation between the equipment and receiver.
- Connect the equipment into an outlet on a circuit different from that to which the receiver is connected.
- Consult the dealer or an experienced radio/TV technician for help.

This device complies with part 15 of the FCC rules. Operation is subject to the following two conditions:

- (1) this device may not cause harmful interference, and
- (2) this device must accept any interference received, including interference that may cause undesired operation.

Changes or modifications to this unit not expressly approved by the party responsible for compliance could void the user's authority to operate the equipment.