

## Grandstream Networks, Inc.

126 Brookline Ave, 3rd Floor  
Boston, MA 02215. USA  
Tel : +1 (617) 566 - 9300  
Fax: +1 (617) 249 - 1987  
**[www.grandstream.com](http://www.grandstream.com)**



## **GDS3702**

### **Intercom Access System**

### **Quick Installation Guide**

For Warranty and RMA information, please visit  
[www.grandstream.com](http://www.grandstream.com)

**Content**

---

English.....1

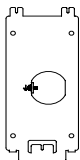
## PRECAUTIONS

- Do not attempt to disassemble or modify the device.
- Strictly follow the requirement of power source.
- Do not expose this device to temperatures out the range of -40 °C to 70 °C for both operating and storage.
- If the temperature is under -40 degree, the device will take about 3 minutes to heat up itself before booting and operating.
- Do not expose this device to environments outside of the following humidity range: 10-90% RH (non-condensing).
- Please strictly follow the instruction to install or hire professionals to install properly.

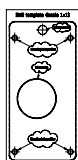
## PACKAGE CONTENTS



1 x GDS3702



1 x Installation Bracket



1 x Drilling Template



3 x Rubber Gaskets



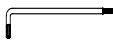
6 x Back Panel Screws



6 x Bracket Screws and Anchors



4 x Anti-tamper Screws



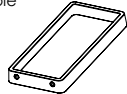
1 x Anti-tamper Hex Key



1 x Wiegand Cable



1x Quick Installation Guide



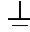
1 x Frame Back Cover

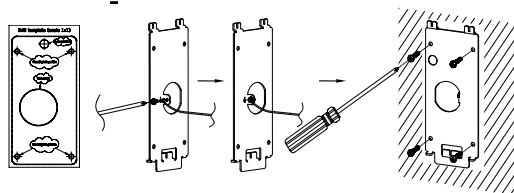
~1~

## MOUNTING GDS3702

### On-Wall (Surface) Mounting

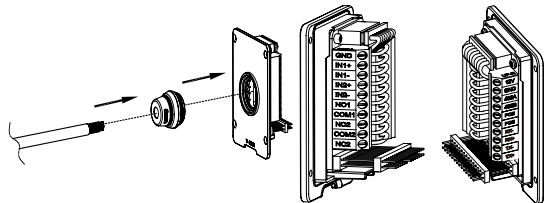
#### Step 1:

Refer to the "drilling template" to drill holes at targeted place on wall then mount the installation bracket using the four screws and anchors provided (screwdriver not provided). Connect and tighten "Ground" wire (if available) to the bracket ground marked with printed icon 



#### Step 2:

Pull Cat5e or Cat6 cable (not provided) through the rubber gasket selecting the correct size and the back cover panel piece, please refer to GDS3702 WIRING TABLE at the end of QIG for Pin connections.



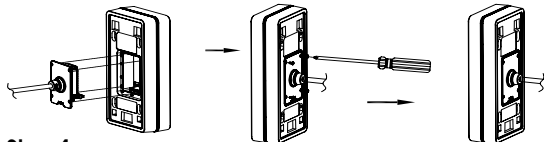
#### Note:

Needle nose plier highly recommended and 2.5mm flat screwdriver required (not provided). Stripping outer plastic shield of the cable in less than 2 inches suggested. Do NOT leave bare metal outside the socket by over stripping the inner plastic shield of the wires.

~2~

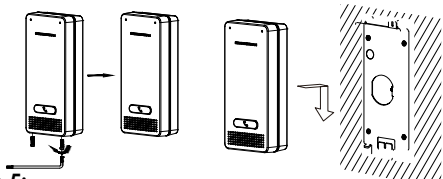
### Step 3:

Make sure the "Back Cover Frame" is in place, the wired back cover panel is good. Flush the back cover panel piece with the whole back surface of device, tighten it using the screws provided.



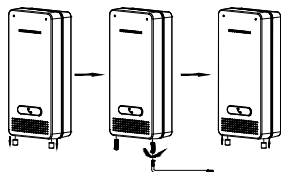
### Step 4:

Take out the two preinstalled anti-tamper screws using the hex key provided. Carefully align the GDS3702 to the metal bracket on wall, press and pull the GDS3702 down to the right position.



### Step 5:

Install the two anti-tamper screws back using the hex key provided (do NOT over tighten the screws). Cover the two screw holes on the bottom of "Back Cover Frame" piece using the two silicon plugs provided. Final check and finish the installation.



### In-Wall (Embedded) Mounting

Please refer to the "In-Wall (Embedded) Mounting Kit", which can be purchased separately from Grandstream.

## CONNECTING THE GDS3702

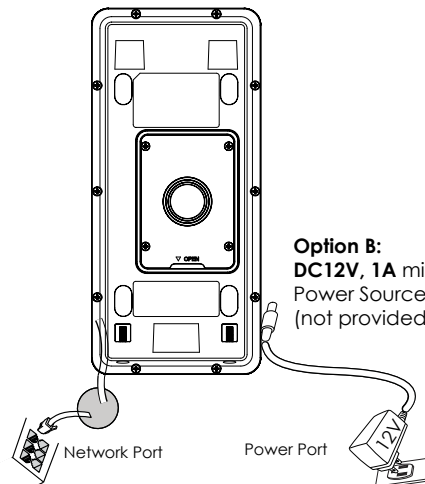
Refer to the illustration below and follow the instructions on the next page.



**POWER OFF** GDS3702 when connecting wires or inserting/removing the back cover panel piece!

### Option A:

RJ45 Ethernet Cable to **(Class 3)** Power over Ethernet (PoE) Switch.



### Option B:

**DC12V, 1A minimum**  
Power Source  
(not provided)

### Note:

Choose Option A if using PoE switch (Class 3);

OR: Option B if using 3rd party power source.

### Option A

Plug an RJ45 Ethernet cable into the **(Class 3)** Power over Ethernet(PoE) switch.

### Option B

#### Step 1:

Select an external **DC12V, minimum 1A** power source (not provided). Wire correctly the "+,-" cable of the power into the **"12V, GND"** connector of the GDS3702 socket (refer to the previous mounting page for instruction). Connect the power source.

#### Step 2:

Plug an RJ45 Ethernet cable into a network switch/hub or router.

#### Note:

Please refer to "Step 2" of "MOUNTING GDS3702" and "GDS3702 WIRING TABLE" at the end of QIG for all the wiring and connection illustration and instructions.

## GDS3702 CONFIGURATION

The GDS3702 is by default configured to obtain the IP address from DHCP server where the unit is located.

In order to know which IP address is assigned to your GDS3702, please use GS\_Search tool as illustrated in following steps.

#### Note:

If no DHCP server is available, the GDS3702 default IP address (after 5 minutes DHCP timeout) is **192.168.1.168**.

**Step 1:** Download and install GS\_Search tool:

<http://www.grandstream.com/support/tools>

**Step 2:** Run the Grandstream GS\_Search tool on a computer connected to same network/DHCP server.

**Step 3:** Click on  button to start device detection.

**Step 4:** The detected devices will appear in the output field as below.



**Step 5:** Open the web browser and type the displayed IP address of GDS3702 with leading **https://** to access the web GUI. (For security reasons, the default web access of GDS3702 is using **HTTPS** and port **443**.)

**Step 6:** Enter username and password to login.  
(The default administrator username is "admin" and the default random password can be found at the sticker on the GDS3702).

**Note:** For security reasons, make sure to change the default admin password from **System Settings > User Management**.



**Step 7:** After login into the webGUI, click the left side menu in the web interface for more detailed and advanced configuration.

The GNU GPL license terms are incorporated into the device firmware and can be accessed via the Web user interface of the device at my\_device\_ip/gpl\_license. It can also be accessed here:  
<http://www.grandstream.com/legal/open-source-software>

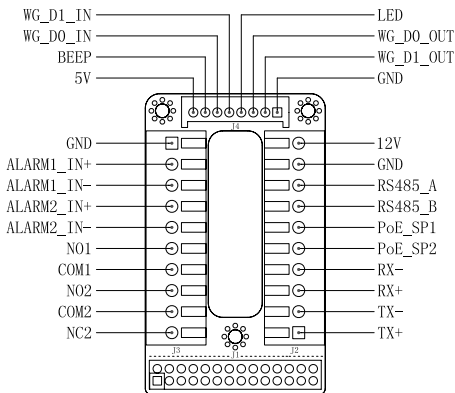
To obtain a CD with GPL source code information please submit a written request to: [info@grandstream.com](mailto:info@grandstream.com)

## GDS3702 WIRING TABLE

Jack	Pin	Signal	Function
J2 (Basic) 3.81mm	1	TX+ (Orange/White)	Ethernet, PoE 802.3af Class3, 12.95W
	2	TX- (Orange)	
	3	RX+ (Green/White)	
	4	RX- (Green)	
	5	PoE_SP2 (Blue + Blue/White)	
	6	PoE_SP1 (Brown + Brown/White)	RS485
	7	RS485_B	
	8	RS485_A	
	9	GND	Power Supply
	10	12V	
J3 (Advanced) 3.81mm	1	GND	Alarm GND
	2	ALARM1_IN+	Alarm IN
	3	ALARM1_IN-	
	4	ALARM2_IN+	
	5	ALARM2_IN-	
	6	NO1	Alarm Out
	7	COM1	
	8	NO2	
	9	COM2	Electric Lock
	10	NC2	
J4 (Special) 2.0mm  (It applies Only for GDS3705, GDS3710)	1	GND (Black)	Wiegand Power GND
	2	WG_D1_OUT (Orange)	Wiegand Output Signal
	3	WG_D0_OUT (Brown)	
	4	LED (Blue)	Wiegand Output LED Signal
	5	WG_D1_IN (White)	Wiegand Input Signal
	6	WG_D0_IN (Green)	
	7	BEEP (Yellow)	Wiegand Output BEEP Signal
	8	SV (Red)	Wiegand Power Output

For more details regarding GDS3702 wiring, please refer to User Manual.

Electric Lock			GDS3702 Connection			Door
Type	Power On	Power Off	NC2	NO2	COM2	Normal Status
Fail Safe	Lock	Open	■		■	Lock
				■	■	Open
Fail Secure	Open	Lock		■	■	Lock
			■		■	Open
<b><u>NOTE:</u></b>						
* Please select the correct wiring based on different electric strike/lock and the normal status of door.						
* Electric Magnetic Lock will work at <b>Fail Safe</b> mode ONLY.						



**Note:**

- 1) Power PoE\_SP1, PoE\_SP2 with DC, the voltage range is 48V~57V, no polarity.
- 2) Power with PoE the cable wiring:
  - PoE\_SP1, brown and brown/white binding
  - PoE\_SP2, blue and blue/white binding
- 3) DC Power could be correctly sourced from qualified PoE Injector.

This product is covered by one or more of the U.S. patents (and any foreign patent counterparts thereto) identified at [www.cmspatents.com](http://www.cmspatents.com).