



6.26^{LITE}

User Manual
Manual de Usuario
Manual de Usuário

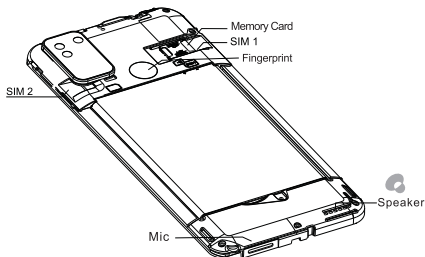


www.smoothmobile.us

1.Know Your Phone

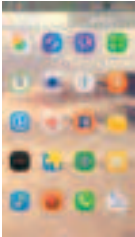


2.Insert SIM card&memory card



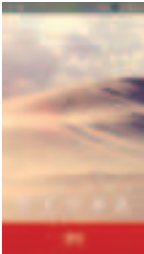
3.Main Screen

Main screen can be placed on the most commonly used applications, you can also display daily information such as the time, the weather(need third-party applications), date, etc



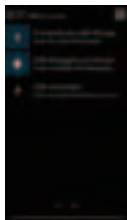
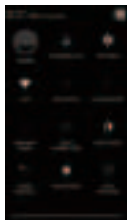
4.Make Calls

Enter dial interface and enter a complete phone number to make a call



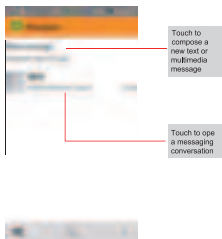
5.Notification

Notification icons inform you of new messages and events
When you receive a notification, Its icon appears in the status bar, along with a summary that appears only briefly



6.Messages

You can use Messaging to exchange text and multimedia messages with your friends

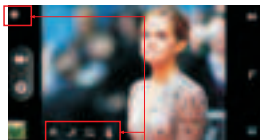


7.Camera

Camera pictures and videos can be stored in your phone.



Touch to take picture/video



Touch to change settings

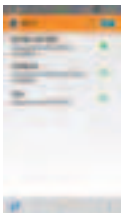
8.Gallery

You use Gallery to view pictures that you've taken with camera, downloaded . You can perform basic editing tasks on pictures and set them as your wallpaper or contact picture.



9.WLAN

To browse the web, you need switch on Data connection
If there is WLAN around, you can switch on WLAN to use it
browse the web Some may need password



10.Music

You can download music via the Internet. Your Music player will automatically recognize the file.

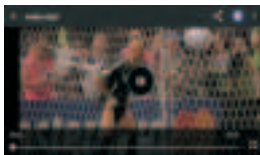
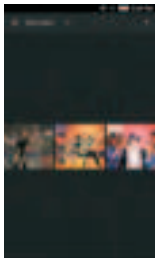


11.Video

You can watch video files saved on the phone through the video player.

In the all Apps screen ,touch the Gallery icon to open the list of files.

Select the video file you want to play, and touch icon to play.



12.Fingerprint Identification

Setting fingerprint identification makes it more convenient to open certain function



13. Absorption Rate (SAR) information:

This mobile phone meets the government's requirements for exposure to radio waves.

The guidelines are based on standards that were developed by independent scientific organizations through periodic and thorough evaluation of scientific studies.

The standards include a substantial safety margin designed to assure the safety of all persons regardless of age or health.

Device type: Smooth 6.26 Lite (FCC ID: GAO-SM6221)

has also been tested against this SAR limit. Power output listed is ERP for frequencies below 1GHz and EIRP for frequencies above 1GHz. SAR compliance for body-worn operating configurations is limited to the specific configurations tested for this filing. Body-worn operations are restricted to belt-clips, holsters or similar accessories that have no metallic component in the assembly and must provide at least 1.0 cm separation between the device and the body of the user.

End-users must be informed of the body-worn operating requirements for satisfying RF exposure compliance. The highest reported SAR for head, body-worn accessory, product specific (wireless router), and simultaneous transmission use conditions is 0.624W/kg, 0.784W/kg, 0.784W/kg and 1.083W/kg respectively.

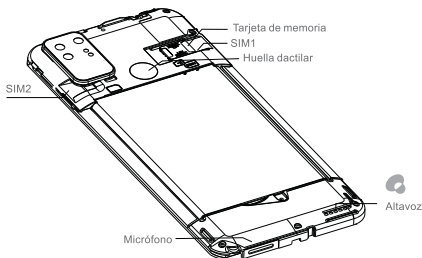
14. Warranty

For more information about the warranty of your phone, after sales service and repair centers and/or a complete version of the User Guide please visit www.smoothmobile.us

1. Conoce tu teléfono

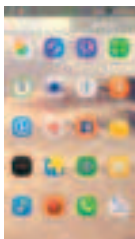


2. Inserte la tarjeta SIM y la tarjeta de memoria



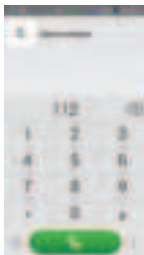
3.Pantalla principal

Las aplicaciones más utilizadas se pueden colocar en la pantalla principal, también puede mostrar información diaria como la hora, el clima (se necesitan aplicaciones de terceros), la fecha, etc.en la pantalla principal



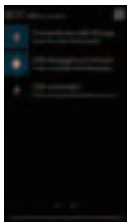
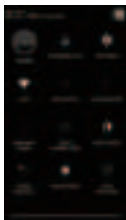
4.Hacer llamadas

Ingresa a la interfaz de marcación e ingrese un número de teléfono completo para realizar una llamada



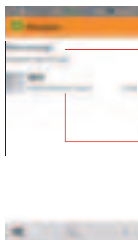
5. Notificación

Los íconos de notificación le informan de nuevos mensajes y eventos cuando recibe una notificación, Su ícono aparece en la barra de estado, junto con un resumen que aparece solo brevemente



6. Mensajes

Puede utilizar Mensajería para intercambiar mensajes de texto y multimedia con sus amigos.



Touch to compose a new text or multimedia message

Touch to open a messaging conversation

7.Cámara

Las imágenes y los videos de la cámara se pueden almacenar en su teléfono



Touch to take picture/video



Touch to change settings

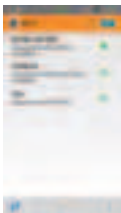
8.Galería

Utiliza la Galería para ver las imágenes que ha tomado con la cámara, descargadas. Puede realizar tareas básicas de edición en imágenes y configurarlas como fondo de pantalla o imagen de contacto.



9.WLAN

Para navegar por la web, debe activar Conexión de datos. Si hay WLAN cerca, puede activar WLAN para usarla para navegar por la web. Algunos pueden necesitar contraseña



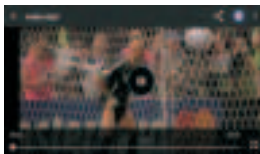
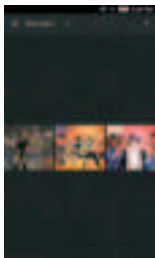
10.Música

Puede descargar música a través de Internet. Su reproductor de música reconocerá automáticamente el archivo.



11.Video

Puede ver archivos de video guardados en el teléfono a través del reproductor de video. En la pantalla de todas las aplicaciones, toque el icono Galería para abrir la lista de archivos. Seleccione el archivo de video que desea reproducir y toque el ícono para reproducir.



12. Identificación de huellas dactilares

La configuración de la identificación de huellas dactilares hace que sea más conveniente abrir ciertas funciones



13. Información sobre la tasa de absorción (SAR):

Este teléfono móvil cumple con los requisitos gubernamentales de exposición a ondas de radio. Las pautas se basan en estándares que fueron desarrollados por organizaciones científicas independientes a través de evaluaciones periódicas y exhaustivas de estudios científicos. Los estándares incluyen un margen de seguridad sustancial diseñado para garantizar la seguridad de todas las personas independientemente de su edad o salud.

Tipo de dispositivo: Smooth 6.26 Lite (FCC ID: GAO-SM6221) también se ha probado con este límite de SAR. La potencia de salida indicada es ERP para frecuencias inferiores a 1 GHz y EIRP para frecuencias superiores a 1 GHz. El cumplimiento de SAR para configuraciones operativas para llevar sobre el cuerpo se limita a las configuraciones específicas probadas para esta presentación. Las operaciones en el cuerpo están restringidas a clips para cinturón, fundas o accesorios similares que no tienen componentes metálicos en el ensamblaje y deben proporcionar una separación de al menos 1,0 cm entre el dispositivo y el cuerpo del usuario. Los usuarios finales deben estar informados de los requisitos operativos de uso corporal para cumplir con el cumplimiento de la exposición a RF. El SAR más alto informado para la cabeza, los accesorios para llevar en el cuerpo, el producto específico (enrutador inalámbrico) y las condiciones de uso de transmisión simultánea es de 0,624 W / kg, 0,784 W / kg, 0,784 W/kg y 1,083 W / kg respectivamente.

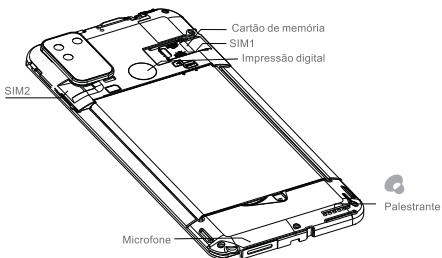
14. Garantía:

Para obtener más información sobre la garantía de su teléfono, el servicio postventa y los centros de reparación y / o una versión completa de la Guía del usuario, visite www.smoothmobile.us

1. Conheça o seu telefone

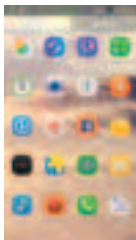


2. Insira o cartão SIM e o cartão de memória



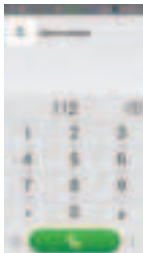
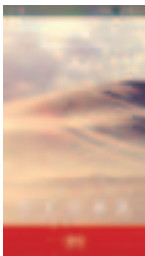
3.Tela principal

Os aplicativos mais comumente usados podem ser colocados na tela principal, você também pode exibir informações diárias como a hora, o clima (precisa de aplicativos de terceiros), data, etc na tela principal



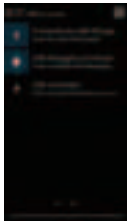
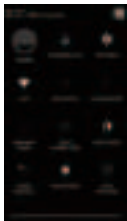
4.Fazer ligações

Entre na interface de discagem e digite um número de telefone completo para fazer uma chamada



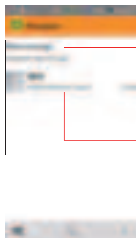
5. Notificação

Os ícones de notificação informam sobre novas mensagens e eventos quando você recebe uma notificação, seu ícone aparece na barra de status, junto com um resumo que aparece apenas brevemente



6. Mensagens

Você pode usar o Messaging para trocar mensagens de texto e multimídia com seus amigos.



Touch to compose a new text or multimedia message

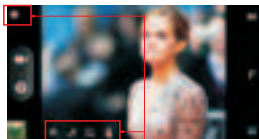
Touch to open a messaging conversation

7. Câmera

As fotos e os vídeos da câmera podem ser armazenados no seu telefone



Touch to tack
picture/video



Touch to
change
settings

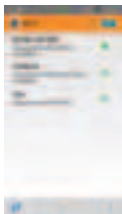
8, Galeria

Você usa a Galeria para ver as fotos tiradas coma câmera, baixadas. Você pode executar tarefas básicas de edição em imagens e defini-las como papel de parede ou imagem de contato.



9.WLAN

Para navegar na web, você precisa ativar a conexão de dados. Se houver WLAN por perto, você pode ligar a WLAN para navegar na web. Alguns podem precisar de senha



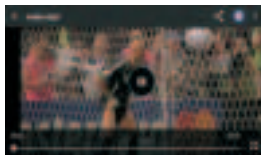
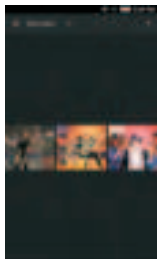
10.Música

Você pode baixar músicas pela internet. Seu reprodutor de música reconhecerá automaticamente o arquivo.



11. Vídeo

Você pode assistir a arquivos de vídeo salvos no telefone por meio do reprodutor de vídeo. Na tela de todos os aplicativos, toque no ícone Galeria para abrir a lista de arquivos. Selecione o arquivo de vídeo que deseja reproduzir e toque no ícone para reproduzi-lo.



12. Identificação da impressão digital

Definir a identificação da impressão digital torna mais conveniente abrir certas funções



13. Informações da taxa de absorção (SAR):

Este telefone celular atende aos requisitos do governo para exposição a ondas de rádio. As diretrizes baseiam-se em padrões desenvolvidos por organizações científicas independentes por meio de avaliações periódicas e completas de estudos científicos.

Os padrões incluem uma margem de segurança substancial projetada para garantir a segurança de todas as pessoas, independentemente da idade ou estado de saúde.

Tipo de dispositivo: Smooth 6.26 Lite (FCC ID: GAO-SM6221) também foi testado em relação a estelímite de SAR.

A saída de energia listada é ERP para frequências abaixo de 1 GHz e EIRP para frequências acima de 1 GHz. A conformidade com SAR para configurações de operação junto ao corpo é limitada às configurações específicas testadas para este arquivamento. As operações junto ao corpo são restritas a cliques de cinto, estojos ou acessórios semelhantes que não possuem nenhum componente metálico na montagem e devem fornecer uma separação de pelo menos 1,0 cm entre o dispositivo e o corpo do usuário. Os usuários finais devem ser informados sobre os requisitos de operação junto ao corpo para atender à conformidade de exposição à RF. O SAR mais alto relatado para condições de uso de transmissão simultânea na cabeça, acessório para uso no corpo, produto específico (roteador sem fio) e transmissão simultânea é de 0,624 W / kg, 0,784 W / kg, 0,784 W / kg e 1,083 W / kg, respectivamente.

14. Garantia:

Para obter mais informações sobre a garantia do seu telefone, serviço pós-venda e centros de reparo e / ou uma versão completa do Guia do Usuário, visite www.smoothmobile.us

FCC Statement

This equipment has been tested and found to comply with the limits for a Class B digital device, pursuant to part 15 of the FCC Rules. These limits are designed to provide reasonable protection against harmful interference in a residential installation. This equipment generates, uses and can radiate radio frequency energy and, if not installed and used in accordance with the instructions, may cause harmful interference to radio communications. However, there is no guarantee that interference will not occur in a particular installation. If this equipment does cause harmful interference to radio or television reception, which can be determined by turning the equipment off and on, the user is encouraged to try to correct the interference by one or more of the following measures:

- Reorient or relocate the receiving antenna.
- Increase the separation between the equipment and receiver.
- Connect the equipment into an outlet on a circuit different from that to which the receiver is connected.
- Consult the dealer or an experienced radio/TV technician for help.

Caution: Any changes or modifications to this device not explicitly approved by manufacturer could void your authority to operate this equipment.

This device complies with part 15 of the FCC Rules. Operation is subject to the following two conditions: (1) This device may not cause harmful interference, and (2) this device must accept any interference received, including interference that may cause undesired operation.

RF Exposure Information

The device has been evaluated to meet general RF exposure requirement. The device can be used in portable exposure condition without restriction.

Specific Absorption Rate (SAR) information:

This Smartphone meets the government's requirements for exposure to radio waves. The guidelines are based on standards that were developed by independent scientific organizations through periodic and thorough evaluation of scientific studies. The standards include a substantial safety margin designed to assure the safety of all persons regardless of age or health. FCC RF Exposure Information and Statement the SAR limit of USA (FCC) is 1.6 W/kg averaged over one gram of tissue. Device types: Smartphone has also been tested against this SAR limit. This device was tested for typical body-worn operations with the back of the phone kept 10mm from the body. To maintain compliance with FCC RF exposure requirements, use accessories that maintain an 10mm separation distance between the user's body and the back of the phone. The use of belt clips, holsters and similar accessories should not contain metallic components in its assembly. The use of accessories that do not satisfy these requirements may not comply with FCC RF exposure requirements, and should be avoided.

