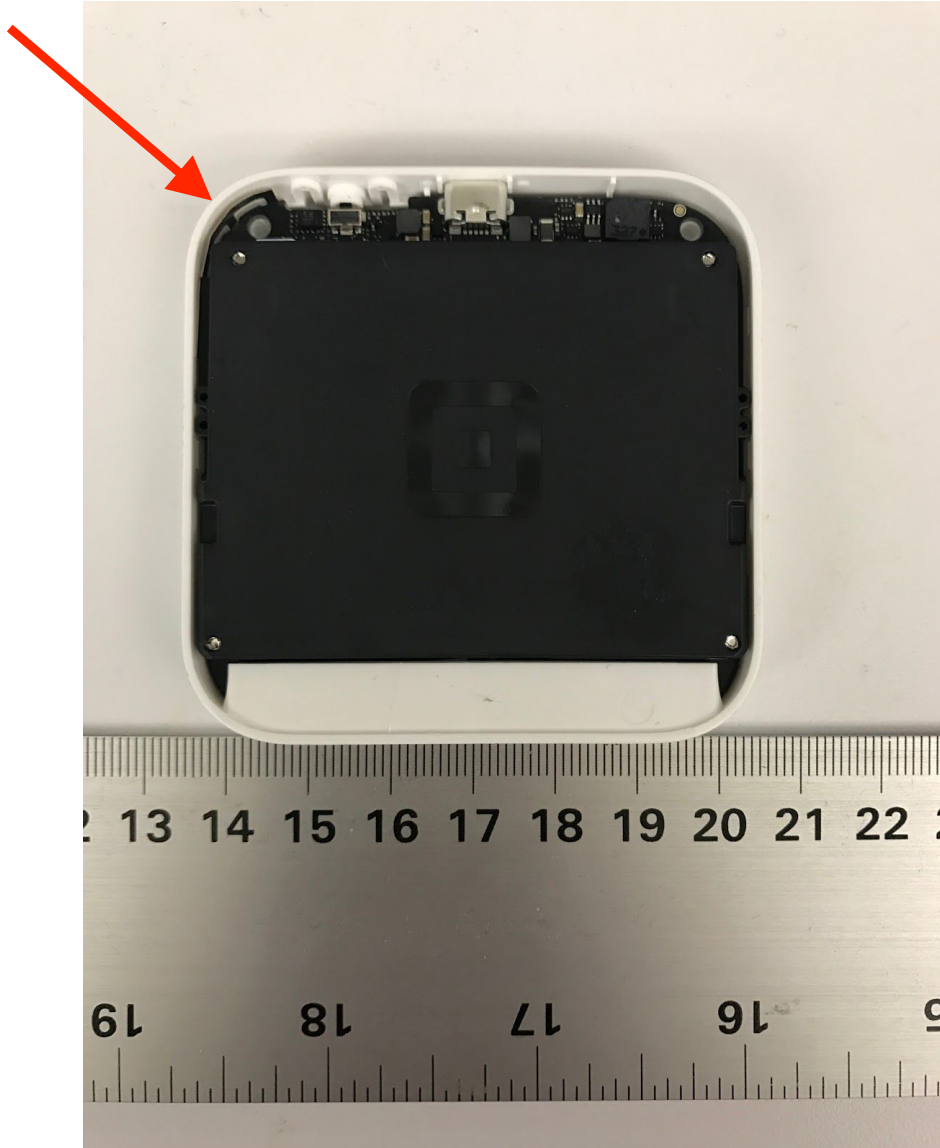
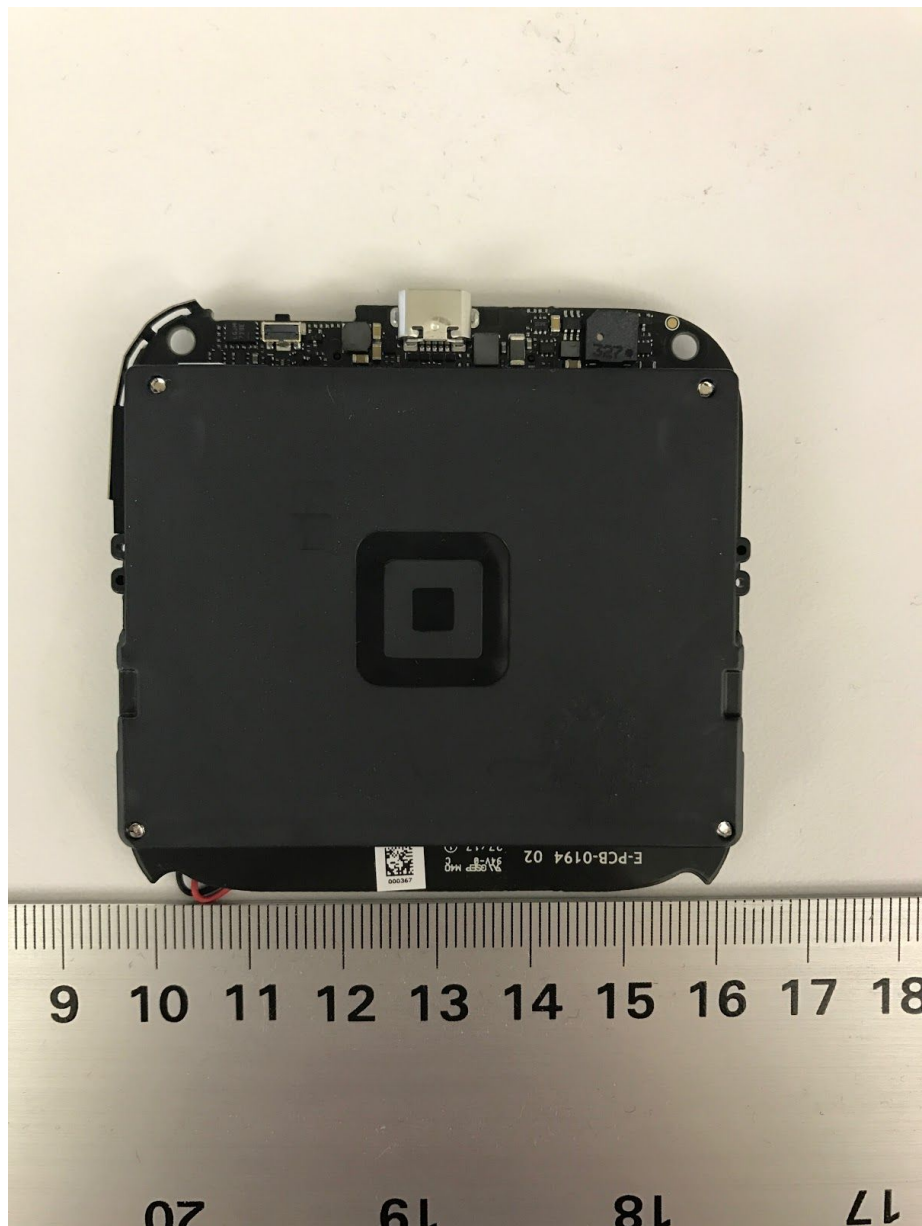


EUT - Internal view 1  
Enclosure Cover removed

BLE Antenna



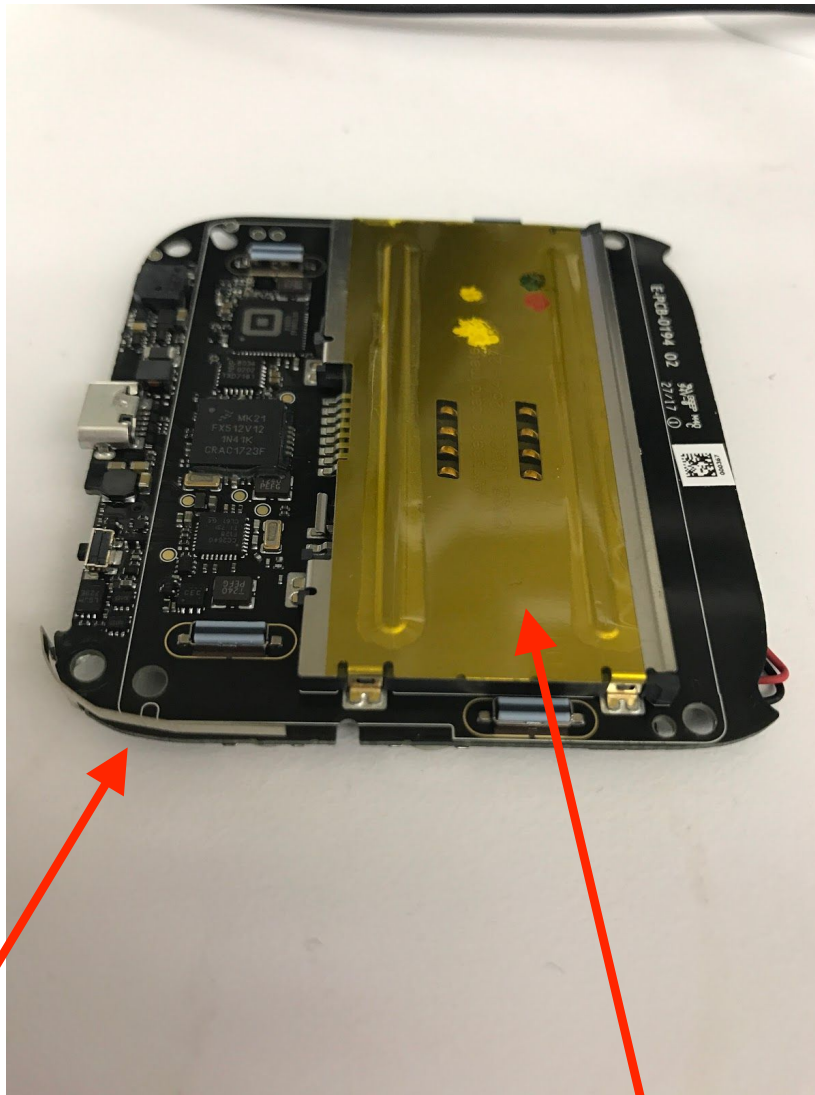
EUT - Internal view 2  
PCB, side 1, with cage



EUT- Internal view 3  
PCB, side 1, cage removed



EUT - Internal view 4  
PCB, side 1, cage removed, alternate angle



BLE Antenna

Contact card socket soldered directly onto PCB.  
Not a shield. There are no components under this part.

The image displays the internal components of a mobile phone, specifically the battery and the main circuit board. The battery is a rectangular unit with a white top layer and yellow side layers. It features the following markings:

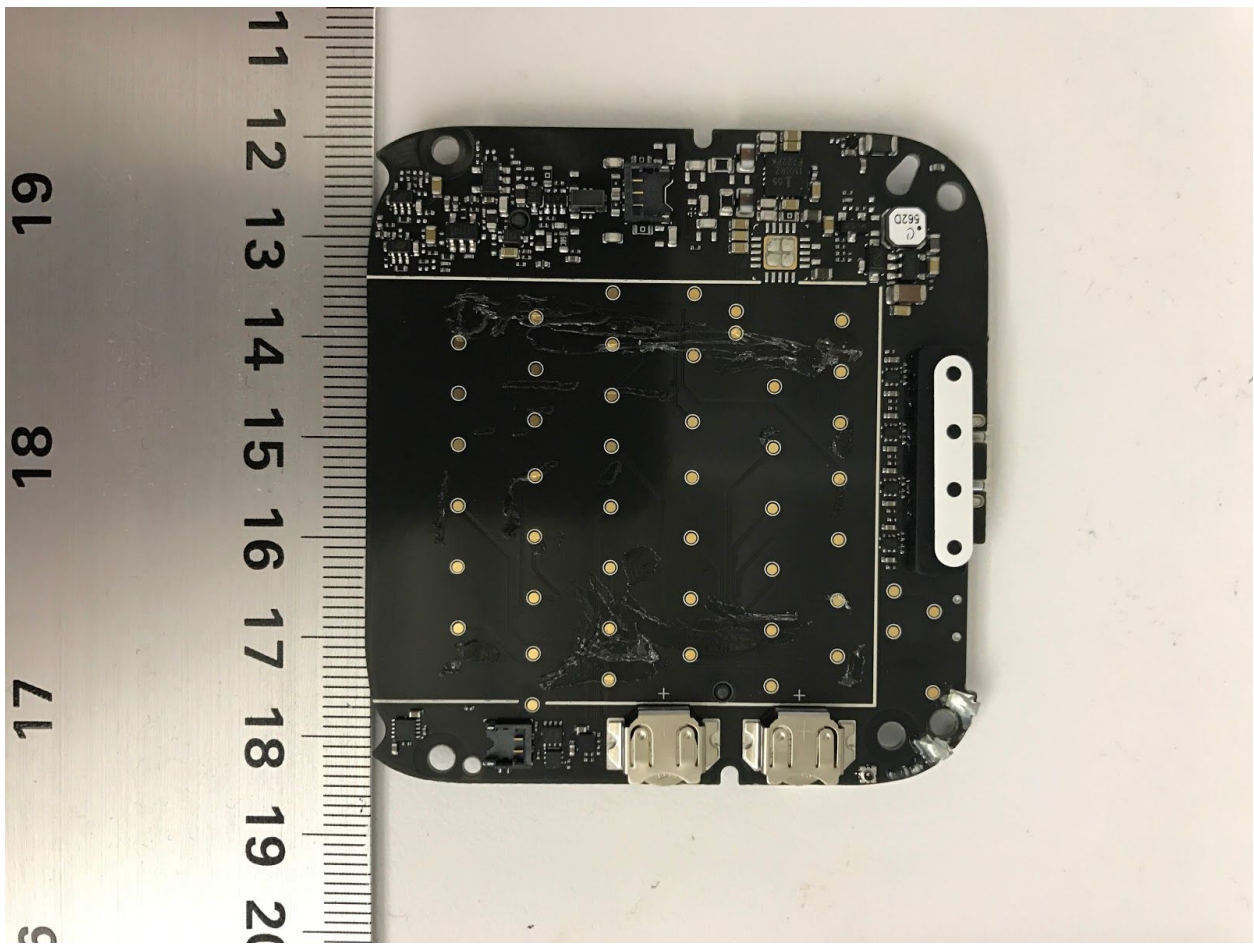
- A '+' symbol indicating the positive terminal.
- The model number 'E1709' and voltage '3.7V'.
- The part number 'L1709M09S6'.
- The capacity '1.520W'.
- A QR code located below the part number.

The circuit board is black and populated with numerous electronic components, including capacitors, resistors, and integrated circuits. A small circular component labeled 'U 562D' is visible near the bottom right. A red and black wire are connected to the left side of the battery. A white plastic bracket is attached to the bottom edge of the circuit board. A ruler at the bottom provides a scale from 10 to 18 centimeters.

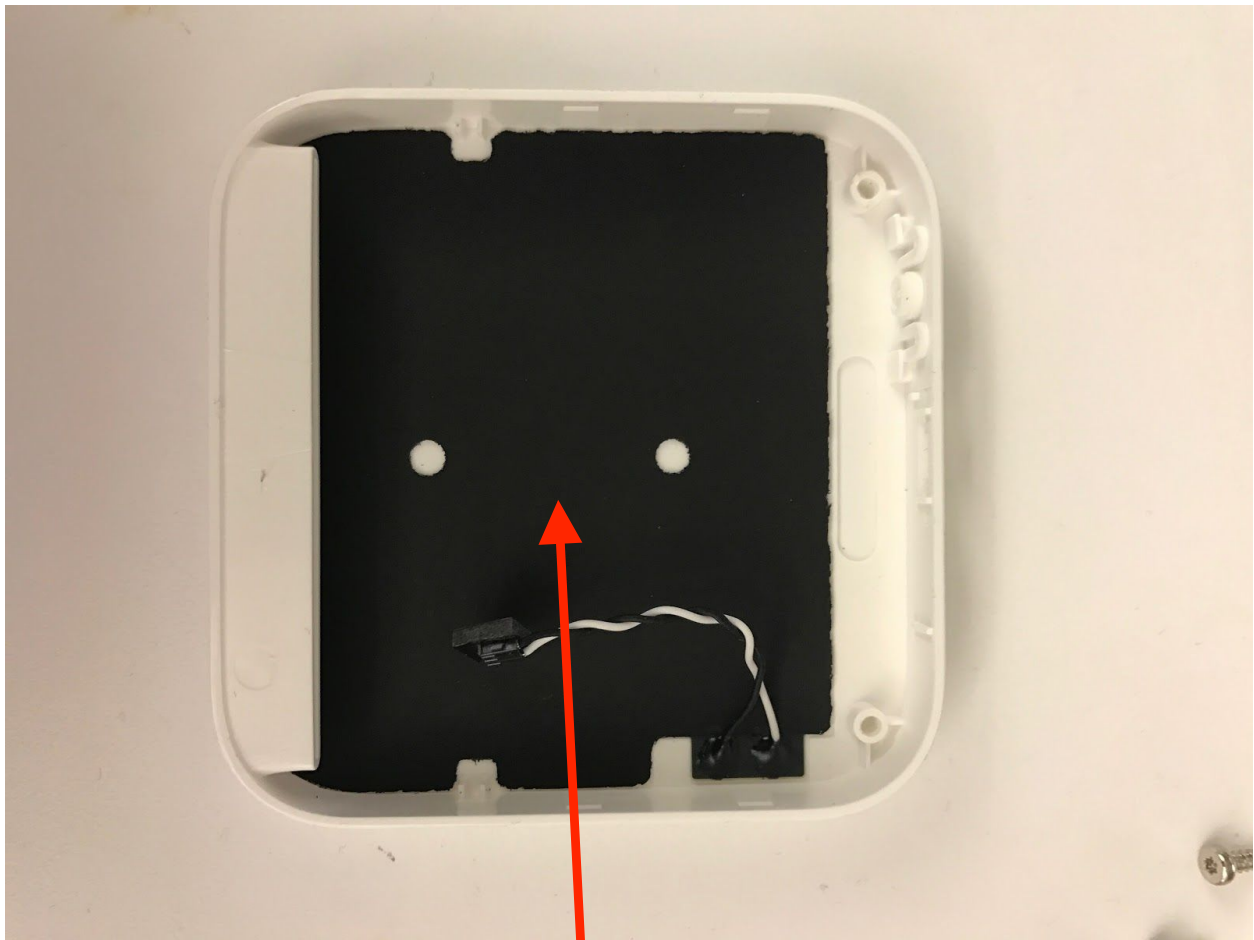




EUT - Internal view 6  
PCB, side 2, battery removed



EUT - Internal view 7  
NFC Coil, mounted to housing



13.56 Mhz  
Coil