



NERO STREAM **XD**

WIRELESS HI-FI DAC
POWER AMPLIFIER

USER GUIDE



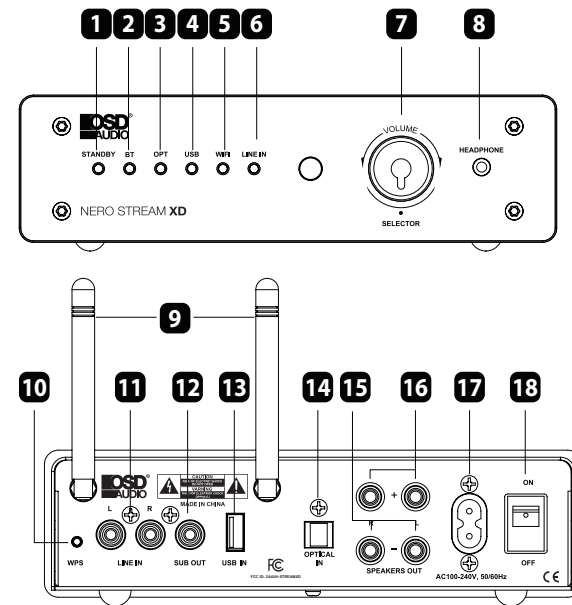


SAFETY INSTRUCTIONS

- To reduce the risk of fire or electrical shock, do not expose the product to rain or moisture.
- The product should not be exposed to any dripping or splashing liquid.
- Objects filled with liquids, such as vases, should not be placed on the product.
- Keep the remote control battery away from children. Dispose of used battery promptly, replace only with a battery of the correct type.
- Protect the power cord from damage. Do not pull push the power cord excessively, and take care not to let the power cord become pinched, particularly at or near the plug.
- Keep the product away from heat sources such as heat registers, stoves or other appliances that produce heat.
- Avoid direct sunshine and covering vents. Do not operate in a sealed box and be sure to have enough room for heat exchange.
- Avoid opening the cover. Do not open the cover, or touch the inner parts, refer servicing to our customer service.

AMPLIFIER FEATURES

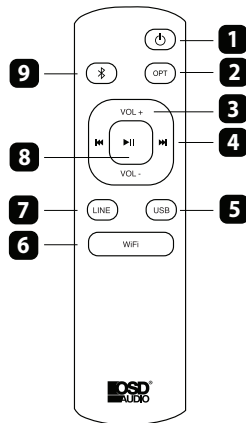
1. Power Indicator
2. Bluetooth® Indicator
3. OPT Indicator
4. USB Indicator
5. Wi-Fi® Indicator
6. Line In Indicator
7. Volume Knob/Input Selector
8. Head Phone Jack
9. Antenna
10. WPS
11. Line In
12. SUB Out
13. USB In
14. Optical Input
15. Speaker Output -L/R
16. Speaker Output + L/R
17. Power Input
18. On/Off Switch



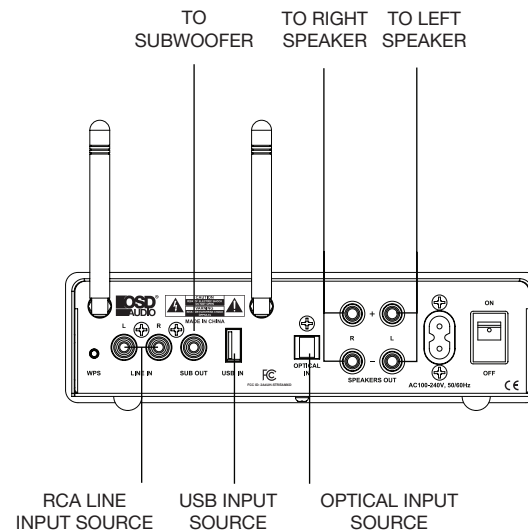


REMOTE FEATURES

1. On/Off Button
2. Optical Source
3. Volume +/-
4. Previous/Next
5. USB Source
6. Wi-Fi® Source
7. Line Source
8. Play/Pause
9. Bluetooth Source



CONNECTION DIAGRAM



SETUP

1. Connect the power cord to the back of the amplifier then connect it to a wall outlet.
2. Connect your devices to a suitable input (see page 5).
3. Turn the power button to the On position, after two seconds the unit will enter working status and the input indicator will light up.
4. Press the Bluetooth®, OPT, LINE or AUX button on the remote or the volume knob to choose a audio source. Control the playback via the remote control by pressing the buttons.

Note: Always press the desired source button on the remote control for the audio source to work.

Connect Your Device:

Connect your subwoofer to SUB out.
Connect your CD player via its RCA cable to the RCA L/R input. Make sure you connect the “L” plug to the left input channel and the “R” plug to the right input channel.
Connect your phone/tablet/MP3 via an AUX cable to Line In.
Connect your DVD player via its optical fiber cable to the Optical Input.
Connect your speakers to the Speaker Output. Make sure you connect the -/+ and the L/R cables to the right input.

Bluetooth® Pairing:

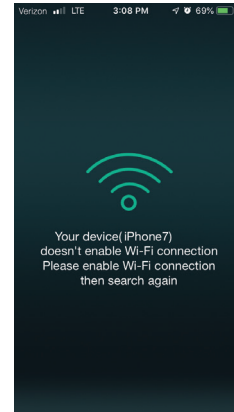
1. Press the Bluetooth® on the remote to activate the Bluetooth source.
2. Activate Bluetooth on your phone/tablet and start searching for new Bluetooth devices.
3. When your phone/tablet finds NERO STREAM XD, choose this unit and begin pairing.
4. To unpair an existing source, press and hold the Bluetooth button on the remote for 3 seconds.

Wi-Fi® Connection:

1. Download and install the OSD Audio App for your iOS or Android device.
2. Press the Wi-Fi® button on the remote to activate the Wi-Fi source.
3. WPS: - Link your device to the NERO STREAM and your Wi-Fi network by following the setup steps in the app.

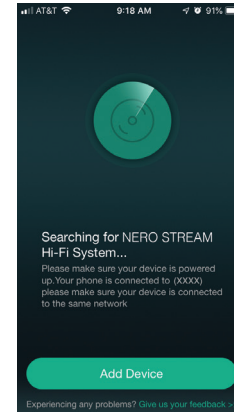


APP CONTROL / USER INTERFACE



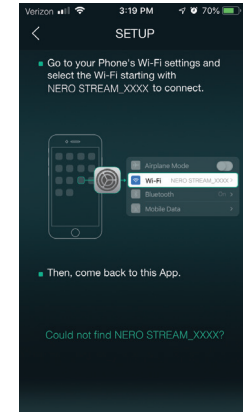
Enable Wi-Fi®

Be sure your phone or tablets Wi-Fi is turned on.



Wi-Fi Network

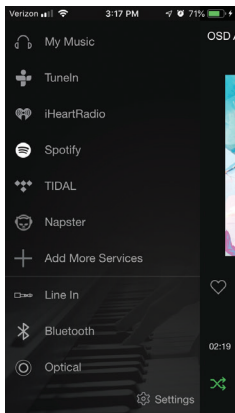
Be sure the NERO is powered up and your phone or tablet is set to the same Wi-Fi network as the NERO.



Set Up

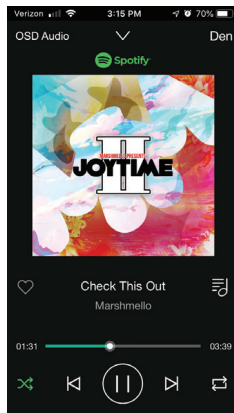
In your devices Wi-Fi settings look for NERO STREAM_XXXX and select to connect.

APP CONTROL / USER INTERFACE



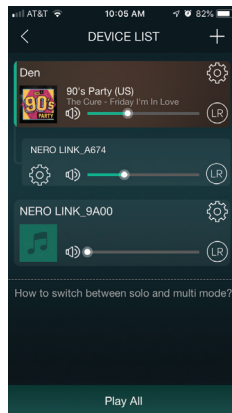
Stream & Select

Swipe right to view and select a streaming service or source input device.



Home Screen

Current song title, artist & album art are shown along with controls.



Device List

Choose which devices/zones are connected and being used and select separate volume and source input for each device/zone.

SYSTEM FEATURES

Multi-Device

Stream or play music from different source devices

Multi-User

Multiple users can control the audio source as well as the room or zone it's playing in.

Multi-Room

Connect multiple NERO STREAMS to create a whole house audio system.





TROUBLE SHOOTING

PROBLEM	POSSIBLE CAUSE
No Power	<ul style="list-style-type: none">- The power cord is disconnected.- Poor connection at the wall socket or the wall socket is inactive.
No Sound	<ul style="list-style-type: none">- The speakers are disconnected.- Volume control at lowest level.- Check if the signal cables are damaged.- Check if the LEDs are blinking. If not, re start the amplifier and ensure that the LED displays is in standby. If it still doesn't work, contact customers service.
Sudden Sound Loss	<ul style="list-style-type: none">- Check the audio source.
Poor Sound Quality	<ul style="list-style-type: none">- Audio source problem- Bad or incorrect speakers connections.- Treble and bass control are too low.
LED Off	<ul style="list-style-type: none">- Check if the amplifier is connected with the power outlet and confirm that the voltage regulator works.

The Bluetooth® word mark and logos are registered trademarks owned by Bluetooth SIG, Inc. and any use of such marks by OSD Audio is under license. Other trademarks and trade names are those of their respective owners.

SPECIFICATIONS

Amplifier: Class D

Output Power: 50W @ 4 Ohm

Max Output Power: 200W

Frequency response: 20Hz ~ 20KHz

Impedance: 8 - 4 Ohm

Inputs: Wi-Fi®, Bluetooth®, Optical, USB, AUX (RCA)

Outputs: Speaker, Subwoofer, 3.5mm Headphone Jack

DAC: Cirrus Logic CS8416 24 Bit/192kHz DAC

Wi-Fi Frequency: 2.4 GHz

Bluetooth Version: 4.2 w/ aptX™

Dimensions: 7.5 x 5.5 x 2" inch

Weight: 2.8 lbs



WARRANTY

All OSD AUDIO electronics have (2) year Limited Warranty against defects in materials and workmanship. Proof of purchase must accompany all claims. During the warranty period OSD AUDIO will replace any defective part and correct any defect in workmanship without charge for either parts or labor.

OSD AUDIO may replace returned electronics with a product of equal value and performance. In such cases, some modifications to the mounting may be necessary and are not OSD AUDIO's responsibility.

Damage to or destruction of components due to application of excessive power voids the warranty on those parts. In these cases, repairs will be made on the basis of the retail value of the parts and labor. To return for repairs, you must email customer service at RMA@audiogeargroup.com for a Returned Merchandise Authorization (RMA) number then the unit must be shipped to OSD AUDIO at the owner's expense, along with a note explaining the nature of service required. Be sure to pack the product(s) in a corrugated container with at least 3 inches of resilient material to protect the unit from damage in transit.

This Warranty Does Not Cover: Damage caused by abuse, accident, misuse, negligence, or improper operation (installation). Any products that have been altered or modified. Any product whose identifying number of decal, serial #, etc. has been altered, defaced or removed. Normal wear and maintenance.

FCC WARNINGS

Any Changes or modifications not expressly approved by the party responsible for compliance could void the user's authority to operate the equipment.

Note: This equipment has been tested and found to comply with the limits for a Class B digital device, pursuant to part 15 of the FCC Rules. These limits are designed to provide reasonable protection against harmful interference in a residential installation. This equipment generates uses and can radiate radio frequency energy and, if not installed and used in accordance with the instructions, may cause harmful interference to radio communications. However, there is no guarantee that interference will not occur in a particular installation. If this equipment does cause harmful interference to radio or television reception, which can be determined by turning the equipment off and on, the user is encouraged to try to correct the interference by one or more of the following measures:

- Reorient or relocate the receiving antenna.
- Increase the separation between the equipment and receiver.
- Connect the equipment into an outlet on a circuit different from that to which the receiver is connected.
- Consult the dealer or an experienced radio/TV technician for help.

This device complies with part 15 of the FCC Rules. Operation is subject to the following two conditions:

(1) This device may not cause harmful interference, and (2) this device must accept any interference received, including interference that may cause undesired operation.

This equipment complies with FCC radiation exposure limits set forth for an uncontrolled environment.

This equipment should be installed and operated with minimum distance 20cm between the radiator & your body.