



# FCC PART 18 TEST REPORT

**Report No.:** SET2022-15153

**Product Name:** Microwave Oven

**Trade Name:** Midea

**Model No. :** XM131AYY, XM131AYYY, XM131AYY-P(E), XM131AYYY-P(E),  
EM131A5C-YY, EM131A5C-YYY, EM131A5C-YYYY

**FCC ID :** VG8XM131AYY

**Applicant:** Guangdong Midea Kitchen Appliances Manufacturing Co., Ltd.

**Received Date:** 2022.11.08

**Test Data:** 2022.11.08-2022.11.11

**Issued by:** CCIC Southern Testing Co., Ltd.

**Lab Location:** Electronic Testing Building, No.43 Shahe Road, Xili Street, Nanshan District, Shenzhen, Guangdong, China

**Tel:** 86 755 26627338    **Fax:** 86 755 26627238

This test report consists of **21** pages in total. It may be duplicated completely for legal use with the approval of the applicant. It should not be reproduced except in full, without the written approval of our laboratory. The client should not use it to claim product endorsement by CCIC-SET. The test results in the report only apply to the tested sample. The test report shall be invalid without all the signatures of testing engineers, reviewer and approver. Any objections must be raised to CCIC-SET within 15 days since the date when the report is received. It will not be taken into consideration beyond this limit.



## Test Report

**Product Name**..... Microwave Oven

**Model No.** ..... XM131AYY, XM131AYYY, XM131AYY-P(E), XM131AYYY-P(E),  
EM131A5C-YY, EM131A5C-YYY, EM131A5C-YYYY

**Trade name** ..... Midea

**Applicant**..... Guangdong Midea Kitchen Appliances Manufacturing Co., Ltd.

**Applicant Address**..... No.6, Yong An Road, Beijiao, Shunde, Foshan, China

**Manufacturer** ..... Guangdong Midea Kitchen Appliances Manufacturing Co., Ltd.

**Manufacturer Address** ..... No.6, Yong An Road, Beijiao, Shunde, Foshan, China

**Test Standards** ..... 47 CFR Part 18

**Test Result**..... PASS

**Tested by** ..... Ruihong Xie

Ruihong Xie Test Engineer

2022.11.11

**Reviewed by** ..... Chris You

Chris You Senior Engineer

2022.11.11

**Approved by** ..... Hou Tao

Hou Tao, Manager

2022.11.11

**TABLE OF CONTENTS**

<b>1.</b>	<b>GENERAL INFORMATION .....</b>	<b>5</b>
<b>1.1</b>	<b>GENERAL DESCRIPTION OF EUT .....</b>	<b>5</b>
<b>1.2</b>	<b>Test Standards and Results.....</b>	<b>7</b>
<b>1.3</b>	<b>Facilities and Accreditations.....</b>	<b>8</b>
1.3.1	Facilities .....	8
1.3.2	Test Environment Conditions.....	8
1.3.3	Measurement Uncertainty .....	8
<b>2.</b>	<b>EQUIPMENTS LIST .....</b>	<b>9</b>
<b>3.</b>	<b>EMC EMISSION TEST.....</b>	<b>10</b>
<b>3.1</b>	<b>Test Procedure.....</b>	<b>10</b>
3.1.1	Frequency For Normal Voltage .....	10
3.1.2	Frequency For Line Voltage.....	10
3.1.3	Measurement data .....	11
<b>3.2</b>	<b>RADIATION HAZARD TEST.....</b>	<b>11</b>
3.2.1	Test Setup .....	11
3.2.2	Limit.....	11
3.2.3	Test results.....	11
<b>3.3</b>	<b>RF OUTPUT POWER MEASUREMENT .....</b>	<b>12</b>
3.3.1	Test Standard.....	12
3.3.2	EUT Operating mode .....	12
3.3.3	Test Data.....	12
<b>4.</b>	<b>CONDUCTED EMISSION .....</b>	<b>13</b>
4.1.1	Conducted Emission Limit.....	13
4.1.2	Test Procedure.....	13
4.1.3	Test Setup .....	13
<b>5.</b>	<b>RADIATED EMISSION .....</b>	<b>16</b>
5.1.1	Radiated Emission Limits .....	16
5.1.2	Test Setup .....	16
5.1.3	Test Procedure.....	17
<b>APPENDIX I: PHOTOGRAPHS OF EMC TEST CONFIGURATION .....</b>		<b>21</b>



Change History		
Issue	Date	Reason for change
1.0	2022.11.11	First edition

## 1. GENERAL INFORMATION

### 1.1 GENERAL DESCRIPTION OF EUT

EUT Name .....	Microwave Oven
Trade Name.....	Midea
Model.....	XM131AYY, XM131AYYY, XM131AYY-P(E), XM131AYYY-P(E), EM131A5C-YY, EM131A5C-YYY, EM131A5C-YYYY model designations as follows: X= E or A; “E” stands for Film type keypad, “A” stands for Rotating type knob; M: indicates microwave function; 131: "1" indicates the microwave output power is 1100W, “31” indicates cavity capacity is 31 liters; A: indicates the design No.; YY/YYYY/YYYYY: “Y” may be 0-9, A-Z or blank, indicates different appearance; -YY/-YYY/-YYYY: “Y” may be 0-9, A-Z or blank, indicates different appearance; -P(E): Indicates cavity type; Model of EM131A5C-BS was selected for final testing.
Power Supply .....	120V AC/60Hz
Rated input Power(microwave):	1550W
Rated output Power(microwave):	1100W
Frequency .....	2450MHz (Class B/Group 2)
Magnetron Model.....	2M392J
Magnetron Manufacturer ...:	WITOL
Description of Support Units:	-Load for power output measurement: 1100 milliliters of water in the beaker located in the center of the oven. -Load for frequency measurement: 1100 milliliters of water in the beaker located in the center of the oven. -Load for measurement of radiation on second and third harmonic: Two loads, one of 770 and the other of 330 milliliters, of water are used. Each load is tested both with the beaker located in the center of the oven and with it in the right front corner. -Load for all other measurements: 770 milliliters of water, with the beaker located in the center of the oven.

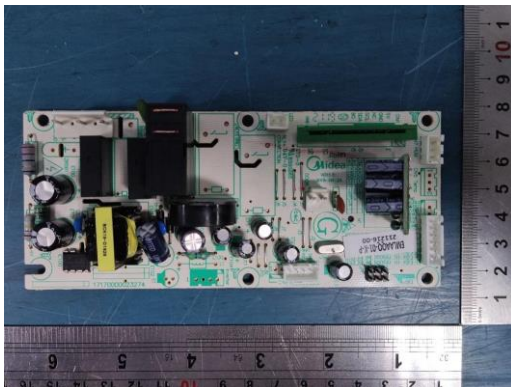
*Note 1:* The EUT have the following typical setups during the test:

Setup1: Microwave heating mode (According to FCC PART 18);

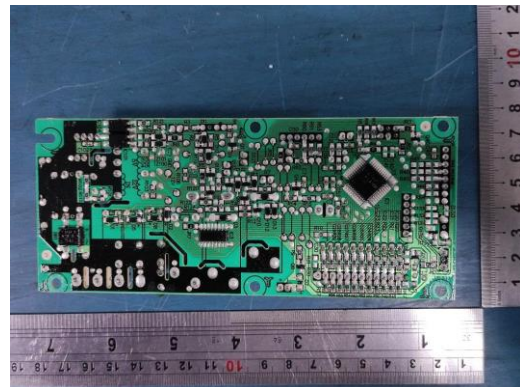
*Note 2:* For a more detailed description, please refer to Specification or User's Manual supplied by the applicant and/or manufacturer.

*Note 3:* This report is based on the original report #: "SET2022-08618" updated mother board as below:

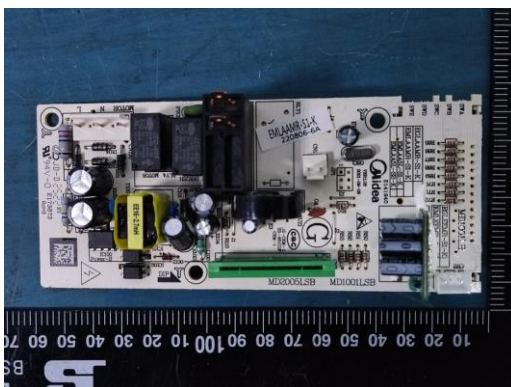
the original mother board top



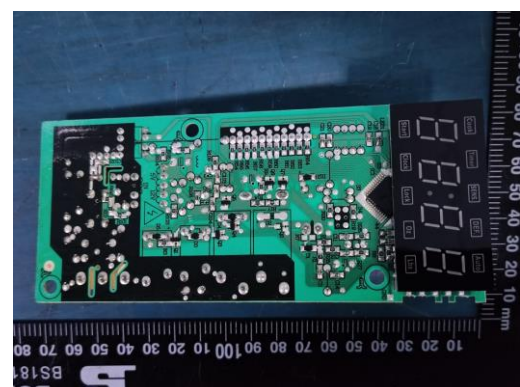
the original mother board-bottom



the new mother board top



the new mother board-bottom



Note: Differences only for mother board, PCB layout and some electronic components.

## 1.2 Test Standards and Results

The objective of the report is to perform testing according to 47 CFR Part 18:

No.	Identity	Document Title
1	47 CFR Part 18	Radio Frequency Devices

Test detailed items/section required by FCC rules and results are as below:

Emission			
Standard	Item	Class / Severity	Result
47 CFR PART 18	Conducted Emission (150 kHz to 30 MHz)	18.307(b)	PASS
	Radiated Emission (30 MHz to 1 GHz)	18.305(b)	PASS



## 1.3 Facilities and Accreditations

### 1.3.1 Facilities

#### **CNAS-Lab Code: L1659**

CCIC-SET is a third party testing organization accredited by China National Accreditation Service for Conformity Assessment (CNAS) according to ISO/IEC 17025. The accreditation certificate number is L1659.

#### **FCC-Registration No.: CN1283**

CCIC Southern Testing Co., Ltd EMC Laboratory has been registered and fully described in a report filed with the FCC (Federal Communications Commission). The acceptance letter from the FCC is maintained in our files. Designation Number: CN1283, valid time is until April 19th, 2023.

#### **ISED Registration: 11185A-1**

CCIC Southern Testing Co., Ltd. EMC Laboratory has been registered by Certification and Engineering Bureau of Industry Canada for the performance of radiated measurements with Registration No. 11185A-1 on Aug. 04, 2016, valid time is until April 19th, 2023.

#### **A2LA Code: 5721.01**

CCIC-SET is a third party testing organization accredited by A2LA according to ISO/IEC 17025. The accreditation certificate number is 5721.01.

### 1.3.2 Test Environment Conditions

During the measurement, the environmental conditions were within the listed ranges:

Temperature (°C):	15°C- 35°C
Relative Humidity (%):	25% -75%
Atmospheric Pressure (kPa):	86kPa-106kPa

### 1.3.3 Measurement Uncertainty

The uncertainty is calculated using the methods suggested in the "Guide to the Expression of Uncertainty in Measurement" (GUM) published by ISO.

Uncertainty of Conducted Emission:	Uc = 3.2 dB (k=2)
Uncertainty of Radiated Emission:(30MHz~1GHz)	Uc = 5.8 dB (k=2)
Uncertainty of Radiated Emission:(1~18GHz)	Uc = 5.1 dB (k=2)





## 2. EQUIPMENTS LIST

### A. Equipment List:

Description	Manufacturer	Model	Serial No.	Calibration Date	Calibration Due. Date
Test Receiver	KEYSIGHT	ESR3	A181103297	2022.06.24	2023.05.19
LISN	ROHDE&SCHWARZ	NSLK 8127	A210803670	2022.08.10	2023.07.19
Shield Room	Xinju Electronics	L9000*W4500* H3100	A181003230	2021.09.05	2024.07.29
EMI Test Receiver	ROHDE&SCHWARZ	ESIB7	A0501375	2022.05.23	2023.04.17
Broadband Ant.	ETC	MCTD2786	A150402240	2021.03.05	2024.03.03
3M Anechoic Chamber	Albatross	SAC-3MAC 9*6*6m	A0412375	2019.03.26	2023.03.25
EMI Test Receiver	ROHDE&SCHWARZ	ESW26	A180502935	2022.08.01	2023.07.19
5M Anechoic Chamber	Albatross	SAC-5MAC 12.8x6.8x6.4m	A0304210	2021.03.03	2023.03.24
EMI Horn Ant.	ETC	1209	A150402241	2021.01.02	2024.01.01
Spectrum Analyzer	ROHDE&SCHWARZ	ESW26	A180502935	2022.08.02	2023.07.20

### 3. EMC EMISSION TEST

#### 3.1 Test Procedure

Test Requirement: 47 CFR PART 18

Test Method: FCC/OST MP-5:1986

Power Supply: AC 120V/ 60Hz

Frequency Range: 2400-2500MHz

Detector: Peak

Limit: ISM equipment may be operated at any frequency above 9KHz and the frequency band 2400-2500MHz is allocated for use by ISM equipment

ISM frequency	Tolerance
6.78 MHz	±15.0 kHz
13.56 MHz	±7.0 kHz
27.12 MHz	±163.0 kHz
40.68 MHz	±20.0 kHz
915 MHz	±13.0 MHz
2,450 MHz	±50.0 MHz
5,800 MHz	±75.0 MHz
24,125 MHz	±125.0 MHz
61.25 GHz	±250.0 MHz
122.50 GHz	±500.0 MHz
245.00 GHz	±1.0 GHz

##### 3.1.1 Frequency For Normal Voltage

The operating frequency was measured using a spectrum analyzer. Starting with the EUT at room temperature, a 1100mL water load was placed in the center of the oven and the oven was operated at maximum output power. The fundamental operating frequency was monitored until the water load was reduced to 20 percent of the original load.

##### 3.1.2 Frequency For Line Voltage

The EUT was operated / warmed by at least 10 minutes of use with a 1100mL water load at room temperature at the beginning of the test. Then the operating frequency was monitored as the input voltage was varied between 80 and 125 percent of the nominal rating.

### 3.1.3 Measurement data

Operating Mode	Frequency(MHz)
Normal Voltage	2440.2-2485.7
Line Voltage	2443.6-2486.2

## 3.2 RADIATION HAZARD TEST

### 3.2.1 Test Setup

The EUT was set-up according to the FCC MP-5 and FCC Part 18 for radiation Hazard measurement. The measurement was using a microwave leakage meter to measure the radiation leakage in the as-received condition with the oven door closed A 770mL water load in a breaker was located in the center of the oven and the microwave oven was set to maximum power. While the oven operating, the microwave meter will check the leakage and then record the maximum leakage.

### 3.2.2 Limit

A maximum of 1.0mW/cm<sup>2</sup> is allowed in according with the applicable FCC standards

### 3.2.3 Test results

There was no microwave leakage exceeding a power level of 0.13 m W/cm<sup>2</sup> Observed at any point 5cm or more from the external surface of the oven

### 3.3 RF OUTPUT POWER MEASUREMENT

#### 3.3.1 Test Standard

Test Requirement	47 CFR PART 18
Test Method	FCC/OST MP-5:1986
Power Supply	AC120/60Hz

#### 3.3.2 EUT Operating mode

Test the EUT in microwave mode with full power.

#### 3.3.3 Test Data

Mass of Water(g)	Mass of the container(g)	ambient temperature (°C)	Initial temperature(°C)	Final temperature(°C)	Heating Time(S)	Output Power(Watt)
1100	280	21.8	10.7	33.1	120	886.13

Formula:

$$P = \frac{4.2 \times m_w(T_2 - T_1) + 0.9 \times m_c(T_2 - T_0)}{t}$$

P is the microwave power output, in watts

M<sub>w</sub> is the mass of the water, in grams

M<sub>c</sub> is the mass of the container, in grams

T<sub>0</sub> is the ambient temperature, in degrees Celsius

T<sub>1</sub> is Initial temperature of the water, in degrees Celsius

T<sub>2</sub> is final temperature of the water, in degrees Celsius

T is heating time, in seconds, excluding the magnetron filament heating-up time

## 4. CONDUCTED EMISSION

### 4.1.1 Conducted Emission Limit

Frequency range (MHz)	Conducted Limit (dB $\mu$ V)	
	Quasi-peak	Average
0.15 - 0.50	66 to 56	56 to 46
0.50 - 5	56	46
5 - 30	60	50

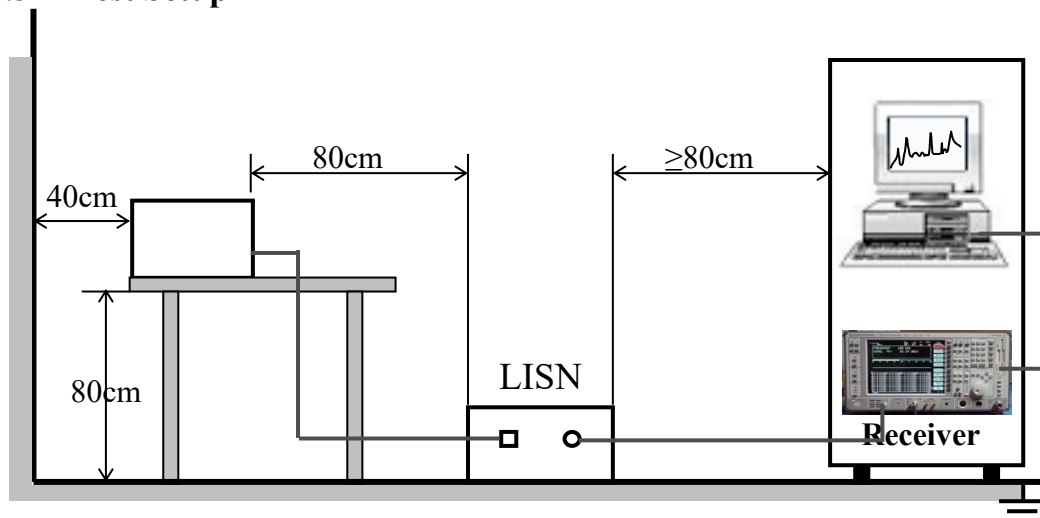
#### Note:

- The limit decreases linearly with the logarithm of the frequency in the range 0.15 MHz to 0.5 MHz.
- The lower limit is applicable at the transition frequency.

### 4.1.2 Test Procedure

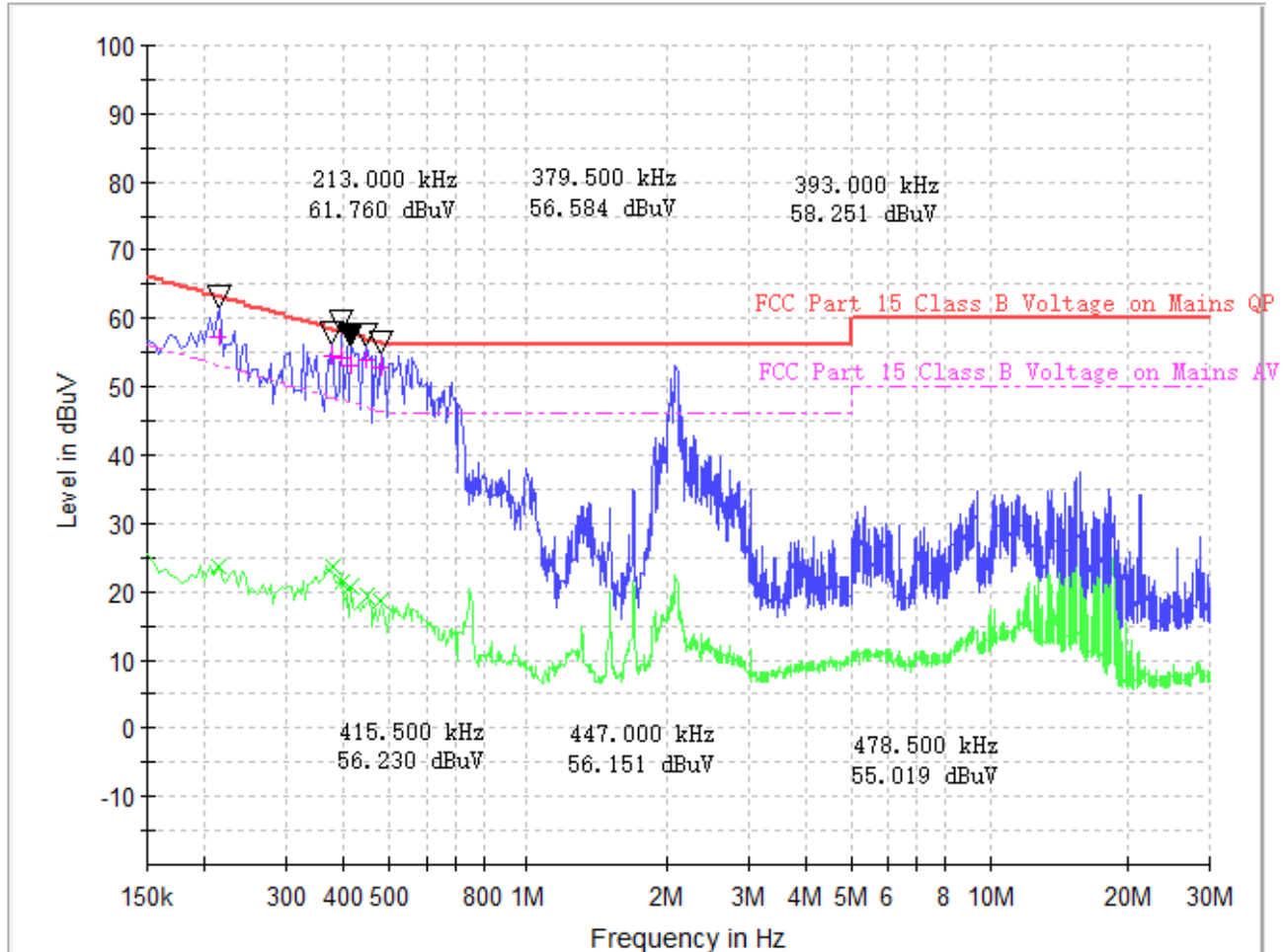
The EUT is placed on a 0.8m high insulating table, which stands on the grounded conducting floor, and keeps 0.4m away from the grounded conducting wall. The EUT is connected to the power mains through a LISN which provides 50 $\Omega$ /50 $\mu$ H of coupling impedance for the measuring instrument. The Common Antenna is used for the call between the EUT and the System Simulator (SS). A Pulse Limiter is used to protect the measuring instrument. The factors of the whole test system are calibrated to correct the reading.

### 4.1.3 Test Setup



## A. Test Result:

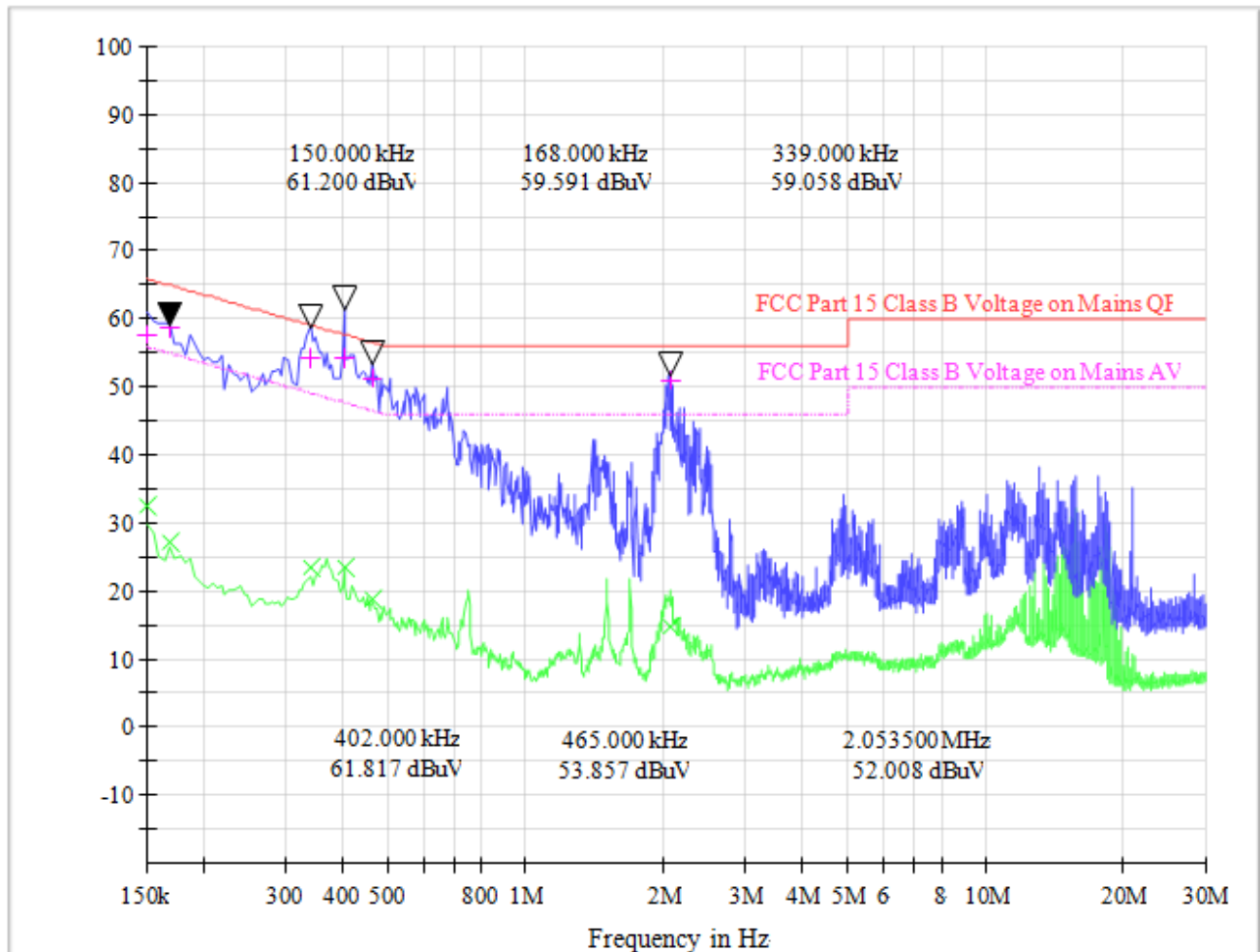
Mains terminal disturbance voltage, Setup1, L phase



(Plot A: L Phase)

Frequency (MHz)	Quasi Peak	Average (dB $\mu$ V)	Cabel Loss (dB)	Corr. (dB)	Margin - QPK	Limit - QPK	Margin - AV	Limit - AV (dB $\mu$ V)
0.213000	57.03	23.68	0.1	10.3	6.06	63.1	29.41	53.1
0.379500	54.49	23.46	0.1	10.3	3.80	58.3	24.83	48.3
0.393000	54.16	21.30	0.1	10.3	3.84	58.0	26.70	48.0
0.415500	53.10	20.54	0.1	10.3	4.44	57.5	27.00	47.5
0.447000	53.82	19.14	0.1	10.2	3.11	56.9	27.79	46.9
0.478500	52.65	18.41	0.1	10.2	3.72	56.4	27.96	46.4

## Mains terminal disturbance voltage, Setup 1, N phase



(Plot B: N Phase)

Frequency (MHz)	Quasi Peak	Average (dB $\mu$ V)	Cabel Loss (dB)	Corr. (dB)	Margin - QPK	Limit - QPK	Margin - AV	Limit - AV (dB $\mu$ V)
0.150000	57.91	32.78	0.1	10.2	8.09	66.0	23.22	56.0
0.168000	58.87	27.39	0.1	10.2	6.19	65.1	27.67	55.1
0.339000	54.49	23.45	0.1	10.3	4.74	59.2	25.78	49.2
0.402000	54.28	23.71	0.1	10.2	3.53	57.8	24.10	47.8
0.465000	51.26	19.02	0.1	10.2	5.34	56.6	27.58	46.6
2.053500	50.96	14.83	0.3	10.2	5.04	56.0	31.17	46.0

**Test Result: PASS**

## 5. RADIATED EMISSION

### 5.1.1 Radiated Emission Limits

- (a) ISM equipment operation on a frequency specified in §18.301 is permitted unlimited radiated energy in the band specified for that frequency.
- (b) The field strength levels of emissions which lie outside the bands specified in §18.301, unless otherwise indicated, shall not exceed the following:

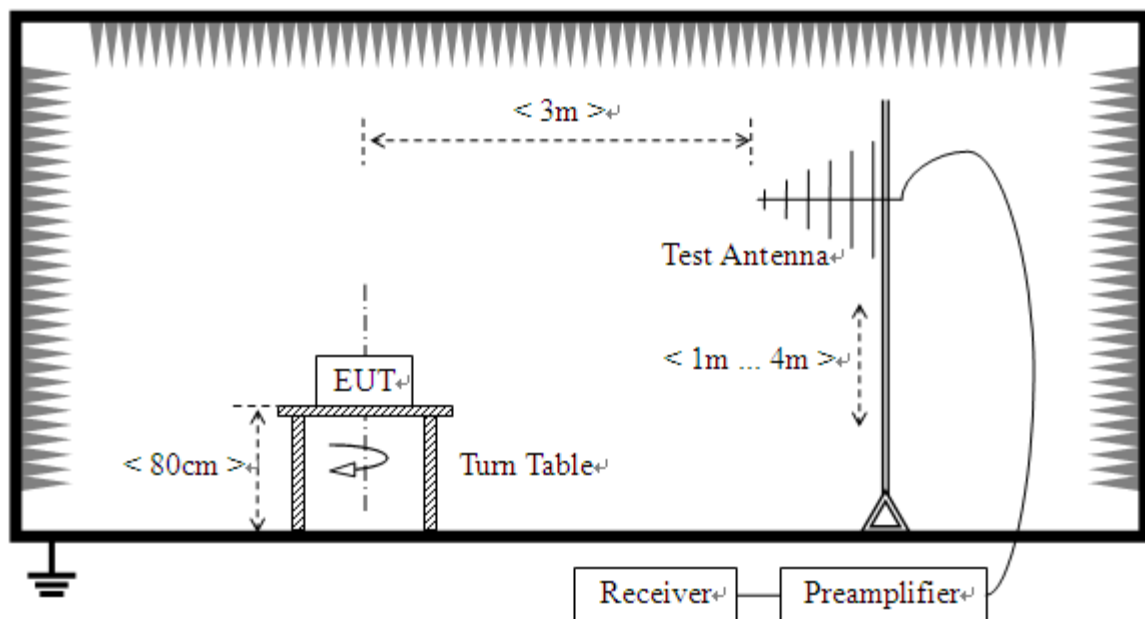
RF Power generated by equipment(watts)	Field strength limit(uV/m) @300m
Below 500	25
500or more	$25 \cdot \text{SQRT}(\text{power}/500)$

Power =886.13W

Limit= $20\lg(25 \cdot \text{SQRT}(\text{power}/500)) + 20\lg(300/3)$  @ 3m distance.

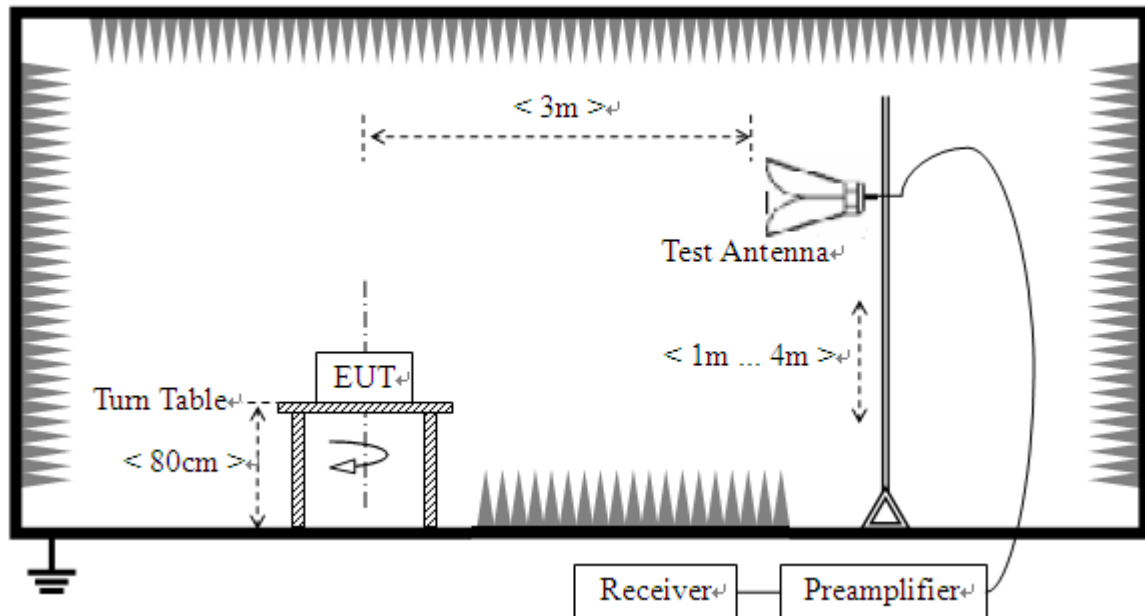
### 5.1.2 Test Setup

For radiated emissions from 30MHz to1GHz





For radiated emissions above 1GHz



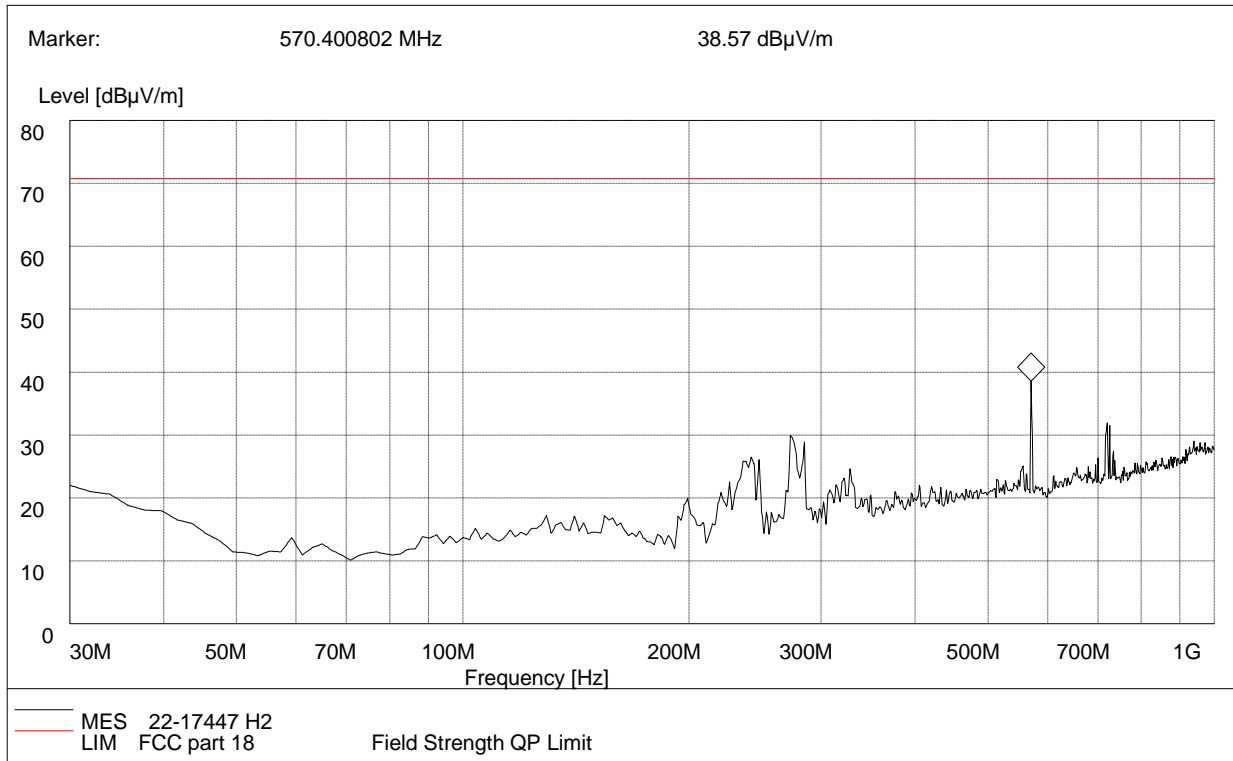
### 5.1.3 Test Procedure

- The measuring distance of at 3 m shall be used for measurements at frequency up to 1GHz. For frequencies above 1GHz, any suitable measuring distance may be used.
- The EUT was placed on the top of a rotating table 0.8 meters above the ground at a 3 meter open area test site. The table was rotated 360 degrees to determine the position of the highest radiation.
- The height of the equipment or of the substitution antenna shall be 0.8 m; the height of the test antenna shall vary between 1 m to 4 m. Both horizontal and vertical polarizations of the antenna are set to make the measurement
- The initial step in collecting conducted emission data is a spectrum analyzer peak detector mode pre-scanning the measurement frequency range. Significant peaks are then marked and then Quasi Peak detector mode re-measured.
- If the Peak Mode measured value compliance with and lower than Quasi Peak Mode Limit, the EUT shall be deemed to meet QP Limits and then no additional QP Mode measurement performed.
- For the actual test configuration, please refer to the related Item –EUT Test Photos.

**Note:** Both horizontal and vertical antenna polarities were tested and performed pretest to three orthogonal axis. The worst case emissions were reported

## Test Result:

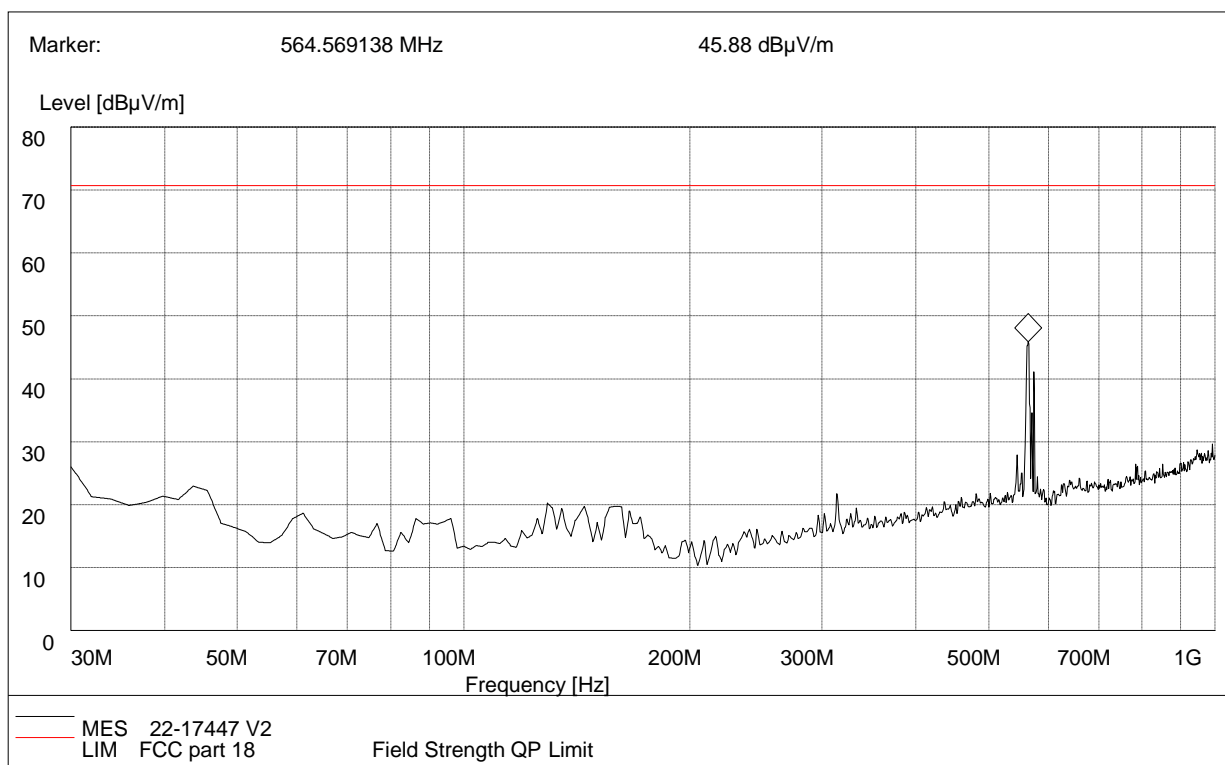
Radiation disturbances, antenna polarization: Setup1, Horizontal



(Plot A: Test Antenna Vertical, 30M - 1G)

Frequency (MHz)	Quasi Peak (dB μ V/m)	Bandwidth (kHz)	Antenna height (cm)	Limit (dB μ V/m)	Margin (dB)	Antenna	Verdict
235.15	24.11	120.000	100.0	70.44	46.33	Horizontal	Pass
272.92	28.11	120.000	100.0	70.44	42.33	Horizontal	Pass
284.63	27.46	120.000	100.0	70.44	42.98	Horizontal	Pass
326.54	23.23	120.000	100.0	70.44	47.21	Horizontal	Pass
569.87	37.49	120.000	100.0	70.44	32.95	Horizontal	Pass
720.08	31.37	120.000	100.0	70.44	39.07	Horizontal	Pass

## Radiation disturbances, antenna polarization: Setup1, Vertical



(Plot B: Test Antenna Horizontal, 30M - 1G)

Frequency (MHz)	Quasi Peak (dB $\mu$ V/m)	Bandwidth (kHz)	Antenna height (cm)	Limit (dB $\mu$ V/m)	Margin (dB)	Antenna	Horizontal
30.25	24.63	120.000	100.0	70.47	45.84	Vertical	Pass
42.59	21.06	120.000	100.0	70.47	49.41	Vertical	Pass
128.44	19.74	120.000	100.0	70.47	50.73	Vertical	Pass
159.47	18.63	120.000	100.0	70.47	51.84	Vertical	Pass
561.73	44.11	120.000	100.0	70.47	26.36	Vertical	Pass
573.10	40.89	120.000	100.0	70.47	29.58	Vertical	Pass

**Above 1GHz, Setup1**

NO.	Freq. [MHz]	Level [dB $\mu$ V/m]	Factor [dB]	Limit [dB $\mu$ V/m]	Margin [dB]	Height [cm]	Angle [°]	Polarity
1	1756.39	61.48	-13.18	70.47	8.99	100	53	Vertical
2	2432.25	59.44	-10.76	70.47	11.03	100	268	Vertical
3	4905.71	57.49	-1.70	70.47	12.98	100	170	Vertical
4	6287.30	58.19	1.08	70.47	12.28	100	254	Vertical
5	9062.23	59.06	3.86	70.47	11.41	100	314	Vertical
6	12279.51	57.62	5.78	70.47	12.85	100	275	Vertical

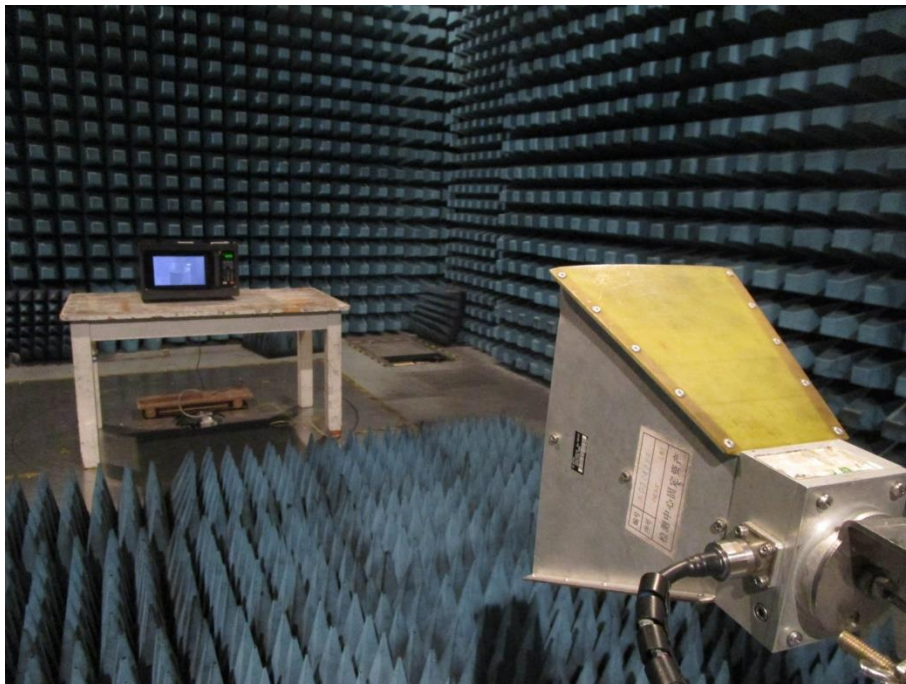
NO.	Freq. [MHz]	Level [dB $\mu$ V/m]	Factor [dB]	Limit [dB $\mu$ V/m]	Margin [dB]	Height [cm]	Angle [°]	Polarity
1	1714.11	57.80	-13.09	70.47	12.67	100	253	Horizontal
2	2462.33	56.48	-10.80	70.47	13.99	100	144	Horizontal
3	5381.74	55.32	-2.16	70.47	15.15	100	340	Horizontal
4	7179.51	57.85	2.25	70.47	12.62	100	329	Horizontal
5	9376.23	59.08	3.76	70.47	11.39	100	119	Horizontal
6	13567.1	59.82	7.61	70.47	10.65	100	154	Horizontal

## APPENDIX I: PHOTOGRAPHS OF EMC TEST CONFIGURATION

### 1. Radiated Emission Measurement below 1GHz



### 2. Radiated Emission Measurement above 1GHz



### 3. Conducted emission at AC mains input/output port Measurement





## APPENDIX II: PHOTOGRAPHS OF PRODUCT PHOTO

External Photo

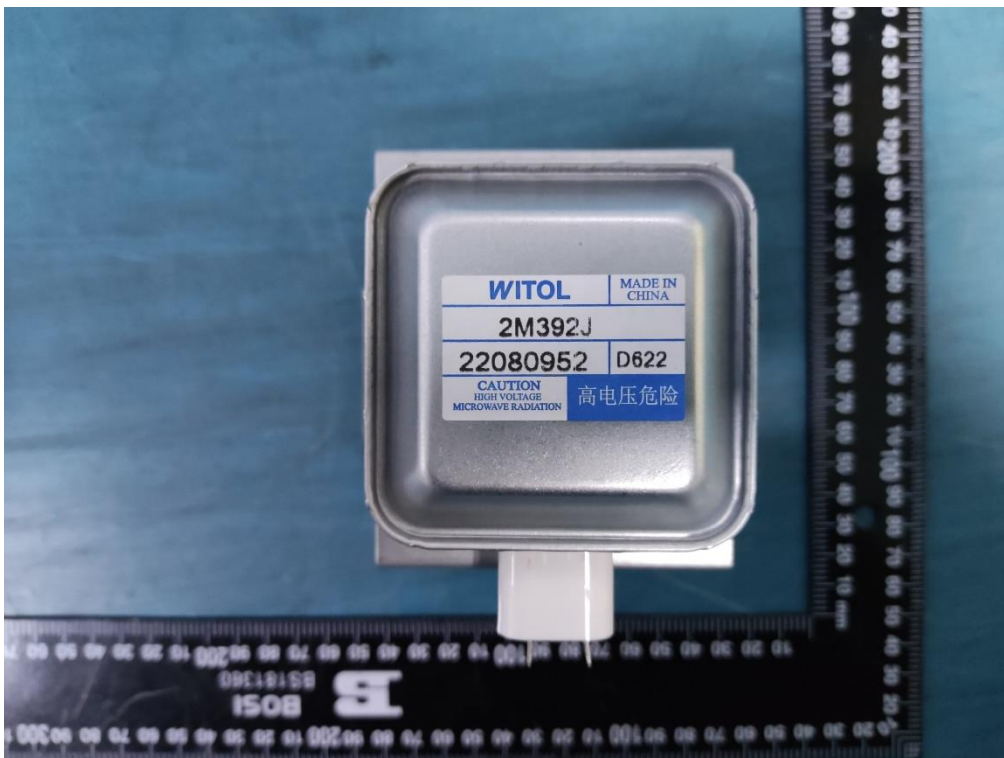
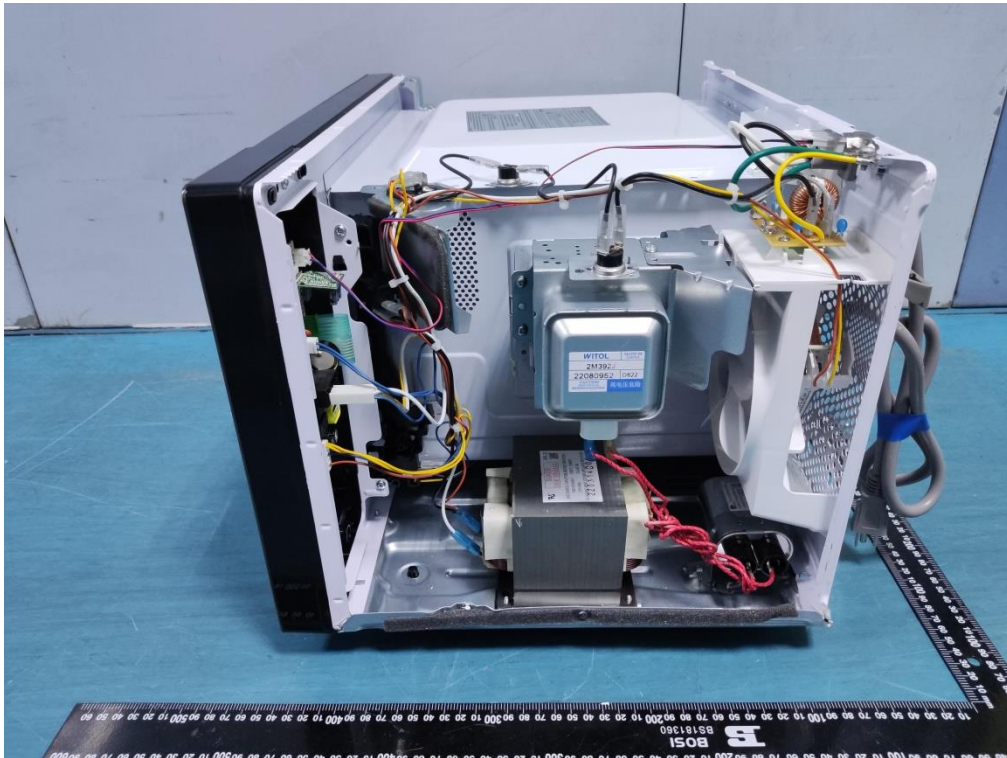




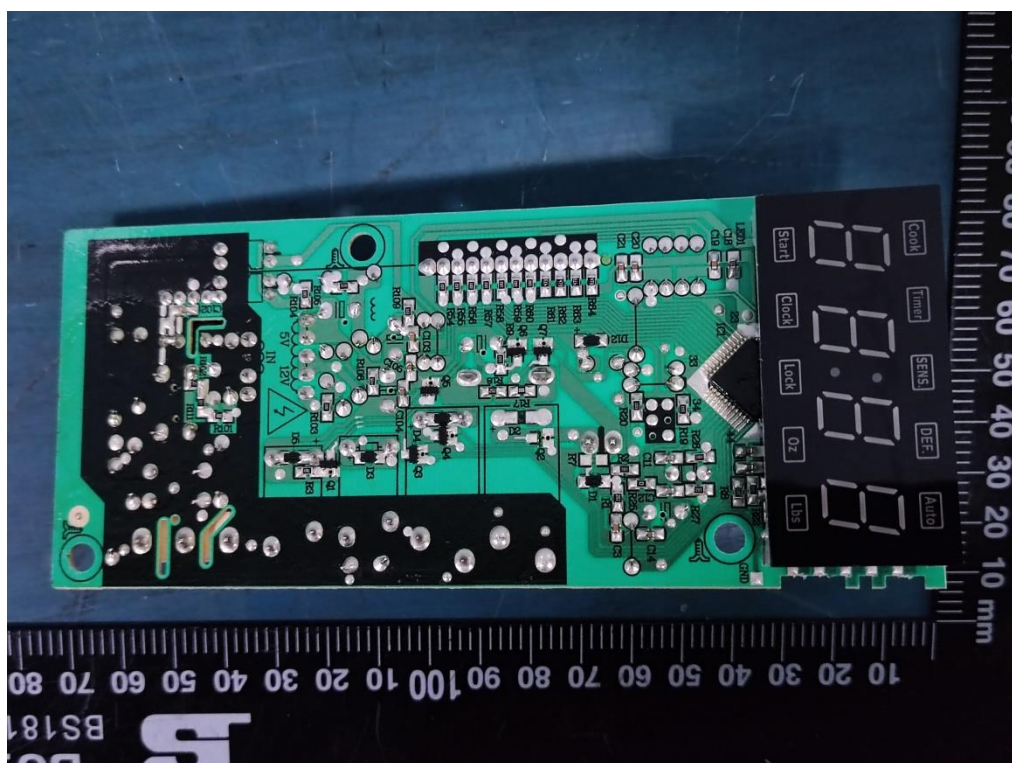
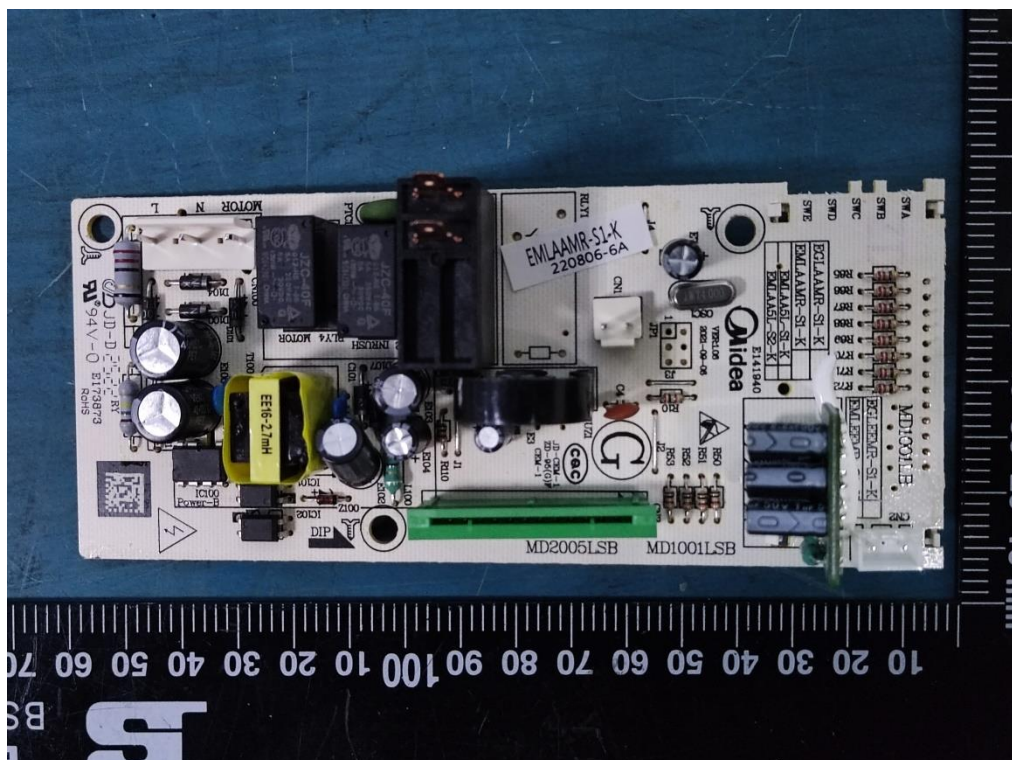




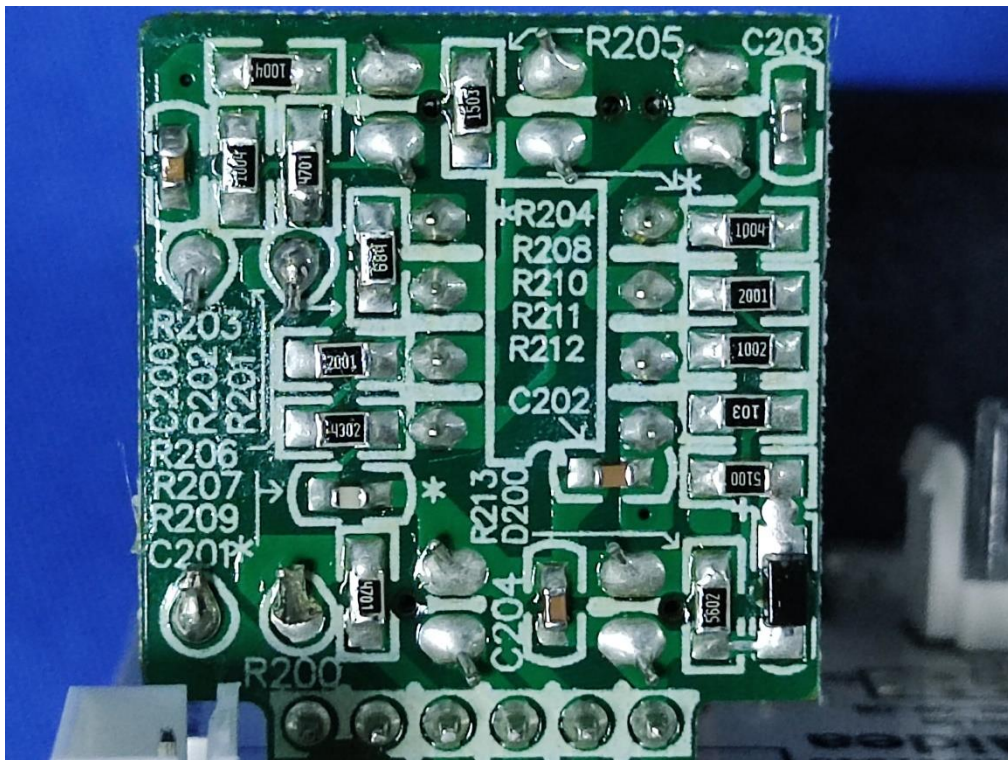
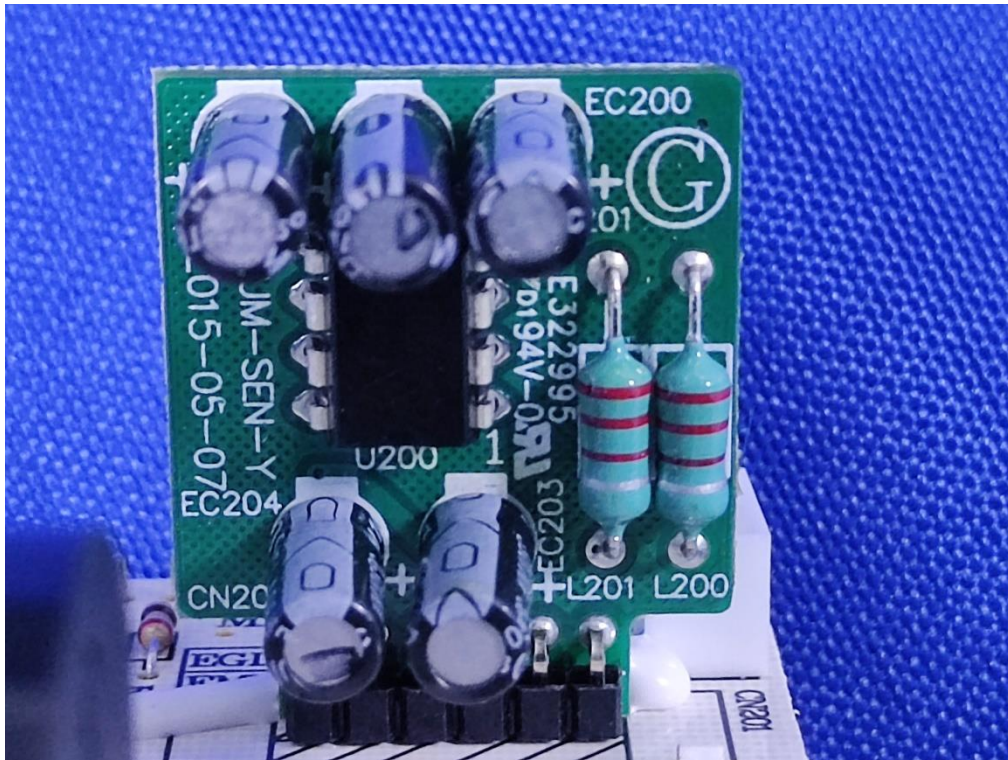
### Internal Photo

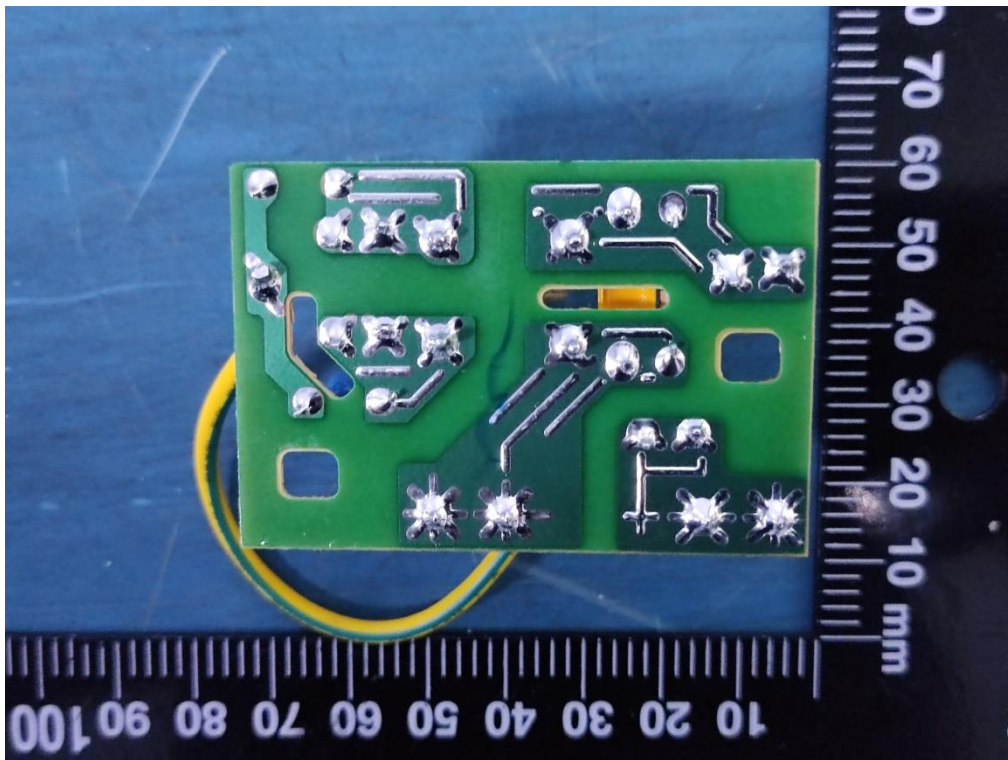
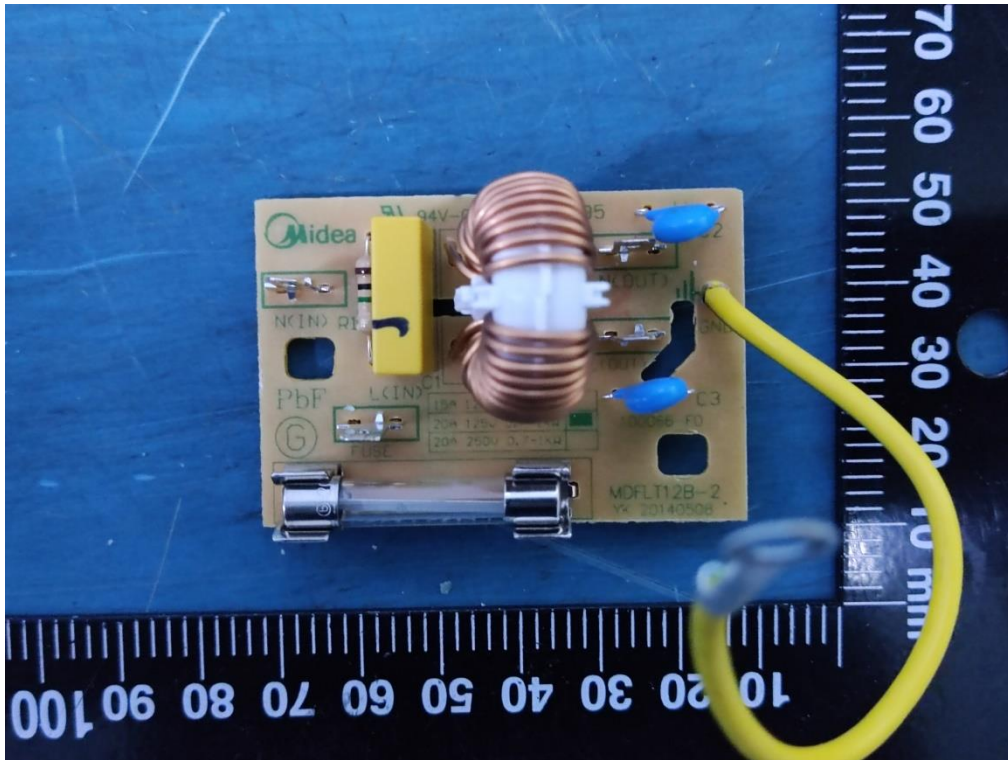




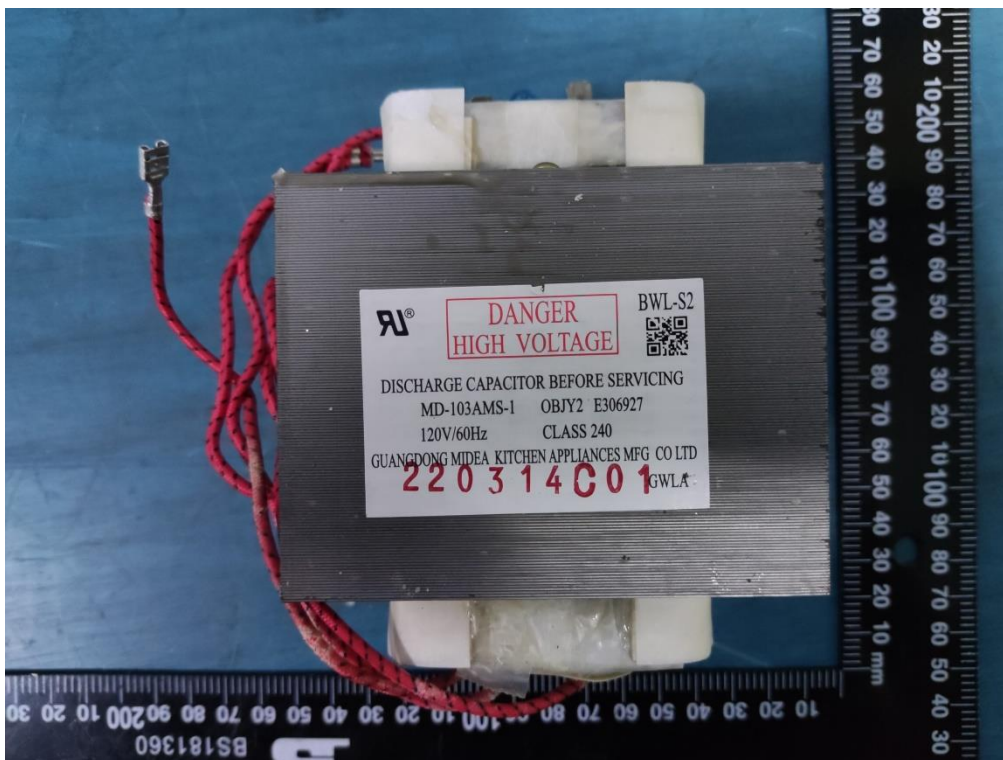












\*\*\* End of Report \*\*\*