

# Premier Pet



## 1000 ft. Trainer

GDT00-18126 Product Manual



Have questions about your Bark Collar or need training tips for your pet?  
Our Customer Care representatives are here to help you.

Call our USA-based Customer Care Center at  
+1 (866) 381-2785

USA & Canada: Mon-Fri 8am-8pm EST | Sat 9am-5pm EST

This product includes a one year warranty

Call, click, or chat with us before you return your product

[premierpet.com](http://premierpet.com)

## Important Safety Information

### Explanation of Attention Words and Symbols Used in This Guide



This is the safety alert symbol. It is used to alert you to potential personal injury hazards. Obey all safety messages that follow this symbol to avoid possible injury or death.

#### **⚠ WARNING**

**WARNING** indicates a hazardous situation which, if not avoided, could result in death or serious injury.

#### **⚠ CAUTION**

**CAUTION**, used with the safety alert symbol, indicates a hazardous situation which, if not avoided, could result in minor or moderate injury.

#### **CAUTION**

**CAUTION**, used without the safety alert symbol, indicates a hazardous situation which, if not avoided, could result in harm to your pet.

---

#### **⚠ WARNING**

- Do not use this product if your dog is prone to aggressive behavior. Aggressive dogs can cause severe injury and even death to their owner and others. If you are unsure whether this product is appropriate for your dog, please consult your veterinarian or a certified trainer.
- This device contains Lithium-Ion (Li-Ion) batteries; never incinerate, puncture, deform, short-circuit, or charge with an inappropriate charger. Fire, explosion, property damage, or bodily harm may occur if this warning is not followed.

#### **⚠ CAUTION**

- This product is not a toy. Keep it away from the reach of children. Use it only as a bark deterrent.

- It is vitally important that you and your pet remain safe while learning during on-leash training. Your pet should be on a strong leash, long enough for him to attempt to chase an object, but short enough for him not to reach a road or other hazard. You must be physically strong enough to restrain your pet if he tries to chase something.

## **CAUTION**

- Proper fit of the collar is important. A collar worn for too long or made too tight on the pet's neck may cause skin damage ranging from redness to pressure ulcers. This condition is commonly known as bed sores.
- Avoid leaving the collar on a pet for more than 12 hours per day.
- When possible, reposition the collar on the pet's neck every 1 to 2 hours.
- Regularly recheck the fit to prevent excessive pressure; follow the instructions in this manual.
- You may need to trim the hair in the area of the contact points. However, never shave the dog's neck; this may lead to a rash or infection.
- Never connect a leash to a collar with contact points. It will cause excessive pressure on the contact points.
- When connecting a leash to a separate collar, do not allow it to put pressure on the collar.
- Wash the dog's neck area and the contact points of the collar weekly with a damp cloth.
- Examine the contact area daily for signs of a rash or a sore.
- If a rash or sore is found, discontinue using this product until the skin has healed.
- If the condition persists beyond 48 hours, see your veterinarian.
- For additional information on bed sores and pressure necrosis, please visit our website.
- This product is only for use with healthy pets. If you're not certain that your pet is in good health, we recommend that you take your pet to a veterinarian before using this product.

## How it Works

The Premier Pet® Remote Trainer can be used to both stop bad behaviors and teach your dog good behaviors. The trainer has tone (beep), vibration and 16 levels of static stimulation. The easy-to-use design only requires a press of a button and the signal is sent to the collar. A second collar can be added to the same remote (extra collar sold separately) for a two-dog system.

- **Tone:** beeps to get your dog's attention or mark a behavior.
- **Vibration:** vibrates the training collar.
- **Static Stimulation:** administers a stimulation with 16 levels of intensity.

*NOTE: Add-A-Dog® Collar sold separately. Contact Customer Care to order +1 (866) 381-2785.*

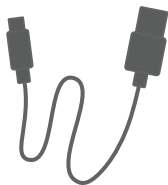
## What's Included



Contact Points



Silicone Covers



USB Charging Cable

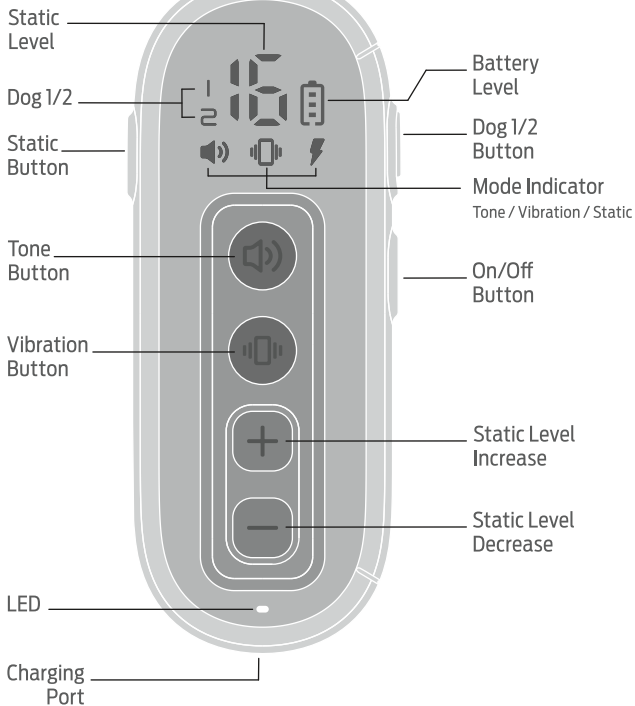


Test Light Tool

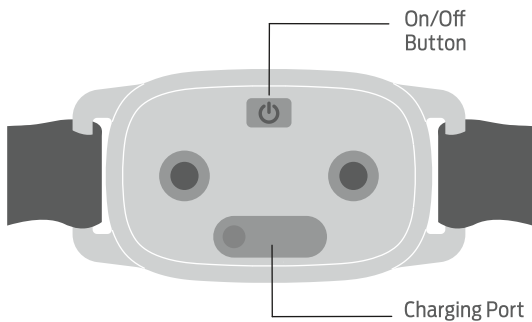
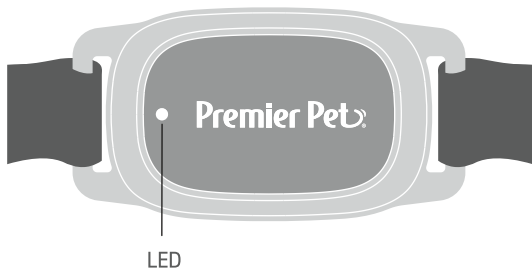


Contact Spring

## Remote



# Training Collar



## Charge the Collar and Remote

1. Lift the rubber cover protecting the charging port on the training collar and connect the charger.
2. Plug the opposite end of the charger into a compatible USB charging port.
3. The LED on the training collar will be solid red when charging and will turn green when it is fully charged.
4. When the collar has finished charging, remove the charger from the collar and replace the rubber cover.
5. Connect the charger to the bottom of the remote.
6. Leave the opposite end of the charger plugged into the compatible USB charging port that was used to charge the collar.
7. The battery icon bars on the remote will continually cycle while charging and then remain solid with 3 bars when the remote is fully charged.

**The initial charge for both devices takes 4 hours. Subsequent charges take 2-3 hours. Excessive charging can shorten battery life. Only charge your remote or collar when the batteries are low.**

### **Battery Life and Low Battery LEDs (Depending on Use):**

Collar Battery Life - Up to 11 days

Remote Battery Life - Up to 27 days

#### **Collar Low Battery Indicator**

Red LED will appear.

#### **Remote Low Battery Indicator**

Digital battery icon on the remote display will show 1 bar.

---

## Turn the Collar On/Off

### **To Turn the Collar On**

Press the On/Off button once and release. The green LED will come on, indicating the collar is on and ready to receive a signal from the remote.

### **To Turn the Collar Off**

Press and hold the On/Off button for approximately 3 seconds. The red LED will flash and the unit will shut off. Release the On/Off button. If there is no operation after 90 seconds, the collar will enter a sleep state to conserve battery life.

*Quick Tip:* When you are not using the collar, you will want to turn it off. This will increase the battery life.

## **Turn the Remote On/Off**

### **To Turn the Remote On**

Press and hold the On/Off button on the side of the remote until the LCD display lights up and displays the Dog Setting (1 or 2) and the battery power level.

### **To Turn the Remote Off**

Press and hold the On/Off button on the side of the remote until the LCD display powers off.

---

## **Pair the Remote and the Collar**

1. Use the Dog 1/2 button on the side of the remote and slide up to select Dog 1.
2. Turn off the collar by pressing and holding the On/Off button for 3 seconds.
3. Press and hold the On/Off button on the collar for 3 seconds until the solid green LED blinks slowly red and green.
4. Release the On/Off button.
5. Press and hold the tone and vibration buttons on the remote simultaneously for 3 seconds.
6. The green LED on the collar will blink 3 times.
7. The pairing is now complete and the trainer is ready to use.



# Add-A-Dog® Pairing for a Two-Dog System

With the purchase of an additional Premier Pet® Add-A-Dog® training collar, this remote can be paired with two collars. Use the Dog 1/2 button on the side of the remote to slide down and select Dog 2, and then follow the steps on the previous page to pair the second collar.

*NOTE: Add-A-Dog® Collar sold separately. Contact Customer Care to order +1 (866) 381-2785.*

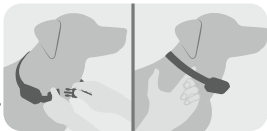
## Fit the Collar

### Contact Points and Silicone Covers

1. Short contact points are included. Please choose the size that will make best contact with your dog's neck. Use the test light tool to tighten the contact points until snug. Do NOT over tighten.
2. The Contact Spring can also be used with or without the contact points for additional neck contact.
3. The Silicone covers can be used for dogs that may have sensitivity to the contact points. The static stimulation emits through the silicone covers.

**Important: The proper fit and placement of your training collar is important for effective operation.**

1. Start with the collar turned off and your dog standing comfortably, not sitting.
2. Place the collar on your pet so that the Premier Pet® logo is right side up and the collar is directly under your dog's chin. Center the contact points underneath your dog's neck, touching the skin. *NOTE: It is sometimes*



*necessary to trim the hair around the contact points to make sure that contact is consistent.*

3. Check the tightness of the collar by inserting one finger between the collar and your dog's neck. The fit should be snug but not constricting.
4. Allow your dog to wear the collar for several minutes, then recheck the fit. Check the fit again as your dog becomes more comfortable with the collar.

## CAUTION

Do not shave the pet's neck, as this may increase the risk of skin irritation. The collar should not be worn for more than 12 hours out of every 24-hour period. Leaving the collar on too long could lead to skin irritation.

## Find the Best Stimulation Level

**Important: Always start at the lowest level and work your way up.**

The remote trainer has 1 tone with a non-adjustable level, 1 vibration with a non-adjustable level and 16 adjustable levels of static stimulation. This allows you to choose the stimulation that is best for your pet. We recommend training with tone and vibration, or the lower levels of static stimulation when needed. Once you have placed the training collar on your pet, it is time to find the "recognition level". The "recognition level" is the stimulation level that your dog begins to notice. It should not make your pet uncomfortable. Your pet should NOT vocalize or panic when receiving stimulation. If this happens, the stimulation is too high and you need to go back to the previous level. Follow the steps below to find your pet's recognition level:

- Choose tone or vibration to start, and press the tone button or the vibration button continuously for 1 to 2 seconds.
- If your pet shows no reaction to the tone or vibration, repeat again several times before moving to static stimulation.
- Choose level 1 of static stimulation by pressing the "-" button on the remote until you see the number 1 shown on the LCD display. Press the static button continuously for 1 to 2 seconds.

- If your pet shows no reaction, repeat this stimulation level several times before moving up to the next level.
- **Increase the static stimulation levels by pressing the "+" button on the remote. Move up through the static stimulation levels until your pet reliably responds to the stimulation.**
- If your pet continues to show no response to the maximum level of 16, check the fit of the training collar. You might also want to test it on your hand at a lower level to ensure the collar is working.

If all of these steps have been done and your pet continues to show no reaction to the stimulation, please contact our Customer Care Center.

*NOTE: As a built-in safety feature, if the static stimulation button is pressed for 10 continuous seconds, the collar will automatically shut off.*

---

## **Terms of Use and Limitation of Liability**

### **1. Terms of Use**

The use of this product is subject to your acceptance without modification of the terms, conditions and notices contained with this product. Use of this product implies acceptance of all such terms, conditions, and notices. If you do not wish to accept these terms, conditions, and notices, please return the Product unused, in its original packaging and at your own cost and risk to the relevant Customer Care location together with proof of purchase for a full refund.

### **2. Proper Use**

Proper Use includes, without limitation, reviewing the entire Operating Guide and any specific safety information statements. The specific temperament or size/weight of your pet may not be suitable for this product. If you are unsure whether this Product is appropriate for your pet, please consult your veterinarian or certified trainer prior to use. For products used with pets where training is desired, Radio Systems Corporation recommends that these training products are not used if your pet is aggressive and accepts no liability for determining suitability in individual cases.

3 **No Unlawful or Prohibited Use**

This product is designed for use with pets only. This product is not intended to harm, injure or provoke. Using this product in a way that is not intended could result in violation of Federal, State or local laws.

4. **Limitation of Liability**

In no event shall Radio Systems Corporation or any of its associated companies be liable for (i) any direct, indirect, punitive, incidental, special or consequential damage and/or (ii) any loss or damages whatsoever arising out of or connected with the use or misuse of this product. The Purchaser assumes all risks and liability from the use of this product to the fullest extent permissible by law.

5. **Modification of Terms and Conditions**

Radio Systems Corporation reserves the right to change the terms, conditions and notices governing this product from time to time. If such changes have been notified to you prior to your use of this product, they shall be binding on you as if incorporated herein.

---

## **Warranty**

### **One Year Non-Transferrable Limited Warranty**

This Product has the benefit of a limited manufacturer's warranty. Complete details of the warranty applicable to this Product and its terms can be found at [premierpet.com](http://premierpet.com).

---

## **Important Recycling Advice**

Please respect the Waste Electrical and Electronic Equipment regulations in your country. This equipment must be recycled. At the end of the product life, do not place it in the normal municipal waste system. Please check the regulations in your area or return it to where it was purchased so that it can be placed in our recycling system. If these options are not possible, please contact the Customer Care Center for further information.

# Compliance

## FCC

This device complies with part 15 of the FCC Rules. Operation is subject to the following two conditions: (1) This device may not cause harmful interference, and (2) this device must accept any interference received, including interference that may cause undesired operation.

**NOTE:** This equipment has been tested and found to comply with the limits for a Class B digital device, pursuant to part 15 of the FCC Rules. These limits are designed to provide reasonable protection against harmful interference in a residential installation. This equipment generates, uses, and can radiate radio frequency energy and, if not installed and used in accordance with the instructions, may cause harmful interference to radio communications. However, there is no guarantee that interference will not occur in a specific installation. If interference does occur to radio or television reception, which can be determined by turning the equipment off and on, the user is encouraged to try to correct the interference by one or more of the following measures:

- Reorient or relocate the receiving antenna.
- Increase the separation between the equipment and the collar.
- Connect the equipment to an outlet on a circuit different from that to which the collar is connected
- Consult the Customer Care Center for help.

**CAUTION: Modification or changes to this equipment not expressly approved by Radio Systems Corporation may void the user's authority to operate the equipment.**

# Premier Pet

**FCC Caution:**

This device complies with part 15 of the FCC Rules. Operation is subject to the following two conditions: (1) This device may not cause harmful interference, and (2) this device must accept any interference received, including interference that may cause undesired operation.

Any Changes or modifications not expressly approved by the party responsible for compliance could void the user's authority to operate the equipment.

**Note:** This equipment has been tested and found to comply with the limits for a Class B digital device, pursuant to part 15 of the FCC Rules. These limits are designed to provide reasonable protection against harmful interference in a residential installation. This equipment generates uses and can radiate radio frequency energy and, if not installed and used in accordance with the instructions, may cause harmful interference to radio communications. However, there is no guarantee that interference will not occur in a particular installation. If this equipment does cause harmful interference to radio or television reception, which can be determined by turning the equipment off and on, the user is encouraged to try to correct the interference by one or more of the following measures:

- Reorient or relocate the receiving antenna.
- Increase the separation between the equipment and receiver.
- Connect the equipment into an outlet on a circuit different from that to which the receiver is connected.
- Consult the dealer or an experienced radio/TV technician for help.

The device has been evaluated to meet general RF exposure requirement. The device can be used in portable exposure condition without restriction.