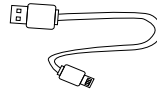


## What's in the box



Headphone 1pc



USB cable 1pc

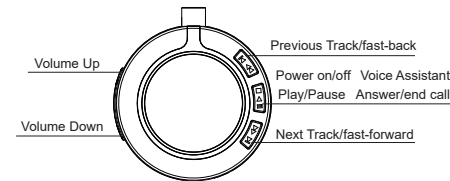


User manual 1pc



Bags 1pc

### Key functions



## Button Function

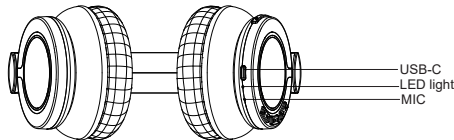
- Click + area(refer to product Diagram) to Volume up.
- Click - area(refer to product Diagram) to Volume down.
- Click Previous track area to change the channel, and long press to fast-back.
- Click Play area to play/pause, and long press to power on/off Double click for voice assistant
- Click to answer when a incoming call and click to end it.Hold 2s to reject the call.
- Click next track area to change the channel, and long press to fast-forward.

NOTE: Press gesture and touching the correct area will offer you fluently experience

## Troubleshooting

- No power
  - Recharge your wireless bluetooth headphone using the Type-C cable.
- Music is not playing over Bluetooth
  - Make sure your Bluetooth device has A2DP profile. Check if both devices are paired and connected over Bluetooth. Restart the headphone to reconnect your Bluetooth device.
- Bluetooth device will not reconnect with the headphone
  - Navigate to your Bluetooth settings menu on your Bluetooth device, tap "EchoDeep", and select "Forget".
  - Follow the steps to pair your device again. Or, press & hold the power button on the headphone (while powered on) to disconnect the headphones from any connected devices. Then follow the steps to reconnect your device.

## Key functions



## Charge It

- On the right earcup, carefully plug the Type-C cable into Type-C charging port, and connect the other end of the cable to either a computer USB port or to a USB-compatible car or wall charger.
- Solid red LED light will appear to indicate when the headphone is charging.
- When charging is complete, the LED light will turn Blue.
- Charging time is approximately 2 hours.

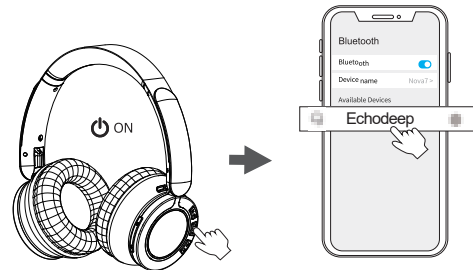
**LED display**

- Pairing:blue light fast flash    Paired:blue light off  
Charging:red light on    Fully charged:Blue light on

**Notes:**

- 1.Charging with DC5V/1A adaptor or USB Cable
- 2.While max/minium volume,you can hear a prompt tone

## Bluetooth Connection



1. Turn on the headphone, you will hear the boot
2. After open the phone Bluetooth, Click the "Echodeep" to pairing

Notes:

- 1.If it is not paired for 5 minutes after booting, it will shut down.  
When low battery,you can hear the prompt tone then the headphone will power off automatically
- 2.If Apple users feel that the volume is low, you can turn off this setting on the phone(Settings-Sounds & Haptics-Headphone Safety-Reduce Loud Sounds)

## Specifications

## Specifications

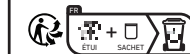
Product Type	Wireless Headphones
Speaker system	Stereo
Dimensions	185*190*85mm
Weight	227g
Driver	64Ω 40mW φ40mm
Audio Playtime	Approx 20 hours(@50-60% Volume)
BT Version	V5.3
Rated Power	5 Watts
Power Supply	Built-in 3.7V 300mAh Lithium Battery
Charging Time	Approx 2.5 hours(USB C )
Frequency Response	100-20KHZ
Range	up to 10m
Input power:	DC 5V/1A
Built-in Microphone	

## Safety Instructions

1. Keep the product away from extremely hot and cold environments, it will damage the battery and circuit.
2. Avoid liquid immersion into the product.
3. Do not disassemble the product.
4. Do not use concentrated chemical products or detergents to clean the product.
5. Use only 5V/1A power supply. Connecting the power supply voltage too high may cause serious damage.
6. Do not randomly discard or place the product near fire or high temperature to avoid the danger of explosion.



Made in China



FCC statement

This device complies with part 15 of the FCC Rules. Operation is subject to the following two conditions: (1) this device may not cause harmful interference, and (2) this device must accept any interference received, including interference that may cause undesired operation.

Any changes or modifications not expressly approved by the party responsible for compliance could void the user's authority to operate the equipment.

NOTE: This equipment has been tested and found to comply with the limits for a Class B digital device, pursuant to Part 15 of the FCC Rules. These limits are designed to provide reasonable protection against harmful interference in a residential installation. This equipment generates, uses and can radiate radio frequency energy and, if not installed and used in accordance with the instructions, may cause harmful interference to radio communications. However, there is no guarantee that interference will not occur in a particular installation. If this equipment does cause harmful interference to radio or television reception, which can be determined by turning the equipment off and on, the user is encouraged to try to correct the interference by one or more of the following measures:

- Reorient or relocate the receiving antenna.
- Increase the separation between the equipment and receiver.
- Connect the equipment into an outlet on a circuit different from that to which the receiver is connected.
- Consult the dealer or an experienced radio/TV technician for help.

The device has been evaluated to meet general RF exposure requirement. The device can be used in portable exposure condition without restriction