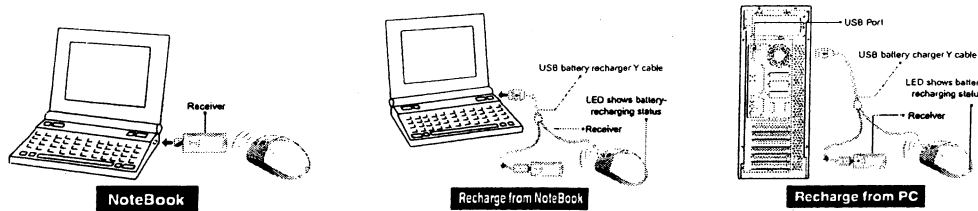
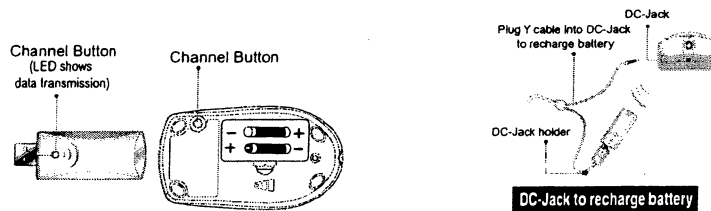


Hardware Installation

1. You can connect the receiver to a USB port of either a PC or Notebook.



2. If you want to connect receiver to PC or recharge the batteries, please using the USB battery charger Y cable. **(Please do not connect the receiver directly to PC that was placed under a table, or you will get RF performance decreased easily.)**
3. Install two AAA rechargeable batteries in the mouse. **(Please do not put un-rechargeable batteries into mouse when you are charging the batteries that will make your mouse or main-board broken or burning!)**



4. Turn on your computer.
5. After you open Windows, please press the button under the receiver first and then press the button under the mouse for channel setting. **Make sure each button press is for at least three seconds.**
6. First time you use this product, please run out of remains then recharge the batteries at least 12 to 16 hours.

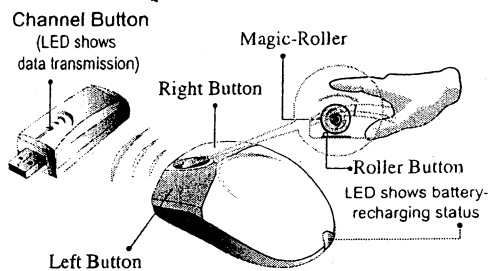
Warning:

1. Please do not use Wireless PowerScroll NBEye on a desk that is made of glass, mirror, iron, or black velvet. Also, a flat surface is necessary or the Optical Sensor could be error easily. When you use Wireless PowerScroll NBEye on a desk that is made of metal, try using a pad and reduce the receiving distance.
2. Before the first installation is completed (channel setting ready), the mouse will not work in DOS.
3. The Wireless PowerScroll NBEye channel provides 256 ID-codes, and it automatically selects the ID # for your mouse. You can only set up one Wireless PowerScroll NBEye at a time. But if you have additional Wireless PowerScroll NBEye sets in an area of 10 square meters, more interference will occur between the receiver and your mouse.
4. If you feel the mouse does not move smooth as usual, that the batteries have lost their charge, so please replace them or using the USB battery charger Y cable to recharging the batteries. The LED of mouse's tail shows battery-recharging status from shining to die out till battery full. **You should set up channel again every time you replace batteries.**
5. If you need to buy new batteries, please choose Ni-MH (Nickel-Metal-Hydrate) batteries with AAA size, 550 to 700 mAH and 1.2 Voltages.
6. The Wireless PowerScroll NBEye with radio frequency gives you free movement and an enjoyable experience. For optimal performance, place the receiver at least 8 inches (about 20 cm) away from the mouse and other electrical devices, such as the computer, monitor, and etc.

Software Installation

1. Make sure the mouse is connected to the computer.
2. Put Setup the disk (or CD) into the disk drive.
3. Follow the instructions on the screen to finish the software installation.

Factory Setting



- Magic-Roller** Press the “Magic-Roller” to surf the Internet and Windows documents
- Left Button** Provides traditional mouse functions such as click, double click and drag.
- Right Button** You can assign this button frequently used keyboard and mouse functions in addition to features like EasyJump, Auto-Panning, Zoom, etc.
- Roller Button** You can assign this button frequently used keyboard and mouse functions in addition to features like EasyJump, Auto-Panning, Zoom, etc.

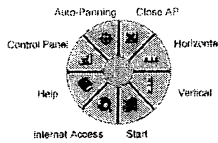
MouseMate Software Features

- Browsing Speed** You can adjust the browsing speed when you surf the Internet or Windows documents.
- Browsing Direction** Move the “Magic-Roller” forward and the screen will browse to the top of the document. Move it in reverse and the document will go in the opposite direction
- Button Find** Automatically positions the cursor on the default button, usually the OK button, when the dialog box appears on your screen.
- Trails** This option makes it easier to find the cursor when using an LCD monitor.
This option cannot be used if your monitor does not support it.
- Loop** When you move the cursor to the top (or bottom) of the screen, it will automatically move the cursor to the bottom (or top) of the screen.
- Mouse Speed** This function lets you adjust the speed at which the pointer moves across the screen.
- Double Click Speed** Use this function to set the double click speed of the mouse.
- Swap Left/Right** Select this option if you want to have the mouse operate with the right mouse button as the primary button.
- Pointers Folders** This lets you change the shape of the cursor.
- Office Mode** Only supports Microsoft Office 97 along with some new applications. Features include zoom, scrolling and Auto-scrolling features. It’s similar to Microsoft’s IntelliMouse.
- Genius Mode** Supports all applications that use scrollbars, including Office97, with zoom, Auto-panning, and scrolling functions.
- About** Click here to open the Genius Homepage “www.geniusnet.com.tw”
- Orientation** This function lets you set the angle when you move the mouse upward.

It gives you a more comfortable angle when holding the mouse. This function works best with a portable trackball.

EasyJump for Windows

EasyJump lets you open eight special functions quickly.



Close AP Close the application you are using.

Horizontal Moves the cursor to the horizontal scroll bar.

Vertical Moves the cursor to the vertical scroll bar.

Start Activates the Windows Start menu.

Internet Access This function opens Browser to access the Internet.

Help This opens the Help menu.

Control Panel Opens the mouse control panel.

Auto-Panning Move the mouse, and the document will move in the direction you move the mouse.

Switch Applications When the right-button or Magic-Roller is set to "Switch AP", you can quickly switch from one open application to another without moving the mouse. To switch to a specific application, press the the right button or the Magic-Roller to select the application.

Zoom function for Office and IE Applications

Press the "Ctrl" key and move the "Magic-Roller" forward (or backward) to set the Zoom In/Out function. You can also use just one hand to Zoom In/Out: set the right button to be the "Ctrl" function, press the right button and move the "Magic-Roller" forward (or backward) to enlarge (or decrease) the document window.

Auto-Panning

You can set this function in the Button Assignment menu. Move the mouse, and the document moves in the direction you just moved.

Uninstall the software

Follow these instructions to remove the software from your hard disk. In Windows 95/98/NT, click on the Start button, select Programs and move to the mouse software. Then click on Uninstall software.

Customize the software

This section shows you how to customize the software. To open the software control panel, you can double-click on the icon in the task bar or select the "software" icon from the program group.

Close the Software

Click the right button on the taskbar, and select "Close the software" to close the software

This device complies with part 15 of the FCC rules. Operation is subject to the following two conditions.

- (1) This device may not cause harmful interference, and
- (2) This device must accept any interference received, including interference that may cause undesired operation.

Per FCC 15.21, you are cautioned that changes or modifications not expressly approved by the part responsible for compliance could void the user's authority to operate the equipment.

This equipment has been tested and found to comply with the limits for a Class B digital device, pursuant to part 15 of the FCC Rules. These limits are designed to provide reasonable protection against harmful interference in a residential installation. This equipment generates, uses and can radiate radio frequency energy and, if not installed and used in accordance with the instructions, may cause harmful interference to radio communications. However, there is no guarantee that interference will not occur in a particular installation. If this equipment does cause harmful interference to radio or television reception, which can be determined by turning the equipment off and on, the user is encouraged to try to correct the interference by one or more of the following measures:

- Reorient or relocate the receiving antenna.
- Increase the separation between the equipment and receiver.
- Connect the equipment into an outlet on a circuit different from that to which the receiver is connected.
- Consult the dealer or an experienced radio/TV technician for help.