



CONGRATULATIONS
ON YOUR NEW GENTEK
TRUE WIRELESS EARBUDS!



AIRBUDS TWS USER MANUAL

WE WANT YOU TO LOVE YOUR GENTEK TRUE WIRELESS, SO WE'RE PROUD TO OFFER YOU AN EXCEPTIONAL CUSTOMER SERVICE EXPERIENCE. IN ADDITION, WE'LL PROVIDE QUICK SOLUTIONS TO ANY ISSUES WITHIN 24 HOURS.

#ZTWS-BLK, ZTWS-WH



PACKAGING CONTENTS

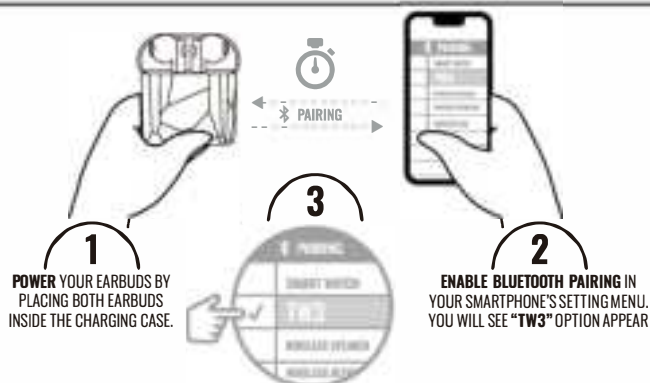
- 1x Pair-TWS Earbuds
- 1x Portable Charging Case
- 1x Micro-USB Charging Cable
- 1x User Manual
- 1x Quick Guide



Designed and Engineered in New York



QUICK START GUIDE: MEET YOUR TW3 WIRELESS EARBUDS.



SELECT "TW3" OPTION AND IT WILL TAKE A FEW SECONDS TO HEAR A PAIRING "PROMPT" TO SIGNAL THAT YOUR TW3 EARBUDS ARE PAIRED WITH YOUR SMARTPHONE.

- TO ONLY USE ONE EARBUD IN SINGLE MODE, ONLY TURN ON ONE OF THE EARBUDS AND COMPLETE PROCESS.
- THE LAST SUCCESSFULLY PAIRED DEVICE WILL CONNECT AUTOMATICALLY DURING THE NEXT PAIRING ATTEMPT.

STILL HAVE PAIRING QUESTIONS?

CHECK OUT OUR TW3 TUTORIAL VIDEO BY VISITING THE GENTEK CHANNEL ON YOUTUBE.

NEED HELP? CONTACT OUR SUPPORT TEAM AT: WWW.GENTEKACC.COM/SUPPORT | 1-646-351-1700 (MON-FRI, 9AM-6PM EST) SUPPORT@GENTEKACC.COM | REGISTER YOUR TURE WIRELESS EARPONES: WWW.GENTEKACC.COM

USING YOUR EARBUDS

	FUNCTION	ACTION
BLUETOOTH CALLING	CALLER ID	WHEN RECEIVING AN INCOMING CALL, THE NUMBER WILL BE READ ALOUD.
	ANSWER CALL	PRESS THE MULTIFUNCTION BUTTON ON EITHER SIDE WHILE RECEIVING A CALL.
	END A CALL	PRESS EITHER SIDE'S MULTIFUNCTION BUTTON ONCE DURING A CALL.
	REJECT/IGNORE A CALL	PRESS AND HOLD THE MULTIFUNCTION BUTTON ON EITHER SIDE FOR 1 SECOND.
	LAST NUMBER CALLBACK	TO REDIAL THE LAST NUMBER IN YOUR SMARTPHONE'S CALL HISTORY, TRIPLE-CLICK THE MULTIFUNCTION BUTTON ON THE RIGHT EARBUD, THE NUMBER WILL AUTOMATICALLY DIAL.
MUSIC & AUDIO	PLAY OR PAUSE	PRESS THE MULTIFUNCTION BUTTON ONCE EARBUDS ARE PAIRED TO A DEVICE.
	NEXT TRACK / PREVIOUS TRACK	DOUBLE-CLICK LEFT EARBUD / RIGHT EARBUD.
	VOLUME + / -	PRESS AND HOLD THE MULTIFUNCTION BUTTON 2 SECONDS ON LEFT EARBUD / RIGHT EARBUD.
	PLAYLIST CONTROLS	USE YOUR PAIRED DEVICE (SUCH AS A SMARTPHONE OR TABLET) TO CONTROL.
GENERAL	ACTIVATE SIRI / VOICE ASSISTANT	TRIPLE-CLICK THE LEFT EARBUD
	TURN ON / OFF	PRESS AND HOLD THE MULTIFUNCTION BUTTON ON EITHER SIDE FOR 5 SECONDS

CHARGING YOUR TW3 EARBUDS

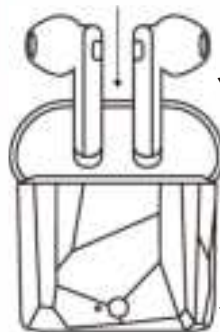
NOTE: THE EARBUDS WILL REQUIRE UP TO 1 HOUR DOCKED IN THEIR CHARGING CASE TO RECHARGE THEIR BATTERIES. WHEN FULLY POWERED, THE PORTABLE CASE WILL PROVIDE THE EARBUDS WITH UP TO 4 ADDITIONAL CHARGES.



FULL POWER = 4 EXTRA CHARGES

1. INSERT THE EARBUDS INTO THEIR CORRESPONDING CHARGING PORTS IN THE CASE, RESPECTIVELY MARKED L AND R [FIG1]. (EACH EARBUD WILL MAGNETICALLY DOCK INTO THE CHARGING CASE. CLOSE THE CASE.)
2. INSERT THE INCLUDED MICRO-USB CHARGING CABLE INTO THE BACK OF THE CHARGING CASE AND CONNECT TO A POWER SOURCE (SUCH AS A POWER BANK, AC WALL ADAPTER, ETC.) [FIG2].
3. YOU WILL SEE THE CASE FLASH RED TO INDICATE THAT AUTOMATIC CHARGING HAS BEGUN.
4. WHEN THEY HAVE FINISHED CHARGING, CHARGING CASE LED WILL GLOW A STEADY RED

FIG.1

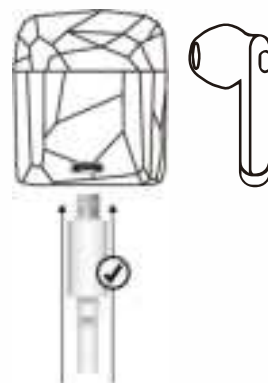


PLACE EARBUDS INSIDE THE CHARGING CHAMBERS OF THE DOCK CASE. EARBUDS WILL LIGHT UP RED TO ENSURE AN ACCURATE CHARGING CONNECTION

CHARGING INDICATOR

POWER BUTTON

FIG.2



USE MICRO-USB CABLE TO CHARGE YOUR DOC CASE

WHEN USING YOUR CASE TO CHARGE YOUR EARBUDS, THE CASE'S EXTERIOR LEDS WILL GLOW SOLID BLUE AND THE INTERIOR LED UNDER THE EARBUDS WILL GLOW SOLID RED. ALL LEDS WILL TURN OFF AFTER ARE BOTH FULLY CHARGED

WHEN USING YOUR CASE WITH THE INCLUDED MICRO-USB CABLE, THE CASE'S INTERIOR LEDS WILL FLASH RED UNTIL IT IS FULLY CHARGED. WHEN THE CASE IS FULLY CHARGED, IT WILL GLOW A SOLID RED.

NOTES FOR PAIRING:

- KEEP THE DISTANCE BETWEEN YOUR SMARTPHONE AND THE EARBUDS WITHIN 3 FEET (FOR PAIRING ONLY).
- THE EARBUDS MUST BE POWERED ON IN ORDER TO PAIR.
- BEFORE ATTEMPTING TO PAIR, MAKE SURE THAT YOUR SMARTPHONE OR TABLET'S BLUETOOTH FUNCTION IS ENABLED UNDER SETTINGS. SPECIFIC PAIRING PROCEDURES WILL BE DIFFERENT DEPENDING ON DIFFERENT BRANDS AND MODELS. FOR DETAILED INFORMATION ON BLUETOOTH PAIRING, PLEASE REFER TO YOUR DEVICE'S USER MANUAL.

STEP 1: PRESS AND HOLD THE MULTIFUNCTION BUTTONS ON EACH EARBUD FOR 3 SECONDS. YOU WILL SEE THE LED FLASH RED AND BLUE ON EACH SIDE, INDICATING THAT THE POWER IS ON. YOUR EARBUDS ARE NOW IN PAIRING MODE.
STEP 2: OPEN YOUR SMART DEVICE'S SETTINGS MENU AND ACTIVATE BLUETOOTH PAIRING. YOUR SMART DEVICE (TABLET, SMARTPHONE, ETC.) WILL PERFORM A SEARCH FOR LOCAL DEVICES: AFTER A FEW SECONDS YOU'LL SEE 'TW3' APPEAR ON THE LIST.
STEP 3: SELECT THIS OPTION. ONCE THIS HAPPENS, YOUR EARBUDS ARE READY TO USE.*

*YOU MAY WISH TO ONLY USE ONE EARBUD (SINGLE MODE) INSTEAD OF USING THE PAIR TOGETHER (DUAL MODE). WHEN THIS IS THE CASE, SIMPLY TURN ON THE EARBUD YOU WISH TO USE AND FOLLOW THE SAME STEPS WHILE KEEPING THE OTHER EARBUD TURNED OFF. YOU WILL HAVE THE SAME GENERAL FUNCTIONALITY.

TO TURN YOUR EARBUDS OFF, PRESS AND HOLD THE MULTIFUNCTION BUTTONS ON BOTH EARBUDS SIMULTANEOUSLY FOR 3 SECONDS. THE LED WILL FLASH RED ON BOTH EARBUDS, INDICATING THAT THEY ARE TURNING OFF.

AUTO-PAIRING

ONCE YOU HAVE SUCCESSFULLY PAIRED YOUR EARBUDS TO A BLUETOOTH-ENABLED DEVICE, THAT DEVICE WILL REMEMBER AND RECOGNIZE YOUR EARBUDS FOR AUTOMATIC RE-PAIRING. THIS MEANS THAT THE NEXT TIME YOU WISH TO USE YOUR EARBUDS WITH THAT SMART DEVICE, PAIRING WILL HAPPEN AUTOMATICALLY AND WITHOUT THE NEED FOR YOU TO REVISIT YOUR DEVICE'S BLUETOOTH DISPLAY SCREEN.

SAFETY PRECAUTIONS/WARNINGS

IF YOU HAVEN'T USED YOUR EARBUDS IN A WHILE OR PLAN TO GO LONG PERIODS OF TIME WITHOUT USING THEM, BE SURE TO CHARGE THE UNIT ONCE A MONTH TO PREVENT DAMAGE TO THE LITHIUM-ION BATTERIES OVER TIME.

DO NOT ATTEMPT TO PIERCE, STRIKE, OR APPLY STRONG PRESSURE WITH SHARP OR HEAVY OBJECTS. STRONG IMPACT OR SHOCKS

COULD CAUSE IRREVERSIBLE DAMAGE TO THE UNIT.

AVOID PROXIMITY TO HIGH FREQUENCIES AND STRONG MAGNETIC DEVICES WHEN POSSIBLE. DROPPING OR MISHANDLING THE EARBUDS MAY CAUSE IRREPARABLE DAMAGE TO THE UNIT AND ITS BATTERIES.

DO NOT EXPOSE TO OR SUBMERGE IN WATER.

KEEP EARBUDS AWAY FROM HEATING APPLIANCES AND SOURCES OF ELECTRICAL NOISE, SUCH AS FLUORESCENT LAMPS OR MOTORS.

KEEP HANDS DRY AND CLEAN WHEN TOUCHING THE EARBUDS AND BUTTONS.

KEEP THE EARBUDS AWAY FROM SMALL CHILDREN AT ALL TIMES OR ENSURE STRICT SUPERVISION BY AN ADULT AT ALL TIMES. THE UNIT CONTAINS SMALL PARTS AND MAY POSE A CHOKING HAZARD.

DO NOT EXPOSE THE EARBUDS OR ANY ELECTRICAL PARTS TO EXTREMELY HIGH OR EXTREMELY LOW TEMPERATURES OR HIGH PRESSURE. DO TO EXPOSE THE EARBUDS OR CASE TO FIRE, DIRECT SUNLIGHT, DUST, HIGH LEVELS OF HUMIDITY, OR OTHER HOT LOCATIONS. THIS MAY CAUSE THE BATTERY TO GENERATE HEAT, IGNITE, OR EXPLODE.

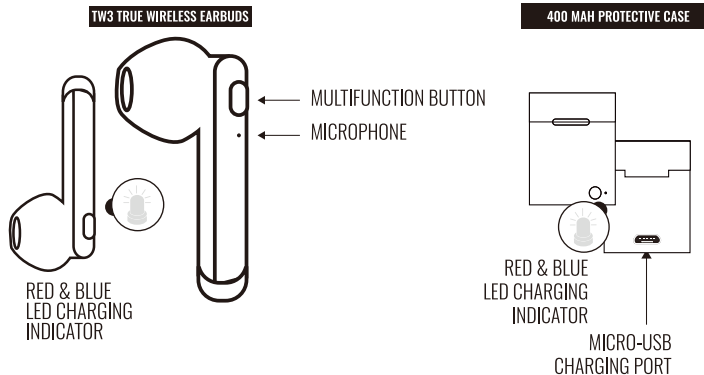
USING THE EARBUDS OR CHARGING CASE IN THIS MANNER MAY ALSO RESULT IN A LOSS OF PERFORMANCE IN A SHORTENED LIFE EXPECTANCY.

DO NOT ATTEMPT TO DISASSEMBLE OR MODIFY THE EARBUDS OR CASE IN ANY WAY.

IMMEDIATELY DISCONTINUE USE IF THE UNIT HAS ANY VISIBLY EXPOSED PARTS OR APPEARS MALFUNCTIONAL IN ANY WAY. IF THIS DOES OCCUR, ISOLATE THE EARBUDS IN A SAFE PLACE AND CONTACT THE GENTEK CUSTOMER SUPPORT TEAM AT SUPPORT@GENTEKACC.COM

PRODUCT DIAGRAM

ERGONOMIC IN-EAR DESIGN



Bluetooth

BLUETOOTH VERSION: 5	PLAYTIME: UP TO 10 HRS WITH CHARGING CASE	EARBUD BATTERY LIFE: 40MAH (EACH)	CHARGING CASE BATTERY: 400MAH
BATTERY TYPE: RECHARGEABLE LITHIUM-ION	EARBUDS CHARGE TIME (FROM CASE): UP TO 1 HOUR	CHARGES PROVIDED (CASE POWER): UP TO 4	STANDBY TIME: UP TO 100 HOURS
INPUT 5V/1A	OUTPUT: 5V/400MAH	FREQUENCY RESPONSE: 2.4GHz-2.485GHz	COMPOSITION MATERIAL: ABS
IMPEDANCE: 32	MICROPHONE SENSITIVITY: 38		

*NOTE: USING YOUR EARBUDS AT LOWER VOLUMES WILL HELP PROLONG THE BATTERY LIFE BETWEEN CHARGES.

READING THE LED INDICATOR

UNIT	LED INDICATION	MEANING
EARBUDS	LED FLASHES RED/BLUE AFTER HOLDING MF BUTTON FOR 3 SECONDS.	THE EARBUDS HAVE JUST POWERED ON AND ARE IN PAIRING MODE.
	LED FLASHES RED AFTER HOLDING MULTI-FN. BUTTON FOR 3 SECONDS.	THE EARBUDS ARE POWERING OFF.
	LED FLASHES RED ONCE EVERY 5 SECONDS.	THE UNIT HAS LOW POWER AND SHOULD BE RECHARGED.
CHARGING CASE	LED FLASHES RED	CASE IS CHARGING
	LED GLOWS SOLID RED	CASE IS FULLY CHARGED
	LED FLASHES BLUE	CASE BATTERY IS LOW
	LED GLOWS SOLID BLUE	CASE IS PROVIDING BATTERY TO EARBUDS

TIPS FOR USING THE MICROPHONE

- WHEN MAKING AN OUTGOING CALL OR RECEIVING AN INCOME CALL IN DUAL MODE (USING BOTH EARBUDS), BOTH EARBUD'S MICROPHONE WILL BE FUNCTIONAL.
- WHEN MAKING AN OUTGOING CALL OR RECEIVING AN INCOMING CALL IN SINGLE MODE (ONLY USING ONE EARBUD), YOU MAY USE EITHER THE LEFT OR RIGHT EARBUD.

FCC STATEMENT :

This device complies with Part 15 of the FCC Rules. Operation is subject to the following two conditions:

- (1) This device may not cause harmful interference.
 - (2) This device must accept any interference received, including interference that may cause undesired operation.
- Warning: Changes or modifications not expressly approved by the party responsible for compliance could void the user's authority to operate the equipment.

NOTE: This equipment has been tested and found to comply with the limits for a Class B digital device, pursuant to Part 15 of the FCC Rules. These limits are designed to provide reasonable protection against harmful interference in a residential installation. This equipment generates uses and can radiate radio frequency energy and, if not installed and used in accordance with the instructions, may cause harmful interference to radio communications. However, there is no guarantee that interference will not occur in a particular installation. If this equipment does cause harmful interference to radio or television reception, which can be determined by turning the equipment off and on, the user is encouraged to try to correct the interference by one or more of the following measures:

- Reorient or relocate the receiving antenna.
- Increase the separation between the equipment and receiver.
- Connect the equipment into an outlet on a circuit different from that to which the receiver is connected.
- Consult the dealer or an experienced radio/TV technician for help.

RF warning statement:
The device has been evaluated to meet general RF exposure requirement. The device can be used in portable exposure condition without restriction.



AFH Industries/Gentek declares that radio equipment TW3S-BLK, TW3S-WH is in compliance with Directive 2014/53/EU. The EU Declaration of Conformity is available at: afhind.com/eu https://europe.eu/european-union/documents-publications/official-documents_en

* All trademarks and copyrights are the property of the respective companies
MADE IN CHINA

GEN
TEK

CONFIDENTIAL ARTWORK

DESIGNER: JERRY
COMPANY: GENTEK | AFH INDUSTRIES
MODEL#: ZTWS-BK, ZTWS-WH

PRODUCT: TW3 MANUAL (CVS, STOCK)

SPEC INFORMATION



PACKAGED TYPEFACES | FONT

OSWALD DEMIBOLD
OSWALD MEDIUM
OSWALD EXTRA LIGHT
HELVETICA
HELVETICA DOLD

CROP SIZE OF DIELINE

W 221.484 MM X H 167.977MM

PAPER | SUBSTRAIT

SCALE: 100%
SIZE: W H
PAPER STOCK: 80g GlossPaper
INK: CMYK
W 221.484 MM X H 167.977MM

NOTES & REFERENCES

MOCK UP REFERENCE

